



# Lambeth go for housing, cut offices

The planning decisions are now rolling in for the South Bank Area,

- \*\* LAMBETH HAVE GONE FOR HOUSING
- \*\* GLC FOR A MIXTURE OF OFFICES AND HOUSING
- \*\* SOUTHWARK FOR MAINLY OFFICE DEVELOPMENT

After 3 years of fighting Waterloo people have almost won the battle to have the area developed as they want. Thanks to people organising and making themselves heard, Lambeth Council have, in a surprise decision, thrown out their officers' recommendations and decided to opt for housing.

On the foggiest night for 15 years Lambeth's Planning and Development Committee brought to a climax their participation exercise in Waterloo by choosing Option 1. This means:

- \*\* MORE HOUSING
- \*\* CUTS IN OFFICE DEVELOPMENT
- \*\* AN INDUSTRIAL AND ENVIRONMENTAL PROGRAMME
- \*\* SUPPORT FOR PENSIONERS, CHILDREN, HOMELESS ETC.

This is what most people in Waterloo want, and this is why they have been meeting for the last 3 years. The views of the people who came to six public meetings organised by the Waterloo Community Development Group (W.C.D.G.) were put together in a 'green letter' summarising the problems of the area. The green letter was heavily drawn upon in Lambeth's glossy 84 page brochure 'The Waterloo Draft Planning Strategy', which presented the three options in detail and was used, along with leaflets and questionnaires, as the basis for the summer participation exercise.

## Battle not over

The decision came after months of delays - delays that angered many people. Letters of complaint were sent to Lambeth, Asking why W.C.D.G. had been pressurised into hurriedly organising the last two public meetings in the summer, when discussion of the decision by Lambeth Council was then delayed for three months. Finally the right option was chosen, but the battle is not over yet: LAMBETH HAVE YET TO WORK OUT THE COST OF OPTION 1.

The last two meetings in summer '75 were attended by 340 people, and resulted in a second 'green letter' being sent to Lambeth Council. It urged that arguments based on cost should not be used against the preferred option. On the subject of new housing, the letter stressed that Lambeth should build family housing on sites owned by the GLC, since these can be bought at their 'historic value' - that is, the price paid for them originally.

Lambeth's decision is in sharp contrast to Southwark's decision (for mainly offices).

The GLC has at least opted for low-rise housing on its own freehold sites and others they may later acquire. If Lambeth can take note of what people say, and take action on it, many people are asking, why can't Southwark do the same? Let's hope that when the report is made on the finance side of Option 1, that Lambeth will stick to their promises. Meanwhile, congratulations to all those groups and individuals who made the effort, got together and made sure that the decisions were made not for them but by them.

Note: readers wanting to learn more about recent planning decisions, or concerned about any particular planning matter, should attend the meeting of the Waterloo Community Development Group on Tues. 27th January at the Waterloo Action Centre, 14 Baylis Road.



Party revellers at the 'Royal Vic' See Barfly- Page 7.

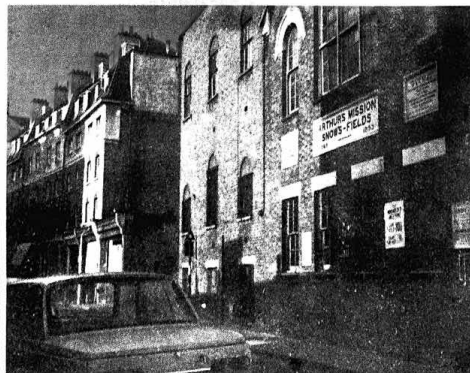
A PUBLIC CONSULTATION exercise which had been proposed for the development of the area bounded by Snowfields, St. Thomas' Street and Weston St. in Bermondsey may now have to be abandoned by the Council due to pressure from developers. After two years of negotiations between Tower Hill and Compass Property Companies and Southwark Council, four options were worked out and were to be presented to local people for their views. The developers have now told the Council that there is no point in such an exercise because they intend to submit a planning application within a few weeks. The four options would now seem to be one.

The four options were 'mixed development' schemes, each con-

taining 100,000 square feet of offices plus shops, housing and in some cases industrial units. Local residents were not involved in drawing up these options but were promised public consultation over the alternatives. Though such consultation is very limited, and even misleading because there is 100,000 sq.ft. of offices in every scheme, even this may now have been abandoned.

A spokesman for the North Southwark Community Development Group said that "the whole affair seems to have been handled in a completely incompetent manner. Councillor Potter has told us in a letter that before any decisions were made over Snowfields, consultation would be carried out. We shall be asking him to keep to his word."

## ...but more Offices in Southwark?



## Your Voice

### Full of Christmas Joy

Dear SE1,

I am writing on behalf of my wife and self to thank the organisers very much for the Christmas parcel they so kindly delivered to us. No present could have been more welcome, and we both most gladly accept it in token of good wishes from them all.

I need scarcely say how we enjoyed the contents, and we most fully appreciate their great kindness to us.

We would also like to show our appreciation to the ladies who work so hard to make us Senior Citizens a Happy Christmas.

Yours Faithfully,  
E. Thurgood  
18 Campbell Buildings SE1

### Washing Headache

58 Summer Buildings  
Summer Street,  
London SE1 JBX

Dear Sir,

The removal of two launderettes from the Borough area must cause the housewives plenty of trouble in finding one. The nearest one I can find is in The Cut or Lower Marsh. But look at the distance from the Borough area to either of these two places. And it puts a strain on any wife if she happens to have bags on the pram doing shopping and a child to care for. This is not the first place to close down. The butcher, the Co-op, the chemist (this includes the two along Blackfriars Road), and the little wool shop of Marshalsea Road have closed down, and the nearest chemist is now either in Lower Marsh or at London Bridge.

One does not say much, but it looks as if they intend to close the lot, no matter how much we try to protect our area from the land juppers.

Now for the second part of the letter: this is about the financial problems of the paper. I do not mind adverts in the paper, because it puts people in the limelight who would never be noticed in the big dailies. As for weddings I did have a sudden idea that it might be possible to run a side line department to cater for such things as weddings etc. and this might bring the finances up a bit.

I remain yours truly,  
T. Cressey

**SE1 Comment:** Yes, the launderettes are causing trouble - they are so overused now that the machines keep breaking down, especially the launderette in the Cut. The shortage of chemists is even worse than Mr. Cressey says - the chemist at London Bridge closed a year ago.

Dear SE1,

To all members and helpers etc. of the Waterloo Action Centre: My mother, Mrs E. Parker would like to express her sincere thanks for the food parcel she received at Christmas. She has never received a gift of any kind from the Borough before, and very thrilled by it.

Thanking you,  
Sheila Parker  
9 Aquinas Street.

## WRITE

to SE1. We want to hear your news and views. Send your letters to: SE1 Community Newspaper, 12 Meynott St, SE1.

### In the Dump

Dear SE1,

Once again, after high hope and many promises on the phone, and being passed from here to there, still nothing has been done about the dirty dump in Surrey Row. We at Pakeman House are pleased to report a nice Clean Up of our flats. Thankyou Corporation of London.

Now for Southwark Council: we Expect results soon! Our patience is getting exhausted.

On behalf of the tenants of Pakeman House,  
Alice R. Goodwin

## PROFOUND GRATITUDE

Dear Friends,

It seems some time ago since the pen of feeling and inward truth came out into the light for you to learn of my profound gratitude that illness that was mine

has eased by the gentle hands of the surgeon, Mr. O'Flynn, Guy's Hospital.

I am writing this a few days before Xmas; a time when millions of People in all Nations have one intent that dwells in their endangered hearts: to remember the family; to cherish friends near and far away, to empty the purse for the sole purpose of presenting a yuletide light to those whom are loved and admired.

My sincerest devotion of humane feelings go to the many people who visited me in Guy's, those many Tenants of Tooley St. Tenants' Association who sent me cards of "Get Well".

Yes, like the words of that lovely song - What is to be, will be; yet we can guide ourselves to sane living and to obey the Laws of human affection for each other.

May 1976 be the year of splendid aim for ALL SE1 readers.

So Faithfully Yours,  
Ron Hirstead.

## Golden Oldy



'That's all changed now, people moved out of the area, it altered Blackfriars altogether. Industry used to be flourishing, to-day there's hardly any. To-day you can walk down Blackfriars Road and not see a soul at night-time. The old friendly atmosphere has gone. Whilst they keep building these blocks of flats, there is no chance of the old atmosphere and community coming back. Originally I came from Bethnal Green, we used to have our back-gardens, we could lean over the wall and have a chat. That has all gone. There are quite a lot of people here I would like to be friendly with, but being in flats that is all cut out.'

'Around here I feel as if Blackfriars is being wiped of the map. One big bother we have in the lack of chemists. They tell us that if we want a chemist, we must travel for it. There are a lot of old people and often we must wait twenty minutes or half-an-hour, for a bus to the Elephant. The

transport say that 5 or 6 buses run from Blackfriars Rd, but they run from London Rd, old people must walk that distance.'

'It seems to me that the council don't seem to worry a lot about Blackfriars. I think there should be a little more interest in Blackfriars than there is to-day. Our group the Southwark Pensioners Club, is trying hard to get chemists down here. We need more members to give the group more support. The more people demanding a chemist, the more likely we are to get one.'

Everyone feels the lack of chemists in the area, especially the old. If you want to join Harry's group, get in touch with the Blackfriars Settlement (Nelson Sq) or write.

And if you have any happy memories or ideas you wish to express, the Golden Oldy is reserved for the older members of S.E.1, who want to talk about them. Get in touch with us at 12 Meynott St.

## Love's Labour Lost

Did you read in the South London Press on December 30th about the Public Inquiry into an office development on the Frank Love site on Westminster Bridge Road? The article read like a public relations hand-out from the property company who want to develop the site, and the views of the local people, including the Southwark Trades Council, against development were ignored.

St. Martin's Property Company the developers (owned by the Kuwait Govt.) argued that Frank Love Ltd. want to move because the building is unsuitable for them and that offices are the only "economic" use for the site. They want to build 20,000 square feet of offices and are prepared to offer as a "planning gain"

### COMMUNITY VIEWS

part of the site to the St. Mary's primary school on Lambeth Road.

But Southwark Council, the GLC and the local residents put opposing views. Southwark and the GLC said that the building should be kept in industrial use and that the land for the school was not a planning gain because the IEA could not afford to build a new school there for at least ten years. The case for the North Southwark Community Development Group was presented by John Hobson, a solicitor, who called three witnesses. Bob Colquhoun, Research Officer for the RSCG, gave statistics showing the decline in industrial and manufacturing jobs and the problems this

### SCHOOL LEAVERS

was causing for school-leavers. He said that more office jobs were not going to solve the problem of jobs for Southwark people.

Dave Phillips, from Peabody Stamford Street Estate, said that loss of industry and the invasion of North Southwark and Waterloo by offices was breaking up the community. Mr. Lee, from a furniture manufacturing firm next door to Frank Love's was worried that allowing offices next door might mean he would be forced to leave when his lease is renewed, he felt there was a need for small industrial premises in Inner London employing local people.

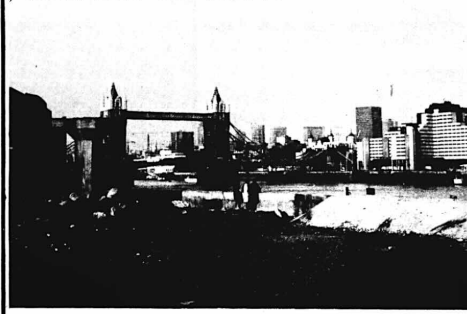
### SPECULATIVE

Mr. Graham Ayres, for St. Martin's Property, called local views about employment and community needs "totally irrelevant to the case" and argued that all of North Southwark and Thameside should be considered as suitable for offices.

John Hobson accused the developers of "blatant property speculation and showing a lack of concern for the community" and urged the Inspector from the Department of the Environment to turn down the office proposal.

St. Martin's Property Company have an option to develop part of the Hays Wharf. The decision for this then. Get in touch with us at 12 Meynott St.

## CONFLICT OF VIEWS



Tooley Street T.A., Dickens Estate T.A., Millpond Estate T.A., Arnold Estate T.A. and North Southwark Community Development Group were all represented at a Public Enquiry over the use of this site on the Bermondsey Riverside. The tenants argued that the site, which commands probably one of the best-known views in the world, should be laid out as an open space and not be allowed to be taken away by a developer proposing luxury flats that would block the view permanently from local people. The decision is expected in two months.

## Southwark Council challenged over use of £10,000

## Mis-spent youth

Anger erupted among Play Associations in Southwark at a suggestion by Council Officers that £10,000 which was to go to the Unicorn Children's Theatre on Bankside should go instead to the Henry Wood Concert Rehearsal Hall in Trinity Church Square. The Unicorn Children's Theatre cannot find enough money to build their new theatre, so that Southwark Council's contribution is free to be re-allocated. But instead of using it for other children's projects in Southwark, Officers suggested it go instead to the London Philharmonic Concert Hall.

Letters from Mint Street Adventure Playground, Blackfriars Settlement and Southwark Play Association were sent to the Libraries and Amenities Committee, objecting to the idea and saying that other projects in the Borough were of much greater importance. After a confused discussion on January 7th, the Committee dropped the proposal and found just £100 from another source.

It is easy to understand the concern of Play Associations. The Mint Street Adventure Playground, for example, heard recently that the Playground will

## Wellington victory at Waterloo

The battle to put those who really need housing into the new estate at Wellington Mills has been won.

Bowing to pressure from local Councillors, backed up with vociferous opposition from many groups and individuals, the GLC have informally told Lambeth that they can nominate people to their half of the flats as they see fit.

These people will be those in most need of housing. They must be prepared to take part in the co-operative, but it is a significant switch in emphasis to give them priority rather than look for specially suitable tenants regardless of whether they really need rehousing.

When the policy change is confirmed the next step will be to make sure the GLC doesn't use the co-op as a means of dodging their responsibilities.

not be moved to a new site in Southwark Bridge Road because the Council cannot find the money. Southwark Council originally wanted the move, in order to lay out the long-awaited 'Mint Street Local Park' on the present site of the Playground. This means that the new park has suffered another - and possibly permanent - delay. Just part of the £10,000 debated by the Libraries and Amenities Committee last week could have moved the Playground and given us some much needed open space. What are the Council priorities in SE1?

## Compensated

Residents of the Octavia Hill Trust Cottages in Ayres Street and Redcross Way in the Borough are to receive partial compensation for noise, disturbance, and damage to their homes caused by the demolition and construction of an office building which comes within a few feet of their front doors.

Work on the new building, which is ironically called Octavia House, began two years ago. First there was the demolition of the old warehouse by a firm called Valari, then followed by construction by Greenwoods. The Developer is Wigan, Richardson of Borough High Street. Initially all three parties refused to give compensation after letters of complaint with lists of damaged furnishings. After more pressure Greenwoods have finally offered one third of the costs. The demolition company and developers have not yet accepted their share of the responsibility. Local residents are getting little enough out of the redevelopment of the area, without suffering the nuisance and costs of demolition and construction as well.

## GLC Planners rapped by Policy Group Over hospital

The planning committee have been rapped by the GLC Labour Group for agreeing in principle to a 200 bed private hospital in Southwark Street, SE1.

The Labour Group who make the policy of the Labour Party in County Hall, have instructed the committee to reverse their decision when the issue comes up again. This will cause a confrontation with the officials in the planning department who say there are no "planning reasons" for turning down the hospital.

But the Community Health Council, the Southwark Trades Council and other local organisations believe there are very good reasons. They say the private hospital would take staff away from local hospitals already hit by staff shortages and would make it unlikely that industry would be allowed nearby.



## School Play A HIT! SAYS TED

St Saviours Primary held their annual Nativity Play in Southwark Cathedral on December 11th. Amongst a full audience of parents and friends were Ted Hines, aged 74, a former pupil of the school, and Mr Barker, former deputy Head. Ted thought the show was tremendous. SE1 hope the move to the new school site runs as smoothly later in the year.



## Conflict at last

OUR LEAD STORY HIGHLIGHTS A DECISION by Lambeth Council to go for housing in the Waterloo area which has important implications for the whole South Bank and Thames-side. With Southwark apparently seeking more office development and the GLC wanting a mixture of housing and offices, there is a conflict of policy between the three councils.

SE1 welcomes the conflict. We welcome it because it means that the question of what priorities should be established for our area must be brought out into the open. Already Southwark and the GLC are at loggerheads over how much office building should be allowed in North Southwark. Lambeth, with their new commitment to housing, will surely run head on into the GLC. And as for Lambeth and Southwark Councils, their policies are completely contrary.

But this must not be seen as just political wrangling or bureaucratic confusion. It is a question of fundamental priorities and of responsiveness to local needs. Lambeth are boldly taking a position which we hope will cause Southwark and the GLC to reconsider.

## Cut backs affects US

THERE ARE SEVERAL STORIES this month which raise the issue of cut-backs in local authority services and assistance to the community; for example, the hardship on Tyers Estate, the withdrawal of funds for the Mint St. local park, the continued saga of the unexplained site pointed out in Alice Goodwin's letter, and the Guy's Hospital nurses shortage.

We are constantly being told by the economists that we must accept cut-backs in public expenditure. But as the Snowfields issue shows, it is the economists who have got their priorities wrong, for the developers are having no trouble in finding money for more offices.

When we see what public cut-backs mean for us in SE1, we realise just how important it is to oppose them.

## 1-Parent Families

There are many hundreds (even thousands) of us living in Southwark trying to raise a family on our own. It is hard work, I know, I am in that position myself. I was lonely.

Although I had many single and married friends, they could not understand all of my problems. I was lonely and unhappy until my friend and I discovered Gingerbread. We went hesitantly along to one of their parties and met people who had or had had my problems and I could talk to them. I found myself involved with other people in the same situation as myself - so involved in fact that I am now secretary to that group, helping people the same as I found help.

We are not all do-gooders, far from it. We have outings for us and the children (eg visits to Chessington Zoo, fireworks

display on Nov 5th, parties for us and for children). Our membership is rising fast, with people joining each week - but we want to beat Southampton who have over 500 members.

We are a self-help group whose headquarters are at 9, Poland Street, London W4, Tel: 01-734 9014. Get in touch with them, they will give you your local secretary's address and phone number, or come along and meet us on a Wednesday night at the Salvation Army Citadel, Princess St, SE1. It's at the Elephant and Castle, between London Road and St Georges Road. Meetings start at 7.30pm and your children are welcome, tea and coffee available.

Remember we can help you and your children.

**Gingerbread**

## M.T. TIERNEY & SON

77 Union Street,  
Flat Iron Square.

Tel: 407-2652

Local newsagent, tobacconist  
& confectioner

Newspapers delivered daily

**OPEN**

7 days a week

## Evelina Christmas Presents

A number of local people in the Parish of the Hospital decided to form a committee in the Gladstone Arms, Lant St. in order to provide toys and other items of importance to the children who were unfortunately in hospital at Christmas. It was decided that a levy of 5p should be paid by the members using the Gladstone Arms on Sunday dinner time and by Christmas 1975 the sum of £100 was collected with which a portable television and toys were purchased.

Organisers Dave Moseley, John Holsgrove and Dave Moore intend to increase the figure in 1976 by holding raffles, competitions etc. The committee feel that this is one way that local people can express their thanks to the hospital and its staff.

The only sad reflection is the closing down of the old Evelina and the transfer to the Massive new tower in Guy's, but the committee still intend to carry on and support the Evelina in the new wing.

## ... meanwhile back in the new wing

Few institutions in SE1 have aroused so many feelings as the Evelina Hospital. It was a haven for local families, but also much liked by users from further afield. The special features of the old Evelina would not be easy to reproduce anywhere let alone 9 storeys up in a tower block in a huge hospital complex. So what is the new Evelina like? Dr. Stimla, head of the Childrens Hospital gave SE1 a guided tour.

Back in the days when the new tower was being planned it was not thought that a separate childrens' casualty would be necessary. The reputation of the Evelina and some re-thinking by the authorities however led them to make room for a separate childrens' casualty just inside



Sister Spurgeon with a Christmas patient in the new Dickens Ward, with presents bought with money raised in the Gladstone Pub.

the gate on Snowfields.

Entrance to the tower block is different again, rather like a hotel foyer, and spacious lifts take us to the 9th floor. The 110 beds/cots in the tower are arranged in cubicles on four floors, with isolation booths, and 15 parent and child cubicles. Also on each floor are dayrooms, classrooms and nurseries. Most of the children in the hospital are under 3 years old. One of only 2 burn units in London is located here although, as Dr. Stimla pointed out, "I'd rather it remained empty". All the other functions of a childrens hospital from general pediatrics, surgery, infections to intensive care are located here all with modern equipment. One thing marring the new wing is that there is

insufficient money to pay for adequate nursing staff, due to shortage of money from the Govt. Dozens of paintings and imaginative wall coverings and ceiling designs have been used to make the place as friendly as possible and as a final reminder of the hospital's roots a ward has been named "The Borough" ward. Local residents may see the irony in this it is the intensive care ward.

Whilst it is early days in the life of the new hospital, the old building in Southwark Bridge Road awaits a decision as to its future. It was originally planned to become part of a Mint St. local park, but these plans have now been shelved, because of the recent cut-backs in Government expenditure.

## Tenant sues

You live on the fourth floor of a block of flats. The stairlights don't work, all the doorways are bricked up, building debris covers the stairs, water drips everywhere, rubbish litters the ground outside. For Mrs. Coral Haswell and her seven children this is real because they are one of the few families who seem to be left behind by Lambeth Council in Edward Henry House off Cornwall Road.

But Mrs. Haswell isn't going to accept this any more. She is taking the Council to court. Under Section 99 of the 1936 Public Health Act any one can summons the Council to make them stop nuisances like Mrs. Haswell is suffering.

## no water for 2 days

"I had an accident on the stairs because there weren't any lights, that's what made me start this summons. We were without water for two days and I had to go downstairs to fetch some and I slipped and pulled a ligament in my ankle. We had to fix the light ourselves.

There's water running down the wall in the kitchen and the larder. After I served the summons the housing manager came round, he said that it was condensation. The health inspec-

tor said it was the roof leaking but he didn't know where."

Coral Haswell has been living in Edward Henry for eight years and before that she was in Barnaby Buildings (at the Bricklayers Arms, but pulled down about 18 months ago). Edward Henry was used by Lambeth Council to house homeless families temporarily (6 months) but

## 6 families left

for most families including the Haswells it seemed to have become permanent. The buildings were never made for so many families with so many children and the overcrowding soon made living conditions unbearable.

The Edward Henry Tenants Ass. eventually forced Lambeth to agree to rehouse all the tenants and this has slowly happened.

At the end of 1975 Lambeth Council gave the flats back to the GLC from whom they were leased. But there are still at least 6 families living there; they seem to have been forgotten. The GLC are thinking about rehabilitating the flats because they are still structurally sound but it could be years before anything is done. Meanwhile all the empty doorways and windows are being bricked up



## Where have all the buses gone, long time passing ...

WHERE DO LONDON Transport hide their buses at the week-end or on public holidays?

One Saturday afternoon I was trying to get from Stamford Street to the Tower Bridge Road. I could see the bus stops, but where were the buses?

During the week there are four bus routes in operation, no. 70, 76, 149 and 168A. But as soon as Friday night arrives, they all just disappear.

Where do they go to?

It is probably easy to hide

the 70 because it's a single decker, but how can you make the large double-deckers vanish?

Before me I had three choices. Either walking all the way, or going across Blackfriars Bridge to the Underground and so to Tower Hill station then back across the river via Tower Bridge, which is rather a long way round.

Or I could walk to Waterloo Road and get the 188, which goes via the Elephant & Castle.

So I decided to walk.

At the first bus stop I got to I saw a couple waiting for a 76. Enquiring where they wanted to get to, they said Stoke Newington.

I told them they were wasting their time, and that they would have to walk to the Mansion House, for this is where the 76 terminates at week-ends.

The Lord Mayor of London must get a lot of visitors. The 76 serves Liverpool St. station and I am sure another three or four minutes added to

this service at week-ends could serve Waterloo Station as well, which it does during the week.

At Waterloo there's also a bus garage and canteen for the crew, which the Mansion House hasn't got - unless they are invited in. As the couple left on their two mile hike they were really Lord Mayoring.

On reaching Southwark Street I was surprised to smell the frying of bacon, until I saw two kids with their camping equipment having a real fry-up on their primus stove.

I asked why they were doing it there, and the elder one said that they had planned a day's camping at Greenwich Park but on discovering there were no 70 buses to get them there they had decided to cook their meal by the bus stop.

Wishing them bon appetit, I moved on.

Soon I met an elderly couple

intending to visit their grandchildren. On hearing that the bus didn't run at weekends, only week-days for the commuters, the old man said:

"I wish I could get hold of the person who made these decisions, I'd give them a right One Four Niner. We had a better bus service before the war."

Finally reaching London Bridge I happened to see a bus inspector. So I asked him about the 70, 76, 149 and 168A.

He must have been hard of hearing, for his reaction was to say, Hey?

So I shouted A, but it was no use. Unless we all shout together we will never be heard.

P.S. After listening to a deputation, the GLC are now to look into the possibility of changing these bus routes time-tables.

**Footslogger**

## THE PROPERTY MACHINE



"The Property Machine" is a new book about property development and about how the developers, finance companies, and local councils have carved up North Southwark. It shows how the community has suffered from speculation and what we can do about it. Bob Colenutt, one of the authors, is Research Officer for the North Southwark Community Development Group. The book is a Penguin paperback and costs 60p.

## Pensioner's hols.

Lambeth are providing one weeks holiday in May to Cliftonville, Margate or Bognor for £1.50, cuts or no cuts.

Application forms are now available from the Waterloo Action Centre, 14 Baylis Road.

## Campbell Bldgs. T.A. forges ahead

It's always good to get things going with a success and the Campbell Buildings Tenants Assoc. couldn't have started off on a better note than the victory of getting Lambeth Council to agree to immediate improvements to the flats (see SE1 No.4) last November.

The Tenants Assoc. was formally set up at a meeting of about 25 tenants last November and several people volunteered to be on a temporary committee to get the Association moving. Hilma Pettley, Secretary, said "Lambeth Council have been going round the flats to see what kind of heating and hot water we want and how much it will cost. They've also been looking to see if they could put showers in the flats."

The Tenants Assoc. will be meeting Lambeth Council officials soon to see the results of the survey.

The fight may not be over yet. Lambeth Council might decide that they just can't afford to do any improvements yet because of the cuts in council spending. Many of the older residents of Campbell Buildings have been given broken promises before, so they are not raising their hopes too much yet. But with the residents united in their Tenants Assoc. they should be able to put the pressure on if the Council start trying to back down.

## Support Your Local Shop

- \* fresh milk daily
- \* newspapers
- \* frozen foods
- \* confectioners & tobacconists
- \* all groceries & provisions
- \* hot snacks, rolls and sandwiches to take away

Green Shield Stamps on all items. Double Stamps Saturdays.

**THOS. E. DAVIES & CO (TOMS) 137 Southwark Bridge Road, SE1**

OPEN UNTIL 8pm MONDAY-FRIDAY,  
7pm SATURDAY,  
1pm SUNDAY.

## What Where When?

### Entertainment

#### SOUTHWARK ENTERTAINMENTS

North Peckham Civic Centre Library Hall

**Films**

Jan 27 Wuthering Heights

Feb 10 The Hiredling

**LIVSEY MUSEUM** Exhibitions: Southwark Worthies till April 3rd

**MORLEY COLLEGE** Family Concerts 10.30-12.30am

Feb 7 Elmwood Steel Band - Recorders and Historical Dancers.

#### LAMBETH TOWN HALL

Jan 19 Music Hall with John Boulter of the Black & White Minstrels

Jan 26 Balalika Ensemble

Feb 2 Club Night - Licensed Bar - Cabaret - Dancing

Feb 9 Joan Reagan Music Hall

Feb 16 Music Hall with Tony Melody of TV's 'Rule Britannia'

(All the above cost 50p, 25p for OAPs and children)

Feb 14 St. Valentine's Day Dance 7.30-11.30 Old Time and Modern Dancing

Feb 15 1.45-3.45 p.m. Old Time Dancing 30p, OAPs 20p, 5p to watch

### Community Health Councils

ST. THOMAS' DISTRICT COMMUNITY HEALTH COUNCIL MEETING at 7.00pm

Feb. 3rd at Lady Margaret Settlement, 131, Kennington Road.

**GUY'S COMMUNITY HEALTH COUNCIL MEETING** 6.30pm 22 January

at the Court Room, Guy's Hospital.

### Libraries Closing

Most of Southwark's small

libraries are to be closed three

days a week from March in order

to save money.

Through the Council claim that

this is just part of their normal

review of services, it seems

odd that it comes at a time when

they are cutting spending every-

where.

The libraries affected include

Southwark Bridge Road, Borough Road and Harper Road. One of the days when Southwark Bridge Road branch will close is Saturday (the other is Thursday). Harper Road will close Tues. and Weds. and Borough Road on Mon. and Wed. To add insult to injury, there will be evening opening till 8pm on only two days a week.

## SE1: Where does your money go?

Have you ever wondered what happens to the 5p that you pay for a copy of SE1? It doesn't go into anyone's pocket anyway: SE1 is a non-profit making paper and every penny from sales and advertising is needed just to stop it making a loss.

Everyone who helps with the paper (writing stories, taking photos, typing, laying out the paper, selling it and many other jobs) does it for nothing - not even free coffee! The newsgatherers who sell it don't get any commission either.

We get 1500 papers printed of each issue, this costs £98 for 8 pages and £145 for 12 pages. On top of this other costs such as photographs, heating and materials add about £8. The last two issues nearly sold out - roughly 1400 copies - and at 5p a copy this brings in £70. So far we have been able to cover the balance (just!) with advertising.

SE1 was lucky in getting many donations of money and equipment especially at the beginning. All the office furniture was given, as well as the paint to decorate

the inside and out. Most of the equipment like paper, pens, rulers, glue, Letraset and type-writer was given by local firms. About £200 was donated from various sources including a raffle last summer.

We aim to make the paper pay for itself without subsidies or extra fundraising but we don't aim to make profits either so the price we charge will always be the lowest we can make it without going bankrupt.

### S.E.1 Meetings

We meet most Thursdays to discuss ideas for the next issue and articles that have been written. EVERYONE IS WELCOME AT THESE MEETINGS. They take place at 12 Maynard Street - just off Blackfriars Road.

#### SE1 MEETINGS this month:

Thurs January 22

Thurs January 29 (Annual General Meeting)

Thurs February 5

Thurs February 12

All meetings start at 7.15pm.

## Council Meetings

### Southwark

All meetings are at 7.00pm at

Town Hall, Peckham Road

Jan 28 FULL COUNCIL

#### Committee Meetings.

Jan 19 Policy & Resources

Jan 27 Joint Housing and Planning & Development Cttee.

Feb 2 Establishment

Feb 3 Social Services

Planning (applications) sub-committee

Community Development Project

Feb 9 Housing

Feb 11 Highways & Works

Feb 17 Planning & Development

Feb 18 Libraries & Amenities

### Lambeth

All meetings at Town Hall, Brixton

Jan 28 FULL COUNCIL 7.00pm

Committee Meetings, 7.15pm

Feb. 4 Construction Services

Feb 9 Planning & Development

Feb 11 Amenities Services

Feb 12 Health & Consumer Servs.

Feb 16 Housing

Feb 17 Public Services

Feb 19 Management Services

Agendas for these meetings are available a week in advance from the Town Hall.

### G.L.C.

All meetings at County Hall

Jan 27 FULL COUNCIL

Committee Meetings

Jan 20 Planning 10.30am

Historic Buildings 10.30am

Docklands Joint Cttee 4.00pm

Jan 22 Arts & Recreation 11.30am

Thames & Other Waterways Board 11.30am

Housing Development 2.30pm

Transport South Area 11.00am

General Purposes 2.30pm

Arts & Recreation 3.30pm

Jan 28 Policy & Resources

Strategic Policy Board 2.30pm

Jan 29 Housing Management 2.30pm

PUBLIC INQUIRY

January 20th, Peckham Town Hall.

Public Inquiry into 309-317

Borough High Street.

## Don't Miss

LOSS OF LOCAL COUNCILLORS

PUBLIC MEETING to protest

against the reduction in coun-

cillors in Southwark. Called by

Bermondsey Trades Council,

Cathedral Ward Labour Party, &

North Southwark Community De-

velopment Group. It will be held

at Duthy Hall, Great Guildford

Street on Wednesday January 21

at 7.30pm.

PUBLIC MEETING to talk about

the recent Lambeth Planning

decision for Waterloo and related

planning matters. Organised

by Waterloo Community Develop-

ment Group.

Tuesday January 27th at the

Waterloo Action Centre,

14 Baylis Road.

## LAMBETH DEVELOPMENT PLAN

THIS PLAN IS TO DECIDE THE FUTURE OF THE WHOLE OF LAMBETH. DECISIONS HAVE TO BE MADE ABOUT POLICIES ON HOUSING, SHOPPING, EMPLOYMENT, RECREATION AND TRANSPORT. THE FULL DETAILS CAN BE SEEN AT YOUR LOCAL PUBLIC LIBRARY OR THE WATERLOO ACTION CENTRE

YOU CAN SEND YOUR COMMENTS ON PRE-PAID REPLY FORMS AVAILABLE AT THE WATERLOO ACTION CENTRE.

## A Public meeting will be held for North Lambeth at the Waterloo Action Centre on Tues January 20th 7.30 pm

14 Baylis Road SE1. Tel: 261 1404

## barfly

## Royal Victoria

IN THE Royal Victoria, next to the Old Vic in Waterloo Road, you never know who you'll bump into. You could be drinking beside James Mason, local residents or the stage hands from the Old Vic who have their women and their drinks lined up for them during their breaks. And by the strength and size of the tug-of-war team this pub entered for the Waterloo Festival, I wouldn't like to bump into them too often. It's not just a place to quench your thirst, either, for there is a first class buffet at reasonable prices.

Last Christmas they put on a party for Senior Citizens, and this year they went one better and put on two parties on the same day (see photo Page One) One was for local children in the afternoon, followed by a Senior Citizens' party in the evening. These were made possible by the great effort they put into fund-raising. The 59 kids alone had £270 of presents between them. The total of £800 was raised from various companies and pubs in the City. We hope the pub goes on being supported when the National Theatre moves to the new premises on the South Bank.



SOUTHWARK STREET PEABODY (above), and DOUGLAS-ILFRACOMBE-MONARCH T.A.'S (below) dance the night away in 'The Ark', Crosby Row where both associations held their Christmas socials.



## Trouble at t' Windmill

Cleaning windows may be just another household chore to you. To the occupants of Windmill House it is a hazardous operation with danger of serious injury. Why? Firstly, the windows are poorly designed: only two small hinges hold them in position. Secondly, very little maintenance has been done since the flats were built 16 years ago, and

screws holding the windows in place have become rusty and loose, allowing the hinges to come right away from the frame. Several people have almost fallen out whilst cleaning the outside of the windows. One of them, Mrs. Murray, decided to take action. She raised a petition amongst the tenants, and delivered it to County Hall. The

result was that a surveyor came to look the windows over, who agreed with Mrs. Murray that they were indeed faulty. A week later, scaffolding costing £250 was erected, and workmen replaced three screws in the Murrays' window - one of which has already come out. Only one other flat received attention.

The GLC's Housing Dept. says the claims of danger were 'exaggerated' - the two worst windows had been seen to, and they are perfectly satisfied that the rest of the windows are quite safe.

Meanwhile, the rain and gales of this winter are taking their toll of the faulty windows. As Mrs. Murray says, "someone is going to be killed one of these days. With all that scaffolding, why don't they do the job properly?"



SNOW WHITE's dwarfes reveal all in their Christmas pantomime at St. Joseph's primary, Red Cross Way. The dwarfes were of course played by children from the school.

## Rubbish Skips-



IN PEARMAN STREET AND GREET STREET IN JAN.

## YOUR RIGHTS

## Check your Money

Supplementary Benefit rates went up in November - so you should check you had an increase. Normally, Supplementary Benefit will pay the cost of your rent, plus a living allowance for you and your family. The standard living allowances are:

Couple	£17.75	weekly
Single householder	£10.90	"
For each dependant		
aged 18 or over	£ 8.70	"
16 to 17	£ 6.70	"
13 to 15	£ 5.60	"
11 to 12	£ 4.60	"
5 to 10	£ 3.75	"
under 5	£ 3.10	"

Remember that when your child has a birthday, it may lead to more Supplementary Benefit.

Only the main rates have been set out here. There are higher rates for blind people, and those who have had Supplementary Benefit for two years without having to register for work.

Pensioners get different rates.

Couple	£21.55	weekly
Single householder	£13.70	"

Pensioners over 80 years get an additional 25p weekly.

The amount of savings you are allowed to have before they begin deducting from your Supplementary Benefit has now gone up to £1,200. For every complete £50 over this amount, 25p per week is deducted from your benefit.

### Unemployment/Sickness

Unemployment and Sickness

Benefit Rates have also gone up:

Single Claimant	£11.10	weekly
Couple	£18.00	"
Insured Married		
Woman	£ 7.80	"
First Child	£ 3.50	"
Each subsequent child	£ 2.00	"

### Ordinary Retirement Pensions

are now as follows:

Each Insured Person	£13.30	weekly
Uninsured wife	£ 7.90	"
First child	£ 6.50	"
Each subsequent child	£ 5.00	"

If you think you are not getting all the money you should then ask your local Social Security Office to send you a Notice of Assessment (form A 124): this should help to check whether you are getting the right money.

If you want any more help about Supplementary Benefit then contact BIAS at Blackfriars Settlement, 44 Nelson Square, SE1 Tel: 928 9521. BIAS is open Mondays to Fridays 10.00am to 5.00pm (Wednesdays 2.00pm to 5.00pm)



# Council to buy parades

## Change of policy on local shops

Southwark Council are considering the acquisition of shopping parades that are threatened by redevelopment. At a meeting of the shopping Policy Group, members of the North Southwark Community Development Group were told that the Council now realises the importance of protecting all local shops and that the purchase of Flat Iron Square, Borough High Street and Great Dover Street shops was under consideration.

The results of a survey of the use of Flat Iron Square, Borough High Street and Great Dover Street shops, which was undertaken last year by the Council, were presented. These confirmed local views about the importance of trade from the local residents.

Lil Patrick of Tooley Street Tenants Association told Council members and Officers that there was only one food shop left on the whole of Tooley Street and that now even that was to close. She pleaded with members to go out and look at the areas that were suffering.

The Shopping Policy Group seem to recognise at last that new shops provided under redevelopment schemes are unlikely to contain the same uses as the shops they replace, and that acquisition is the only answer.

## Lancaster TA lives!

GLC tenants living in the Lancaster Estate off Blackfriars Road may at last begin to see some improvements in the quality of service they get from their landlord. Wednesday January 14 is the date set for the first meeting between the newly formed Tenants' Association and the GLC Walworth Area Housing Manager, Mr. Becque.

The new T.A. began back in October, when Christine Claydon invited tenants of two blocks to a meeting in her flat. Within a few weeks, a general meeting was called, and an Association agreed on. Chris, now Secretary of the T.A., told SE1: "From those first half-dozen, we now have over a hundred members. All the hard work of door-knocking, stair-climbing, getting blank looks and even verbal abuse was not in vain - Lancaster Estate T.A. lives!"

Progress is slow but sure, and practically everywhere there is encouragement, especially from the senior citizens, for what they are trying to do. Chris described the aim as:

"To help everyone be more neighbourly towards each other, to make the GLC take notice of the way our estate is becoming an eyesore, and to get something done about long-standing repairs"

They also hope to get a regular meeting place, and social



Shops in Flat Iron Square in Union Street which could be saved if the Council goes ahead with its plans to buy the parade.

## 175 Xmas parcels

ONE HUNDRED and seventy-five disabled and elderly people living in our area were given a little joy at Christmas. This was made possible by contributions of food and donations of cash by local groups. It was organised by the Waterloo Action Centre.

The Mayor of Lambeth donates 700 parcels every Christmas but this doesn't go very far when there are 70,000 senior citizens living in Lambeth. Even so it's 700 more than some local authorities give.

This was the first year the Waterloo Action Centre tried to organise such an operation. Names and addresses were suggested by local Social Services and groups. John Hearn, one of the organisers, said "If we missed any person out we are very sorry,

we stretched the parcels out as far as possible. We tried to reach the people who were really in need."

Thanks go to the pupils of the London Nautical School, Campbell Buildings tenants association, Peabody Duchy St tenants association, the GLC Planning Department, the customers of the Rose and Crown, Colombo Street who made a huge donation from their swear box, the telephonists at the North Lambeth Telephone Exchange and members of the public who brought in food and donations to the Action Centre.

One of the organisers said that fund-raising could start earlier and that way more of our elderly could be reached, and if possible get more local groups to do their own thing in providing for their own people.

activities for the children and Senior Citizens, as well as for those in between. And there was this message for fellow-tenants: "Please, if you want the benefit lend a hand. The more people help, the more we can do".

## Trail of destruction

As if in answer to October's article in SE1 on the destruction of Borough High Street, Southwark Council is to produce a leaflet for a "Town Trail" up the street entitled "Walk about one of the oldest parts of London".

But how much of the old street still exists? The council have been encouraging the conservation of buildings by turning them into office blocks. Visitors to the area will be able to marvel at its history as they read the special brochure but they aren't likely to see much of it in the buildings any more.

## Cutbacks hit plans for Tyers

Government cutbacks on spending have led Southwark Council to shelve plans to fully modernise Tyers Estate, Tanners Estate and other estates in Bermondsey and Southwark.

The original plan was to begin work when the estate was empty, but although the process of moving people out was begun, the plan is now to carry out a smaller scale modernisation "package" while tenants remain there.

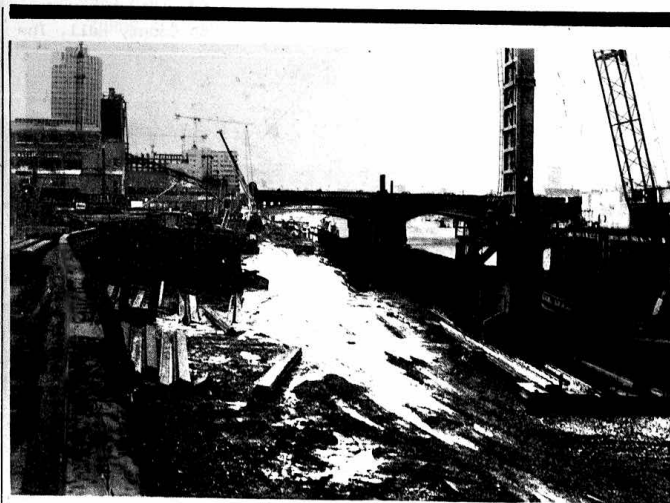
Many of the people on the estate still wish to move away and are bitter that people who moved before the cut-backs not only moved into new flats but received a lot of money in home loss payments. One old-age pensioner who has lived in the area all his life told SE1, "We've put up with all the nuisance, our flats are upside down, the banging and noise is affecting our nerves and we would like compensation".

Another tenant feels the council are "going the wrong way about it". Often it takes up to six weeks to complete the works. On a GLC estate in Lambeth where similar work is being carried out, it takes from 3 to 5 days and £10 compensation is given to each tenant for the disturbance.

## £25 compensation

The Association of London Housing Estates is campaigning for a minimum of £25 and are putting pressure on Southwark Council to pay. Southwark's reaction is that with 5,000 flats to modernise this would cost too much.

The residents of Tyer's Estate however have had a very rough deal and deserve compensation even if they are treated as a special case.



THIS FORESHORE on Bankside is being reclaimed to make space for a park. Residents have been told by the Council that the developers were giving land worth several million pounds for the park. This foreshore is common land and doesn't belong to them to give. Whilst we have gained a park, we have lost a "gain"