



Pensioners help us across Waterloo Road



AT LAST IT HAS HAPPENED, not without 2½ years of hustle and bustle and many delays. It just did not happen because it is the Queen's Silver Jubilee, nor did the authorities just come along and say "ah, that needs doing". No, it took local people's action to get it.

Yes, it's the new pelican crossing at the junction of the Cut, Waterloo Road and Lower Marsh. It was way back in 1974 when two people lost their lives on the crossing, one a local pensioner. This inspired a group of Senior Citizens of the Helen Barlow Club who met once a week at the Waterloo Action Centre near the crossing, and they decided to do something about it.

Black ● spot

Mrs Winnie Clegg, who helps out at the Club, said, "Many of the elderly members of our Club live in the direction of Blackfriars Road and so have to cross Waterloo Road. When we heard of the fatal accident to Mrs Copley we decided to start a petition, hoping to get something done about this dangerous spot. I have seen younger and more able people having trouble trying to cross the road, with buses turning out of the Cut from the bus garage and traffic turning from Baylis Road into Waterloo Road. There seemed to be no pause in the traffic lights for pedestrians to cross in safety."

T.A.s ● help

With assistance from the workers at the Waterloo Action Centre, a petition was raised, with local groups, tenants associations and local firms taking it around. While the petition was going around there was another incident at the crossing. This was not fatal but it made John Hearn, the secretary of the Peabody Duchy Street T.A. organise a group of volunteers from the Community Action Team at Blackfriars Settlement to collect signatures on the spot.

Using a loud hailer the danger was pointed out to the people crossing Waterloo Road. There must be at least 50,000 people crossing this junction every week.

They did not need much telling and hardly anyone refused to sign the petition, even workers from County Hall, where the petition would finally go.

4,333 ● sign

A final total of 4,333 signatures was collected and handed over to Lambeth Council with the assistance of the local ward councillor Mrs Pam Verden. Then in turn it was brought to the attention of the Transport Division at County Hall.

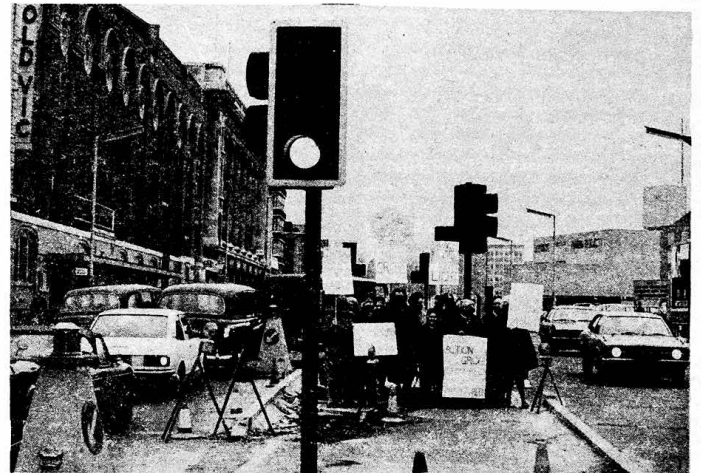
Although this was passed by the Transport Committee it still took two years of delays caused by missing parts, no pelicans available, non-ordering of the lighting systems. It seemed that the GLC didn't want to stop the traffic.

Other ● crossing

At least it's getting better, the pelican crossing at the Westminster Bridge Road end of Lower Marsh took three years. With all the delays it was surprising that no other fatal accidents occurred, although there were minor accidents.

Now there are two large islands in the middle of Waterloo Road where now you can take refuge from the traffic. So when you cross, please have a pause of thought for the Senior Citizens who started it and brought it to the attention of the authorities.

THANKS TO THE PENSIONERS GROUP AND THE 4,333 PEOPLE WHO SIGNED THE PETITION, THE BLACK SPOT HAS NOW DISAPPEARED.



The pensioners group demonstrating that they weren't chicken when it came to getting the Pelican to cross the Rhode.

Laundry for GLC estates

The longest running soap opera in London has taken another turn. At a meeting of the GLC Housing Management Committee on February 17th, the question of the closed Laundries on GLC estates was discussed. The Laundries were shut following an accident in Tower Hamlets where a child had her arm ripped off in a faulty spin dryer.

Following that accident the factory inspectorate laid down very strict conditions for any future operation of council laundries. These conditions however would mean the GLC employing some 50 or more new staff to control and supervise the laundries. This is not possible due to the cut-backs in expenditure, and so the GLC are looking at other ways of meeting demand for laundry facilities from tenants.

Typical estate

One possibility being looked into is the GLC selling tenants washing machines and tumble driers in an HP arrangement. This would operate in a similar way to the present deductions now made with council rents for laundry facilities. To test this idea out a pilot survey is to be carried out on a "typical" estate to see what demand there is for such an arrangement. If the scheme goes ahead it is seen as a replacement for the laundry service, but a decision will not be made until the result of the survey is known in about 2 months.

In the meantime, all tenants can look forward to is a rebate of the money paid out for the laundry service since it has closed down. Whether the laundries will open again will have to wait for the results of the survey. Presumably if there is no demand for the HP arrangement more thought will have to be given to taking on adequate staff to run efficient safe laundries.

GEE ELSIE !

TWO GREATER LONDON COUNCIL OFFICERS flew to the US last month to tell the Americans about the wonderful maintenance and repair work on GLC housing estates.

According to a press release the officers will be telling housing experts "how the GLC tackles maintenance work on its estates and how it has achieved consistently high standards while keeping down costs". GLC tenants may well be wondering where these estates are that have such high maintenance standards - maybe the GLC thinks it doesn't own Tabard or Rockingham estates anymore.

Tony Judge, chairman of GLC housing committee, commented "it is interesting that the Americans think sufficiently highly of our techniques to find out themselves how we do it... I hope America finds it worthwhile to use similar modern methods."

The Americans should come over here and see for themselves how the "modern methods" work out in practice!

The Ring—Mecca of Boxing

I don't indulge in too much nostalgia, I believe in living for the future, and planning for the future, but when I read of boxers and their activities in any daily paper I let my mind go back to the Mecca of Boxing, for these parts, "The Ring", Blackfriars, destroyed by enemy action.

The Ring started out as a chapel and had some connection with Rowland Hill, the founder of the penny post; he was the man who proposed the penny prepaid postage rate and was connected with other postal reforms.

It was a round building, my grandfather always said that was to keep the devil out of the corners - great pity all the pubs weren't built round, to keep my grandfather out.

Anyway it was empty when Dick Burge, the old lightweight champion, took it over in 1910 and started to promote boxing, and he carried on until his death in 1918, then his widow carried on the good work. Incidentally, it may be of interest to old music hall fans who remember the great Marie Lloyd, to know that Mrs Burge was Marie's sister.

I suppose the most famous and best known person - and there were too many to mention here - to visit The Ring was Edward VIII when he was Prince of Wales. This was pre-Mrs Simpson, it was an official visit



The Ring on the corner of Blackfriars Road and The Cut, Nov 1929

Berry had been cruiser weight champion and Daniels did go to Germany and KO'd Schmeling, the same Max who later became world heavy champ.

Dan Sullivan, match-maker and manager for Mrs Burge at that time, wanted, and got, the best for the customers, though he didn't pay the fighters a lot of money. A six rounder got a £1 and had to pay 2/6 second money and 1/0 to the whip, who was George Pankhurst. His job was always to see there were fighters ready to go on. In the dressing room George always had fighters stripped and gloved up. They were ready also

if there was some disagreement among the crowd, a bad decision about a fight, for instance. Straight away the MC George Harris would get in the ring, call for order, and the fighters for the next bout would be there. George Harris would announce them and away they would go. The crowd would quieten down.

The four seconds were all ex-boxers quite capable of giving good advice to any fighter. Also, one of them, Fred Duffie, ran a gym in Camberwell where a good number of The Ring boxers trained.

I must come back to the ques-

tion of payment, and tell you that the price of admission was very low, and also The Ring wasn't a large hall. Back stalls cost 1s/6d (new money 7½p), hard seats or stand, balcony 3/6 (new pence 17½). Quite a bit of betting went on there, in spite of notices "Betting Prohibited". Ringside was 8/6 (np 42½) and those prices gave you a great night's entertainment by some grand fighters.

Over the years I've seen many many fights and fighters, some champions, some just starting in the game, but Dan Sullivan did his best to give his Ring customers the best and he did.

And at the Blackfriars and of our old Cut we had The Ring where you could have got your brains knocked out, but at the Waterloo and you got culture to develop your brain - the Old Vic with all Bill Shakespeare's plays, what a contrast. And when the patrons came out in their evening dresses, Johnny Lewis, who had many fights at The Ring, was there with his coffee stall. "How about a sav or pork pie?" If not, across the road was Alfie Ball with his hot potato can, 1d or 2d each, no charge for the salt. Still, you can't eat a baked potato out of newspaper in a dinner jacket, can you. It must be brown paper.

George Cahill

OPEN LETTER

TO ELLIS HILLMAN, Chairman of GLC Arts and Recreation Committee.

Dear Sir,

Now that Reuters have scrapped their plans for the Commercial Wharf site at Upper Ground, perhaps the local community can have a say in the development of the site. Three years ago the Waterloo Community Development Group proposed reclaiming part of the

the Commercial Wharf site, and proposed the erection of an open air swimming pool which could be covered during the winter for other uses. I was myself involved in the proposals and correspondence between the authorities, Lambeth, the Sports Council and yourself. Everyone seemed interested, especially the Sports Council but it always came down to finance. Surely in this year of glittering Silver Jubilee there must be some sponsor around who would like to contribute for a project such as this not only for local people, but for Londoners as a whole.

As your title is Arts and Recreation, perhaps now we can have some of the Recreation side of it. We have seen enough of the Arts side, with the National Theatre (three), Royal Festival Hall, the Hayward Gallery, the National Film Theatre, and the Queen Elizabeth and the Purcell rooms. It's about time all the interested bodies got together and coughed up the capital between them.

Yours sincerely, John Hearn
Vice-chairman, Waterloo Community Development Group

YOUR VOICE - YOUR VIEWS - YOUR NEWS

Do SE1 workers make news?

Dear SE1,

Having been a firm supporter of the SE1, and the part it takes in supplying local news and events, I was most surprised to read the article on the Mercury House dispute.

I wonder if it was wise to take sides in a local firm's dispute with its employees? I feel this is not news for local people and disagree with getting involved with such cases. The Union have their means for any action required and I hardly think your readers wish to be concerned with these matters.

I am all for taking on local Government in cases of need, and the individual requirements of local residents, but think comments of this nature by SE1, could cause some readers to think you are moving towards a political policy, which I hope you will avoid. We wish to encourage firms to settle on SE1 but this sort of action could well drive them away.

SE1 Replies:

People who work in SE1 are just as much part of the area as people who live here so we think it is right to write about their issues too. And we do think that it's right to publicise struggles for more pay, better redundancy money and sick pay.

WRITE

to SE1. We want to hear your news and views. Send your letters to: SE1 Community Newspaper, 12 Maymott St, SE1, or give us a ring: 920 1643.



to hold The Ring for its charity work. I well remember the main bout. It was a 15 round contest, 3 minutes a round, between Jack Hood (Birmingham), at the time our welterweight champ, and Len Johnson, a middleweight from Manchester. Hood got the verdict on points.

Phil Scott, who was then British heavy-weight champion, signed articles with The Ring management to fight three opponents in one week. Can you imagine any of the present heavies doing that today? Monday night Jack Stanley, Thursday Tom Berry, Saturday Gipsy Daniels. And he won all three, the last two on points, the first by a KO, and remember these were all good performers.

Tenants hall lost

Planning gain sunk by offices

A TENANTS HALL AND OLD PEOPLE'S DAY CENTRE for Southwark's Scovell Road estate in the Borough has been scrapped for the time being because a nearby office development has fallen through. The developers of the old Vickers Crabtree building in Borough Road agreed last year to provide these facilities as a "planning gain" but have now abandoned their scheme as the prospective office tenant has withdrawn. The Borough Road site is owned by the City of London Corporation with the development to be undertaken by Consolidated Factory Holdings that appear to be part of an estate agents in the West End.

Planning benefits

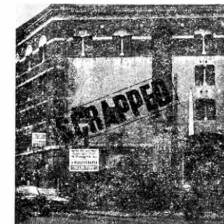
In 1975, the developers obtained an Office Development Permit for 67,000 square feet on behalf of Freeman Fox and Partners, a firm of planning and engineering consultants. Towards the end of last year it became clear that Freeman Fox did not want to move into the new office space due to the decline in their own business. Once this happened the planning permission became invalid. Consolidated Factory Holdings must now find another tenant or obtain a "speculative office permit" before they can get another planning permission.

There will probably be a long delay before this is achieved. In the meantime the "planning benefits" negotiated by Southwark Council have fallen through. For the community this is yet another example of the impossibility of planning by way of deals with developers. In the original plan of the Scovell Road housing development the tenants hall and old peoples centre were included within the housing scheme. It was only later that Southwark thought it could save some money by getting the Borough Road developers to provide the facilities as planning benefits. If Southwark had stuck with their earlier plans there would have been no mis-

take. As it is, it will now be a long wait for the tenants of Scovell Road.

Another side-effect of this sorry tale is that two small industrial firms located at the rear of 49-60 Borough Road which were to have been displaced by the office development are placed between the devil and the deep blue sea. If they move out they will probably have to pay more rent for premises that are less suitable; if they stay they are placed in more uncertainty until the developers decide whether they are going ahead.

The City Corporation are not having much luck with their attempts to develop their land for offices. As we reported last month in SE1 the aborted London Road scheme was to have been built on land owned by the Corporation.



Office scheme at Calverts Buildings, Southwark Street.



Office scheme at Central Buildings, Southwark Street. These are 2 other office schemes to be scrapped with their planning gain.



49-60 Borough Road - The site of the office scheme now scrapped. The loss of these offices means that a tenants hall and day centre have also gone.

streets apart

WHAT IS IT LIKE TO NOT LIVE ON THE SUNNY SIDE OF THE STREET, yet to be on the right side. This is what faces the residents of Brooke Drive, just off the Kennington Lane. If you live on the side facing north you are lucky.

Why the difference? Well, Brooke Drive is a street of three storey high Edwardian houses that are now being modernised. The difference is that Lambeth Council are rehabilitating one side and Southwark Council the other side.

And there is a huge difference in how the refurbishing is being carried out.

One resident, who lives on the wrong side of the street, that is the sunny side facing south but the wrong side for it is the Southwark side, stated to SE1, "I have been offered one of the modernised houses carried out by Southwark Council but after seeing what the Lambeth Council are doing to the houses on the other side of the street I refused."

Although Southwark Council are doing a fair job, they are not putting the cash and giving the same amount of attention to the modernisation programme as Lambeth.

Compare the two:

Lambeth	Southwark
Replastering and decoration	Replastering and decoration
New wooden fencing	Original brick wall
Brick bunkers to hide dustbins	Just dustbins
Complete fitted kitchens	Just a sink
Central heating plus gas fire in lounge	Gas fire in lounge

The resident stated that there is no chance of his getting a house owned by Lambeth Council in the road, so he would rather wait for another offer somewhere else.

ST THOMAS' DISTRICT Community Health Council Meeting March 15th at 7pm.

Advice & Information Centre
2-4 Cleaver Street,
Kennington
(582 3238)

SAVE OUR SHOPS

Southwark Council have taken a strong line over the future of the shops on the corner of Borough High Street and Great Dover Street.

At a planning applications committee on February 15th they decided that "the strong views of the committee should be made known to the developers". This was after Councillors Tucker and Lees had opposed the office scheme which would have meant the demolition of the shops. An earlier meeting of the committee had asked the developers to investigate the possibility of renovating the present shops and phase the scheme to cause the minimum of disruption.

The developers have declined to do this and had made no figures available to the committee to support their refusal. Chairman of the committee Councillor Potter pointed out that the number of shops in the new development was less than were at present operating in the block. He also raised the question of landlords policy being responsible for any vacant units in the block.

This is of course the case, because several shopkeepers are on 6 month redevelopment leases which means constant uncertainty. Despite the committees strong views they did not refuse the application, but chose to approach the develop-

ers once again to see if they were prepared to bend to the Council's wishes.

Whilst the Council have told the developers the shops must stay, the suggestion of Councillor Lees at the meeting that the Council should intervene and renovate the shops is the only way of ensuring their safety.

Local Residents are still alarmed and the Rev. Hawley, priest in charge of Charterhouse in Tabard St. is to lead a deputation to the Council to keep up the pressure for saving the shops.

PRINTING ERROR: In the last SE1 we had an obituary to Joe Marney. It should have read Joe Mahoney.

SE1

Southwark Council we are here



BUT YOU DO NOT SEEM TO CARE if there is anyone here or not when it comes down to handing out OUR money. Three groups in the North Southwark area applied for financial assistance by means of the Urban Aid Programme. But all three were refused.

This is not the first time - in 1975 you did the same with the Peabody Duchy Street Tenants Association's application to turn the car park at Hatfields into a recreation area. It was only that Lambeth Council and the GLC supported the application that forced your hand and made you support the project.

By turning down the three applications it shows that the only interest you have in the area is when you are passing planning applications for office developments and the change of use of houses to offices. But when it comes down to the people who live here you don't care.

The new sports centre at Colombo Street applied for urban aid to employ two workers to get the building going. All they asked for was £1200 a year, with Lambeth Council giving a similar amount. (The Sports Centre is on the boundary between the two boroughs and will serve both). The rest of the funding would have come from the Government who always give 75% of Urban Aid. The tragedy about this is that Lambeth Council gave the project a top priority, but on hearing that Southwark Council had pulled out they have had to withdraw. After all the building is in Southwark.

B.I.A.S., the information and advice centre at Blackfriars Settlement applied for a grant to enable them to continue the valuable social security, housing and industrial advice work they have been doing for three years.

The Blackfriars Community Action Team applied for money to pay for two community workers and support volunteer workers. In the past the Team has helped several tenants associations to get going and done much to get people involved in the future of the area.

The CAT team were involved in getting the crossing on Waterloo rd as reported on the front page

Bosses Not The Workers

On the 8th February 1977 you had an application from Southwark Cathedral for financial help for works to be carried out in the church, such as adding medieval bosses to the ceiling. The Planning and Development Committee did not seem perturbed when they agreed to hand out £5,000 towards the work. Like always you seem to give in to the bosses and not to the workers - that is us.

Department of Envy

SE1 like the majority of residents is staggered that the DOE the Department of the Environment has the gall to say insufficient public consultation on our local plan has taken place - our back issues are full of discussions on it.

The draft Waterloo Plan is in large part the CREATION of the local people and furthermore the draft plan fits in very well with the current government thinking on revitalising the inner city areas. What are the DOE officials playing at? Their narrow minded, legalistic - and down-right wrong-headed obstruction is a sure and certain recipe for undermining the confidence of the local community in participation, and can only lead to mounting anger and cynicism amongst the community.

One bright note though is the splendid way Lambeth have fly posted the area and also put smaller notices on lampposts all over North Lambeth advertising the public meeting on the local plan. Please take note Southwark Council.

Battle for Waterloo

Waterloo residents are feeling very angry with the latest delay in getting their proposals for the area made into a legally binding plan, and completely astonished at the incredible reason given by the Department of the Environment for the delay, which is that "there has been inadequate consultation".

As a result the plan - the same plan that we approved the Summer before last - has been sent back for local people to be consulted yet again.

For over four years now local groups have been campaigning for a stop to the building of (mostly empty) offices and insisted that both Lambeth Council and the GLC should build more family housing.

They have fought to have the area cleaned up and generally improved, and to stop the loss of jobs suitable for local people, particularly from small industries being forced out of the area since the last war.

Countless meetings were held over the past few years by both individual tenant's and other groups, but especially by the Waterloo Community Development Group, to discuss the priorities for the area and the ways in which they could be tackled.

At a series of WDC public meetings both Lambeth and GLC planning officials, and local Councillors, were involved in discussing with residents how best they could have a say in planning the future of Waterloo. So when in the summer of 1975 local people were involved with the formal public consultation by Lambeth on their 'Waterloo Draft Planning Strategy' and by the GLC with their 'Future of the South Bank' they were able to get their points across.

After a great deal of effort by residents, and with the backing of their Councillors, Lambeth chose the option which stressed housing and a stop to more offices, whilst the GLC agreed to emphasise low-rise family housing and keeping industry.

From all this the Draft Waterloo District Plan emerged, containing nearly all the demands and suggestions made by local people, and in general terms is firmly supported by those who live in the area.

Indeed it was the lobbying and pressure by local groups that forced Lambeth send the District Plan to the DOE for approval and thus make their wishes, as put down in the

ies for the area and the ways in which they could be tackled.

At a series of WDC public meetings both Lambeth and GLC planning officials, and local Councillors, were involved in discussing with residents how best they could have a say in planning the future of Waterloo.

So when in the summer of 1975 local people were involved with the formal public consultation by Lambeth on their 'Waterloo Draft Planning Strategy' and by the GLC with their 'Future of the South Bank' they were able to get their points across.

After a great deal of effort by residents, and with the backing of their Councillors, Lambeth chose the option which stressed housing and a stop to more offices, whilst the GLC agreed to emphasise low-rise family housing and keeping industry.

From all this the Draft Waterloo District Plan emerged, containing nearly all the demands and suggestions made by local people, and in general terms is firmly supported by those who live in the area.

Indeed it was the lobbying and pressure by local groups that forced Lambeth send the District Plan to the DOE for approval and thus make their wishes, as put down in the

ies for the area and the ways in which they could be tackled.

At a series of WDC public meetings both Lambeth and GLC planning officials, and local Councillors, were involved in discussing with residents how best they could have a say in planning the future of Waterloo.

So when in the summer of 1975 local people were involved with the formal public consultation by Lambeth on their 'Waterloo Draft Planning Strategy' and by the GLC with their 'Future of the South Bank' they were able to get their points across.

After a great deal of effort by residents, and with the backing of their Councillors, Lambeth chose the option which stressed housing and a stop to more offices, whilst the GLC agreed to emphasise low-rise family housing and keeping industry.

From all this the Draft Waterloo District Plan emerged, containing nearly all the demands and suggestions made by local people, and in general terms is firmly supported by those who live in the area.

Indeed it was the lobbying and pressure by local groups that forced Lambeth send the District Plan to the DOE for approval and thus make their wishes, as put down in the

ies for the area and the ways in which they could be tackled.

At a series of WDC public meetings both Lambeth and GLC planning officials, and local Councillors, were involved in discussing with residents how best they could have a say in planning the future of Waterloo.

So when in the summer of 1975 local people were involved with the formal public consultation by Lambeth on their 'Waterloo Draft Planning Strategy' and by the GLC with their 'Future of the South Bank' they were able to get their points across.

After a great deal of effort by residents, and with the backing of their Councillors, Lambeth chose the option which stressed housing and a stop to more offices, whilst the GLC agreed to emphasise low-rise family housing and keeping industry.

Why This Delay?

plan, legally enforceable on any new developer.

This would include a council such as a Conservative controlled GLC, who have already indicated they would like sky scraper offices built around here, which is the last thing this community needs.

Local Support

It is not often that local people can claim to have had such involvement in and influence on planning the future of their area. Yet after all this consultation and effort the DOE have the nerve to describe it as "inadequate"!

It is not surprising that the DOE's obstruction has provoked considerable anger and frustration amongst local residents, some of whom suspect that these bureaucratic manoeuvres hide vested interests and political motives.

Do the DOE seriously think that recent developments such as the GLC proposal for family housing on Coin Street and Doon Street, along Upper Ground behind the National Theatre and London Weekend TV, would ever have happened without pressure and encouragement from local groups?

There can be no doubt whatsoever that local opinion supports plans like this, which is exactly in line with the District Plan.

Now frustrated and confused residents have once again to tell our deaf planners what's wanted. Let's hope that this time they get the point.

Tidal Turn?

The GLC is struggling with the problem of whether to hand over to the Boroughs of Lambeth and Southwark the area of land stretching from Vauxhall to Southwark Bridge called the South Bank Comprehensive Development Area which is presently under the control of the GLC.

A report has gone to the GLC planning committee explaining the dilemma facing the GLC. The Comprehensive Development



Hat trick!

The familiar site of the three generations of Woods sweating in their premises in Flat Iron Sq., Union Street is coming to an end. This business featured in SE1 in March 76 is moving to Southend. With a hint of sadness Mr. Wood senior told SE1 that he was retiring to his flat in the Barbican leaving the business in the hands of Claude his son and Peter his grandson. Hats off to the Woods: they deserve it after thirty sweaty years in SE1.

Areas, or CDA's as they are known, were created to enable certain areas to be developed on a comprehensive basis. The South Bank CDA was declared in 1955 with the aim of getting comprehensive development through office schemes like the ministry buildings in Southwark Street.

The Labour GLC beginning in 1973 decided to reverse these policies. They undertook a programme of public consultation in 1965 which resulted in the 'Future of the South Bank' and the Planning Brief for East Bankside which, for the first time, placed housing as a priority for the South Bank and gave more emphasis than ever before to the community.

While the GLC has no fears that Lambeth will change these policies if there is a hand over to the Boroughs they are not so sure about Southwark. There is still substantial disagreement between Southwark and the GLC about the future of the Bankside and the GLC fear that if they hand over to Southwark, housing may be abandoned in favour of office development.

JOBS NOW!

say: S.E London Trade Union's

In two recent conferences, trade union representatives from East and South-East London boroughs, including Southwark, met to discuss the decline in the manufacturing and transport industries in their areas, and to formulate clear policy directives for central and local government. Their findings and programme were recently published in a report called 'JOBS NOW - THE WAY FORWARD'.

Southwark's own recent pattern of industrial losses is typical of the region. Following fast on the disastrous closure of Surrey Docks, the years 1971-74 saw a loss of over 12,000 out of 65,000 jobs in traditional industries such as paper and printing, timber, food and drink, engineering and transport.

RECENT CLOSURES OF FIRMS IN SE1 INCLUDE: Lateralset; Thornburn Bain; Nickeloid; Stevenson and Howell; British Steam Specialities; Enterprise Metal; Tollitt and Harvey; Imperial Forwarders; Haywood Williams; Decca; Southwark Off set; Petty Woods.

The more general economic recession has accelerated this process. During 1976 overall unemployment in Southwark rose by a further 18%, most redundancies occurring in industry.

The Jobs Conference underlined the factors at work in London's decline. Apart from a national drive to rationalise industry by amalgamating firms and renewing plant, which often involves a considerable loss of jobs, London faces particular difficulties. Higher costs in terms of rents, rates and wages have driven out many firms already encouraged to relocate by central Government. Shortage of suitable industrial sites and competition from office development have contributed to the squeeze. Many small firms who remain have lost their traditional outlets

which the larger firms used to provide.

The growth in office and white-collar jobs is of little use in boroughs which have a major proportion of manual workers. The Trades Councils argue that immediate action must be taken by central and local government to prevent further decline. For instance, London should be designated an Assisted Area and extra resources made available to encourage industry back into the inner zones. Planning permits for industry should be increased and financial help given for land acquisition, factory buildings and loans to firms. The activities of the National Enterprise Board should be made more localised, and nationalisation expanded to profitable areas of industry. Finally, further cutbacks in public expenditure should stop and local authorities be encouraged to attract industry with loans, contracts and environmental improvements.

Construction programmes should also be expanded, employing direct labour forces and preventing further redundancies in the hard-hit building industry.

The 'Jobs Now' report coincides with growing public concern at London's decay. Peter Shore and Bob Mellish have both made recent speeches about the need for government action; local authorities have begun to appoint Employment Officers such as Southwark's Peter Miles. However, trades unionists believe that much stronger remedies are needed, in order to create secure, well-paid employment for Londoners. At the moment, the traditional industrial area of London are fast becoming economic disaster areas.

Copies of the report may be obtained from: TOWER HAMLETS ACTION COMMITTEE ON JOBS, 58 Watney Street, London E1, Tel. 790 8342.



Lambeth free bus pass scheme

You will need a new bus pass by 1st April, 1977

How to get a new free pass

LAMBETH TOWERS DAY CENTRE
WATERLOO ACTION CENTRE

IN PERSON

(From 21st February to 1st April)
Call between 9.30am and 1.00pm or 2.00pm and 3.30pm at any of the places listed below during the week shown against the first letter of your surname.
A - D 21st February
E - K 28th February
L - R 7th March
S - Z 14th March
Any letter 21st March
Remember to take your present pass and some proof of address and identity with you to any of the following places:
COUNCIL OFFICE 1.5 Acre Lane, SW2 (next to Town Hall)
SOCIAL SERVICES OFFICES - 225 Streatham High Road, SW16
LAMBETH TOWERS DAY CENTRE 80 Kennington Road SE1
WEST NORWOOD LIBRARY Norwood High Street, SE27
WATERLOO ACTION CENTRE 14 Baylis Road, SE1 (open 11.00am to 1.00pm only)

The office at 1.5 Acre Lane will be open for renewals from 21st February to 7th April. After this date all renewals and issues will be at Blue Star House, 234 Stockwell Road, SW9 ONLY.

NEW APPLICANTS Those applying for a pass for the first time (men of 65 and over and women of 60 and over) should go in person to any of the offices listed above. Take with you your retirement pension book or some other evidence of your age, address and identity.

Those under pension age who are physically or severely mentally handicapped or registered blind but who are able to travel by bus may renew existing passes BY POST ONLY (see above). Application forms for new handicapped applicants aged 5 years and over may be obtained from Blue Star House, 234 Stockwell Road, SW9 or any Social Services Office.

YOU SHOULD HAVE A NEW PASS FOR BUS TRAVEL BY 1st APRIL, 1977

BY POST

(From 21st February)
Send YOUR PRESENT PASS AND AN ENVELOPE to: Lambeth Social Services (C) Blue Star House, 234 Stockwell Road, SW9. Remember that you will not be able to travel free whilst your pass is in the post. Your new pass will be sent by return of post.



12 Meymott Street, SE1.
tel: 928-1643

In next month's SE1

It's up to you! All the stories, news and articles in SE1 are contributed by local people. Maybe you know of something which would be news to someone else, or maybe you are organising some event and would like to publicise it. Send in your news or give us a ring.

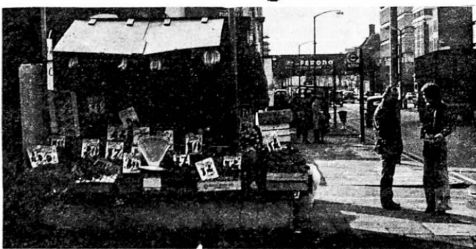
Why not come to one of the meetings listed below where we sort out what will go in the next issue?

SE1 dates for 1977

Issue No.	Meetings Mondays	Last copy Date	Paste-up	Publication Month
19	14 & 21 March	21 March	26/27 March	1st April
20	11/18 April	18 April	23/24 April	29 April
21	9/16 May	16 May	21/22 May	27 May
22	13/20 June	20 June	25/26 June	1st July
23	11/18 July	18 July	23/24 July	29 July
24	15/22 August	22 August	27/28 Aug	2 Sept
25	12/19 Sept	19 Sept	24/25 Sept	30 Sept
26	17/24 October	24 Oct	29/30 Oct	4th Nov
27	21/28 November	28 Nov	3/4 Dec	9th Dec

Meetings start at 7.30pm at 12 Meymott Street, SE1.
Paste-up starts at 11.00am each day, at SE1 office, 12 Meymott St

Stall at the lights...



A New Venture: a fruit and veg. stall has been set up at the corner of Southwark Bridge Road and Blackfriars Road - claims to have the cheapest potatoes: 100p and it's only open Mon - Fri, 9 to 5.

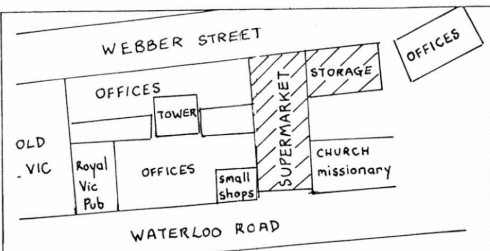
Hays Wharf A.G.M.

At exactly 12.00 on January 27th in the Norfolk Room of the Great Eastern Hotel Liverpool St, the annual general meeting of the Proprietors of Hays Wharf Ltd. began, with about 30 shareholders in attendance. There was only one question: from your SE1 correspondent. It concerned the plans of the company for the area of semi derelict land at the Tower Bridge end of Hays Wharf. (see back page). The Chairman - Sir David Burnett indicated that the company are not seeking redevelopment in the next few years, apart from the temporary concert site and ecological park. When asked whether there would be any housing on the site, something the local people of Tooley St have been pushing for, he said, "In my opinion this site is not suitable for housing." Obviously the company will say anything to

Who Reads SE1

SE1 is sold to some 1400 people each month - which means it's probably read by about 3 or 4 thousand people. Many of these copies are sold through tenants associations, trade union branches and community centres; and many through pubs, social centres and churches, and through the dozen or so newagents who stock the paper without charging a commission. Among the readers are known to be local councillors and council officers. SE1 was mentioned twice at a recent GLC meeting.

SE1 is an independent paper - it receives no subsidy from any public body, local council, CIA or KGB. It is supported by the cover price of 8p and the few advertisements.



New plan for David Greig's

Within the last month there have been 5 meetings between different combinations of GLC, Lambeth, the developer and WDCG. The latest proposal would give the developer planning permission for building 138,000 sq.ft. of offices in return for providing premises for 10,000 sq.ft. supermarket and land in Gray St. on which Lambeth Council could build housing. The developer claims that Royal Arsenal Co-op Society are very interested in

the proposal and that they consider it a viable proposition in size and location. This needs confirmation by RACS and a real agreement between RACS and the developer on the cost and length of the rental. If RACS convince us that the supermarket is a completely realistic proposal, especially in rental terms, then we think we could support it. This will be discussed further at the open meeting at Waterloo Action Centre on 22nd February.

WHAT'S ON

MUSIC

Brahms Requiem and Dvorak Te Deum. Saturday 12 March at 7.30pm at Southwark Cathedral. Dulwich Choral Society, Jacquelyn Fugella, Roger Cleverdon, The Ruskin Orchestra, conductor: Graham Stewart. Tickets £1.20, 90p, 60p at the door or phone 01-274 2598.
Family Concert: Sounding Brass. Brass Band and Elmwood Junior School Steel Band. 5 March at 10.30am, Morley College, 61 Westminster Bridge Road, SE1. Adults 25p, kids 5p.
Family Concert: Music Together. Symphony Orchestra conducted by Guy Wolfenden. 26 March at 10.30am. Morley College, 61 Westminster Bridge Road, SE1. Adults 25p, kids 5p.
School Bands at County Hall. William Ellis School Band. Friday 11 March in the Conference Hall at County Hall at 12.45pm. Free.

OVAL HOUSE 54 Kennington Oval, SE11.

Profiles in Controlled Light. Lighting design by computer conceived by Steve Whitson et al. Thurs 10 - Sun 13th March. 7.45pm
Penthesilea from SALT Theatre Co. The Queen of the Amazon clashes with Achilles in the war of the sexes. 17th-20th March at 7.45pm.
Pauline Edmet/Elaine Loudon in a new two woman show.

18th-20th March at 9.30pm.

Numbers by Richard Quirk, presented by Robin Fairfield. A selection of sketches presented as a cabaret entertainment.

24th-27th March at 7.45pm.

Battersea Arts Centre Drama Workshop in their new show.

25th-27th March at 9.30pm.

Guys Community Health Council Meeting. 24th March at 6.30pm at St Olaves Hospital, Lower Road, SE16.

WATERLOO ACTION CENTRE 14 Baylis Road, SE1. 261 1404.

Metropolitan Display, manned 10 - 2 by volunteers. 28 Feb to 11 Mar
How your Council Works Exhibition in window. 17 March.
Through Socialist Eyes Exhibition by Battersea Collective, 6 - 13 March.

JOHN HARVARD LIBRARY

The new library at 211 Borough High Street opens on Monday March 7th. It will be open every day 9.30 - 8pm except Wednesday closes 5pm, Saturday closes 1pm, Sunday closed all day.

Support Your Local Shop

- fresh milk daily
- newspapers
- frozen foods
- confectioners & tobacconists
- all groceries & provisions
- hot snacks, rolls and sandwiches to take away

Green Shield Stamps on all items. Double Stamp Saturdays.

Tnos. E. Davies & Co (TOMS) 137 Southwark Bridge Road, SE1

YOUR RIGHTS

Help with your electricity bill

- electricity Discount Scheme

You may have heard rumours about the government's plan to give a 25% reduction from winter electricity bills.

This scheme is now working and it is called the Electricity Discount Scheme. (There is no scheme to reduce gas bills.)

Only certain people can benefit from the scheme:

- You must be claiming Supplementary Benefit (or supplementary pension) or Family Income Supplement (FIS)

All claimants of Supplementary Benefit and FIS should have received a leaflet explaining the scheme - either from the post office when cashing their giro or order books or through the post with their giro. If you haven't seen one of the leaflets then ask for one at the post office.

HOW TO CLAIM THE DISCOUNT

1. IF YOU GET A QUARTERLY BILL

a. WAIT until you get an electricity bill which is for a meter reading taken in February, March or April

b. GO TO THE POST OFFICE - When you cash your giro or order book, take your electricity bill with you. You will need some identification which shows your address - an order book should be enough but if you get a giro take your signing on card.

The post office will give you a voucher showing how much discount you should get.

c. PAY THE BILL

i. if you pay at the LEB showroom take your bill and post office voucher there

ii. if you pay at the post office through National Giro include your voucher with your bill when you pay it

2. IF YOU HAVE A SLOT METER WHICH IS EMPTIED BY THE LEB

a. WAIT for the meter to be emptied in February, March or April. The person who empties the meter will leave a printed leaflet with you. If you are entitled to a discount then fill in the leaflet and send it off in the stamped addressed envelope provided.

b. WAIT while the LEB check that you are entitled to receive the discount. They will send you a form which will say:

- (i) you can claim some money back, or (less likely)
- (ii) you still owe some money because your meter isn't set properly

c. GO TO THE POST OFFICE with the form from the LEB

(i) if you can claim some money back then the post office will give you the cash

(ii) if you still owe some money the post office will give you a voucher which you should take to the LEB showroom and pay the outstanding amount.

3. IF YOU PAY WEEKLY OR MONTHLY OR IF THE DHSS DEDUCT MONEY FROM YOUR WEEKLY MONEY

If you have an arrangement to pay your electricity bill weekly or monthly or if the DHSS deduct money from your weekly payment for your bill you are still entitled to the discount. When you receive your bill take it to the post office to obtain a voucher as described above.

Then send the voucher to the LEB who will credit it to your account

THIS SCHEME IS COMPLICATED - If you have any difficulty following it or you're not sure whether or not you can claim a discount then contact BIAS at Blackfriars Settlement, 44 Nelson Square, SE1 or the Waterloo Action Centre, 14 Baylis Road, SE1 where copies of the leaflet are also available.



If You're a Mum
With a Toddler,
Make Sure
You've Got
Your
HANDFUL

London Borough of Southwark Road Safety Campaign

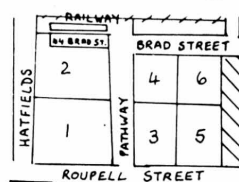
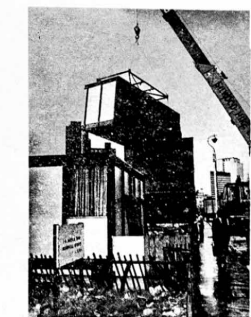
Hatch Row mess up

THE GLC, IN AN OPERATION in which the desire of the elector: councillors to respond to local needs has been matched by the incompetence and negligence of the bureaucrats they are responsible for, has succeeded in ordering the removal of four pre-fab. houses without either the water or gas mains being disconnected.

The result, for three people still living on the site, has been fountains of water outside and nothing but a trickle in their own pipes, and the smell of gas both outdoors and in, with gas pressure reduced so much they had to go out for meals.

For Ms Sharp and her daughter and for Ms Roberts, there have been days and nights of worry and frustration. They live on the Hatch Row site, at the Hatfields end of Roupell Street and Brad Street. SE1 readers may remember that this is the site where family housing is soon to be built, after GLC Housing Chairman Richard Balfe changed an original scheme for a student hostel when he heard of local objections to the idea.

Ms Roberts explained the worries to SE1: 'I came back from a shopping expedition and discovered that where a house had been, there was an area of rubble and gas and water mains were pumping out their endless supplies.'



A further worry, explains Ms Roberts, is the exposed state of the site now that four homes have been removed. She points out that the area will become a dumping ground, playground and thoroughfare in no time, and wants temporary fencing erected to prevent this (See map).

But what neither Ms. Sharo, nor Ms Roberts yet know is when they will be rehoused, nor where. Although they are legally the tenants of a private agency which will only offer other short-term homes, GLC Housing Chairman Richard Balfe has said that the GLC will rehouse them if need be. But neither of them have yet heard anything clear about this - except a letter to Ms Sharo from a GLC official which made a point of saying that it was not an offer of housing.

Frustration has been mounting with the difficulty of finding anyone at County Hall who was prepared to take responsibility for the problem. In for a long time it was impossible to find anyone who accepted that there was a problem - from Richard Balfe, who until late in the day was led to believe that no-one was living on the site anyway, to a Mr Knight, who when Ms. Roberts rang him up about the free flow of gas and the reduction in her supply, apparently replied 'Oh, it's only dangerous in a confined space'. But what about Ms Sharp, a senior citizen with a heart condition, who came back from shopping to find her house full of the smell of gas because, with the pressure reduced all the pilots had gone out - and no hot water?

Trespass meeting

THE SUCCESS OF DIRECT ACTION has led to the introduction of the Criminal Trespass Bill. Stephen Barran of South London CACT pointed out the danger of even more vicious amendments now being proposed by Tory peers. These include one which would allow any property owner to use force to evict anyone from their property without going to court (the present Bill limits it to property that is actually being lived in).

A demonstration is to be held on Saturday March 19th. Assemble at Cardington St by Euston Station at 1.45, march to rally at Highbury Fields via the Elizabeth Garrett Anderson Hospital Occupation.

Borough Library Booked

Now that the Library in Southwark Bridge Road has closed and moved to a new building in Borough High Street, the future of the old building is being discussed.

For several years local associations such as Peabody Southwark Street T.A. and Douglas, Ilfracombe and Monarch buildings TA have been pushing for a community building in the area. More recently other groups such as Mint St. Playground and NSCDG have suggested that when the Library did close it should become a community centre, and Ron Watts, Chairman of Southwark's planning committee has given support to the idea.

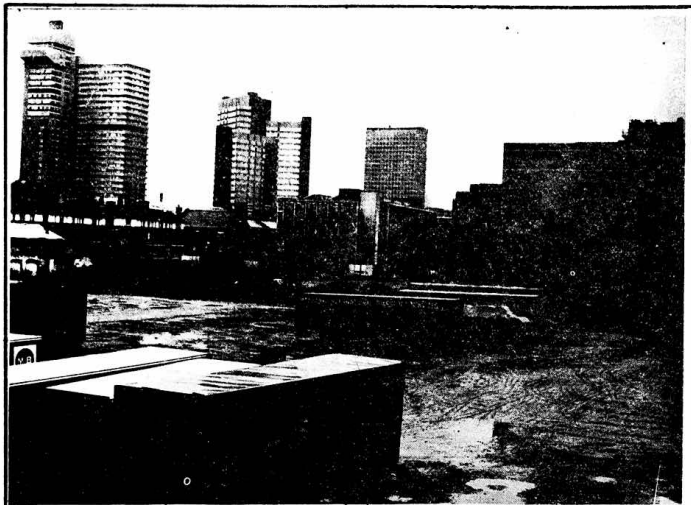
A steering committee of local people from a number of local estates and associations has formed to get the building back in use, and they have written to the Council to start discussions on how best this can be achieved. However at a meeting on February 9th of Southwark Libraries and Amenities Committee a decision was taken to hand the building over to the planning committee for them to dispose of as the Libraries and Amenities Committee had no further use for it. This was despite an attempt by the Chairman of the Committee Len Henley to postpone any decision until a meeting could be arranged with local people. The fact that the bulk of the councillors on the committee come from Peckham and Dulwich could have something to do with the lack of support.

This has not deterred local people from pushing ahead with their plans. They still feel it is important to establish the principle that the old library should be used by the community. Details of any financial arrangements can be thrashed out later.

John Holsgrove of Douglas, Ilfracombe and Monarch Buildings and also a member of the local committee told SE1 "Let's hope we get more satisfaction out of the Planning Committee".

Downs Bros latest

The latest news from Down Brothers, surgical instrument makers in Tabard St. (featured in last month's "SE1") is that a deputation from the works has been to see local MP Bob Mellish at the House of Commons to enlist his support in their fight against short-time working. Now Bob Mellish is to visit the plant on a fact-finding visit and will be holding talks with the management to see if there is anything that can be done. Matters to be dealt with include the effect of government cut-backs on health service equipment orders, and also the import of cheap instruments from Pakistan



Potters Fields, Tooley Street, now alorrry park, soon to be a site for the concert arena and ecological park. The concerts last to October, the park for 8 years. Bethel Estate backs onto the site.

Tooley trippers

A 7,000 seat concert tent, the largest in Europe, is to be erected this summer on Potters Fields to add to the growing trippers' invasion of Tooley Street. An "ecological park" is due to be laid out behind Bethel Estate in time for the Jubilee celebrations and already we have HMS Belfast alongside Morgan's Stairs.

The concert site idea comes from a promoter called Richard Wrigley whose aim is to attract a wide range of popular music performers to the big top. He told "SE1" that the artists would include Procol Harum, Sacha Distel and stars from the USA. Proceeds from the concerts will go partly to pay any expenses but the profits will be forwarded to the Queen's Jubilee Appeal, a charity for youth activities.

Although the concert tent will only be in operation for four months, there is concern among Tooley Street residents that the project might become

permanent and prejudice the long term wishes of local residents for council housing and open space on the eastern end of Hays Wharf. There are rumours that Lord Delfont is following the project with interest because if it is successful, he may seek a longer term concert scheme.

In order for the concert tent to go up, alternative provision will have to be made for the lorry park now on the site. It has been agreed by the authorities that a suitable alternative can be found further up Hays Wharf along Braidwood Street but there is some concern in the locality that this may not be adequate because it is a smaller parking area.

Another cause for some concern is the car parking that will be generated by the tent and the other attractions. Apparently, the police have expressed reservations about this to Southwark.

GLC yes to Bankside houses

THE GLC'S SOUTH AREA PLANNING BOARD agreed a document at a meeting on 24th January which sets out details of what they would like to see on sites on East Bankside. This is the culmination of two years of lobbying and representations by local people on the one hand and developers and the World Centre for Shakespeare Studies on the other.

The document, which was drawn up by the Labour GLC, substantially supports the wishes and ideas of Bankside residents. The most important of these was the designation of a major new site for housing. This site stretches back from the river to Park Street and is bounded by Emerson Street and the Bankside Power Station. The GLC want this site of around four acres to be developed for fam-

ily housing: "The development of family housing units would be welcomed and the provision of low-rise housing would help to balance the type of housing in the area." Moreover, they add that any office development "will not be permissible unless preceded or accompanied by family housing development".

The conflict over the Globe Theatre has now been partially resolved by the GLC's suggestion that if it is going to be on Bankside at all then it should be on the east side of Emerson Street rather than on the family housing site.

At the same meeting where these details were approved, the GLC granted conditional planning permission for family units on East Bankside. These will be developed by the Family Housing Association.

Matters Arising....

ELEPHANT AND CASTLE RECREATION CENTRE

With the construction of the swimming pool under way, Southwark Council have now submitted plans for stage two which will contain squash courts, a sports hall, sauna, social recreation area, and lounge bar.

MORE SHOPS CLOSE ON TOOLEY STREET

A general shop and a cafe have closed during the past few weeks on the north side of Tooley Street near Bethel Estate. On the other side of the street, however, the Tower Mini-Market seems to be doing well.

WELCOME BACK TO BERMONDSEY.

On Monty Modlyn's show on LBC Bob Mellish told listeners that he would see that there was new housing on Tooley St so that people who had been moved out could come back.

LONDON ROAD BUS LANE

A bus lane is to be introduced in London Road to run from Thomas Doyle Street to the Elephant. It is unusual in that most bus lanes are on the going to-work side of the road. This is one of the few to speed workers on their way home.

ST MARTIN'S PROPERTY CORPORATION

(wholly owned by the Kuwait Government) has got planning permission to convert the Frank Love building in Westminster Bridge Road into 21,000 square feet of offices for "Oakwood Securities" (a subsidiary of Frank Love's). At a public enquiry in 1975 they succeeded (without an Office Development Permit) in getting permission for 11,000 square feet of offices and 10,000 square feet of showrooms. Now, armed with an ODP, they have been allowed to change the showrooms into offices. This sets a dangerous precedent.

Well done WELLINGTON MILLS Co-operative! At the recent elections 98 % of the members voted.

COLOMBO STREET SPORTS & Community Jubilee Centre

would like to publicise the kindness and generosity shown by F W Woolworth & Co Ltd for their donation of paint (worth £400) Received with thanks !

FIRST CLASS SERVICE

was shown by Southwark's Engineers Department with quick action when asked to clear a drain in the middle of a Zebra crossing at the corner of King Edward Walk and Lambeth Road.

Every time it rained a flood took place and the Zebra was losing two of its stripes, making the crossing very difficult and dangerous for pedestrians to cross.