



# Tories wreck South Bank housing for hotel

A 600-BED HOTEL may replace family housing on the Coin Street site in Waterloo. The new GLC administration is writing to the Heron Corporation to say that it is "very interested" in a proposal to build a 600-bed skyscraper hotel on publically-owned land set aside for the Coin St Housing development between Stamford Street and the river.

The GLC decision was taken at a closed-to-the-public meeting of senior GLC Tories after an approach from the giant Heron Corporation. Heron has submitted a plan for a hotel on this site (behind the National Theatre) in 1970, but the last GLC stopped negotiations in 1975 after Heron said the development would be uneconomic unless it included a "very substantial quantity of offices".

At the time, both the GLC and Lambeth Council were holding public consultations about the future of the Waterloo area, and following strong demands by local residents, both councils agreed to earmark the Coin Street/Doon St. sites for housing.

In February this year, the GLC approved plans for 77 family houses, 42 old peoples' flats, and 92 other dwellings. Twenty-four tenants' associations and local groups signed a statement congratulating them and urging them to get on with the building work.

Then in May the Tories took over at

County Hall, and the scheme was called in 'for review'. At the end of June, news leaked out that George Tremlett, GLC Housing Chairman, had authorised work to continue, but on the basis that the houses should be sold off when completed.

Local groups were just beginning to wonder how people from North Lambeth and North Southwark would ever be able to afford the sort of prices that would be demanded, when news broke of Heron's approach to the GLC.

## GLC owned

The Waterloo and North Southwark Community Development Groups immediately arranged a press statement (see the story in 'Time Out' July 22-28 issue) while the Association of Waterloo Groups called a meeting on July 27th to form an Action Committee. (Anyone prepared to help should contact the Waterloo Action Centre, 261-1404).

The Community Development Groups' statement points out that Coin Street is one of the few sites and by far the largest site available in Waterloo for new housing. The GLC have said that the high costs of land acquisition mean that only land already in their possession is likely to be developed for housing. This is why, after considering the 'Future of the South Bank' report, they agreed that "where the GLC owns vacant land, or acquires land, within the South Bank CDA, in general only residential or industrial use should be allowed." The Coin Street sites were bought by the LCC in 1953.

Downstream at King's Reach the Melia Buckley hotel stands empty. £15 million have already been spent on the building but at least another £9 million are needed to put in electrical and mechanical services and inside walls and doors.

## By George he's got it →

LORD GEORGE-BROWN seen reading our last issue of SE1 given to him by our reporter after revisiting the area.

Remember, he was born locally in Peabody Buildings, Blackfriars Rd years and years ago.



## Bethel Estate Tenants say how long

Bethel Estate tenants crowded into Bob Mellish's surgery last week demanding to know how much longer they are going to be pawns in the wheeling and dealing between Southwark and Hays Wharf over the future of Tooley Street. A petition was presented saying that residents should either be rehoused or modernised immediately. They refuse to put up any longer with mildew, damp, lack of electric points, and continued uncertainty.

Mrs. Rogers, who lives with her husband and two children in a one bedroom flat, said "Conditions are deplorable, everyone is fed up with it, two people have bedrooms they can't use because of the damp, two others have leaking roofs, one has been asking for something to be done for five years without any success."

Southwark's Housing Department say that Bethel, a Southwark estate, is not being considered either for demolition or for modernisation. They suggested that the Planning Department might be able to help. Mr. Griffiths, the Director of Development at Planning says that Bethel's future depends on the

outcome of the North Southwark Local Plan. But the catch here is that this Plan might not be resolved for two years and even then Bethel's future is linked to Southwark's deals with Hays wharf. In the meantime, it is suggested that the Housing Department might be able to help And so it goes on and on.

The Proprietors of Hays Wharf whose land surrounds Bethel have shelved their grandiose plans of 1971 which put forward comprehensive office development. Now their approach is described as "piecemeal". They have started

with a new office at New Hibernia Wharf, the new Crown Courts, the ecological park (see page three), and of course, the Jubilee walkway.

The file on Bethel goes back a long way. Some tenants may remember that a public meeting was held on the same issues as the deputation last week way back in October 1972. At that time, Southwark didn't listen, being drunk on the prospects of multi-million pound offices and hotels. Will they listen now, this is the question everyone wants an answer to.



Another Story

Continued on back page.

## Church builds in conservation area ?

Dear SE1,  
I read your article "Blessed Offices" first with anger, then with a sense of real sorrow. Like many others, I have relied on your integrity and accuracy in the past as a trustworthy guide to my own community action.

There is, I fear, no point in attempting publicly to refute a 'loaded' and inaccurate article, since the damage is already done and more words cannot undo it. But in order to set the record straight, may I make a number of points?

1. The plan to build the Royal College of Nursing (why just call it 'offices'?) on the extended site of the Archbishop Davidson Institute has been discussed publicly for the last seven years and outline planning permission notices went up on July 3rd 1970. I do not know of any other local group except the Anglican Church which was then vigilant and took the closest critical interest in the plans. They were not proceeded with at the time because the economic situation forced the Royal College of Nursing to withdraw.

2. I know of no evidence that the developers have 'timed' their application with great skill 'nor that the last GLC would have rejected it.

3. It is true that 'quite a difference it will make from the present view'. You do not tell your readers what the present view is. Are you really maintaining that the view will be worse than that of one near derelict building with corrugated iron in the windows and another which is architecturally poor and for which no community use can be found?

4. To say that 'The Church' is developing the site is again misleading. The local Anglican Church is now implicated in that it said many years ago that having made quite certain that there are plenty of other and better halls in the vicinity available for community use, it was prepared to let the ADI go.

We are a small local group who have worked for ten years or more to do something with this building. You may not like what is proposed (and which necessarily involves us through our ownership of the Institute) but please don't tell us we are not 'local' or 'community'. Further we are the ones who are paying, by the decay of our neighbourhood, and are being forced to raise money to repair derelict buildings.

Finally, may I say that I hate having to write like this: it is too much like shouting to one's neighbours over a high wall. You care about this area - so do I. Throughout the 35 years that I have lived here I have been involved in community concerns and action. Can we not meet and talk things over?

Yours sincerely,  
Mrs Doris Nicholls,  
23 Walcot Square, SE1.  
Churchwarden, North Lambeth Parish.



COMPARE the two views - as it will be, above - & now, below.



SE1 DENIES: the story was loaded or inaccurate, and replies :

This development has not been discussed publicly for the last seven years. That original permission lapsed some time ago. Since then local people have become much more organised, and our story was particularly concerned about consultations with local groups over the last three or four years when 'The Future of the South Bank' (GLC) plan and the Waterloo District Plan (Lambeth) were being prepared and this Park was being declared a Conservation area. At no time during these discussions was this development raised by those who knew of its existence.

We repeat our main point, that whilst all this consultation was going on and at the same time as council officials were discussing these offices with the developers, they said nothing to local groups.

Our statement that the application was timed with great skill was based on the views of the different planning Church women put to SE1 in an interview before the election (see issue 19) and their different actions when it comes to issues

like Coin Street - read the story on page 1 of this issue. Some comments from people who prefer to remain anonymous suggest the last GLC had shown support for the proposal over a year ago. We still maintain Lillias Gillies would be more responsive to local views than Shelagh Roberts.

Mrs Nicholls describes the view from the road. We are concerned about the effect on the Park. Compare the views above.

This development would not be possible without the support of the Church Commissioners. We accept that the Parish were the only people to object to the original 1970 plan - but not to this version - and that not all members of the local congregation agree with what the Commissioners have allowed.

Local objections are not concerned about losing the ADI hall but about a much bigger building taking up all the garden and dominating the Park being put there instead.

We are happy to have put Mrs Nicholls in touch with other groups and will report any further developments.

## OVAL MEMORIES by Jack Moore

Getting my free pass to the Oval, my mind slipped back six years ago to my first visit. It was during the First World War, a Sunday School trip from Montford Place Mission Hall arranged through the Head Groundsman. A good time was had despite few goodies, which at that time were almost unobtainable.

Gas balloons used to go up daily. In the great basket suspended from the gas-bag were the crew, with rope anchors & bags of sand. When they wanted to go higher they would drop sand, sometimes into our garden.

Like the Second War, a searchlight and anti-aircraft gun operated from the ground. I well remember once a fairly large piece of shrapnel falling through our roof. After that when an air-raid was coming my Mother took us to Vauxhall Walk arches. That was not a good idea because when a bomb dropped on Lennox Buildings in Wandsworth Rd she popped me into a cream churn and it took

firemen some time to get me out!

The air-raid warning was given by a man who knocked on your door if you had a white mark on the wall. Boy Scouts gave the all-clear on their bugles.

The War over, cricket started again. Great crowds assembled and before Test Matches people lined up days beforehand. I spent many happy hours watching from our bedroom windows till they built a stand to end our viewing.

The just rewards from odd jobs helped supplement the scarce family income. A Test Match paid 5/- from 8.0 am till the rubbish was cleared up at about 9.0 pm or even later.

All those years I supported Surrey, paying legally through the turnstiles.

I still believe those early years trying to scrape a bob or two were the best because it threw out a challenge to stand on one's own feet. Hungry days but one had respect.

## Tooley St Tourists

Dear SE1,  
Noting the number of foreign tourist coaches going through Tooley Street each with the guides giving their versions of what's what in the Street, it was thought it might be of interest SE1 readers to hear a guide on the street written as if looked at from the local's aspect. In this case the version would be very different. From the local version the most notable view would be the monumental tombstone of Harry Hyams at London Bridge, erected over 10 years ago and still only partially occupied. The best example of speculative office building. How to make a fortune without giving any service - something to do with planning.

The next 'sight' must be Hays Wharf offices, the white Sepulchre erected on the site of St Olav Church and now the home of the present squires and feudal landlords of Tooley St. They have decreed that the land shall remain derelict for seven or more years in the sacred name of profits.

Next might be the streets called English and Irish Grounds, the separate camp sites, as the names imply, where the different sets of Navigators or Navies were permitted to live during the railway construction work. It shows that the principle of divide and rule has been around for a long time.

Next, look at the prime river sites with their ruins of speculative plans for Hotel Cities within a City, etc, but all you can find is an unpaved car and lorry park plus a small ecological park cleared and planted by voluntary labour. Otherwise the rest of the view is of corrugated iron fences and the rash of 'Office to Let' signs. This is big business ideal site.

So much for business influence, what about the local council? The most noticeable from the tourist aspect are the closed toilets, part of the % cuts. Next are the wines and muthers who accost visitors and residents alike. Care must be taken not to stumble over the uneven footpaths and to avoid the free showers from the holes in the road which are given after rain.

What about other major facilities? Shopping: if you blink your eyes you will miss the shopping centre, what is left of it, the one all-purpose shop which the locals fought the council to retain. Housing is a subject best glossed over, rehabilitated flats which have remained empty for months, blocks of flats without power points, and so on. There was a library, but this was closed to make way for the hotel entrance but the site stood empty for 6 years and has only just been paved over, a Jubilee bonus.

Yours sincerely,  
Jim Patrick.

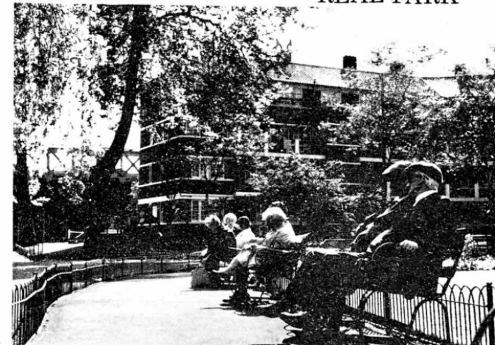


## Tooley Streets Three Parks Lorry Park and Ecological Park

This fenced-in wasteland on Hays Wharf is the William Curtis Ecological Park, a pioneering venture of the Conservancy Corps, Kew Gardens, the Royal Society for the Protection of Birds and many others. It is described as 'habitats for London's flora and fauna', ranging from a 'reed-fringed pool' to 'heaps of characteristic bomb-site debris and vegetation'. Looking at it, it isn't difficult to agree that it looks like a bomb-site.

After 10 years of struggling for housing and open space on Hays Wharf, what the residents of Tooley Street see instead is ecological entertainment for weary travellers on the Jubilee Walkway. But don't think that we will be able to ignore it. The publicity blurb say 'The park must (!) be demonstrated and explained to local people of all ages who it is hoped will take pride in this new green oasis (?) in an area long blighted by dereliction.'

## REAL PARK



## Medieval toilets

Just as Southwark Council are closing all the toilets in North Southwark the SAEC have unearthed what could be a medieval cess pit on the site of the first St. Thomas hospital. This timely discovery is unlikely to relieve residents for long however as the archaeologists working on the site have only a few weeks to discover its secrets before it too is preserved for good in the concrete foundations of a new office building in St Thomas Street.

## WRITE

to SE1. We want to hear your news and views. Send your letters to: SE1 Community Newspaper, 12 Meymott St, SE1. or give us a ring: 928 1643.

North Southwark Community Development Group



UNION ST. a plan to protect industrial jobs.

Published by NORTH SOUTHWARK COMMUNITY DEVELOPMENT GROUP, July 1971. This Report on the job prospects for the Union Street area is available free from NSDCG, 108 St Guildford St, SE1. 928 1643. SE1 will report next Month.

## The Crown toppled

One of the few remaining original buildings in the so called 'Borough High Street Conservation Area' the Crown Pub is being torn down to make way for newcomers to the street Gill & Dufus's canteen.

Once again Southwark's sham conservation policy for Borough High St. is revealed for what it is, a smoke-screen for office developments to take over the whole of the street. Conveniently the Crown was found to be in a 'dangerous' condition. The convenience of this discovery can be seen from the fact that if the Crown had been allowed to stay as a pub, people would still be drinking there, and would be for many a year. Rumoured at one time to have had 'Jack the Ripper' as a barman, it has taken Southwark Council to finally lay the legend to rest along with the ashes of their conservation policy.

Ironically this has come as Southwark Council have sent out a pamphlet to developers on 'The design of Shop Fronts' in the Borough High Street. The guide is more salt in the wound, as Borough High Street has been destroyed as a shopping area, and is no more than window dressing telling developers how they can make their offices LOOK like shops. Well we won't buy it but Southwark Council are dumb enough to. BUT.....

The only hope for any buildings being conserved in or around Borough High Street seems to come from the Southwark Archaeological Excavation Committee, SAEC who are literally unearthing historic buildings, and when they have researched them bury them again. This at least guarantees that their finds are kept safe from the destruction of Southwark planners, even if it does mean that their finds are being preserved underneath the many office blocks replacing the buildings above ground.

## GET YOUR HISTORY HERE

Following our article in the June issue on the local history department of Southwark Council, the librarian tells us that the watercolours by the Cuming family are at the South London Art Gallery. The photo of St. Mary Overy's Dock on page 2 of the June issue was taken by Henry Dixon in 1881 for the Society for Photographic Relics

## SE1

12 Meymott Street, SE1.  
tel: 928-1643

SE1 is a Community Newspaper - this means it is run by local people who live or work in the area. It is non-profit making and no-one gets paid (not even the newagents or pubs which sell it). The newspaper is open to anyone to contribute - news items, articles, stories, letters etc.

Editorial and management decisions are taken at the meetings (see below) which are held twice a month and are open to anyone who lives or works in SE1.

Remember, we rely on you for the news and gossip of SE1 so send in your information or give us a ring.....

MEETINGS  
Mondays 15th and 22nd August 7.30pm.

Last day for articles to go into the next issue is Monday 22nd August. Stop Press - as articles by Friday 26th August

Help prepare the paper - great fun typing, thinking up headlines and gluing down the stories - weekend of 27th and 28th August, 11am to, say, 7pm or whenever we finish.

NEXT ISSUE ON Friday 2 Sept

## Local Plan Reminder

to tenants associations, all community groups and individuals. In the next stage of consultation for the North Southwark Local Plan, Southwark Council is asking for views and ideas on what you would like to see in your area. Write by 1st Sept to Director of Development, 30 Peckham Rd, SE5. 703 6311 extension 328.

## Bankside

Behind the backs of the residents of Bankside, Southwark Council are asking the Government for money to buy the East Bankside site - where local residents want to see housing - for offices! If the Government grants loan sanction for the £3 million or so required to buy the site (Southwark already owns part of it) it will make nonsense of the Government's policy of using the Community Land Act for projects that are of use to the community. Protests have been made to the Government by the NSDCG....

## DENTURE REPAIR While You Wait

ARTIFICIAL TEETH REPAIRERS LTD.  
50 Kennington Rd  
LONDON SE1  
01-928-4058





## Strollers set the pace

SOUTHWARK STROLLERS XI scraped home by 6 runs against Glyn Rowlands' Renegades at Southwark Park on Sunday July 17th. The Strollers, an occasional team of North Southwark people are at last beginning to show what they are capable of.

In spite of an indescribably dangerous pitch running twice as fast as Lindwall's famous 1952 Sydney Test, the Strollers piled up a respectable score of 108 for 6 with Tony Hawley and Mike Robinson making most of the runs. But even under the pressure of good bowling by the Strollers' openers, the Renegades kept up their scoring rate and it looked as if they would squeeze in.

But when skipper Glyn Rowlands and another resisting batsman went out with one over to go, the likelihood of victory suddenly switched to the Strollers.

Humiliation at the hands of the Canterbury Casuals was the result of the Stroller's match at Blackheath. Playing in glorious sunshine, the Strollers were unable to dislodge the Casuals' big hitters who left the Strollers to make 184. The Strollers' batsmen were unable to create any stand and wickets

kept falling. In the end they were all out for 86 with Ted Bowman the creditable 'not out' batsman.

An evening match at Crystal Palace against a scratch team from the South London Press produced a convincing victory for the Southwark Strollers. Ace Young Reporter of the Year, Richard Woolveridge, captained the SLP and showed a touch of public school class, shining as opening batsman and useful bowler. The South London Press scored 47 all out and Strollers 42 for 5 in a 20 over-a-side match. Chris Brown, pastor of Lansdown Medical Mission, made a useful start to his Strollers career, and promises much for the future.

The month of August promises to be a tough one for the Strollers with one match and sometimes two every week. With many of the regulars away on holiday this could be the time for new talent or old to find its way into the side, so anyone fancying a game against such giants of cricket as the Gas Board or Brixton Fire Brigade plus a return against the SLP, please get in touch with team manager, Captain Bob Colenutt, tour manager George Nicholson or any of the other managers who make up the team.

### THANKYOU THANKYOU THANKYOU

BLACKFRIARS PEABODY TENANTS ASSOCIATION would like to thank all the people below for their kind contributions to our silver Jubilee celebrations. A big thank you from all our senior citizens and children who had a wonderful day. Lestrat, Waterloo Road, William Hills, Blackfriars Rd, Rolls Switches, Blackfriars Rd, Whitco's, Blackfriars Rd,

Kings Head Pub, Blackfriars Rd; The Crown Pub, Blackfriars Rd; Charles Holiday, Valentine Pl; Sainsbury's, Stamford St; Grapevine Wholesale Ltd; Peak Freans, Bermondsey; Halfway House pub, Gray St.

### STOP PRESS.

Another win for the strollers! this time the team the Dregs of Humanity who lost by 12 runs. Strollers 128 in 30 overs

## Where are they now?

Residents of Union Street and Hepper Street flats enjoying a party on VE Day 1945. Were you there? Can you recognise anyone there? Let us know what you can remember.



## SCENTS OF SOUTHWARK WHATS BREWING AT JAMES ASHBY'S!

A new scent has recently been teasing the nostrils of residents and our S.E.1 reporter has tracked it down to James Ashby & Son, tea and coffee merchants who have their premises at 195-205 Union St.

The new aroma which no doubt will have reminded residents of something or other is in fact a mixture of Barley and Soya beans being roasted up for Ashby's latest product "Coffisub" a coffee substitute which at 5 times cheaper than coffee looks as if it is here to stay, in fact with sales increasing at 100% a month it looks like coffee could go out of style.

One way or another scent has a major part to play in Ashby's business, as apart from the coffee side their other major activity is scented teas, with Royal Rose, Lemon Tea, Jasmine Tea, Spiced Tea, Earl Grey, Orange Scented Blackcurrant and Lime scented Teas all being produced in their Union Street plant.

### Quaker Tradition

Like many other familiar names in the food business such as Trumans, Rountree and Cadbury, Ashby's stem from a Quaker tradition. The reason for this is that Quakers were barred from entering the "professions" such as the Church, the Army, the Colonial service and the Legal profession, and therefore established their reputations through the "trades".

Several major events have affected the path that Ashby's business has taken since the present chairman, 85 year old Charles Ashby's father started the business in 1855. The bulk of the business up to 1950 was as importers and dealers in tea and coffee, distributing these to merchants all over the country who did their own tea blending and coffee grinding. This all changed in 1951 when there was a slump in tea prices which sent many merchants

bankrupt. Ashby's were left with a lot of tea on their hands and found a way out of the crisis by blending the tea and cutting their losses.

Like all twists of fate luck plays a part, and in this case luck came in the form of the Chinese revolution in 1947 while the future of 400 million Chinese was being decided the battle for the world's scented tea market began, as during the revolution the secrets of how the exotic peach and pine scented teas which used to be exported from China were lost. Whilst the market for Chinese scented teas had been a fairly small one Ashby's felt that there were possibilities for experiment with the idea and started by scenting some Indian tea with Bulgarian rose petals. The idea was given



Mr McEvoy and Mr Wood TASTING THE TEA FOR BLENDING

a further boost when a shipload of tea arrived from Ceylon in a ship that had been carrying oranges previously. The orange flavour had permeated the tea, and no-one on the tea market would buy it until Ashby's - thinking there might be possibilities with their scented tea market - bought it and eventually added the orange-scented tea to their range of exotic teas, with others like peach-scented following later.

London has now lost its place as the centre of tea and coffee broking. As tea-producing countries became independent, they have opened up their own markets. Obviously as more and more people became involved in tea production, prices were sooner or later going to be affected - although Mr. Payne, Ashby's procurement manager, feels that the recent tea price increases have more to do with more people becoming interested in tea as a drink than as a commodity. After 13 years of stable prices it is difficult to believe anything when prices increase threefold in a year. How much is due to more Indians drinking tea or fewer Americans drinking coffee is hard to tell but with tea prices going up - and Mr. Payne thinking that the long-term trend will be upwards - it will be only a matter of time before "Tea-sub" joins "coffee-sub" on the supermarket shelves.

Brooke Bond, Lyons and Typhoo monopolise the market dealing with the large supermarket chains which sell tea as "loss leaders". This loss leader mentality by the chains does not extend to them making too much of a loss, however, and the way the costs are kept down is to use poorer and poorer quality teas. The absurd situation where the public is trapped between supermarkets desperate to attract customers through loss leaders, and advertisers desperately trying with more and more expensive packaging to persuade people to buy poorer and poorer tea will eventually mean we all lose out. Meanwhile most of the best tea is being sold to Russia.

### Blend of 20 teas

Between arriving in a tea chest in Union Street and leaving in various packets, a lot happens. In fact Mr. Payne feels that people do not appreciate the amount of work that goes into tea. A packet of 'divi' may seem ordinary enough, but to get a consistent flavour, many teas are blended together.

Samples are sent from the tea markets of Nairobi, Calcutta or Colombo to merchants like Ashby's, who brew up the sample to see if they will be making a bid at the auctions. After having brought the tea, it will then be shipped to this country and blended with other teas. Some teas you buy in the shops are a blend of 20 different types - which gives some indication of the work which goes into our 'cuppa'.

Next month: how it all works in the Union Street building.



JAMES ASHBY, FOUNDER OF THE FIRM, IN THE OLD CITY OFFICE.

## Support Your Local Shop

OPEN UNTIL 8pm MONDAY-FRIDAY,  
7pm SATURDAY,  
1pm SUNDAY.

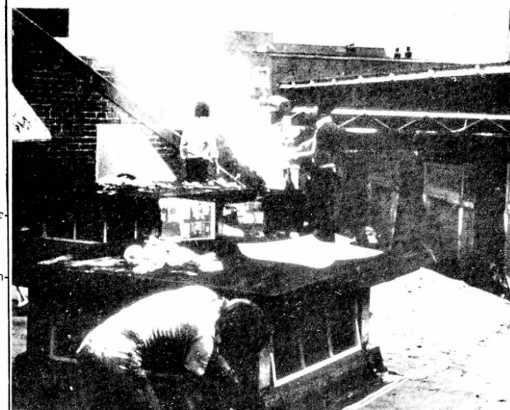
- fresh milk daily
- frozen foods
- all groceries & provisions

- newspapers
- confectionists & Juacconists
- hot snacks, rolls and sandwiches to take away

Green Shield Stamps on all items. Double Stamps Saturdays.

THOS. E. DAVIES & CO (TOMS)

137 Southwark Bridge Road, SE1



Members of the job creation team and employees of Brooks and Sons Ltd working on the roof of the Colombo St Sports & Community Centre.

## Colombo Street Sports Centre : Everyone not playing ball

Activities at the new Colombo Street Sports and Community Centre are gradually getting off the ground, not thanks to local authorities but to local effort. Being on the boundary of both Southwark and Lambeth, neither of these councils will take responsibility for funding the project. However, the management of the Centre, which is made up of local people, feel that the funding should be shared by both. The Centre itself does and will serve residents and workers of both boroughs. This has not deterred the group from applying (begging if you like) to other bodies, viz local firms and charities.

Because Sainsbury's one-yearly renewable lease, public bodies such as the Sports Council have twice turned down applications.

Because of the problem of the length of lease of the building, which is owned by J. Sainsbury Ltd, is a one-yearly renewable let, public funding bodies such as the Sports Council of Great Britain have twice turned down funding applications, for they stress that there should be a minimum of 7 years regarding the lease.

So the group is falling in between a lot of inflexible rules and red tape. But this has not stopped the group from doing their own thing. A lot of work has been done in the Centre by local residents and with the great assistance we have had from Lambeth's Job Creation Team. The Job Creation Team is a part of the Manpower Services Commission who give employment to school-leavers of both sexes, who in these troubled times of unemployment find it very difficult to find a job and learn a trade. All the kids are on special government pay and carry out work under supervision such as building and decorating, etc. All they need is the material and equipment to get on with the job. Colombo Street Centre has already taken advantage of this scheme, with the donation of £400 worth of paint given by F. Woolworths Ltd, and the Team has already begun painting the Centre.

### Local firms support

However the Centre has been receiving good support from local firms and organisations and the Committee has been successful in raising funds from local charities. One of the priorities has been getting the roof repaired and original estimates were £2,500 for the work submitted by the well-known West End firm R. Brooks and Son. When they were approached again explaining that we could use the Job Creation Team they kindly offered to employ two of their best workers to teach the kids the skills of preparing and repairing the roof at a new figure of £550. We gladly accepted their generous offer, and then through our local Neighbourhood Council, the

Association of Waterloo Groups, of which the Centre is a member, an application was made for £800 to do the roofing work and purchase bricks to build internal dividing walls. This application was successful when it was discussed at the Lambeth Council Committee meeting on Tuesday 14th June where all the councillors showed a sincere interest in the venture - not least because common sense told everyone that it was a great saving of public funds.

### £2,000 boxing ring

Apart from this funding, various local firms and charities have been approached and some have responded very well. UAC International, which is just around the corner from the Centre in Blackfriars Road, have most generously donated a brand new boxing ring which must be worth in the region of £2000. Other local firms who have shown interest are IPC, Shell and Finance for Industry, and we hope to hear some good news from them shortly.

Two local charities are also giving financial support for the Centre. We have just heard that the Elizabeth Neucumen Educational Trust is giving the Centre £250. Prior to this the Christchurch United Charities donated £250 which is going to be used by the pensioners group who have already organised Old Time Dancing Lessons at the Centre and have several other activities they want to get started there. One such activity which both the pensioners and the other groups involved want to see developed is the extension of courses such as those held at Morley College. The Committee of the Centre has approached Morley and Southwark Colleges about sponsoring courses at Colombo Street and now that they have been successful in obtaining additional finance from the ILFA for this type of activity this idea will be acted upon shortly.

### More funds needed

Although there have been several successes in raising money there is still much that remains to be done at the Centre. Two of the most important are to get a heating system installed in the building and to employ at least one permanent worker to help administer the Centre.

John Hearn, Chairperson of the Colombo Street Sports and Community Centre's Management Committee, stated that he was really peeved at how the council look at project such as theirs. "I sit on the working party with the two authorities and I hear them talking about 7 million pounds for the new leisure centre at Brixton and 1½ million pounds for the new sports centre at the Elephant all these are figures in long distance telephone numbers. They do not look at the savings we have already made in virtually securing a purpose-built building for peanuts. And all we are asking for is a small amount of cash - a local call - to complete the conversion."

# WHAT'S ON



**Lambeth Mission**, 1-5 Lambeth Road SE1  
1st-5th, 8th-12th August 10am-12 noon, 2-4pm  
**North Lambeth Churches Children's Holiday Course**

Activities include arts and crafts, cooking, games, swimming, outings  
Ages 7-14  
Admission 10p  
Further details from Rev S Maslen at the Mission  
01-735 2166/4902

**Cottingham Young Peoples' Association**, Cotton Garden Children's Centre, Cotton Gardens, Kennington Lane SE11  
2nd-26th August  
Tuesday-Friday 10am-12 noon, 1.30-4pm  
Activities include outings, sports, handicrafts, drama  
Ages 5-12  
Admission 50p per week  
Further details from Mrs J MacDonald  
20 Ariel Court, Kennington Lane SE11  
01-582 0087

**Oval House Summer Playscheme**  
1st-26th August 2-4.30pm  
Drama at various sites  
Ages 6-15  
Further details from Ms R Price  
c/o Oval House, 52-54 Kennington Oval SE11  
01-735 2786

**Pea Place Club**, Waterloo Action Centre, Bayliss Road SE1  
Saturday 1-5pm, alternate Wednesdays  
6.30-8.30pm  
Further details from Mr MJ Ashtor-Phillips  
289 Brompton Road SW3 2DY

**Ethelred Tenants Association**, Pory Hall, Lambeth Walk SE11  
2nd-4th, 9th-11th, 16th-18th, 23rd-25th August 10am-12.30pm, 1.30-3.30pm  
Project includes arts and crafts, sports, cooking, swimming, films, outings  
Ages under 12s  
Admission 5p per day  
Further details from Mrs Bibby  
73 Gibson Road SE11

**WATERLOO ADVENTURE PLAYGROUND SUMMER PLAYScheme**

PLANS FOR A FULL PROGRAMME of events are now in hand. As usual, details will be available from the Action Centre nearer the holidays.

**Dates:** Starting date Tuesday 26th July; closing date Saturday 27th August. During this period the Playground will continue to open at weekends and close on Mondays

**Times:** Tuesday-Friday 11.00 am-8.30 pm; Saturdays and Sundays, 11.00 am-6.00 pm

**Regular events to include:** inflatables, sailing and canoeing, arts and crafts, camping weekends, beachcombing, "water splash" at Taledonian baths, table tennis league

**Outings:** Heathrow, Black Park, Lambeth Fire Station, HMS Belfast, Roehampton, London Docks, RAF Museum, Woburn Safari, Cutty Sark, Epping Forest, Madame Tussauds

**Coach trips:** Broadstairs, Camber Sands

**Opening and closing parties with live music**

There are other summer playschemes too - look out for notices in shops, etc in your area

## Lambeth Festival of Sport

**\*Brockwell Park**, Herne Hill SE24  
12th August 2-7pm, 14th August 12 noon-7pm  
Two days of sports competitions and displays, including free fall parachute displays, showjumping, gymnastics, motor cycle display team, wrestling, martial arts, basketball, family fit, trampolining, children's and family sports  
Admission free  
Further details from Pat Quay  
Lambeth Amenity Services  
01-761 0901/1931

## Entertainments

**\*Children's events - GLC**  
**Archbishop's Park SE1**  
27th July 3pm, Doreen Travis  
3rd August 3pm, Prof Crump  
10th August 3pm, Mr Chris  
17th August 3pm, Cap and Bells Puppets  
24th August 3pm, Frog Puppets  
26th August 3pm, Puppet Theatre  
31st August 3pm, Clown Cavalcade  
2nd September 12 noon-5.30pm (inflatables)

**\*Kennington Park SE11**  
3.5pm  
31st July, Crystal Palace Band  
7th August, Stevenage Band  
14th August, West End Stompers  
21st August, Tottenham Military Band  
28th August, Paddington Military Band

**Imperial War Museum**, Lambeth Road SE1 6HZ  
01-735 8922

Open weekdays 10am-5.30pm, Sunday 2-5.30pm  
**Women at War 1914-1918**  
Ages 10+  
Admission 30p, under 16s 20p

## Films

**Imperial War Museum**, Lambeth Road SE1 6HZ  
01-735 8922  
27th July, 3rd, 10th, 17th, 24th, 31st August  
11-11.45am  
**First and Second World War Cartoon Films**  
Ages 8+  
Admission free

**National Film Theatre**, South Bank  
Waterloo SE1 8XT  
01-928 3842

23rd, 24th July 4pm  
**Just William's Luck (U)**

30th, 31st July 4pm  
**Benji (U)**

6th August 4pm, 7th August 3.30pm  
**Cost Jester (U)** starring Danny Kaye

13th, 14th August 4pm  
**The Holy Terror (U)** concerns a small boy who gets lost on a train and spends the night creating havoc amongst station staff

English subtitles  
Ages 7+  
20th, 21st August 4pm  
**The seventh voyage of Sinbad (A)**

27th, 28th August 4pm  
**Three men in a boat (U)** starring Jimmy Edwards, Lawrence Harvey and David Tomlinson

Ages 11+  
3rd, 4th September 4pm  
**The Great Adventure (U)** the story of two small boys who capture and tame an otter

Ages 11+  
and **Wild Stallion (U)** set in the Camargue region of Southern France and dealing with a boy's adventures with a wild horse

Ages 11+  
Annual membership of the NFT £4.00, monthly membership £1.10. Price of seats for all Junior Programmes 50p

**BLACKFRIARS GINGERBREAD**

Starting 5th September there will be a new gingerbread group for the Blackfriars (SE1) area. Full details in September Issue

## SOUTHWARK STREET THEATRE

Captain Berma and the Mondsey Band will be visiting estates in Southwark from 25th July to 12th August.

**Children!** If you hear them calling round your estate, get your friends and join them. Look to see when they're in your area.

**Mondays:** Elm Estate, Weston St.  
**Tuesdays:** Betsam an Northfleet houses.

**Wednesdays:** Kipling Estate, Long Lane.

**Thursdays:** Douglas Buildings, Marshalsea Road.

**Fridays:** Strood House, Staple Street.

Come along and join the fun! 10am-12 and 2pm-4pm.

## DOWN THE RIVER

Why not go down the river this summer? You can do beachcombing, treasure hunting, making sand-castles in front of the Royal Festival Hall.

You can have two hours either side of low tide:

**Low tides in August**

Mon 1st 10.32	Tues 2nd 11.11
Wed 3rd 11.44	Thur 4th 12.12
Fri 5th 12.39	
Mon 8th 14.40	Tues 9th 15.58
Mon 15th 9.23	Tues 16th 10.07
Wed 17th 10.46	Thur 18th 11.25
Fri 19th 11.49	
Mon 22nd 13.22	Tues 23rd 14.22
Wed 24th 15.51	Thur 25th 17.34
Mon 29th 9.30	Tues 30th 10.11
Wed 31st 10.48	

## Cricket Matches

**Surrey County Cricket Club**, Kennington Oval SE11 5SS  
01-735 2424

27th-29th July 11am-6.30pm first two days, 11am-5.30pm or 6pm third day  
**Surrey v Kent**

30th July, 1st, 2nd August 11am-6.30pm first two days, 11am-5.30pm or 6pm third day  
**Surrey v Northamptonshire**

31st July 11.30am-6.30pm  
**PI Pocock Benefit**

13th, 15th, 16th August 11am-6.30pm first two days, 11am-5.30pm or 6pm third day  
**Surrey v Lancashire**

14th August 2pm start  
**Surrey v Lancashire - a John Player League Match**

(40 overs a side)  
25th-27th, 29th, 30th August 11.30am-6.30pm first four days, 11am-5.30pm or 6pm fifth day  
**England v Australia - Test Match**

Ages 7+  
4th September 2pm start  
**Surrey v Nottinghamshire - a John Player League Match**

(40 overs a side)  
Details of admission, prices and Club membership from the Club

## Add-Life Motors

**Accident Repair & Renovation Specialists**  
Panel Beating    Convolving  
Re-Cellulosing    Sun/Vinyl Roofs

**Insurance Estimates**  
Head Office: 6 Burrell St. SE1  
01-633 0557 (Day)  
— 113 Wootton St. SE1  
01-834 1429 (Evening)



## SCHOOL'S OUT BUT BENEFITS ARE IN

SCHOOL HOLIDAYS ARE with us again and now is the time to think about the education benefits that you may well be entitled to claim for your child.

It all depends on how much your net income is, that is the amount you have left after taking into account things like tax, expenses connected with work, special diets, maternity grant. The thing to remember is that the income limit for these benefits is soon going to be raised, as Jim Callaghan announced a couple of weeks ago. This means that more people will be able to claim. If you're not sure if you are entitled to benefit, apply anyway. You've nothing to lose and you may get what is yours by right.

**What are the benefits?**

- 1) **Free school meals.**  
If you get supplementary benefit or FIS (family income supplement) your children will automatically get free meals if you apply for them. Otherwise it will depend on your net income.
- 2) **School uniform and clothing.**  
If your children need any sort of uniform for school you may be entitled to a grant for this. You may also be able to get a grant for clothes that your kids wear out of school (officially known as a 'necessitous clothing grant'). If you get supplementary benefit there may be some dispute between the education office and the social security office about who should give grants. It's best to apply to the education office and the Social Security office about who should give the grants.

Apply to the education office first. If the amount they award you is not enough, try the social security office. Social security very rarely give grants for school uniform, but they often give grants for clothes worn out of school.

- 3) **Educational Maintenance Allowance.**  
You can claim an allowance if your child stays on at school after they could have left. That means from the first Easter after they are 16. If your child leaves school to go to a Technical College full time he might also be entitled to an allowance.

REMEMBER - if in doubt APPLY. You can get application forms from your child's school or the Education Office. For Southwark that's ILEA, 2 Camden Sq., SE15 (tel 703 0855) or 68 b Old Kent Road between 9.0 and 4.30 on Mondays only. For Lambeth it's ILEA, 50 Acree Lane SW2 (274 6288).

Alternatively try the local Social Security office at Wedge House, 36 Blackfriars Rd.

"What can I do with six pairs of used spectacles?" "How do I go about changing my G.P.?" Questions like these have been asked by visitors to the Community Health Council shop in Lambeth Walk.

The annual report of the St. Thomas' District Community Health Council is a mine of useful information about its activities. CHC's were set up in every district when the health service was reorganised in April 74. Their job is to represent the community's interests in the health service. The shopfront has been a big boost in helping people get the best out of the NHS.

Mental health and the mentally handicapped are of great concern to the CHC. Mentally handicapped children they say, are not ill and needing treatment, they need proper care, education and training. They should be cared for at home or in small local residential units. There are patients at Tooting Bec Hospital who could be discharged to be cared for in the community if the services in the community existed.

## Lambeth Hospital

The shortage of chemists in SE1 is still crippling local residents. One chemist opened in the King's Reach development in Stamford Street. The CHC thinks chemists should be taken over by the National Health Service where necessary, to make sure that areas in need, like Waterloo and Southwark get them.

In the forefront of the campaign to turn the old Lambeth Hospital into a community hospital, the CHC have put forward a plan to the Area Health Authority for the whole of the Hospital site to be used for the community. As well as a community Hospital, they want housing for local people and sheltered housing for old people.

## What are Community Health Councils?

Community health councils (CHCs) were set up in every district when the health service was reorganised in April 1974. Their job is to represent the community's interests in the health service.

Their members are unpaid. Half of them are appointed by the Borough Council (though not all of these are councillors); one-third by voluntary organisations; and the remainder by the Regional Health Authority. They have a full-time paid secretary and assistant.

The CHCs concern on plans for the development of services in their district (eg on services for mentally handicapped children) and they must be consulted on plans for the closure or transfer of hospitals (eg the Lambeth). If they agree to a closure then the health authorities can go ahead; if they disagree the CHC must submit alternative plans and if there is still disagreement, the two sets of plans go to the Secretary of State for Health and Social Services for arbitration. CHCs can make suggestions for improvements in services (as we have done on the shortage of chemists' shops) and they help people who want to make a complaint about a service.

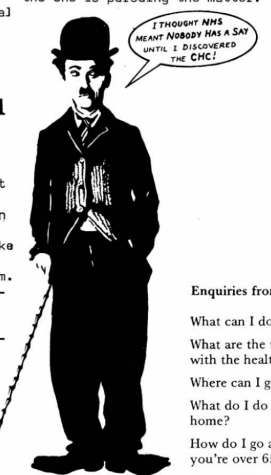
CHCs have a wide network of contacts, both locally and nationally. They can come without fear or favour. We have working groups to discuss specific topics and hold full council meetings in public.

If you have any suggestions or complaints to make about the health service, contact the member of the CHC who lives nearest to you OR the Secretary, Sue Thorne, at 2 Cleaver Street, SE11 (582 3288/3289), OR join one of our working groups, OR come to a full CHC meeting. These are held at the CHC shop at 7.00 pm. The dates for 1977 are: 21 June, 12 July, 6 September, 4 October, 8 November and 6 December.

## Healthy future for SE1 Activities of St Thomas' Community Health Council - and new community health worker plans

More people are going to the Community Health Council for help with complaints about the NHS, especially over hospital services. One old lady waited 5 hours in out-patients without being seen and another spent 12 hours at the hospital waiting to be seen and then waiting for transport.

After a lady complained that she had been charged by a dentist as a private patient when she thought she was being treated as an NHS patient, the CHC discovered that, by law, it was her own fault. It's the patient's responsibility to establish whether it is private or NHS treatment. Questions were asked in Parliament and the CHC is pursuing the matter.



## Health worker

JANE MILLER, the new Community Health Worker for Waterloo, writes about her plans:

My aim is to de-mystify medicine and encourage people to take a more active part in their own health care. I'm based at the Waterloo Action Centre in Baylis Road. There are now a large number of leaflets about health, available free, at the Action Centre. Many of you might have noticed the displays on epilepsy and anti-smoking which were on show in the Action Centre window a few weeks ago.

If you have any ideas for future exhibitions on health issues or if you have any queries or comments on health facilities in the local area I would be glad to hear from you.

Enquiries from callers at the shop: How Many Can You Answer?

- What can I do with six pairs of used spectacles?
- What are the terms of general practitioners' contracts with the health service?
- Where can I get boards for a slipped disc?
- What do I do about getting a GP when I'm away from home?
- How do I go about changing my GP? ("You can't if you're over 65, can you?")
- What should I do about this wrist? - it isn't right.
- Can I have information on the CHC for our parent-teachers' association?
- Why wasn't the CHC mentioned in this newspaper article on complaints and the NHS?
- Where can I get psycho-sexual counselling?
- How can I get help for my elderly father at home?
- Do you know if there is a heated swimming pool which arthritics can use?
- Are spectacles free for people aged 80 and over?
- What are the opportunities for a hospital nurse to nurse in the community?

## Chemists campaign aired

AT LAST The efforts of the Closure of Chemists Campaign Group are paying dividends and their voices are being heard by those who are in a position to solve the problem. On Wednesday 10th August at 9.35 a.m. a programme about the shortage of chemists shops will be heard nationwide on Radio 4. The BBC approached the local group, after going around the nation looking into the chemist issue. Besides local residents being heard and some of these are pensioners, two MPs, members of Age Concern and the Pharmaceutical Society will discuss the problem.

The group tried to have a say in the signature tune for the programme but the producer had already decided on one. The group's choice was "Boots are made for walking".

I'll be starting a women's discussion group on the Tanswell Estate in September, so school age (the kids will be looked after in the 'Barga' at the same time) who are interested to find out more about it are welcome to see me at the Action Centre.

I am also hoping to get a discussion group of people suffering from things like arthritis, bronchitis, rheumatism to talk about how it affects their lives and ways of coping with it.

Eventually it is hoped to get an information network going where we can put people in touch with each other if they've had certain illnesses or operations. For example, if someone is uncertain about having a breast operation and would like to hear what it involves, she can go and chat to someone who has had one and is willing to talk to her about it.

Come and see me at the Waterloo Action Centre. And if I'm not there, you can leave a message for me! PS. Did you know that there is a family planning clinic on the Tanswell Estate!

It is the Barley Mow Clinic, Frazier St, open on Mondays between 9.30-11.30am and 5.45-7.45pm and on Thursdays 5.45-7.45pm. Free advice and supplies of contraceptives are available. Just walk in or make an appointment by ringing 674 3502.



## Summer Health Events for Kids

AT THE  
**Community Health Council**  
2-4 Cleaver Street, Kennington  
(582 3238)

Tuesday, August 9th and 23rd  
Thursday, August 11th and 25th  
at 10.30 - 12.00am  
& 2.00 - 4.00pm

ALL AGES WELCOME.  
BE PREPARED TO HELP IF YOU ARE OVER 12 YEARS OLD



# Pensioners still see red



ONCE AGAIN THE local pensioners' groups are taking up a complaint received by local residents over the pelican crossing at the junction of The Cut and Waterloo Road.

Armed with stopwatches, senior citizens have been timing the 'green man' which tells pedestrians when it is safe to cross the road. They discovered that you get 12 seconds to cross from The Cut side of Waterloo Road to the island, but only 6 to 7 seconds to cross from the island to the Lower Marsh side.

Now 6/7 seconds is not long enough to allow elderly people and invalids to cross. The 12

seconds on The Cut side is long enough because the flow of traffic is one way, but the Lower Marsh side has 2 hazards: the traffic from Lower Marsh that turns left onto Waterloo Road and the traffic that turns right from The Cut. Both traffic streams usually go over onto the amber part of the lights and cut down even 6/7 seconds.

With these additional ha adds the pensioners feel that they are justified in bringing this complaint. They say that 6/7 seconds may be alright for young people and greyhounds but older people need a little longer.

## Grunwick's in SE1

IF YOU WANT TO HELP the Grunwick strikers, but can't get over to Willesden by seven in the morning to picket the factory gates, there are other ways of helping - and one of them is right on our doorstep.

Vic Odden's, at London Bridge Station, still deal in Trucolor Monokolor, and other Grunwick film. Pictured above are members of Southwark Trades Council, who picketed Vic Odden's all last week from 12 - 2pm, to persuade people not to use the photographic services there, and persuade Vic Odden's to use a different processing firm. As far as we know, Odden's are still trading with the Ward outfit, so you can help the Grunwick strikers by picketing there.

You can also help by asking any other film shop which processor they deal with, and if they are persisting in dealing with Grunwick you could organise a picket there with your friends or the members of your tenants association, your trade union branch or community group.

You can also help by sending a donation to the Strike Committee, c/o Brent Trades Hall, Willesden, NW10, and by bringing the question up in any organisation you are a member of, to get it also to send its support and donation.

And even if you can't get up there to Willesden normally, the mass picket called for AUGUST 8TH is particularly important.

## Brunswick Court latest

SOUTHWARK COUNCIL have taken a decision at the last Planning and Development committee to buy the street for £50,000 but are now having second thoughts.

They have decided that before the Council will buy the street they will survey all the residents to see if they want to stay in the street or leave. If it turns out that the majority of the residents want to stay in the street then Southwark will not buy it.

If this happens, pressure will have to be put on the City Corporation to get them to bring the 32 houses up to standard. Although why Southwark won't do this remains a mystery.

## Matters Arising....

TABARD STREET: Two shopkeepers are faced with eviction by the owners of the building who want to redevelop for offices. They are to fight the eviction in the County Court.

UNION STREET: Southwark's Planning Committee are to consider an application to build an office on the site of the Hayward's building. A report on Union Street just published by North Southwark CDG shows the effect of speculation on the loss of industry in Union St., and argues that if this application is allowed it could threaten other industrial buildings.

QUINN BUILDINGS, Waterloo Road: Work has started on 63 new GLC flats.

LONDON ROAD: It is rumoured that the giant office scheme which would have flattened the shops and housing on the west side of London Road has been revived after faltering last year when the potential occupiers dropped out.

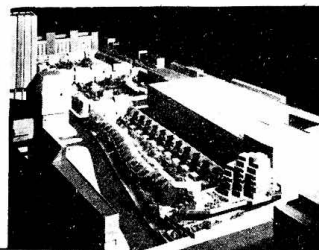
ROCKINGHAM ESTATE: Last minute attempts are being made by tenants to prevent housing being built on what is known as the Meadow Row site, which they want to see used for open space - the last thing they want on Rockingham is more housing.

BAD NEWS: According to a recent estate agents' report, more office space was let in SE1 than in any other part of Central London, including the City, during June.

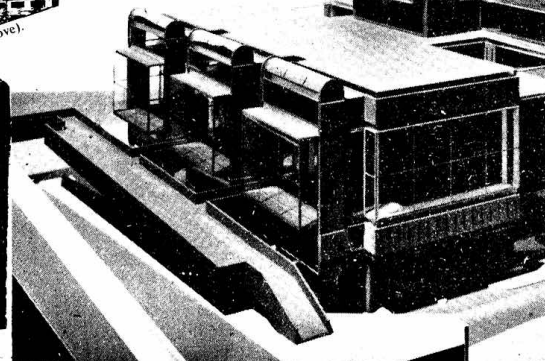
**TORIES WRECK SOUTH BANK HOUSING FOR HOTEL** continued from page one.

This hotel was planned more than 7 years ago and was passed before local people had really got organised to oppose it. It fell foul of the hotel slump of the last three years when it seemed there were too many hotels in London. But now with the tourist boom, hotels are becoming profitable again. Heron director, Harry Dobin, said recently when asked about his latest scheme, "With the change of control at the GLC we thought we would get the plans out again and dust them down. Hotels are having a boom at the moment and one doesn't know whether it will be sustained or just a flash in the pan."

Or maybe just another half-finished hotel?



ABOVE is the whole Coin St site with the proposed hotel site in the foreground. RIGHT is the hotel.



## Driver Wanted

INTERESTED IN HELPING IN THE COMMUNITY?

Blackfriars Settlement is looking for another worker to do essential driving (youth club minibus and ambulance), odd jobs, and who would involve him/herself in the welfare rights project. The job offers an unusual opportunity to gain experience in rights and/or neighbourhood work.

The person appointed to this post will not be expected to have recognised experience in community or social work, and the appointment will be made regardless of professional status or qualifications. Priority will be given to candidates who have links with the immediate neighbourhood.

Salary: £3,240 min + dependants allowances. 40 hour week. For job description and application form contact Deirdre Alsey, Blackfriars Settlement, 44 Nelson Sq. SE1. Tel: 928 9521.