

"HANDS OFF, HERBERT"

SAY THE RESIDENTS OF WATERLOO

AS THE GLC FLOUTED FOUR YEARS OF LOCAL CONSULTATION OVER THE FUTURE OF THE SOUTH BANK BY THROWING OUT ALREADY-AGREED PLANS for family housing in favour of massive office and hotel schemes, Herbert Sandford, Tory Chairperson of the GLC Central Area Planning Board, said 'Local opinion has not been ignored: it's just that we cannot accept it'.

In an attempt to prevent local people winning their fight for family housing with gardens on Coin Street, the Tory GLC has overturned its previous planning principles and zoned the whole of the South Bank for office development. At the same time it has formally cancelled the previous Labour GLC's plans for low-rise family houses on Coin St. and given the go-ahead for the Heron Corporation plans for a skyscraper hotel, a massive office complex including a headquarters for Texaco Oil, and small luxury flats.

But just as the GLC Tories were reporting this news to their friends in Heron, Lambeth Council formally passed a compulsory purchase order on the sites, and local residents launched a national campaign to stop inner city communities being destroyed by office developers.

Local residents overflowed the public galleries at County Hall and loudspeakers had to be set up to relay the GLC debate on March 8th. Over 20 local community groups had sent letters objecting to the proposals to rezone the South Bank for office development. They pointed out that the GLC had spent a year

on public consultation before drawing up the original planning principles (i.e. "low rise family housing should be provided where a satisfactory environment can be achieved and... where the GLC owns vacant land only residential use should be allowed.")

Despite this, neither local groups nor Lambeth Council were informed that the GLC were going to overturn these principles--let alone consulted about their views.

Not Good Enough

Labour Planning spokesperson Andrew McIntosh said he was right behind local people. He pointed out that the Tories were refusing to build decent homes with gardens in central London because they claimed it was 'too expensive', but at the same time they were refusing to build in Outer London where land was cheaper, and they were selling off the low-rise homes which the GLC already owned. The Tories were in effect saying that GLC tenants in Inner London were not good enough to be decently housed.

He pointed out that there was no need for a hotel on the South Bank and that only a week before the GLC had agreed for 106,000 square foot of the empty Melia



Duckley hotel at Kings Reach just down the road to be turned into offices.

Tory Planning Leader Shelagh Roberts said that the office development would mean £2 million in rates for Lambeth. An Evening Standard editorial two days later commented "If rateable value was the only criterion, as Shelagh Roberts of the GLC Planning Committee seems to believe, then the whole of the South Bank and much else besides would be covered in office blocks, shopping precincts and snackeramas... To concrete the South Bank over and make it empty after dark and weekends would be a tragedy. It would mean missing the best chance to civilise London since the Great Fire. And if that happened, it might turn out that many of the office blocks and hotels were empty anyway--which would be bad for the rateable value too... The GLC Planning and Communications Committee should think again--as they may have to anyway if there is a public in quiry."

Priority

Lambeth Council for whom Shelagh Roberts is so eager to provide rates has made it clear that its first priority is to ensure that the South Bank is used for family housing and open space in accordance with the Waterloo District Plan.

On March 15th it passed a
CONT. ON PAGE 3

MAYORS .. CELEBRITIES .. LOCAL BUSINESS MEN .. EVEN A MINISTER FOR SPORT .. THEY WERE ALL THERE FOR THE

GALA OPENING

FOR SPORTS CENTRE

GALA NIGHT CAME TO THE COLOMBO STREET SPORTS AND COMMUNITY CENTRE on March 2nd.

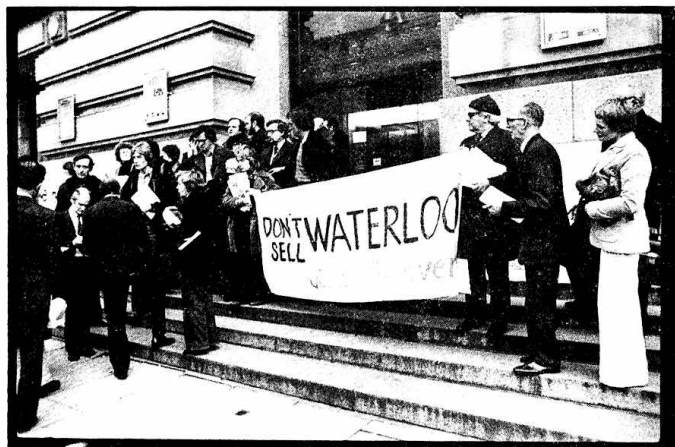
Bright new blue and yellow paint decorated the walls, fierce lights of the film crew lit up every corner of the main hall and a large industrial heater roared away in one corner. The celebrities and the public gathered along the walls, sipping sherry, drinking tea, chatting with friends and waiting for Mr. Denis Howell, Minister of Sport, to give the Centre an official launching.

The local community has been using the centre for over a year, and to prove it displays of some of the activities were presented: Shorinji kempo, karate, boxing and badminton. A film crew from the Government's Central Office of Information flitted from one scene to another, recording community activity and racial harmony for a film to combat the National Front.

Suited businessmen from firms who have donated money to the Centre came to see the fruits of their cash. The mayors of Lambeth and Southwark, feeling important in their chains of office, moved from event to event with the confidence of people who have had much practice of Gala Nights. They even upstaged Denis Howell by donning boxing gloves, climbing into the magnificent new boxing ring and sparring before the crowds. Was it just an accident that the Mayor of Southwark ended up on his back?

Mr. Howell's official speech was about as memorable as the back of a cornflakes packet but that was really beside the point. What mattered was that he was there together with the representatives of the local councils and local businesses.

At last they have acknowledged that the Colombo Street Centre exists and the people of North Southwark and Waterloo are serious about using it and keeping it going. All that's needed now is the money to equip it and run it--now's the time for all those doubters and non-believers to cough up the cash and let us get on with running the centre.



A PRESS CONFERENCE AT THE STEPS OF COUNTY HALL FOLLOWING STORMY GLC PLANNING MEETING OVER THE COIN STREET SITE

Golden Oldy

A hop back in time

WHO REMEMBERS THE HOP EXCHANGE FIRE, WHICH BURNED FOR 4 days and nights, and took the firemen a week to clear up. It was said to have been started by a spark from a passing railway engine igniting a hopsack, and the fire gradually went along the street to the Exchange Building.

The following week, I with another man was instructed to go there and collect the firm's property from the office we had there. It was a sight I shall not forget. The inside of the building was an open space, and around the inside walls were 3 tiers of balconies, made of grid iron with glass inserts 4"x4"x3". The heat of the fire had melted this glass so that one's immediate thought was of thousands of glass daggers above one's head, and occasionally one would fall to the floor with a crash. However we managed to rescue most of the firm's books and property.

A few weeks after this the firm had bought all of the retrieved and damaged hops, and we set about distilling them, from which we obtained little more than one ounce of tippenless oil which eventually was sold to a brewery for 4000 shillings or £200, which sum was a great amount in those days.

Work as a rep

And now 1921, when I left this employer, being able to drive a motor, and began work driving for a travelling 'rep' for a millinery makers in the City, which increased my wages from £1.2.6 to £1.15.0/wk. I started at 7.30 am and drove until the traveller decided that was enough for him, then I'd drive back to the garage and wash and polish the 'brougham', polish all the brass fittings and carbide lamps, also the plate glass windscreen and windows all round, then clean the inside shelves, shake the carpet, wax polish the lino on the floor, making ready for the next day's 'round' of upper-class West End Milliners.

When I stop to think of those days, the kids of today must have a lord's life by comparison. Everybody in my youth cleaned their boots at least once a day, using the 2d skin of blacking for boots, 2d packet of blacklead to clean the fireplace and fender, 2d of emery paper to polish the fire tongs and other steel fittings around the oven, also the 2d block of brickdust to polish the knives and forks - there was no stainless cutlery in that age.

What does it cost now to decorate the front room? My first attempt at this cost me 11d per roll, bought at Blakey & Morris in the London Road, where also stood the South London Theatre. Mum used to take us 4

boys around about 1910/12 and for a shilling we could buy oranges and peanuts, entrance fee for the theatre and still have 2d in pocket. That's when one could hear another say 3d on the 'bumper' meaning a tram ride 3 stages which now costs 30 times as much.

One could pop up the Borough to Sigs Bacon Shop: 20 eggs for 1/-, a hock of oak smoked bacon 4-42d a pound, how about Old Bob's up the Cut, for 63d a choice of roast beef, lamb, port, 2 veg, yorkshire pudding, choice of 2 or 3 sweets, and a cup of tea, plus a cheerful greeting and a thanks sir; maybe you would like fagot 2-11d and 3d of peas pudding or a savoy 3 times as big as today's sausages.

My wife and I could go shopping down East Street and chew a half a cow heel, sprinkled with pepper and sprayed with vinegar for 11d.

In those days women would start a linen club; each week all would pay 6 pence each and a draw would be made for the week's numbers, and on each week number when your turn came you would be given a voucher to spend at a drapers shop. This could be used to replace linen and towels, etc, or a voucher could be accepted at Isaac Waltons at the Elephant & Castle, where I have memories before the Trocadero (Pitcher Place) occupied the site of the World Stores, and before that it was Sandows Cocoa and before that it was occupied by Edwards, who made trimmings for ladies hats and dresses.

London road market

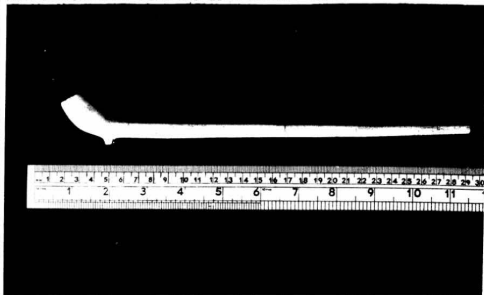
There cannot be many left who recall the market stall in the London Road before the LCC installed the tram lines that caused multiple traffic congestions, owing to the trams jumping off the lines at the turns of the crossroads.

It's a wonderful feeling to be able to forget the 'present' and to remember the past, and then to value one against the other. In the early 1900s a man would earn 18/- a week, now he works 40 hours as against 60 or more for a wage of £60, and on top of that his wife wants equal pay and he is asking for children's allowance to be increased to £3.30/week, when the poor old-age pensioner is being denied the right to have a smoke or an alcoholic drink because he cannot afford the tax inflated price increases that have taken place.

I could go on and on, I think that everything I can think of, used by humans for humans, will show a mean average price rise of between 30/40 times in one man's lifetime. Well, here's to the Present 1978.

Mr Heagren

17th CENTURY CLAY PIPE AND 20th CENTURY RULER



A Whiff of the Past

YOU COULD ORDER A CLAY PIPE AND TOBACCO with your pint if you visited a pub in 17th Century Southwark. The pipe would probably only be used once and a busy pub would get through 200 a night. No surprise then that pipe kilns have been found near Borough High Street by the Southwark and Lambeth Archaeological Excavation Committee.

SLAEC have uncovered two pipe kilns on the site of the old Arcadia Buildings in Tabard Street. The coal fired complex dates from about 1660, and was producing what has since become known as "plague pipes" for the city people. The kilns are the

earliest known discovery of a kiln, although records of pipe-making do go back further. In fact the parish records show that pipes were made in Southwark from 1614 up until about 1880. The clay was imported from Holland or brought up from Dorset.

When the excavations are completed the kilns will be removed and reassembled in the new Museum of London. This will leave the site clear for the real reason for the excavation of the Arcadia Buildings site, that is to find the route of the old Watling Street which ran from London to Canterbury in Roman times.

LETTS HAVE ALL THE FACTS

Three famous Diamonds



John Letts founded the business in the Royal Exchange in 1906 and established the first Commercial Diary in 1912. Since then his generations have actively diversified the business.

Dear Sir,

The mention you gave to this Company on Page 3 of your issue of the 1st March has been brought to my attention.

It is clear to me that you did not take the trouble to check some of the facts given, as a number are inaccurate. Yours faithfully,

for CHARLES LETTS & CO LTD

Anthony A. Letts, Chairman and Managing Director

SE1 REPLIES:

The Chairman of Letts (the diary people) gives nothing away in his letter to SE1. What are the facts that are inaccurate? We contacted Mr Letts and found out that if anything our article was kind to the company. 70 jobs are to be cut by the end of the year, instead of over two years as we had thought. The warehouse section and the offices are to stay in Borough Road for the

time being. All the manufacturing of diaries will be done in Dalkeith in Scotland.

One of those made redundant told SE1, "Mr Letts was only worried because SE1 printed the story before the company told the workforce." She added, "Many of the women working there have been there for many years, some as many as 40. We are choked. We all got on well, it's sad." She said that it was out of the question that any of them would go to Scotland even if they had the chance. "There's not a lot of work around now."

A phone call to Southwark's Industrial Officer revealed that they didn't know that Letts was moving. "They have not been onto us recently, the last thing we knew was they complained last year about parking. They didn't indicate they were going then."

HOW LONG MUST WE WAIT FOR THIS?



"I'M QUITE SURE WE NEED OPEN SPACE IN THAT AREA," said the Chairman of Southwark's Applications Committee when considering a request from Rockingham tenants that Tiverton Flats site should be used for play space for the hard pressed Rockingham Estate.

But in almost the same breath his Committee voted unanimously last week to allow an 11 storey office block and industrial units on the site instead.

Everyone on the Committee was quite sure about the need for more open space around Rockingham and were eager to have a meeting with the GLC to discuss possibilities but when it came to looking at the old Tiverton Flats site as a real life opportunity the planning officer advising the Committee said that it was not a good site for this purpose. "The viaduct is an environmental problem in terms of alternative uses," he said.

Councillor Potter said that he thought the answer to the open space shortage on the Rockingham was to knock down one of the central blocks on the estate, "as they have done at the Dog Kennel Hill Estate." Councillor Watts blamed the GLC: "The GLC must face up to their responsibilities, if the GLC hadn't sold us the land at Meadow Row we wouldn't have built houses there and there would have been an opportunity for open space on that site."

Playworker needed

HAVE YOU GOT SOME E.C.V. FOR THE WATERLOO ADVENTURE PLAYGROUND?

WE ARE LOOKING FOR A FULL-TIME PLAYWORKER WITH:

ENERGY
CREATIVITY
VERSATILITY

PRACTICAL SKILLS WITH BUILDING AND PLAY; DRIVING LICENCE ALSO ESSENTIAL.

IS THIS YOU?

FURTHER DETAILS FROM:

DEIDRE ALSEY - 928 9521.

This is a rather strange argument in view of the storm of protest from the Rockingham Tenants Association about building housing at Meadow Row—a protest that was to no avail.

Now another chance has gone. Once more councillors were wringing their hands over the needs of the area but the decision taken was quite to the contrary. A peculiar way to plan a borough.

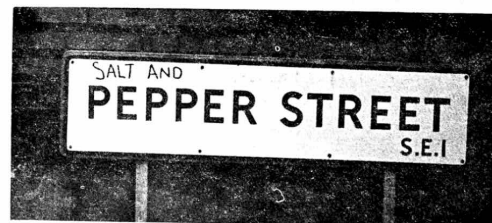
Ann Keane from Rockingham said that she was angry and frustrated by the decision. She is going to see Sir Reg Goodwin, our GLC councillor, to find out why his representations on behalf of Rockingham had no effect on the Committee. In fact, Sir Reg Goodwin's views were never mentioned at the Committee meeting.

Jubilee (Empty) Centre

ANOTHER OFFICE BLOCK TO LET, but no takers. The New Jubilee Centre Office Building which you can see from Bankside across the river in Lower Thames Street.

It was built and developed for a major British Public Company, but this did not materialise, and the building is now up for fresh offers. Only £8.50 per square foot, total 74,650 sq. feet.

Perhaps any future company which is looking for office space should leave our area and go over to the City of London.



NO COMMENT needed on this piece of local wit.

Correction

An SE1 reader/drinker has contacted us about a couple of omissions in our Christmas pub crawl. It seems that when we staggered out of the Fox and Hounds having evaded Bella Nose's clutches, we should have had a chat about the good old days with ex-world welterweight champ Matt Wells over a pint of beer in the pub he ran in Union Street called the Queen's Head, and then gone on to the King Harry's Head, also in Union Street, before rounding the evening off with the Brandy and milks in the Crown in Great Suffolk Street.

We apologise for these omissions, and are already working on a new route which we will reveal at a later date.

BAR FLY

Coin Street

Continued from Page 1. compulsory purchase order on the two car park sites, the Boots warehouse site and Prince's Wharf (on the river next to London Weekend Television). This move will lead to a public inquiry in the summer with the final decision to be taken by the Secretary of State for the Environment.

Meanwhile local residents are taking their own actions. The Association of Waterloo Groups is to write to the local trades councils seeking their support for a 'blackling' of the GLC plans by the building unions. At the same time the North Southwark and Waterloo Community Development Groups are writing to inner city groups throughout the country asking them to a

CAMPBELL BUILDINGS PUBLIC MEETING

Campbell Buildings Tenants Association are planning a 2nd public meeting on April 12th at Morley College. After their last public meeting nearly a year ago, the decision was taken to demolish the flats which have no bathrooms. The estate is due to come down one block at a time starting next year and although a majority of tenants are in favour of this decision, many are worried about where Lambeth Council will move them to and about conditions on the estate during the demolition process.

The Tenants Association have called the meeting to discuss the following points with Lambeth Council officers and councillors:

- * A DEFINITE TIMETABLE FOR DEMOLITION OF THE 5 BLOCKS
- * FULL DETAILS OF WHEN PEOPLE WILL BE MOVED OUT
- * WHAT SORT OF HOUSING IS PLANNED FOR THE SITE

The Tenants Association is also asking for agreement by Lambeth to the following demands:

1. High priority on the transfer list for families still living in Campbell Buildings, many of whom are overcrowded
2. Transfer points to be awarded for lack of basic amenities such as bathrooms
3. First option for present tenants on new flats to be built on the Campbell Buildings site
4. Consultation with tenants over plans for the new flats

The meeting will be attended by Malcolm Noble, Chairman of Lambeth's Housing Committee, various officers from the Housing Department and a planner and an architect who will be able to discuss future plans for the site. Local councillors Peter Lane and Pam Varden will also be attending.

The meeting will be on Wednesday April 12th at 7.30pm in Morley College on Westminster Bridge Road (opposite the filling station).

Matters Arising

DISPATCH MOTORS BUILDING, Southwark Bridge Road, which has been empty for ages is to be used for storage of oil samples. A firm has moved in from Tulsa Hill which will eventually employ 30 people.

meeting in the Waterloo Action Centre on May 13th to discuss how office developers can be stopped from destroying communities and taking land which could otherwise be used for family housing.



OUR FRONT PAGE this month picks out the comment of Mr. Herbert Sandford, Chairman of the GLC's Central Area Planning Board about the views of Waterloo residents (and many others in SE1) over the Coin street site. He says quite simply that he knows what the people want but they can't have it. We are not surprised to hear Mr Sandford say this after all he is a Tory representing the interests of big business (such as the Heron Group

who want to build a giant office and hotel on Coin St.). But it does put public consultation into perspective.

At the end of the day it is up to the people to make their views known and to gain the power and influence to make sure that these views are not dismissed. We cannot expect, unfortunately, that SE1 residents will get their way because of the principle of public consultation.

A Guide to MINT ST. Adventure Playground

THE HUT: We're planning to have a disco in the hut on St. Valentine's Day, with the new disco equipment that we're getting with the money we raised card-singing. We still need another £20 so we're holding a raffle next week. Don't forget to buy your ticket.

The new table-tennis table which arrived last Monday, we're very grateful to the customers of the whistling who donated it to us.

The kitchen, where we do a lot of cooking

The rabbit hutch, where Respin the rabbit lives

The first aid cabinet (very important)

The office, which is really a store room for art & craft materials (for painting, line-cutting, silk-screening, candle-making and anything else we can think of. We're always short of materials, especially paint and paper, and are looking out for anything anyone can spare.

The new sickle game that everyone's playing these days

Big table for painting etc.

Toilets

This is where we all sit around drinking cups of tea (especially the leaders, John, Anthea, Harry & Sara) and playing chess, draughts, backgammon, mastermind etc.

The gate, with the notice outside.

The minibus: at the moment, none of the leaders is insured to drive our minibus so we can't use it as much as we'd like to. We are looking for people over 25, with clean licenses, who volunteer to drive for us sometimes.

To the North Southwark Community Development Group Office (at 108, St. Guildford St. Phone 928 8165) where our committee meets, and where you can send mail or phone messages to us.

We often light bonfires to keep ourselves warm, and burn the rubbish.

The structures: Swings, slides, towers, ramps, platforms, catwalks etc. Most of them are now quite old and we're going to build some more. We need a lot more wood. If anyone knows somewhere (like a demolition site) where we might get a load of old heavy timber, free or very cheap, do please let us know.

Our Usual Pad

The bell rings, school ends for another day. Everyone rushes to the school gate. Just like being let out of prison.

And now six hours to do what you want to do. Not what other people tell you to do. The same routine; go home, have your tea, Watch television and then . . . To Mint Street.

The walk to the playground is dark, Misty and cold and one big bore. Ping, pong, ping, pong, the sound hits you As you walk in the door. Skittles falling, kids shouting And some kids rolling all over the floor.

Put that fag out, mind your language; The rules are quite insane. Every time they hear it They buckle up in pain.

Walls are covered with names and paintings, And people standing about debating Whether good or bad.

Silk-screens, lino-cuts, cooking too. Oh my God, what a lot to do. Eight o'clock comes, the lights are switched off, The door is closed, the padlock locked, And so . . . home.

we care — why won't they listen?!

Your correspondent has sat in at many meetings of Southwark's Planning Committee and usually comes out depressed by the discussion of various development schemes but never was he more shaken than on March 7th at Peckham Town Hall when a planning application for the old Vickers building in Borough Road was "considered" by the Committee.

The planning officer presenting the proposal for offices, and a tenants hall and day centre next door to the new Scovell Road estate told the Committee that he had received no representations to the public. This was astounding news for

Mr Con Rudduch of the Lake, Ley and Lefroy Tenants Association who had rung up the same officer on a number of occasions expressing concern about the two industrial firms that are presently on the site. What arrangements have been made to protect 41 jobs? Apparently, none because the firms have told Southwark they didn't want to move.

A letter from the North Southwark Community Development Group about the jobs and the use of the tenants hall was "not received" by the Council even though the planning officer in question knew that the NSCDG was writing a letter. Why

didn't that officer contact the NSCDG or Con Rudduch saying that he had not heard from them knowing their concern about the development.

Your correspondent ends up drawing the discouraging conclusion that the procedure for consulting local people about development proposals is not taken seriously by the Council. The officers seem to think that each proposal is just work for them to clear off their desks and any consideration that this affects people or that people out there in the community CARE seems far from their minds.

Dickens Revisited

ONLY THE DATE IS DIFFERENT. Here is a quotation from a recent London Borough of Southwark publication:

"To reach this place, the visitor has to penetrate through a maze of close, narrow and muddy streets, thronged by the roughest and poorest of waterside people..."

"In Jacobs Island - now Street - the warehouses are roofless and empty, the walls are crumbling down, the windows are windows no more, the doors are falling into the streets..."

"The houses have no owners, they are broken open and entered by those who have the courage, and there they live, and there they die."



THE SE1 AREA IS IN THE DEPTH

OF ECONOMIC DEPRESSION—thousands of residents are out of work, traditional local industries are declining and most of the new jobs being created are unsuited to the needs of local people. To hear that this grim story is typical of many other inner city areas in the country is no consolation to those on the dole. Consider some of the nightmare statistics—

In January of this year nearly 4000 people were registered at the Borough and Bermondsey employment exchanges which cover North Southwark and North Lambeth. Women accounted for one-sixth of the total.

This means that SE1 has a large share of the unemployed in Southwark and Lambeth as a whole, who total nearly 8000 in Southwark and over 8000 in Lambeth.

In addition, both boroughs are well above the unemployment figures for London and the whole of the U.K. In January 8% of Southwark's working men were unemployed, compared with about 5% in Greater London and 7½% nationally (sorry, but the comparable figures for women are not available).

Waterloo Festival 1978

THE WATERLOO FESTIVAL COMMITTEE HAD ITS FIRST MEETING in the middle of March. A few of the people who were involved in the street parties last year have joined in, but the committee needs more help in:

- * booking groups
- * fundraising
- * contacting local groups
- * publicising the Festival

We have provisionally set the dates for the one-day Festival to be Sunday, either 2nd or 9th July.

Quote of the Month .. GLC Drip!

A GLC tenant on the Tanswell Estate told SE1:

"I showed my leaking roof to a GLC officer. He said it was because it had rained very hard".

Nice to know that publicly-owned housing is in expert hands!

ments in the area.

Should not the LBS historians be concerned in listing the efforts and the results of these groups and individuals, people like Bevington, Brown, Bustin, Scott-Lidgett and Salter, to name a few, before their efforts and results are forgotten and the results swallowed up by the bureaucratic and monolithic organisation which now controls our lives as well as the area.

we need ideas for competitions, games, stalls, entertainers, shows, displays, etc., and anything else you think should happen.

The next Festival Committee meeting is Tuesday 4th April, at 7 pm, at the Waterloo Action Centre, 14 Baylis Road, SE1. If you can't make the meetings and want to help, please drop in and see Marge Stewart at WAC (tel 261 1404).

residents to note noise

A PETITION FROM RESIDENTS of Copperfield Street and Union Street has been handed in to the Bishop of Southwark protesting at the possible use of All Hallows Church for a recording studio at all times except from 2am to 5am. This means potential noise practically all night. So far the church has not been soundproofed by the recording organisation that wants to use the church.

According to the rules for the use of church property the Church authorities must publicise their intentions in order to obtain what is called a "faculty" to use the church for purposes that are not connected with religion.

Will 130 signatures of people living within earshot of the church make the Provost of Southwark Cathedral change his mind?

The farce is with us

A rumour seems to be spreading around the Elephant & Castle area. Unfortunately the rumour does have a hard core reality behind it. Star Wars is here. If you are the type of person who enjoys playing on those ridiculous computerised machines in pubs, then I advise you strongly not to miss this amazing rip off of a picture.

On the other hand, if like me you hate those machines and believe that people who play them should be lobotomised, then give this film a miss. If you have kids and they start pestering you about Star Wars, just inform them that no such film exists.

According to legend, Star Wars has broken every box-office record, at every cinema, in every town or city in America. This of course says a lot for the American mentality which has always been easy to con. In this country Star Wars has gone down like a Zeppelin. It hasn't really caught the imagination of the cinema-going public, also it hasn't conned the public into buying all the junk that goes with the film, ie Star Wars t-shirts, games, etc.

Insult

Apart from the two lovable robots and a tremendous evil character called Darth Vader, Star Wars is a cinematic insult to the intelligence of adults and kids alike. It boasts three of the ugliest heroes you have ever seen, special effects that aren't very good, and Alec Guinness, who by the way has an interest in the film. Not only did he get a whopping great fee but he also palms off a percentage of the takings.

The first half hour of the film did intrigue me..it actually had a story line. Afterwards there are laser beam battles through space and lots of people being wasted to the ground. In fact the villains, who all look like Russian troops, blow up an entire planet and happily zoom off to do damage elsewhere. Peter Cushing, who plays the boss of the villains, seems embarrassed by all that is going on around him but somehow grins and bears it. The end of the film contains the most embarrassing scene ever witnessed on the screen: hundreds and hundreds of men and women in silly costumes shout out, "The Force be with you." UGH!

Just in passing, the rockets ships in the film look uncomfortably like the Heygate Estate. Maybe the planning dept of Southwark Council had something to do with the film.

Alphie

WHERE HAS THE WORK GONE?

PETER MACDONAGH, RECENTLY APPOINTED EMPLOYMENT DEVELOPMENT OFFICER FOR SOUTHWARK COUNCIL OF VOLUNTARY SERVICE, OPENS OUR SERIES OF ARTICLES ON UNEMPLOYMENT WITH SOME FACTS AND FIGURES.

What's happened to all the jobs? Inner city areas, the traditional location of much manufacturing industry, are being hit by a combination of influences.

New industrial technology has been replacing labour with machinery—output rises while the demand for workers falls. Also, companies are relocating and expanding outside the inner cities, where land is cheaper and more easily available, so that it is more profitable to build new factories rather than rehabilitate old ones.

On top of this we are in the midst of a world-wide economic recession. Places like Southwark get hit hardest, having suffered from a run-down of investment in new machinery and from a lack of expansion.

Government reaction to the economic situation has been to cut spending at national and local level, which results in a reduced public sector work force.

One estimate for Southwark is that 31,000 jobs have been lost in the past ten years, the vast proportion of them in manufacturing, construction, transport, communication and distribution.

The only sector of employment which has been increasing is the office-based finance industry. But "this goes only a very small way towards making up job losses in the manufacturing and other sectors, and provides employment for workers with different skills and training" to those in the resident population. ("Employment in Southwark", Southwark Trades Council, May 1976.)

The overall trends give no reason for thinking that the situation will improve. On the contrary, consider the article—headline "Redundancy Shock" in the February 1978 Newsheet issued by Southwark Trades

Council, which says:

"AN APPALLING TOTAL of 17 Southwark firms have reported to the Department of Employment that 2,095 people are to lose their jobs. This includes the closure of Raelbrook's blouse factory in Asylum Road, the move of Haywards Pickles (Brooke Bond Group) from the Old Kent Road to Bury St. Edmunds, the proposed cuts of 300 by Courage's Southeastern Division and 1000 by the GLC."

Many of those to be made redundant live locally and the closures are bound to affect other industrial and employment prospects in the area.

NEXT ISSUE: THE CAUSES.

Support Your Local Shop

OPEN UNTIL 6pm MONDAY-FRIDAY, 7pm SATURDAY, 1pm SUNDAY.

- * fresh milk daily
- * frozen foods
- * all groceries & provisions

- * newspapers
- * confectioners & tobacconists
- * hot snacks, rolls and sandwiches to take away

Green Shield Stamps on all items. Double Stamp Saturdays.

TROS. E. DAVIES & CO (TOMS)

137 Southwark Bridge Road, SE1

THIS ARTICLE WHICH WAS PUT TOGETHER BY THE STAFF AND CHILDREN OF MINT STREET FIRST APPEARED IN LONG LANE.

What Where When?

COUNCIL MEETINGS

LAMBETH, at Lambeth Town Hall, Brixton Hill, 7.15 pm

Planning and Development Cttee Monday 3rd April
Amenity and Services Cttee Wednesday 5th April
Health and Consumer Services Cttee Thursday 6th April
Housing Cttee Monday 10th April
Social Services Cttee Wednesday 12th April

SOUTHWARK, at Peckham Town Hall, Peckham Road, 7 pm

Community Land Act Sub-cttee Monday 3rd April
Planning Applications Sub-cttee Mon 3rd/Tue 18th April
Housing Management Sub-cttee Wednesday 12th April
Council Wednesday 19th April

PUBLIC MEETINGS & MARCHES

Anti-Apartheid Meeting, organised by Southwark and Lambeth Trades Councils; includes slide show on Soweto, with Bob Hughes MP and Bob Wright (Asst Gen Sec of AUEW) attending Fri 7th April at Council Chambers, Walworth Road

Stop Windscale Demonstration Saturday 29th April, meet at Speakers Corner, Hyde Park, 12 pm

ENTERTAINMENTS

Starlight Cabaret, at North Peckham Civic Centre, Old Kent Road 2½ hour non-stop show, dancing till midnight; from 8 pm, bar opens at 7 pm; tickets £2

Friday 31st March - Anne Shelton
Friday 14th April - Charlie Smithers
Friday 28th April - George Roper

"There'll Always Be An England", at North Peckham Civic Centre Hit songs of the forties; tickets 50p, starts at 7.30 pm; Tuesday 4th April

Exhibition, "Art in Southwark Secondary Schools", closes Thursday 20th April, at South London Art Gallery, Peckham Road, weekdays 1 am - 6 pm, Sundays 3 pm - 6 pm; admission free

Waterloo Womens Group

Come and join us! The kids are looked after in a playgroup while we get together and relax. Films, discussions, speakers and cuttings in the summer.

MONDAYS at 1.30 pm at Barley Mow Clinic, Greet House, Frazier St., SE1. Playgroup is in Campbell Buildings Tenants Association Flat at 292, Campbell Buildings. All women welcome!

KEEP FIT

KEEP-FIT at COLOMBO ST. SPORTS AND COMMUNITY CENTRE.

All women welcome. Bring your kids with you. Good for you and fun for the kids. Try it once and you'll come every week. TUESDAYS at COLOMBO ST. SPORTS AND COMMUNITY CENTRE, COLOMBO ST. SE1.



12 Meymott Street, S.E.1.
tel: 928-1643

S.E.1 Meetings

7.30 Monday April 10: meeting
7.30 Monday April 17: meeting

Paste-up (where the articles get typed out and laid out on the pages to go to the printer) is on the weekend of 22/23 April, starting about 11am each day.

Deadline for final copy of articles is Monday April 17th. Stop press deadline April 22nd.

Lions: fighting media hysteria and relegation

MILLWALL MAY BE IN BIG TROUBLE SOON. The fighting during the recent FA Cup tie with Ipswich has brought screaming headlines from those newspapers which seem to pay more attention to what happens off the pitch than on it.

Gory scenes on Match of the Day have helped to whip up the feeling that it's about time Millwall was made an example of. Is it a coincidence that the BBC chose to film a match where there was every chance of trouble occurring, and so justified their sensationalist Panorama programme?

Den to close?

The Football Association announced that they will hold an enquiry into the trouble on March 23rd and it is widely expected that they will close The Den for some time. This is possible, as Millwall is a small club and lacks the influence in the league of, say, Manchester United, Leeds and Chelsea, all of which have escaped similar penalties.

Dennis Hgwell, the Minister for Sport, is also to hold his own enquiry, and with the government breathing down its neck the FA is surely still more likely to reach a harsh decision.

Neither of these enquiries is likely to help Millwall's fight to escape relegation. They were recently unlucky to drop a valuable point at home to Burnley. Despite John Seaman and Barry Kitcheners being only half fit, Millwall had Burnley well on the run in a storming first half. Bryan Hamilton hit the post and saw a booming 25 yard shot go just wide. Phil Walker had a shot kicked off the line, but another bounced out to Trevor Lee, who forced the ball over the line to give Millwall the lead minutes before half-time. Millwall faded after the interval, but it took a penalty to bring Burnley level.

Mehmet brilliant

Millwall sustained their first half form right through the match with Charlton. The genuine fans at last made themselves heard and led the team to a fine 2-0 win. Further injury problems saw Dave Mehmet, Roger Sroos and Tony Tagg drafted into the side, but Mehmet produced a brilliant midfield display and looked anything but a reserve.

WRITE

to SE1. We want to hear your news and views. Send your letters to: SE1 Community Newspaper, 12 Meymott St, SE1.

Hamilton put Millwall ahead five minutes after the end of a closely fought first-half and a brilliant pass from Mehmet put Walker clear to score the second fifteen minutes later.

Away to Hull the following Saturday, Millwall were unlucky not to take a point. Injuries again caused problems. Nicky Johns pulled a ham-string in the first minute and Bryan Hamilton limped off at the end.

Warboys scored a hat-trick for Hull, but Millwall refused to give up. 3-1 down with ten minutes to go and only ten men left, they stormed back. Dave Mehmet scored a fine goal and Millwall were pressing hard for the equaliser at the end.

Millwall's Easter fixtures will be crucial to their Second Division survival. They are at home to Orient on Good Friday, are at home again to Cardiff the following day, and travel to Tottenham on Easter Monday. Orient are not themselves free from relegation fears, so are unlikely to relax with their FA Cup semi-final in mind. It must be admitted that on their current form Orient are a formidable side. Their tight man-to-man marking and use of a sweeper could cause problems for the Millwall forwards, and Peter Kitchen could give the defence an uneasy afternoon.

Cardiff, however, are a different proposition. They are the only side in the Second Division not to have won away from home all season and the fact that the club's dire financial position has forced it to put the entire first team up for sale cannot have done much for their morale. Millwall must beat them if they are to stay up.

Tottenham, on the other hand, are the only side in the Division that is unbeaten at home. Charlton, though, came very close to beating them a few weeks ago, so they are not invincible.

If injuries clear up and Millwall have a little luck they should take three points from these fixtures.

Community Health Council

Final consultation document

for the future of Lambeth.

Hospital are now available at

the CHC offices or at the

Waterloo Action Centre,

14 Baylis Road

YOUR RIGHTS How to make them fix it

YOU MAY BE ABLE TO GET THE COUNCIL TO PAY FOR REPAIRS YOU DO YOURSELF on the flat or house you actually rent, though not on other parts of the block or estate, nor for improvements.

The Council is supposed to repair roofs, gutters, outside pipes, drains, plumbing, toilets, cisterns, sinks, basins, baths, water heaters, gas pipes, radiators, electrical wiring, ceilings, party walls, outside walls, windows, doors, any heating that cannot be moved, and anything else mentioned in your tenancy agreement.

The law says that the Council should do the repairs, but there is a legal method to force the Council to pay for the repairs for which they are responsible.

However, as with all legal procedures, it is imperative that you behave within the law at all times. Lambeth Law Centre's 'Council Tenants Repairs Kit', and BIAS at the Blackfriars Settlement can give you full advice on this procedure. Please make sure you know the procedure by contacting us.

The only problems are that you must first find the money to pay the builder or plumber, etc., and that you must inform the Council of what you intend to do and give them a chance to do it themselves. For this purpose, please contact us at BIAS, 44/47 Nelson Square, SE1 - tel 928 9521. Repairs can be done quite easily, so long as the procedure is followed properly.

GROCERIES ART GRAFT

SAINSBURY'S THE WELL-KNOWN SE1 FOOD FIRM have stirred up a hornet's nest over plans to build a huge arts/culture centre in all of places the University of East Anglia.

Quite what the connection is between SE1 and East Anglia has yet to be revealed, but a huge monument in the artistic form of an aircraft hanger has been erected on the University campus.

Trade unions such as ASTMS, CSEU, NALGO, NUPE and the students union have formed an action committee to monitor the project, as they are worried that the centre may turn into a giant white elephant. The initial explosion was caused when it was revealed that the University was going to spend £10,000 on the opening ceremonies.

It is known that Lord Sainsbury has been looking for some time for a home for his art collection, described by some as a collection of little importance. The art world is puzzled by this apparent show of extravagance.

Residents of SE1 may think that perhaps Lord Sainsbury might better have spent his money in this area by reopening the supermarket in Stamford Street.

Rumours that his son Tim was a little piqued that the project was not sited at his local university, Sussex, say it could have something to do with the fact that Lord Sainsbury is a Labour peer. Norwich is a Labour stronghold, whereas Boy Tim is a Tory representing Hove.

The honorary degree that Lord Sainsbury received last July may have been the University's side of the bargain.

BIAS SEEKS DAYTIME VOLUNTEERS TO HELP US GIVE ADVICE AND INFORMATION TO LOCAL PEOPLE. NO PREVIOUS EXPERIENCE NEEDED. CLAIMANTS WELCOME. FOR MORE DETAIL PLEASE PHONE US OR DROP IN ANYTIME EXCEPT WED & THU MORNINGS. Blackfriars Information Action Support, 44/47 Nelson Square, SE1 - 928 9521.

Rheumatism

DO YOU SUFFER WITH RHEUMATISM?

Come to a meeting on Thursday 13th April! Have a chat and watch the film.

A film about rheumatism will be shown at 10.30 am and 2 pm. There are about 70 diseases under the label rheumatism, including sciatica, lumbago, arthritis, gout, slipped discs.

This film shows what happens in some of the most common kinds of rheumatism, why it happens, and what can be done about it (if anything at all).

The meeting will be at 292 CAMPBELL BUILDINGS, Tenants Association Flat, Frazier St, SE1. Tea and biscuits will be provided.

More details are available from Jane Miller, Waterloo Action Centre, 14 Baylis Road, SE1 - tel 261 1404.

FREE CONTRACEPTIVES are available ON THE NHS for all men and women

at the Barley Mow Community Clinic, Tanswell Estate, Waterloo (on the corner of Pearman Street and Frazier Street)

● every Monday evening from 5.45 to 7.45

● every Thursday evening from 5.45 to 7.45

Just walk in — or ring 674 3502 for an appointment or further information.

making your own SKATEBOARDS

MAKING YOUR OWN

A piece of wood and a pair of roller skates are not a cheap way of making a skateboard — merely the fastest route to the nearest casualty ward!

To make one you will need to buy all the component parts mentioned below and put them together, which is not much cheaper than buying one.

WHAT TYPE OF BOARD? There are three main parts to look at when you buy a skateboard: the DECK — the board you stand on; the WHEELS and the TRUCK — the suspension system with its bearings; there are details of these parts below. You should choose a board to fit the user's skills — a fast stunt board is not the best board for a beginner.

DECKS: These can be made of wood, plastic, glass fibre reinforced plastic, or aluminium.

* FLEXIBLE DECKS are more difficult for beginners but better for stunts.

* RIGID DECKS are better for beginners and faster for downhill runs.

* SHORT DECKS up to 60 cms are better for experts and stunts. LONGER DECKS over 60 cms are better for beginners and downhill or long distances.

* KICKTAILS, boards which go up at the back, are better for stunts.

THE DECK SHOULD BE NON-SLIP, WITH EITHER MOULDED TREADS OR 'GRIP' SANDPAPER-LIKE STRIPS.

TRUCKS: There are two basic types of trucks, one which lets the board move to absorb bumps and one which lets the board move from side to side, which gives more accurate steering — this is especially useful for slalom and tricks. The trucks are screwed or bolted (which is better) to the decks.

* Locking nuts are the best method.

* Check the nuts for tightness before you buy.

* Longer wheelbase — better for beginners.

* Shorter wheelbase — better for experts and stunts.

WHEELS:

* 'SLICKS' are 3cm to 4cm wide, better for stunts.

* 'STOKERS' are 5cm to 6cm wide, better for downhill.

* 'PLASTIC' wheels are best; they are faster and tougher than.

* 'RUBBER' wheels, which are cheaper but not as good.

SEALED BEARINGS ARE BEST. If you can see most of the bearings it is probably not sealed. Make sure all the ball bearings are in. There may be a gap, but this should not be bigger than the space one ball bearing would take up.

Rock the wheels up and down before you buy — if there is too much play the bearings may not last very long.

SERVICING: Find out if the shop where you buy your skateboard can service it for you. It's better to buy from one that will.

PROTECTIVE CLOTHING: Wear elbow and knee pads, a helmet and flat-soled shoes with a grip on the soles. You may have to spend £15 on special clothing to be as safe as you can be.

REMEMBER: DON'T SKATEBOARD WHEN IT IS WET OR DARK, AND DON'T SKATEBOARD ON ROADS OR PAVEMENTS — IT'S TOO DANGEROUS.

Each Consumer Advice Centre in Lambeth has information on prices, where to buy and reports of tests on skateboards carried out by the Consumers Association. Ask for advice before you buy: either Mobile Consumer Services Unit, outside Waterloo Action Centre, 14 Baylis Road, SE1 — Wednesdays 10-4; or Lambeth Walk Consumer Advice Centre, Shopping Precinct, SE11; (other locations in Streatham, Brixton, Clapham & Norwood) or ring Lambeth Consumer Services, who provided this information, at 274 7467.



Robert Stow, 11 yrs, Blackfriars Photo Project

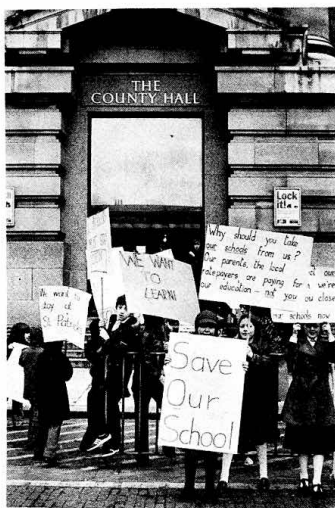
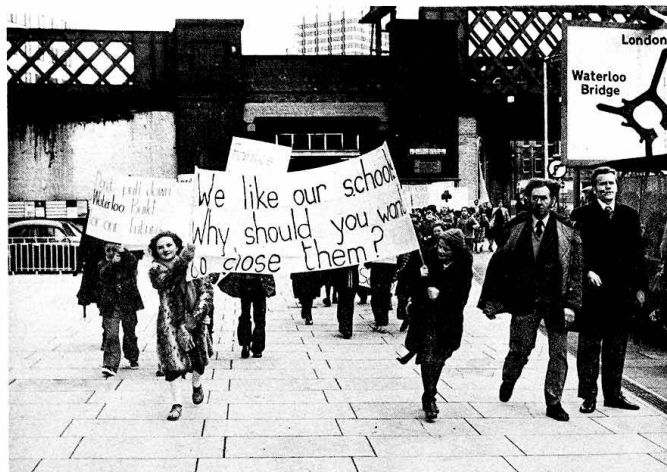
SAVE OUR SCHOOLS

The fight to keep St Andrews and St Johns and St Patricks Schools open reached yet another climax on Wednesday 15th March. The Education Sub-Committee sat at County Hall to discuss the proposed closure of the two schools. The meeting was well attended by parents, teachers, managers and supporters of both schools, and the children from St Patricks staged a demonstration with banners on the steps of County Hall. The gallery of the chamber was filled and an overflow room was arranged with loudspeakers so that the children with their teachers could hear the debate.

We were given a fair hearing which lasted one hour ten minutes. Although we disagreed loudly with some of the remarks made our case was put over favourably by the officer concerned Mr Ewen Carr, our GLC representative, spoke on our behalf and pushed the view that a school was needed in this area if plans for future family housing in this part of Waterloo were to gain any fruition. He also requested that the committee should refer its action until 19th April or later to allow the managements of both schools more time to meet with their Diocesan Boards of Education, who had both written to the Education Sub-Committee that they agreed with ILEA regarding the proposed closure and could not see there being enough children in the near future to warrant a joint Ecumenical School, which of course the community of Waterloo would agree is utter rubbish; after all, what is the Waterloo Plan all about?

(The Diocesan Education Boards had at no time informed the schools' managements of their intentions or even had the courtesy to deliver copies of their letter to the chairmen of the two managements. We have notified them at all times of our intentions.)

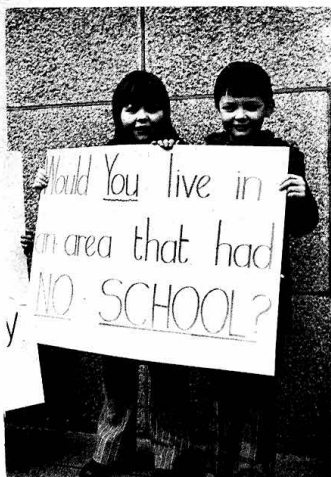
Mr Carr was supported by Margaret Williams and Sonia Copland, along with other members of the committee. We have been granted



a referral until 19th April.

We need your support more than ever now, and I would be grateful of the community's views in writing regarding their views of an Ecumenical School for this community - to reach us before 19th April, please.

Write to:
Maureen Phillips, Chairman
of the Action Committee,
2A Peabody Estate, Stamford
Street, SE1



N.Southwark Project Residents Fight Back

A DEFENCE COMMITTEE of local residents has been formed to make sure that the North Southwark project office in Great Guildford Street does not have to close in December.

As we reported in last month's SE1, the project is to have its funding cut off by Southwark at the end of the year. The Defence Committee is preparing a report to the Council on the work of the project and is to try to persuade the Council to renew funding.

The Committee feel that the Council does not know enough about the work the project does on a whole range of local issues including homes, jobs, shops, and advice on rent, rate and social security problems.

The support for the project since the announcement of the cut-back has been fantastic. Dozens of organisations - tenants associations, churches, settlements, trade unions - have written to the Council in protest. Individual have also written in or signed petitions.

Stamford Rovers Womens' dart s

WITH EILEEN DUGDALE, WOMAN OF THE MATCH, scoring 104 in three darts, Stamford Rovers won the first game. The second was very close, and the Angel team won.

The third and deciding game was also very close, with both teams having to finish on DOUBLE ONE. In a very sporting game by both teams, the Stamford team were very unlucky not to win, with both Vicky and Peggy unlucky in their efforts to get the double one required. (SE1 appologises for not getting the Rovers dart team into last issue.)

Subway Muggings

THE DRAPER TENANTS ASSOCIATION at the Elephant and Castle have taken up the issue of 'mugging'. Following the several attacks on tenants, both in the shopping centre and in the now notorious subways, the TA called a meeting. Sgt. Margiotta from the Borough police station and representatives from the North Southwark Community Development Group discussed with the tenants possible solutions to the problem.

Mr. Mortlock, Chairperson of the TA told Sgt. Margiotta that tenants were unhappy about the police cover in the Shopping Centre and subways. Sgt. Margiotta told the TA that cover for the area was the best in the division and whilst this was probably not a lot of consolation to residents, police were in the vicinity of the shopping centre most of the day. This and the fact that they had recently had several arrests led him to believe that all that was possible from the police point of view was being done.

There have been 8 attacks in the subways and shopping centre this year, and these have been at all times of the day. The Tenants Association are going to be pressing for a pedestrian crossing across the Walworth Road exit from the Elephant and Castle roundabout to the shopping centre, and they will be contacting local MP Bob Mellish and GLC member Sir Reg Goodwin for support.

Certainly the Elephant and Castle shopping centre has though problems without the added one of people being scared to use the place. The subways have proved a disaster, and it is now up to public authorities to find a solution. Certainly the idea of a road crossing needs very serious attention.



Photo: Blackfriars Photography Project

Photo: Blackfriars Photography Project