



Elephant for new HQ?

SOUTHWARK HAVE SUDDENLY SWITCHED their attention to a derelict site at the Elephant and Castle as an alternative location for the £50 million New Town Hall. The Council agreed behind closed doors to make a bid within days for the £4 million site at Skipton Street including the old South London Press building.

The site is owned by the GLC. The New Town Hall will require a massive 388,000 square feet of offices which they admit in a confidential report will be a bulkier building than normally allowed.

It is also admitted in the report that community opposition is likely to prevent Southwark from being successful at the forthcoming public inquiry into the Compulsory Purchase Orders that have been served on the Peckham site.

After the storm of protest at the undemocratic way the Town Hall was foisted on Peckham, the same secrecy and lack of public consultation surrounds the Elephant and Castle scheme. None of the community bodies, town hall trades unions, or local ward Labour Parties have been consulted over the latest move.

The confidential report which which went to the Labour Group without prior warning or discussion last week states that

the Elephant and Castle site "was the originally preferred site for the New Town Hall". Why did they not try and buy it earlier or discuss this option publicly?

The switch to the Elephant may increase the already huge price tag of the scheme. The cost of the land is higher and the new site means a set of new plans, or at least major changes to the old ones.

Waterloo Schools

open next term

A FIRM DECISION on the future of two Waterloo primary schools, St Andrew's and St Patrick's, is still awaited but one thing is definite BOTH SCHOOLS WILL BE OPEN NEXT SEPTEMBER.

The fight to retain the schools has lasted over a year and the decision now rests with the Secretary of State for Education. An alternative plan to keep one school open to all children in the area has been proposed by the school managers and parents.

Wally Fletcher

Fighter for DOCKLANDS.

We are sad to record that Wally Fletcher died of a heart attack on June 19th. He will be missed by all those who are working, as he did, for the regeneration of Docklands for the people. Wally was Chairman of the Downtown Tenants Association for some years, and a member of the Joint Docklands Forum.

A fund is being set up to plant a tree in his memory in the docks, and contributions to the fund can be sent to The Treasurer, Bermondsey and Rotherhithe Society, 5, Lewes House, Druid Street, SE1.

SE1 wishes to express sympathy to those who knew and loved him, and hopes that there is not one, but many people ready to take his place among those willing to devote time and energy to the fight for better living standards, better housing and better facilities for all the people of the area.



A RALLY OF 200 LOCAL PEOPLE GREETED THE OPENING OF THE COIN ST PUBLIC INQUIRY, AND THE MESSAGE WAS LOUD AND CLEAR - HOUSES WITH GARDENS, NOT OFFICES!

The rally was addressed by Lambeth and Southwark Councillors, a local MP, residents, and supporters from other parts of London and the country.

As the Inquiry moves towards its third month, a series of events both inside and outside has raised doubts in the minds of many as to whether it can really fulfill its intended purpose: a full and fair hearing into all the proposals for the future of the South Bank. Turn to the back page for the full story.

PRICE RISE

WE APOLOGISE TO ALL READERS OF SE1 for the increase in the price of the paper to 10p this month.

The last price increase was in December 1976, so we have probably broken a record by keeping the price the same for 2½ years. In this period we have managed to absorb the gradual increases in the cost of printing and materials, but can do so no more.

We would like to remind readers that the paper is produced and distributed each month entirely by the unpaid efforts of individuals and groups, and through the goodwill of the newsagents, pubs, clubs and other centres who stock the paper. Thanks are owed to all these people - perhaps you, reader, would like to thank your distributor the next time you see him/her.

And if you have either praise or criticism for anything in the paper, don't just buy more copies, or stop reading the paper - WRITE to SE1, at 12 Meymott Street, SE1, and let us know about it!



HAS PADDINGTON BEAR strayed into Waterloo? If so, where can you find him? See page 7 for the answer.

What's inside

NEW CHEMIST IN THE CUT	page 2
A LIFETIME AT WILLCOX'S	page 5
GO AHEAD FOR NEW PARK	page 3
CAMPBELL BUILDINGS DEMOLITION	page 6
WATERLOO WOODY'S BIRTHDAY HONOURS	page 7



NEW CHEMIST FOR THE CUT

I heard a rumour about 2 weeks ago that we were going to have a chemist or druggist in the Cut, and I thought if it was true it would be a chemist. On Tuesday 22nd I saw two men coming out of the shop that was the Co-op Butchers, so I approached them and asked them if they were going to open the shop as a chemist or druggist, and they told me it was a chemist. I told them that not only me, but a lot of people around Blackfriars would be very happy so it seems that often 5 or 6 years hard fight it does seem that at last we have achieved our object and to all those who worked so hard I

Congratulations Mr Hare on a fine piece of investigation. and thankyou for letting us know. The chemist will open in about two months time and will handle prescriptions. We welcome news contributions like this so if you know something, let us know!

inspector told that at this stage, the inquiry will just make the points of all the plans within fifteen minutes, and to keep it brief.

The housing plan was put to the inspector by two of the groups, Lambeth Council and the Association of Waterlog Groups, within

[illegible]

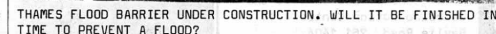
Mr. Samuel Floyd
133 Campbell Buildings
Frazier Street, SE1.

Isobel Bowie.

A Duchy St. Peabody estate resident.

planning issues including the next stage of the North South-west Local Plan - the so-called Options Stage. Whether these new sophisticated techniques can enable the key issues affecting the area to be glossed over by the Council remains to be seen.

One Tory GLC councillor was quoted as saying last week, "if this is not allowed several major firms will leave the City of London". This is a fantastic notion. If City businessmen cannot use public transport to get to work like the rest of us we would be better without them. Moreover, it is certainly quite untrue that any major firm in the city would leave simply because some of their clients or directors could not fly in once in a while. No firm can



The site is currently used for a car park, but cars will have to park elsewhere soon as work is due to commence in July, and most of the old tarmac is being removed to be replaced by grass, shrubs and paving stones.

If you would like to make any comments or suggestions to the Landscape Architects about any of these sites, please call in at the Waterloo Action Centre, 14 Baylis Road, and the workers there will be pleased to pass these on.

The £130m Olympic route is a new dual carriageway 5 miles long between Bricklayers Arms and Woolwich. It will cut off the corner of Southwark Park on a flyover, tunnel under the Thames, occupy the lower Millwall Docks (and cause their closure) and tunnel again under the Thames on its way to Woolwich. In the course of its devastation it will cause the loss of over 600 jobs by the GLC's own estimates and make sound insulation vital for 18 new housing estates.

Every home in the SE1 is in the flood danger area! The tube system, factories and hospitals would also be affected. £16 million does not seem too much to ask the GLC to spend, when compared with the devastation caused by such a flood. Are the GLC justified in taking this gamble with our lives?

Yours,
Nick Lester
Colombo Street Sports Centre
Colombo Street, SE1

Dear SE1, It is a pity that you were not better informed before attacking the Young Vic Theatre in your last issue. The Young Vic, over the past year, has managed to secure via grant aid from various sources, and income, a total of £120,000 for its Education and Community Service. Of this, the contribution from Southwark is £1,000 and for this £1,000 Southwark, along with Lambeth, receives an EXCLUSIVE service to its community and schools. By service we mean projects in conjunction with local communities, schools, teachers, social workers, youth leaders and action groups. The demand for our Youth Theatre, drawn from almost all ethnic groups in SE1, is so great that we are now running five sessions a week. A large scale project with these children is under way for August. A series of parks and street playschemes is under way for the whole of the summer vacation. Our own community festival runs for three weeks in July, when we will be hosting a large number of local groups, including the Southwark Youth in Arts programme, plus our own programme of Street Theatre. We are currently touring old people's homes and hospitals in this area with a project in aid of the Coin Street demonstrations. No bad bargain for £1,000 ... It irks me to have to write like this, to explain in number the kind of projects in which we are engaged, should be the duty of a paper that is dedicated to the welfare of SE1 to ensure that it understands fully the involvement of a Young People's and Community Theatre working in its midst.

We have to admit that our article last month was unfair to the Young Vic. Our main attack was at Southwark Council for their meanness in funding sport and arts and their astonishing decision to give the Old Vic so much money compared to everyone else (including the Young Vic).

It is deplorable but true that GLC did not plan any consultation with local groups over this site. Through a personal contact, the landscape architect concerned obtained my name as Secretary of Trinity Newington Residents' Association (which incidentally represents residents of Cole Street, Falmouth Road, Swan Street and Trinity Street as well as Trinity Church Square and Merrick Square). He rang me to ask our views - two days before he started work on the plans! When I discovered that he was not intending to consult the Rockingham TA, I rang their Secretary, Barbara

Lesley M. Exton, Secretary,
Trinity Newington Residents'
Association.

there wasn't much activity there, no excitement. I thought it went very well. That was the first of the inquiry meetings, and I hope to go to many more, and I hope to keep in touch with the inquiry.

Isobel Bowie.



Waterloo takes to the streets

THE WATERLOO FESTIVAL takes place this month, in the Lower Marsh area, from 12 to 6pm on the 8th July. The procession will start the Festival, leaving at 12.30 from outside the Waterloo Action Centre, with music, dancing, theatre groups and floats. You too can participate by joining the Fancy Dress Parade - it will be fun!

There are a number of entertainment areas all the way down the Lower Marsh with something for everyone! Big and little kids alike will enjoy such things as Punch and Judy, the Clown Cavalcade, Beztuki puppet theatre, John Styles - ventriloquist/magician, Tinderbox - children's stories, with musical instruments, face painting competition, and sports and games. Musical acts (jazz, rock, drum and trumpet band, buskers) and theatre groups will be performing throughout the afternoon.

For those of you who are energetic enough and willing to stretch a few muscles (particularly in the arm!), the Pub Pram Race will start at the same time and place as the procession.

Details of all events can be found in the Festival programme, on sale at the Waterloo Action Centre price

10p. (Badges are also available at 15p each).

Help is still needed for such things as programme and badge selling and poster distribution, and offers to help on the day for periods of one hour (or more if you are able); assisting with setting up the stalls on the Sunday morning, helping in the canteen, supervising the bar, acting as a relief person to those working on the stalls, and judging the fancy dress, will be gratefully accepted!

So far, we have 25 stalls booked, of a wide variety. There is still room for more, so if you are interested in having one please contact the Waterloo Action Centre - 14 Baylis Road 261 1404.



The following is a list of acts appearing at the Festival: Michael Mulkernin - mime artist Rotherhithe drum and trumpet band

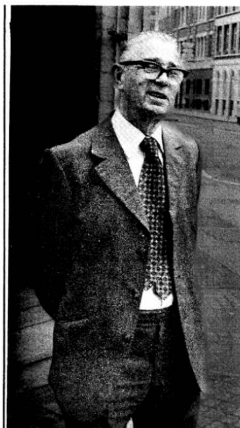
Sly Dog Rock band
Windbag jazz group
Joe Beeby - Punch & Judy
Marbles Theatre group
Majorettes
Alex O'Daly - accordionist
Omphalos theatre group
Brian Allison - singer
Covent Garden Community Theatre group

Mick's Rock Band
Morley College choir
Young Vic theatre group
Allstars Steel Band
Young Uns - Old Time music hall

Thud Community Theatre
Boxing and karate - Colombo
St Sports Centre
Beztuki puppet theatre
Morris dancers (female)
Tinderbox - stories & musical instruments

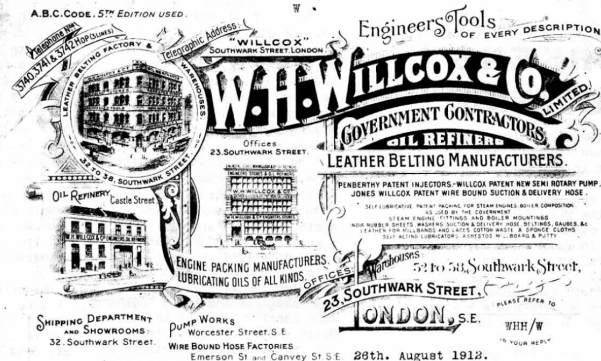
Toby Philpot - comedy street act
Clown Cavalcade
Puppet show
John Styles - ventriloquist/magician

Morley College jazz band



ABOVE:
Henry Rolphe.

RIGHT:
Willcox's letterhead in 1912 when they moved into new premises at 38 Southwark Street.



Strollers ~ oh so close!

In their first match of the '79 Cricket Season Southwark Strollers put up a game fight before narrowly being defeated by arch opponents, The Drege of Humanity.

(The Strollers are North Southwark's answer to professional cricket - if you would like to play contact them at 108 Great Guildford Street, SE1, tel: 928 8165.)

Strollers' lack of match practice was obvious - several players had problems deciding

which end to hold bats and what to do with pads and boxes.

Their confusion about the name of the game was added to by the Drege's new uniform: flash yellow baseball hats donated by an American sponsor.

Drege batted first and after a slow start and the loss of an early wicket soon got on top of the bowling.

After 35 overs they closed with a formidable score of 169 for 5, two men having reached

A LIFETIME AT WILLCOX'S

IN APRIL 'SE1' REPORTED THAT WILLCOX'S ARE PLANNING TO MOVE FROM SOUTHWARK STREET WHERE THE FIRM HAS BEEN FOR OVER 100 YEARS AND CONVERT THE PREMISES TO OFFICES. MANY OF THEIR WORKERS COME FROM THE LOCAL AREA AND HAVE BEEN WITH THE COMPANY A LONG TIME. HERE WE PRESENT A PROFILE OF ONE OF THEM - HENRY ROLPHE.

W.H. Willcox's, the makers of pipes and engineering tools, have been operating in Southwark Street for over 100 years. The firm was set up in 1878. For over half that time Henry Rolphe has been working for them.

He works on the clerical side - for many years as a

buyer - now on sales. Things were a bit different when he started in 1922 - the technology wasn't so advanced!

'Duplexing' was a process where the image wanted was drawn in clay with ink. Henry then had to press paper down on the clay with a wet rag. You could only make 3 or 4 copies at a time.

When Henry started he was only 14 - he'd done a couple of other small jobs since

leaving school. He vividly remembers losing his first wage packet of ten bob on the way home from work.

THE WAR

During the war years Henry continued working at Willcox's. Their line of engineering equipment was of course of value to the army.

The war also found Henry still living in Faraday Street where he had been born. But the bombing took its toll both of his work and his home.

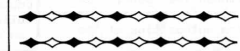
In 1939, Willcox's new set of offices in Southwark Street were gutted by incendiary bombs. Then towards the end of the war Michael Faraday School was hit by one of the pilotless 'V1' or 'V2' bombs. The debris was bad enough to destroy the Rolphes' home 50 yards away, so they had to move to Kennington.

Henry described the anxiety of the blitz: 'You'd look at a plane; someone would say 'Is that one of ours, then?' - and you'd say 'I'm blown if I know'.

AFTER THE WAR

Soon afterward, Henry got married. He and his wife lived a long time in Queen's Row, in the Walworth area.

Now they're retired to Herne Bay, where they're very happy. They like the calm and the quiet. But Henry is still working 5 days a week. He says 'My roots are so far in. It's part of my life.'



Housing ~ write on!

Edward Henry House Co-op is soon to start processing applications from anyone interested in living in one of the flats when modernisation is completed in 1981.

Edward Henry House in Cornwell Road has been taken over by the Co-op which was started by local people keen to see the buildings used for housing once again. The buildings are now empty waiting for modernisation to start in January 1980.

There will be 66 flats in all, with one, two or three bedrooms, plus gardens and play space.

The idea of the Co-op is that the people who live on the

estate will own and run it collectively, including deciding who lives there, repairs, cleaning, and collecting rents.

So that future residents can begin to get fully involved in the planning and running of the Co-op now, it was decided last month to start selecting people immediately. Those people who are offered a place in the Co-op will be expected to attend the meetings of the Co-op (held every 4 - 6 weeks) regularly.

If you are interested in joining the Co-op, ask for an application form and more details at the Waterloo Action Centre, 14 Baylis Road, SE1. Tel: 261 - 1404.

The ups and downs of Tower Bridge

TOWER BRIDGE MAY vibrate and crack when juggernauts trundle over it but its lifting machinery is as good as the day it was opened in 1894. The Bermondsey and Rotherhithe Society found out this and much more on their recent extensive tour of the Bridge. John Eamonn, a Bridge foreman, took the party below the water line to look at the massive machines and boilers that enable the Bridge to open with the flick of a switch.

Until a few years ago the hydraulic power required to lift the bridge spans (known as Bascule leaves for reasons that will require further research) was generated by two mighty furnaces that took over a day to warm up. Nowadays the Bridge is lifted by electric power but the lifting mechanism is exactly as it was in 1894 when the Prince of Wales opened the Bridge.

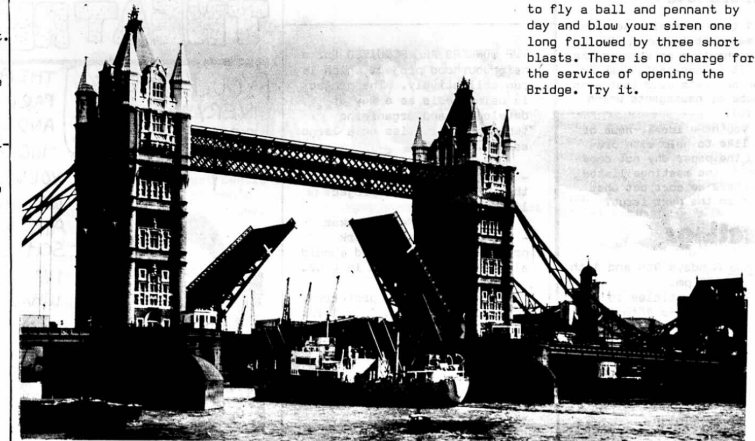
Each Bascule leaf is bal-

anced by counterpoises that swing up and down with the bridge in gigantic cathedral-like chambers that are located below the towers of the Bridge.

There are stairs up each of the towers to enable pedestrians to get across the Bridge if it was being lifted - they obviously did not want people using this as an excuse for not being able to get to work! The pedestrian ways across the top are known as Shore Spans. A lift has been put in to the tower on the City end of the Bridge because the Bridge House Estates hope eventually to open it up as a tourist attraction.

But Tower Bridge is not just a tourist attraction. There are several lifts a day to allow the Tower Pier-Southend passenger ship through, plus other vessels going into the inner Pool. This requires a full-time staff manning the Bridge 24 hours a day.

If you are coming up the Thames and want the Bridge to open for you all you need do is to fly a ball and pennant by day and blow your siren one long followed by three short blasts. There is no charge for the service of opening the Bridge. Try it.



Colombo Street Sports and Community Centre

tel: 261 1658

MAIN HALL AND MEETING ROOMS FOR HIRE... SOCIALS AND WEDDINGS WELCOMED.

USUAL SPORTING ACTIVITIES EG SHORINJI KEMPO, BOXING, KARATE, BADMINTON, OAP'S DANCING

Anyone interested in starting other activities, make yourself known.

COLOMBO STREET SPORTS AND COMMUNITY CENTRE, COLOMBO STREET, SE1

Southwark Youth Office proudly presents 'YOUTH WORK'

A non-stop drama happening every night of the week and at weekends involving hundreds of teenagers.

But there's a big problem. We need more part-time helpers to add to the cast. If you've got a few hours free and are interested in working with teenagers we could use you.

Ring Michael Pearce or David Evans on 701 8559 and ask for further details.

Saved From Dust

On Wednesday 13th June the Lambeth Housing Management sub-committee agreed to move out tenants in the 2nd block of Campbell Buildings flats before demolishing the first block which is directly opposite.

This decision is the result of 15 months campaigning from the Tenants Association. Originally Lambeth Council were going to knock down the 5 blocks of flats one by one, starting at the Frazier Street end. This would have meant that tenants living in the 2nd block would have had to suffer intolerable conditions of noise, dirt and rubble during the demolition as the doorways of these 2 blocks face each other.

PENSIONERS GO SOUTH

On Monday 18th June we left by coach from the Waterloo Action Centre at 9.45 am. We had a beautiful drive to Hastings through the Hop fields. It was a nice steady journey, no rush and we were able to see all the greenery and flowers and it was a beautiful drive.

It was a lovely day, we went for walks and a lot of us sat on the prom. The fish had just come in and some of us bought fresh fish very cheaply just off the boat - 10p for a whole plaice!

We stopped off at a pub on the way back and thoroughly enjoyed ourselves. We got back just before 10, all brown and sunburnt!



12 Meymott Street, SE1.
tel: 928-1643

SE1 is a community newspaper. This means it is run by local people who live or work in the area. It is non-profit making and no one gets paid (not even the pubs or newsagents which sell it).

If you have ideas, news or would like to help with producing the paper why not come to one of the meetings listed below where we sort out what will go in the next issue?

Meetings

MEETINGS Mondays 9th and 16th July at 7.30 pm.
LAST DAY for articles to go in the next issue is 16th July.
Stop press articles by 20th
HELP PREPARE THE PAPER It's great fun typing, thinking up headlines and gluing down the stories: the weekend of 21st and 22nd July, 11am to 7pm or whenever we finish.

The Tenants Association have had a number of meetings with Councillor Warburton, Chairperson of Housing Committee, but he would not agree to their request for the 2 blocks being demolished together.

The Tenants Association then carried out a survey to find out if tenants thought it was a good idea to have a 'buffer' block between the block being demolished and the block in which tenants live. The overwhelming majority of tenants agreed and signed a petition.

The petition was presented to the Housing Committee last Wednesday by Councillor Bryn Davies and a number of tenants went along to the meeting.

The tenants pointed out that all the tenants in the 1st block should have been moved out by now as demolition begins in September. But there are over 35 tenants waiting to be decanted in this block. Most of them want to stay in this area and Lambeth Council have not got any properties to offer them.

This is another vital reason why housing must be built on the Coin Street sites.

LOCAL PEOPLE OF SE1

Blackfriars Settlement needs more literacy tutors. It does not matter whether you are working class or middle class or whether you have A and B levels. All you need is to be able to read and write, and have the view that just because we can't read or write, we are not different from anybody else. Please come and find out about being a tutor, we need local people. We need your help.

Chris Bell, literacy student.

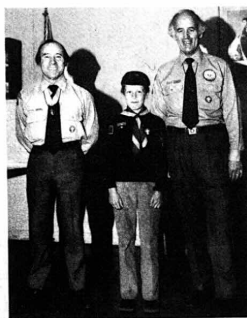
Get in touch with ERIC PYE or ALISON TOMLIN, Blackfriars Settlement Literacy Scheme, 44-47 Nelson Square, telephone 928 9521 or 261 1268.

TWO WORKERS ARE REQUIRED for a neighbourhood project which is run collectively. The project is using media as a way of developing and organising tenants' activities on a large estate.

JOB ONE: An Administrator - who should be interested in the activities of a project like ours.

JOB TWO: A Media Worker - who is required to work primarily in print, and should also have an interest in video and radio.

Local people are preferred.
CLOSING DATE: 16th July 1979.
FURTHER INFORMATION & APPLICATION FORMS FROM: Walworth & Aylesbury Community Arts Trust, Shop 8, Merrow Walk, Taplow, East Street, London SE 17 1UB.
TEL: 701 9010



Left to Right: Ian Giles, WILLIAM LONG, Ron Perry.

Matters Arising...

A NORTH-SOUTH FLYOVER at the junction of Blackfriars Road and Stamford Street is being considered by the GLC. In spite of the way the flyover will spoil the otherwise distinguished appearance of Blackfriars Bridge, the scheme is likely to get the go-ahead.

THE SOLARIUM in Grange Road, (see SE1 Issue No. 36) may be used partly as a museum of public health. This is the idea that is being explored by residents and organisations in Bermondsey co-ordinated by Edna Matheson of the Setchell Road Estate, close by the health centre.

5 ANGLICAN SCHOOLS may be merged into one in North Lambeth and North Southwark, the Coin Street Public Inquiry was told by a witness last week. This secret plan is being considered by Church authorities at the moment.

LIFESAVER!

A very important ceremony took place during the pack meeting of the 72 North & Central Lambeth Cub Scouts on Wed. June 6th.

The County Commissioner for Greater London South, Mr. Ian Giles, accompanied by our District Commissioner Mr. Ron Brydon, presented Cub William Long, 9, with the Chief Scout's Gallantry Award for saving a three year old boy from possible drowning after he had fallen into the Hotel swimming pool, while on holiday with his parents at Newquay, Cornwall, last year.

On the following Sunday, William was invited to a reception held at the Fort Dulwich, to meet other award winners, with William being the youngest scout to receive the Chief Scout's Gallantry Award.

WORKERS' EDUCATION

A Group of people in SE 1 & SE 11 have recently come together to improve the educational opportunities of working people. The group is called the WEA South Bank Group. They're planning classes and courses in local centres, to meet local interest and requests.

The South Bank Group is running a **SE 1 People's History Workshop**. It also plans classes in:

Individual Employment Protection Rights (for Trade Unionists).

Basic Economics for local workers.

Photography for Pensioners.

CONTACT: Peter Chester, Community Education Project, c/o Morley College, Westminster Bridge Rd., London SE 1. 928 8501

THEATRE OF LIES

YOU'LL FIND US VERY COMPETITIVE...



THEATRE OF LIES IS PART OF ELEPHANT JOBS AND IS A S.T.E.P. TRAINING PROJECT FOR YOUNG PEOPLE.

WE TAKE PUPPET SHOWS AND WORKSHOPS TO SCHOOLS, CLUBS, FESTIVALS ETC AND YOU PAY WHAT YOU CAN AFFORD

CONTACT ELEPHANT JOBS, 18 KING JAMES ST, SE1 0SA
633 0780



Has Paddington Bear strayed into Waterloo? No, this is our very own Waterloo Bear, scaring the crows on The Cut allotments.

Staff fight GLC threat to direct labour force

A lobby of the GLC councillors, called by the GLC Staff Association, attracted over 70% of the branch members, according to Peter Seares of the Staff Association executive committee.

The lobby on June 15th followed the announcement that the GLC construction branch would not be allowed to tender for any more work at all. This will mean a dramatically quick run-down of the service, putting over 800 people out of work.

The construction branch is part of the GLC's direct labour force: building workers employed directly by the Council rather than by private contractors.

Turn-out at the lobby was particularly good, considering that the Staff Association branch is scattered all over London.

Says Peter Seares: "It's been fairly clear to us for a couple of years or more that a climate has been created in which it is impossible for the Construction Branch to make a profit. Staffside submissions on how to make a profit have been systematically ignored. We're very suspicious of the way the whole thing has been done".

The moves form a part of the Tory plans nationally to 'prove' direct labour forces inefficient and then close them down. With chronic shortage of work in the building industry, they want to make sure all the profits go to the private builders.

Tricks have included such things as assessing the performance of the Construction Branch on figures that miss out payments still owed to them by the GLC itself!

Project even healthier

THE WATERLOO HEALTH PROJECT has now been guaranteed funding for the next 3 years from the Lambeth Inner City Partnership. The Association of Waterloo Groups now employs 2 full-time community health workers.

The second worker was appointed in April 1979 and her name is Monica Snldon. She can be found at the Waterloo Action Centre and will be writing about what she is doing in the next issue of SE1.

Playground gets about

Once again this year, the Waterloo Adventure Playground ran a Half-term Playscheme. The playleader reports:

The scheme started on the Tuesday, as Monday was a Bank Holiday. On Tuesday, the younger ones went on an outing to Greenwich Park, and the older ones went roller skating at Jubilee Hall in the afternoon. On Wednesday, at no cost, the children went to Hyde Park for the Festival of the International Year of the Child. On the Friday there was also an enjoyable visit to Stevenage, on which a total of 15 children went.

The week's entertainment ended with a party Saturday afternoon for the under-11s in which 15 attended; and a Disco for the older ones in the evening at the Action Centre. The disco was very good indeed, and goes under the name of S.T.K. and I would recommend them to any Youth Group within the circulation area of SE1 newspaper.



WATERLOO WOODY

Though it's not my birthday I'd like to follow ERII's lead and pay tribute to those who have done so much to our community of late.

Here's Woody's very own honours list - I'll deliver them from a great height as is the way with birds of my feather.

The Al Capone "I'm the Boss" Award to leader of Southwark Council, John O'Grady, for listening so well to public opinion on such matters as the New Town Hall.

The Athletics Award to Councillor Evelyn Ackroyd for her amazing queue jump into a Housing Association flat.

The Luftwaffe Memorial Award, for policies designed to change the face of London is shared by Horace Cutler, Shelagh Roberts and a cast of developers and speculators too numerous to mention.

The "I'm Alright Jack" Award goes to George Strauses, the recently retired Vauxhall MP of longstanding. Millionaire George, who has just been granted a peerage, has left his local Labour Party up the creek by putting up for sale their HQ, which he owns.

The Coin Street Inquiry (yawn!) has produced its own special brand of honours.

To Mr Inspector Williams, the Stiff Upper Lip Award, for carrying on with a straight face as if it all mattered.

Golden Truss Awards to the poor folk who have to lug around the tons of paper churned out.

Heineken Honours to Drinkwater QC of the GLC - his cross examination reaches the low parts other QCs can't reach.

And finally a wreath to the Tomb of the Idea of the Unknown Social Assessor - RIP.

W.W.



Seeva need more folks!



The Colombo Street Centre is to hold a grand children's party on July 21st, for over 100 Vietnamese children currently billeted at Kensington barracks, and for a similar number of local kids.

There'll be food, music, games and entertainments ... and YOUR HELP is needed to make the day go well.

An energetic bunch of people have already made a start, but more volunteers are needed to prepare the hall, make food, organise games, etc.

The party is aimed at kids around 5-13 - if you know any who might want to come, contact the Centre soon for a free ticket.

(Unfortunately there has to be a limit on numbers so as not to overcrowd the Hall. If any local kids miss out on tickets they'll be invited to another party in the near future.)

If you've got some spare time to lend a hand, or want a ticket, phone Bob or Jim at Colombo Street: 261 - 1659.

COIN STREET

show goes on

For the first 2 weeks the Inquiry ground on with the QC's happily calling the tune. Local frustration mounted at the way the rules of the game increasingly weighed against a full and fair hearing.

Finally patience was at an end. From the audience speaker after speaker called on the Inspector to take note of their demands and pay less heed to the QC's. But to no avail. One major request was that the Inspector call as a witness the GLC architect responsible for the original Coin Street housing plans ie. before the Tories took over and decided housing was not suitable on the sites.

The request was turned down as 'unnecessary'.

A second request was that someone be appointed to sit with the Inspector to advise him on the social and community aspects of the various proposals. After all, it was pointed out, he has housing and architectural advisors sitting with him, and social/community matters are at the heart of the whole Inquiry.

At first the Inspector said 'no' insisting that he could understand it all. If he felt he couldn't he would then call for expert help. After a lot of pressure he put the request to the Minister responsible at the Department of the Environ-



ment. He then turned it down - surprise, surprise! While this was going on out front, a rude shock was being engineered elsewhere.

The Department of the Environment granted one of the Inquiry applicants, Greycoats, an Office Development Permit for a completely different scheme for Coin Street... to include 1.3 million sq.ft. of offices!

If the Inquiry was to be as decisive as it was billed,

surely there should be an adjournment till the Greycoats plans were laid before it? No, said the Inspector, he could only deal with what the DoE decided to put in front of him.

Hardly had the Inquiry got underway again when another applicant pulled a surprise: Heron Corporation withdrew their plans with a public statement that was outrageous...and ominous.

The community was accused of unreasonably disrupting and delaying the Inquiry and Lambeth Council of playing politics! And Heron called for changes in the Inquiry system so as to get quicker decisions - who can doubt that there'll be friendly ears in Government listening to this?

And so the Inquiry moves on. As the weeks go by, the cost rises (how much is a QC's day worth?), the documents pile up (nearly 500 at the last count), and growing numbers of people wonder what it's all really about.

Below:
The Inspector, "What can I say?"



the players



Left: AWG's man - Hobson



Right: Layfield - Commercial Properties



PAPER POWER?

A Heron man spotted avidly reading our own SE1 - could it have been anything he read between the lines that prompted Heron's withdrawal?



Read - Lambeth



Dobry - Greycoats



Drinkwater - GLC



Boydell - Southwark

CORRECTION

CORRECTION

CORRECTION

CORRECTION

STOP PRESS

STOP PRESS

WATERLOO SCHOOLS.....WATERLOO SCHOOLS.....WATERLOO SCHOOLS

After the paper went to the printers, we learnt to our horror that the news printed on the front page is incorrect.

Far from St. Patrick's School and St. Andrews and St. John's School remaining open for the autumn term, the Government has just announced that the schools will NOT re-open after the summer holidays.

This means that after the months and months in which the decision could have been announced, teachers, parents and children have been given just four weeks warning of a decision which will affect all of their lives.

More on this next month. Meanwhile, for those who wish to send a personal protest to the Secretary of State for Education, Mark Carlisle, the address is:

Department of Education and Science,
Elizabeth House,
York Road,
SE1