



FUN IN THE SUN

THE SUN SHONE ON THE RIGHTeous for the 5th Waterloo Festival, which many local people reckon was the best ever! Waterloo's Lower Marsh Market area was packed with people enjoying the entertainment on Sunday July 8th.

The day started at 12.30 with a procession round the streets of Waterloo. The procession was led by the Rotherhithe Drum and Trumpet Band, accompanied by a very colourful float. There was also music from a steelband, clowns, and local kids in fancy dress.

There was a huge variety of entertainment to choose from at the Festival - outside the Waterloo Action Centre there were shows from

Morris Dancers and Majorettes from Greenwich. Theatre groups were performing all afternoon in various sites down Lower Marsh. Covent Garden Community Theatre Groups and Theatre of Marbles performed shows for kids which adults also greatly enjoyed. There was also the black humour of 'Thud's Creeping Sheep' show which went down very well.

Lower Marsh Market held nearly as many stalls as on a busy weekday - all run by local groups such as tenants associations, the Waterloo Women's Health Group. One of the most popular and topical stalls was run by the Coin Street Action Group. To win a prize you had to swing a ball & chain and knockdown models of office bcks, while missing wooden figures of GLC members George Tremlett, Horace Cutler and Shelagh Roberts. But SE1 residents weren't too disappointed when they hit the GLC members instead of the offices!

jumpin'g around

There was plenty going on at the Festival for kids - sports and games took place in Murphy Street with many kids winning prizes. Older and small kids also had a great time jumping around on the inflatable at Matheson Lang House.

Games for adults included the pub pram race - though the men proved themselves bad losers from the start by pelting the only women competitors with raw eggs and swadust at the beginning of the race!

WHAT'S INSIDE

Summer fun for kids page 4

EDGERS FLATS RENTS SET Page 3.

LIFE ON THE RIVER page 2.

TANSWELL TENANTS page 7.

NORTH LAMBETH DAY CENTRE page 6.



Indoor entertainment included music from 'Tinderbox' and a packed-out show by the very popular 'Young Uns', a group of youngsters who do an old tyme music hall show.

More music was provided by Alex O'Daly who mingled with the crowd playing his accordion.

Finally the Festival Committee would like to thank those who helped to make the Festival such a great success - particularly the local pubs and shops who made donations.



SE1 NEWSAGENT



OF THE MONTH

W.H. Potter, in The Cut, next door to the Young Vic Theatre, is one of the local newsagents on which SE1 depends for the distribution of the paper.

Bill Potter, pictured left with his daughter Janet, has been a newsagent all his life (apart from a spell in the army) Born in Baylis Road, where his mother kept a shop, he and his wife Norah moved to The Cut 20 years ago, from Westminster Bridge Road, where their previous shop was.

Thanks to all the Potters, from SE1!

YOUNG VIC

Goaded into activity by the reproaches from Young Vic Director Michael Bogdanov in his letter to SE1 which we printed last month, SE1 has been looking at what the Young Vic and its Education and Community Service is up to. This is what we've learnt so far.

The Young Vic Summer Festival has been running since June 30, and goes on to July 29. It's composed of street theatre, exhibitions and touring shows in the area. There have also been productions in the theatre at lunch times and in the evening. Many visiting theatre groups have taken part, including youth theatre groups. There have been practical workshops ranging from puppetry to circus techniques. There've also been

many shows from ethnic groups as part of the wider, London-based 'London Entertainers' Festival. This has included Indian dancing and various West Indian/Afro-Caribbean productions.

Now they've got more plans for this summer. Starting on August 1st until the end of the month they'll be touring with the Capital Radio Fun 'Bus round the playschemes with a short play and then games. The shows will start at 2pm every day and last 1½ hours. Contact your local playground/scheme to find out when they'll be with you.

A new venture for them is taking theatre into museums. At the Imperial War Museum they are putting on a 'play' called the Evacuees - except that there won't be any audience because the audience will be 'living' the experience of being an evacuee in the Second World War. This is for groups of up to 40 kids, and bookings should be made to the Imperial War Museum (tel 735 8922).

A new play for the Youth Theatre goes into rehearsal and will open on 1 September. It's called Marathon, and is about a dance marathon in depression America. It's based on the film 'They shoot horses, don't they?' and there'll be lots of music and song.

Books Publications, c/o 196 Cable Street, London E.1.

We reprint here two short extracts, to give the flavour of the book. Next month we hope to print a longer description of a journey by lighter from Nine Elms to the Tower of London.

LIFE ON THE RIVER

In 1935 Harry Harris, a Banksider who had spent his life working on the river, decided to record his memories in a notebook, and this record has now been published, thanks to his son Bob, who preserved his father's handwritten notebook,

Born in 1880 in Park Street, Bankside, he grew up along the river (and in it), and in due course became apprenticed as a 'lighterman'. Bob Harris, who is himself a 'lighterman', explains what this means in his introduction to the book:

'There were few tugs about; most of the transportation of goods up and down the River was done in lighters - dumb barges with a fixed rudder or 'budget' - able to carry from 15 to one hundred and twenty tons of cargo propelled by wind and tide and manned by lightermen, capable of rowing with oars up to thirty feet in length. This art of 'navigation, known as 'driving under oars', is possibly unique in Great Britain and requires great skill and knowledge of local conditions and tidal sets.

workhorses

A punt, no near relation to its Cam or Chervell namesake, with a registered tonnage of up to twenty-nine and three-quarter tons, was able to carry fifty tons of cargo and could be 'driven under oars' by one man. Built of wood, with flared sides to make them handy, these craft were slightly beamier forward than aft, hence the saying on the River 'where her head will go so will her stern'. These punts were the workhorses of the Edwardian Thames in the days of close-knit riverside communities at Wapping, Shadwell, Ratcliffe Cross, Limehouse and Blackwall on the North side, and Greenwich, Deptford, Horsaeydown, Battlebridge and Bankside on the South.'

and to the Centreprise publishing project in East London.

The book is beautifully illustrated by Albert Rolles, himself a retired lighterman. It is available, price 75p + postage, from Centreprise, c/o 136-138 Kingsland High St., London E.8., or from Stepney



A. Rolles 1911

"I was born on August 2nd 1880, the eldest son of Charles and Elizabeth Harris (nee Potkin).", the book begins.

"We children were seven: Florence Elizabeth, Harry Thomas, Alice Emily, Eva Louise, Charles Edward, Alfred John and Margaret Ellen (twins). Our home was 77 Park Street, Southwark, all the family being born there."

"There was no playground other than streets, our nearest green being St. James' Park. Our Sunday school treats were eagerly anticipated, a whole day on the grass in the country, or what was green fields then. Our chief attraction was Bankside. This was out of bounds to me and almost all children, owing to the unrestricted opportunities of getting 'overboard'. I soon learnt every inch of the Bank and knew where to hide when the tide was out and where to climb ashore other than the landing stairs if father was seen or reported. He had a way of inspecting one's shoes and could always tell by the mud or chalk adhering to them if I had been

'up the Bank'. One's shoes got perhaps more blacking on this account. With friends, chiefly some of Watermen and Lightermen, we soon made free of boats that were not actually in use, so naturally we became boat-minded at an early age."

swimming

"I managed to swim when ten years old, and, having the river and boats at our disposal, we would have wonderful times in and on the river after school hours in the summer. The best bathe was at low water, the river then being clear and fresh. We would undress on the shore and wallow in the clear river until the Thames Police were sighted, then scramble ashore trying to get a dry shirt over a wet body. I am sure now that being at home in the water is essential to any person working on craft or any waterside occupation. Several times I have been overboard, all except one, accidents. There are three occasions when swimming and keeping my head have saved my own life."

Bankside races

"Bankside Regatta was an annual event, and caused great local excitement, and partisan feeling ran higher than even at election time. I remember that once when a favourite was rowing third and passing close inshore against the tide off Barclay Perkins Wharf (Courages) empty beer barrels were flung at the leading sculler as a gentle hint to ease up. A brass band used to follow or attempt to follow the races, the band being seated on the top of a disused tram placed in a barge hold and towed behind a small tug. This towed barge could not keep up with the race, and when about half the course was completed he turned round and met the race as they, the rowers, returned, always arranging to be in at the finale to play 'See the conquering hero comes'.

O'GRADY SAYS 'PRAY!'

NO PARLIAMENTARY BILL

Southwark Council Leader, John O'Grady, who often behaves as if he thinks he is God, seems to believe that prayer is the answer to one of his problems - the Docklands Southern Relief Road.

O'Grady has written to Father Lowe of the Royal Foundation of St Katherine who is organising prayers against the Northern Relief Road. 'The letter concludes, "I hope therefore you would agree to include opposition to the Southern Relief Road in your prayers and particularly pray for the people who will live in the Silverlock and Pedworth Housing Estates". These estates will have homes only one metre from the road.

If this is to be O'Grady's strategy for opposing the road which the GLC wants to build from Bricklayers Arms through Bermondsey and Surrey Docks, it only confirms he is losing touch with reality.

Meanwhile the GLC have gone part-way to answering our leader's prayers. They've abandoned the idea of a Parliamentary Bill to push through their plans.

But they still want to make it difficult to oppose the road and are to ask the Government for special powers to curb the rights of public objectors in road inquiries. The powers will impose fixed time limits on inquiries and restrict the questioning of road schemes.

Mr. Alan Greengross, leader of the Planning Committee, said that public inquiries into planning matters have fallen into disrepute and are used as a delaying tactic. He appears confident the Government will support his attempt to limit public participation in planning even further.



OUR SE 1 REPORTER was surprised to see the North Southwark Community Development Group apparently branching out into the retail industry, at the Packham Gala Day. However, we're assured that washing powders and French wines are just side lines - planning will remain their 'bread-and-butter' issue for some time to come.

Can you afford £37 p.w. rent ?

THE NEWS THAT THE RENTS IN Southwark Council's Edgers Development on Bankside will range from £31 to £37 per week for the 110 one and two bedroom flats has come at a time when increasing doubts about the judgement of Planning Chairperson Watts and other champions of property speculation in Southwark Council are being aired.

LAVISH LOOS

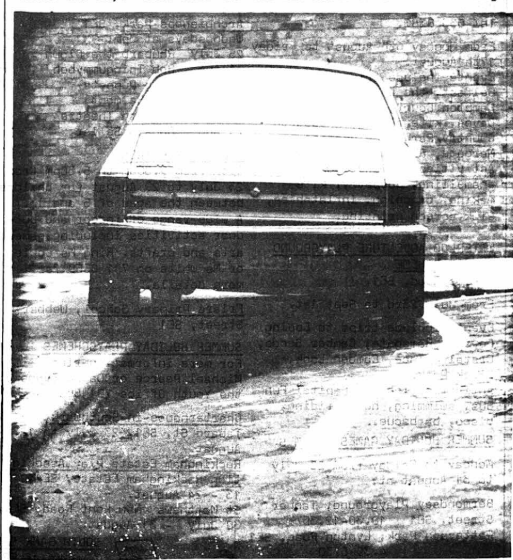
As well as having the highest rents in the borough, the Edgers development has many hidden costs. A lavish new public toilet has been built into the scheme and will have to be staffed. It is also planned to have a parks attendant to supervise the viewing platform on the riverfront though there are no plans to have an attendant on the 4 acre Mint Street Park which is due to start this year.

At the Council meeting in July local councillor George Nicholson, as well as asking the question which led to the revelation about the rents, also asked councillor Watts about another development in Cathedral Ward that is proving costly. The question concerned the Nettlefold and Moser site on the corner of Borough High Street and Marshalsea Road.

Last year the Council, in the face of massive opposition from the local community, gave planning permission for a speculative office on the site. In return for this scrap of land at the rear of the site was given to the Council. Unfortunately a warehouse stood on the site and it is estimated that it will cost £40,000 to lay out the 2 acre as an open space, the bulk of that for demolition of the warehouse.

CONSIDERATE PAINTERS

It looks like one SE 1 driver nearly had a yellow stripe down the middle of their car. However, a considerate line painter saved the day. What will the traffic wardens make of it though?



The Coin Street test of stamina

THE INQUIRY HAS NOW ADJOURNED for a summer recess until September 4th so this is a good opportunity to summarise what's gone on so far.

At the start there were three commercial companies involved with plans for a hotel and offices: Commercial Properties, Heron Corporation and Greycroats (the 2 latter vying for the same land). London Weekend also have plans to extend their existing building onto the adjoining site.

Four weeks into the inquiry Greycroats announced they had just got an Office Development Permit to cover all the sites with a mixture of offices and other commercial uses. They'd sacked their architect and hired instead Richard Rogers who has recently made a name for himself by designing a new arts complex in Paris (the Pompidou Centre).

EDITOR'S NOTE : I understand Waterloo Woody has had a strange encounter with this guy Richard Rogers. See page 8.

One week later Heron withdrew from the inquiry saying they couldn't afford to continue, having spent £100,000 so far. No doubt the real reason was because they felt they couldn't compete with Greycroats. Since we started on May 22nd four cases have been presented, Lambeth Council, the Association of Waterloo Groups, LWT and Commercial Properties who decided at the last moment not to call any witnesses so their case only lasted for one day. But they have NOT withdrawn as reported in the South London Press.

In September we will hear Southwark Council, Greycroats and the GLC, followed by the Coin Street Action Group and any other groups or individuals who wish to speak. Perhaps it will all be over by the end of October. Take a stamina test inquires.

Driver required

BLACKFRIARS SETTLEMENT WORK CENTRE, 14 Baylis Road, SE1. Driver required for Sheltered Work Centre. Approx 9-10.30am to collect members from their homes in ambulance. Person appointed needs to be sympathetic towards the needs of the disabled. GMMU rates. Apply Tony Wilton-Davies, tel 261 1404.

Playschemes

BLACKFRIARS SUMMER PLAYScheme
Pickwick Club, Pocock St, SE1
Contact: Geoff or Stella,
Tel 633 0383.

From Monday 6th August to Friday 17th August.
Events include trips to HMS Belfast, the London Dungeon, Hampton Court, Chislehurst Caves, kite flying, Knebworth Country Park, ice skating, Margate, Bluebell Railway. Activities include cookery, enamelling, puppetry, kite making, canoeing, inflatables, silk screen printing.

WATERLOO ADVENTURE PLAYGROUND SUMMER SCHEME
Baylis Road, SE1.

From July 23rd to Sept 1st.

Events include trips to Epping Forest, Ramsgate, Camber Sands, Crestal Palace, Camden Lock, Black Park.

Activities include Capital Fun Bus, swimming, horse riding, disco, barbecue.

SUMMER HOLIDAY GAMES SCHEMES

Monday to Friday from 23 July to 31 August at:

Bermundsey Playground, Tanner Street, SE1 10.30-12.30
Patterson Park, Lynton Road, SE1 4.30-6.30
Tabard Gardens, Tabard St, SE1 2.00-4.00

PLAY PARKS

Geraldine Mary Harmsworth Park, behind the Imperial War Museum, Lambeth Road, SE1.

Monday - Friday from 23 July to 31 August 10am to 6pm.

KIDS FUN AFTERNOON

Burgess Park Sat 4th August 12 noon to 6pm. Bands, clowns, fairground rides, balloons, zoo, fancydress competition. Contact Norman Sutherland on 633 1666.

CHILDREN'S EVENTS IN GLC PARKS

For further information ring 633 1707.

Archbishops Park, SE1

Wednesdays at 3pm:
25 July Rhubarb the Clown
1 Aug Bob Thimgummybop
8 Aug Brog Puppets
15 Aug Len Belmont
22 Aug Unicorn Theatre
29 Aug Donald Seller

ILEA PLAYCENTRES

Open from 9.30am to 5.30pm from 23 July to 29 August for children between the ages of 5 and 13. A wide range of indoor and outdoor activities including games, arts and crafts. Ring Ms Cowie or Ms White on 701 8559 for more details.

Friars Primary School, Webber Street, SE1

SUMMER HOLIDAY PLAYSchemes

For more information ring Michael Pearce or David Evans at the Youth Office 701 8559.

Charterhouse-in-Southwark

Tabard St, SE1. 23 July to 10 August.

Rockingham Estate Play Association

Rockingham Estate, SE1. 13 - 24 August
St Matthews New Kent Road, SE1. 30 July - 31 August.



SOUTH BANK SPLASH

7 weeks of FREE daily outdoor events on the National Theatre South Bank Terrace, July 15 to September 1st.
Young Vic Summer Festival, Camden Playmakers, Incubus Theatre Co, The Phantom Captain, Impressions of Africa, music, dance and more.

MINT STREET ADVENTURE PLAYGROUND

PLAYSCHEME Mint St, SE1. From 22nd July to 2nd Sept. Outings, swimming, kite making, camping, photography, inter-play scheme sports, theatre.

LAMBETH PLAYSchemes

Information leaflets available from local libraries (except when we need one!)

CHESSINGTON ZOO

Leatherhead Road, Chessington, Surrey. Telephone: 78 27227

HOW TO GET THERE

By Road: From London on A3 turn at Kingston Underpass on to A243 (between Surbiton and Leatherhead).
By Bus: 65, 265, Green Line 714.
By Rail: Waterloo to Chessington South (10 minutes walk or bus from station)
Open: March to October daily 10.00 to 5.00 p.m. November to February daily 10.00 a.m. to 4.00 p.m.

ADMISSION: Easter-September Adults £1.30p children 80p (5-13 years). Parties of 20 or more Adults 80p, children 45p (1 adult free with every 20 children). Childrens Zoo free. Winter reduced rates (when funfair closed).

GENERAL INFORMATION
Chessington Zoo is set in 65 acres of countryside and was first opened to the public in 1931. There are hundreds of animals and birds in the Zoo and a variety of entertainments and picnic areas.

SPECIAL ATTRACTIONS

Animal Feeding Times: Every hour on the hour from 11.00 a.m. to 4.00 p.m. Details displayed at entrance.
Children's Zoo: Admission free. Contains domestic animals such as Shetland Ponies, goats, donkeys, rabbits, lambs, chickens, birds and pigs. There are bunny, pig and mouse villages.
Fairy Funfair: Miniature Train rides, Ghost Train, Boating Lake, Diddies, and many other attractions.

Circus: Afternoon performances lasting 1 hour Adult 40p, child 30p to 12th Sept. Easter week, weekends until 28th May then daily 9th September.

Free Amusements: Slides, swings etc.
Refreshments: Licensed Grill and snacks and ice available at Kiosks and self service Cafeteria. Restaurant service in Marston. Puddings may be hired for 20p.
Zoo Guides: 30p.
Car Parks: Free.

ELEPHANT AND CASTLE RECREATION CENTRE

The Elephant and Castle Recreation Centre consists of a recreation pool and a sports complex joined together by a link block. It is situated at the Elephant and Castle roundabout, facing the shopping centre.
The leisure pool comprises a large shallow water area, wave making machine and slide and a children's splash pool with its own pink elephant slide in a tropical atmosphere. There is also a teaching pool and cafeteria.

OPENING TIMES
Seven days a week. Opening hours of individual facilities:

The Pool: 9.00 a.m. - 9 p.m. the pool to be cleared by 9.30 p.m., closed at 10 p.m. Schools during week-day term time, 9.00 a.m. - 12 noon, and 2.4 p.m.

Sports Hall: Opening at 10.00 a.m. to the general public. Close 10 a.m. Cleared by 10.30 p.m. Open for Schools only at 9.00 a.m.

Squash courts open at 8.00 a.m. Squash: 10p per person, adult or child in addition to the following charges

Sports Hall: Badminton, per court per hour £1.50

Table Tennis: £1.50 per hour (per court)

Basket Ball, Hockey, 5-a-side Football, etc. (1/2 hour per person) £6.00

Swimming: £1.50 per hour (per person)

Swimming: £0.40 per hour (per person)

Swimming: £0.40 per hour (per person)

Swimming: £0.40 per hour (per person)

Swimming: £0.40 per hour (per person)

Swimming: £0.40 per hour (per person)

Swimming: £0.40 per hour (per person)

Swimming: £0.40 per hour (per person)

Swimming: £0.40 per hour (per person)

Swimming: £0.40 per hour (per person)

Swimming: £0.40 per hour (per person)

Swimming: £0.40 per hour (per person)

Swimming: £0.40 per hour (per person)

Swimming: £0.40 per hour (per person)

Swimming: £0.40 per hour (per person)

Swimming: £0.40 per hour (per person)

Swimming: £0.40 per hour (per person)

Swimming: £0.40 per hour (per person)

Swimming: £0.40 per hour (per person)

Swimming: £0.40 per hour (per person)

Swimming: £0.40 per hour (per person)

Swimming: £0.40 per hour (per person)

Swimming: £0.40 per hour (per person)

Swimming: £0.40 per hour (per person)

Swimming: £0.40 per hour (per person)

Swimming: £0.40 per hour (per person)

Swimming: £0.40 per hour (per person)

Swimming: £0.40 per hour (per person)

Swimming: £0.40 per hour (per person)

Swimming: £0.40 per hour (per person)

Swimming: £0.40 per hour (per person)

Swimming: £0.40 per hour (per person)

Swimming: £0.40 per hour (per person)

SAILING/CANOEING

The Surrey Docks Sailing Centre
Greenland Docks.

For further information on any of these activities ring the Information Service at Peckham Town Hall 703 6311.

THE OASIS
167 High Holborn, London WC2
Telephone: 838 3771
Indoor and Outdoor Pools
OPEN:

Monday-Friday: Indoor 9.00-18.45
Outdoor 9.00-19.45

Saturday: Indoor and Outdoor 9.00-16.45

Sunday: Indoor and Outdoor 9.00-17.45

ADMISSION: Adults 40p

Children 12p weekdays, 14p weekends

Weekend family tickets: £1 for 2 adults and up to 4 children, 10p towel hire

Swimming ticket is given at this pool on Tuesdays and Thursdays between 16.30-18.00 and costs 55p and 15 minutes plus entrance

Swimming: £0.40 per hour (per person)

Swimming: £0.40 per hour (per person)

Swimming: £0.40 per hour (per person)

Swimming: £0.40 per hour (per person)

Swimming: £0.40 per hour (per person)

Swimming: £0.40 per hour (per person)

Swimming: £0.40 per hour (per person)

Swimming: £0.40 per hour (per person)

Swimming: £0.40 per hour (per person)

Swimming: £0.40 per hour (per person)

Swimming: £0.40 per hour (per person)

Swimming: £0.40 per hour (per person)

Swimming: £0.40 per hour (per person)

Swimming: £0.40 per hour (per person)

Swimming: £0.40 per hour (per person)

Swimming: £0.40 per hour (per person)

Swimming: £0.40 per hour (per person)

Swimming: £0.40 per hour (per person)

Swimming: £0.40 per hour (per person)

Swimming: £0.40 per hour (per person)

Swimming: £0.40 per hour (per person)

Swimming: £0.40 per hour (per person)

Swimming: £0.40 per hour (per person)

Swimming: £0.40 per hour (per person)

Swimming: £0.40 per hour (per person)

Swimming: £0.40 per hour (per person)

Swimming: £0.40 per hour (per person)

Swimming: £0.40 per hour (per person)

Swimming: £0.40 per hour (per person)

Swimming: £0.40 per hour (per person)

Swimming: £0.40 per hour (per person)

Swimming: £0.40 per hour (per person)

Swimming: £0.40 per hour (per person)

Parks

BATTERSEA PARK
Sun Gate, Albert Bridge Road, London SW11
Telephone: 01-228 2788

Nearest Buses: 19, 19A, 39, 39A, 44, 45, 49, 137, 170, 248.

British Rail: Southern Region; Battersea Park, Queen's Road, Battersea.

GENERAL INFORMATION: The park covers over 200 acres and offers all kinds of facilities and activities. There is a boating lake where boats can be hired for 55p per hour (50p deposit), or where you can fish or just feed the ducks. You can play tennis, football, cricket, hockey, netball, etc. There is also a paddling pool and play park, a deer enclosure, a dolphinarium, and a miniature railway.

Open: Festival Gardens, Boating Lake, Play Park - All day, 10 o'clock Club, Playing Fields and Gardens - every day from 9.00 Pm rides 5p.

NOTE: The Fun Fair has closed down.

SPECIAL ACTIVITIES:
Battersea Park Children's Zoo
Open 11.00-18.00 school holidays.

ADMISSION FREE
South London Carnival
Saturday 11th and Sunday 12th August.

Children's shows (play park, Surtees) Mondays at 11am:
8 August Brog Puppets
13 August Common School
13 August Clowns Cavalcade
20 August Terry Buggs
27 August Unicorn Theatre

Friday at 11am:
31 August Melville's Puppets
Country Dancing: Wed, 25 July, 7.30pm.

GREENWICH PARK

London, SE10. Telephone: 01-858 1969
Nearest Buses: 53, 54, 75, 177, 180A, 185.
Nearest Tube: Surrey Docks (Metropolitan Line), then buses 1A, 70, 108B, 188.
British Rail: (Southern Region) Maze Hill, Greenwich or Blackheath.

Open: 07.00-08.00.

HISTORICAL AND GENERAL INFORMATION:

Greenwich Park is a highly individual park. A tiny hill shaded with massive sweet chestnut trees overlooking the Thames and the vast expanse of London.

Open: Festival Gardens, Boating Lake, Play Park - All day, 10 o'clock Club, Playing Fields and Gardens - every day from 9.00 Pm rides 5p.

NOTE: The Fun Fair has closed down.

SPECIAL ACTIVITIES:
Battersea Park Children's Zoo
Open 11.00-18.00 school holidays.

ADMISSION FREE
South London Carnival
Saturday 11th and Sunday 12th August.

Children's shows (play park, Surtees) Mondays at 11am:
8 August Brog Puppets
13 August Common School
13 August Clowns Cavalcade
20 August Terry Buggs
27 August Unicorn Theatre

Friday at 11am:
31 August Melville's Puppets
Country Dancing: Wed, 25 July, 7.30pm.

ADMISSION FREE
South London Carnival
Saturday 11th and Sunday 12th August.

Children's shows (play park, Surtees) Mondays at 11am:
8 August Brog Puppets
13 August Common School
13 August Clowns Cavalcade
20 August Terry Buggs
27 August Unicorn Theatre

Friday at 11am:
31 August Melville's Puppets
Country Dancing: Wed, 25 July, 7.30pm.

ADMISSION FREE
South London Carnival
Saturday 11th and Sunday 12th August.

Children's shows (play park, Surtees) Mondays at 11am:
8 August Brog Puppets
13 August Common School
13 August Clowns Cavalcade
20 August Terry Buggs
27 August Unicorn Theatre

Friday at 11am:
31 August Melville's Puppets
Country Dancing: Wed, 25 July, 7.30pm.

ADMISSION FREE
South London Carnival
Saturday 11th and Sunday 12th August.

Children's shows (play park, Surtees) Mondays at 11am:
8 August Brog Puppets
13 August Common School
13 August Clowns Cavalcade
20 August Terry Buggs
27 August Unicorn Theatre

Friday at 11am:
31 August Melville's Puppets
Country Dancing: Wed, 25 July, 7.30pm.

ADMISSION FREE
South London Carnival
Saturday 11th and Sunday 12th August.

Children's shows (play park, Surtees) Mondays at 11am:
8 August Brog Puppets
13 August Common School
13 August Clowns Cavalcade
20 August Terry Buggs
27 August Unicorn Theatre

Friday at 11am:
31 August Melville's Puppets
Country Dancing: Wed, 25 July, 7.30pm.

ADMISSION FREE
South London Carnival
Saturday 11th and Sunday 12th August.

Children's shows (play park, Surtees) Mondays at 11am:
8 August Brog Puppets
13 August Common School
13 August Clowns Cavalcade
20 August Terry Buggs
27 August Unicorn Theatre

Friday at 11am:
31 August Melville's Puppets
Country Dancing: Wed, 25 July, 7.30pm.

ADMISSION FREE
South London Carnival
Saturday 11th and Sunday 12th August.

Children's shows (play park, Surtees) Mondays at 11am:
8 August Brog Puppets
13 August Common School
13 August Clowns Cavalcade
20 August Terry Buggs
27 August Unicorn Theatre

Friday at 11am:
31 August Melville's Puppets
Country Dancing: Wed, 25 July, 7.30pm.

ADMISSION FREE
South London Carnival
Saturday 11th and Sunday 12th August.

Children's shows (play park, Surtees) Mondays at 11am:
8 August Brog Puppets
13 August Common School
13 August Clowns Cavalcade
20 August Terry Buggs
27 August Unicorn Theatre

Friday at 11am:
31 August Melville's Puppets
Country Dancing: Wed, 25 July, 7.30pm.

ADMISSION FREE
South London Carnival
Saturday 11th and Sunday 12th August.

Children's shows (play park, Surtees) Mondays at 11am:
8 August Brog Puppets
13 August Common School
13 August Clowns Cavalcade
20 August Terry Buggs
27 August Unicorn Theatre

Friday at 11am:
31 August Melville's Puppets
Country Dancing: Wed, 25 July, 7.30pm.

ADMISSION FREE
South London Carnival
Saturday 11th and Sunday 12th August.

Children's shows (play park, Surtees) Mondays at 11am:
8 August Brog Puppets
13 August Common School
13 August Clowns Cavalcade
20 August Terry Buggs
27 August Unicorn Theatre

Friday at 11am:
31 August Melville's Puppets
Country Dancing: Wed, 25 July, 7.30pm.

ADMISSION FREE
South London Carnival
Saturday 11th and Sunday 12th August.

Children's shows (play park, Surtees) Mondays at 11am:
8 August Brog Puppets
13 August Common School
13 August Clowns Cavalcade
20 August Terry Buggs
27 August Unicorn Theatre

Friday at 11am:
31 August Melville's Puppets
Country Dancing: Wed, 25 July, 7.30pm.

ADMISSION FREE
South London Carnival
Saturday 11th and Sunday 12th August.

Children's shows (play park, Surtees) Mondays at 11am:
8 August Brog Puppets
13 August Common School
13 August Clowns Cavalcade
20 August Terry Buggs
27 August Unicorn Theatre

Friday at 11am:
31 August Melville's Puppets
Country Dancing: Wed, 25 July, 7.30pm.

ADMISSION FREE
South London Carnival
Saturday 11th and Sunday 12th August.

SCHOOLS APOLOGY

SE1 would like to apologise to readers, particularly in the Waterloo area, for the error on last month's front page, with regard to the future of the schools. We had been led to believe that the decision on the schools had been left so late by the Government, that it would be impossible at that stage to close the schools at the end of this term.

In fact, the Development Subcommittee of the Inner London Education Authority did call for a report on how difficult it would be to find alternative schools for the children and other jobs for the staff at the two schools.

The officers reported that 'there is more than sufficient spare capacity' at other local schools for the children; and that as for staff, 'at least one offer has been made to each teacher' (we don't know how good these offers are), while 'only two of the remaining non-teaching staff remain to be settled, and it is likely that suitable positions will be found at County Hall or a nearby school'.

The officers concluded that there was no way in law that the Education Authority could prevent the closure of the schools - even if it wanted to.

'NO' TO ELEPHANT TOWN HALL

The GLC has said no to Southwark Council's bid to build its new town hall on an empty site at the Elephant.

NORTH LAMBETH DAY CENTRE NOW OPEN

If you've spent years losing confidence in yourself until you aren't tackle any of the tasks of living that the rest of us take for granted, like a steady job, a home, cleaning, cooking or chatting with friends in the pub, then somewhere like the North Lambeth Day Centre is the place to help you start coping with life again.

The Day Centre, newly installed in the Royal Waterloo Hospital by Waterloo Bridge, has been open since the beginning of July. It's open to help the single homeless - doers - develop their own strengths to get out of the 'down and out' way of life. What's different about this centre is not just that it is one of very few in the country, it also aims to help people without lecturing or forcing them. That process of gaining confidence in yourself has to start by gaining confidence in the Centre and the people who work there.

Troubled past

The History of the Centre has been difficult. The first attempt to open it at Roadside House in Cornwall Road in 1974 led to one of the largest and certainly the angriest public protest meetings seen in Waterloo for a long time. The promoters of the project, the South East London Consortium, had underestimated the strength of feeling about doers in the area. They withdrew their plans and looked elsewhere. In June 1977, they found a temporary site next to the Marmite factory in Vauxhall which they had to leave in March this year. Meanwhile they had investigated the possibility of the new Royal Waterloo but this time they made sure of getting the support of local groups including the Association of Waterloo Groups and local tenants' associations. Of course there are still doubts in some minds but people are beginning to realise that they have to face up to the issue of the single homeless, and a positive effort like the Day Centre is the only way.

A programme of structured rehabilitation, as director Danny Levine calls it, has been prepared for September. This has five main sections: Health - physical & mental; personal living with others - cooking, sewing, minor repairs; living with others - social and work situations; community - getting to know an area, the people and joining in activities; information - welfare rights & housing.

WATERLOO HEALTH PROJECT

Become an expert in First Aid

Would you know what to do if confronted with an accident, even a minor one? How would you deal with a scalded hand or a sprained ankle? If you'd like to learn from the experts how to cope come along to a First Aid course run by the St John's Ambulance brigade at Colombo Sports and Community Centre (off Blackfriars Rd., SE1). There will be ten classes each on a different first aid topic, there will be cadets to practice on and an exam at the end of the course. If you pass you'll get a recognised St John's Ambulance Brigade certificate. The course starts on Monday 10th September at 7.30. For further details, phone Waterloo Action Centre 261 1404 and ask for Monica Selden.

NEW WORKER FOR HEALTH PROJECT

The appointment of a second worker, Monica Selden, by the Waterloo Health Project, has not alleviated the enormous pressure of work on Jane Miller, but has made it possible for new needs to be met. The above items give you some idea of the things the project is doing. If you would like to find out more about the work of the project, give us a ring at Waterloo Action Centre, 261 1404.

Are you a single parent?

Perhaps you are on your own with the kids or you know someone who is. A number of single parents in the area have got together to form a social club. We meet every Friday in Flat 4, Santley House, Frazier Street, SE1. The next meeting is Friday 7th September at 7 pm. There's a crèche for the children with orange and biscuits provided, and the parents get together for a chat or maybe there's a pub evening. Perhaps you saw an ad in the Festival where some excellent jumble bargains were to be had. Our kids organised their own events as well, a sand game and a sweets competition. Various events are planned for September, including a party with free wine! Also look out for our mammoth jumble planned for the evening of 28th September. If you're on your own and would like to come along and join us, phone Rose 928 9546 for details.

Health Evidence

Expect many of you know that lots of local people turned up to see the evening sessions of the Coin Street Enquiry to give evidence against the proposed commercial development and in support of the plans for housing. The Waterloo Health Project got together a number of people from the area with experience in various fields of medicine willing to reinforce the case for housing. Four have already been able to present their evidence and demonstrate the importance of the link between health and the environment while six others hope to speak during the autumn session. Speakers include representatives from the Community Health Council, the Waterloo Health Project, a health visitor and a number of GPs, a paediatrician and a lecturer in community medicine. We feel their contribution will be a valuable one.



The facilities in the Centre are impressive - a library, health care room, meeting room, games room, workshop, print room, craft room and kitchen. When you enter the building and walk down the stairs you come into a long wide corridor with tables, chairs, notices, and posters. It's an area where you can relax, have a cup of tea and not be pressurised into doing anything.

Improved lives

In the old premises in Vauxhall the Centre coped with 30-40 people a day. So far in the new place they are getting 15-20. Danny Levine said they are getting different people now and there is not much evidence that men are travelling from outside the area. A place like Waterloo with a mainline station and cheap lodging houses builds up its own community of the homeless.

The staff of the Day Centre are sensitive to the feelings of the people in Waterloo about 'doers'. They are making the first positive step to help them improve their lives and so improve life in Waterloo. They deserve the positive support of local people.



12 Meymott Street, SE1.
tel: 928 1643

SE1 is a community newspaper. This means it is run by local people who live or work in the area. It is non-profit making and no one gets paid (not even the pubs or newspapers which sell it).

If you have ideas, news or would like to help with producing the paper you not come to one of the meetings listed below.

MEETINGS Mondays 6th and 13th of August.

LAST DAY for articles to go in the next issue is 13th August.

HELP PREPARE THE PAPER. It's a great fun typing, thinking up stories and gluing down the headlines: the weekend of 18th and 19th August, 11am till we finish - stay for as long as you have time.

Support Your Local Shop

OPEN UNTIL 8pm Monday - Friday
7pm Saturday
1pm Sunday

- * Fresh milk daily
- * Frozen foods
- * All groceries and provisions
- * Wines, spirits & beers
- * Newspapers
- * Confectionery & tobacco
- * Hot snacks, rolls and sandwiches to take away

THOS E. DAVIES & CO (TOMS)

137 Southwark Bridge Road, SE1



PAKEMAN HOUSE TIRED OF WAITING

PAKEMAN HOUSE IS Southwark Area 1's only Day Centre for the Elderly. It covers the Elephant and Castle as well as most of SE1. A lot of people who use the centre are local to the area and have lived and worked around the borough all their lives. It's a pity Southwark doesn't care that much about them since Pakeman House is fraught with problems.

Nine years ago the Day Centre opened as a temporary building with a two year lease. By that time a new centre had been promised - they are still waiting. The building was originally a children's welfare clinic and consequently has all the architectural problems which buildings not designed for the elderly or handicapped could have.

The toilets are tiny and cramped, for someone in a wheel chair this presents a dreadful problem. The Centre social worker has constantly informed Southwark of the fears she has if a fire were to break out and for that reason she is forced to keep the numbers well below capacity.

For the elderly of North Southwark the Council has no plans for the foreseeable future for changing their situation and for an area which has so many elderly who are house-bound there is little hope for change.

So for the few privileged members, the cramped conditions and damp don't seem so bad - after all they are the ones who have a chance to get out. Some members remember Pakeman when it was full of people and they did lots of crafts and had a good time, but as old members have died and new referrals are not replaced to the same extent the Centre is a different place now.

It's a pity, one of the old people remarked, that Banksaid can't be used to build day centres and sheltered housing for the elderly rather than the large office blocks that they expect to see.

TOOLEY STREET T.A.

Following a very successful Jumble, it was decided to end our summer session with a cheese and wine social evening. To enhance the proceedings, we covered the walls with beautiful pictures painted by our own members.

Shirley our treasurer, who only started art classes last year, surprised us all - she's not just a good treasurer!!! Over a hundred exhibits from seven members, not least of these was Mrs. Williams of St. Johns estate who came with exhibits ranging from lace making, dress making, millinery etc.

What talents there are in Tooley St.!!! - Not forgetting Barbara our new Social Sec. who single handed, put on a spread

the like of which had not been seen before.

THANKS BARBARA! We also have the ability to express our demands for the area, we are tired of dereliction and decay and demand an area fit to house people with such talent, an area that will encourage others to develop their own latent talent.

Houses with gardens, pavements fit to walk on, decent schools and play areas for our kids, and above all jobs.

To this end we will join any MEANINGFUL CONSULTATION.

Forthcoming attractions - the Autumn programme:

SEPT.4th: Crime Prevention!!

OCT.4th: Fire Prevention!!

- What next? Floods ???

TANSWELL TENANTS

A meeting was held on Monday 16th July at No 4 Santley House between Vauxhall M.P. Stuart Holland, Don Everson (local Labour Party Chairman) Gareth Hunter (local Lambeth Branch secretary), Mr. Hugh Edwards, the Environmental Health Officer, and representatives from local GLC tenants' associations, including Munro Action Group, Tanswell Action Group, and Kennington Park T.A.

The first remark Mr. Holland did make was to say that when he first became Parliamentary Candidate for the area two years ago, he visited Tanswell Estate and Campbell Buildings and he had never seen anything like it before - and we all know how bad it has got since then don't we.

Question No 1 was that there is a Parliamentary Bill for local councils to take over GLC flats, and did Mr. Holland know when that would be. He said he didn't know, but all it would take would be one Act of Parliament, and one signature by Mr. Heseltine at the Dept. of the Environment.

It was also asked if there would be sufficient funds given to Lambeth Council, if they took the flats over, for modernisation. Mr. Holland said it was possible, but not probable as the Tories are not inclined to give. Usually local councils get 4 - 5% increase in funds, but there is going to be 4% cuts during the next year.

Health hazards

Mr. Hugh Edwards, the Environmental Health Officer, asked what would happen to the health hazards when the cuts came about and was told that he would probably find himself having to work out the jobs to be done in order of importance. All sorts of diseases could crop up, because there wouldn't be the money available to deal with all the problems.

Repairs and maintenance are non-existent, or almost, due to the running down of the GLC Works Dept., with people having

to wait three months for window repairs. Refuse chutes are never cleaned, the doors are hanging off, and the Environmental Health Officer said he is called in about every two weeks about blocked drains.

The package improvement programme is taking a long time. The Tanswell Tenants Association had a meeting in February and were told that the baths would all be put in by April and the improvements finished by the end of the year - well it does not look as if it will even be finished by April next year.

Tenants Charter

Mr. Holland said that what he and others had in mind was what is called a Tenants' Charter, whereby tenants would have direct control over routine repairs and a large say in maintenance. How it would work would be for a sum of money, say £50,000 - £80,000 to be held in hand for the tenants, then a set time allocated for the completion of repairs from the time they were reported. If the jobs weren't finished then, they could be done privately and the bill sent to the GLC to be taken from the money in hand. The trouble is, it is difficult to work out how tenants can be given control, and lots of discussion is needed. There is the fact that the GLC is run by the Tories, and this is a Labour idea.

SID'S MESSAGE

NO NEWS is not good news - that was the message of Southwark's new Community Relations Officer Thomas ('Sid') Hercules at a recent public meeting.

He told an audience of about 60 people that a lack of publicity hid the true facts about Southwark's black population - in areas like education and youth-police relations there are major problems similar to those widely acknowledged in neighbouring boroughs.

The meeting, chaired by Mayor Peter Cather, was called by Southwark Council for Community relations as part of a drive for membership among local organisations and individuals.

It's the first step of a concerted effort to spread wider awareness of the problems facing ethnic minorities and the need for action to tackle them.

BOROUGH COMMUNITY CENTRE

56 SOUTHWARK BRIDGE ROAD, SE1.

LARGE HALLS: SOCIALS £25 (youth clubs £15), WEDDINGS £30, MEETINGS £15, OTHER BOOKINGS £5 per hr. (£3 locals). SMALL ROOMS £1.50 per hr. (queries? then phone up for rates)

2 HALLS FOR HIRE + SMALLER MEETING ROOMS + KITCHEN
BOOKINGS TAKEN FOR SOCIALS, WEDDINGS, MEETINGS, DANCES, CONFERENCES, JUMBLE SALES.

JUDO CLASSES START IN AUGUST - EVERY MONDAY 928.8165 day
STARTING 5.30pm. CHILDREN FROM 8 to 16. 407.6542 evening.



WATERLOO WOODY

Ever since my friends at SE1 wrote that big article about 'distrainment' on their front page a couple of issues ago, Southwark's Housing boss Charlie Sawyer has become quite a celebrity.

The other day I even flew into him at the BBC! Nationwide wanted to know what he thought about being called a 'medieval bulley-boy', due to his 'your-money-or-your-furniture' rent arrears policy.

He told me afterwards while we were sharing a friendly chew on a tree trunk, he didn't know what they meant by 'medieval'. He reckons his methods of bulleying are much more up-to-date than that.

He didn't think much of the rest of the booklet in which this inaccurate statement was made either. Apparently it's been written by a bunch of trouble-makers in Southwark's Tenants' Organisation and Rights Umbrella Group.

It purports to show that Southwark's rent arrears problem is less serious than almost any other London Borough, and that the figures the Council uses are grossly misleading. 'Seize their type-writer, Charlie, it's the only way', I advised him.

* * * * *

A few weeks back I spotted some local folk load themselves and some signs into a van and head north. Looked like a party, so I followed.

Well, we did end up at a party, but we weren't exactly on the invitation list. It was a fancy do at the offices of Richard Rogers. He's the Trendy Great Architect who's designing Something Special for would-be Coin Street developers Grey-coats.

The folks going in stepped straight out of some of the colour glossies they flog at Smiths on Waterloo Station. Amongst the people not going in was a young local resident who told me that the site of Rogers' place was originally promised to local people as a sports cent centre. I nodded sympathetically, told her our story, and she picked up one of our placards and joined in.

Rogers kept popping out to us with bottles of wine and said he is really a good guy and his Project is part of God's Plan for Waterloo. I began to feel unwell and took the first current of air home.



THE COLOMBO ST CENTRE played host to a Grand Kids Party for 60 Vietnamese refugee children and about 140 local kids. And what a great party it was! Food & drink, cartoons, clowns, inflatables, presents and more kept them all very, very busy.



STRIKERS' CLEAN-UP OFFER

Local workers on strike have offered to give some of their time and energy to help out in the local community, and have suggested as a start that they clear up the surrounds of the allotment site in the Cut (see last month's SE1). Steve Kippin one of the strikers, said they had had promises from about 30 of their fellow-workers to help during their lunchbreaks.

The offer comes from members of staff at the Laboratory of the Government Chemist in Stamford Street, who have joined the national campaign of non-co-operation and selective strikes by scientists and professional and technology officers organised by their union, the Institution of Professional Civil Servants.

The action is against the Civil Service Department, and is the result of the derisory pay offer made to professional civil servants in comparison with the settlement reached for administrative grades. Although the pay of scientists has been settled, members of the science category are continuing to support their professional and technology group colleagues whose pay has still not been

settled.

The Laboratory of the Government Chemist, which carries out chemical analyses for government departments, occupies part of Cornwall House, Stamford Street. Five members of the Institution of Professional Civil Servants employed at the Laboratory have been called out on selective strike action and have been picketing the loading bay. Their action has effectively halted all deliveries of supplied and samples to the Laboratory.

The pickets are allowing in samples that could affect the health and safety of the public and the action is concentrated against the machinery of government. Inside the Laboratory, those staff members not on strike are operating a campaign of non-co-operation, and this will continue until a satisfactory settlement is reached.

SE1 welcomes such a display of support for local residents and their needs from workers in the area. There is far too little contact between one and the other. We should all be far stronger if workers and resident groups could support each other more actively.



Secrecy rules

"NEW RULES RESTRICT DISCUSSION IN SECRET" is the misleading headline to an article in the latest 'Southwark Civic News' - DON'T BELIEVE IT.

In one of the most original pieces of manipulation even for Southwark, at the same time that all committees were being circulated with new rules with what should or should not be confidential, the Labour Group was hatching a plot to bar councillors from one of the key committees on the Council.

Last year by 21 votes to 20 the Labour Group decided to allow councillors to attend the Policy and Resources committee. Up until then only Chairmen of Committees, the leader of the Council and 3 backbench members could attend. As its name implies it is the key committee for deciding where the Council's money is spent.

For the first time, then, all councillors could get vital information not previously available and also listen to the discussion in the committee. But the leadership did not like their precious status interfered with in this way and lost no time in trying to reverse the earlier decision. Their opportunity came when 11 members of the Labour Group were expelled over the new town hall issue and it came as no surprise when, shortly after their expulsion the matter was "reviewed". In Southwark this means that a handful of people reverse a decision and now the P & R Committee is closed again.

To have the nerve to print in the Civic News that the same P & R Committee have decided that "everything should appear on the open section of agendas unless there are very good reasons", is to say the least a bit of a cheek.

Southwark expenditure review

SOUTHWARK IS AT PRESENT undertaking a review of expenditure which could mean cuts in services of up to 3% this year and anything up to 7% next year depending on what the Government wants them to do and what councillors in Southwark decide they will do.

What is a 3% cut? Taking it committee by committee it works out to:

Libraries and Amenities	£240,000
Housing	£380,000
Highways	£300,000
Planning	£180,000
Social Services	£600,000
Total	£1,700,000

The total figure is almost exactly the same amount as that put aside this year for the new Town Hall so it is true to say that if the town hall were scrapped there would be no need for cuts this year.