



WE NEED ST. OLAVES

HUNDREDS OF WORKERS, PATIENTS AND SUPPORTERS packed into the meeting of the Guy's District Community Health Council on September 27th to fight against the closure of St Olave's Hospital in Rotherhithe. An overflow crowd gathered in the courtyard outside the nurses' dining room at the 100-year-old hospital and listened to the proceedings through loudspeakers.

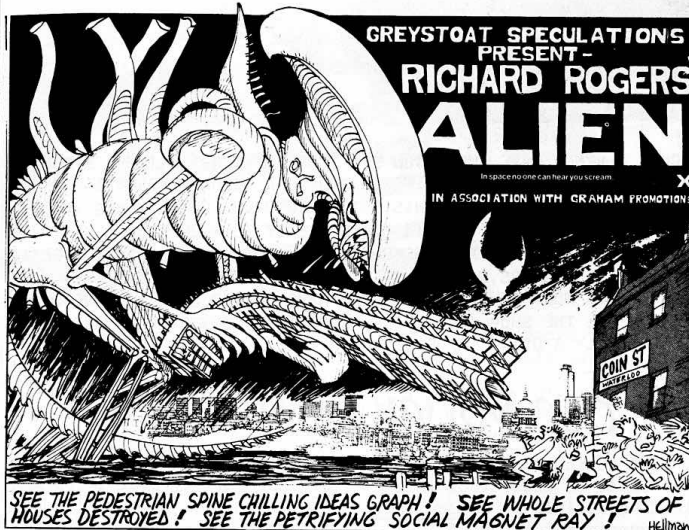
The audience enthusiastically approved a resolution passed by the council calling for the resignation of the five commissioners appointed by Tory Social Services Secretary Patrick Jenkin to implement savage health cuts in south east London. The Commissioners were appointed by Jenkin after the Lambeth, Lewisham and Southwark Area Health Authority refused to carry out the Tory cuts.

A second motion, proposed by

councillor Coral Newell, passed by the CHC called on Jenkin to appoint a commission to investigate the costing of super-specialities in the area and maintain the current services until publication of a report and full consultation with the CHC.

Wally Warbey, an asthma outpatient at St Olave's said "the first thing they did was to give themselves a £10,000 rise. And the next was to cut the hospitals to pay for it. Maggie Thatcher has cut everything else and all she's got left now is to cut our throats".

An action committee of workers, patients and local residents has been formed to fight the closure plans - part of the plan of the Tory Government to cut public spending and services (see the centre pages for more news).



SEE THE PEDESTRIAN SPINE CHILLING IDEAS GRAPH! SEE WHOLE STREETS OF HOUSES DESTROYED! SEE THE PETRIFYING SOCIAL MAGNET RAY!

MONSTER ON GENERAL RELEASE - CARE OF RICHARD ROGERS, THE ARCHITECT PROPHET FOR GREYCOAT LONDON ESTATES. With thanks to Hellman of the Architects Journal, Sept. 19th 1979. See Page 8 for Coin Street story.

GLC SCRAP HEAP

THE GLC HAS SCRAPPED PROPOSALS TO BUILD HOUSING ON THE SITE IT OWNS IN THE CUT, presently used for allotments.

The land has been declared "surplus" to the Council's housing programme as the GLC has all but stopped house building in London and is quickly getting rid of considerable amounts of land and buildings. The policy is part of a broader strategy - or non-strategy - which is running into considerable criticism from many quarters (see "GLC Staff Attack Council Policies", page).

Residential Use ?

No alternative use for the site has been fixed, this is to

come up before the relevant area planning committee though the current GLC favourite is to sell it on the open market. The site is zoned as residential in the District Plan for Waterloo, but the Coin Street inquiry shows how little respect the present GLC and property speculators have for such expressions of local opinion.

NEW TOWN HALL

SOUTHWARK'S NEW TOWN HALL IS STILL GOING AHEAD as planned, despite reports that it was being scrapped.

Whilst it is true that the Council have axed over £2 million that was set aside for the NTH fund next year, because of the way the £70 million project is funded it is possible to do this and still carry on as planned.

Juggling Funds

This piece of public relations by Southwark Council at a time of cuts in services is possible for 2 reasons.

(Continued on Page 2)



WHAT'S INSIDE

THE CUTS - What's it all about.....p 4&5

IRONCHEST HARRY - On the beat.....p 6

BUTLERS WHARF - sell out..p 7

RELIEF ROAD ROW.....p 8

SOUTHWARK ABORTION

CAMPAIGN - public meetings..p 3

LET'S KEEP IT OURS

DESPITE A STRONG LOCAL CAMPAIGN, St Andrew's and St John's school in Roupell Street closed its doors to children at the end of the summer term in July. The future of the buildings is now being considered by its owners, the Anglican Diocesan Education Board, who have several applications for use by organisations from outside the Waterloo area.

Local people are asking the Board to consider reserving at least some of the building for community needs but may be

blocked by the Board's desire to get a "commercial" return on the property.

Peabody Trust, which has an estate next door, may also put in a bid for housing on the site. The Board is keen to dispose of the building quickly but local people are asking for a little patience and imagination to allow solutions to emerge which will satisfy the Board's needs and also benefit the community.

Lambeth

'FIGHT BACK'

LAMBETH TRADES COUNCIL HAVE STARTED A CAMPAIGN TO FIGHT THE CUTS being imposed by the Tory Government on all sections of the Welfare State. Health, education, public transport and public services which all go to make up the 'Social Wage' are under attack.

The Trades Council have invited trade unionists, community groups, tenants associations and individuals who are interested in fighting the cuts to join with them in a Fightback Campaign. Only by organising all sections of the community can we stop the destruction of the services to the old, the sick, the young and the continuing deprivation of the Inner City, particularly the older areas of Lambeth and Southwark.

The aims of the Fightback Campaign are:

- ** That all cuts are stopped immediately and that those already made should be restored.
- ** That all services should be expanded in line with our real needs. We need more of these services, not less.
- ** That people in the community must have a real say in the running of their services, which they pay for.

The first major objective of the Campaign will be the march on NOVEMBER 7th - and we call on all sections of the trade unions and the community to show the Government that we are not prepared to accept a reduction in our standard of living or any attacks on our social services. This march will be just the beginning of a continuing campaign.

Health Service

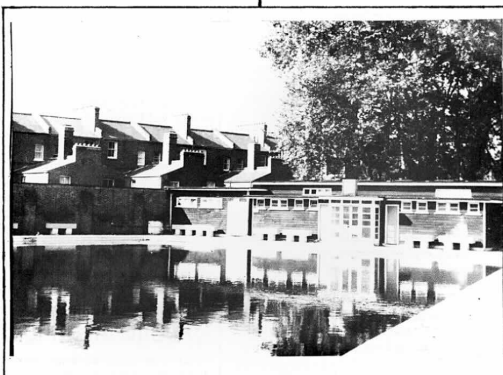
ST OLAVE'S THREAT

ST OLAVE'S HOSPITAL IN ROTHERHITHE HAS BEEN THREATENED WITH THE WITHDRAWAL OF ALL IN-PATIENT SERVICES from December 1st. The Health Service Commissioners, who were appointed by the Government to implement cuts that the Area Health Authority refused to make, decided this earlier this month.

Action to stop the closure of the hospital began when 200 staff made their feelings known to Jim Callaghan as he was inaugurating Southwark Council's new sailing barge at Cherry Garden Pier, Bermondsey. Ann Knight, shop steward of Southwark NALGO branch, told SE1 of the action being taken. "Publicity has been circulated to all local shops, pubs, housing estates and tenants associations have been standing outside the hospital getting signatures for a petition. They've already got over 60,000 signatures. Bermondsey Labour Party have set up an action committee which includes

Your help is needed to make this campaign a success. We plan many activities over the next few weeks to publicise the march including street theatre in various parts of the borough, film shows posters, leaflets and meetings. We plan to hold a large public meeting on the night before the march to which we are inviting many well known political and trade union leaders to speak.

If you wish to defend your Public Services and would like to get involved, contact Chris Sutton, 74a Haverhill Road, Balham SW12. 675 1782, or John Yates, 17 Helix Gardens SW2. 671 3598.



UNDER THREAT:

War Museum Park

Open Air Pool

THE CUTS - what's it all about

How do they justify the policy?

What they say is this: there's not enough money to go round; we're not producing as much, so we'll all have to tighten our belts until we do.

It's true that there is less wealth being produced, because with a crisis there is less trade and less is produced. But whose fault is it that there is less trade? It is a natural result of a system based on profit and competition, that trade goes up and down. And who pays when the crisis comes?

When they say 'all tighten belts' they mean 'some tighten belts'. Who suffers when hospitals are closed, pensioners clubs cut, or social services reduced? Certainly not the bankers and factory owners. If they say 'we'll have to work harder for the same pay', they mean 'some of you will have no job at all, and that way we will go on making profits.'

What in practice they are saying is that although there is a crisis, they are determined not to suffer from it. They would rather cut the standards of living of working people.

who do 'CUTS' benefit?

These services are all paid for out of taxation. With our whole economy going through a severe crisis, property owners and companies are looking hard for ways of continuing to make profits. Cutting public services would benefit them in several ways.

One is that more of the money paid in taxes is then available for grants and subsidies for private industry.

Another is that when public services are closed down, opportunities open up for private business (like plans to turn St Olave's into a private hospital or the pickings available to private builders if they succeed in getting local authority building departments closed.)

A third is to reduce the level of taxation - income tax, corporation tax etc. The Tories won a lot of votes for promising to reduce taxes - but the reductions have benefited companies and company directors rather than ordinary wage earners, for whom the price increases as a result of V.A.T. going up have wiped out the benefit of tax cuts.

How the 'CUTS' are enforced

Some services are paid directly by the government like pensions, defence, social security, civil service etc. The Government controls this spending itself.

The rest of the public services are provided by local government - Lambeth and Southwark Councils, the GLC, the Area Health Authority etc. To cut this spending, the Government has done two things; it has reduced the amount of money paid from central funds to support local council budgets and it has ordered the local councils to reduce their spending, with a threat that if they don't they'll get even less next year than they would otherwise.

What can Councils do?

Faced with these demands and threats what can local councils do? They have two options. One is to do what the Tories want.

The other is to go on providing the services they are pledged to provide, and which they know are needed. This is what Lambeth Council has decided to do, after strong pressure from Labour parties in the borough. But making the decision is one thing; if they do this, the money still has to be found.

If the Government has said it will give less, where else can it come from? One solution is to increase the rates - which is not really a solution because it would mean paying twice for the same service - once in taxes, and once in extra rates, rents, charges or whatever.

Another solution is to borrow the money from banks and other financial institutions. But if they do this, interest will have to be paid, in addition to the loan. And since it is exactly organisations such as banks that are demanding the cuts in public spending to protect their profits, they are not likely to be willing to lend money to councils that are refusing to do so.

Make them pay

A third option is for the council to go on providing the services, and demand that the Government changes its policy, and pay for these services out of central funds.

When working class organisations like labour parties and trade unions demand that councils refuse to implement the cuts, this is really what they are saying. That the Government must be forced to change its policy; that working people must not be made to pay for the employers' crisis, for the employers' desire to go on banking their profits.

UNDER THREAT:

St Albans Hall lunch club for pensioners



How can they be forced to change policy?

How can the Government be forced to change its policy? Obviously, just calling on it to do so would be like King Canute ordering the tide to stop. The only thing which makes any authority - central government, local government, or whatever - change its policy, is if it finds that there is going to be so much resistance to the policy that it will be more difficult to carry on with it than to alter it.

The strength of working people lies in their numbers, in public outcry, in the fact that if enough people say 'NO' to the Cuts the Government will be unable to force them on us. This means making sure that as many people as possible go on the demonstration to Parliament which Lambeth Council and Lambeth 'Fightback' Campaign are organising for NOVEMBER 7th, with the support of Southwark Trades Council.

It means showing our support wherever people are organising to prevent a cut being made, like those who are preparing to resist the closure of St Olave's Hospital.

And it means not allowing anyone to get away with the argument: 'Well, if the money isn't there, what option do we have?'. The money is there, it's a question of not having it stolen from us.

Southwark

STALLS

SOUTHWARK COUNCIL HAS TO DECIDE IN THE NEXT THREE MONTHS whether it will cut 2½ million pounds from its £50,000,000 budget to satisfy the savage demands of the Conservative Government.

A report now circulating in the Council reveals a trail of destruction throughout the borough that would set back services to pre-war levels. No service would be spared the axe. Social Services, being the biggest, will have to lose over £1 million if the full cut the government is asking for is implemented.

The grim picture of day centres closing, charges for meals and nurseries doubling, lunch clubs closing, home helps being cut and recruitment of staff being frozen is just part of the view. Doubts have already been expressed about the future of St Albans Hall in Manor Place, the largest lunch club in the borough. Elsewhere, the 8 laundries on the Aylesbury Estate could be closed, and estate lighting reduced. On the leisure side a library servicing over 10,000 people is suggested for closure along with the open air baths in Southwark Park and the War Museum Park. Camberwell Baths is also facing the axe. Rents could go up by £2 per week.

Redundancies

Over 50 redundancies from the closure of public toilets are another possible way of saving money the report continues, and as if roads and pavements are not in bad enough repair it is suggested that £½ million be cut from the maintenance programme.

The report has yet to be put before the Councillors, but is certain to create a storm when it does. Already the Peckham Labour Party is mobilising itself for a fight against the cuts and is calling for an emergency conference in October.

Suspended

Neighbouring Lambeth have already decided that they will defy the Government and not cut services. It will be interesting to see how Southwark Council, faced with determined opposition to the cuts, will act. Already they have agreed to suspend for 1 year money to the New Town Hall fund (see article on page 1). Certainly the £3 million plus set aside at present for the NTH is more than enough to offset the demands for cuts from the Tory Government, but it would take a massive change of approach by Southwark Councillors to swallow their pride and do it.

The Conservative Government is to blame for the expected rent and rate increases, but Southwark Council could resist cuts in services. It is up to residents to convince the Council - as in Lambeth - that a different approach is possible. Giving in to the Tories won't help the residents of Southwark one bit.

UNITY MEETING

A united organisation of tenants and building workers in Southwark is to be set up, following a meeting in the Rockingham Estate Jubilee Hall this month.

The aim will be to campaign together to prevent Southwark Council closing down the borough building works department (direct labour organisation) and to ensure a better repair and maintenance service on estates.

Susan Masters of the London Tenants Organisation reminded the meeting of the difference between the quality of work done by Direct labour workers, and the noise, dirt and confusion created by private contractors accountable to no-one and never seen again.

SOUTHWARK CUTS MEETING

SCVS is calling a SPECIAL GENERAL MEETING on the evening of Tuesday 30th October, to discuss public spending cuts in Southwark and their implications for local voluntary organisations.

The meeting will look at what is happening nationally as well as focussing on the proposals being made by the local health authority, the ILEA, and Southwark Council. There will also be plenty of opportunity to share information on local attitudes and action. Please put the date in your diary now; Phone SCVS 703 9730 for further details.

PEOPLE'S HISTORY

The SE1 PEOPLE'S HISTORY GROUP meets every alternate Tuesday in North Lambeth library.

We are a Workers Educational Association (WEA) class, and welcome new members. We spend time discussing and recording memories from ordinary people of life round SE1 - at work, at home, in the street, in peace-time and war-time.

ROUGH TIMES

Do you remember Ironchest Harry? Firewood? Lofty? Black Harry? These were some of the men on the beat round SE1 in the 1920's. At the SE1 People's History group meeting in September, Fred Davey, Bob Trehearn and Jim Holah recalled the local policemen of their youth. These are some of the extracts from their discussion that evening.

JIM: I can remember all the police coming out from Stones-end. They used to walk along the kerb, about 6 or 8 of them, didn't they? and drop them off one by one on their points duty.

FRED: They used to walk out the station in single file, and as they come to their point of duty, the Sergeant would tell them to fall out.

JIM: Certain parts, they was in two, but mainly in just the one. Any of the back turnings, being rough, you'd never see less than two people, always in pairs.

FRED: The years that we were talking about, they were very rough times, and the policemen used the methods that suited the times. The people was just as rough as the policeman was, and they had to speak their language. If it meant hitting you across the head with a stick, or setting about you with their hands, well, they'd do it - and we'd do it to them.

From that talk, we put on paper histories of working people.

Four such memories - by Ada Maxted, George Slayford, Helena Sime and Daisy Holah, are already in print, and can be obtained, price 10p each, at the library.

To find out more, do come to our next meeting, or ring Jane Mace (274 4617), SE1 People's History group convenor.



IRONCHEST

Ironchest was an outstanding character. You imagine this policeman, seeing him fight half a dozen men like I have, he's bound to stand in my memory. He had seven children - more - used to pile on the back of his motorbike, and in the sidecar. He used to live in Black Prince Road.

He'd help anybody. He came down the street one day, and one of the old ladies said to him "Harry - that so-and-so in there is knocking that poor woman about something shocking". So he'd say "oh, is he?" and in he went, and he was.

The next ten minutes there's murder, isn't there. There's Harry and this tough fighting it out. They finish up tumbling down the back stairs: and

TRAFFIC GUM

I think it was Ironchest, one day, there was a big hold-up on Westminster Bridge, where the trams were running. Apparently he had been chewing some gum. Before he ran up to sort this traffic out, he stuck it on one of the trams, and he couldn't remember which one! After he's got it all cleared, they're coming off the bridge, and he's shouting to the driver, "slow down!" And the driver says "What's up Harry?". He says "I've got my chewing gum on one of you".

He found it at the finish, and he took it.
B08: If you want to find Ironchest's name out, he finished up being the cleaner for Lambeth police court in Renfrew Road, after he retired. A good 15 or 20 years ago I'd say. Course he was in the first war, wasn't he. He had his ribbon, the Mons ribbon.

BLACK HARRY or FIREWOOD?

FRED: One of the nicest policemen we used to have down there - it could be Firewood or Black Harry, I'm not sure which now. (Black Harry had a real old-fashioned black moustache, one of them curly ones - that's why they called him Black Harry. But I never knew why they called Firewood Firewood.)

On a Sunday afternoon, grown-up young fellows used to gamble on the street playing dice: and they used to have a chap who was out of work, down the bottom, called the doggy-out - looked out. But this copper could always get into that school of gamblers without anybody seeing him.

Everybody would scatter. He would walk over to them, take his helmet off, turn the cards up, and he took all the money out.

All the kids he could see, "Come on - come with me" and walk them up the street. Women looking out the window, "you got any children up there, mum? send them down". He finished up with about 30 or 40 children. Took them all up the top of the street there, took all the money out onto the counter (Mrs Greenslade's) - "Give them what they want until the money goes!" And he used to stand in the doorway like that! Spent the lot!

Whereas all the blokes who blued the money were all swearing and cursing.

If you recall the local bobby of your childhood, or other stories of police round SE1, why not join us at the next meetings of the SE1 People's History Group - Tuesdays October 2nd and 16th, 7.30 pm, North Lambeth Library, Lower Marsh.

Support Your Local Shop

OPEN UNTIL 8pm Monday - Friday
7pm Saturday
1pm Sunday

* Fresh milk daily

* Frozen foods

* All groceries and provisions

* Wines, spirits & beers

* Newspapers

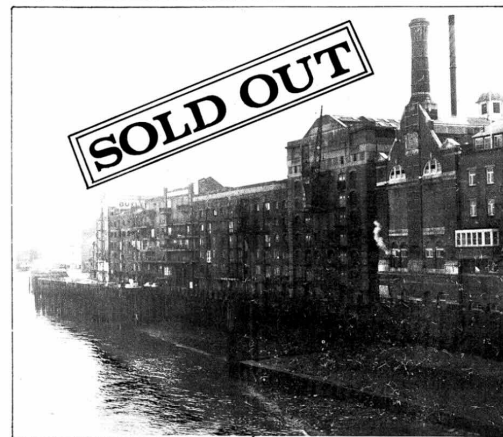
* Confectionery & tobacco

* Hot snacks, rolls and sandwiches to take away

THOS E. DAVIES & CO (TOMS)

137 Southwark Bridge Road, SE1

BUTLERS WHARF "IT'S OURS" SAY LOCALS



ANOTHER LARGE SLICE OF THE THAMES-SIDE IS ABOUT TO BE GIVEN AWAY BY SOUTHWARK COUNCIL. THE LATEST 'SELL-OUT' INVOLVES BUTLERS WHARF NEXT TO TOWER BRIDGE. THE COUNCIL HAS ENCOURAGED THE OWNERS OF THE WHARF TO DRAW UP A HUGE SPECULATIVE DEVELOPMENT

consisting of 100 private flats, a 180 bed hotel, artists studios, assorted tourist facilities, a coach park plus other commercial uses.

Coming so soon after the proposed destruction of St Mary Overy wharf near Southwark Cathedral, and Southwark's sell-out at Coin Street where they are talking about building £85,000 private flats, the riverside is starting to look like the rich man's playground that local people always feared.

Needless to say, the now notorious planning committee was full of enthusiasm for the Butlers Wharf plan, choosing to ignore once again the wishes of the community for housing for local people and for industrial development. These views were put forward by residents groups in the North Southwark Local Plan two years ago but these views, which were put in writing, were not even referred to by the committee.

Councillor Rowe, from Rotherhithe Ward, gave his opinions on property development which make Harry Hyams look like a Boy Scout. He called Town and City's awful scheme "imaginative". The committee chorus of Cllrs. Watts, Potter, Davies, Lee, and Lees joined in the rapturous applause.

"ditch Watts, Rowe, Davies, Potter etc."

Riverside Ward Labour Party, in whose ward Butlers Wharf is located were not consulted. They are angered by the proposals and intend to fight them. A prominent member of Riverside Ward Labour Party told 'SE1' "The local elections in 1982 can't come soon enough as far as we are concerned so that we can get rid of the present planning committee and replace them with councillors who do care about the community".

LOCAL PEOPLE OF SE1

Blackfriars Settlement needs more literacy tutors. It does not matter whether you are working class or middle class or whether you have A and O levels. All you need is to be able to read and write, and have the view that just because we can't read or write, we are not different from anybody else. Please come and find out about being a tutor, we need local people. We need your help. Chris Bell, literacy student.

Get in touch with ERIC PYE or ALISON TOMLIN, Blackfriars Settlement Literacy Scheme, 44-47 Nelson Square, telephone 928 9521 or 261 1268.

If you want a free "bird's eye" view of London go see the model on display at the Coin Street Inquiry Show.

The Thames in bright blue plastic, buildings nice and clean - its rather pretty.

It was made at great cost for property developers Greycoats to show that their proposals aren't as massive as many people think ... seen from on high (by an eagle rather than a woodpecker) nothing is more than a few inches high! I got dizzy looking at it.

Of course not everyone was comforted by it - they're spreading an unkind rumour that Greycoats are building another model, showing their plans seen from the moon. Copies will be made and given away in matchboxes.

Greycoat's Head QC told the Inquiry his client's scheme is the only 4-legged horse in the race. Unfortunately the guy who designed it, Richard Rogers, had his head in the clouds when he dreamed it all up.....



WATERLOO WOODY

REASON TO BELIEVE ?

Facts are hard enough to find in newspapers, but us journalists regard public relations men as the real enemy of the truth. It comes as no surprise therefore that Southwark Council are proposing to double the size of their public relations department. (p8)

Southwark's PR chief Warren (Eddie Waring) Newman MIPR, TWIN CAM, MAIE, TWIT, TWOO, TWADDLE, will need an HQ the size of the empire state building before he is satisfied. He has produced a mind boggling report which aims to convert Southwark's image from the 'Sweeney' into 'It's a Knockout'. His report involves a cost of £200,000.

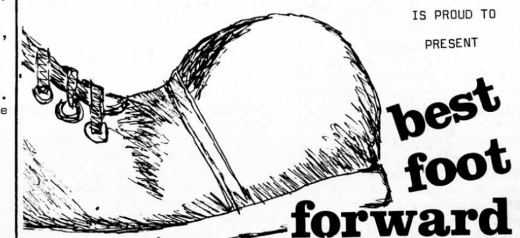
I recommend that the whole thing is shredded and distributed to needy birds for their winter nesting boxes.



COLOMBO STREET SPORTS AND COMMUNITY CENTRE

COLOMBO STREET, SE1

IS PROUD TO PRESENT



best foot forward

OPEN DAY

2 - 5pm

Sports displays
Games
Exhibitions
Light Refreshments

7 - 12pm

Dancing and Theatre, followed by Disco with Bar



SATURDAY OCTOBER 20TH

Further details from 261 1658.



ALIEN



AS THE COIN STREET PUBLIC INQUIRY MOVES INTO ITS FINAL STAGES, THE PROPERTY SHARKS ARE QUEUING AT THE DOORS OF THE GLC HOPING THAT IF THE MINISTER RULES IN FAVOUR OF OFFICES THEY CAN BUY COIN STREET FROM THE GLC.

The outcome of the Coin St Inquiry may not be known for a year or more but the GLC is behaving as if there's no doubt about what it will be.

Council officers are already starting to prepare to get rid of the GLC-owned land in the area. When the Secretary of State announces the decision they reckon all they'll have to do is put a few "finishing touches" on their paperwork and the property will hit the market.

They say this preparation is "so that the development can be undertaken as quickly as possible".

Megalomania

Greycoat London Estates, the last of the property companies to present its case, has had its scheme condemned as a "dinosaur" by the Royal Fine Arts Commission, a "barrier block" by Lambeth Council and a "Berlin wall to cut off South London from the River" by local community groups. In a letter to the Architects Journal, Simon Jenkins (formerly editor of the Evening Standard) has described the scheme as "wildly out of scale...a classic of the architectural megalomania so well demonstrated upstream at the Shell Centre, and downstream at Kings Reach.

Lifeless

Meanwhile the National Theatre board has written to the Inquiry Inspector telling him that "It would not favour a concentration of offices, whose occupants will generally leave before evening - so taking life out of the area... Many National Theatre employees live locally and others wish to do so. We would like to see improvements in housing and amenities both for our employees and other residents... Any development should respect the wishes of the local community in seeking a continuance of a strong local life."

Confusion

Inside the John Marshall Hall, Colombo St, where the Inquiry is being held, there has been growing confusion about the Greycoat plans. Although Greycoats are promising to include some residential and recreational facilities in their scheme, their Architect Richard Rogers has told the Inspector that the Developers are not prepared to subsidise the recreational centre which will have to be run on a commercial basis. As far as the residential accommodation is concerned only "some" subsidy would be possible and he

was unable to promise any figure at this stage. Further, although his scheme included all 1,300,000 sq ft of offices asked for in the Greycoat planning application, the recreational and residential elements were 20% less than the figures shown in the application.

It has also been found that Rogers' illustrations underestimate the size of the scheme. Architects working for the Coin Street Action Group have suggested that, on average, the buildings would be 25-33% higher than illustrated, and Rogers has already apologised for accidentally omitting a 100,000 sq ft office block from one of the drawings.

Unbuildable

There has also been some sniping between the architects with the main office schemes. Gordon Graham, an ex-president of the Royal Institute of British Architects, hired by Greycoats to support their scheme told the Inquiry that the Heron/Commercial Properties scheme would be "a disaster... Another collection of tower blocks would be terrible". Meanwhile the Heron/Commercial Properties' Architect, Derek Stephenson, has called the Greycoats scheme "unbuildable and unfundable" and also doubts whether the illustrations show all of the offices proposed.

'Mixed Uses'

A spokesperson for the Coin Street Action Group told SE1 "At this stage all that the Property companies want is for the Inspector to recommend that the sites should be rezoned from 'Residential and Park' to 'Mixed Uses' i.e. basically offices. The Architects are just being used to 'sell' this re-zoning to the Inspector and afterwards they and their particular schemes may be dropped. That is why the principle of offices on these sites must be opposed and not just the architecture of the schemes being presented".



THE LAST CHANCE TO TELL THE INSPECTOR YOUR VIEWS COMES THIS MONTH. PLEASE CONTACT HOWARD SIMMONS OR FRED MILLER AT WATERLOO ACTION CENTRE IF YOU WISH TO SPEAK.



JUST COMPLETED, THIS MURAL ON THE SIDE OF THE ST. GEORGES' TAVERN IN LAMBETH ROAD FEATURES THE LANDLORD & LANDLADY TAKING A WELL EARNED REST.

Image-Making

Southwark Council's Public Relations officer Warren Newman is one man who doesn't seem to have noticed that money is rather tight these days. In a recently released report, called "Framework for Understanding", he puts forward proposals to spend over £185,000 to boost the Council's image.

Much of this would be spent expanding the Public Relations Department from 11 to 19 people. Other ideas include a Radio and TV interview course for Committee Chairpersons and Chief Officers, a new Council logo, and widespread advertising of Council services with slogans like "Caring for the Community".

The Report presently being considered by the Council's Press and Public Relations Sub-Committee, is known to have a fair body of support amongst senior council members and officers.

Opposition to the plans is growing both inside and outside the Town Hall. One factor is, of course, its timing - the knives are being sharpened for cuts, and reports asking for increased money are bound to be unpopular.

A more fundamental cause for concern to many Council members and the public is the thinking behind the report.

It talks glibly about the need to create a dialogue between Council and Community, but a glance at its recommendations of what it wants to spend money on shows this to be window dressing.

It's not about increasing the ability of local people and even ordinary Members to influence the huge Council machine. At its heart is one way communication - selling the Council.

RELIEF RD. NO!

OVER 280 PEOPLE FROM ROTHERHITHE AND BERMONDSEY VOTED UNANIMOUSLY TO OPPOSE THE GLC'S PLANS FOR THE SOUTHERN RELIEF ROAD at a meeting on 25th September at Rotherhithe Baths.

The road is planned to slice through Bermondsey and Rotherhithe from the Bricklayers Arms, through Southwark Park and Surrey Docks before disappearing under the river to the Isle of Dogs.

At least 800 jobs would be lost - in an area where it is already an uphill struggle to revive industry that has closed down - reported Bob Colenutt from the Joint Docklands Action Group.

Other speakers at the meeting included Ted Johns from the Isle of Dogs Action Group and John O'Grady, leader of Southwark Council. Ted pointed out that the Southern Relief Road is only half the story because both Southwark and Tower Hamlets Councils have their own road schemes which fit neatly into the GLC's one despite the fact that they are against the SRR.

The new Action Committee, called the Bermondsey and Rotherhithe Campaign against the Southern Relief Road, is working out a plan of action. Contact Barney or Francis at 231 2372