



CHAOS!

**Tears in the
Housing Office
over GLC
estates transfer**

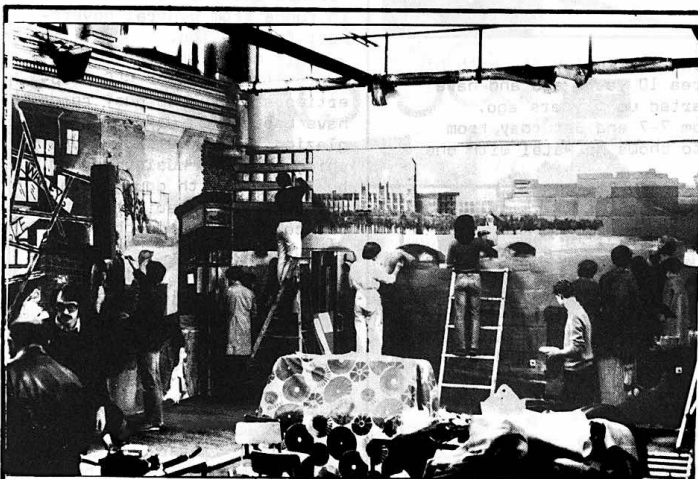
Long queues of confused and frustrated tenants outside Southwark Council Housing offices; an old woman in tears when someone told her that the GLC housing transfer list had been abolished - she'd been waiting in hope for years; families in overcrowded flats facing an even longer wait for a transfer ... these are some of the immediate results of the GLC's decision to dump all its housing responsibilities onto the local authorities in each borough, and of the rumours and doubts which this decision has created.

The transfer of GLC housing stock to the London Borough of Southwark took place on 1st April and as was predicted by the Southwark Group of Tenant Associations, Southwark Council's Housing Department is in chaos and tenants are suffering worse services than they received from the GLC.

Dispute

This is difficult to imagine because the GLC who had made it clear that they were not interested in being landlords, had allowed their housing department to run down to a level which often could not even maintain bare essential services. It is true to say that many ex GLC tenants welcomed the Transfer, if only to escape from a bad landlord. These tenants are 'out of the frying pan and into the fire'; the sad situation is that although the next few months may bring some slight relief it will take years for any real improvements for ex GLC tenants to take place and on the way there is the possibility of more set backs.

Tenants now know that Southwark Council is in dispute with its unions. The dispute was caused by Southwark Council who did not carry out negotiations with its workforce in sufficient time for a Trade Union agreement to be reached prior to 1st April. The upshot of this dispute is that the rosy picture painted in Transfer News (an LRS publication posted to all tenants) has been tarnished; Southwark's intended new housing structure



Students from the London School of Printing working on murals in the hall at the Waterloo Action Centre. The project was set up by the Waterloo Amenities Group with help from Lambeth Amenities. Look out in a future edition of SE1 for the finished result.

has not materialised; GLC staff who will be joining Southwark Council are continuing in their old posts (ex GLC tenants have been instructed to continue dealing with their pre-transfer housing offices), however, only 79 ex GLC staff remain and at their best they can only provide a skeleton service; and Rent Giro slips (not incorporating the latest rate increases), have been hurriedly printed and distributed 'to tenants'.

Southwark Council's hope is that the dispute will be ended by June, but even that date is beginning to look optimistic.

Without the dispute, Southwark's plans for dealing with the Transfer were faulty. For example, tenants living in the Waterloo area were originally expected to travel to Spa Road to pay rents, a not inconsiderable journey. This has now been resolved and in future ex GLC tenants who are not within convenient distances from a Rent Office will be issued with Rent Giro Vouchers. However, it is certain that other serious faults will be found once Southwark's New

continued on page 2.....

What's inside

"PROBLEM FAMILIES" and
TENANTS' NEWS.....p.3
PIE & MASH.....p.4
SOAP-BOX.....p.6
WATERLOO WOODY.....p.8

IT'S A
LOCK ~
OUT!!

If you've seen blue, yellow and white posters springing up in threes, you'll already know that Claimants' Rights in Southwark (C.R.I.S.) has been active over the past few weeks. Here's the key:

YELLOW POSTER: This one tells you that three out of ten payments made by the DHSS at Wedge House are wrong. The Government has cut staff so badly that the ones who are left don't have the time to get their sums right.

WHITE POSTER: This one advertises the meeting we had at Colombo Street. It wasn't a large affair but there were four new faces and we had a good discussion about the problems people face trying to get their weekly money from Wedge House.

BLUE POSTER: With our new members, we had a good group to walk from Wedge House to the DHSS HQ at the Elephant - for the famous CRIS complaints day.

Complain was one thing we didn't do, though. The moment we arrived at Alexander Fleming House, they shut the door at the Public Enquiries Desk and locked it! So much for a Public Enquiry Desk.

Instead, a worker from Wedge House made a speech supporting CRIS, and so did a CRIS member. Then it was off to the Rockingham clubroom for tea and biscuits - and a discussion of further action.



A CRIS supporter holds a placard aloft on the way to the complaints day at Alexander Fleming House.

THE NEXT CRIS meeting is on Thursday 8th May at Blackfriars Settlement (44 Nelson Sq.) at 2 p.m.

NEWSAGENT OF THE MONTH



Mr. PATEL runs the Tower Mini Market in Tooley St. with his brother. They moved to the SE1 area 10 years ago and have been selling SE1 ever since it started up 5 years ago.

The shop is open on weekdays from 7-7 and Saturday from 7.30 - 2 and Sunday 8-1. Our photo shows Mr Patel with one of his shop assistant's.

NELSON SQUARE

T.A. say

'Thank you'

Dear Sir

Since our explanatory article in the February issue of SE1, other readers of your newspaper, i.e., Young Vic Education Community Service, Colombo Community Centre, Morley College and many others have contacted us offering help and advice. We would like to place on record, our appreciation to them for their kind offers. With caring units like these who are willing to share their Know How behind you, Tenants Associations can become more knowledgeable in their endeavour to improve the environment of their estate and the district in which they live.

Our present problem is the Take Over of the Greater London Council's 23,000 houses by Southwark Council, what dire effects will this have for Southwark's tenants, we already have an Industrial Dispute by the Caretakers, when this is finalised, what next?

One thing we are sure of is, that SE1 will keep a wary eye on this situation during the coming months and will raise its voice in protest if there is any sign of skulduggery taking place.

Yours
W. Strudwick
Chairperson
Nelson Sq. Gdns. T.A.

WRITE

to SE1. We want to hear your news and views. Send your letters to: SE1 Community Newspaper, 12 Maymont St, SE1, or give us a ring:

928 1643

Anonymous

SE1 has recently received an anonymous letter which picks out some interesting quotations from "Southwark's Plans for Renewing a Key Area on the South Bank". SE1 has a policy of not publishing anonymous letters but if the writer would care to supply a name and address we will happily print the letter.

GLC HOUSING TRANSFER LIST

Many of those who were on the list of applicants for transfer to other accommodation under the GLC may be wondering what will happen now that Southwark has taken over the GLC housing in the Borough. The answer is that Southwark has more restricted criteria for accepting such applications, and so all GLC transfer applications are being reviewed by Southwark Housing officials, and those who still qualify under Southwark's own rules are being informed of this, while the rest are being told they are no longer being considered for transfer.

If you were on the GLC list, and haven't yet heard anything you should contact the local Southwark Housing office, or the Southwark Group of Tenants Associations for more advice.

SE1 TENANT TANSWELL TENANTS GET POOR ANSWERS

On 24 March 1980 representatives from Lambeth Interwar GLC estates met with Len Harris, Deputy Leader of Housing Management Committee at County Hall to discuss further the issues raised at the Oval House public meeting in November 1979. The only result of this public meeting was that those tenants who have had their flats package improved since February 1980 now receive an increased disturbance allowance.

It is a great pity that many of the improvements which still are in the pipeline are now further delayed due to the cut in funds from central government for housing.

This means, for example, that although newer GLC properties situated on busy roads have been built with double glazing, those flats on roads which have got busier cannot be refitted with double glazed windows. It also means that the courtyard and lighting improvements and the remedying of damp problems will have to wait longer.

Len Harris thought that the drains (which are regularly blocked) were adequate and if they became blocked then the fault lay with the tenants. When rubbish chutes became blocked and litter spills into the square, then again the GLC

think this is the tenant's fault. They refused to accept that 1930's design of chutes and drains are inadequate when dealing with 1980's volume of waste.

The question of tenant mobility was again raised bearing in mind the overcrowding on certain estates and the need of families for better accommodation. Mr. Harris gave a poor answer to this dilemma - he reckons that owner-occupation, i.e. you buy your home of your choice, should solve this, but did not consider the current policy of selling off council houses with gardens which keeps tenants trapped in grotty flats with little hope of moving to better surroundings.

COLDITZ!

The idea of being trapped is further highlighted by the severe level of illumination recently introduced on some estates to deter mugging. The lighting is so bright that it has earned the name of THE COLDITZ EFFECT. The change to a more human level of lighting should be reviewed when (1) the environmental improvements get underway.

As the threat of the transfer of GLC estates to the local boroughs still looms on the horizon, it was pointed out that GLC tenants had not been contacted to find out their views. The Deputy Leader was of the opinion that the tenants had given their approval of this transfer at the last GLC election and thus consultation was not necessary.

The GLC is determined to make as much profit from housing as is possible. Maximising rents, minimising expenditure and selling off the better quality housing is their road to fortune and our road to inner city slums.

Continued from Page 1.

Housing Structure comes into operation.

Perhaps one of the most disastrous pieces of news for ex GLC tenants is that the Government has slashed the GLC's housing budget by £105 million. This means that the money promised to Southwark as part of the 'transfer deal' will be severely reduced, thus, so will Southwark's ability to spend on housing improvements to ex GLC stock.

A spokesperson for the Southwark Group of Tenants Associations told SE1:

It is never nice to say "we told you so", particularly as in this case tenants will suffer from the Transfer Chaos. The Southwark Group of Tenant Associations has always maintained that the Transfer should not have taken place until all the i's were dotted and t's crossed. Now our recommendation is that Tenants Associations must develop a new vigilance in pursuing the interests of their members. To help with this, the SGTA are willing to give whatever help it can to TAs - all it takes is a telephone call to 237 8277.



... SE1 TENANTS' NEWS ...

Row brewing over "ghetto" proposal for problem families

THERE WAS STRONG DISAGREEMENT at the April meeting of the Bermondsey District Committee over a Southwark Council working party report on problem families. The tenants' representatives who make up the committee were discussing the report's recommendation that 'problem families' should be lumped together in specially created Council ghettos.

John Axon, chairperson of Rockingham T.A., commented after the meeting:

"There seemed to be a split between the reps from the modern estates and those from the inter-war estates like the Rockingham. It's all very well for the post-war estates to say, 'Get rid of our problem families' - but estates like the Rockingham are at the end of the road - where do we dump our so-called problems?"

"Over the last ten to fifteen years, tenants on the Rockingham have experienced this kind of policy. We know it's no solution."

"There is also a positive side to the question. We believe in offering community activities - youth and social clubs - in order to involve tenants in the life of the estate."

OFFICERS OPPOSED

The working party report was in fact opposed by the officers on the working party. It was the Council members and the five tenant-reps who were in favour of the ghetto policy.

In their counter-report the Directors of Housing and Social Services made a number of points:

(1) The working-party report relied on a totally subjective definition of 'problem family' - i.e. people who caused problems to their neighbours. This had made it impossible for them to investigate the question in depth. If actually used in practice it would lead to gross injustices to individual families.

(2) The working-party had not considered how to implement their policy. Where would the ghettos be? - after all, who wants to live next door to a ghetto let alone in one?

DICKENS SQUARE LIBERATED

John Axon, chairman of Rockingham Estate Tenants Association, writes about Dickens Square becoming a park:

The Rockingham Revolutionaries struck another blow for liberty in April. They had campaigned for many years to take over the battlefield of Dickens Square, SE1. Defeated by division and subdivision - London Borough of Southwark GLC and ILEA, for years, in April 1980, they took advantage of the enemy's temporary state of confusion, allegedly brought on by

transferitis aggravated by a condition known as Nalogoism, to breach the corrugated iron fortifications. They first gained forceful, legal possession of the Squires Club, a former disputed enclave on the no man's territory. Next they pushed their expansionist luck outwards towards the main objective. They then resorted to the tactics of Command Room Co-operation with the enemy's planners, and having successfully demolished the enemy's intention to retain an impossible option to

build town houses for respectable but unwanted people, they proceeded to lay down their terms of occupation.

These included an informal play area for youth and a young people's garden next to the Squires Club along Harper Road, and adjacent, a new adventure playground (transferred in part from Falmouth Road). Behind these developments and backing on to Memick Square, it was laid down that a Recreational Park and Urban Farm should be laid out for the enjoyment of the less youthful citizenry. The enemy capitulated, with his £90,000 capital, and sent in his bulldozing troops the following week.

A new Dickens Square will emerge before the autumn armistice and occupation of the disputed area. In the meanwhile, new plans are being drawn up to accommodate the anticipated rush of American visitors to Dickens new found natural spring, discovered on the second day of the bulldozing. This, together with an appeal to Tommy Steele to erect one of his sculptures of Walworth's urchin, the other Charlie (Charlin), should put Dickens Square fairly on the SE1 and international map.



BANKSIDE FLATS TO OPEN

Quite what the Shadow Secretary of the Environment, the Rt. Honourable Roy Hattersley will say when he opens the Edgers Flats on the 8th of May will make interesting hearing. Whether the ex-Labour minister knows that the cost of living in them ranges from £24 to £40 per week is doubtful, but no doubt we are going to hear a lot about how partnership with property speculators can produce the goods, even though the evidence is the opposite.

However the current costs are much less than those first proposed. Initially the charges were to be from £36 to £60 for the 110 1 & 2 bedroom flats, but after a lot of discussion and argument, the Housing Committee thrashed out a formula for lowering the charges which include heating and rates.

The average rates for the flats is about £11 per week - an inevitable consequence of the hopeless planning policies of Councillor Watts, Southwark's Chairman of Planning, who along with other champions of property speculation have allowed hotels, luxury flats and offices to completely change the face of North Southwark. In the process this means rates going up be-

cause in the eyes of the District Surveyor it has become a better place to live. Local residents lose both ways, fewer facilities and higher charges.

The actual rents for the Edger development range from £11.25 to £22.50, and the Housing Committee are insisting that selection for the flats takes place in the normal way from the waiting list. It will remain to be seen if those with the highest priority get the flats, but the Committee have undertaken to tell all applicants about the possibility of rent and rate rebates in an attempt not to dissuade people from taking the flats. The maximum rent rebate is shortly to increase, and could help those on lower incomes, but the fact remains that the total costs of living in Edgers is likely to deter many people.

We are in danger of entering an era of first and second class Council housing - something a Labour borough like Southwark should be very worried about and give cause for a long searching look at Councillor Watt's ideas before any more damage is done in the north of the Borough.

FLASHBACK - to September last year, when children from the Rockingham Estate marched to County Hall to press the GLC to get on with the Dickens Square park. They were met by Labour leader Reg Goodwin (centre).

PLAYGROUND EXPANDS

So, what's new at the Waterloo Adventure Playground (WAP for short)? Situated next to Baylis Road Car Park and opposite the Old Vic, the Playground is just about to undergo its most important expansion since it's opening in 1975. Lambeth Council have recently granted money for an extension to be built on the grounded Thames barge that has been the focal point of most of the Playground's activities for the last three and a half years. The extension connected to the Barge will incorporate kitchen facilities and provide much needed space for a play and activities room for the many younger children that use the Playground.

People living in the Baylis Road area who have been woken recently by the sound of crows crowing, will know that WAP have, in the past few months, acquired chickens and a rabbit.

We recently talked to Playleader, Jackie Summerford, about the extension and plans for the future.

Q. Jackie, can you tell us something about the staffing and management of the Playground?

A. At the moment we have three playleaders, myself, Jim Cross and Jim Butler* and we are occasionally helped by volunteers. We're responsible to a management committee with representatives from Blackfriars Settlement, Waterloo Action Centre, a local Clergyman and local residents.

Q. You say you're helped out by volunteers - could you use more help?

A. We're always glad to see volunteers but we particularly like to see more involvement from parents who use the Playground with the hope they would eventually become involved with the management committee.

Q. The children who use the Playground, who are they?

A. Most of them are from the neighbouring estates, but we'd also like to see kids from further afield - after all the Playground belongs to them in Waterloo.

Q. What sort of age range does the Playground cater for?

A. All ages, but mainly for the 5 to 16 year olds.

Q. What sort of kids are they?

A. Well, some of them are a bit lively, a bit of a handful,

but if they are going to let off steam the Playground seems an

ideal place to do it - a few of the kids are jobless teenagers

that perhaps should have

outgrown the Playground. But

they're welcome here and realistically, there isn't that

much else they could be doing in the area.

Q. You talk about jobless teenagers - does that make it difficult for you to cater for the whole age range?

A. Yes, obviously it does. The older ones tend to want to

dominate things and there is always the danger the younger ones get lost on the way.

Q. Finally, Jackie, what local things would you like to see happening at WAP in the future?

A. Above all, I'd like to see more local people involved - its for the local community,

let's see the local community using it, and I don't just

mean local kids. The Barge is there - it can be used for

all sorts of things: parties, discos, knees-ups for a very

small charge. If anyone is interested ring me on 633 9535.

* Editor's note: Jim Butler is

about to leave his position as

Playleader - if you're interested in the post contact

Jackie on the above number.



Interior of Mathews' original shop



The staff of 'tin bashers, carvers, shop washers'. G.F. and H.J. Mathews are 2nd & 3rd from the right

MATHEWS - 175 YEARS

Pie and Mash is a traditional London dish, but have you ever thought who might be making the pie tins? Well, 'hat's also part of local history, but whereas pie and mash look like continuing for ever, G. F. and H. J. Mathews and Company Limited in Borough High Street, who have been supplying the catering trade since the time of the battle of Trafalgar in 1805, will be closing down when the last of a long line of Mathews, Mr F. H., retires shortly. For several weeks now, a closing down sale sign has been in the window where once hung signs such as 'Families Waited On

Daily', and Mr Mathews, his wife and staff have been disposing of, not just the latest in kitchenware, but an accumulation of odds and sods that have built up over the years.

Wooden Peelheads, D-shaped salt containers, fern-entice tubes, Savoy pipes, larding needles, Egg brushes, seal boulds, bread baskets, custard cups - anything and everything to do with bread-making or catering could be bought at Mathews. At one time 10 tin-smiths bashed away in the workshops behind the shop in converted stables off Lant Street, making to order the specials and "one-offs" that there is still a call for even in these days of plastic and metal stamping.

Wherever there are tradesmen involved in a craft, be it tin-bashing or baking, someone always comes up with a new idea to try out and a call to Mathews would produce the goods. At one time there were wood carvers employed making moulds for shortbread. Everyone has heard of Coronation Mugs - but Mathews made special shortbread moulds for big occasions such as the 60th anniversary of Queen Victoria's reign. Now all we

seem to get is the big sell, where the type of wrapping is more important than the contents and the days of personalised shortbread are over. Some may say "So what", to which the reply is, "You can't have your cake and eat it".

Even though things have changed drastically in the bread industry from the days when there were literally hundreds of small bakers to the days of a virtual monopoly by a few big firms like Mothers Pride, the actual baking process has changed little. Apart from the fact that bakers no longer put mashed potato in bread (though they probably put in a lot worse), most of the implements for baking - the Peelheads, the trays, the baking tins have changed little over the years.

The reason Mathews is closing is not because of lack of business but simply because there is no-one left in the family, or elsewhere, who wants to take over when Mr Mathews, now 71, retires. A similar fate befell the metalworking which ended when Mr Mathews' brother retired two years ago.

For all those SE1 readers who may be starting to panic where their next pie and mash

is coming from, we can reveal that other firms, such as Metal Box, will only be too grateful for the business. As to the future - the shop premises in Borough High Street is to be converted into a wine bar/restaurant. It seems the number of wine bars opening in SE1 is directly related to the number of shops we lose. (Could this be anything to do with office development?)

It is ironic that as Mathews is about to close a consumer (that's you and I) revival is about to start in the form of the 'Campaign for Real Bread'. We may not get back to those days of making special moulds for shortbread, but at least we might recognise that the craft of breadmaking and baking does not rest solely on funny little men in bowler hats beating hell out of a bag of flour as the television ads would have us believe, in a desperate attempt to get us to swallow anything between episodes of ghastly programmes like Dallas.

Below: Mr & Mrs F. H. Mathews Have a happy retirement!

WATERLOO FESTIVAL 1980

As you may have read in April SE1 the Waterloo Festival Committee is already hard at work organising the 1980 Festival, which will take place this year on Sunday 13th July. We've been busy fund raising to get financial support for the festival and also letting out stalls to local groups - it's still not too late if you'd like a stall; contact the Waterloo Action Centre for details.

Local talent

We would especially like to book some local amateur groups or performers for this year's festival, who would be willing to perform cheaply or offer their services free of charge. So if you play in a local band or group why not give Jenni Wilson at the Waterloo Action Centre a ring. Also anybody wishing to come along to a Festival meeting would be most welcome. Once again contact the Waterloo Action Centre for details at 14 Baylis Road, SE1, tel. 261 1404.

FESTIVAL



Bert's boots

Since our last report on the Albert Football Club, in September, the team has proved its' worth in the London & Kent Border League, one of the best Sunday morning leagues.

In its first season in the Junior 2 Division, the club won its first 3 league games, as well as 3 pre-season friendlies. The first defeat was in a cup match for the Mary Wiltshire Shield, against Marlboro, the Junior 1 leaders, but it was close. The team moved on to win 6-3 against the previously unbeaten Northbrook Reserves, but the price was high: John Madden broke 2 bones in his shoulder, and was not able to play for 4 months. Despite this, in the next game Barry Fitzsimons scored 8 times to prove his place as the league's leading goalscorer, and giving a record win of 17-0 against Dacre Park Reserves.

In the Junior Cup, the team won its first game against Paxton Priory, and went on to win against Northbrook, a Junior 1 team. In the quarter finals, Albert F.C. again met Marlboro, and despite an early lead, lost 4-1, disappointing the strong local crowd watching.

Meanwhile in the league, a further 4 games proved to be wins for the team. But they lost their first point of the season by drawing 1-1 with Thames Water United. This was despite numerous shots which almost got there. In the remaining 6 games, they only lost one match, to Beckenham Lions, 1-3.

The team for this first successful season consisted

CLASSICAL

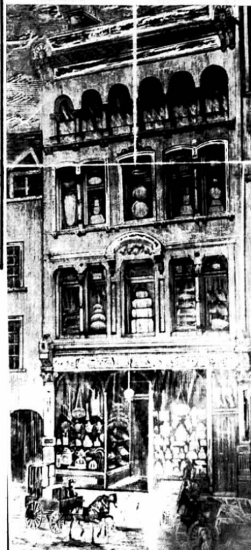
The next concert by the Lambeth Orchestra conducted by David Paul Cathcart will be on Saturday 17 May, 7.30pm, at Holy Trinity Church, Clapham Common. Tickets £1

Programme

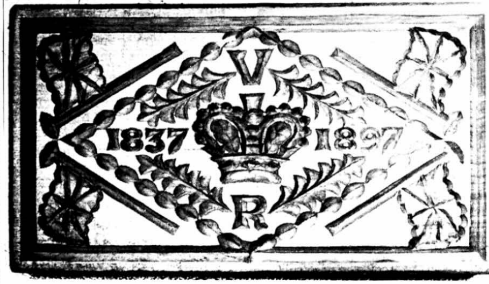
Tchaikowsky	: Overture on the Danish National Anthem.
Grieg	: Piano Concerto Soloist/Peter Levitt.
Bruckner	: Symphony in F minor (1863) First British Performance.

Colombo Street Sports and Community Centre

MEETING ROOMS AND HALL FOR HIRE FOR SOCIALS ETC.
REGULAR ACTIVITIES INCLUDE: WEIGHT TRAINING, YOGA, KEEP FIT, BOXING, KARATE, BADMINTON, SING-A-LONG CLUB...
VARIOUS "TASTER" COURSES ARE CURRENTLY RUNNING.
WHY NOT VISIT US, AND FIND OUT MORE?
(and also admire our new till!)
See Jim or Bob at the Colombo Street Centre, SE1.



Below: Hand carved shortbread mould To celebrate Queen Victoria's 60th Anniversary





Edna Mathieson, a member of the Bermondsey Labour party, explains the thinking behind her political activity.

I am a humanist and a socialist. To me that just means that I believe there is only one life - this one; and that the chances of there being some super-being are very remote indeed. So then, it follows, for me, that life, in all forms, is precious and that the centre of attention is this world. Therefore, any action or institution, which helps to achieve the full potential of any living thing, is to be encouraged; actions and institutions which do not, should be discouraged.

Women's Rights

As a result I support organisations like the Hunt Saboteurs and movements like the women's rights movement, as I would support any which argued for the rights of any living thing. Because to treat people differently for no other reason than they have more, or less money than another affects very much the achievement of an individual's full potential. I believe in equality and so I am a socialist as well as a humanist. I therefore am a member of my local Labour Party and although many may believe that it has not been as active as it might be, I think there's every chance that it will become far more active very soon.

Along with other women in Southwark, I would like to have, in the Council, a Women's Rights Sub-Committee, as in Lewisham. On Lewisham's sit 6 councillors and 12 women drawn from different women's groups in the borough. We have already had a very preliminary meeting to discuss it.

SOAP-BOX

Education

There isn't enough time to, actively, support all organisations, so I have chosen to do the things that I think I can do best. I am involved, therefore locally, in activities which are, mainly, to do with education.

We set up the Carnival of Education last May in Christchurch, Blackfriars Road; this year we're holding another at the other end of North Southwark, in Rotherhithe, on the 14th June.

Bermondsey at War

It seems to me that North Southwark is very rich in history, so along with some members of the Bermondsey and Rotherhithe Society, we thought we'd have an exhibition called 'Bermondsey at War'. We have some exhibits coming from the Imperial War Museum, and we are taping local people's memories. These tapes will be available for any visitor to the exhibition to hear; and, with ILEA's help, we hope to have them printed.

The idea behind all this, as with most oral history, is to try to re-create history as something which people other than Kings and Queens had a hand in making. We hope too that this might help bring back the sort of

civic pride that Bermondsey had in the 20's and 30's.

20's and 30's

Talking of the 20's and 30's, it is rumoured that the Solarium in Grange Road - (the first ever public health centre) - might be pulled down; or left to continue to rot. Another group of people, drawn partly from the community health council are considering how it might be used to serve Bermondsey as well as it used to do. We see the Solarium as an essential part of Bermondsey's history, and we don't want to lose it.

Bereavement Counselling

I have put recently to two of our Councillors, the possibility of setting up a Bereavement Counselling Service, and another service which helps families cope with severely physically handicapped members. Both services exist in some other boroughs. Of



course, any service will cost money - Lewisham has put £3000 towards the family disablement scheme - but there are usually ways around problems. Our hard-of-hearing day centre for example, was turned down by Southwark Social Services. And, too, Mrs Thatcher's ruthless monetarist policy will not last forever - (although sometimes it feels as if it has lasted forever).

If any of you are interested in any of these things we're doing, here, in North Southwark, perhaps you'd like to contact us. Obviously you don't have to be a humanist or a socialist to realise that the area is dying, and to care that it is.



GOODBYE to your housing rights

The new HOUSING BILL will change your rights if you intend renting your home from a private landlord. The Bill is being rushed through Parliament very quickly and will become law soon.

What this will mean

Under the Housing Bill your new landlord will be able to give you what is known as a 'shorthold agreement'.

This will enable your new landlord to charge what he likes until the rent is registered - this may take up to four months - and you will not be able to claim back any excess rent you have paid meanwhile.

It will also be possible for the Secretary of State to remove the obligation from your landlord to register the rent at all.

You will have no security at the end of a fixed period and the landlord can evict you with three months notice.

You will have to pay two months' deposit before moving in.

A new form of tenure

All this means that an entirely new form of tenure is being created, outside of rent control and with no security of tenure for the tenant.

Rents will soar

Your landlord will be able to register your rent every two years, instead of every three years as at present. This means your rent can be put up more often.

Information

The right to obtain information from your land-

GLC UP IN THE AIR!

The GLC is considering spending over £1 million on a flyover at the junction of Stamford Street, Southwark Street and Blackfriars Road.

The scheme designed to ease rushhour traffic at the junction has been opposed by Southwark Council because of the serious side effects it will have.

The fly over will start just north of Upper Ground and finish just north of Nicholson Street, by the Prince William Henry Public House.

Residents of the area will know that congestion in Stamford Street has more to do with the fact that the road has been almost constantly in a state of disrepair and having work done on it, than other factors, although with the closure of Tower Bridge, more heavy traffic has been using the route to get to Southwark Bridge.

The flyover, if given the go-ahead, will mean the re-siting of the Pelican Crossing outside the Prince William Henry, where currently over 500 people an hour cross in peak times. This is because the flyover ends just north of the present crossing, and it is anticipated that traffic leaving the flyover will be travelling faster than if driving normally along Blackfriars Road, and there is therefore a greater risk of failing to stop. The fact that the crossing was sited where it is in the first place, because of it being the best location for a crossing bearing

in mind pedestrian movements has been ignored. More accidents seem inevitable if the flyover goes ahead.

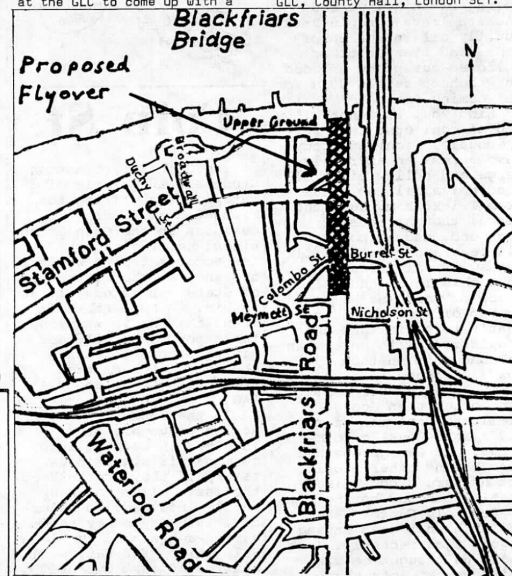
A second worrying aspect is the noise likely to be caused by heavy traffic struggling up the ramps with consequent increased exhaust fumes, which may be good business for the workers of Conoco House, but isn't going to do their health much good. The irony of this being adjacent to the Department of Health is not lost either.

There is also the risk of increased rat-runs, which is supposed to be what the flyover is designed to prevent.

The flyover scheme is just another example of the complete failure of the present regime at the GLC to come up with a

Transport Policy. All they care about is speeding their friends from the Tory suburbs to their desks in the City and to hell with the people who have to travel by bus or who live in Inner London. Hopefully the scheme can be delayed long enough for Horace Cutler and his motley crew to be kicked out of County Hall and banished back to the suburbs along with their commuter friends.

Anyone wanting to know more about the flyover proposal should contact the planning department at Peckham Town Hall tel. 703 6311. Those wishing to oppose the scheme should write direct to the Controller of Planning and Transportation, GLC, County Hall, London SE1.



NELSON'S COLUMN

JAMES NELSON, author of 'NO MORE WALLS', starts a regular book review column with a look at 'A SENSE OF ADVENTURE', by Dolly Davey - Waterloo resident and Coin Street activist.

I found this book very good the whole way through from the beginning with the introduction which was excellent with great detail. I could identify with parts of the book relating to

my own life and my mother's. The description of the bicycle ride and the train is very humorous.

There is a very unusual conversation towards the end of the book and it could be off-putting in some ways to some people who read the book. Dolly talked about also getting on with life and that sums up the book for me as also the pieces written on Coin Street.



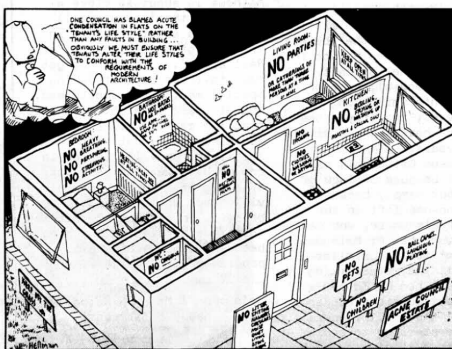
This is a new feature for SE1 and I hope to bring to the community just how important it is that we keep together to help each other. That is why this column was started to give give reviews and information on community publishing. If you think you can write poetry or short stories contact SE1.

BLACKFRIARS SETTLEMENT WORK CENTRE FOR THE DISABLED

14 BAYLIS ROAD, SE1

PLEASE HELP!

WE NEED YOUR UNWANTED ARTICLES, CLEAN CLOTHES, BRIC-A-BRAC, BOOKS, SMALL FURNITURE - ALL JUMBLE TO SELL IN AID OF OUTINGS FOR OUR DISABLED MEMBERS PLEASE BRING WHAT YOU CAN OR WE CAN COLLECT - JUST PHONE 928 7525



Is your flat DAMP? If so, you might be interested in a campaign which was first formed in 1979. The campaign has produced a CHARTER which aims to: increase people's awareness about the problems that damp can cause; to try and get councils to deal with dampness; to show that dampness is not the tenants fault and to try and get some basic guidelines drawn up so that damp is got rid of in future by building properly constructed flats and houses.

If your flat or estate has damp problems then you might like to send off for some information the Campaign has produced - it is a set of papers about all aspects of dampness and getting rid of it.

It includes information about campaign strategies; demands and victories; how repairs are paid for; direct works and the private contracting system; health and housing; joint action by tenants and building workers in Sandwell which succeeded in getting something done, and the limits and potential of legal action on dampness.

All this information is available from SCAT (Services to Community Action and Tenants) 31 Clerkenwell Close, EC1. The papers are available to Tenants Associations for 80p and to individuals for £1.20. Cheques or postal orders should be payable to Services to Community Action and Tenants.



WATERLOO WOODY

Sometimes I think finding a new house is easier for us woodpeckers than it is for you common mortals (or 'Homeless Sapiens' as we call you). I suppose that is why, around this time of year, while you lot are having to do your Spring-cleaning, we woodpeckers leave our old nests and fly off in search of some dead tree or other hollowed-out piece of wood in which to settle down for the coming year.

Mind you, it's not all a bed of conifers. Last week my cousin, Richmond Woody, came across an extremely large and hollow piece of wood not a million miles from Twickenham. Just the place, thought cousin Richmond, and he pointed his beak and started drilling away. Only trouble was that this large and hollow piece of wood was balanced on top of some shoulders. What's worse is that these shoulders - with more than the odd chip on them by now - belonged to a well known local councillor: none other than George Tremlett, Chairman of the GLC's anti-Housing Committee. Old George doesn't mind boring other people but he sure didn't like cousin Richmond boring him!

Poor old George - he really hasn't been having a good time recently. Just when he thought he was going to get into the Guinness Book of Records for slashing the GLC's Housing Budget and ending its new-build programme after only three years in office, he has found himself upstaged by Secretary of State Michael 'Goldilocks' Brilliantine who, at a stroke, has halved what remains of the GLC's Housing Budget. Now there isn't even enough money to lend to would-be Council House buyers! What's more, Brilliantine has slashed all the Borough Council Housing Budgets at the same time!

So poor old George won't be getting into the Guinness book and there really isn't much left for him to do at County Hall. Which is why, I suppose, my cousin found him down Richmond way.

Only thing is, I'm not sure our George is going to feel at home in Richmond

for very much longer. It appears that the natives are getting restless because some rather unscrupulous people have hatched up plans for re-developing the Richmond area of the South Bank. And I have to tell you, because I know you would never guess, that the developers aren't proposing to plant trees that ordinary woodpeckers can afford. No, I'm afraid it's our old friend office-blocks again ...140,000 square feet of them. Stone the Crows (as we say), it's enough to blunt your beak isn't it?

W.W.



Coin St.

The Coin Street Action Group and the people of Waterloo are waiting for Michael Heseltine's decision on the Coin Street sites. He received the Inspector's report weeks ago and, as the Secretary of State, it is now all up to him. We hope the delay means that he is studying the report carefully and giving proper attention to the evidence submitted by the Action Group and the AWG.

In the meantime the Action Group are still involved in raising funds, as money is always necessary if they are to keep the issue alive and keep people informed. On Saturday, 19th May, they held a Bric-a-brac and Jumble Sale which went very well and raised just over £100. Many thanks to all who helped.

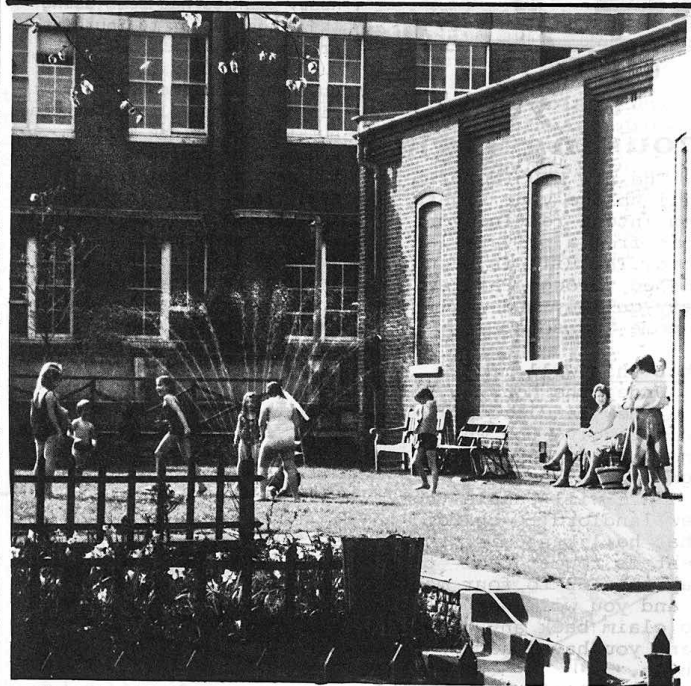
Little Dorrit Playground

Southwark Council's Libraries & Amenities Committee have approved a scheme to improve and extend the Little Dorrit playground off Borough High Street. (It is behind the old Nettlefold and Moser site, and next to St. Saviours School.)

As well as several grass areas, there will be a paddling pool, a shady paved sitting area and additions to the existing playground facilities. Apart from the usual swings slide and climbing ladders, there will also be a climbing wall and rebound wall for ball games. It is also proposed to have some large, 'design and display' plastic animals.

All this depends on finance - about £108,500 - being available, but at least some progress should be made shortly with money left over from other schemes which have fallen behind schedule.

Elsewhere in SE1, Dickens Square is due to be laid out as temporary open space; Emma Cons Gardens on the corner of Waterloo Rd and the Cut is being improved for £5,300, as is the Ufford St. Open Space, costing almost £15,000. Work is also going ahead on the Lambeth Walk Open Space, including a five-a-side football pitch, landscaping and asphaltting around the playbuilding.



Kids in the Garden in Copperfield St. enjoying the sprinkler. The Garden recently received money from the Council's Environment Fund for seats, trees, shrubs and plants. Looked after and enjoyed by local residents, the Garden is an oasis in North Southwark.

Rally for the Single Homeless

A LOCAL ISSUE HAS TURNED INTO A NATIONAL DEMONSTRATION AS a result of a series of meetings at London day centres for the single homeless, including the North Lambeth Day Centre in Waterloo, in January this year.

In the first ever demonstration of its kind, single homeless people from Scotland, Wales and many different parts of England will converge on London on Sunday May 11th to march from Speakers Corner to Trafalgar Square.

The aim of the rally is to draw public attention to the scandalous conditions poor single people are forced to live in and to demand their rights to decent homes and health care.

There are two hostels in the Waterloo area, one for 480 men

and the other for 44 women; and many people are sleeping rough in the area. It's a quick walk over the bridge to Charing Cross arches where men and women are sleeping, one night last week there were 70 people at that point alone.

Southwark and Lambeth have always had a homeless problem as there are two reception centres for men, one housing 300 to 700 men, the other 40-60, and the women's one in Blackfriars Road. Out of all this sprang the idea for the rally, organised by CHAR, the Campaign for the Homeless and Rootless, on May 11th.

The problem of decent housing for all in London is new, it dates back to the 19th century. The exact numbers are not known but those with no

accommodation are thought to number more than 1000, whilst those in unstable, institutional or emergency accommodation certainly exceed 2000.

Very few beg from passers-by or create a public nuisance. Many have ordinary desires to get a room of their own and a reasonable life, but it doesn't take long for isolation, unemployment and homelessness to wear down their capacity to deal with these problems on their own. The North Lambeth Day Centre is intended to provide just such help. The national rally on May 11th is the first demonstration that single homeless people are prepared to take action to demand their rights. Assemble at Speakers Corner, Marble Arch at 1pm.