



1980 : SLUMS IN SOUTHWARK

A SOUTHWARK ADVICE WORKER WRITES :

A recent examination of selected areas of Arundel Buildings permitted a simply expressed description of their condition: 'a statutory nuisance' and 'unfit for human habitation'. Both meaningful phrases in legal terms which are not adequate to convey an idea of what the buildings are like and what it's like to live in them.

Arundel and nearby Brighton Buildings, are turn of the century tenements near the junction of Tower Bridge Rd. and Grange Road. The London Borough of Southwark, who own and manage them, have, in recent years, used them to house people, otherwise homeless, to whom they have a responsibility under the Housing (Homeless Persons) Act 1977. Within the Housing Department these people are known as 'first stage homeless' and are put there as an 'incentive' to be good tenants, in which case they may go on the transfer list after six months.

Contrary to Southwark Council policy, the Housing Department officials have been putting homeless people in hard to let property which, since I have not met any tenant there who was not previously homeless, I believe has been reserved for them. The Homeless Persons Act obliges the housing authority to make only one offer.

The local environment is run down and unattractive, the open space available to residents, many of whom are children, is poorly maintained and, on the occasion of my first examination, was littered with household rubbish!

The external refuse chutes which serve the flats end in bunkers which were two-thirds full of rubbish. Since the wooden lids were damaged, smells emanated and refuse had been distributed by the wind. The common open-air staircases are poorly maintained with damp and dirty wall, ceiling and floor surfaces and smelt of urine.

One flat had severe rising dampness, rampant condensation and considerable mould growth. That's not to mention minor defects like ill-fitting doors, leaking pipes and holes in the mortar. It had been in that state for most of the nine months the tenant and her two children, aged three and two years, had lived there. Unfortunately, the defects are typical of other flats within the block.

Happily that particular family have since been moved out; and after my representations to the housing department efforts have been made to clean up the area surrounding the block.

The only original tenants of Brighton Buildings have less reason to be happy. Homeless single people drift into the neighbouring flats at night and the tenants believe they may have been responsible for fires and two flooding incidents which they have suffered recently. The derelict appearance of the block also encourages vandalism.

CONTINUED ON PAGE 3



A view of Brighton Buildings. Are these fit to let?

CUTS

MONTH OF ACTION AGAINST THE TORIES

CUTS

The anger is growing in working-class areas of every major city in Britain against the Government's cuts in vital public services, its job-destruction policies, and its attacks on trade union organisation.

In Southwark, a series of events is planned, from a Carnival against the Cuts, with stalls, theatre groups and games on November 1st, to a mass lobby of Southwark's Labour Councillors on December 1st. These events are being organised by Fightback in Southwark, the CO-Ordinating Committee against the cuts, together with the Southwark Trades Council.

In Lambeth, the major event is to be a Rally against the Tories on November 11th, with Trade Union and Labour leaders speaking, and a film show.

Throughout the month, meetings and film shows, and other events are being arranged to help build up the campaign for a positive alternative to policies based on greed, and for an end to what has been called 'Government by the rich for the rich'.

Every organisation and group in both boroughs is being urged to show its disgust at this Government by using its meeting during this month to discuss the public spending cuts unemployment and the so-called 'Employment Act' - and how to defeat them. Fightback in Southwark and the Southwark Trades Council are offering speakers to any group that wishes to get this debate going among its members, and to inform people about what actions are being planned.

If your group wants information or a speaker, contact: Peter Esam, Chairperson, Fightback In Southwark, c/o Lansbury House, 41 Camberwell Grove, SE5.

MONTH OF ACTION EVENTS

OCTOBER 30 - Rally against Docklands Corporation
NOVEMBER 1st - Carnival against the Cuts
NOVEMBER 4th - Film Show
NOVEMBER 11th - Rally against the Tories
NOVEMBER 11th - Film Show
NOVEMBER 22nd - Great South London Demonstration.
Elephant & Castle, 12.30
March to Clapham Common via threatened public services such as Walworth Project, and Belgrave Children's Hospital.
DECEMBER 1st - Lobby of Southwark Labour Group of Councillors.

WRITE

to SE1. We want to hear your news and views. Send your letters to: SE1 Community Newspaper, 12 Maymott St, SE1, or give us a ring:

928 1643

NEIGHBOURHOOD BASED ARTS CENTRE on Southwark Housing Estate needs worker with Community/ Youth Work experience and skills in music and drama. Salary £5300 (under review) Ring 703 0415 for job description and application form. Closing date 14th November.

HELP FOR THE MENTALLY HANDICAPPED

The project acts as a link between various activities for the mentally handicapped and their relatives. Each group is managed by its own Committee and we try to ensure that parents participate in some way. We send out a newsletter every 2 months containing information and views on the mentally handicapped.

SOCIAL ACTIVITIES

Weekend clubs are held every other Saturday and Sunday to provide social activities for 30 children. There is also play facilities for 16 children on Tuesdays and Thursdays after school.

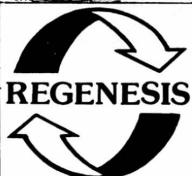
During the Easter and summer holidays groups made up of 15 children and adults take weekend breaks away with the volunteers. Playschemes are also organised for up to 40 children at a time.

Mother groups meet to share problems and ideas and the parents fund-raising group plans regular social events for other parents whilst raising money.

My job involves supporting the various activities and also visiting parents to find out what the needs are for both the mentally handicapped and their families. Linda Anderson Community Worker



The only other interesting thing happening next month is a revival of Pinter's funny, strange play "The Caretaker". This is noteworthy as the cast includes Warren



Recycled Paper

GREETINGS CARDS for XMAS/NEW YEAR, WRITING PADS, ENVELOPES etc

ALL ON RECYCLED PAPER at your local workers co-op. We also supply recycled duplicating and printing paper at low prices.

SAVE TREES AND MONEY.

All our products are 100% British.

TRESS HOUSE, 3-7 STAMFORD STREET, SE1
01-633 9557

NEWSAGENT OF THE MONTH



WELFARES Newsagents has been in Great Suffolk Street in North Southwark for 35 years. Before that the family owned a shop on the other side of the road. There's another branch too at 2, Borough High Street. The Great Suffolk St. shop has been selling SE1 for several years now.

ARTS REVIEW

by Tony Dunham

Romans in Britain - rampant critical myopia

In spite of the sad, rampant critical myopia which has greeted "The Romans in Britain" (by Howard Brenton-Oliver, National Theatre), I can assure anyone who isn't a fully paid-up member of the Festival of Light that this epic play is a significant event, not only for the National, but also for the future of theatre - and it's a very good play too!

It has also, inadvertently, provided Sir Horace Cutler, everyone's friend, and Mrs. Mary Whitehouse, everyone's guardian angel, with the opportunity to prove publicly, just how stupid they can really be. As a leader in the News of the World noted recently, if the play is that bad then audiences will show their disapproval by staying away.

All performances of "The Romans in Britain" for November are sold out and there are rumours that tickets are being offered and bought for grossly inflated prices on the black market.

The LONDON FILM FESTIVAL runs from November 13th up until the 30th, and there are lots of goodies on, so shoot along to the National Film Theatre early on November 8th, when public booking starts

SE1 would like to hear from any groups in the area who would enjoy some form of publicity in this column.

... SE1 TENANTS' NEWS ...

Tenants take over GLC sales block

Most of the 60 flats at Kilner House, near the Oval, Kennington, have been occupied by 150 squatters in an attempt to stop their sale by the GLC.

Kilner House is part of the inter-war built Kennington Park Estate. Tenants had been informed that once the block had been modernized, they would be moved back into the flats. The joy of tenants was dashed when, earliest this year, the GLC announced that the flats were to be sold to private buyers at prices ranging from £19,000 to £25,000.

A spokesperson for the London Squatters' Union 'Squat Against the Cuts Campaign' says - "The GLC's decision to sell Kilner House has caused heartbreak to those tenants who were promised that they would move into Kilner House, but on top of this, it's a crime that the GLC should even consider selling homes when, in London: 17,000 families become homeless each year; 220,000 people are on Council Housing Waiting Lists; and over 500,000 homes are either officially unfit, lack basic amenities or are in serious disrepair. As far as selling flat particularly in the event of attempted evictions.

More information can be obtained from 701-5611 or from no.1 Kilner House - where visits of supporters and friends are always welcome.

The strange case of the leader's absent-mindedness

A dramatic tussle has been going on in Southwark's Labour Group of Councillors - which has resulted in a significant step forward for the campaign against the sale of Council Houses.

The struggle began in earnest when the Labour Councillors, meeting on Monday 20th October, received a report from the Housing Committee, detailing proposals for the Council to comply with government orders on sales - the so-called "Right To Buy". The report made no suggestions as to how the government's plans could be opposed.

The Labour Councillors made two amendments to the report: (1) Everything possible should be done to slow down the sale of Council Housing. Therefore, each and every sale should be referred to Full Council for a decision.

(2) A leaflet should be distributed to tenants informing them of the dangers of buying their homes and the arguments against selling public housing.

The report was sent on its way to the Full Council Meeting on the following Wednesday -

Since then, support has been flooding in from such organisations as: the London Tenants' Organisation; the Greater London Association of Trades' Councils; Lambeth Trades' Council; Stuart Holland M.P.; Lambeth's Labour Group of Councillors etc.

The GLC have already started possession proceedings against the squatters, but on 22nd October, the High Court ordered an adjournment for 21 days.

Within hours of moving into Kilner House on 3rd October the Kennington Park Estate Tenants' Association had distributed a circular to all tenants on the estate supporting the occupation along with a letter from the squatters explaining the reasons behind their campaign.

The squatters are asking for the following forms of support:

*Messages of solidarity from organisations and individuals.

*Protests against the sale of Kilner House and other Council properties to be sent to the government and the GLC.

*Invitations for speakers from Kilner House to come to meetings

*Contacts from people who can help the Kilner House campaign, particularly in the event of attempted evictions.

More information can be obtained from 701-5611 or from no.1 Kilner House - where visits of supporters and friends are always welcome.

where it would fall to the Chairperson of Housing Committee, **Charlie Sawyer**, to propose the report and the amendments.

*Imagine the dismay of the anti-sales campaigners when Sawyer completely ignored Labour Group's wishes and proposed the report without the amendments. It was only when a motion came forward to reject the whole report that the leader of the Council O'Grady leapt up, sensing the danger, and claimed that he had been on the point of proposing the amendments agreed by Labour Group.

After the meeting, O'Grady claimed to have completely "forgotten" about the two amendments, until his memory was jolted.

It'll be a happy day for 'SE 1' residents when the ruling clique in Southwark Council shows such absent-mindedness over making cuts, or agreeing such ludicrous office schemes as Hayes Wharf.

Unfortunately, when it comes to issues such as those, they are only too efficient in carrying out their anti-social policies!

Brighton Buildings cont



Opinion SALES

Lambeth Council has adopted a policy of going slow on Council House Sales. The Labour Councillors apparently feel that if they refuse to carry out the policy altogether, Heseltine will simply step in and do the job for them. So instead, they're going to comply with the letter of the 'Right To Buy' law, while trying to ensure that the political fanaticism which lies behind the law is never satisfied in Lambeth.

The only disadvantage seems to be that it still means Labour Council's doing the Tories' dirty work for them. There is a growing feeling that it might be better to call the government's bluff - and see if they really have the nerve to come into Lambeth and Southwark and start selling off our public housing.

Specially in view of the stand taken by the Town Hall Unions. Both Lambeth and Southwark NALGO branches have now decided to block work on Council House Sales. And in Lambeth's case, their stand has already received the official support from their Union.

Strictly speaking, the motives are not to do with the politics of selling Council Houses. NALGO is protesting against the fact that no provision has been made for the extra staff required to process the 'Right To Buy' applications. They also point out that in the long run the scheme will increase unemployment, because a smaller stock of Council Housing will require less staff to manage it.

Whatever the reasons, their stand is an encouraging development in the struggle to keep Lambeth and Southwark's Council housing for those who need it - the homeless and poorly housed of South London.

What is most alarming is that Southwark Council have let Arundel and Brighton Buildings to the very people with the least financial and personal resources to cope with the poor physical conditions.

In fulfilling their duties under the Homeless Persons Act, Southwark have compelled people to live in premises which are arguably a nuisance under the Public Health Act 1936.

My efforts to deal with the authorities over these matters has been frustrated by their disinclination to return my telephone calls and by their aptness to be dismissive about the problem of dampness.

The following questions were put to Mr Synnuck, the District Housing Manager, on 30.9.80:-

a) Are units in Arundel Buildings to be relet when they become vacant. If so will they still be for 'first stage homeless'.

Otherwise, will they be allocated to people of any particular age, marital status, or category?

b) What repairs, remediation etc is planned for the block and the refuse chutes?

c) What plans are there for the land immediately surrounding the block?

The point about the flats may be let to is interesting. Although the current situation is intolerable, with central Government restricting new building it may be feasible to do repairs and make these properties suitable for a more sensible lettings policy. Possibly for students or young single people in housing need who also have the resources to cope.

Unfortunately, I am unable to report on future plans since, in four weeks, Mr Synnuck has not responded to my questions. Possibly he does not know the solution to these problems himself.

DO YOU REMEMBER RED BERMONDSEY?

The Bermondsey Labour Party is currently undergoing an exciting resurgence of the radical social spirit which inspired the early Labour pioneers.

The seeds of this spirit were sown seventy years ago. In 1910, the (West) Bermondsey Labour Party was founded by Ada and Alfred Salter and others. Within a few months, the Party's radical reputation was firmly established when Ada Salter was elected as London's first woman councillor.

A year later, in August 1911, Party members were prominent in the Bermondsey General Strike. Though the strike began in the Surrey Docks, it quickly spread throughout the riverside. Women workers and young girls at the cocoa, tin box and jam factories played a crucial role in its astonishing success.

anti-war

At the outbreak of the 1914-1918 War, the Party wrote a now-famous anti-war leaflet which was reprinted in 1½ million copies and distributed worldwide. By 1916, 19 Party members had been imprisoned and tortured as conscientious objectors.

Alfred Salter became Bermondsey's first Labour MP in the 1922 election. In the same year, when Labour won control of the Bermondsey Borough Council, the red flag was flown from the Town Hall to the outrage of high society.

Keeping up the party's feminist tradition, Ada Salter became London's first woman Mayor. In her humility, she refused to wear the Mayoral robes or chain of office.

slum clearance

At that time, Bermondsey teemed with tiny, damp and overcrowded dwellings, many of them dating back to 1700. So despite opposition and threats from the Tories, a direct labour organisation was set up by the Council to clear the slums and

build a garden city of cottage-houses. As a result of this initiative, by 1933, Bermondsey could proudly boast that it had cleared more slums than all the other London Boroughs put together. Embarrassed by the good wages paid by the Council to its direct labour employees and by the generous rate of poor relief offered to the sick and unemployed, the Tories ordered reductions and threatened the councillors with imprisonment and dismissal if they refused.

public baths

Since Bermondsey's 19,000 houses had only 113 baths between them, the Council built a huge public baths in Grange Road which were reputed to be the finest in Europe.



The Central Baths, Grange Road.

With tuberculosis widespread, the Council used its rate fund to send the most desperately ill to a Swiss sanatorium for treatment. Britain's first municipal solarium and mobile health clinics were also provided. Long before the NHS, Bermondsey people had their own Health Centre where they could see specialists and receive many different kinds of treatment either free of charge or for a nominal fee. Within a few years the infant mortality rate fell by 50% and the maternal death rate even dropped below that of posh Hampstead.

Apart from Southwark Park, there were no open spaces at all in Bermondsey. So the council proceeded to turn church graveyards into public parks. Flower beds and trees were planted all

over the riverside's grim industrial landscape. Within a couple of years, Bermondsey claimed more flowers and trees than any other inner city borough.

Not surprisingly, visitors came from all over the world - from Europe, America and the Soviet Union - to marvel at Bermondsey's remarkable socialist achievements.

Though it had vastly improved the lives of Bermondsey people, the Labour Council was constantly attacked by the Tories for "extravagant overspending" and "frittering away ratepayer's money".

However, the people's judgement was otherwise. In 1934, Bermondsey became the first constituency in the country to have 100% Labour representation - the MP, LCC member, plus every Borough Councillor and member of the Board of Guardians was Labour. The Party membership swelled to over 3,000 which amounted to 10% of the entire electorate!

strike support

During the 1926 General Strike the Council suspended itself and delegated its powers to an Emergency Committee. This committee liaised with the Council

to of action and put the Town Hall at the strikers disposal. For much of the strike, Bermondsey was a no-go area, barricaded off with roadblocks controlled by the Council of Action.

Despite their own sufferings, during the strike, Bermondsey people collected over £7,000 and Salter donated all of his MP's salary to aid the impoverished Welsh mining village of Blaize.

snub to royals

Throughout the 1930's, Labour kept up its militant tradition. In 1935, the Council refused to spend public money on a civic reception to celebrate King George VI's Jubilee and the Mayor declined an invitation to meet the King in protest against the squalor of the depression.

Princess Mary, another symbol of much hated privilege and charity, was booed and jeered on a visit to a local orphanage. Defying even Labour Headquarters, the Party held fund-raising campaigns to buy milk and medical supplies for the Spanish Republicans and the victims of Nazi persecution in Europe.

A march by 'Mosley's British Union of Fascists' in 1937 was routed by a combined Labour Party and trade union counter-demonstration as it attempted to cross Tower Bridge into Bermondsey.

Then came the 1939-45 War and Bermondsey's baptism of fire.

After it was all over, Labour's dream was in ruins and its pioneers such as Albert Henley and Ada and Alfred Salter were dead. And with their death, sadly Bermondsey's tradition of radical socialism faded away. However, it has not been lost forever. Thirty-five years later the militant tradition they established is at last enjoying a long overdue revival within the ranks of the Bermondsey Labour Party. If you would like to become a part of this tradition and join our struggle for a socialist Bermondsey and a socialist Britain, write to: Peter Tatchell, Secretary, Bermondsey Labour Party, 133 Lower Road, SE16.

Bert's boots



Since my last report, the team played Morley Tigers in the Mary Wiltshire Shield and although Morley play in a division 4 higher than Albert, it was Albert who led 2-1 at half-time. In the second half though, Morley's experience showed and they eventually won 6-4.

Despite this cup setback, Albert continued their success in the league and although they lost 3-2 against Cambridge Athletic, Albert were awarded the points because Cambridge did not fulfil one of their other fixtures on that day. In the next game we played Addington Reserves and after a goalless first half, Albert went in to top gear netting 7 goals before the final whistle.

The next game was to be our toughest against the Junior Cup holders, John F. Kennedy. In a hard fought first half, Albert paid the price for slack marking and JFK went off at half time with a 3-0 lead. Albert knew that to save this game, they would have to make every chance count. Albert pulled a goal back when Barry Fitzsimmons scored from the spot after 15 minutes of the second half. It was Barry again whose head met Dean Scott's hard cross and rocketed into the net. Then with 10 minutes to go, Martin Alberton hit a fierce 30 yard shot which the JFK keeper had no chance of stopping.

These opening games have shown the emergence of two skilful and determined players - Martin Alberton, a newcomer to the side and John Madden, who you may remember, broke his collar bone last year and was not playing for 4 months.

Now onto a lighter note. The club is holding a Christmas Draw, the first prize of which will be £100. Tickets are on sale in the Prince Albert and your support would be much appreciated.

SAVE I.L.E.A. CAMPAIGN

TORY U-TURN

Only the Tories can do it - a U-turn and end up in the same direction!

You may have heard that the government had plans to break up the Inner London Education Authority. It's now almost certain that they won't. 1000s of groups, including Parent-Teacher Associations, school governors, labour groups and unions mounted a campaign against the break-up - and we've won. It's one of very few U-turns that Thatcher has been forced to make.

But the Tories don't give in that easily. A new way of distributing money from the government to local councils will come in on November 21st - or rather a new way of cutting the money we get. For the ILEA, it means a cut of between £30 million and £147 million. Supposing it's a mere £30 million, this is what happens:

Don't let them kid you that we need to 'save money' or 'pull our belts tighter'. The government is planning to increase the money to people they like - the Tory-controlled shires and, guess who, the Metropolitan Police, who stand to get an extra £50M. They try to dress it up as 'redistribution' or 'rationalisation' - but what it comes down to is an attack on working people and their children. We have beaten them over break-up, and WE CAN BEAT THEM ON CUTS.

MORE CUTS?

- NO free school meals
- NO school milk
- NO clothing allowances
- NO discretionary allowances - probably NO adult education at all
- A loss of 1000 teaching jobs, on top of the financial cuts
- huge cuts in youth clubs

The cuts are likely to be worse than this.

WHAT YOU NEED SUPPORT

More information from your union or from the Southwark campaign. All the local campaigns will be there, so your group can influence how the campaign goes.

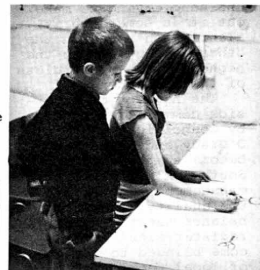
- Come and meet some of the people from your local campaign at the Elephant Carnival Against the Cuts, Nov. 1st, South Bank Poly. Students' Union, Rotary St, SE1.

Southwark Save ILEA Campaign, c/o Alison Tomlin, Blackfriars Settlement, 44-47 Nelson Square, SE1. Tel. 928 9521 or 261 1268.

association meetings, PTA meetings, and union branches. You can get a speaker and leaflets from the Southwark Save ILEA Campaign (address below).

- Support the Southwark Save ILEA Campaign. It's aims are to stop any cuts in education and improve the service. It is linked with all the ILEA campaigns in London. It's for anyone who's interested - parents, teachers, caretakers, school meals workers, evening class students, youth clubs, rate-payers.
- Get your PTA, tenants' association or union branch to send someone to a conference on the future of the ILEA (Conway Hall, Red Lion Squ., December 6th). The conference is to bring together everyone who's concerned about education.

Southwark Save ILEA Campaign, c/o Alison Tomlin, Blackfriars Settlement, 44-47 Nelson Square, SE1. Tel. 928 9521 or 261 1268.



WATERLOO ADVENTURE PLAYGROUND Baylis Road, London SE1 needs two PLAYLEADERS to complete a newly created team of four workers, one of whom should have a commitment to developing work with girls. Ideally, we are looking for energetic people who have some experience in play, some practical skills and a clean driving licence, although personality and an ability to work as part of a team relating closely to young people in a loosely structured environment is more important than these or formal qualifications. Six weeks holiday a year. Salary £4,260 - £5,106. Contact Anne Marie Shepherd, Blackfriars Settlement, 44 Nelson Square, London SE1. Tel. 928 9521

SOUTHWARK SCHOOLS

The ILEA has been running a 'review of Southwark Schools' (you might well think that means looking for ways to cut them). They say that the number of children moving to secondary school between 1979 and 1980 will fall by 40%, so that pupil-teacher ratios can be kept the same while schools are closed.

TRAVEL FURTHER

However, the birth-rate is going up again, and it's hard to re-open a school once it's been abandoned. Children would have to travel further to school, and parents will find it hard to get to meetings.

The ILEA's proposals would cut the number of secondary schools in Southwark from 21 to 16, including amalgamating Peckham School, Peckham Manor, Thomas Calton and Silverthorne into one school. Special schools aren't affected by the review.

SPEAK OUT!

Parents of primary and secondary school children should be receiving a leaflet from the ILEA outlining the proposals. If you want to criticise the proposals, or find out more, go to one of the public meetings:

Wed. Nov 5th, Peckham Girls' School, Peckham Rd, SE15. Thurs. Nov. 6th, Kingsdale School, Allyn Park, SE21. Wed. 12 November, Geoffrey Chaucer School, Harper Rd, SE1. The ILEA Education Officer will be at all the meetings. They start at 7.30pm. You don't have to be a parent to go to one of these meetings - anyone can go. If you can't go to a meeting, you can write to the Education Officer, ILEA, County Hall, SE1 to give your views.

The deadline for comments on the proposals is 28 Nov. The decisions will be made at an ILEA meeting on 28 Jan '81, 10.30am, open to the public. The committee is called 'The Development Sub-Committee' - what a joke!



SE1 RULES OK!

OVER TO YOU

If you have something you want to communicate to others or something you would simply like to get off your chest, then you can DO IT NOW! SE1 offers you the opportunity to put your feelings into print.

What you choose to write about does not matter so long as it's relevant to the SE1 area. News on events (or incidents), work (or lack of it), housing (or homelessness), local history (or geography), arts and entertainments - the list is endless.

SE1 is a community newspaper. That means it's for you. SE1 is run on a voluntary basis by people who live or work in the area. No-one makes any money (not even the people who sell it).

If you have any ideas, news or views, or would like to help in the production of the paper, you are welcome to come to any of the meetings at Meymott Street, or write to us, or just turn up over the paste-up weekend for the Christmas issue.

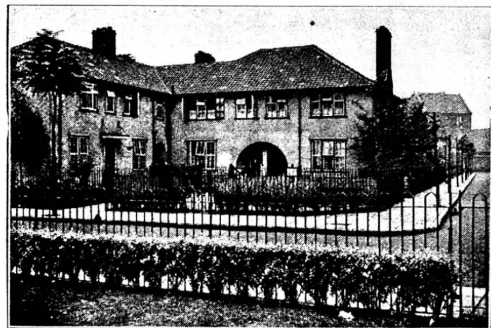
Meetings Monday 17th November and Thursday 27th November at 12 Meymott Street at 7.30.

Last day for articles to go in the December/January issue is 27th November.

Paste-up weekend is 27th and 30th November.



12 Meymott Street, SE1. tel: 928 1643



A view of some of the Salisbury Street Cottages

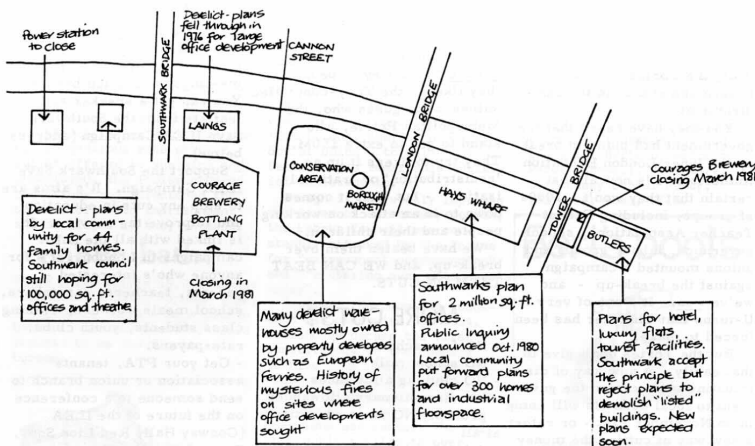
RIVERSIDE: back to the drawing board

WITH THE ANNOUNCEMENT of a Public Inquiry into the Hays Wharf site, and Southwark Council's refusal to give planning permission to the developers of Butlers Wharf last month, the scene is set for a complete re-think over the future development of the Riverside, from Bankside to the Rotherhithe Tunnel.

Southwark Council's approach to the riverside has always been one of a cross between a second hand car dealer and antique salesman - on the one hand trying to make out it is something it clearly isn't, and on the other selling out to the highest bidder regardless of the consequences.

The neglect of riverside communities needs by Councilors such as O'Grady and Watts has become symptomatic of Southwark's style of management - never mind the quality, look at the balance sheet. Their cash register minds have become blinded to the pleas of local people for more and better housing, industrial jobs and recreation facilities. Instead O'Grady and Watts have presided over the wanton destruction of the riverside communities, egged on by their friends in the city masquerading as 'caring' property developers. These wolves in sheep's clothing wouldn't fool a five year old socialist, but the benevolent dictators of Southwark have become a laughing stock as an easy touch, as they lick the boots of any banker or landowner peddling their wares.

Watts in particular has reduced 'planning' to little more than Santa Claus policies with what ever comes out of the sack first being handed out as the latest 'goody' to be played with for a while, and discarded when the next present from the developers comes along. Southwark's planning department has the appearance of an average attic - stuffed full of useless and worn out 'last year's models' discarded plans and plans put off until tomorrow. Presiding over this old playchest is Michael West, the Borough Planner. West who lives in Ipswich and commutes every day has been particularly vocal in trying



to belittle local people's views preferring to regard the riverside as a plaything for his own limp 'arty' ideas. Hopefully when the new Council is elected in 1982 West will be given a one-way ticket back to Ipswich along with the rest of the hangers on in his department such as Addison, Francis and Watkins.

So how will any change come about regarding Southwark Council's approach to the riverside? Certainly the public inquiry over Hays Wharf will give the community in North Southwark an arena to air their views on the riverside in the same way the local people in Waterloo did so successfully at the Coin Street Inquiry.

But in truth the only way to get a permanent shift is to get the Councilors at present misrepresenting local people out by the local elections in 1982. A recent membership drive by the Labour Party in Bermondsey has resulted in a sharp increase in membership, with the likely result that several of the Councilors who thought they were sitting comfortably are now likely to topple. Names such as Lee, Rowe, Knight, O'Grady, Kippin, Lees and MacSorley may, if we are lucky, become part of our unfortunate history. More members are needed to make sure of that process, but even if that hoped for change in faces occurs the local community should not become complacent.

The forces at work in North Southwark are much larger than just bad councilors. Large amounts of money are still to be made over property deals in the area and it will take a concerted campaign to make sure that once we have got rid of the present lineup of councilors that they won't simply be replaced by a new group who make all the right noises, up to the point when the going gets rough, as it undoubtedly will once the feathers of the property developers and city merchants get a bit ruffled, by murmurings from this side of the river.

Not that the new councilors will be alone. The elections for a new GLC take place next May, and it is likely on current showing that a radical Labour GLC will be elected to replace the Cutler nightmare. The London Labour Party at the manifesto conference on October 17/18th came out with the following statement - "A LABOUR GLC WILL NOT GRANT PLANNING PERMISSION FOR FURTHER OFFICE DEVELOPMENT IN THE CENTRAL LONDON AREA". The document goes on in a specific mention to the riverside - "In the interests of the local community and of Londoners as a whole the Labour GLC will use its powers to resist the expansion of office development, when homes, industrial jobs and recreation facilities are the development needed by those communities."

The previous Labour GLC administration had a policy of restricting office development, but buckled in the face of fierce protest from developers. The next GLC with its new crop of Councilors including a new councillor for Bermondsey - George Nicholson - have set their face against this re-occurring by making a firm and clear commitment in the Manifesto so that there can be no doubt about the policies they were elected on when the same pressure is applied, as it undoubtedly will be.

In the meantime the North Southwark Local Plan comes to its weary conclusion. Never can a plan have had so long and chequered a history. Hopefully changes in councilors and the GLC will render it impotent before it has been given a chance to operate, but the battle to get local needs accepted by Southwark Planning Department must go on. This does seem rather like one of those games when you give the baby a rattle only for the rattle to be thrown on the floor with the expectation of it being picked up again, but just as babies learn through experience, perhaps it is not too much to hope that one day the Southwark Planners will learn that what they are doing to North Southwark is completely unacceptable.

~ » < ~

•HEALTH PAGE•

EVER WONDERED ABOUT ACUPUNCTURE?...

I attended a talk on Acupuncture at a Womens Health Group meeting last year. My interest then was academic. It had not occurred to me that Acupuncture had anything to offer me.

RESIGNED TO PAIN

On the basis of what I learned at the meeting I decided that it was worth trying. I had very painful varicose veins in my right leg. My doctor had given me an elastic stocking which was so uncomfortable that it was no help. The other available treatment is an operation or injections. I know people who have tried both and did not think either would help so I was resigned to living with the pain.

Often by the end of a day I could hardly bear to put weight on that leg. Apart from this nagging pain and the tiredness and irritability that went with it I suffered from poor circulation. My feet and hands would numb from cold very easily and I often had chilblains.

EXAMINATION

The treatment consisted of a preliminary consultation, lasting about 2 hours, when the practitioner takes full details of symptoms and tries to get some idea of the patient's personality. There is also a brief physical examination to check blood pressure etc.

The acupuncture pulses are then taken. These are not connected with the pulse normally taken but are places where the body's natural energy paths come to the surface and can easily be read. The pulses tell which energy paths are functioning as they should and which are not.

SHORT & MILD

When the acupuncturist has all the information required treatment can begin. This is weekly at first becoming less frequent as progress is made. Each treatment session lasts about 1 hour. The pulses are taken at every visit, before and after the needles are used. Often the needle points are warmed first by a herbal preparation. The points at which needles are inserted vary but most are in the hands or feet. Acupuncture needles are very fine.

RELAXED

During a session usually works on a principle of no more than 6 or 8 needles helping the body to help itself and on a prevention rather than cure basis. A really healthy person is far less likely to be attacked by infection etc. Apparently in ancient China the acupuncture doctors only received payment while their patients were well. If the patient became ill they had failed and were not paid until they had put things right.

AMAZED

I did not expect to see any immediate improvement but was amazed to find that after the first visit my hands and feet were warmer! After 2 or 3 my leg began to improve, significantly after 6 and after about 10 I could forget it. I carried on with the treatment for a while mainly because I felt so much better generally and because I was afraid that if I stopped my leg would hurt again. It is now about six months since my last treatment and I have had no more pains.

BODY HELPS ITSELF

It has been suggested to me that this was a type of "faith healing" or a case of mind over matter but as I was fairly sceptical to begin with and had very difficult

physical symptoms I do not accept this argument.

Acupuncture, like many "alternative" medicines

helping the body to help itself and on a prevention rather than cure basis. A really healthy person is far less likely to be attacked by infection etc. Apparently in ancient China the acupuncture doctors only received payment while their patients were well. If the patient became ill they had failed and were not paid until they had put things right.

Western medicine seems to prefer to treat the illness, not the patient. In 12 years the only solution to my varicose veins, offered by a doctor was an elastic stocking. Ten sessions of acupuncture cured the painful veins in my leg and improved my overall circulation system. It is very unlikely that the problem will recur.

If it does, one or two more treatments will probably put it right again. I do not think that the treatment cost any more than I was spending on support tights. I am now convinced that acupuncture has a lot to offer and could help many more people who are suffering needlessly.

"Nerve" pains of all descriptions, menstruation problems, depression, asthma, eczema and many other problems which modern medicine can perhaps control but not cure, could often be helped by acupuncture, leaving the patient free of drugs etc.

The main problem with acupuncture is that it is not available under the National Health Service and so practitioners charge fees.

SHOULDN'T WE BE DEMANDING THAT THE NHS WIDEN ITS SCOPE AND PROVIDE TREATMENTS LIKE ACUPUNCTURE WHERE SO OBVIOUSLY NEEDED?

SKIN COMPLAINTS

If you want to find out more about acupuncture come to the Skin Complaints Group meeting on

Monday 10th November 7.30pm

Waterloo Action Centre. The skin complaints group meets to share experiences of different kinds of skin complaints and to find out about different treatments.

COMMUNITY •• CARE CENTRE

Last Thursday (16 Oct) there was a fantastic party at St Thomas' Community Health Council to celebrate getting Inner City money for a Community Care Centre at the Lambeth Hospital Site.

The community care centre will be the first of its kind in an urban setting. It will have 20 beds and 35 day places. It will provide employment for about 50 people.

The Centre is due to open in 1984 but the Area Health Authority and Lambeth Council will need to be constantly pressurised to keep up with this schedule. The site has been left empty for too long already.

A Joint Working Party will be set up with representatives from the community and the health service to work on the finalising of plans and their implementation.

More detailed information about the plans will be in next month's issue of SE1.

PREGNANT?...



A chance to meet other pregnant women and women with new babies... The first meeting will be on Monday 10th November at 2p.m. at the Barley Mow Clinic.

You may have views about ante-natal care in Waterloo... what's good about it, or bad about it... you may want to make a few friends. Come along, bring a friend, Small children welcome.

BAYLIS ROAD (half) OPEN SPACE

JULY'S EDITION OF SE1 proudly announced details of Waterloo's new park. We are now sorry to report that the conversion will take much longer and will proceed in two phases:

sitting out area)	
under 5's playspace)	TO BEGIN BEFORE CHRISTMAS
landscaped area)	
floodlit football pitch)	
extension to adventure playground)	TO BEGIN 1981/82

The delay is due to insufficient money available from Lambeth this financial year. However, by waiting for a road closure order to go through, space will be gained and better used, as the five-a-side football pitch will now be sited on the other side of the road that is to be closed.

All we can hope for is that Lambeth lives up to its present intention of completing the two phases by March 1982

SE1 BIKE RALLY

The London-to-Brighton bike rally held on 6th September in aid of two South East London community newspapers, SE1 and Walworth Inprint, was a great success and is expected to raise - once all the money is collected - an estimated £1,000.

34 riders in all set out from the Oval and apart from a few minor mishaps along the road - and a couple of people who got lost - everything went according to plan and everybody arrived in Brighton safely.

September 6th was a warm sunny day and although riding the 55 miles required a great deal of mental and physical effort, everyone agreed afterwards that the venture was an enjoyable and pleasant, if somewhat painful, day out.

All money raised will be divided equally between the two newspapers, so the expected £500 will be about the same as SE1 received from a similar

event last year. But because of SE1's dire financial position and because of the all-too-familiar effects of inflation, it is not expected that this money will be sufficient to keep the paper afloat for the coming year. It is therefore necessary to organise further fund raising events in the coming months to provide the extra badly needed cash. ANY suggestions gratefully received. In the meantime SE1 needs all the help it can get. So if you have promised money to any of the riders, please pay up promptly - I can assure you they earned it!

Also, don't forget that SE1 needs practical help as well as cash. If you're willing to help in any way, please don't hesitate to contact us and let us know what you are willing to do.

It needn't take up much of your time and you don't have to be an experienced print technician or a budding literary wit.

Walworth Project News

As predicted in last month's SE1, the Walworth Project Users Group had its success continued in compelling Southwark Council's General Purposes and Finance Committee to apply for a renewal of the Walworth Project's funding. The vote was taken at the committee's meeting on 8th October.

In fact the committee members didn't have much choice. Their colleagues in Labour Group had told them to "think again" after their decision earlier in the year to shut the community project down. The project includes a busy advice centre, community and youth workers, and an employment bureau for the retired.

But although the Labour Group's support may have changed the committee's decision - it didn't seem to have changed their minds.

Councillor McSorley, Chairman of the Committee, made it clear in introducing the item, that voting to make an Urban Aid application didn't really imply support for the project. It could be left up to the Joint Urgency Sub-Committee to give the Project a very low priority and ensure that application fails.

Councillor Watts - well known to residents of SE1 as Chairman of the Planning Committee - said that for his part nothing had changed, and he still opposed the Project.

Finally, the Committee did vote to put in an application - but immediately followed this decision with a vote that its other funding application, for an advice centre in Peckham, was more important.

So, although the application is going in, unless the Labour Group comes to the rescue again, it doesn't seem to stand much chance of success.

Good News?

GOOD NEWS for those who use Brennans Dentist, Liffs Chemist or Lewis Taylors in Borough High Street. The Government has thrown out a plan by Guy's Special Trustees to demolish the buildings and replace them with an office development.

The victory however had nothing to do with the Dentist chemist or shop. Such is the power of the landowner and so flimsy the law to protect ordinary people, that the battle for the protection of 37 - 43 Borough High Street



WATERLOO WOODY

As I was fluttering over the demonstration outside County Hall on October 1st to protest about the GLC selling off prime property development sites in London, I caught sight of the rather shady looking auctioneers brought in by the GLC to auction off their property. When I approached these rather strange looking characters (both riding unicycles as they can't afford the two wheeled variety) I found them quite open to explaining their presence outside County Hall:

"Let me introduce myself; my name is Mr Shady of Shady & Shady, auctioneers to the GLC. Although this isn't our normal line of work, the GLC asked us to help out, like, and run the auction for 'em. So we thought we would start a bit early and make a few bob on the side outside County Hall. I mean, Coin Street, that site could make somebody a mint couldn't it!"

And as an extra incentive, we have some very nice Swiss watches we are throwing in at hardly any extra charge. Nice bit of stuff here mate. And no problem with any of the riff raff who want houses instead of offices. Fanatics! I mean, think of Centre Point sitting there all on its own. Give it some company, build more offices! So we reckon we should be able to carry out some nifty deals this afternoon for the GLC. They know a good profit when they see it. Hey, hold it a minute, it's the boys in blue. Mr Shady, I think we'd better scarper. If anybody needs us again, we'll be down Southend as usual next. Meanwhile, sorry Horace, but we'd better hop it. Do your own dirty work!"

W.W.

P.S. Shady & Shady are better known as Mitch and Andy of the ORIGINAL EXPLODING MIXTURE theatre group.



Riders gather at the Oval in preparation for the rally