



Squeals on meals prices up - people down

A MAJOR ROW is brewing over Southwark Council's decision to increase the cost of Meals on Wheels from 11p to 25p. This follows an increase last year from 6p.

Tenants associations are protesting at the increase, and a delegation led by Eddie Hart, Secretary of Dickens Estate T.A., is to go before the Council. Dulwich Constituency Labour Party have passed a motion condemning the increase and have called upon the Council to reconsider its action. Southwark Bermondsey Constituency will be discussing a similar motion.

Councillor Ann Stevens, who sits on the Social Services Committee, said at a meeting with tenants from estates in Bermondsey that "the increases were inevitable", and endorsed the Director of Social Services, Mr. Sellick's view that pensioners receiving

meals on wheels were being subsidised by pensioners who did not use the service.

A circular explaining the increase has been circulated by the Council. This links the Council's action to the Government's "Attack on Inflation". Other Boroughs have faced this problem in different ways. The price of a meal in Lambeth is 6p, in Lewisham 15p and in Hounslow 15p. Hounslow has a 7-day service and caters for 7,000 compared to Southwark's 4,000.

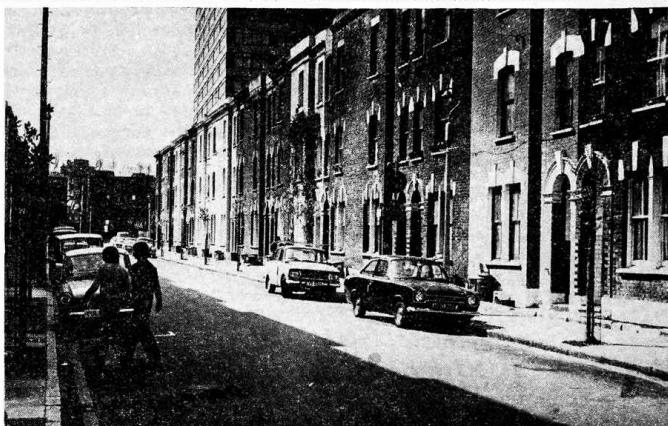
After the first week of the new charges 10%, or some 400 people, have stopped having the meals. Mr. Preston of Trundle House, Great Suffolk Street, a disabled pensioner, has stopped taking the meals and has written to the Council explaining his action. Another pensioner told "SE1" that at her lunch club, 10 people out of 50 had stopped coming.

Whether people will refuse the service after the initial reaction remains to be seen. Some Councillors and officials are openly saying that when people come to buy a chop, they will realise what good value the meals are. Local people are saying it is a strange Labour Council which ties its policies to the price of a chop rather than the needs of its less well off residents.



We
are now
on the
PHONE!

928
1643



Street saved!

PEARMAN STREET RESIDENTS ASSOCIATION have just heard the result of the 6-day Public Inquiry held in March 1975 at which they strongly argued against Lambeth Council's plans to demolish the street. The Secretary of State has now agreed with the residents and rejected Lambeth's demolition plans.

The majority of the people living in the street want to continue living there and many of the older residents were brought up in the street and have known the Waterloo area all their lives. However, as the Chairman of the Residents Association, Sonny Shama, said, "We do not consider winning the Inquiry to be the end of the matter because the Secretary of State's decision is only the first step in getting improve-

ments and repairs made to the houses in the street.

The Residents Association have asked Lambeth Council to consider Pearman Street as a Housing Action Area where special measures can be taken to repair and improve the homes. Barry Savage, the Secretary of the Association, said "We want to make sure we get the improvements people have asked for - hot water and bathroom etc.- as quickly as possible. We also want to make sure that those people who want to be rehoused can be, and we have been making this one of our top priorities since the Inquiry".

Public health

Lambeth's Planning Chairman Peter Lane told SE1 "we must get the Borough's Public Health Inspector's down there as soon as possible, see what needs doing, and ensure the landlords carry out the necessary repairs. I have asked the officers to see if the Council's own two or three properties can be used on a short-life basis."

Getting Pearman Street declared a Housing Action Area will take more time however, as the Council have just decided their HAA's for the next year to eighteen months and there is no money left for new ones like Pearman Street.

The Residents Association is contacting the Ward Councillors to ask for their help in all this and is also looking at other possibilities of getting improvements made. A general meeting will be held in early May to enable full discussion of the different possibilities.

Whose plans — whose gain?

Three very important planning proposals affecting the Waterloo area are now being considered by Lambeth Council and the GLC. They are for the David Greig site on Waterloo Road, the Shot Tower Wharf site (the Evening News site next to the National Theatre), and the Hatch Row prefab site at the end of Roupell Street.

The plans for David Greig's and Shot Tower Wharf have been put forward by private developers and naturally both include offices as the biggest part of the development, with some housing and open space as 'sweeteners' for the Council.

The Hatch Row proposal is for a student hostel but this is being opposed by the Waterloo Community Development Group. The Group points out that Hatch Row has been earmarked by the GLC for family housing, for which it is ideal, and it would be better to put the hostel on another GLC owned site like the one in Coin Street.

A public meeting to discuss these plans has been arranged by the Waterloo Community Development Group for Tuesday May 11th at 7.30 pm at the Waterloo Action Centre, Baylis Road, SE1. You will then be able to see the

plans and hear an explanation of what they mean and how they may, or may not, provide something that we want. The comments will then be sent to Lambeth and the GLC in the hope that they will change their plans accordingly.

This is the first time that major planning applications have come up in the Waterloo area since Lambeth Council and the GLC decided their policy for the area. How do these proposals fit into the Councils' planning strategy? See page 3 for more details of the plans and their implications.

Your Voice

Scouts: where job bobs go

Dear SE1,

We would like to take this opportunity to thank everyone who supported our recent Bob-A-Job week. And we would like to explain where the money goes to.

Firstly, we as an organisation have to pay in this district £1.40 capitation for each boy invested, this is for insurance, help towards training and camp-site maintenance. We have to collect this money because, unlike some other youth organisations, we receive no financial help from State or Rates to help run the Scouts.

You may be interested to know that our group was started in 1937 and has run for the benefit of the boys of this area ever since. We are an open group which means that any boy regardless of class, colour or creed is welcome to join. We aim to give the boys

some enjoyment each week plus sports and outings through out the year. For example, this summer eight boys from North Lambeth (three being from our group) are going to America to join with other South London Scouts to camp and live with American Scouts in their bicentenary year and they will be away for three weeks.

These boys have had to work hard (with a little help from their groups) to raise their fare money, so you can see every little bit helps.

We meet at the Cornwall Club, Cornwall Road two nights a week: Wednesdays 6.30 - 8pm Cubs Fridays 7.00 - 9pm Scouts.

Yours
D.C. Phillips
Group Scout Leader, 72nd North & Central Lambeth (Waterloo) Scout Group,
39 Cornwall Road, SE1.

Dump: Skip and hope

Dear SE1,

It seems to go on for ever, BUT..... At last! We reported a skip left on the ground by the Council.

Cheers for our youth, they have buckled to and filled it up, also made ready a bonfire to help clear.

Now, what about further help from Southwark Council? Surely with such enthusiasm from the younger generation we can expect some co-operation.

It was fun, one of the tenants in Pakeman House was pleased to serve a large pot of tea and hot sausage rolls.

Good on you and thank you for your help.

Yours
Alice Goodwin
21 Pakeman House, Pockock St.

PS. I just phoned the Council. Surprised to hear about skip. Will keep on until its cleared.

Posh house or popular cafe

Dear SE1,

A statement to me has created profound frustration to three useful establishments whereby the GLC has ordained these premises to close down ere long.

The Popular Cafe in Tooley Street provides good food to many working class people. I sent a petition list of over 200 names to Bob Mellish to retain this shop - also Diesel Engineering Co and Mecca Bookmakers.

Bob wrote stating he would do his utmost to save these businesses.

Can it be that the GLC are more interested in knocking down these shops for the purpose

of a rich man to have a large posh house erected thereon? If that is so then the living that humble people have attained by hard work is evilly taken from them for the greed of one person.

I have written to Sir Reg Goodwin and John Gilkin MP to stop this wicked intention that is now a great worry to the shop tenants.

We have in Dockhead a large piece of waste-ground which I call the "New London Jungle" - quite an ideal site for a "posh house" if the GLC desire to gain profit.

Sincerely yours
Ron Histed
15 Tower Bridge Buildings,
Dockhead, SE1.

While I would like to comply with your demand for the GLC to employ "enough staff to enable them to undertake their maintenance responsibilities properly", I would point out to you that we are being stringently controlled in the number of staff we employ by Government policy at the moment. Nevertheless, the GLC is spending some £20 million in the current financial year on improving GLC estates, but even this huge sum cannot ensure the maintenance standards we would hope for on every estate.

I do, however, think the GLC deserves credit for at least taking privately owned buildings such as Lake, Ley and Lefroy Houses, into public ownership so that tenants are given security of tenure and the chance to voice their opinions to a publicly accountable landlord.

We have never promised that municipalisation will immediately bring immense benefits to tenants in the form of better management and maintenance. All we have promised is that we will try our best to improve conditions.

Yours Truly
Reg Goodwin
The County Hall, SE1 7PB
(leader of the GLC)

WRITE

to SE1. We want to hear your news and views. It's good to know that GLC councillors are reading SE1 (& care enough to write in) - but we feel they have other places to air their views, while SE1 is for those of us who don't. So put your thoughts onto paper and send them to 12 Meymott Street, SE1

... or, since we've got a telephone at last, call us on

928 1643

GLC caretakers

Dear SE1,

While reading your news paper I came across an article concerning the problems of tenants in Lake, Lefroy and Ley Houses since these properties were acquired under the GLC municipalisation scheme in April 1975 (SE1 March 76).

Contrary to your article, I did in fact reply to Mr Rudnick, (copy of letter dated 17th Feb enclosed). You will see from my letter that the caretaking problems on this estate were exacerbated by incidents occurring in September 1975 when, due to verbal abuse which our cleaning staff received, they made it clear that they were not prepared to carry on fulfilling the extra cleaning duties which we had asked them to do at these properties. As a result, the Tenants Association and Mr Rudnick did, in fact, suggest themselves that they should look after some of the caretaking problems which you refer to in your article and we agreed with this.

You've never had it so bad

Dear SE1,

"You've never had it so bad"

The section on education in your April issue's centre page article, under the above heading, requires some correction and clarification.

First, the figure quoted for public expenditure on education in 1978-9 is in fact the one for 1979-80. The White Paper figures include libraries, science and arts as well as education and combine capital and current expenditure.

On the ILEA's services, standards cannot improve substantially with a no-growth budget, but nor will they decline. Overall standards in our schools will be maintained. Improvements in parts of the service, such as nursery education, the careers service, and adult literacy provision are planned, using resources from sectors in which savings are being made, including the Educational Television Service, administrative staff, and increased further, higher and adult education fees.

The figures you published for expenditure on new school building are misleading. We estimate that only about £24 million of the £28 million included in the 1975-6 capital estimates will actually be spent. So the £24.5 million provided in 1976-7, even allowing for inflation, can hardly be described as "a drastic cut".

You do not make it clear that the figures for nursery

school building are national figures. The £1 a week for school meals, mentioned in the same paragraph, is the total cost from September, not the extra cost, and this, too, is Government policy.

On teacher recruitment, I am sure your readers will understand that recruitment of primary teachers, for example, must be affected by the large reduction in resignations from the service and the rapidly falling rolls in primary schools. I must emphasise, however, that the ILEA is maintaining its overall staff-pupil ratios, even at a time of economic crisis. Our proportion of teachers to pupils is among the best in the country.

Yours faithfully,

Ewan G. Carr,
Chairman, Finance Subcommittee, Inner London Education Authority.

Gypsies

Remember the uproar, bigoted remarks and disgraceful scenes in Southwark Council last year about the gypsies?

Well, now they have been at the temporary Elephant site for a little while, local residents and shop-keepers have been pleasantly surprised at how they fit in.

One previously apprehensive shop-keeper in Brook Drive said "they are model citizens".

The moral - ignore scare-mongering howls from those who should know better.

YOUR LOCAL BAKER

Three "Q's"
Patisserie

62 ROUPELL STREET, SE1

PARTIES
CATERED FOR,
WILL DELIVER
ORDERS OVER £2.
Tel. 928 1557.

Tenants' halls: Council excuses exposed

Throughout Southwark there are tenants associations pressing for tenants and community halls, but recently Southwark Council have told tenants that "because of Central Government directives" there is to be no money for such facilities.

Millpond Tenants Association in Bermondsey has been told that for this reason they are unlikely to get a new tenants hall when redevelopment of the derelict wharves takes place.

At the same time, Southwark Council have negotiated a tenants hall as a planning gain from an office development proposed for Borough Road.

The hall is to be incorporated in Southwark's new Scovell Road housing estate. Thus, the deal is that the Scovell tenants won't get their hall without the office development going through next door. The question asked by local tenants is, why not build the hall as part of the estate without doing a deal with a developer - as was always the original plan for Scovell Road.

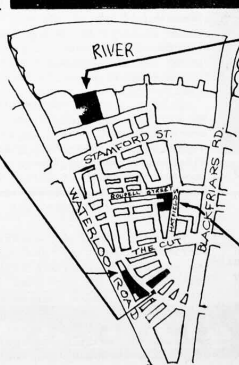
SE1 has discovered that money for tenants halls can still be obtained from the Department of the Environment. According to officials of the Department, money can still be sought under Section 93 of the 1957 Housing Act and in some cases under Section 105 of the 1974 Housing Act. Thus it is not a Government directive which is affecting tenants halls but a Southwark Council policy. Southwark seem at times even more anxious to implement cut-backs than the Government.



Waterloo: Shot Tower Wharf Taken for a ride?

Offices for Reuter's News Agency are planned as well as a restaurant overlooking the river, a pub, and a few small shops. The GLC have already given their approval to the idea and are now asking Lambeth Council for their comments.

The "planning gain" in this development consists of a riverside walk, a small public open space, and 22 flats for Lambeth Council use. The open space is very unusual: most of it is on the roof of the 2nd, 3rd and 4th floors and made of Astro-turf - the artificial grass used in indoor sports halls.



David Greig's

LeakCliff Properties Ltd have put forward a cunning proposal for the redevelopment of David Greig's building on Waterloo Road and the factory/warehouse on Gray Street at the back. They are offering the entire Gray Street site (worth over £1 million) to Lambeth Council for housing if they can turn the main David Greig building into offices. Lambeth Council have laid down three conditions for the building: the ground floor must be used as a food supermarket, there must be some land for housing, and the front of the building must be preserved.

The developer's plans do include a supermarket, but it is obviously inconvenient for them in their "prestige office" plan and there are doubts about whether anyone would be prepared to take it on in such circumstances. Local residents are desperate for more shops - if Lambeth Council took over control of the supermarket area there would be more chance of finding a tenant.

The housing in Gray Street will probably be built by the Church Commissioners and include family housing, sheltered housing for old people, and 1 bedroom housing.

The government have already given an "office development permit" and because of the housing, Lambeth Council are also said to be supporting the plan.

Hatch Row

Without any warning a promise to local residents has been thrown out by the GLC.

Hatch Row (off Hatfields) had been identified by the GLC as 'one of the prime sites for family housing' when discussing the future of the South Bank area with local groups last year.

This was strongly supported by these groups, such as the Waterloo Community Development Group. "The population has been reduced too far. The area needs an increase in stable family residents," they say.

no consultation

Now, suddenly and out of the blue, without even the slightest pretence at consultation - and by all accounts precious little discussion even within County Hall itself - the self-proclaimed guardian angel of co-operative housing, Richard Balfe, has offered the site to the Society for Co-operative Dwellings, who specialise in housing the 'young and mobile' (mostly students).

The WDC have reacted with consternation and no little anger. Margaret Mellor, their secretary, wrote to Lillas Gillies, Chairwoman of the South Area Board.

"If a student hostel is an irreversible decision for the Waterloo area it would be much better to have it at Doon St."

'more families' call

"This area already has too high a proportion of hostel accommodation, both for single people and for old people." Hence the need for an increase in stable family residents.

"There are very strong objections from most people in the immediate area to the idea of having a student community placed so near to an existing community of families and old people."

"Students are transients and can never be expected to be as committed to, and as responsible to, an area and its inhabitants as permanent residents would be."

"This is the cause of very real anxiety about noise and other irresponsible behaviour. We have longer-term anxiety about continuity and stability within the schools and the whole community."

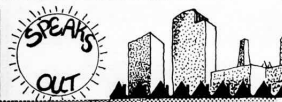
They strongly reject one argument the GLC have advanced.

"Hatch Row is not too small for the GLC to develop itself, as the new housing at Nicholson St certainly shows."

As for Mr Balfe, "we greatly resent the apparent fact that he did not take the trouble to inform himself of the lengthy process of consultation that has taken place here, or that he chose to ignore it."

There will be a public meeting on this and the other two sites at the Waterloo Action Centre on 11th May.

SE1



WE ARE both pleased and proud to see that S.E.1 is being read by persons in the hot seat (see letters column). It is not only the G.L.C. who manage to purchase copies, but both Southwark and Lambeth Council also receive them through local ward councillors. By no means are we trying to put a feather in our cap, but we are trying to encourage you all to use S.E.1 as a medium to get your voice heard. It is no good just grumbling to each other in the streets, make your views more public and maybe get things changed.

Although we are very glad for the residents of Peasman Street (see page 1) because it was a long battle against seemingly hopeless odds, we are very concerned for a few of the residents who have lived there a long time and who were in the minority according to the survey that was conducted.

They were not happy about staying in the street and they have already shown their feelings and have tried to get out of their accommodation. One of these is in fact an owner-occupier. She is not concerned about any financial gain from her property, she just wants to get rehoused with the local council. Peasman Street Residents Association have been trying hard to get them all rehoused with no success. We would like these few people being offered something now.

Up to the Lions!

Following my TREASURE IN THE THAMES articles I feel that I should also write about some of the changes I have seen over the past ten years. You probably all know that the GLC have been cleaning the Thames by some special process for quite a number of years. I am sure that this is working, for now fish are definitely coming back upstream. In fact one day two years ago, the day after a very bad storm I walked along the foreshore from Westminster Bridge to Southwark Bridge and there were over 300 fish washed up on the banks. Most of them were flounders, but there were some trout and some eels. How they died is something I cannot answer but they were fresh, so the storm may have had something to do with it.

I am not a fisherman myself but I did manage to catch a live 4ft. eel which had got stranded in a pool and I may add that it was delicious.

Certainly I have noticed a change in the movement of the mud; whether this is because the Pool of London and all its shipping and barges has moved out of Central London, or whether it is because of the GLC's clean-up campaign I do not know. You may not notice the difference when you look into the murky water, but if you go down onto the fore-shore when the tide is low in the afternoon you can virtually read the bottom, everything on the surface of the mud stands out so clearly, every stone and nail and all sorts of other objects.



There is a saying in County Hall that when 'the lion starts to drink, BEWARE!' This is one of the lions, all along the river wall.

In front of the Festival Hall where there used to be a muddy slime there is now sand. The fore-shore seems to be receding, for now there are stones projecting, some as much as nine inches, which were definitely not projecting 2 years ago.

Call this democracy?

Vauxhall Labour Party are experiencing something less than brotherly love and a true spirit of fraternal co-operation as they move towards selection of a new parliamentary candidate.

George Strauss has indicated that he will not be standing again at the next election. So a new candidate must be found, and for a plum seat like Lambeth Vauxhall this arouses a certain amount of interest, not to say competition.

Sadly, this has caused the previously relatively harmonious atmosphere to deteriorate, and if the last two meetings of the committee that will actually select the candidate are anything to go by, the rift will take some time to heal.

The curious machinations that are now coming to light have proved that what is commonly called the 'right wing' are every bit as good at fixing

things in their interest as the widely publicised activities of the 'left' have been in Newham or Hammersmith.

According to current reports, one of the leading contenders for the seat turns out to be no less than a Director of a prestigious merchant bank in the city, Baring Brothers.

This is rather an unusual background for a Labour candidate, to put it mildly. Barings have even donated substantial sums to the Tories since this Director has been there.

Curiously still is the other fact to emerge recently, that he actually lives in an altogether more congenial part of London, in Kensington. His eligibility to be on the crucial Vauxhall committees rests on his having a second home in this area. By some curious loop-hole you don't actually have to carry things to such lengths as to actually live in Vauxhall.

I am very disturbed about the reclamation of the fore-shore. We have seen a lot reclaimed over a very long period of time. All the embankment on the north side, which was once the river, has been reclaimed; and we are now seeing the same thing happen along the South Bank.

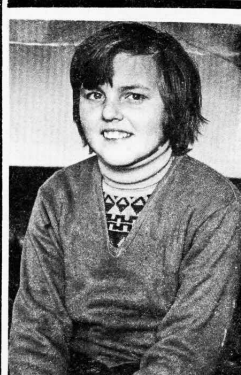
In the last issue you saw a photo of the reclamation at Bankside - this was going out to a length of 30ft.

I hope the planners know what they are doing. I also hope they replace the stairs leading down to the foreshore because there is no point having a clean-up campaign unless you can then get down to the foreshore to enjoy it.

I myself have managed to draw attention to the Old Barge stairs at Kings Reach and I am glad to see that the GLC in their recent decision on the future of the South Bank agreed to maintain them.

We see the spring tides getting higher and higher each year. It is around spring that the highest tides occur and the Thames reaches the depth of 26ft. If there were to be a strong easterly wind it would get even higher.

The authorities are clearly worried because they have raised the existing walk by 2ft with stone blocks. In fact some of the riverside walks have been raised so high that you can hardly see over the wall. For example, the wall in front of St. Thomas' Hospital and the wall at Bankside, MUCLARK



SE1 could reach many more readers if we had more willing distributors like Mick Rider of Windmill House (above).

We know the paper is liked from the warm welcome we get when we call, and we know who wants it regularly.

But it takes time to take it round and if we could find more helpers to hand it round their block, we could use the time saved to find other new readers on estates that suffer the terrible fate of - so far - never having heard of SE1!

Wouldn't you like to help? We welcome volunteers of all ages and sexes. Tell us when we next call, or phone us on 928 1643

SE1 wonders how many other houses scattered round in other useful locations this character has.

Unfortunately, his zeal to enlist more people on the right committees may have backfired. (Don't be silly, of course he denies that they are expected to vote for him. Well, he would, wouldn't he?)

It appears that he issued (and paid for) a Union card to someone, offering them at the same time a place on the key committee - which you are supposed to be elected to, not given.

Other people have suddenly appeared on this committee from the same Union (the GMMU) without even the inconvenience of attending a Branch meeting, and some after being members for only a matter of days.

Whether this is actually against the rules rather than merely of dubious morals is something the Executive Committee of the Vauxhall Party (elected by and from the Management Committee) is now to decide.

And who else should be in a position of some strength on this Committee? Why, none other than the character in question, perhaps your next M.P., Mr C.C. P. Williams of 47 Thurlow Square.

SE1

next issue out on May 28th. Send or phone articles by May 20 at the latest please.

meetings

Thursday May 13th at 7.30pm and Thursday May 20th at 7.30pm. EVERYONE IS WELCOME

Waterloo Festival

The date for this year's Festival is the 4th of July, and we are hoping to put on a festival as good as we had last year. In the past year we have had some ideas from the people who were at last year's Festival about what was a success and what was a flop. So with the good from last year and some new side shows this year, it should be good.

But all this will take a lot of effort from the Festival Committee, which is a small committee. So we are calling on all tenants associations, schools, and any other organisation that has any thing or idea they wish to put on, or anyone wishing to help in the running of the Festival or to help on the day.

Golden Oldy



Emma

Emma Warburton is a very active lady for her 75 years. She's lived in SE1 most of her life and now has a cosy flat in the Peabody Blackfriars Road estate. She was born on the very same day as the Queen Mother, in 1900, but since then her life has taken a very different turn.

"When I was very young I lived in Ethel Street, but we soon moved to Lambeth Walk. My mother had thirteen children, I was the last one. It was very hard up days."

"My father worked at W.C. & J. Fields at Westminster Bridge Road, a soap and candle works. It used to be behind the Canterbury, a music hall turned into pictures!"

"We used to have to run his dinner up and when it was night work run his supper up too. I was about 12, used to take his supper up about 9 o'clock at night when you could walk about the place and no fear."

"There were many more people around then. Shops and pubs were open till 12 midnight down the Cut."

"When I got married I came back again and lived in Wootton Court - there used to be a small court down the back of Wootton St, all little houses."

"I lived in the second house, it had one room downstairs and a little wash house out the back of your copper in it and a gas stove behind the door. The stairs were in front of the street door with one room upstairs."

"The rats were as big as me! They done a good job when they knocked them down in 1934."

"I was 21 when I got married, at St Pauls in Westminster Bridge Rd - that's down now too."

"In 1922 the Labour Exchange said, as you're a jam finisher would you like to go and work in Slough? So of course wanting the money I said yes. Money was very scarce then, my husband only earned £2 a week."

"Our fares then was about 12/- a week, I earned about £3 a week. We used to work from half past eight in the morning to half past eight at night - that was your regular time. I used to leave home at about 6.45 and get back past ten in the evening."



The troupe in action! From left to right, Mrs Rose Voice, Mrs Emma Warburton and Mrs Pauline Audley singing 'I live in Trafalgar Square'.

"My husband used to be waiting at the lift at Waterloo Underground and we would go over the back end of York Road and have a drink."

"What was a jam finisher? You get the jars of jam, you have to wash them, then label them, then you have to put a bit of paper in the top and a parchment top on top and then tie it up and cut round. Then you had to roll it right up in paper and box it up - and for that you got 2/3 for a gross of 21b jars and 2/2 for 11b's."

General Strike

"In the General Strike I was 26 and my kid was getting big, I was working at North Acton. The first day of the strike they said to meet at the Elephant. I think there was about half a dozen of us got a taxi to North Acton. We worked in jam, that was an essential because it was food so we were allowed to work."

"The strikers wouldn't touch food vans but they would others like the bus they burnt out at the Elephant. Our Governor let us have a lorry and he brought us home as far as the Houses of Parliament but they wouldn't come no further than that, they wouldn't bring us to the Elephant cos it was too rough!"

"I went to America - Cleveland Ohio - to see my daughter in 1959. I packed up everything with the intention of stopping there. I got a job as a cook/housekeeper. I was there five years but I came back because I wanted to see my boys. I've got two sons."

"Nowadays I belong to a troupe - old people. We go out entertaining all over. Our pianist got our troupe together and I've been with her 8 or 9 years."

"I do all kinds of acts, Tom Jones, a fairy (you should see my costume!), a Spaniard, a loose woman! I'm one of the youngest - there's one 86, one 83, one 81 and two coming up on 80."

"Our biggest problem's transport. We're looking for help to get to places. If you want to find out more, call Mrs Page on 735 3947."

Support Your Local Shop

- * fresh milk daily
- * newspapers
- * frozen foods
- * confectioners & tobacconists
- * all groceries & provisions
- * hot snacks, rolls and sandwiches to take away

Green Shield Stamps on all items. Double Stamps Saturdays.

THOS. E. DAVIES & CO (TOMS) 137 Southwark Bridge Road, SE1

OPEN UNTIL 8pm MONDAY-FRIDAY,
7pm SATURDAY,
1pm SUNDAY.

COMMUNITY PLANNING CENTRE

108 Great Guildford St
(Opposite Evelina Hospital)

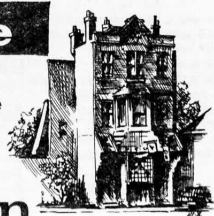
PLANNING & REDEVELOPMENT - SURVEYS - INFORMATION ON LOCAL PLANS

All Residents and Workers Welcome

Run by the North Southwark Community Development Group.
Open 10-6 Monday to Friday Tel: 928 8165

From Mike, Josie
and Staff

Rose &
Crown



Columbo St SE1. Tel: 01-928 4205

HEALTH WATCH

St Thomas' Community Health Council

IF YOU HAVE A COMPLAINT ABOUT THE HEALTH SERVICE, CONTACT YOUR LOCAL MEMBER.

Bernie Spain
48 Roupell St. SE1.
phone- 928-5852

What Where When?

LAMBETH ENTERTAINMENTS

Free swimming lessons at Clapham Swimming Pool, Clapham Manor St.
Every Tuesday Wednesday & Thursday 7.30 - 8.30 for children
8.30 - 9.30 for adults
Advance booking essential: 622 2786

WHITSUN WEEKEND in Kennington Park

Saturday May 29 2.00pm Donkey Derby
Monday May 31 2.00pm Play Leadership Annual Sportsday } Free

DURNING LIBRARY May 1st - 29th - Free (Kennington Cross)

The 200 Year Dream - an exhibition in celebration of the American Bicentennial.

LAMBETH BATHS - Massage in bubbling water

20 minute massage 60p admission or 15p for O.A.P.'s
Men's sessions: Monday, Wednesday & Friday 9.00am - 7.00pm
Saturday 8.30am - 12.00 noon
Women's : Tuesday & Thursday 9.00am - 6.00pm
Saturday 1.00pm - 5.30pm
Advance booking: Lambeth Baths 735 4301

MORLEY COLLEGE OPERA at the Emma Cons Hall, Morley College

13th, 14th, 19th & 20th May at 7.30pm
The Two Widows by Smetana. Conductor- Michael Moores
Producer- Andrew Downie & the Morley College Chamber Orchestra
Tickets: from 60p to £1.25 from Morley College 928 8501

SOUTHWARK MUSIC

8 May Lambeth Mission Southwark Singers
Lambeth Walk SE11 Conductor: Denis Coleman
7.30pm Mixed Popular Programme

9 May St. John's Church Southwark Singers
6.30pm Walworth, May Festival Conductor: Denis Coleman

13 May South London Art Gallery Southwark Concert Orch.
Peckham Road SE5 (Leader Peter Hall)
6.30pm Programme includes Music Christopher Hook - Trumpet
of London and Trumpet Conductor: Denis Coleman
FREE Concerto. (Exhibition: "This is Southwark")

17 May, Norwegian Church, Jamaica Road., Southwark Concert Orch.
Programme of Norwegian Music, starting at 8.00pm.

*** **

JUMBLE SALE for Tooley Street
Tenants Association on Saturday
May 22nd at 2.30pm in the Church
Hall, Fair Street, SE1 (off
Tooley Street). Come and buy!

Cricket at the Oval

Free Admission for
Elderly Lambeth People

Please send me a free 1976 pass for
Cricket at Kennington Oval.

I am a resident of Lambeth and
my pension book number is:

NAME (block caps please)

ADDRESS

SIGNED

DATE

Post this to:

Lambeth Amenity Services.
Sports Bookings/Box Office.
14 Knights Hill, SE27 0HY

or hand it in to any Lambeth library,
pool, social services office or centre
lunchclub club or the Town Hall
Information Desk.

Phone 761 0921 for more details.

All entries in this section are
FREE. If you have something to
publicise, just send us the
details, not later than one
week before publication day.
12 Meymott St, SE1. 928 1643.

The end of variety shows but not of sports events

With the disco, the end of
the variety shows from Lambeth
Amenities came to a close. But
the big success was the sport-
ing events. So with this suc-
cess they have extended the
events. So to all you sports
lovers, please support the
events, and we may get them on
a long term basis, for this is
one of the many things that the
Waterloo area is lacking, a
good sports programme.

Here is the new programme:

Bowls Senior Citizen

at Clapham Common, 11.30-12.30
Tuesdays, June 15th, 22nd, 29th,
July 6th

Putting Senior Citizen

at Clapham Common, Fridays,
June 18th, 25th, July 2nd, 9th

Gymnastics

at Hawkstone Hall, Kennington Rd
ages time

6 to 10 4.15 to 5.0 pm
11 to 16 5.0 to 6.0 pm
over 16 6.0 to 6.45 pm

on May 4th, 11th, 18th

Judo

at Hawkstone Hall, Kennington Rd
ages time

10 to 14 7.0 to 8.0 pm
over 15 8.0 to 9.0 pm

Anyone for tennis...?

There is a large new sports
hall in the South Bank Polytech-
nic building on London Road.
It is unused at weekends and
underused during college vaca-
tions when most students are
away. Why is this when this
area is so short of recreational
facilities?

Alison Clayburn, Community
Action Officer of South Bank
Poly Student Union, said "I
would like local kids to be
able to use the gym when the
students aren't around. The
Poly directorate have said that
porters must be on duty and
adequate supervision provided
and that this rules out weekends
when the building isn't open
anyway. But I still hope the
facility can be provided for
summer playschemes. It all
depends on proving the demand
from local groups, so I would
like to hear from anyone who
wants to use it."

Shakespeare 76

"Anthony and Cleopatra" on
Monday to Wednesday May 10 - 12,
"Henry V" on Thursday to
Saturday May 13 - 15.
Matinees 2.30pm, evenings 7.30pm
Tickets bookable in advance
35p 20p 25p 20p, concessions to
school parties.

Presented by the On Stage
(Southwark) Theatre Company.

Thursday 20th May, 7.30pm.
Southwark Council for Voluntary
Service: Housing And Planning
Meeting, Havel Street Hall,
Havel Street, SE5. Further info
from 703 9730 or 701 3816.

Anniversary

An exhibition to commemorate
the 50th anniversary of the Gen-
eral Strike is to be held in
Covent Garden in July.

There is an urgent need for
relevant material to be loaned
for the exhibition. Should any
of your readers have photo-
graphs, leaflets, local news-
papers, strike bulletins, per-
mits or other material related
to the Strike we would be grate-
ful if they would write giving
details.

We are also interested in
hearing from people who have
personal memories of the Strike
so that their stories may be
used in the exhibition.

John Gorman
Exhibition Organiser
Provisional Ctee to Commem-
orate the Fiftieth Anniver-
sary of the 1926 General
Strike, Sutton House,
Homerton High Street, E9

Equality of Sacrifice?



50th Anniversary Commemoration
of the GENERAL STRIKE 1926
A Public Meeting organised by
Southwark Trades Council on
Friday 7th May at 7.30 pm at
Rachel McMillan Teachers Centre,
63 New Kent Road, SE1.

Speakers:
Alan Fisher, general sec, NUPE
Angela Tucket, Trade Union
Historian
Stan Hutchins, Assistant Sec
of Southwark Council of
Action 1926.
And a Theatre Group.

Wednesday, May 5th.....
Lunch. 1.30.....Northcoote House
Royal Street, SE1.....12 - 1.30
Everybody welcome.....
for a chat.....who knows who'll be
here.....every first Wednesday
in the month.....same time

Enjoy yourself!

AT ON Thursday
The Northcoote
Market 13th May
2.30pm.

Band: Sideshow: Refreshments:
Stalls (nearly new clothes; food;
kitchen goods; plants & flowers);
etc, etc, etc, etc, etc, etc,
4pm: COME JUMP FOR KIDS
Northcoote House, Royal St, SE1.

YOUR RIGHTS

YOUR RIGHTS This month shows
how hard it can be for an
individual to maintain his citi-
zen's rights when arrested by
the police. The police in prac-
tice do have almost complete
control over what goes on inside
a police station: no-one outside
can see what's going on inside.
You do have rights to contact a
solicitor, for example. But what
can you do if a police officer
won't let you make a phone call.

Of course you can complain
about the way you have been
treated by the police. But just
complaining may not get you jus-
tice: it's the police themselves
who investigate complaints
against their fellow police!
What we need is an independent
body for making complaints about
the police.

There has been more concern
lately about the power of the
police. This month a local resi-
dent writes about what happened
to him when he was taken to a
police station in Lambeth.

Police policed?

AFTER ATTENDING A Parent
Teachers Association cheese and
wine party, I offered to drive a
few friends home. I was station-
ary at the traffic lights for
quite a few minutes and as I
moved off an unmarked police car
drew alongside and the passen-
ger officer signalled me to stop.
I did so, and this same officer
told me I had been speeding and
that he required me to take a
breath test. I took the breath
test and was told it was posi-
tive. I was then taken to the
police station where I emptied
the contents of my pockets:
money, cigarettes, lighter etc.
I was then taken into the Sur-
geon's room.

My true but unbelievable
nightmare was just beginning.
I was told to take off my jacket,
which I did, when suddenly the
door burst open and in marched a
few police officers. I was pushed
onto a couch where 3 officers
held me down and a 4th officer
poured a thick white liquid taste-
ing strongly of oilised down my
throat. I was given a second
breath test which again I was
told was positive. Around this
time I had to sit and watch a
person kicked all around the room
just because of asking to make a
phone call.

The doctor arrived and took a
blood sample. I was afraid to
tell him about the assault as I
believed him to be a police doc-
tor. I was given a third breath
test and told it was getting
worse. My personal belongings
were handed back to me, with £3
missing and no cigarettes in the
packet. I reached home feeling
exhausted and went to bed.

complaint

On Saturday at lunchtime,
less than 12 hours after this
incident, I contacted our commu-
nity police constable and told
him the whole story. He advised
me to do nothing until he came
to see me on Monday evening. He
came as promised and he strongly
advised me to write to Scotland
Yard A10 Branch. After this the
police constable left my home.
I went to produce my licence
etc. at the police station. How-
ever, during a conversation with
the desk sergeant the white liq-
uid was mentioned and I was
asked to make a complaint to
the chief inspector. I sat and
told the chief inspector the
whole story and he did not take
one note of what I said. He
asked me if I would see the doc-
tor, and I agreed.

Social Services area 2 saga continues

After months of protest from
tenants associations in Bermond-
sey over the run-down in the
staffing of Area 2 Social Ser-
vices in Tooley Street, repre-
sentatives of the associations
were given a progress report on
April 6th at the Tooley Street
office following earlier meet-
ings when promises of action
were made by Southwark Council.
The meeting, chaired by Jim
Patrick of Tooley Street T.A.,
was attended by representatives
from Arnold T.A., Dickens T.A.,
Four Squares T.A., Millpond T.A.,
Tooley Street T.A. and the
North Southwark Community De-
velopment Group. In attendance
from the Council were the Di-
rector of Social Services, Mr.
Sellick, and his assistant,
the new Area Team Leader Mr.
Murray Marks, as well as the
Chairman of the Social Services
Committee, Councillor Coveney,
and also local Councillor, Ann
Stevens.

First being fought by the ten-
ants associations, the question
of employing local people to
visit the elderly had been raised
("SE1", March) and Councillor
Coveney announced that this
suggestion had been taken up and
was being discussed with the
staff side. He said that the
scheme was likely to get the go
ahead, and since then "SE1" has
heard that applications for
these jobs are being invited.
This is a clear indication of
the impact that tenants can make.

meetings

In addition to this, regular
meetings between the tenants
and Social Services workers are
to take place every two months to
liaise over problems as they
arise and also to ensure that
tenants associations are clear
what services are available and
that the Council is clear what
services the tenants think should
be available.

The first of these public
meetings is to be held on May
18th at 7.30 at the Tooley Street
office.

improvement
Mr. Sellick told the meeting
that the situation had improved
significantly, such that only
two full-time appointments and
one part-time post were now
vacant, the full complement being
18. Earlier this year, the team
had dwindled to 6 workers, at
which point the front door had
been closed and the office shut
to new cases or enquiries.
At an earlier meeting in
January when the closure was

The outcome of this story was
that my blood result was 92. I
pleaded not guilty and asked to
be tried by judge and jury. The
court case lasted 4 days. It took
the jury 5 hours to reach a 10 to
2 majority verdict of guilty. I
was banned from driving for 1
year, fined £50 and £300 costs.
A lot of money for being inno-
cent.

All I can do now is hope that
the investigation being carried
out by A10 will reveal the true
facts.

WILL YOU BE THEIR NEXT VICTIM?

- If so,
- 1) Go to the hospital or a doctor at once
 - 2) Make a complaint at a different police station to the highest possible officer on duty and ensure that he does take notes and that you sign a statement
 - 3) Contact A10, Complaints Dept, New Scotland Yard, The Broadway, SW1

Brighter Lambeth '76



Is your garden bright enough to win a prize?

Cash prizes and trophies for best gardens,
window boxes, streets and estates.

Calling all Lambeth residents: you are eligible to join
in our campaign to make Lambeth a brighter, better
place to live in.

Why not improve your neighbourhood and be in with
a chance to win one of ten prizes in our Brighter
Lambeth '76 Competition.

Winners in each of the three categories receive a
Trophy and a £20 voucher. Runners up receive vouchers
of £10 and £5 for the second and third places.
Judging will be in June and July and results are
announced in August.

All entries should be in by 28th May.
Further information from:-

Brighter Lambeth Bureau,
The Mansion House,
Brockwell Park, SE24

to whom the slip below should be returned.

I wish to enter a window box/balcony
garden; area for Brighter Lambeth '76.
I am not a professional horticulturist and
agree to accept the judges verdict as final.

Signed

On behalf of

(if applicable)

Address

LAMBETH Date

keep free the 4th july for
the waterloo
festival



Already too much consultation—

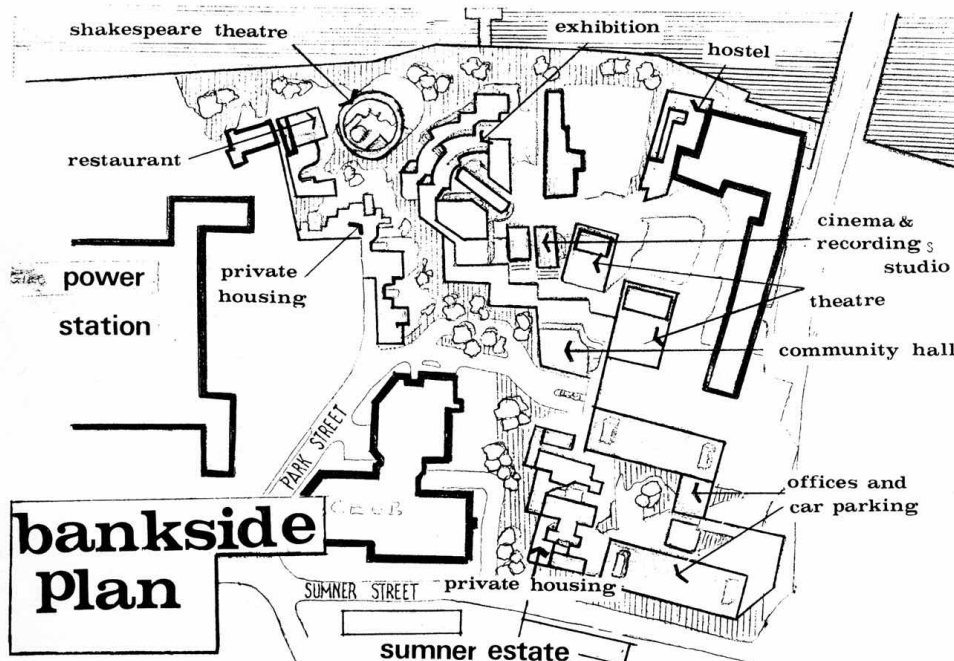
SAYS
COUNCIL
LEADER

Councillor
O'Grady's
Dream for
Bankside?

LOCAL GROUPS AND THE GLC SUFFERED A SCATHING ATTACK LAST MONTH BY SOUTHWARK COUNCIL LEADER, JOHN O'GRADY, who said that the idea of building new housing on Bankside was "a false trail" and "not within the realms of reason".

As far as he was concerned any scheme for east Bankside must contain at least 80,000 square feet of offices and a Shakespearian Theatre....these were "fixed points" he declared, intervening during a debate on Bankside redevelopment options at the April Planning and Development Committee meeting.

(continued below map)



Even though one Council officer described the Theatre as "the biggest burden on the scheme - a loss from the day it is built", the Committee agreed to investigate further a number of options each containing offices, private housing and a Shakespearian Theatre.

"over consulted"

When asked by Councillor Dalton whether there was to be any public consultation over these options, Councillor O'Grady said, "TO MY MIND THIS AREA HAS BEEN OVERCONSULTED".

These manoeuvres by the Planning Committee mark the first time that negotiations between Southwark Council and the developers for east Bankside have surfaced publicly

secret talks

even though they have been going on in secret for over four years.

One reason for this is that Southwark own $\frac{3}{4}$ acre of land (Greenmoor Depot) on Bankside which they want to include in the redevelopment of the Emerson Street/Bear Gardens area.

But another reason is that Southwark know that the G.L.C. will have serious objections to

their schemes. This, of course, is exactly the position since the Bankside area is strictly speaking the responsibility of the G.L.C., not Southwark. Also, the G.L.C. have published their own strategy plan for the area called "The Future of the South Bank". This plan puts the emphasis on housing rather than offices - hence the angry opening remarks of Councillor O'Grady at the Southwark Planning Committee.

rejected by GLC

In a report recently presented to the G.L.C. South Area Board Planning Committee, Southwark is criticised for not inviting the G.L.C. to the Working Party on Bankside. The GLC did not know of the options until July 1975.

The G.L.C. Report rejects all of the options put forward because of the huge amount of offices (between 174,000 and 270,000 square feet) and because they run "counter to the policy of maximising housing development on the South Bank". The Report also says in relation to the theatre and entertainment complex that "it is not considered that the substantial entertainment elements within

the various options are a planning benefit". Of the theatre, the Report says "no evidence is put forward to justify a need for this element". The South Area Board accepted the recommendations of the Report and instructed the G.L.C. officers to discuss with the developers "alternative forms of development for the land". Unlike Southwark Council, who have consistently chosen not to respond to local needs, the G.L.C. are now seeking further consultation with local people over alternatives.

See their points

HOW LONG do you have to wait to get a council flat? Nelson and Dorothy Hubbucks of Tooley Street have been waiting since 1943 to move out of their flat which has no bathroom and only an outside toilet. When they first applied they had two young children - now they have grown up, moved out and have children of their own but the Hubbucks are still in the same old flat. The only thing that has changed is that they have been transferred from the family housing list to the couples list.

Hospital future — still in doubt

Bernie Spain writes

The future of the Lambeth Hospital is still in question. The Area Health Authority at their meeting in February agreed in principle to the closure of the hospital and voted against the Community Health Council's proposal to keep a part of the site open for a Community Hospital, staffed by local G.P.s.

Some wards at the Lambeth are already being closed, of course, so that the patients can be transferred to the new building on the Albert Embankment. This has always been part of the district's development plans.

DISPUTE

The dispute between the District Management Team and the C.H.C. revolves around the remaining 300 beds which the DMT also want to remove to the main hospital site. The issue now goes to the Regional Health Authority for their decision, and the C.H.C. has just been informed that the Region will first hold a meeting in the district to discuss the matter further with the two opposing parties.

The C.H.C. will continue to press for a Community Hospital since there is considerable local support for the idea, both from the residents in the neighbourhood and from the G.P.s. and Health Visitors. The Region cannot actually close a hospital against the wishes of the Community Health Council and, in the case of a dispute, the matter must go before the Minister.

STILL A CHANCE

There is still some chance that the C.H.C.'s scheme may go through as the Minister, Dr David Owen, is known to be a strong supporter of the principle of Community Hospitals.

The C.H.C. has been successful however in its attempt to stop the Lambeth site from being developed as a campus for residential accommodation for St. Thomas' staff. The Area Health Authority agreed that if the Lambeth is closed no decision should be taken over the future use of the site without full talks with Lambeth Borough Council, the C.H.C. and "other interested parties". This means in effect that at least part of the land will be developed for community purposes, probably including sheltered housing for the elderly, which both the Council and the C.H.C. see as being a priority for this area.

BERNIE SPAIN IS ONE OF OUR LOCAL REPRESENTATIVES ON THE COMMUNITY HEALTH COUNCIL