

# SE1

APRIL '83 15p MONTHLY. NUMBER 14

"The tin is coming down."

That is the good news for Southwark residents, according to local resident and Southwark councillor, Chris McKie (see picture).

Thanks to the GLC's Community Areas Policy, work has already started on improving existing open spaces, or turning derelict sites into attractive and useful facilities for local people in the SE1 part of the borough.

Leathermarket Gardens is one site which has been talked about for years. With GLC money, the present small play area is to

be extended. There will be an adventure garden next to Snowfields School, and parts will be turned into a 'wilderness' (more natural area) and a meadow.

Work on the landscaping is already well in hand. Local people have been invited to express their views on the small community centre which is proposed. Outline plans have been drawn up in preparation for a start on building it in June. But a committee has been set up to make final suggestions on how the centre should be laid out.

Any local residents to Leathermarket Gardens (anybody who lives between Long Lane & Pooley St) can contact Cllr. Chris McKie on 232 0299 or at the Town Hall, Peckham Road. Apart from tenants groups using it, other suggestions are a kids club and a creche - Charterhouse is too far for many young families.

#### MORE FACELIFTS

Other work funded by GLC money is underway at Hatfields, Grotto Place and most noticeably at Little Dorrit Playground, near

the corner of Marshalsea Road and Borough High Street.

Southwark Council has sent out an invitation to community groups to send in suggestions of eyesores and unused pieces of land which could have a 'facelift'. Contact the Town

Hall if you haven't received a copy of their latest planning newsheet giving details of 'Operation Facelift'. And watch out as the tin comes down throughout the borough during the year. Here's to a brighter Southwark!

## THE TIN IS COMING DOWN



*inside!*

TENANTS TALK Page 3      NEW M.P. INTERVIEWS Page 7  
HISTORY OF THE OXO TOWER Page 4  
GARDENING AND FRANK Page 6      POETS CORNER Page 5  
LETTERS AND WHATS ON Page 2      SMALL ADS Page 7

## CRACKING UP!

Inside (page 5) there are a few of the many photographs we have taken in a small area of the Borough. Multiply this by the whole of Southwark, and you will get some idea of the state it is in.

Added to these hazards are many others. Rubbish is left

on pavements, where people who are blind can fall over. Hedges in front of houses are left overhanging the pavement, usually at eye level. In many cases, even front fences and walls are torn down. These are just a few of the many.

CONTINUED ON PAGE 5

*the local newspaper!*



# 2 letters

Dear SE1,  
Recently, I was fortunate enough to be part of the two-day Job Preparation Course run by the Waterloo Employment Project.

The course enabled me to discover aspects of 'job' preparation I had never even considered, from the basics of where to look for employment through to a thorough 'mock-up' interview.

My thanks to the training staff, Liz and Steph, the personnel people and my fellow trainees who enjoyed the benefits of this excellent short course.

Yours faithfully

Joe Fox

SE1 adds: If there is enough of a demand, further courses will be run. Contact Steph or Liz at WEP, Colombo St. Centre, SE1 phone 928 8024

## BIG BAND &

We are starting a new big band to rehearse under the conductorship of George Ward on Wednesday evenings (7-9.30 pm) at the County Education Building, King Edward Walk, London SE1, starting on June 15th.

The music will range from New Orleans, Jazz, through Swing, Big Band Jazz by famous arrangers like Glen Miller, Duke Ellington etc. to modern Big Band Jazz.

Any players of brass instruments, reeds, guitars, (acoustic or electric) drums and key boards are welcome. You don't have to be an expert player and there are no auditions.

If you are interested and are likely to be able to come and play, please give us a ring: Ron Probert on 582 7374 or Eithne Nightingale (ext 54) or Michael Cranbert (ext 48) at Morley College 928 8501

## WHAT'S ON

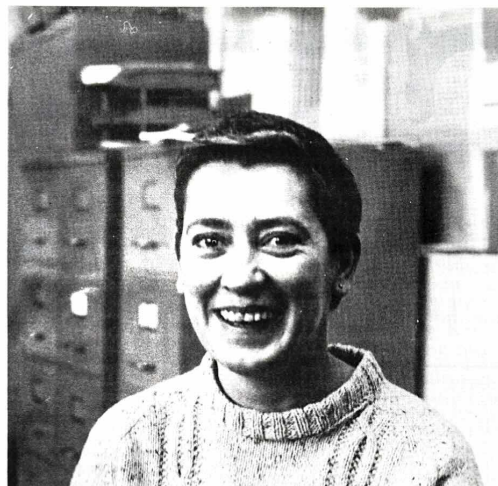
APRIL 25th. A tribute to Irving Berlin at Lambeth Town Hall, with a varied star cast. 1.30 to 3.30pm All seats 50p Box office 720 3530

APRIL 29th Waterloo Amenities show at Young Vic in the afternoon. Programme to be confirmed. More details from Waterloo Action Centre, 14 Baylis Road, SE1

MAY 9th An afternoon of variety at Lambeth Town Hall. Same details as for April 25th.

JUNE: Boat trip organised by Waterloo Amenities Group. More details from Charlie or Dolly at Waterloo Action Centre.

MAY 7th: Youth CND Peace Festival in Brockwell Park, with Paul Weller, Hazel O'Connor, Clint Eastwood & General Saint, The Damned, and more. Further details from Youth CND, 11 Goodwin St, N4, phone 263 0977.



## COMMUNITY LOSS

When Cynthia Domoney was offered the job as Community Liaison Officer with the National Theatre she was extremely nervous. After all she'd worked at the N.T. for six years and never before had the N.T. shown much interest in 'liaising' with the local community. How would local people react? Would they give her a chance to prove that she genuinely wanted to 'break down the barriers' that had been raised over the years?

Taking a deep breath and raising herself up to her full height (just over 5'!) she sallied forth. Her boss had told her to 'create ten new jobs for local unemployed youngsters within the N.T.' therefore her first call was to see Marshall Coleman of the Waterloo Employment Project. Cynthia says "The first time I went into the Action Centre I was terrified. The place was full of local people who had called in for help and advice and all the workers were tearing around answering questions, telephones, trying to sort out benefit etc. Marshall was extremely suspicious and kept asking why the National Theatre had suddenly decided to help local people. He wanted to know what the National was going to get out of it. After a long discussion he relaxed a little and told me to come back and talk to the new worker, who was soon to be appointed. It was obvious that he was still cynical, but at least it was a start!"

Her second visit was to see a member of the Waterloo Festival Committee to see if they would like the National to provide some street theatre. Again she encountered cynicism and suspicion as well as some amusement. They too wanted to know what the National would get out of it and why they had decided to involve themselves with a community they had virtually ignored for six years. Cynthia

explained and finally won the person over, but was told, "We don't want any of that Shakespeare stuff!" What they did get was Tom Stoppards 15 minute Hamlet which attracted a large crowd and delighted the audience. Since starting the work Cynthia's achievements have included organising an exhibition at the

N.T. which displayed carpets made by Elephant Jobs, arranging benefit performances to raise money for various groups, including the one which is to be held to raise money for Coin Street, liaising over jobs for local people in the N.T. and organising a scheme that would provide the community with summer, winter and Easter shows, that could well lead to workshops in drama for the community. In fact through her commitment and hard work, hundreds of local people have benefitted, both directly and indirectly. Perhaps that's why so many of us feel outraged and disgusted at the way she has recently been made redundant. It seems that after all her hard work, the National Theatre has thrown it's commitment to the community out the window and has started to rebuild the barriers it took Cynthia Domoney a year to start pulling down. Who knows if they'll ever come down again?

Since hearing the news many groups have decided to protest formally about Cynthia's redundancy and since I decided to write this article a large number of groups have asked me to mention how grateful they have been for all the help you gave. So Cynthia, on behalf of those groups, I thank you and wish you every success in the future. We haven't just lost a community liaison officer we've also lost a good friend!

Steph Blackwell

## PLANNING SHORTS

### LIGHTING

Lambeth Council has put some money to improve street lighting in the borough, including Waterloo. If you or your group know of streets which could do with being better lit let Lambeth know at the Town Hall or contact the Association of Waterloo Groups c/o Waterloo Action Centre, 14 Baylis Rd with your suggestion.

### PARIS GARDEN

Member groups of the Association of Waterloo Groups have been invited to put forward their views on how the old Melody Maker/IPC Social Club site should be used.

As we reported in our Xmas issue, opinion at a public meeting to discuss the site was quite evenly divided on whether it should be used for housing or sports facilities. As AWG needs a two-thirds majority in its decision making a clearer indication is being sought, so that views can be forwarded to Southwark Council who would have the final say on what happens on the site.

### ARCADE

Local groups and market traders lost their case against allowing an amusement arcade to the off-licence in Lower Marsh, at the public inquiry at the beginning of March. SE1 Inspectors report with full details is still awaited.

### COIN ST

There is nothing further about the Coin Street campaign in this issue of SE1. But Waterloo residents should have recently received a copy of the latest Coin St News (April 1983). If you haven't got a copy, get one from Waterloo Action Centre between 10am and 4pm weekdays.

The 4 sides give full up-to-date and background details.

### Ticket Office

At its last meeting, the Association of Waterloo Groups decided to oppose plans for a box office for the Old Vic on Emma Cons Gardens, opposite the theatre. It was felt that any loss of the limited open space in the area should be opposed, especially as they wanted to site the small building on the one bit of lawn in the Gardens.

# PENSIONERS UNITE!

On Tuesday March 1st, at Central Hall, Westminster, the Association of Southwark Pensioners Group was heard loud and clear in our attempts to state our claims of pensioners nationwide.

Around 500 pensioners listened to eminent speakers such as Jack Jones, Fred Baker, Miriam Cook, who work ceaselessly for pensioners, trying to improve standards of living. Many representatives of pensioners groups were able to put points of view to speakers and pensioners in the hall.

In the afternoon, groups of pensioners were met in the lobby of the House of Commons by their own MPs, and were able to put a pensioners' voice and point of view to them.

North Southwark Pensioners Group met the new MP for Bromley, Simon Hughes. He accepted the Declaration of Intent of Southwark Pensioners.

## PHOTO COURSE

As mentioned in the March edition of 'SE1', we will be organising a photography course for people who have a little experience of photography and are interested in finding out how it can be used in a community newspaper.

The course will be spread over three sessions, with the first two sessions taking place on Saturday mornings and the last one taking place on a weekday evening. The first session will be concerned with the fundamentals of actually taking a camera, how photos are developed and constructed; what makes a good photo, what to look for when taking a picture and manipulating a situation. In this session, we will be using slides, photos and newspapers as illustrations. We will also talk about ideas for illustrating the next issue of SE1, and how to approach them.

In session two we will go through the film processing procedure and print up photos for the next issue of SE1. The last session will coincide with our SE1 meeting and will primarily focus upon incorporating photos into the newspaper; balancing photo and text, strong photos as opposed to news photos and scheming the newspaper.

The dates of the course are: Saturday 14th May 10am - 1pm, then Saturday 21st 10am to 2pm, then Saturday at Blackfriars settlement, and the final session 6.30 to 9pm at the SE1 office, 12 Meymoat St, SE1. If you are interested in participating in this course,

These rights require an adequate State Pension, the abolition of standing charges, being entitled to an adequate death grant, and receive a regular tax free Christmas bonus of £20. And to be able to maintain a warm and well lit home with adequate heating allowance covering all fuels.

Simon Hughes also showed interest in pensioners groups, and has asked to come along to our meetings.

A pensioners day of action is to be held in September - more information nearer the date. There must be a big publicity campaign for this to make pensioners aware of their power and strength in numbers. Pensioners, we have a voice. Lets make it heard. Dont let it be a voice in the wilderness.

Anne Gough, Chairperson of North Southwark Pensioners Action Group (NORSPAG) c/o Borough Community Centre, 56 Southwark Bridge Rd, SE1

please contact Paul Ferman on 261 1404 or drop into Waterloo Action-Centre, 14 Baylis Rd, SE1. If not there, leave your name and address, and we will get back to you.

## TENANTS TALK

### AQUINAS ST.

'SE1' is pleased to be able to report that work will be going ahead on most of the remaining flats and 'cottages' in Aquinas St which are waiting to be rehabilitated.

After pressure from local groups through the Association of Waterloo Groups, and Bishops Ward Labour Party, the GLC has agreed to find the money. This is in spite of the fact that the GLC's overall capital spending on doing up housing and the like has been severely restricted by the government.

Bryn Davies, GLC councillor for the area, has told AWG that work is 'in hand' on flats, number 24,25,26, and the rest of the flats will be done during the 1983 to 1984 financial year. The 'cattages' still to be done will be in the 'enhanced' rehabilitation programme for the year - on the insistence of Terry Rich, local Lambeth Labour councillor. This only leaves number 16, the fourth cottage, untouched. It has been made totally uninhabitable by squatters in the last year, and will need a lot more work doing to it.

The Aquinas Street housing is among the properties handed over by the GLC to Lambeth Council, but which the GLC is still in charge of repairing.



Parking has been a problem for tenants of Canterbury and Stangate Houses for some time. These blocks, opposite St Thomas Hospital, and owned by the Special Trustees of the hospital are close to various offices which don't have much of their own parking space. This can mean that residents parking is taken up by outsiders.

The management committee of the RA has put forward a proposal for an electronically operated barrier to be installed at the Upper Marsh entrance to Canterbury House. Entry would be by a coded card, and the cost of installation (£1500 approx) would have to be met by the users.

A general meeting on March 23rd for all residents discussed this, as there was some concern about visiting sons and daughters etc getting access.

An active social committee has been set up. A weekly raffle is helping to subsidise the social events. So far, there have been two social evenings in the Northcote House Hall, both of which were very successful. Bingo evenings have also been started, and another social is planned for May 14th with music by the New Embassy Band.

### ST THOMAS

There is also the possibility of a coach outing in June. Residents are naturally very concerned about the proposed Channel Tunnel Terminal at Waterloo Station which could mean the railway being extended towards Canterbury House. The RA has also recently joined the Association of Waterloo Groups.

## ROOM FOR IMPROVEMENT?

At the last Kennington District Housing Committee a vote of no confidence in Lambeth's housing management was put forward by Tenants Associations and then withdrawn.

Tenants complained about the long wait in getting repairs done, the way in which repairs reported got lost and also said that breaches in confidentiality had taken place. Jackie Hall, the District Housing Manager, said that efforts were being made to improve the situation although everything was not straight yet.



# 4 WANTED, DEAD OR ALIVE?

MPs were told on March 24th that urgent action is needed to save residential communities and the economy of Central London.

In the last ten years the centre has lost 26% of its residents. As the population has been forced out, so schools, shops and other local facilities have closed. Residential areas have been plunged into a vicious circle of decline.

The office market is collapsing, vast numbers of sites with office permissions remain blighted, and the local economy is disintegrating.

Community groups from the central area are telling MPs that an urgent programme of action is needed. An 11 point plan has been put forward to the House of Commons' Environment Committee.

1. A severe restriction on office and hotel developments
2. The return of housing with 'temporary' office permission into residential use.
3. A change in the way land is valued combined with the possible introduction of double rating on all empty land and buildings.
4. More land and construction finance for new low-rent housing in Central London
5. A programme of improvements to existing housing.
6. A requirement for planning permission to convert low-rent housing into 'company flats', luxury housing, or any form of unprotected tenancy.

7. A re-definition of 'residential occupancy' to remove loopholes in existing Rent Acts.

8. A change in the way rateable values are calculated.

9. Increased public investment in employment initiatives outside the tourist and office sectors.

10. A programme of improvements to the environment, the facilities and the design of public places - whether residential estates, shopping centres or places where people spend their leisure time.

11. A reversal of the trend towards centralised, unresponsive government, and a commitment to real involvement of the public in the planning and development of the areas in which they live and work.

Contact The Campaign for Homes in Central London for more information on 240 2430.

## Community Grants

Southwark Council's Community Affairs Committee has agreed to make available £85,000 to groups and organisations that do not already receive financial assistance from this Committee in 1983/84. The money is to be used to fund new projects.

The Committee is especially looking to fund groups that are organised and run by local people that aim to tackle community problems or meet particular needs.

The sort of applications that the Committee will favour will include requests for the following:

- Grants towards the running costs of employing part-time (or possibly full-time) workers to help organise activities, run community centres, etc;
- Grants to help with the purchase of equipment that local groups need to carry out their activities;
- Grants to help pay for expert help and advice that groups might need;
- Grants to produce and make available community newspapers or other visual material.

The Committee will also make available £10,000 as small grants to assist groups with one-off activities or purchases or for groups that need only small amounts of money to help get off the ground. Normally no single grant will exceed £1000. The Committee intends to make another £10,000 available later in the year to attract similar applications.

If you think that you would like to make an application and need advice please contact the Council's Community Development Officers on 703-6311 Ext.2084/2260 as soon as possible. Advice can also be obtained from the Independent Council for Voluntary Service on 732-3731 and the Council for Community Relations on 274-8793.

Application forms for grants can be obtained from the Co-ordination Group, Town Hall, Peckham Road, SE5 or telephone 703-6311 Ext.2251.

The closing date for the return of completed applications is FRIDAY 6 MAY so do not delay. Act now by ringing any of the above numbers for guidance.

## SOUTH LONDON WOMENS' HOSPITAL

Regular readers of SE1 may well be aware of the plight of a few of the hospitals that serve this area.

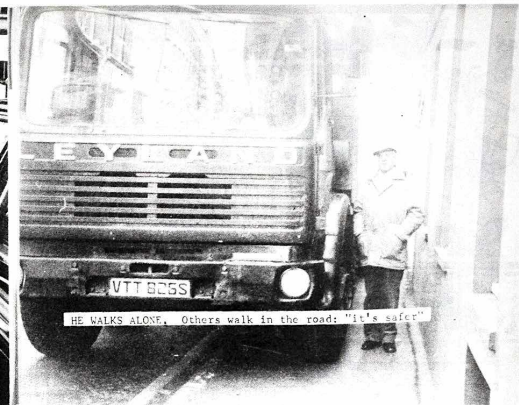
Even though the present Minister, Norman Fowler, goes out of his way to stress that the NHS is not having its funding cutback, you don't have to be an expert to see that wards, specialist services and even whole hospitals are under threat of closure.

One of the latest victims of this policy of cutbacks in the NHS is the South London Women's Hospital. This hospital serves a very important function in that it is the only hospital in South London where female patients are guaranteed care and treatment by female doctors and nurses.

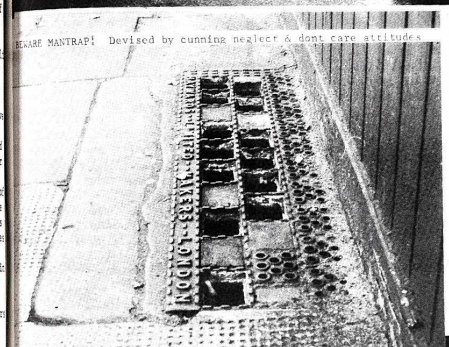
At present, the local District Health Authority is circulating consultation papers amongst a variety of interested groups and organisations. Responses are due back by 1st June. The DHA will then produce another paper which will take into account the views and opinions of the people who have replied. This will then be submitted to the regional



You too can have a place like this



HE WALKS ALONE. Others walk in the road: "It's safer"



BEWARE MANTRAP! Devised by cunning neglect & dont care attitudes



ANOTHER MASTERSTROKE: BEWARE OF FORGOTTEN

CRACKING UP! CONTINUED FROM FRONT PAGE



## Sick Pay

From 6th April if you are sick and off work, for the first eight weeks your employer will have to pay you a proportion of your normal pay. Only after that will you be able to claim sickness benefit.

What the employer pays you, Statutory Sick Pay, will be payable at three different weekly rates. The amount you receive will depend on your average weekly earnings before you became sick.

Average weekly earnings	Weekly rate of S.S.P.
£32.50 - £48.49	£27.20
£48.50 - £64.99	£33.75
£65 or more	£40.25

Remember that the figures above are the minimum that you are entitled to. Your trade union may have negotiated a better sick pay scheme than this low level of Statutory Sick Pay, which is subject to tax and national insurance deductions. If your trade union hasn't done this, make sure it does.

If you have any difficulty in getting your entitlement, contact your trade union rep or local advice centre.

## :POET'S CORNER:

### it's NO!

It's no to the unions and no to the Tories  
It doesn't matter who gets in  
All we'll get's tall stories

II  
It's no to the health workers and no to the nurses  
Don't come asking for more pay  
All you'll get is curses

III  
The Georgie boys went down the mines  
To try to feed their babies  
But the coal-mine owners locked them out  
and wouldn't pay their wages

IV  
It's no to the GLC and no to the bus-passes  
Why should we have cheap fares  
To subsidise the masses?

V  
It's no the rate support grant, no to education  
Don't teach the working class too much  
They'll rise above their station.

### Racism

I am a flavour, guess me  
I wanted to be strawberry,  
'Shock Horror, probe they said  
'communist traitor Reds under the bed

I am a flavour, guess me  
I wanted to be chocolate  
They said, put him on probation  
We've done away with immigration

I am a flavour, guess me  
I wanted to be nappolitan  
They said now he's some berserk  
Too idealistic, it could never work

I am a flavour, guess me  
Well, I had to be vanilla  
They said now there's a good chap  
Go date for your country and cut the crap

John Ivenberg



## SAVE THE OXO TOWER CAMPAIGN

Much of the South Bank was undeveloped until the 19th century. But along the waterfront there had been a fringe of buildings long before that. A map of 1682 clearly shows something called the Old Barge House. This has long since disappeared but the alley that ran alongside it still exists and is called Old Bargehouse Alley to this day.

At the bottom of this very narrow passage, the western boundary of Stamford Wharf, is a set of wooden stairs. Beneath them, at low tide, you can still see the original "hard" or cobbled landing stage. The hard is deserted now, but back in the 18th and early 19th centuries it would have been bustling with watermen (the taxidriers of their day) all shouting out what they would charge to row you across to

Somerset House Stairs or anywhere you wanted on the river.

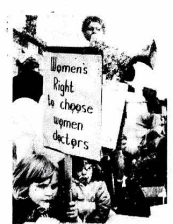
And Stamford Wharf itself is all but deserted too, except for the occasional helicopter which lands on the platform by Old Bargehouse Stairs. This is one of the most modern of old London wharves, which is why it is in such good condition. It was built in two stages. The western part dates from 1908 & was built as the Post Office Central Generating Station. The wharf was later bought by Oxo Ltd who, in 1928, asked Albert Moore F.R.I.B.A. to reconstruct and extend it for them. Shortly after, he designed the Oxo Tower which, when completed in 1930, was the 2nd highest commercial building in London.

Originally the Tower was to have been plain, with the name of the product in lights. But

the London County Council objected to advertising placed on so high a building. Moore hit on an ingenious solution: to make the word OXO part of the fabric of the building itself.

So he designed massive 10 foot high windows in delicate magenta stained glass. It so happened that they formed O's and X's. The LCC had to admit defeat and for many years the Tower was lit up at night, visible as far as Hampstead.

For some years all has been dark, however. But if the Wharf and Tower are saved from being demolished and are developed according to the AWG plan, then it will be lit up again, a symbol of the victory of local people over the faceless money men. If we all support the Save the Oxo Tower Campaign this will bring the victory nearer.



SARAH SANDS PHOTOGRAPH

health authority, who will in turn submit it to the Health Minister. He will then make a binding decision regarding the fate of the hospital, probably towards the end of the year.

A campaign has been set up to save the hospital from cuts or closure, and to draw the general public's attention to the plight of the hospital. A successful demonstration was recently staged, and on April 12th at 7pm a public meeting is being held at Balham Social Hall, Balham New Road, SW12. Everybody concerned is invited.

Harry Read



# GARDENING



1 INS	PLANTS		
2 INS	BOUGHT IN POTS		ANEMONE
3 INS			
4 INS			
5 INS			GLADIOLUS
6 INS			
7 INS			DAHLIA
8 INS			
9 INS	LILY		
10 INS		PLANTING DEPTHS FOR	
		BULBS & PLANTS ON SALE NOW.	

**LOCAL NEWS**  
**ROOTS AND SHOOTS**  
Horticultural Training Centre  
Entrance on Walnut Tree Walk,  
off Kennington Road, SE11  
phone 587 1131

**HAS PLANTS FOR SALE**  
for spring flowering

And a wide range of summer  
flowering for bedding from May  
onwards including:  
marigolds, coleus, snapdragons,  
lobelia, allyssum, burning bushes  
and many more....  
Sold at competitive prices  
Open 9.30-1pm and 2 - 3.30pm  
Monday to Friday

forget-me-not, allyssum saxatile,  
pansies, polyanthus

## Community Education Project - A.G.M.



Locals attending to the main  
business of the evening... getting  
to know each other better!

## Tony of St.Saviours Estate writes ?!"

Some people in Bermondsey  
knew there was an exceptional  
by-election with 16 candidates  
last month. The build-up to  
the election was enthusiastic  
and a lot of simplistic  
political poetry did crawl  
into the nascent campaigns:  
the notorious brick-work  
literature; Mr. O'Grady's  
famous dirty; Simon Hughes  
with his hard-pressed, indigen-  
ous pat.

However, most striking  
was Labour's loss after 60  
years of domination. Why did  
Peter Tatchell lose to Simon  
Hughes? Perhaps if one watched  
the walls and remembered that  
Mr. Tatchell had received 30  
death threats and carried on  
- it was not surprising!  
"Don't vote for Peter Tatchell,"  
"Keep Red Pete out!"  
This is what filled minds  
rather than policies. I don't  
think he got a fair crack of  
the whip.

### an extremist

So, armed with a tape  
-recorder, I went to meet Mr.  
Tatchell at his home in the  
middle of the Rockingham Estate.  
He has a small flat in an old  
building, surrounded by more  
old buildings. From what I hear  
from the hour I was talking  
to him, he seemed the kind of  
man I would have liked to win.  
Some people think of him as a  
"bleeding commu nist," or  
"an extremist." Is the more  
official approach.

I think they could not  
be more wrong. He describes  
himself as a "radical, but  
democratic, socialist in the  
tradition of people such as  
Alfred Salter, who was pre-  
war M.P. for Bermondsey.  
Radical policies can only  
help things for working-class  
people."

As for those who think  
he is a commu nist - he was  
beaten up by the East German  
police for speaking out on  
the suffering of people under  
commu nist rule, and he is  
a supporter of Solidarity.  
I think it can be seen that  
the real Peter Tatchell and  
the man featured in the major  
part of the press were not the  
same.

Mr. Tatchell said of his  
relationship with the "Real  
Labour Party" that he tried  
to change the old Labour vote  
and that hundreds of new members  
had been recruited. "We've  
got people who've never been  
involved in politics before  
to fight off block develop-  
ment in Coin st. and  
fight the closure of St.  
Olaves Hospital. Some polit-  
ical establishments feel  
very threatened by change  
that needs to come after 30  
years. And their only defence  
is to discredit me. If we are  
going to make things better  
for working-class people we  
need radical and fundamental  
change in our society."

## SAVAGE SLEUTH... FRANK

welcome to FRANK'S FACT FILE.  
"We were halfway across Water-  
loo bridge before the bats at-  
tacked. Swooping down low over  
the Royal Festival Hall like  
archangels of death they let  
their wings and primitive sh-  
rieks ripped into the still night  
air sending shock waves  
through the steering wheel  
that just might have been a  
million volts leaping up and  
down my spinal cord. My atten-  
tion advised me to slow down.  
I slipped the clutch, wound  
her up to an impossible scream,  
dropped into third gear  
and launched the beast into a  
vicious attack on an amber  
traffic light. Picking himself  
up off the floor my attorney  
finally agreed to tell me....

- \* ACCORDING TO 1981-82  
mortality rates the average  
man can now expect to  
live to 71, and the average  
woman to 77.
- \* BOOKWORM? Libraries  
in Southwark issued over  
two million six hundred  
thousand library books  
during the period 1980/81.
- \* DOLEDRUMS: 13% of U.K.  
households derive their  
income from social security  
benefits.
- \* KILLER DRUG paracetamol  
was responsible for  
152 fatal overdoses in  
1980. Around 30 standard  
paracetamol tablets can  
kill a healthy adult and  
even less if the liver has  
been damaged before  
through alcohol or drug  
abuse.
- \* KULTURE: In 1981 there  
were 86 million visits to  
the cinema, 49 million to  
museums and art galleries,  
37 million visits to the  
theatre (including opera  
and ballet), and only 24.4  
million visits to football  
matches.
- \* PEDAL POWER: For the same  
breathing rate a cyclist spends  
four times that of a  
pedestrian.
- \* DEVOTID: In order to obtain  
maximum tax relief in any one  
year you should marry a one-  
parent invalided person over  
the age of 65 on 6th April.
- AND NOT MANY PEOPLE KNOW THAT  
Seeya - FRANK

## Simon Hughes

### and his plans ....?

When we interviewed Simon  
Hughes a couple of weeks after  
he was elected MP for Bermondsey,  
SE1 could find nothing very  
controversial, at least in its  
books.  
Hughes sees himself as a  
'community politician' first  
and foremost, responsive to what  
local people see as their needs.  
Regular readers will know the  
various issues that the community  
has been concerned and fighting  
about for ages. Broadly  
speaking, Simon falls very much  
in line.

He supports the AVG plan  
for housing on the Coin St sites,  
and is against office develop-  
ment there, and generally else-  
where in SE1. He supports  
community hospitals, like St.  
Olaves, and doesn't like the  
LDDC.



When you add that he is  
31, single, and not locally  
born or raised, he has many  
similarities to Peter Tatchell.  
But he does differ with the  
local Labour Council and  
various community groups on  
some of the practicalities of  
'community policies'. He adopts  
a pragmatic approach.  
Rather than get involved in  
parliamentary politics in depth  
straight away, he explained he  
would be concentrating on case-  
work and being a constituency  
MP. He was sure that if he did  
a better job on this than Bob  
Mellish, then he would secure  
the seat for the general  
election.  
To make sure he does this,  
Simon is setting up a team to  
help. He will have two personal  
assistants: one at the House  
of Commons, keeping his diary  
and doing secretarial work,  
the second dealing with 'case  
work' - the various problems  
and complaints which Bermondsey  
people bring to their MP.  
There will also be a research

### a barrister

Simon has still to finish  
off outstanding court cases  
that he took on as a barrister,  
before he was elected. But  
after Easter, he aims to spend  
90% of his time on constituency  
work, at least.

### Labour Party

But what were the differences  
between Peter Tatchell's  
policies and his own?  
In summary, the reply was  
that it was a difference in  
style and approach. He was  
against the doctrinaire style  
of the local Labour party.  
Examples which were given  
included Southwark Council's  
office policy. He regarded a  
development as naive, and  
thought that they should have  
said that there might be  
exceptions, perhaps for new  
technology offices. He  
wasn't keen on the decision  
to refuse to have the Techno-  
park by South Bank Poly, as  
it was not an ideal site for  
housing.  
Although he didn't like the  
LDDC, he thought it stupid for  
the council to not talk to it  
while it existed.

Funding was another area he  
didn't see eye to eye with the  
council. He wasn't sure how  
effective things like the  
women's committee were, and what  
value for money the ratepayer  
got from them. It was dis-  
appointing to see the same  
people on 8 different groups,  
all getting funding. They  
appeared to create community  
groups for themselves.  
Still on this, Simon said  
that the council should first  
do well what it was already  
responsible for, before it  
looked at taking on anything  
else. If this meant that  
after tackling housing and  
social services, it didn't  
have the resources to do much  
on employment, say, then the  
council should act as a co-ord-  
inator to bring together  
resources available elsewhere.

### large criticism

Another large criticism of  
Southwark was that its decision  
making was actually taken by  
the Labour Policy group, not  
the committees of the council.  
This meant that the council was  
almost as closed as its  
predecessor in its decision  
making, although they had a  
commitment to open government.  
Having a large majority on the  
council didn't mean that the  
Labour Party had a divine right  
to do everything in its mani-  
festo - especially as only 44%  
of the electorate voted for them  
in May 1982, and now 57% of  
Bermondsey voting in February  
had supported the Liberal view.  
Finally on Southwark Council,  
he regretted that Labour hadn't  
done what was necessary in the  
Housing Department - a radical  
shake-up. He felt that they  
should have been willing to  
pay off senior people to bring  
in a more dynamic, new approach.

### "anti-Tatchell"?

Finally we got down to the  
by-election campaign. Hughes  
was very defensive on the charge  
of having campaigned more as  
'anti-Tatchell' rather than on local  
issues. Simon said that the  
media coverage of the election  
had been very bad, but he had  
made a particular point of not  
talking about Peter Tatchell's  
personality. I thought Simon's  
attitude to the press somewhat  
contradictory, in that he  
condemned them on one hand,  
then made a point of using  
press cuttings on all his later  
election leaflets. The  
continuing repetition of the  
slogan 'The only one to beat  
Tatchell' could hardly be  
described as campaigning on  
local issues.

## LOCAL

MRS ROBINSON'S BOOKSHOP  
NOW HAS A GOOD SELECTION  
OF NEW BOOKS FOR CHILDREN.

SHOP 3, BENSON HOUSE  
HATFIELDS, SE1

11 to 7 Monday to Friday  
10 to 5 Saturday

## BOOK SHOP

## Small Ads.

LET SE1 DO THE WORK FOR YOU

FOR SALE WANTED  
JUMBLE SALES  
BABYSITTING  
PLAYGROUPS TO LET

ADVERTISE IT  
Free to local residents in SE1  
Send your small ad into SE1 at  
12 Meymott St by April 27th -  
anything 'non-commercial'

C.N.D.  
Brixton and North Lambeth CND  
meets on the first and third  
Tuesdays of every month in the  
backroom of the Loughborough  
Hotel (a pub really), Lough-  
borough Road, SW9 at 7.30pm

In the interview, Simon's  
biggest criticism of Peter  
Tatchell was that he was  
naive "and would have been a  
puppet" of the local Labour  
Party, which wasn't healthy.  
Tatchell was also insensitive  
in his campaigning, bellowing  
through a megaphone at  
housing estates. Simon did  
say that he found a lot of  
the Labour Party left-wing  
personally unpleasant, but  
that Peter wasn't.

Simon gave as his priorities  
as Bermondsey MP firstly that  
he would be available to his  
constituents for casework.  
Secondly doing something about  
jobs in the area: talking to  
everybody available who is in  
a position to do something  
about producing jobs.  
Thirdly, acting as a watchdog  
for the individual in connection  
with other authorities,  
including the council.  
Fourthly, implementing political  
policies.

**surgeries**  
Liberal advice surgeries will  
be held every Saturday at the  
John Harvard Library in Borough  
High St, between 10.30am and  
12.30pm. Simon Hughes MP will  
be in attendance the last  
Saturday of every month.  
Other surgeries are at the  
Liberal Association Centre,  
30 St James Rd, SE16 1st and 3rd  
Thursdays, Rotherhithe Civic  
Centre 2nd Thursdays, and Mayors  
Parlour, Town Hall, Walworth Rd,  
4th Thursdays. All 7 to 9pm.  
Write to Simon Hughes MP at  
House of Commons, SW1, or ring  
the Liberal Association on  
231 0412.



# WHAT FUTURE

After the 1982 re-organisation of the National Health Service, Waterloo is now part of the West Lambeth Health District. The Authority which is responsible for the planning of the services of this area has now produced a Plan for the District for the next two years.

The Plan has been discussed by a number of groups in the Waterloo area, including the Health Project, Barley Mow Clinic Users Group, Tanswell Mothers and Toddlers Group, Pensioners Health Group, and the Waterloo Counselling Group.

In the introduction to the Plan, it is explained that the "West Lambeth Health Authority faces a bleak future in terms of the resources which will be available to it." This means that any developments to services must be funded from cuts in the resources for existing services.

The groups were concerned about a number of proposals in the Plan. These included:

- \* Plans to reduce the number of beds at St Thomas' Hospital - there should be assurances that adequate community services will be provided if there is to be a reduction in the length of stay in hospital.
- \* If waiting lists do increase due to the reduction in bed patients from the West Lambeth Health District do not suffer - given that a third of patients admitted to St. Thomas' come from outside the district.
- \* The need for assurances on what information will go on computerised records and who will have access to them
- \* That there is no money actually allocated for an increase in community dietetics services which is proposed, nor for the proposed relief services to families with handicapped children
- \* The Plan did not outline increased community provision for the elderly which is felt to be necessary if length of stay in hospital is to be reduced and in view of the increasing number of elderly in the Waterloo area
- \* It was thought that the proposed Mental Health Centre seemed to be covering too broad a spectrum of problems. It would be more practicable to be more specific, and take a group for whom hospital admission should be prevented and develop a model of care to meet those needs. There should also be more emphasis on less institutional care for the old mentally infirm, for example.

# NO BALL & CHAIN!

Yet another stretch of London's riverbank is under threat from the developers' ball-and-chain tactics. This time it is the Victorian dock area between London Bridge and Tower Bridge, known as Hays Wharf.

Most of the land is owned by the St. Martins Property Company, which in turn is controlled by the oil-rich Kuwaiti Government. In order to speed up the development, the London Docklands Development Corporation (LDDC) have stepped in with a draft plan. In a bid to by-pass local opposition - from both Southwark Council and local community groups - the LDDC is acting as agent for St. Martins and as the planning authority. The LDDC will try to obtain a Special Development Order from the Environment Minister (Tom King) to enable the Kuwaitis to start work before the end of the year.

The type of development is sadly familiar. Predictably it ignores the needs and wishes of local people. Most of the land will be given over to new office buildings - a staggering 2.2 million square feet - with a few luxury flats and a private hospital thrown in.

The LDDC has specifically kept its options open on a high-rise office block in the centre of the area and a 166foot monstrosity next to London Bridge. This is in spite of the last planning inquiry - and even former Environment Minister Heseitine - throwing out a similar scheme.

The North Southwark Community Development Group (NSCDG) believes that the demand for offices is over-stated. Many firms are moving out of London, and office jobs are declining as new technology is introduced.

At the Tower Bridge end of Hays Wharf, there is a tentative plan for a public park and luxury high density

accommodation, which the LDDC says will not be suitable for families. There is no commitment in the plan to provide homes at a fair rent for those homeless or on Southwark's waiting list. Quite the reverse in fact. The only

existing council estate in the planners' zone (Bethel Estate) is doomed to be replaced by an anonymous 'commercial unit'.

Above all else, it is the undemocratic nature of the LDDC which is at issue. The new plan bears a marked similarity to the one which was rejected by a public inquiry after a long campaign by the NSCDG and local residents. This time, however, there will be no public inquiry, and the LDDC has no obligation to consult anyone apart from the landowners. Southwark Council, exasperated at the LDDC's 'build now, talk later' attitude, has now withdrawn its co-operation in protest.

As the few remaining businesses move out and the demolition contractors move in, one thing is certain. The future of Hays Wharf will not be decided by the needs of the local people, but by the profit motive of big business and the Kuwaiti Government.

## IN LIVING MEMORY



A tree was planted in memory of Jim Patrick on March 17th by his widow, Lil, and many friends and local people who knew him through his work for the community.

The tree is in St. Johns Churchyard, off Tooley Street.

Jim Patrick's seat as a Southwark councillor in Riverside ward became vacant when he died.

The by-election took place on 10th March 1983, two weeks after Simon Hughes was elected to parliament in the Bermondsey by-election.

Result:  
 Ronald Tindall (Liberal) 1584  
 Edward Hart (Independent Labour & Tenants) 780  
 Michael Idun (Labour) 233  
 Kevin Mason (New Britain) 118  
 Michael Pike (Tory) 77  
 Robert Gordon (Communist) 9

Turnout 43.6%

Ron Tindall lives on the Dickens Estate, SE16.

## join us

The SE1 group warmly invite you to come and take an active part in your local paper.

You can help with SE1 in a wide variety of ways and spend as little or as much time as you please. We gave a list in the last issue (March) of what there is involved.

Please let us know if you have any information or news which you think might interest other people in SE1. Send us a letter, or article or photo, or drop in at one of our meetings.

Our next issue will appear on May 7th. All contributions must reach us by Wednesday

27th April at 12 Meymott St, SE1. Meetings are on April 13th and 27th.

To contact us, ring John on 928 4748, or leave a message at Waterloo Action Centre (261 1404) or ring Rob on 735 5168.

### WHERE TO GET SE1

In case you have difficulty getting hold of a regular copy of SE1, here is a list of our usual outlets:

#### WATERLOO AND BLACKFRIARS AREA:

Brook Drive: Wells  
 Hercules Road: Ellis newsagent  
 Baylis Road: Purdoms and  
 Waterloo Action Centre  
 The Cut: Panbros and Potters  
 Waterloo Road: Dells newsagent  
 Colombo St: Community Centre  
 Hatfields: Mrs Robinsons Books  
 Borough Road: South Bank Books  
 Webber St: N&F

#### BOROUGH

Southwark Bridge Road:  
 Borough Community Centre and  
 Toms

Great Suffolk St: Welfare &  
 Tonsy, newsagents.

Redcross Way: newsagent  
 Union Street: Tiernies  
 Borough High St: Newby,  
 and no. 208

#### ELSEWHERE:

Tooley St: Tower Mini Market  
 Snowfields: newsagent  
 Porlock St: newsagent  
 Harper Road: Pat Gibbons