

SE1

MAY '83 15p MONTHLY. NUMBER 15

TAKE COURAGE

The massive seven and a half acre Courage Bottling plant on the South Bank near Southwark Bridge has been bought by the GLC.

The site - which many local people feared at one time would be handed over to property speculators to build more offices is now to be used for homes and industrial jobs for local people.

The site was bought by the GLC as part of its 'community areas' policy. This policy is a new attempt to halt the decline of inner city areas like SE1 which are under threat from the wrong kind of commercial developments which mean that local people, their homes, jobs and community facilities are often sacrificed to developers' blight.

The new policy will stop the decline of these threatened communities and give local people what they have asked for so many times: jobs, homes, and amenities.

Already plans are being drawn up to build homes on the site and these include plans for sheltered housing for old people.

Courage's moved out recently (like so many other firms) to Reading, leaving more local people jobless and the area deprived of a basic employer.

Southwark Council has welcomed the GLC's move and has said that it will be co-operating fully with the GLC in making sure that this land is used for the benefit of local people.

Ted Bowman, chairperson of one of the local groups that has been campaigning for homes in this area, the North Southwark Community Development Group, told SE1: "The long battle we have been fighting together to bring our area back to life is now beginning to pay off and we hope the purchase of this site is only the beginning."

What ideas do YOU have for this site? Both the GLC and Southwark Council are considering proposals now: Why not write to SE1 giving YOUR view? We will forward all suggestions to the two local authorities.

WITH THE WARM WEATHER ON THE WAY, IT'S TIME TO GET YOUR 'SE1' T-SHIRT. LET PEOPLE KNOW THAT YOU ARE NOT A TOURIST, BUT LIVE HERE! HIGH QUALITY SHIRT WITH AN EXCLUSIVE PRINTED DESIGN. ADULT AND CHILDREN SIZES. ASK AT WATERLOO ACTION CENTRE FOR FURTHER DETAILS.



WATCH THIS SPACE

I'M AN S.V.

ARE YOU?

Page 7.

inside!

TOM KING - ON YOUR BIKE page 8

CRACKING UP page 5

GARDENING page 6

FRANKS FACTS page 7

A BAD FIT AT BURTONS page 3

RATES RIP OFF page 4

LEND A HAND page 7

PECKHAM BOOKFAIR page 2

On Wednesday 27th April a public meeting was held at Barley Mow Clinic about the possible uses of a small plot of land that is not suitable for housing on the Campbell Building Site. Most of this area has been designated for family housing with several units of purpose built accommodation for the disabled. The family units range from 5-9 person dwellings and are planned for the perimeter of the site which stretches from Century House in Pearman Street to Baylis Road, then down to Frazier Street and backing on to the houses in Pearman Street. A children's home is also planned and will be sited in Frazier Street facing Santley House.

The plot of land under discussion is at the end of the row of houses in Pearman Street that will back on to the site and its size is approximately the size of 3 houses.

The needs of the area were discussed, as many services are inadequate and under pressure and with the increase in population obviously the pressure on existing services would be even greater.

Previous ideas for Services in area were outlined as follows:

CHILDREN A larger or second BABY CLINIC to cope with increasing demand. The existing clinic at Barley Mow is very busy and under-staffed. The Health Visitor there also holds a weekly clinic at the Moffat Centre in Samcroft Street which serves Kennington &

Vauxhall and she already has more home visits to families than she can cope with.

YOUTH A counselling service for anorexia, drug abuse etc.

A Minor Accident Treatment Unit with perhaps a trained nurse to give advice, refer to hospital when necessary and dress wounds. This would relieve pressure on the Casualty Department of St. Thomas's and perhaps save an unnecessary long wait for something minor which could be dealt with elsewhere.

MEN Health Check Ups
Unemployment (Redundancy Support Group)

WOMEN Well Woman Clinic
Fitness & Relaxation Classes
Ante & Post Natal Groups

CONTINUED ON PAGE 4

The local newspaper!

2 PLANNING SHORTS

Coin Street — What Next

If you don't know what all the fuss is about over Coin Street, or what to find out more about the two competing schemes, Lambeth Council have arranged an exhibition on both.

It will be held locally at: National Film Theatre, 3rd to 7th May. Consumer Advice Centre, Lambeth Walk, 13th-21st May. Tues, Thurs, Fri, Sat 9.30 - 4.15. Wed 9.30 - 3.30pm. County Hall 21st May-3rd June 9am to 6pm.

Tatts

Local people have lost the fight against a late night drinks licence which was applied for by Tatts 'Superpub' in Waterloo Road (next to the Old Vic). Camberwell Green Magistrates Court granted a late licence, as long as food was being served.

The GLC have yet to decide on an application for an entertainments licence.

Local objections were based around the additional nuisance late night drinkers would cause to residents, including slamming car doors and fights. Shortly after the Royal Vic pub had re-opened as Tatts last year, a local resident was stabbed to death as a result of a brawl outside.

South Bank Scheming

It was revealed at a recent meeting that the idea behind appointing an architect for the South Bank was to get better use of the space between County Hall and the National Theatre, on the riverfront.

Cedric Price was appointed by the GLC Arts & Recreation Committee to produce plans to 'liven up the South Bank'. Tony Banks, the chair of the committee, attended a special meeting of the Waterloo Community Development Group to explain the thinking behind this. As there had been no consultation with local groups before the appointment, there was some concern about why it was made.

There should now be further contact between the architect and the community on possible ideas.

Boat Trip

There will be a boat trip to Richmond on Monday 2th June at 11am from Westminster Pier. This trip is organised by Waterloo Amenities Groups and will cost £1 per person - a special offer from Waterloo Amenities!

If you would like to take advantage of this offer, please

get a form from Waterloo Action Centre, and return it with either a 25p deposit, or the full amount to: Dolly or Charlie in the shopfront at the Centre. WAC is open 10am to 2pm Monday to Friday - or you can phone 261 1474.

PECKHAM'S BOOKFAIR
MAY 19th - 20th - 21st
THURS 15 - FRI 15 - SAT 12-5

BELLS GARDEN TENANTS HALL
19 BULLER CLOSE SE15
BUCKS 63, 78, 36, 12, 171

BOOKS FOR ALL - PLUS STORY TELLING, STEEL BAND, CHILDREN'S THEATRE, CARIBBEAN FOOD & MUCH MORE
ADMISSION FREE

Thanks to Southwark Amenities Committee, Southwark Council for Community Relations, and the Bookplace

Living In Dog Free Area Stamford St.

Waterloo residents concerned about proposals for a hostel for the single homeless in Stamford Street will shortly get an opportunity to air their views.

The GLC has put forward a plan to use what was an old British Rail hostel as a small hostel for the homeless, for no more than 25 people.

Details of the meeting are not yet fixed, but should be announced quite soon.

SE1 EXTENDS A WARM WELCOME TO THE NEW 'NORTH LAMBETH NEWS' COVERING THE NEIGHBOURING AREA OF KENNINGTON, LAMBETH WALK, WALCOT SQUARE AND VAUXHALL. Thanks for the Gingerbread article!

NELSON'S COLUMN



The annual Peckham Bookfair will be held this year on Thursday 19th to Saturday 21st May with a new venue in BELLS GARDENS: 19 Buller Close, SE15. There will be creche facilities.

All the usual activities: book displays, story telling for the young, poetry reading, school band, face painting, videos. There will also be a theatre group. So we hope you will all come and enjoy yourselves. I think over the years that we have had the Bookfair that this is one way we have of bringing the community together.

Programme for Bookfair 1983:

Thursday 19th May: 1 to 5pm 1.30 and 2.45 David Moses with stories and music for young children
3.30 Local school band
Friday 20th: 10am to 5pm 10.15 and 11am: 'Common Lore' stories for 6-8, then 8-10 year olds.
1.30 Puppet show
2.30 Ujamaa theatre
3.30 Local school band
Saturday 21st: 12 to 5pm 12.30 Steel band/face painting
1.30 Stories by Beulah Candappa
2.30 Disco-dance for under 14s
3.30 The 'Charlie and Smernov Show' for children

Badge making and refreshments throughout the Fair.

Mint Street AGM

The Mint Street Adventure Playground will be holding its Annual General Meeting on THURSDAY 26 MAY at 7.30 pm. On this occasion we report back on our activities over the past year and elect a new committee to manage the playground for the next year.

Anyone who is interested is very welcome to come along at 7.30 pm. There will be a display of photographs and work done by the kids and play-leaders and possibly a video show of playground activities. We will also be providing some refreshments. Do come if you are interested.

If you want to know more about opening times etc the playground number is 403-3747. The site is in Lant Street, SE1 (opposite the Fire Station in Southwark Bridge Road) and the playleaders' names are Anthea, Gary and Michael.

Sport Contained

Now here is an interesting way of solving a storage problem! Just get hold of an old freight container from British Rail, hire a crane to put it in place, and hey presto, an instant secure store!

This novel solution was used for the Baylis Road Multi-Sports Area equipment store, and the container was winched into place in mid-April.

If you are a local resident or group who wants to use any of the equipment - football, basketball, tennis etc - contact Elaine at the Waterloo Action Centre for further information.

SOUTHWARK FUN AND SPORT WEEKEND

On July 2nd and 3rd we intend holding a Fun & Sport Weekend in Southwark Park. Southwark has a new Strategy for Leisure and Recreation which seeks to maximize community involvement.

There will be many events covering all the leisure services provided by Southwark's Amenities Committee. We intend to kick off the weekend with a get-together in which we hope you will tell us your ideas for future leisure provision in Southwark, so if you have any suggestions please let us know in advance in order to ensure proper discussion. There will also be extra events such as Banger Racing and a 5 mile road race.

If any groups or T.A.'s wish to set up events, for instance welly boot throwing or Tugs of War or to stage a small play or exhibit anything they should contact our Entertainments Officer Bryan Watts at the Town Hall who will give help, assistance and advice.

We want this to be a weekend that goes with a BANG but also importantly we want everyone to come along, participate and enjoy themselves.

If you feel that you would like someone to come along and talk to you Tenants Association or community group, please contact either John Wentworth, Chair of Amenities, or myself c/o Town Hall -

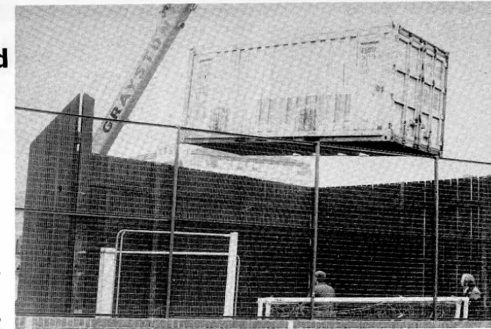
Chris McKie
Vice Chair

Any

Old Metal

The old Metal Box Factory in Riley Road, SE1 is being bought by the Jobs and Industry Committee of Southwark Council, to be converted into small workspaces.

The converted units will vary in size from 600 to 3000 square feet. With a total of 40 units, it is expected that they will provide job opportunities for around 200 people, with a total of about 53,000 sq.ft of industrial space.



Legs Eleven!! 3

Girls' and women's football training has started in the area. Interested? Come along and bring your friends!

8 to 14 years: Waterloo Adventure Playground, Baylis Rd, every Thursday 4.30 to 5.30pm over 14s: Colombo Street Sports Centre (off Blackfriars Road) every Friday, 6 to 7pm.

For more information, contact Yvonne at Colombo St, phone 261 1658.

And for all girls under 18, Colombo St. is looking for players for a 5-a-side tournament - under 14s and under 18s.

A Bad Fit For Burtons

Yet another inquiry into a proposed office block in Waterloo is underway. The proposal this time is for a 21 floor office tower on the corner of Baylis Road and Waterloo Road, over Burtons shop. The inquiry started on April 19 at Lambeth Town Hall.

In order to get permission for this massive building Burtons offered Lambeth Council money to fund the laying out of Baylis Road open space and for a small plot of land. Lambeth thought that such an offer warranted despite very strong opposition

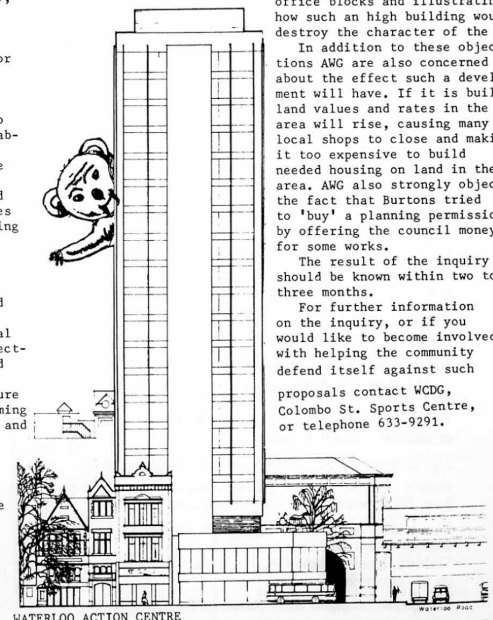
from the Association of Waterloo Groups. Thankfully, the GLC directed Lambeth not to approve the proposal so Burtons were forced to appeal, and hence a public inquiry is taking place.

Fortunately, the present Lambeth Council also oppose the proposal and Burtons at the inquiry are facing objections from the GLC, Lambeth and AWG. Burtons are arguing that the office building is needed and will be let. They also contend that the office block will improve the quality of the area. All of the objectors challenge these points, pointing to the large number of existing empty office blocks and illustrating how such an high building would destroy the character of the area.

In addition to these objections AWG are also concerned about the effect such a development will have. If it is built land values and rates in the area will rise, causing many local shops to close and making it too expensive to build needed housing on land in the area. AWG also strongly object to the fact that Burtons tried to 'buy' a planning permission by offering the council money for some works.

The result of the inquiry should be known within two to three months.

For further information on the inquiry, or if you would like to become involved with helping the community defend itself against such proposals contact WDCG, Colombo St. Sports Centre, or telephone 633-9291.



BURTON GROUP ESTATES
BAYLIS ROAD ELEVATION

KENNINGTON & WATERLOO GINGERBREAD

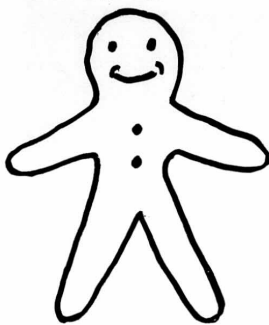
Kennington and Waterloo Gingerbread came into existence officially on December 9th 1982. The group actually began in late September with six lone parents, all from different circumstances. Two were separated, one lady was widowed fourteen years ago and three were divorcees, and their ages ranged from early twenties to forty plus. Among the six there was only one male, who appeared on the scene at the second informal meeting. I had been warned that he was shy - but he certainly showed no signs of shyness on that first night. In fact we all integrated extremely well, probably because we had a common factor - we were all lone parents.

Nearly six months later, that is no longer true. We are not all lone parents. That same "shy" male and myself were married just before Christmas. Fast work, you may say - I prefer to call it "a bit of Gingerbread magic".

People join Gingerbread for a variety of reasons - loneliness, support, friendship, social activities or maybe for the kids. Children are of paramount importance in Gingerbread groups, and a parent who is lonely, housebound and worried will certainly pass some of this on to his/her children. Gingerbread is a self-help group, we offer support and friendship to each other, plan our own social activities and raise our own funds. The only qualification needed to join is that you are a parent. You may be single, separated, widowed or divorced, with or without the custody of your children - all are welcome.

We meet on Tuesday evenings at Lambeth Mission, Lambeth Road from 7.30 to 9.30 p.m., and children can come too. The first three weeks are free, then a yearly membership fee of £1.50 is paid and subs of 25p are collected each week.

For further information about Gingerbread ring Gina or Bob on 582 6136.



YOUR RIGHTS

URGENT NEEDS PAYMENTS

Remember these may be available even if you are not on Supplementary Benefit if you can show that such a payment is "the only means by which serious damage or serious risk to the health and safety" can be avoided. A recent case in Clapham illustrates this. Mrs. H. was in receipt of invalidity benefit and rent and rate rebates (i.e. not receiving supplementary benefit). She faced disconnection for electricity arrears. Mrs. H. successfully appealed to a Supplementary Benefit Appeal Tribunal who upheld her claim for £175 which

was required by the Electricity Board as a deposit for a meter. Mrs. H. was able to produce medical evidence to the tribunal of the bad effect that fuel disconnection would have had on her.

If worth applying for on urgent needs payment, especially if you can show that without such a payment there is a serious risk to health and safety. And if at first your claim is refused it is worth appealing.

BENEFIT SCRAPPED

From April 1983 Industrial Injury Benefit (previously paid during the first six months of a person's absence due to industrial injury) will be abolished. Instead, for the first eight weeks of absence you will be paid (statutory) sick pay through your employer then you will receive sickness benefit from the DHSS. The new system will probably mean that you will be worse off.

Industrial disablement benefit and special hardship allowance will continue to be paid by the DHSS but not until 90 days after the accident.

RATES RIPOFF

Tenants on the new Housing Benefit in Lambeth were recently given quite a nast shock by the Council.

The shock delivered by the postman in the form of a rate demand had people rushing to their telephones and advice centres in a state of utter disbelief.

Waterloo Action Centre was inundated with people coming in to complain of exorbitant rate demands two or three times what they had expected.

When one of the workers finally managed to get through to somebody at the housing benefit section at Lambeth Town Hall, it turned out that one of their computers had been causing problems. It was responsible for excessive rate demands - it's funny the way computers which were hailed as highly efficient problem solvers and time savers often seem to create more trouble. Or is this a case of the housing benefit section using the computer as a scapegoat for its own difficulties in coping with this so called 'new' and more 'efficient' way of helping people with rent and rate bills?

One thing is for sure, though. The new housing benefit has been handled badly and some claimants have been caused a great deal of anxiety unnecessarily.

CONTINUED

FROM FRONT PAGE

ELDERLY Chiropody
Fitness & Yoga
Lunch Club

GENERAL Stop Smoking Clinic
Alcoholism Group
Skin Clinic
Environmental Health -
Advice & Information

All of these suggestions were discussed and felt to be needed and of use to the community. Further ideas were called for and the following were suggested:

A Multi-Purpose Centre to house the following:

1. A meeting room for evening meetings for all local groups
2. A Mother & Toddler area with creche facilities to give the mums a much needed break from the kids and the chance to meet other mums and arrange activities, talks etc.
3. Keep-fit and weight training for men.
4. A room for the Children's Health Club as they only have the use of Waterloo Action Centre at present and need a room for activities, storage and display.
5. Youth facilities - a youth club.
6. Squash Courts
7. Staff rooms for storage and administrative work.

It was also suggested that any new building must have facilities for the disabled e.g. wheelchair ramps, wide doorways, lifts and toilet facilities.

Other ideas were an All-Night Chemist as there is no longer this service in London, a Laundrette and an evening Doctor's Surgery for people who work.

A lively debate followed on the need for a swimming pool in the area and some of our elder residents spoke of the Pool at Lambeth Baths that was destroyed during the last war and never rebuilt. It was unanimously agreed that a pool was needed in the North Lambeth area as the nearest ones are Kennington Lido (Summer only), Clapham Manor & Streatham. There is of course the new Leisure Centre at the Elephant & Castle, but it is not suitable for serious swimmers and costs more to Lambeth residents as membership is only open to Southwark Residents.

A representative of the Pensioners Health Club supported the idea of a local pool as most of the pensioners wish to learn or take up swimming again but cannot travel far. This was re-inforced by Tanswell Mother & Toddler Group who at present use the staff pool at Guy's Hospital every week, but find transporting Mums and small children very difficult.

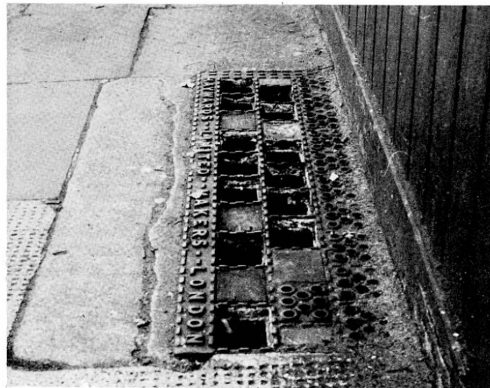
If anyone has further ideas or would like to see the site plans, please contact Jeanette Copperman at Waterloo Action Centre - 261/1404.

CRACKING UP IN SOUTHWARK.

BY THE NORTH SOUTHWARK PENSIONERS ACTION GROUP (NORSPAG)

Southwark Council is responsible for pavements in North Southwark. This is the result in Marshalsea Road, NORSPAG want to compile a directory of bad and damaged pavements in

North Southwark. If the pavements in your area are like Marshalsea Road, write to us with the location and we will arrange to photograph it and report it to the council.



These are some of the 50 different photographs taken of bad pavements all within a quarter of a mile radius of Borough Community Centre.

What has happened to Southwark Council's campaign against parking on pavements? When are pavements going to be given back to pedestrians? In next month's issue, we will tell you about the legal position on pavement parking.

Replies to Harry Read, Secretary of NORSPAG, 56 Southwark Bridge Road, SE1 Phone 928 6476.



Dear SE1,

We at NORSPAG, have noticed that since the publication of our article and pictures on the conditions of pavements etc. there has been a sign that the Highway patrol has been around, and some repairs have been started. There are enough bad pavements etc. to solve the unemployment problem. We all appreciate the difficulties there are, relating to Pavements, in the whole of London. But let our council give a lead. After all its our Borough we are concerned about, and it is our old, disabled and blind people who get hurt.

At the same time let us be sensible and try at the same time to prevent our pavements getting broken. Let our slogan be People for Pavements, and Cars for Roads. Because soon it will be traffic lights on pavements, and pedestrians paying road tax. This is not impossible, remember Geoff Howe hasn't been to Southwark 'yet'. We at NORSPAG have been pressing for an improvement but in spite of this, we have noted the conditions of pavements have got steadily worse. We have noted too, that pavement parking has increased. Does this suggest anything to you?

If you the readers know of a bad section of pavement let us know.

Surely there must be Bye Laws to prevent this parking on pavements, if not then let us have legislation now.

Stop this parking on pavements which can be dangerous.

Stop this breaking up of paving stones which is dangerous.

Harry Read (SECRETARY NORSPAG)

NORSPAG is a campaigning group trying to improve conditions for pensioners in North Southwark. If you are interested in coming to our meetings, we meet fortnightly at the Borough Community Centre, 56 Southwark Bridge Road, on Thursday afternoons at 2.30pm. The next meeting is May 19th.

COMMUNITY PLANNING WORKER

Waterloo Community Development Group has been active for 11 years helping local residents to influence planning decisions that affect their community.

We now need a full-time worker to help us. Energy, initiative and a genuine commitment to our aims are more important than knowledge of planning or formal qualifications.

Salary up to £9609 inclusive of London Weighting depending on age and experience. For job description and application form contact WCDG, Colombo St. Sports Centre, Colombo St. SE1. Applications returned by May 20th.

NORTH SOUTHWARK PLAN

A PLAN FOR COMMUNITY GROWTH

The new draft of the North Southwark Plan will be ready for consultation 1 June to 8 August.

The Plan looks at the future of North Southwark over the next ten years. Housing, offices, jobs, transport, community sponsored projects and the Surrey Docks are some of the topics included in the Plan.

If you want to find out more about the Plan and give your views to Southwark's Councillors watch your local press for further information. Southwark Council will send all residents in North Southwark details of the full consultation programme.

Any queries telephone Harry Barlow on 703 6311 Ext. 2321.

Planning Division, Southwark Development, 30-32 Peckham Road, London, SE5 8QP.

GARDENING

WITH
KEIB THOMAS



STARTING A NEW GARDEN!

As the lucky people who have just moved to Hatch Row Housing Coop know, starting a new garden is both exciting and a little mind boggling! Where to start? How to start? One of the best ways is to sit down and make some sort of a plan on paper. What do I need to know before that dream garden becomes a reality?

1. What direction does the sun travel over the garden? What parts are in shade and what parts get the hot afternoon sun? There are plenty of plants that you can grow in either full sun or total shade. There are only a FEW that will grow in sun AND shade. Therefore it is important to get the right plant in the right place!

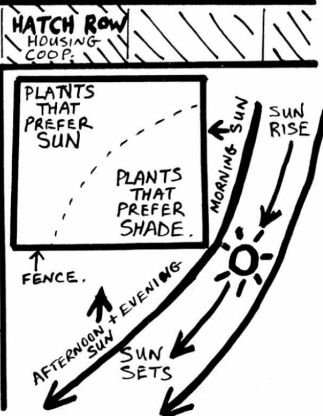
2. What sort of soil have I got? Do I need to improve it? Peat will unstick the cloggiest clay and it will make light sandy soil hold more water. Rough soil grows poor plants! Plants that dry out - die!

3. Dig it over as deeply as possible, up to 2 ft deep! This will open up the sub soil and allow roots to go deep for water and anchorage. It will also tell YOU what sort of soil your plants are having to cope with. It might also reveal rubbish and waste that your builder has 'hidden away' or that the previous tenants 'dumped'. Without wishing to alarm anyone, I suggest that you grow flowers rather than vegetables for the first year on the basis that on an inner city site you never know what chemicals are in the soil. Do check out the history of the site, it might have been a factory in the recent past. However if you wish to grow tomatoes, lettuce, etc why not grow them in a 'grow-bag' and flowers in the garden soil.



SUN BATHERS PARADISE.....

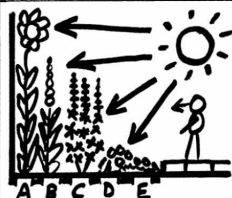
HATFIELDS, SE1.



THE SQUARE GARDEN PLOTS ARE IN A SUNTRAP, BUT THEY ARE SHADED BY SIX FOOT HIGH WOODEN FENCES.

BE BOLD, AND BEWARE!

When making your planting plans, put your plants in bold groups rather than spread out, in a mixture that will end up looking very 'bitty'. Put 2 or 3 lupins together and they will add character, as will all your other plants if arranged together in clumps. Think carefully about the height of each plant and how the colours will go together. Some plants are grown for their beautiful foliage rather than their flowers, i.e. Ferns (great in shade as are foxgloves). Next month I shall deal with shrubs and trees. In a new garden, do remember that some trees can grow up to 20ft - not much fun for your neighbours if it blocks out their sun! They also have strong roots that head straight for the nearest drain or water pipe!



A - TALL PLANTS LIKE - SUNFLOWERS, HOLLYHOCKS, SWEET PEAS (UP TO 6 FOOT HIGH)

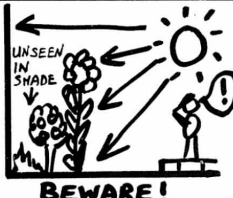
B - DELPHINIUMS, TALL DAHLIAS, TALL GLADIOLUS (4FT.)

C - LUPINS, LARKSPUR, DAHLIAS (3 FEET HIGH)

D - BEDDING PLANTS - GERANIUMS, MARIGOLDS, ANNUALS - POPPIES, CALENDULA, CLARKIA } 1-2 FT. HIGH.

E - LOW GROWING ANNUALS, BEDDING PLANTS, ALPINES ETC. ALYSSUM, NASTURTIUMS, AGERATUM, PANSIES, STOCK.

Finally, the best tip for a new garden is to keep your eyes open when out and about, what are other people growing well in the nearby gardens - Go on, be 'nosey' and ask other peoples advice on what they are growing down the street from you. From Platform 'A' on Waterloo East station I have spent many hours over the last few years admiring not only Roupell Street chimney pots but their well kept back gardens! There are climbers of all kinds on the walls - ivies of every shade, tall roses like 'Peace' and 'Queen Elizabeth', rambling roses, Virginia Creepers that are aflame in the Autumn, Clematis of many colours, Wisteria ... missing a train is such a pleasure! If your street or estate would like some help with how to get some colour into window boxes, landings, or gardens, do get in touch with me at the Community Education Project, 928-8501. I'd be pleased to visit and talk about gardening with you.



BEWARE!

TEXTILE EXHIBITION



'DIMENSIONAL TEXTILES.' is the name of an exhibition by a local workshop being held at the National Theatre until July 11th.

Elephant Jobs Handmade Textile Workshop produces rugs and wall coverings designed in pure new wool. David Stephens designs and supervises work on the products. The workshop is now part of Elephant Jobs 'YOP' training programme which takes on the young unemployed.

The purpose of the exhibition is to demonstrate some key aspects of Elephant Jobs work, and hopefully also to

generate some income from sales of the work.

According to Andy Burton, development manager for EJ, it shows the value of the imaginative use of funding; the need to identify areas of potential long-term employment; and the need for private business, public bodies and employment schemes to collaborate on youth training and securing future employment.

The exhibition is in the foyer to the Lyttelton Theatre circle, and can be seen free 11am to 11pm Monday to Saturday.

REALLY FRANK

WELCOME TO FRANK'S FACT FILE.

'Bungie couldn't find her Cadbury's flake because she had already eaten it. She knew this but she still continued the pretence of wondering where she had put it. Eventually she resigned herself to her flakelessness and nestled back further into the soft pink grass'.

As the credits rolled and I staggered over to the video Sue screamed out.... 'Don't turn it off yet Frank, it's Brideshead on next I recorded it last Sunday'.

I now realised that getting out of that chair was a big mistake. At this altitude all I wanted to do was go to bed and curl up with my favorite facts.... I left Sue to Sebastian and silently climbed the stairs.

* WOMEN MPs: There are currently 23 non-male MPs in the House of Commons, five less than in 1964.

* SUICIDE RATE: In 1980 there were 8.8 self-inflicted deaths per 100,000 people living in England and Wales. The most unhappy people are the Hungarians with a staggering 44.9 suicides per 100,000 population.

* BAKED BEANS ? Britain has the highest per capita consumption of baked beans of any country.

* SELF-EMPLOYED: 9% of the employed labour force are self-employed according to figures for 1981 which puts the total at just over 2 m.

* TRUNTS ? Nearly one in three pupils stayed on at school after the age of 16 in 1981.

* NINE THOUSAND children were adopted in 1981.

* LUNAR RHYTHMS: According to a recent report there is no lunar rhythm to human sexual behaviour. Investigating 78 couples (average age 26) over a 12 month period sexual activity was found to peak at 7am with a major peak at 10pm in the evening. Couples averaged 2.44 copulations per week.

* VEGETABLES ! One third of all vegetables grown by Londoners in their gardens and allotments contain more lead than is allowed in current food regulations.

* HARES make up some 20-30% of a rural fox's diet. The number of British foxes has increased threefold over the last three years. The decline of the British hare can be assessed by looking at hunting records: before 1965 hunters bagged 10 hares per sq. kilometer, by 1980 only five were shot for every sq.km.

* PORRIDGE The average size of an immediate prison sentence for men is ten months.

* THE HOME VIDEO market is in for yet another big upset as several major companies are launching new models this month which run at half speed to double recording and playback time on a standard VHS cassette.

* TOTAL attendances at Football League matches in England and Wales fell from a post-war peak of 41m in 1948-49 to 20m last year.

* SWIMMING is the most popular sport for women.

* DOLPHINS conserve energy by leaping out of the water when travelling at underwater speeds of more than 5.3m/s.

AND NOT MANY PEOPLE KNOW THAT ! SELVA - FRANK.

HAVE YOU GOT A BIT OF SPARE TIME?

'LEND A HELPING HAND'

Would you like to be a volunteer? The range of things which volunteers can do is far wider than you would imagine. Southwark Council for Voluntary Service's Volunteer Bureau was established in 1972, it now recruits over 250 volunteers a year and places them with organisations throughout Southwark.

To help guide people to voluntary opportunities the Volunteer Bureau has produced a new booklet 'Lend a Helping Hand'. The booklet shows that volunteers are needed for every imaginable task: visiting the elderly, working with children or in a hospital, by driving, helping with a community newspaper or in a charity shop. Volunteers may give as little or as much time as they wish.

The booklet is available free from Amy Wallis or Oona Goldsworthy, SCVS volunteer Bureau, 135 Rye Lane, Peckham, SE15



HERE ARE JUST A FEW OF THE THINGS YOU COULD DO... INTERESTED ? THEN CALL AMY WALLIS-732 5729 OR DROP IN TO 135 RYE LANE, SE15 (TUES. WED. THURSDAY. 10.30 - 4.00pm)

IT'S STUART HOLLAND AGAIN!

The constituency Labour Party for the re-defined Vauxhall parliamentary seat has selected Stuart Holland to represent Labour at the next general election.

Presuming he is returned as Member of Parliament, this will mean no change for the Waterloo part of the area - Stuart is sitting MP for the old Vauxhall constituency. Lambeth will now only have 3 seats in the House of Commons, as opposed to the 4 it has had until now.

Lambeth Central disappears as a seat, and parts of it go to the 3 other existing seats. John Tilley is the displaced MP, who was contesting the Labour nomination with Stuart Holland.

BE WISE, ADVERTISE IN "SE1"

Small ads free to SE1 residents! No businesses please - but all your private sales and wants, babysitting, jumble sales etc. Send you small ad, into SE1 at 12 Meymott Street by May 25th.

CELLO LESSONS GIVEN
Ring Thomas on 735 8353

SOLID PINE TABLE & BENCHES
Excellent Condition £50 ono
582-6136

COMPUTER DIALER
Incorporating a Calculator
£50 ono Phone 582-6136

8 Sponsored Walk COIN COURT

St Trinians?

During Lent the girls at St. Saviour's and St. Olave's School collected money for various charities by holding certain activities in and out of school. Some held this Lent were the teacher's singing competition, E.T. look-a-like, throwing wet sponges at the teachers, cake sales, car washing and the 6th form Fancy Dress Sponsored Walk.

Our Sponsored Walk took place on the last full day of term - we asked our friends, relations and teachers to sponsor us, which they did reluctantly after a lot of arm twisting!

That day we came out of the Common Room dressed in various guises. There were many 6th formers dressed up as school-girls from St. Trinian's complete with mini-skirts, stockings and suspenders and old autographed school blouses. One girl went as a baby with a bottle and doll in her hand and wearing a nappy, another girl went as an American footballer with knee and shoulder pads. Another as Hilda Ogden with curlers in her hair and an old dress and apron on and I went as Nora Batty with a ginger wig and scarf, an overall, wrinkled stockings and plimsolls! I also wore a pair of plastic boobs which I exposed often when we were given money and one man offered to measure them for me!

We started off from school in the New Kent Road and headed towards Tower Bridge. We were offered a lot of money from passers-by which we collected in biscuit tins, sweet jars, my shoes and a metal teapot! We also received a lot of toots and stares from motorists.

Once over Tower Bridge, we walked around past the Tower of London shocking many tourists along the way!

The next bridge was London Bridge, then Southwark and Blackfriars Bridges. After that we headed towards London Weekend Television where we stood outside and waved to them inside! We then walked back on to Waterloo Bridge and decided to finish our walk as we were tired and it began to rain. We decided to get a bus back to school and were given a free ride on the bus. We arrived back ten minutes before school ended, as we turned into the school (expecting to see our cowardly friends who didn't come with us!) we were greeted by silence - everyone had gone home half an hour earlier!

After a rest and an hour of trying to remove our make-up, we counted our money that people gave us in the streets to find we had £81.40p - without sponsor money. This goes to show how hard school-girls really work today!

Then we walked along the Embankment to Waterloo Bridge and then into the Strand to McDonald's where we revived ourselves with hamburgers, chips and drinks.

Local people will be appearing at the High Court on May 18th in large numbers. But it won't be them who will be charged with doing anything illegal.

That Wednesday is the date set for the hearing of an application to have the planning permission for Greycoats Coin St. scheme 'quashed'. All three local authorities (Lambeth, GLC, and Southwark) are taking the Secretary of State for the Environment, Tom King, to court to challenge the legality of his decision to give planning permission to their office scheme. Although he gave permission for the local Association of Waterloo Groups' plan (for mainly housing plus light industry) at the same time, this will not be affected by

the High Court decision. In fact, AWG are also challenging the Greycoats permission.

There will be a demonstration outside the High Court at 9am on the day, organised by the Coin Street Action Group. 'SE1' is informed that it will include a puppet show of a giant judge executing a giant Tom King! Everybody is urged to attend, make their voice heard. Meet at the Waterloo Action Centre, 14 Baylis Rd at 8.30am - a coach will take you and placards. Bring your own placards if you can. Refreshments will be available afterwards back at WAC.

Contact Stewart Luck at Waterloo Community Development Group on 633 9291 for more details, and check the WAC window!

SE1 IN SOUTHWARK

Recently a meeting was called of groups and interested individuals in North Southwark to discuss the role of SE1 in that part of the area.

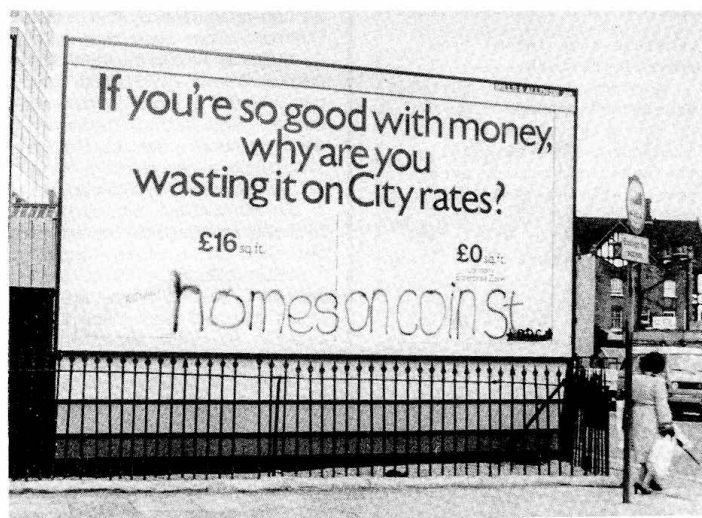
The fact that apart from planning issues little else concerning North Southwark finds its way into the newspaper has for a long time been a cause of concern for the paper.

Those involved in the production of SE1 feel that there are a lot of groups that have been overlooked. There must also be more than a handful of groups that are unaware of the existence of SE1.

There is a lot of work that needs to be done before this situation can be rectified. One way of tackling the problem of involving more groups from the area would be to hand over maybe two or three pages of SE1 to North Southwark. Hopefully this would draw in groups and individuals who have hitherto had no contact with the newspaper. Secondly, it would also concentrate the attention of people in the area, and may increase our sales, which in turn will prompt groups and campaigns into using the newspaper to inform local people.

At the moment these are just ideas that have not been fully thought out. If you have any suggestions, don't hesitate to contact us at 12 Meymott St, SE1, or phone 261 1404 and ask for Paul Ferman.

With a bit of luck we should have some more information and firm proposals in next month's edition of 'SE1'.



join
us

new cycle route
for elephant

The SE1 group warmly invite you to come and take an active part in your local paper.

You can help with SE1 in a wide variety of ways and spend as little or as much time as you please. We gave a list in the March issue of what there is involved. If you would like to know more, get in touch.

Please let us know if you have any information or news which you think might interest other people in SE1. Send us a letter, or article or photo, or drop in at one of our meetings.

Our next issue will appear on June 4th. All contributions must reach us by Wednesday 25th May at 12 Meymott St, SE1. Meetings are on May 11th and 25th.

To contact us, ring John on 928 4748, or leave a message at Waterloo Action Centre (261 1404).

If GLC funds are forthcoming, work should go ahead on the Elephant and Castle to Dulwich Cycle Route. The Housing Committee had to be consulted since the route passes through housing estates. If the plan to use housing estate roads meets with no opposition the route will be more direct and the Council hopes that tenants will be encouraged to use the expanding network of cycle routes in Southwark. Maybe the Council should now give some active encouragement to council tenants by providing areas for bike storage on estates.

Aylesbury Estate - the proposed route enters the estate near the junction of Albany Road and Canal Street adjacent to Arklow House. It passes through Chartridge Court and along Westmoreland Road to Phelp St. 70 metres of the route has to use the access for emergency services and refuse vehicles adjacent to Arklow House. Signs will

be placed to give pedestrians priority.

Heygate Estate - this section of the route begins in Brandon Street and runs along the access way parallel to Heygate Street on the northern side of Kingshill. There will be no conflict with pedestrians since the footways are on the upper levels.

