

SE1

SEPTEMBER '83. 15p MONTHLY.

NUMBER 18.

SCHOOL THREATENED

Holy Trinity Church of England Primary School in Carlisle Lane is under threat of closure. The Board of Governors have recommended that it should close in July 1984, but they will be re-considering this at their meeting on September 15th.

Parents are enraged that this excellent school might close, reducing the range of choice in the area. Three Waterloo schools have already closed in the past 10 years, as the school age population has fallen.

The school governors are reviewing the future of the school because numbers on the roll have fallen. An intake of at least 15 children a year is needed to keep the school 'viable' in staffing and other costs.

The school has been left off the list of those in the area which were available for parents moving into the area, which cannot have helped the

number of children being entered for the school. As the number of young children in Waterloo seems to be on the increase, and more family housing gets built, on the Campbell Buildings site, The Cut and we trust Coin Street, plus odd little bits elsewhere, there should be more kids around to fill the school. Why close now when it may have to be re-opened later?

The Friends of Holy Trinity School are asking for letters to be sent to

John Driver, Chair of the Board of Governors at 47 Walcot Square, SE11 for the September 8th meeting if possible, with copies to Caroline Laing, c/o Friends of Holy Trinity School, Carlisle Lane, SE1. They will be producing a leaflet giving more details soon.

One of the parents writes about the school on page 2 - 'An Unholy Threat to Local School'.



KIDS CREW[↓]

CHARTERHOUSE PLAYScheme 1983

If you have been around the Long Lane area, all ports north south, east and west, over the four weeks of August, you may have bumped into an amazing sight! That is a Guys Hospital trolley, flying not the Jolly Roger but the "Kids Crew" flag, as it trundled off to foreign parts! Maybe not to the South Seas but they did get as far as South Bermondsey!

There were favourable winds and this majestic ship sailed off manned/womaned by a very motley crew of young people wearing red and white "Kids Crew" T-shirts, while the quartermaster and the Cap'n appeared to be two very harassed youth workers.

When they came into harbour, they quickly unloaded their provisions and what followed was some of the most amazing participatory drama (everyone joining in) ever seen in these waters! Characters appeared even more extraordinary than Long John Silver himself!

Silly Billy Big Nose learnt it was bad to be nosy but all right to wear glasses and kids between the ages of 4 & 10 found themselves joining in to help the good witch Griselda and her cat Moonshine, defeat the wicked wizard Zelzahbar.

The following week we travelled to Egypt and with the help of the Mummy found the Golden Ark. In the final week we heard about a planet called Equalatium:

"An equal planet is better for all,

For young and old, big and small.

We don't exploit, we do not fight,

Everyone has equal rights

There are no governments

There are no wars

And everyone shares their chores."

There were some beautiful peace banners made by the kids and then the Warmonger and his underling were eventually banished forever to the swamp.

In the afternoons, the ship sailed back again with arts and crafts materials and kids rushed to make a mask, do a painting or have their face painted or model with clay and other materials. At the end of a long hard day on board, the trolley sailed off into the sunset. Whitegrounds, Kipling, Elim, Vauban, Longfield and Lawson estates will never be the same again, and nor will the crew!

UP & DOWN

Greycoat caught in Court while office market collapses.....

As finishing touches are put to the detailed design brief for stage one of the Association of Waterloo Group's Coin Street scheme, the GLC has agreed proposals for the 8-strong architectural team to carry out its design work from a base in the car park site behind the National Theatre. Proposals to turn part of this Doon Street site into a temporary local park are to be considered by the GLC in September.

CONTINUED ON BACK PAGE

inside!

ADVICE IN SOUTHWARK	page 3
LETTERS	page 3
PLAYING WITH FIRE	page 4
CRACKING UP	Part 4 page 5
BOB'S RECIPE & GINA'S NATURE CURES	page 6
MOVING AWAY	page 7
BREWING A STORM AT ANCHOR ?	page 7
KEIB'S GARDENING	page 6
PARK IN PEACE ?	page 5
AND MORE.....	

the local newspaper!

AN UNHOLY THREAT TO LOCAL

Holy Trinity School is situated in Carlisle Lane, SE1, next to Archbishops Park and opposite St. Thomas' Hospital. There are pre-fabs on the other side to the park, and the busy road by St. Thomas' is invisible from the school, and unbelievably almost inaudible. There is a long lane, village style, to reach the school, and with the overhanging branches of the park trees it is easy to forget that you are in the heart of London, within walking distance of Charing Cross.

The school's atmosphere is tranquil, and as a result the children are placid though lively. There is no sign of violence or rough behaviour and everyone is friendly. No child is afraid to go to school, though of course some of the new 'rising fives' do cry a little for the first few days, but they soon settle down and start enjoying themselves.

When I sent my child to Holy Trinity School, after much thought, I was a bit dubious about the Church of England bit, as we do not practice any religion in the family. I need not have worried, as the religious teaching is at the sort of level of right and wrong. Knowledge about one of the major influences on humanity is imparted to its new little members in a way that I would like to do for my children, were I knowledgeable enough. I do not want my children to grow up without knowing about the various religions, and I hope in the fullness of time they will decide for themselves.

Two things made me sure that Holy Trinity was the right place: 1. My friend's child started a few weeks before mine and I was amazed to see his work - filled up books of writing and figures from the word go.

2. The fact or having a familiar face at school with her, I felt, would make transition from playground to school much easier.

I was right on both counts. Though she cried sometimes, she settled down wonderfully and

HOLES IN THE ROAD -

A SOLUTION

Many readers of SE1 will be aware of the dreadful state of both the road and pavement in Hatfields. Part of the problem is that the road is the boundary between Lambeth and Southwark boroughs.

When Hatch Row Housing Co-operative was being completed, Hatfields and Rouppell Street had to be dug up to put in gas, electricity etc. Lambeth got Rouppell St. back to a reasonable state in a short space of time. Southwark have promised to restore Hatfields as soon as they have finished work in Stamford Street. For the sake of cyclists in SE1 let's hope that's sooner rather than later!



she too started filling up exercise books at a rapid rate and learning fast.

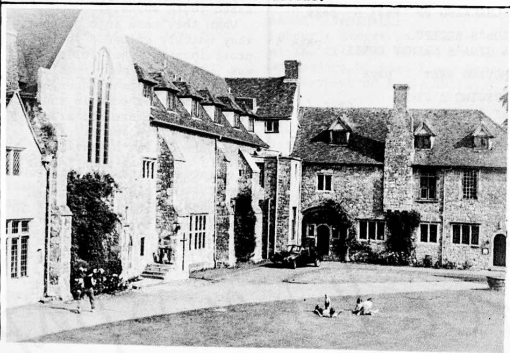
The bonus I had not bargained for was that she would be gaining a wonderful insight into nature as well. She is now teaching me the names of trees and birds, and words like 'hibernate' and 'migrate' abound in her vocabulary.

We acquired a piano from a friend and mentioned to the infant teacher how much we would like our child to learn to play it. Since then, this teacher has been giving her and many others piano lessons in her own time. The children are getting on wonderfully well, and will play for anyone who cares to come and listen.

There have also been guitar and recorder lessons at the school, and the guitar quartet took part in a concert at Kings Acre School. They are the only guitar quartet in a junior school in the whole of London, and who knows, perhaps in the whole country. I have been serenaded by two of them at two Sunday dinners at home and the lovely sound of their playing would match any violin serenade in an expensive restaurant.

The guitar ensemble has been rehearsing over the summer holidays with a view to taking part in a concert at the Barbican in the autumn.

The juniors go swimming and with the exception of one or two, they are all proficient swimmers.



SCHOOL

As the classes are small, sensitive children have been given a chance to blossom. Sadly the school roll is now so low that we are actually threatened with closure in July 1984. The only solution is for more children to come to the school now. We have asked the governors and the Inner London Education Authority (ILEA) to defer the decision until July 1984, so nothing would happen until July 1985 at the earliest. This would give us a chance to show them that we can get more people to send their children to the immediately, and thereby save the school.

It seems a great pity that a unique school on a unique site should close down when the population is going to rise in the 1990s. Not only that, there are various sites, large and small, in the Waterloo area which are designated for family housing to be built there.

I strongly urge all parents with young children to come and see the school. Alas there is no nursery but I have kept my very boisterous boy at home, although I was tempted on numerous occasions to put him in a school with a nursery. He could have been going to school full time for a whole year but I chose to suffer and keep him at home until he could start at Holy Trinity. We can get a nursery, if enough people with children under five show their interest in the school.

Even if you don't have children but think that our school is worth saving, you can help us by contacting the Friends of Holy Trinity School. Sheela Jones

A SIZZLING SUMMER AT B.L.S.

We are having a very busy summer at Blackfriars Literacy Scheme which has resulted in an outbreak of heatbumps and red noses. Students, workers and friends went on a boat to Clacton on June 19th, and then on the 1st to 3rd of July we had a marvelous "writing weekend" in Aylesford Priory in Kent. On both of these dates the weather was great.

When it is hot a Nelson Square, the students sometimes work in the garden, getting more tanned all the time. Later this year the Scheme will present a play at Nelson Square Festival, when the sun is sure to be shining.

We have a third full time worker now and will expand our activities even more, like the July computer workshop and the way we have worked with the Waterloo Employment Project. So if you want to join in the fun and you need help with reading, writing, spelling or maths, or if you want to help then ring 928 9521 or come along to 47 Nelson Square and ask for Charlotte, Caroline or our brand new worker Elaine.

ADVICE IN SOUTHWARK



MICK KRAMER

Mick is new to BAC, but not to this sort of work. His last job was at a Welfare Rights Office. Before that he was unemployed himself, but did voluntary work. Helping to set up an Unemployed Centre on the outskirts of Sheffield. He gained valuable experience here. But Mick was not always involved in this sort of work. He's worked in the steel industry, he has been a bus conductor, a printer, mechanic, and has done some office work.

Mick sees BAC's role as mainly an advice centre helping people with their Benefit and Rights problems, but he thinks it should also help people to understand their rights and how to solve their own problems. He also feels that BAC should campaign to get improvements in the system, not only putting pressure on the Government to increase benefit rates, but also identifying local problems that they can do something about.

ANDREW WATSON

Andrew is also an experienced advice worker. He has worked in a Citizens Rights Office in Edinburgh, a Welfare Rights Centre in Glasgow, a Manchester Law Centre, and he's also done some work for Lewisham Unemployed Action Group. He has worked in a foundry, a plastics factory and

has done gardening. He feels that BAC is there to teach people their rights on housing, immigration and consumer affairs. He would like to campaign to ensure that people know their rights.

Andrew is the BAC detached worker. This means he does two sessions of advice work outside BAC every week. Tuesday afternoons he is at North Lambeth Day Centre and Friday he is at the Borough Community Centre. These sessions are general advice at these sessions. Andrew has worked with Mick on several training sessions with students that are going to be working in the community. Andrew says he was lucky, where he worked before they had a lot of material on training people.

BLACKFRIARS ADVICE CENTRE

BAC are involved with local people's rights and hopes to get further involved in local issues. We want to help people to fight for their rights and to help in the campaign to get them. We are going to have training sessions to teach local people and tenants associations their rights. The workshops will be on benefits, your rights and Southwark's Tenancy Agreement. We want to help people to help the Council get its Tenancy Agreement right from the beginning.

We want a feedback so we know what people want. We can then plan for the right sort of workshops. BAC hope to take advice work a bit further than just saying we are here, we'll solve all your problems. This does not go far enough. We want people to be aware of what their problems are and why they're caused, and what they can do about them. So if you have a problem or you're in doubt about what you should do, then give us a call.

Blackfriars Advice Centre, at 44 Nelson Square (Blackfriars Settlement) is open 10am to noon Tuesdays, 2 to 4 pm Wednesdays, and also runs a session at the Borough Community Centre, 56 Southwark Bridge Road 10am to noon on Fridays.

HOUSING BENEFIT DISASTER

As many residents of SE1 will know, particularly pensioners and the unemployed, the new scheme to pay rent and rates through 'Housing Benefit' instead of by supplementary benefit or rebates, has been a disaster for those claiming it.

Lambeth and Southwark Councils are probably no worse than many others, but what is no comfort for those caught in the trap. Private tenants, including those in Peabody, housing co-ops and other housing associations, perhaps are having the most hassle. With the old system having finished in March, many pensioners are trying to meet their landlords demand for rent from their basic pension, not leaving themselves enough to buy food, gas and electricity.

Lambeth has gone so far as to take a full page advert in the South London Press to apologise, but they don't offer any solution, other than be patient, as it will get sorted out eventually!

The best advice SE1 can give is to go to your local advice agency: Waterloo Action Centre, Blackfriars Advice Centre or Borough Community Centre (see below for times) or contact your local councillor.

Southwark Trade Union Support Unit is putting together a report which will go on to the TUC, who will in turn put pressure on the Government to get the Housing Benefit scheme improved.

ADVICE IN SE1

The 'shopfront' advice sessions at Waterloo Action Centre, 14 Baylis Road, SE1 (near Lower Marsh Market) usually operate Monday to Friday, from 10am to 2pm everyday. Due to staff and volunteer holidays etc. there are no sessions on Wednesdays at least until the end of September.

Free Legal Advice is given 6.30 to 8pm every Thursday at WAC.

HAYS WHARF

On July 1st, Patrick Jenkin, the Secretary of State, dealt a body blow to local people. Without any consultation, he has given permission for 25 million square feet of offices, luxury housing and a private hospital on Hay's Wharf. Absolutely NOTHING for Bermondsey people. But with the massive amounts of empty offices around, it is unlikely that this scheme will be built. How long are these speculators going to be allowed to play 'Monopoly' with our land and our futures?



WATERLOO AMENITIES WISH TO ANNOUNCE THAT THE

STORY OF WATERLOO

WILL BE SHOWN AGAIN AT THE YOUNG VIC (The Cut) FOR THOSE WHO MISSED IT LAST TIME.

FRIDAY 30th SEPTEMBER (Check time beforehand)

TICKETS ON SALE IN ADVANCE AT WATERLOO ACTION CENTRE, 14 Baylis Road, 25p, 10p for Children.

HOPE TO SEE YOU THERE. VOLUNTEERS TO ORGANISE FUTURE SHOWS WELCOME!

NO LOCAL CUTS IN HEALTH SERVICE

There is a special public meeting to discuss the proposals from West Lambeth Health District (which includes St. Thomas') which would reduce the number of beds available at St. Thomas in some areas. There would be other changes in the services provided to SE1 residents.

If you want to go, a minibus will leave Waterloo Action Centre to go to the meeting at Lambeth Town Hall, on Wednesday September 28th. Contact the Waterloo Health Project on 633 0852 for further details, or call in at Waterloo Action Centre.

Letters

AN OPEN LETTER TO

KEN LIVINGSTONE

Dear Mr Livingstone,

We have become aware that while there are committees within the GLC for every group of people one can imagine, there is not a representative committee for the pensioners of Greater London. This seems a grave omission and we would like to see such a representation formed as soon as possible.

We suggest that the GLC calls a public meeting to be circulated to all pensioners' groups, from which a committee could be elected. This would enable us to have a strong voice in the growing concern regarding the proposed dissolution of the present GLC, particularly where pensioners' rights are concerned.

We feel that our proposal warrants your prompt attention.

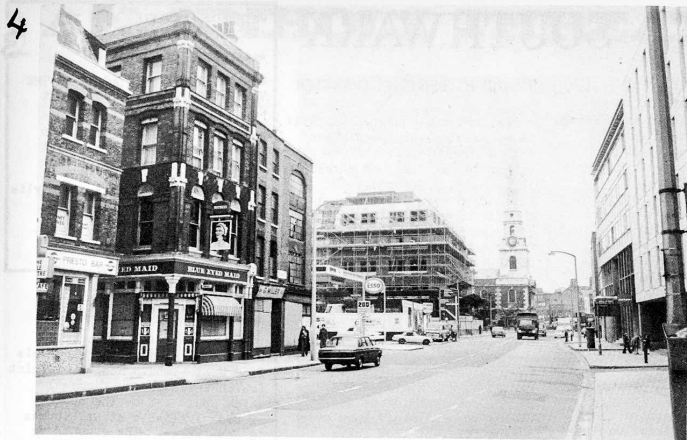
Odette Lesley, secretary of NORSPAG (North Southwark Pensioners Action Group)

DEAR SE1

Ivy Garner retired in June after ten years at the OLD KINGS HEAD in Blackfriars Road, SE1. Ivy used to help with all sorts of charitable activities such as the Waterloo Festivals etc. Ivy also did a lot of work for the pensioners by way of summer outings to the hop fields, and Christmas parties.

Good wishes for a long and happy retirement, Ivy!

Alan Drew



PLAYING WITH FIRE

Tuesday is bingo night in the large hall behind Spa Road Library and its a full house as well. The sound of numbers being called in the tense, smokey hall can be heard in a room upstairs where a small group of anti-nuclear campaigners are planning their strategy. The atmosphere is informal but with a certain urgency. Talk is of coming demonstrations, a peace stall at some festival and, as ever, gaining local support.

It's ironic that below, 150 or so citizens are eyes down, striking numbers from a board in an attempt to win a prize while here a handful of concerned individuals are striving to help put an end to the nuclear arms race which threatens us all. The bingo players may be aware of the danger of nuclear war, but poised on the edge of their seats waiting for that last number to be called, and indeed in everyday life, the threat seems strangely unreal.

The apathy is perhaps understandable in an area that suffered badly during the last War and has not seen a single bomb drop since: the nuclear deterrent has worked so far, why shouldn't it continue to do so? What is forgotten is that the next war will last not five years but five minutes, during which time the equivalent of all the bombs dropped during the Second World War will fall on London. Everyone will die, the lucky ones immediately. It's not so much that people are not aware of the nuclear threat but more that the whole idea is so horrible and the figures so mind boggling that they prefer to forget about it.

Another factor is that most people in SE1 as in the rest of the country are willing to surrender their power into the hands of a Member of Parliament, elected every five years, who is supposed to represent them. Such is democracy. Simon Hughes, MP for Bermondsey and Southwark has never discussed the issues

with the local group, despite several requests. He is no doubt aware of the issues and probably sympathises with the disarmers sentiments. But following Liberal Party lines, he would argue that some nuclear weapons are a necessary evil.

Just as the people of any suburb of Moscow are told by their local Communist Party official that there are enemies who would attack were it not for their nuclear deterrent, so it is with us. The difference is of course that those people have no choice while we, in theory at least, do. While Mr Hughes may be very concerned with seeing that repairs are carried out on council properties when ordered, he does not represent the people effectively when it comes to averting the long-term threat of those council properties being destroyed by a nuclear holocaust.

UNEMPLOYED?

Interested in making videos? Cowley Recreational Institute are running a video film making project for the young unemployed. Contact Jim, Debbie, Jamie or Penny at the Beaufoy Youth Wing, phone 735 9461 for further details quickly; its on this month!

There are at least 200 members of national CND who live in the Bermondsey area, but only a handful of these are actually active in the local organisation. 'Active' usually means that a couple of hours a week are spent at meetings or distributing leaflets.

The meetings are held every other Tuesday but most of the discussion seems to take place in the pub afterwards. A way of hearing some of the issues is to come along to one of the educational meetings listed below, at the Small Hall, Spa Road District Library, SE16, at 8pm:

SEPTEMBER 6th: EUROPEAN AND AMERICAN PEACE MOVEMENTS Speaker Dave Mussen. How strong are they? How do their ideas differ from British CND? What links are there, or could there be?

SEPTEMBER 20th: CIVIL DISOBEDIENCE AND DIRECT ACTION Speaker Andrew Dwyer. Andrew will examine these tactics. What do people hope to get out of them? What beliefs lie behind them? Will they succeed in getting rid of nuclear weapons?

Educational meetings will continue throughout the rest of the year. Anyone is welcome to come along. If you are interested in further details or joining, Bermondsey CND, contact Paul on 237 9770.

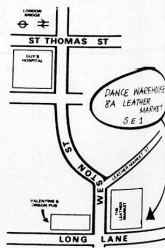
SLIM LINE TONIC

PROFESSIONALLY TAUGHT KEEP FIT
DANCE CLASSES
(FOR EVERYONE)

DANCE WAREHOUSE

PROFESSIONAL DANCE REHEARSAL STUDIO.
HARLEQUIN STAGE FLOORING -
JVC SOUND SYSTEM - 1,000
SQUARE FEET OPEN AREA -
FREE PARKING - FREE VENDING
MACHINE - OPEN SEVEN DAYS
A WEEK.

RING 01-403 1300 FOR FURTHER
DETAILS AND BOOKINGS.



CLASS TIMES
MON TO FRI
6.45 to 8.00pm
8.15 to 9.30pm

ENQUIRIES
Tel 01-403 1300
01-403 4441

Tanswell Mums & Toddlers Group.

Tanswell Mother and Toddler Group has been flourishing for over three years now. It was started by a group of local mothers who, with the aid of a community worker, found premises (a one-bedroomed flat on Tanswell Estate) and applied to Inner City Partnership for funding to convert it, making it safe and secure for small children.

While the conversion work was in progress, they then successfully applied for money to pay a worker for the project and running costs to cover the day to day expenses.

Since then it has gone from strength to strength and is now a firm part of the community. Many mothers have gained from the friendly, easy going atmosphere which offers help, support and friendship for mothers and a safe play place for under 5s. Unfortunately this project is now under threat as in March 1984 the funding expires, and at present there is no other source of funding which has been found.

Some of the mothers have recently been involved in making a tape/slide show which will have it's first showing at the groups AGM in October. They have set out to show the history and progress of the group until now and their hopes for it's future - IF money can be found to continue.

There will be further details of the AGM in the next issue of SE1, and we hope you will all come along and give your support.

AN ICE DAY OUT

The 'Helen Barlow' Club (for pensioners) is held every Tuesday at the Waterloo Action Centre, and the secretary is Barbara East, assisted by Winnie Clegg. On the 28th June they took their members to visit the Chalfont Womens Institute who cooked and served a delicious meal & put on a musical concert for them. After this they boarded their coach and were driven to visit a large and beautiful house and garden at the invitation of the owners who served everyone with ice cream. It was a most relaxing day.

Then we were driven back to the W.I. where we were served tea. On leaving we were all presented with a small gift plant, a packet of tea and we bade them farewell. This has been a regular visit for a great many years now, and we wish all the members of the W.I. well, and hope that visit may continue for many years to come.

Unfortunately the club has run out of funds, so if anyone can possibly help then I'm sure it would be greatly appreciated. Any ideas for raising money will be welcome.

A Member

CRACKING UP IN SOUTHWARK.

BY THE NORTH SOUTHWARK PENSIONERS ACTION GROUP (NORSPAG)

CRACKING UP PART 4

NORSPAG held a meeting on July 28th regarding the lack of action being taken on the issue of pavement parking. They invited representatives from Borough Police Station, the traffic wardens, Southwark Council politicians and Engineers. These people were invited to answer our questions on why this dangerous practice is being allowed to continue unchecked. We wanted to know exactly where the law stood in this issue, and whose responsibility it is to keep our pavements clear and undamaged, for the use of pedestrians.

The view taken by the police is that with present laws they cannot prosecute pavement parkers, unless they can prove obstruction, or receive a complaint from a pedestrian, preferably with a photograph, and who would be willing to go to court if necessary. Alternatively, the police would have to personally witness the offence. The police rep. stressed that the police would be only too willing to prosecute if the laws on the statute book (1972 section) Highways were invoked giving them far wider powers.

Alan Davis, council leader, agreed that the law should be enforced, if brought into play, but meanwhile, how could action be taken? He suggested several temporary solutions, none of which were practical.

Regarding the Borough Engineers one fact came out of the meeting: that a member of NORSPAG had written several times to the Council complaining of a lorry parked on the pavement, causing broken paving stones. He had had no response whatsoever, and no explanation was given for this lack of interest.

A further complaint was voiced regarding lorries parked in Lant Street, but drew no response. In fact the Borough

Engineers could offer no positive action at all.

The traffic wardens representative said that their powers were limited, but agreed that where yellow lines exist, a vehicle parked on the pavement can be ticketed, but we pointed out that this was not being done. An example from the chairperson was that she had asked a warden to put a ticket on a car parked right across the pavement and had been so parked for quite some time. Not only was the request refused, but the warden was most rude. Norpag was told that any complaints received in writing, giving the wardens number, were always investigated.



To sum up, the law is shown to be an ass! There is legislation on the statute book, both in local and central government, but no-one will invoke it. Every department concerned is waiting for the GLC to give them a lead in taking positive action.

It is only fair to state that since the meeting, we have had several reports from our members of increased vigilance by both the police and traffic wardens in North Southwark, and a request from the Council for a

list of the worst affected streets, with a view to erecting pavement bollards.

Further to this, after much searching of the South London Press we discovered a minute article stating that the GLC is proposing to prosecute all pavement parkers, with a suggested fine of £26. A statement that has such far reaching effects to vehicle users and more importantly, pedestrians, is surely worthy of at least a whole page spread, rather than the few lines it got, buried at the bottom of a page, surely missed by most readers.

We wait to see how and when the GLCs proposed action starts, with the hope that far more publicity will be given to their findings.

CLAIMING COMPENSATION

If you fall over because of a faulty pavement you can claim compensation. The local council is legally liable for badly maintained pavements. If the difference in pavement levels

is over an inch you have a good case, but if it is under half an inch it is probably not worth claiming. In between, it is arguable. You can claim for personal injury, loss of earning due to being incapacitated, damage to clothing and loss of amenity. It is important to keep a record of all expenses resulting from the accident. For help in making a claim, contact your local advice centre, or Norpag on 928 6476.

PARK IN PEACE?

Many people in Waterloo will be aware of a problem which seems to get worse every year. This is residents parking permits and the number if actual residents parking spaces available. Residents in Edward Henry House Co-operative have been especially concerned about this.

The number of residents parking spaces available in the Coin Street/Cornwall Road area is far too small for the number of permits issued by Lambeth. The result is that many people with parking permits are unable

to find spaces in residents parking zones in the area. This leaves residents open to the ever vigilant traffic wardens to do their worst. One resident claims a record of 26 tickets - anybody want to top this?

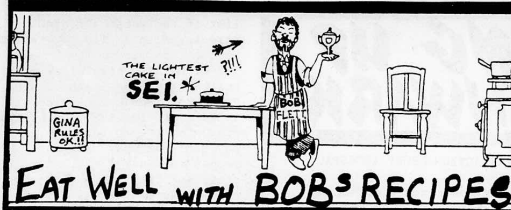
To improve the position, Edward Henry residents have sent a petition to Pat Newman, the chair of Lambeth's Public Services Committee, asking that the number of residents parking spaces in SE1 be increased. As well as the Coin Street area, which is affected by being close

to the South Bank Arts Complex, when the Old Vic re-opens more problems will be created for people in Webber Street and Gray Street etc.

Very few households in Waterloo have garages, and so residents have to park on the streets. As more people choose to stay in Waterloo, the need to provide for cars of residents will increase. What are the views of SE1 readers on this important issue?

(The typist replies: get a bike!)





BREAD PUDDING

Ingredients:

- 1lb stale white bread
- 3oz currants
- 3oz sultanas
- 2oz stoned raisins
- 3oz shredded suet
- ½ level teaspoon salt
- 2oz chopped mixed peel
- 1 level tsp ground cinnamon
- ½ level tsp ground nutmeg
- 3oz soft brown sugar
- 1 large egg
- 2 tablespoons milk

HOLY TRINITY INSTITUTE

Readers of the last issue of SEI will be aware that the Holy Trinity Institute building in Royal Street is presently the focus of much attention.

The Trustees of the Holy Trinity Church decided that they could no longer afford the cost of maintaining the building, and through the Charity Commissioners put the building up for sale. Local people were concerned that the land should be used as an extension to Archbishops Park - this had already been intended as its future use.

Several bids were received for the building which is in an extremely poor state of repair. The bids included use as a wine bar and luxury housing for MPs - hardly pressing needs in Waterloo. Local people, through the Waterloo Community Development Group, had persuaded the GLC to make a bid for the land to become the park extension.

The present position is that although the GLC bid was not the highest, the others turned out to be speculative. Once it was clear that Lambeth would not allow planning permission to change the use of the land, the other bidders have been unwilling to go ahead with their proposed bids.

Although the position is still not clear, it now appears possible that the GLC bid will be accepted by the Trustees, as long as the GLC is kept up to pursuing this line.

If this goes ahead, it will provide much needed open space in Waterloo. This would show the power of local people for achieving their aims in the face of speculators and those in pursuit of a quick profit out of Waterloo.

It will also provide the Trustees of the Holy Trinity Church with a much larger amount of money than they ever hoped from the sale of the Institute building. Maybe they could spend some of this on improvements to the Holy Trinity School next door? (see front page)

Gina Flett

Method

Weigh the bread after removing crusts. Tear bread into small pieces. Put into bowl and cover with 1 pint cold water, leave to soak for 40 minutes. Wash the fruit and drain well. Squeeze the bread very dry and put into a clean bowl. Add rest of ingredients and mix well. Put into a greased 8 inch square cake tin. Smooth the top. Cook for 2 to 2½ hours or until the top is crisp and brown, in the centre of an oven preheated to 375°F or Gas Mark 5. Leave in tin until cold. (I always find this very difficult as it smells delicious) Turn out, cut into squares and sprinkle with caster sugar.

Nature Cures.

If you tried any of the remedies in the last issue which were all garlic-based, I hope they were helpful and that in repelling insects, you have managed to keep a few friends! This time I am suggesting cures that are not quite so drastic!

Firstly, HICCUGHS: these can be unpleasant, especially if prolonged, and also embarrassing as they always occur at the wrong time. Nobody is absolutely sure what produces this spasmodic stricture of the diaphragm. Muscular or nervous tension could be one explanation, local irritation another. Myself, I find that a particular type of very strong pain killer gives me several attacks each day.

For cures, try any of the following:

- the juice of half an orange
- baby's gripe water
- a teaspoon of fresh squeezed lemon juice
- teaspoonful doses of onion juice. Grate it finely then crush through a wire sieve or a garlic press.
- chew a leaf of fresh Tarragon or Mint of you have either.
- a couple of Vegetable Charcoal Tablets swallowed with half a glass of water.
- 15 of Potter's Antispasmodic Drops.

There are other 'mechanical' cures, the most famous being to drink from the other side of a glass. Alternatively stretch your arms above your head while someone gives you sips of water. But the best I have come across yet is to employ the services of someone to hold a glass of water, then dip both index fingers in the water, plug your ears with your fingers while the other person pours the water down your throat. Effective? Yes! I've never known it to fail in our family yet!

It's more than a laundrette.

Standard washing machines • boil wash machines
sinks for hand-washing • airing racks • hand irons
rotary presses • spin dryers
tumble dryers

Complete wash, dry and iron for 25lbs of washing.

only £1.20

Special low price for OAPs on Mondays, Tuesdays and Wednesdays before 3pm.

Lambeth Walk Laundry
in Lambeth Walk near Lambeth Road.
Mondays, Tuesdays and Wednesdays: 8.30am-4.45pm
Thursdays: 9am-4.45pm Saturdays: 8am-4.45pm

GARDENING

WITH KEIB THOMAS

SPRING BULBS.

On sale now are - scillas, Daffodils, snowdrops, crocus, Tulips, Anemones, Hyacinths. Plant them now in pots or windowboxes for early flowers in the spring.

CACTUS GARDEN.

Cactus and succulents come in all shapes and sizes. They are evergreen and decorative throughout the winter! Happy and trouble-free on any sunny window sill.



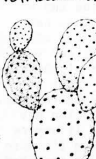
Daffodil



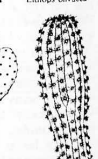
Mammillaria bombycina



Echeveria derenbergii



Opuntia microdasys rufida



Trichocereus spathulatus

Morley College
21 Westminster Bridge Road
London SE1 7HT
Telephone 01-928 8501

Principal Barry Tili

COURSES AVAILABLE IN

Painting, Drawing, Dress Making, Playing the Guitar Introduction to counselling, Fresh Start, Pottery Local History, Dance and Movement.

Health in retirement, Literacy classes, Running a successful workers' co-op, dance and movement

again, learn a foreign language, Yoga, Quilt-making, Garden Design, Creative Writing, Arabic, French, Japanese, Can't Sing Choir, Playgroup Leaders Course

If your group wants to do a course not in the Prospectus, why not write to the Community Education Project at Morley?



Make a FRESH START this SEPTEMBER.....JOIN one of our classes. Look out for our new prospectus, we are posting one to every household in our 'patch'.



Crèches and Playgroup

The Crèches and Playgroup are held in purpose built accommodation in the new community building in Rona Edward Walk.

Moving Away From Ones Roots !

Have you got a family that started off in SE1 and spread out to the suburbs and the provinces after the War? My family did that. I don't know if they were driven out or if they really wanted to leave. Why do so many people leave inner London? Many are looking for homes, jobs and schools but some feel they need peace and quiet most of all.

Here is what my brother wrote when I asked him about moving:

"In May 1979 we were living in a tied caretakers house belonging to Greenwoods, an old building firm in Maltby St, SE1. We had two small children who were getting near school age and we were not all that impressed by the local schools. The classes were large and there seemed to be a large staff turnover."

The house we were living in was very cold and damp and the children's health began to suffer. They always seemed to have colds and coughs. I was on a very low wage, we were always broke and could never afford a car or a holiday. Also we were only too aware that the slump in industry was really beginning to bite.

In our street alone, Aygee Glass closed, Metal Box cut its workforce and Greenwoods closed shortly after we moved. So all in all we couldn't see much of a future for us there. I was offered a job as a caretaker for a charity caring for handicapped teenagers in a rich area of Surrey. We have been here for four years now. The pay isn't a lot more but we have got an old car now after a lot of saving.

We have had quite a few arguments with our bosses, its

not nice living at your job because you never feel that your time is your own, especially if its a tied cottage.

Of course there are pros and cons with living anywhere. Bus services are bad in Surrey, we have no handy shops and the children have quite a walk to school but on the other hand we are in fairly open countryside with lovely views and lots of room for the children to play. The school our boys attend is small and friendly, the staff stay for years so they get to know the kids really well and they seem to offer more in the way of activities and trips than London schools.

Local attitudes are different though. Planning permission for a chip shop was refused because residents thought it would bring their property values down and they didn't want youngsters hanging around the High Street!

Over all we both think that it was worth moving away from London. We had both lived there all our lives. There have been a fair number of problems and not everything in the garden is lovely, but we wouldn't move back now. We miss the people and the atmosphere but there was no future there for us and certainly none for our kids."

I think my brother's conclusion is a bit pessimistic: we do need better schools and services and more homes and jobs but I feel the future lies in fighting for them. Lets face it, most of us have nowhere else to go anyway.

Ray Kingsbury.

ANCHOR BREWERY SITE PROPOSALS.

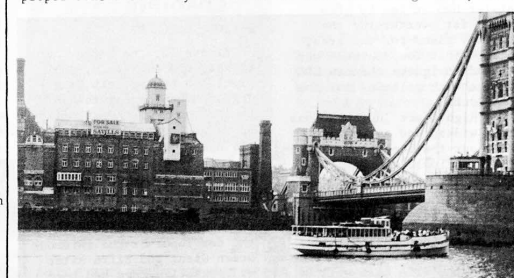
Up until a few years ago, the Anchor (Courages) Brewery on Horsleydown, next to Tower Bridge, used to provide employment for many Bermondsey people. That ended in 1981 when the Brewery was closed.

WHAT SHOULD HAPPEN TO THE SITE?

You would think that it would make sense to modernise the buildings and develop the site for industry to create jobs for local people in need of work. That is what local people have argued for over the years, and that is what Southwark Council propose for the site in the new North Southwark District Plan. Unfortunately for local people, the site lies within the area controlled by the London Dockland Development Corporation whose unelected board has different ideas.

Having just got the Secretary of State at the government's Department of Environment to grant planning permission for 2½ million square feet of offices plus luxury housing on Hays Wharf, the LDDC is now considering an application to develop the Anchor Brewery site. Again the application is for more offices, luxury housing, restaurants and tourist shops. They are actually considering knocking down modern industrial buildings and converting the older ones into expensive 'trendy' flats or offices. How immoral can the LDDC get? One in every four of the workforce in North Southwark are out of work. This site is needed to provide jobs for local people, not a playground for the rich.

As usual, there has been no proper consultation by the LDDC. If you would like further information please contact NSDCG on 928 0711, or call in at 56 Southwark Bridge Road, SE1.



Stunning News

Welcome to Southwark Trade Union News (STUN) and its first pilot issue which came out in August.

Its been produced to fill the gap left by the Tory dominated media in its coverage of local and national union and labour movement events and issues.

This first issue gives much interesting information on employers and employment in the Bermondsey area.

Contact the Trade Union Support Unit, 42 Braganza St, London, SE17, phone 582 8555 for details of how to get hold of your copy of STUN.

WATERLOO EMPLOYMENT PROJECT.

Waterloo Employment Project are giving advance notice of their AGM on October 20th so that local groups and individuals can affiliate in time to have a vote. You will just have a few days if you buy SE1 as soon as it comes out to affiliate: forms have to be in by September 8th.

Only affiliated members will be able to stand for the management committee of the project, or vote for it.

Contact Steph Blackwell or Elizabeth Smith at WEP, Colombo St Community Centre, SE1 (phone 928 8024) for more details.

CONTINUED FROM FRONT PAGE

Stage one of AWG's development will include mainly family housing on the car park behind London Weekend Television and a mixed shopping, flats and light industry development on the other car park. A joint Lambeth, Southwark, GLC and AWG committee chaired by Councillor George Nicholson is finalising the detailed design brief for these two sites. This brief will then be translated into detailed plans by a team of architects working in a Design and Community Centre on the Doon Street site.

Members of the public will be able to walk into the centre, see an exhibition about Coin Street, including the latest design work, and feed in their own comments to the architects.

In September the GLC will be considering proposals to turn part of the Doon Street into a temporary local park. Plans include planting trees, grass and flowers, and setting out benches for the people using the park. The plans have been drawn up so that much of the landscaping can be retained in the 'Theatre Square' which is included in AWG's development proposals for this site.

GREYCOAT

GREYCOAT TAKEN TO APPEAL COURT

On July 29th a High Court judge ruled that the Secretary of State was entitled to have his own policy for Coin Street and did not have to consider whether or not there was any need for more offices. He dismissed arguments that the Minister had in law to give reasons for overturning the statutory plans for the area, and said that the Minister was entitled to ignore the new GLC and Southwark policies for the South Bank.

The High Court judgement has caused widespread astonishment throughout the legal and planning professions. Three independent Barristers were consulted and all recommended taking the case to the Court of Appeal. As a result, the GLC Lambeth and Southwark Councils and the AWG lodged appeals on August 24th. The case will be heard by three judges in the autumn.

(For those who didn't see our June issue, AWG, GLC, Lambeth and Southwark were arguing that the permission given to the Greycoat scheme for offices on the Coin Street sites, by the Secretary of State, should be overturned. This was dismissed by the High Court judge.)



ANNUAL GENERAL MEETING

at

TEENAGE INFORMATION NETWORK

102 Harper Road SE1

Tel 403 2444

Monday 26th September 6.00pm

GUEST SPEAKER: HARRIET HARMAN MP

**** refreshments ****

SHORTS

HOSTEL MEETING

The second of two open meetings arranged by the Greater London Council on the proposed Hostel for single homeless people will be held on September 8th at the London Nautical School, Stamford Street, 7.30pm.

The idea is for a small specialised hostel at 73/75 Stamford Street which will be one step up for people sleeping rough, before moving on to more permanent accommodation.

AMUSEMENT ARCADE, LOWER MARSH

SE1 reported in April that local residents had lost the fight against permission for an amusement arcade in Lower Marsh (No. 47, which used to be a tailors).

Lambeth Council then refused to grant a gaming licence. But the arcade developers have won a court case which has now overturned Lambeth's refusal. Presumably this is why the 'bar.gain' clothes shop has packed up business so quickly after moving into no.47. Apart from a few shop modifications, there is nothing to stop the arcade going ahead and make money out of gullible people!



Speculate and desolate

OFFICES COLLAPSE

Meanwhile, the market for offices has collapsed, as predicted by the Coin Street Action Group during the 1979 public inquiry. Empty office space has reached record levels. The number of undeveloped sites with office permission but unable to attract development finance or prospective tenants is also at record levels, and in August it was announced that the developer for the infamous Green Giant and Effra sites by Vauxhall Bridge had been forced into liquidation before doing any work on them.

A statement from the Campaign for Homes in Central London (CHICL), a federation of community groups including AWG and the North Southwark Community Development Group, said: "Despite the deployment of every 'speed-up development' gimmick, the developer for the Vauxhall Bridgefoot sites has gone into liquidation, and the sites remain derelict."

"The Vauxhall site was the test-bed for the Government's planning policies. It was the first site to be put on the market by the Government, the first to have one of Mr. Heseltine's architectural competitions, the first commercial development to bypass normal planning procedures

through the use of the dictatorial Special Development Order, and now Arunbridge has become the first Thameside property speculator to go bust."

"The liquidation of this property speculator exposes the bankruptcy of Government planning policies. Most of the South Bank lies derelict because of Government-backed office speculators. The Government has ignored the needs of local communities and ridden roughshod over elected local authorities: the result is bankruptcy and blight."

OUTING

As a break from the campaign trail, another of the famous Coin Street group outings has been arranged for Sunday September 11th. Its going to Leeds Castle, in Kent, which is renowned for its park and gardens, peacocks and other animals, and its castle and moat.

You need to book your place in advance, so the right size coach can be hired. Its £4 which includes transport and entry to the Castle grounds, £2 for children and unwaged. Contact Waterloo Community Development Group at Colombo St Centre, SE1 for bookings or further details (ring 633 9291)

A fun day in the country for everyone, especially Coin Street sympathisers and workers.

NEW HOUSING ON STAMFORD STREET

Local tenants groups and the Association of Waterloo Groups have agreed to a suggestion that Edward Henry House Co-operative should try to develop the empty site on the corner of Coin St. and Stamford St.

The idea came up when this site, no 93 Stamford St, appeared on the list of sites the GLC wants to sell.

It is only a small piece of land, and as it is right next to the Co-op's Coin Street block, it seemed sensible for them to develop it for family housing. Now Edward Henry will investigate the possibilities of getting funding for the development, through the Society for Co-operative Dwellings.

ALLOTMENTS GROW INTO HOUSING

Now is your chance to make your views known on proposals for housing on the 'Cut Site' - currently the allotments by the bus garage.

A meeting is being held on 14th September at Waterloo Action Centre, 14 Baylis Road, probably starting at 7pm to discuss plans. Nothing definite has been decided yet apart from checking the possibilities of funding, which are good.

Look out for leaflets which will be circulated soon to homes near the site, or check at WAC.

join us

SE1 is a community newspaper run entirely by volunteers. It is here to provide you with what you want from a local newspaper. So get in touch if you have anything to report, a news item from a group you are involved with, or have something you want to sell locally.

The SE1 group also warmly invites you to come and take an active part in your local paper. You can help in a wide variety of ways, spending as little or as much time as you want. No special skills are required most of the time, and what there is can be learnt easily. If you would like to know more, get in touch, or see our March issue.

Our October issue will appear on October 8th, and all article ads, etc must reach us by Sept 28th at 12 Meymott Street, SE1. Meetings are on September 14th and 28th.

You can contact us by leaving a message at Waterloo Action Centre (261 1404), ring John on 928 4748 evenings or in North Southwark, via Martin Whiteside at NSCDG (928 0711).