

SEI

NUMBER 22 15p MONTHLY. FEBRUARY '84

inside!

INTO ACTION ? Page 4

GARDENING Page 6

YOUR LETTERS Page 2

DROPPING A BRICK(LAYER) Page 7

ST.OLAVES, GUYS, AND ST. THOMAS
HOSPITALS - ALL UNDER THREAT
Page 3

BAD BUY FROM SAINSBURYS Back Page

S.O.S.★S.E.I.★S.O.S.

This issue of SEI is one week late due to pressure of work on too few volunteers in the SEI newspaper group.

If you are interested in joining us, no previous experience is needed - you can learn all you need to know by working with one of our experienced volunteers on the job. At the moment we really need one or two people who could help us type up each issue. This is always done on the last Saturday of each month in the SEI office (or at home during the last week if you have your own electric typewriter). We also have room for one or two people to help us lay out and paste up each issue ready to be taken to the printer. This is done on the last Sunday of every month. Other ways in which you may be interested in helping us are with distribution or in collecting articles or other contributions in the SEI communities.

We are a small (TOO SMALL!) friendly and informal group of volunteers where taking an

interest and sharing in all the tasks is encouraged, but where each person is free to decide how much time they can afford to give to helping on the newspaper. If you are interested and would like to know more about us, please come to our next evening meeting (7.30pm February 22nd) at 12 Meymott Street, SE1 (off Blackfriars Road). Or telephone John Howes via Waterloo Action Centre (261 1404) or 928 4748 evenings, Martin Whiteside at North Southwark Community Development Group on 928 0711 or Keib Thomas at Community Education Project, Morley College (928 8501). We look forward to hearing from you.

We need you and your help and interest will be most welcome!

DEADLINE FOR MARCH ISSUE.....
is February 22nd. The issue
SHOULD appear on March 5th.

VOLUNTEERS NEEDED.

The local newspaper!



PENNY FOR GUYS?

The Guy's Hospital Nurses Action Group organised a 'day of mourning' to mark the closure of 5 wards in Hunts House, Guys Hospital on January 6th. The theme was "Guys is sick, 5 wards are dead".

Michael Meacher, opposition spokesman for Health, Harriet Harman, Labour M.P. for Peckham and the venerable Wilred Wood, Archdeacon of Southwark joined the nurses, other hospital workers and local people laying wreaths and tying a black ribbon around Hunts House.

Michael Meacher addressed the protestors emphasising the Labour Parties commitment

to the N.H.S. The Conservative Party he said were not committed to the N.H.S., Mrs Thatcher when she needed treatment of course went private. The cuts, he said, have absolutely nothing to do with inefficiency in the Health Service, it is basically a question of Government priorities. This year the Government is cutting £140 million from the Health Service while starting to spend £10. billion on the Trident nuclear submarine.

This government has proved that the HEALTH SERVICE IS NOT SAFE IN THEIR HANDS.

POPPING IN

We'd like to say thanks to the G.L.C. and congratulations to N.O.R.S.P.A.G. - the North Southwark Pensioners Action Group, on being awarded a grant of £5000 to open a Pop-in at Borough Community Centre. The Pop-in will cater for the over 55s, providing hot snacks, daily papers, T.V. and video, and information and advice about issues affecting pensioners. They hope to open in April but keep looking in S.E.I. for further news.

We are currently having the building re-wired and the top

floor redecorated. We hope to have the work completed by March and we're looking for ideas for upstairs. What uses would you like to see the rooms upstairs put to? Perhaps you're interested in forming a photography club or maybe you want to start up an unemployment group, you might be interested in women's issues. If you have any ideas or plans contact Shirley or Linda at Borough Community Centre, 56 Southwark Bridge Road, S.E.1. Tel. 928 -6476.

2 STAMFORD STREET HOSTEL

It now seems certain that the proposed hostel for 73-75 Stamford Street will go ahead. The G.L.C. agreed to the scheme in September and approached Lambeth who owned the whole terrace, to purchase 73-75 Stamford Street. The local ward Labour Party aware of the considerable reservations of local residents asked Lambeth not to sell to the G.L.C. unless certain guarantees were given. These guarantees were very much in line with the views expressed at the two public meetings and the Association of Waterloo Groups meetings. They include:

1. A review meeting one year after the hostel has opened, to assess its progress and the effect on the local area. The possibility to exist of the hostel closing or changing use if it is not working properly.

2. Local people to be involved in the selection of the management of the hostel and in its operations.

3. None of the other houses in Stamford Street to loose any part of their gardens.

The G.L.C. have now indicated their willingness to accept these guarantees and have included the need to gain local support into the job description of the Director for the Project.

Anyone who attended the two public meetings would appreciate that the whole idea of a hostel was unpopular particularly when the rest of the homes in Stamford Street are increasingly neglected. However local people now have an opportunity to ensure that the hostel works well and causes no disturbance to its neighbours. Anyone interested in being on the Management Committee for the hostel when it opens should contact Waterloo Action Centre, 14 Baylis Road, S.E.1. Tel.No. 261-1404.

The likeliest date for the hostel now looks like late 1984 or early 1985.

LABOUR

working for you locally...

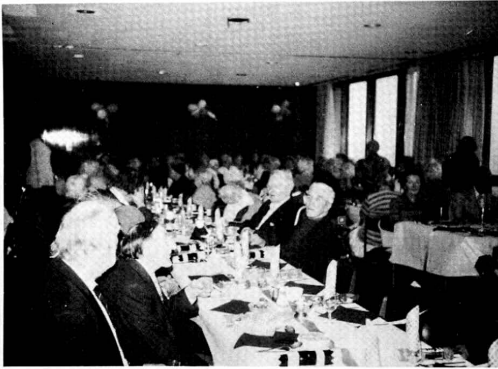
TERRY RICH, your LABOUR councillor

on Lambeth council

holds his surgery

EVERY THURSDAY EVENING 6.45-7.30
at China Walk Tenants Hall,
Lambeth Walk, SE1

BERMONDSEY PEOPLE CARE



Letters letters letters

Dear S.E.1.

January 16-21st was "Save the G.L.C." and ILEA week at Morley College. Every one of the 500 or so classes was visited by a student or staff member to explain the effect that the abolition of the GLC & ILEA, and the 'capping' of the rates might have on the quality of life in London and on Adult Education in Morley College with its 10,000 students in particular.

The ILEA is generous to adult education but because adult education is not a statutory duty on an education authority the compound effects of the abolition of the ILEA and the capping of the rates could be disastrous to a place like Morley. All parties in the GLC and ILEA including the Conservatives - for the retention of GLC/ILEA and many conservatives in parliament and local authorities are very unhappy about the effect on local democracy through the Rate Capping Bill. No one knows exactly how 'capping' would be applied, but it would hit the 'high spenders' and the high spenders in the inner cities with special problems - and the ILEA.

Morley students were asked to sign a petition against the break-up and nearly 3,500 did so. They were also asked to write to their M.P.s protesting - and many hundreds have, and some have also lobbied. Finally there was a goodly Morley contingent with its banner in the big march on Tuesday 24th January.

Barry Till
Principal - Morley College.

Dear SE1,

Morley College is planning an exhibition on HOME LIFE IN NORTH LAMBETH AND NORTH SOUTHWARK 1900-1980, to be held in Morley Gallery from July to September this year.

The exhibition will consist of displays of domestic objects and reconstructed rooms across the century. There will be events and activities based on the displays and a chance to talk about the past.

Could any SE1 readers lend us any of their old furniture or domestic objects for the exhibition? Many people think they have nothing 'valuable', but it's not the valuable things we want - it is the everyday objects like blacklead and flat irons that no one uses any more, or the old appliances and pictures that bring back memories of the way we lived; then. They don't have to be VERY old either; items from the fifties and sixties will be as welcome as those from the twenties and thirties.

We guarantee to look after your belongings. The gallery is very secure, and everything we use will be labelled with your name and the story of the object unless you wish it otherwise.

We can provide lists of the sorts of things we are seeking which you could show to your friends or neighbours. We would welcome any help you can offer in setting up the exhibition, and telling us about home life in North Lambeth and North Southwark.

If any readers have old objects we could borrow, or would just like to talk to us about the exhibition, could they get in touch with Rosemary Auchmuty on 735 5669 or Amanda Waley on 587 1665?

Rosemary Auchmuty

The Bermondsey People Care did it again this year - they organised a full Christmas dinner with all the trimmings including wine, sherry, fruit, chocolate and entertainment for 180 pensioners.

A team of volunteers from all over North Southwark showed us that Christmas is a time of caring and sharing. They worked throughout Christmas day making it a happy occasion for the elderly people of our area. Their commitment is greater however than just Christmas day - Bermondsey People Care have been raising money all year for this event, collecting over £2,000 from local people and organisations. The Fisher Football Club have been particularly generous with sponsorship.

The meal was provided in the Robin Suite of Guys Hospital

Guys also provided 30 bottles of sherry and the decorations. Social Services cooked the meals, only charging normal meals on wheels prices thanks to Council subsidy. Our senior citizens were sent home at the end of a lovely day with a present each and food for a meal on Boxing Day!

Now the year for Bermondsey People Care begins again, collecting money and presents for next Christmas. If you would like to help this year ring 231-1510.

NEW HOMES IN WATERLOO

Amid all the excitement of the last stages before new homes are built on the Coin Street sites, steady progress is being made elsewhere in Waterloo.

The G.L.C. modernisation of flats and houses in Aquinas Street is continuing and several flats have been allocated to new tenants. Approval for new homes on the Cut site and the corner of Stamford Street/Coin Street is being sought from the Housing Corporation.

Work on the new family homes for Pearman Street Housing Co-operative is expected to start this year.

On the existing properties the G.L.C. have also embarked on an ambitious modernisation for Windmill House.

All in all with Lambeths plans for Gray Street and the Campbell Buildings site, it all adds up to a brighter future for Waterloo.

SURGERIES

All local councillors run regular 'surgeries' where local people can take their problems and complaints concerning local matters. They can't guarantee to be able to sort everything out, but most will do their best.

LAMBETH

Bishops Ward includes all of Waterloo which is in Lambeth. Terry Rich (Labour) Thursdays at China Walk Tenants Hall 6.45pm

Also Bryn Davies, GLC councillor last Wednesday of the month at Waterloo Action Centre 6pm

John Medway and Paul Reynolds are holding a joint surgery with the SDP councillors in Princes Ward, Thursdays at North Lambeth Neighbourhood Council, 73 Lambeth Walk, SE11 at Blackfriars Settlement, 44 Nelson Square, SE1

Riverside Ward bounded by the railway line from London Bridge, down to Southwark Park: Barbara Burgess, Jim Patrick & Coral Newell.

First Friday of the month at Area 2 Social Services, Tooley St. 7.30 to 9pm

Second Friday Lockwood Rent Office, Drummond Rd 7 to 9pm
Third Friday Area 2 Social Services, 7.30 to 9pm
Fourth Friday Tooley St Tenants Hall, Fair St, 7.30 to 9pm

Chaucer Ward south of Cathedral Ward, down to New Kent Road: John Fowler, Anne Matthews and Jessica Wanmaker.

First Friday of the month at Hankey Place TA, Tabard Estate, 6 to 7.30pm

Second Friday at St Judes 6 to 7.30pm

Fourth Saturday at Rockingham TA 10 to 12 noon
They wish to point out that they are willing to hold special surgeries for groups, going out to them (eg for mothers & toddlers, senior citizens)
Contact John Fowler on 403 5275 (24 hour ansaphone)

Cathedral Ward the north east corner of the borough reaching to Borough Road and Borough High Street:

Alan Davis and Geoff Williams hold surgeries 2nd and 4th Fridays of the month, 7 to 8pm

LAMBETH VAUXHALL:

Labour's Stuart Hoiland is at the Citizens Advice Bureau on Mondays between 7 and 8pm 232 Kennington Road, SE11.

SOUTHWARK AND BERMONDSEY:

Liberal Simon Hughes or an assistant is at John Harvard Library every Saturday between 10.30am and 12.30pm (Borough High Street). Other surgeries are held on Thursdays in the non-SE1 part of his area.

You can write to your MP at the House of Commons, SW1.

TIME RUNS OUT FOR TRINITY

Just to prove there really is no Santa Claus the ILEA Sub-Committee decided at its meeting on December 14th to begin closure proceedings against Holy Trinity School. The decision had effectively been taken the previous Monday when the ILEA Labour Group decided by 7-14 not to support the school. This was despite the strong case put by the parents and the committed support of Lambeths ILEA representatives Councillor Bryn Davies and Councillor Helen Crossfield.

Margaret Morgan, Chair of Development Sub Committee argued that enough choice of schools already existed in Waterloo and that a recent report (which was so recent she was the only person to have seen it) proved that small schools provided poor educational standards. The parents were not convinced of this and pointed to the plentiful intake

of small schools just across the river in Westminster. ILEA it seems were prepared to close small schools in working class areas such as Waterloo and maintain them in prosperous Westminster. In any event it was necessary to have a comprehensive review of all primary schools in ILEA. Holy Trinity should be included in this review rather than be brushed aside at the beginning. ILEAs decision is very much the end of the first round rather than the end of the

fight. The parents have gained an extra year for the school and have the evidence of support in that sixty four children wish to go to the school. An appeal to the Secretary of State for Education to overturn ILEA's decision is likely and the prospects are favourable. What

is needed now is continued local support. A decision on the final future of the school is likely before the end of the school year.

Anyone who would like to help and any particular parent who is interested in finding out about the benefits of Holy Trinity should contact Friends of Holy Trinity, c/o. Holy Trinity School, Carlisle Lane, S.E.1. Tel.No.928 5447

PAINTING AND DECORATING FOR THE COMMUNITY

Springboard Southwark - your local Youth Training Scheme - will decorate the homes of the elderly, sick, disadvantaged, or community groups premises FREE. You only need to pay for the materials.

So if your place needs doing up, or you know somewhere that does ring Mike on 639 5203.

R.I.P.



ST. OLAVES' OUT PATIENTS CLOSES

Friday 13th proved to be a sad day for St.Olaves. Yet another part of its services has been slashed due to this governments latest round of spending cuts.

The hospital has been serving the Bermondsey community for 260 years and has built up a reputation of friendliness and efficiency. The hospital started to be shut down in 1979 when the 232 in-patient were cut after a long struggle by the staff and local community. Now that the outpatients have been closed all that remains is the day centre for the mentally ill and physiotherapy.

The St.Olave's Hospital Campaign, which mounted a demonstration last Friday to mark the closure is continuing its campaign to develop St. Olave's to serve the needs of the local community.

The campaign wants to see:-
1) Provision for the elderly for rehabilitation and short term relief.

2) Community Beds where patients would be treated by their own G.P.'s.

3) Psychiatric Provision providing drop-in and in patient accommodation.

4) Hospice for the care of the terminally ill.

5) Outpatient provision including post and ante-natal care.

Mrs. Rene Phipps, from the St.Olave's campaign said on Friday "Its going to be terrible for the elderly people around here who will now have to travel to Guy's or New Cross." For more information about the campaign ring Alan or Jill on 231 0916/7.

PROTEST !

WEST LAMBETH HEALTH EMERGENCY CAMPAIGN

For most people under 40 the health service is something to be taken for granted. Not any longer! Margaret Thatcher may say that "the NHS is safe with us" but more and more people are waking up to the fact that if they do not do something to stop them, Thatcher and Co will have carved up the NHS and presented it as a gift to their friends in private medicine.

Locally the District Health Authority is discussing cuts of over £2 million for the next year - for example at least £800,000 off at St. Thomas' alone. Cuts this size may mean ward closures and large scale redundancies - and this is only the first stage. The Government wants the DHA to make further cuts every year, rising to over £11 million in ten years time. This would threaten many of nationally renowned facilities at St. Thomas' as well as causing a drastic decline in standards across the board.

ARE YOU PREPARED TO SIT BACK AND WATCH THIS HAPPEN?

These cuts are not going unopposed. Health workers have joined forces with other representatives of local trade unions, political parties and community groups to voice their concern and call a halt to these disastrous cuts. Why don't you add your voice to our campaign? We are holding a launch meeting on 16th February (a Thursday) at 7pm in the Conference Room at County Hall. More details from WHEC at 1 Alverstone House, Kennington Park Road, SE11.

Greg Tucker



About 150 people from Southwark joined a 40,000 strong march from Hyde Park in protest at government plans to abolish the GLC. The march was called by the Democracy for London Campaign which has been set up by the trade unions at County Hall.

A contingent from North Southwark met at the Borough Community Centre and travelled up to Hyde Park to join the rally. It was a cold day and there was some delay leaving the park, but we got marching by one o'clock and it didn't take long to reach Jubilee Gardens by which time we had warmed up considerably.

At Westminster Bridge we met up with another 50 Southwark people waiting to join the lobby of M.P.'s at the House of Commons. Pensioners from NORSPAG and SPAG were particularly strongly represented here, North Southwark people first met with Peckham M.P. Harriet Harman and then went to see Simon Hughes, the M.P. for Bermondsey. Mr. Hughes said that he was opposed to the idea of abolishing the G.L.C. and London Transport and would be fighting the plans in Parliament. He also said that he was in favour of "extra Parliamentary action" like the marches and rally that day -

although those of us who remember the Bermondsey by-election might find this hard to believe. Mr. Hughes was asked what preparations the Borough councils, including Southwark, should make to take over the G.L.C.'s functions if it is abolished. He said he felt that councils should not co-operate with these preparations at least until the Abolition Bill is introduced in November. The day was a great success in view of the numbers who turned out to support a weekday march. At the meeting the next day in Peckham a Southwark wide campaign to save the G.L.C. was launched. It will include tenants associations, pensioners groups, disabled peoples groups, trade unions and anyone who wants to fight the government's plans.

A message from George Nicholson
the GLC/ILEA member for Bermondsey.

Dear Resident,
The Bermondsey Labour Party will be leading the fightback in the Constituency in coming months against the Tory Plans to dismantle Londoners' services and attack our living standards. I hope you will respond, whether by signing a petition, coming to a meeting or demonstration,

SOUTHWARK PEOPLE going to the house of commons to lobby their mp's to prevent the abolition of the G.L.C.

JOIN US....!!!

lobbying Parliament or joining us in the Labour Party to swell our ranks to continue the campaign until we have won.

One thing is certain about the Government's proposals. If they are not defeated, Londoners will be poorer and worse housed; unemployment will rise; community facilities will dwindle. The Green Belt will be eroded, while land is left blighted and derelict elsewhere. Land and property speculators will have a field day. Bus and Tube services will be cut and cost more; pensioners' passes will be threatened. Fire Brigade services will be reduced, and the Inner London Education Authority (ILEA) will be forced to cut the many services to young and old which are so necessary to build a future and which also give immense pleasure to hundreds of thousands of Londoners. The list of services the GLC and ILEA provide is enormous, and part of our campaign will be to explain in more detail why it is so important to save them.

It is not an accident that we have an elected council for Londoners. Every capital city in the world has one, partly because of the numbers of people who live in cities like London, and partly because of the nature of the problems and scale of services which no one borough could or should provide.

Almost one hundred years ago, London was delivered from the muddle, inefficiency and corruption of being run by various boards and vestries. Mrs Thatcher wants to turn the clock back and so destroy the steady progress made.

The Government is dressing up its arguments with 'economic necessity'. This is nonsense. With both GLC and ILEA getting no government grants, unlike all other local authorities, Londoners are paying twice: once in taxes, and then again in rates. This is why rates

have soared in recent years: by the Government holding back from London money due to it, and paid by Londoners in taxes. Part of the campaign is to make the Tories give us our money back. If they did, rates would be reduced.

We have a government which can't make up its mind whether it is running a museum or a concentration camp. The Tory Party masquerades as a party of freedom, but any opposition to their policies is being systematically squashed. This is the real reason behind the plans to abolish the GLC and force the ILEA and other local authorities to cut their services, and we must not let them get away with it. This will be a campaign about you, your friends and relations: the services we are fighting to defend are used by you, now or in the future.

During my 2 1/2 years as your GLC councillor, I have tried to see that Bermondsey receives as much GLC attention as possible. With local tenants organisations, I have managed to get new football pitches, parks, nurseries, community centres, local transport, youth facilities, playgrounds and many other much needed local facilities. The evidence is there to be seen. The GLC have bought the Courage site next to Southwark Bridge for new homes and jobs. Jobs have been protected and created by the GLC funded Greater London Enterprise Board. One of our greatest successes has been to bring sense to London's transport system and put an end to the motorway threat. The firecover at Dockhead has been restored, and we are starting to make progress in Docklands despite the existence of the LDDC. Whatever it says, the LDDC does not operate in the best interests of Bermondsey residents. And of course the ILEA still provides services dreamed about



in other parts of the country, but of which we are rightly proud.

Much remains to be done, but it is my belief that the Labour GLC has proved its worth.

A recent opinion poll showed a majority of Londoners in favour of keeping the GLC. In the weeks and months ahead, we will be calling on you for your support. The Government plans must be defeated. Whether it be to protect your children's interests, or pensioners' passes, defending the sick or evening classes - JOIN US!

Yours faithfully
George Nicholson

FAMILY CONCERTS AT MORLEY COLLEGE on Saturday mornings February 18th 10.30-12.30

EVEN BEARS CAN SING All bears are welcome to join the family for fun, games and plenty of songs from Margaret Field and Anna Benedict. And after the interval CARIBBEAN RHYTHM.. return visit by the Steel Band and Chris Johnson from Lilian Baylis Comprehensive School. Tickets at door: 70p adults, 35p children.

SOUTHWARK CATHEDRAL MUSIC.... Wednesday 15th February 8pm, concert by Morley College Choir. Tickets £2.50

LUNCHTIME ORGAN RECITALS Mondays 1.10pm to 1.45pm 13th, 20th and 27th.

LUNCHTIME MUSIC RECITALS Tuesdays 1.10pm to 1.45pm by students from: 14th-the Guildhall School of Music

21st - Trinity College of Music
28th - The Royal Academy of Music.
Admission free
Lunchtime recorded music
Thursdays 1.10pm to 1.45pm

Livesey Museum: "A LITTLE OF WHAT YOU FANCY...." an exhibition of London's Music Hall looking at all aspects from the stars and their music to the buildings. Costumes, music and video, admission free, Monday to Saturday 10am to 5pm.

682 Old Kent Road, SE15
(Phone 639 5604)

BINGO! AT BOROUGH COMMUNITY CENTRE

56 SOUTHWARK BRIDGE ROAD, SE1.

EVERY WEDNESDAY. DOORS OPEN AT 7.30
EYES DOWN AT 7.45. ADMISSION 15p
REFRESHMENTS ON SALE. ALL WELCOME.

There's a George of-all-trades at Waterloo road....!!!!

Our ever-busy GLC councillor for Bermondsey is seen here trying his hand at being a brickie. As chair of the Planning Committee he was helping(?) lay the last few bricks for the ducting in the new concrete floor at St. Johns Church in Waterloo Road. This is part of the crypt conversion for the North Lambeth Day Centre for the single homeless, which is partly being funded by the GLC under their Community Areas Policy. There will also be some meeting and other space for the local community groups.

He's obviously a real pro - look no dirt on the trousers!



A.W.G. IS AT THE CENTRE OF WATERLOO.

Reading most issues of S.E.1. it is quite obvious that Waterloo is the centre of a great deal of attention. With sympathetic councils at both the G.L.C. and Lambeth the views of the local community are regularly sought on a whole variety of issues affecting the area. How are such views given?

One extremely important source of local opinion is the Association of Waterloo Groups (affectionately known as A.W.G) which is based at the Waterloo Action Centre in Baylis Road close to Waterloo Station. A.W.G. acts as a Neighbourhood Council for the Waterloo area

and is made up of representatives of 32 local groups. These groups range from tenants, Housing Co-operative and Residents Associations to Pensioners Groups and local churches.

A.W.G. holds meetings at the Action Centre every six weeks at which everyone who lives in Waterloo is welcome to attend. These meetings are a very useful way of finding out what is happening in our area. At the last meeting for instance we heard details of British Rails Plans to improve their frontage along the collanade area in

Waterloo Road. As well as hearing about such plans local people can put forward their own views about the merits or otherwise of such schemes!

If you want to find out more about how A.W.G. can help you as a local resident or as part of a local group why not come to the next A.W.G. meeting. It is on Tuesday March 6th at 7pm at the Waterloo Action Centre. You'll be assured of a warm welcome.

READING AND WRITING WITH CHILDCARE.

We are washing teddies and piecing together train-sets at Blackfriars Literacy Scheme. No it's not a new Youth Training Scheme. Quite the opposite. We're busy getting our new creche in a state of readiness. There seems so much to do, we hope we get it done in time! In January mums who come to our Womens Group, and dads who have one to one help on a Monday afternoon will be able to get their kids looked after while they learn. Those who can't make Mondays can still contact us for help with childcare. We hope that from a few grubby teddies and broken train track big things will grow!

Actually things aren't that bad; we have some Urban Aid money for a qualified worker on Mondays and some equipment. If all goes well and we get further funding, we should be able to extend the provision. If you have any toys or equipment in good nick but not needed by yourselves we'd be pleased to take it off your hands. We urgently need a play pen and a door gate. If you would like to get help with reading and writing or maths, together with childcare, or you know of anyone who would like help, please ring us on 928-9521.



Being a cold month, this is a time for staying indoors as much as possible. Fortunately, there are plenty of indoor plants with flowers and colourful foliage to brighten up any room in the home. Some of my favourites are Cyclamen, peperomia, Fittonia, Maranta, Tradescantia, Begonias and Philodendrons. These and others are often on sale at the stalls on Waterloo Road (under the railway bridge and near the roundabout)



Maranta, known as the 'prayer plant' because its leaves curl up at night, it has beautifully textured leaves in sea green and purple brown.



Tradescantia comes in green and white or purple and silver.

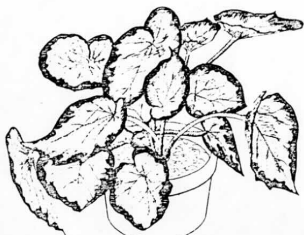
FOLIAGE



Fittonia, an easy plant with emerald leaves veined in silver, happy in a pot or window box.

PLANTS.

Philodendron scandens (creeping fig) is capable of climbing to the ceiling if given a bit of support.



Begonia Rex with leaves of green, purple and silver.

GARDENING WITH KEIB THOMAS INDOOR



GREATER LONDON DEVELOPMENT PLAN

The GLC invites you to help them revise and update the GREATER LONDON DEVELOPMENT PLAN. Thetime has come to reconsider the future of London. There are choices to be made; choices that reflect the everyday needs and hopes of all Londoners, for homes, jobs, shops, parks, transport and other services.

The GLC wants to involve as many people as possible. Their leaflet asks how you think we should, jointly, plan for London's future.

WHY DO WE NEED A PLAN? Without planning, London would be chaos;

To help in this task, they can rely partly on the existing strategic Plan - the Greater London Development Plan (GLDP) drawn up more than a decade ago. But it needs changing to make it relevant to London's current and future needs. Following earlier consultation, they are proposing new policies and priorities for the future of London.

THE CHALLENGE FACING LONDON The revised Plan's policies can achieve important benefits in terms of housing, jobs, services and transport; they can also ensure that the needs of all who live, work or visit London are brought to the fore and that the future of London is shaped in a democratic way. Only a unified Plan, speaking for London as a whole, can achieve this.

Not to have such a plan would be a recipe for chaos, conflict, expense and inefficiency. The GLC believes that London is one great city and should be planned as such, recognising local needs, problems and opportunities. WHAT DO YOU THINK?

The GLC is publishing the proposals, developing its partnership with boroughs, and consulting widely with Londoners to make sure that the revised Plan truly matches Londoners' wishes.

All those who wish have a right to be involved in preparing the Plan - we will all be affected by its outcome. The choice is ours.

Copies of the draft alterations to the GLDP can be examined at main council offices and public libraries or at County Hall at the address below.

The GLC wants your views by 2nd March 1984 on these proposals. Write to: GLC (TD/PM/PC), Room 450D County Hall, SE1 7PB

For a leaflet or brochure giving more information you can phone 01-633 4400.



BRICKLAYERS ARMS SITE.

BRICKLAYERS ARMS SITE. 7 ITS POTENTIAL FOR COMMUNITY USE.

BRICKLAYERS ARMS SITE - ITS POTENTIAL FOR COMMUNITY USE

You will, of course, know of Bricklayers Arms - a vast ex-British Rail freight depot running for over a mile in length along the Southern side of North Southwark. But most of us know of it only from the outside of the high walls that surround it.

ITS RECENT HISTORY:

For many years a lively depot, the site brought activity and work to North Southwark, but in recent years almost all of it has remained derelict. The last rail connection ran the length of the site right up until the late 1970s. British Rail still own almost all of the 30 hectare site although some is owned by the National Freight Corporation and some privately.

THE INTERESTED PARTIES:

British Rail are keen to sell the land as quickly as possible, and will not be particularly concerned about who develops the land or in what way. Southwark Council and the GLC see the site as being of major potential in bringing new jobs and industry to the area, and Southwark would also wish to build some housing if they had the resources. But how viable is any significant development on the site? Southwark Council will oppose development which they consider will not be of benefit to local people, for example office blocks, private housing. But their own ideas may not reach fruition in the near future as there is little public money around.

TEMPORARY USES

Can anything happen in the meantime? The answer, with will and commitment, is YES. The Youth Office in Southwark are keen to see a motorbike scrambling facility for young people. Ideas of this kind have worked successfully in other areas. The Bricklayers Arms site, with

adequate safety controls, provides an ideal opportunity.

Perhaps of more general interest, a number of local groups and a North Southwark architect have suggested schemes in recent months which deserve very serious consideration. They suggest a combined walkway/bridleway/cycleroad to run the length of the site. At its least ambitious, this needs simply involve access into and out of the site, and fairly inexpensive improvements to the road surface. There are horse stables on the corner of St. James Road and Catlin Street, which provide a valuable resource for local people. Cyclists could travel without the bother of car fumes and dangerous traffic, and residents on neighbouring estates could also enjoy a large space to walk in.

More ambitiously this idea can be developed - still without closing the way for future permanent development - by bordering the route with parkland, trees and greenery. This would build on the already growing ecological and wildlife refuge here. It would also link this 'greenway' with Burgess Park to the south, and to the old Surrey Canal, Russia Dock Woodland and Deptford Park to the east. Whilst clearly such a scheme not only requires commitment but also money, it provides a unique opportunity in inner London for miles of uninterrupted walkways which Southwark Council and the GLC as well as the local community should seriously consider.

Like any idea, it will only work well if it has considerable community support, so if you, your community group or tenants association are interested in knowing more and developing these ideas (or others), contact the Rotherhithe Community Planning Centre at 190 Southwark Park Road, SE16, or phone 231 0916.

GINA KULEVSKAYA

BOB'S RECIPES.

FRUITY SYRUP LOAF

8oz.(200g) self-raising flour
2oz.(50g) Ovaltine, plus 1 rounded teaspoon
4oz.(100g) mixed dried fruit
1oz.(25g) mixed peel, chopped
2oz.(50g) caster sugar
2 rounded tbsps. golden syrup
1 " " black treacle
kpt.(125ml) milk

Put 1 spn. syrup & 1 spn. black treacle & milk in a pan heat gently until syrup just melts, then pour into flour mixture & stir until well blended.

Put mixture in tin & cook in centre of oven for 1 hour or until firm. Turn loaf out to cool completely. Brush loaf with remaining tablespoon of syrup, then lightly sprinkle rest of the Ovaltine on top. Cut into slices & spread generously with butter. This is best eaten the day it is cooked, otherwise it could be rather dry.

Method

Preheat oven to 350F (180C)
Gas mark 4. Grease & flour a 1lb. loaf tin.
Sift flour into a bowl, stir in 2oz.(50g) Ovaltine, fruit,

SANTA'S VISIT TO TANSWELL MOTHER & TODDLERS CHRISTMAS PARTY.

Twenty-two children & their mothers invaded the Morley Community Education Building in December for Tanswell Mother & Toddlers Christmas Party. The growth of the group necessitated a change of venue this time & Morley came to the rescue with an offer of the Skills Room. The highlight of the after-

noon was the arrival of Father Christmas with a sackfull of presents. A good time was had by all, especially Father Christmas who was still to be found several hours later on his round of all the classes - giving greetings to all and joining the pre-Christmas festivities.



A KING VISITS

On December 14th High Chief Ibedu Yutaka M. Gibbons, King of the Palou Islands in the Pacific, visited the grave of his ancestor in St. Mary's Churchyard, Rotherhithe. What is the connection between Rotherhithe and these islands?

Two hundred years ago this year Captain Wilson of Rotherhithe, whilst sailing to China, was wrecked on the Palou Islands. The King of the islands entertained Captain Wilson and his men while they built a boat which they eventually used to sail to China. As a result of the friendship between the King and Captain Wilson, the King sent his son Lee Boo back to England with him.

Paradise

In England Lee Boo lived with Captain Wilson on Paradise Row, Rotherhithe. He learnt to speak and write English and attended school at an academy in Rotherhithe. He made many friends in England, impressing them with his amiable sense of humour and compassion. Unfortunately Lee Boo contracted smallpox after he had been here 6 months and died on December 27th 1784. Lee Boo was buried in St. Mary's Churchyard, Rotherhithe.

Lee Boo's descendant visited the grave with the Chairman of the National Bank of Palou and an Aide. They also visited the Museum of Mankind concerning Micronesia. It was a sad and deeply moving occasion with the High Chief uniting two opposite sides of the world while paying his respects to the prince. Some invited Rotherhithe children gave the High Chief two presents and wished him and his distinguished party hope and good luck for their islands future, and the continuing friendship which exists between us and them.



SUCCESS!

Just to show that the process of planning can bring results S.E.1. is pleased to report that local people have been successful in their campaign to stop property speculation on the Holy Trinity Institute site. Instead the G.L.C. will buy the site as a future extension of Archbishops Park.

This use is in line with the locally agreed Waterloo District Plan. It's implementation will depend very much on the future of the neighbouring Holy Trinity School.

The actual building is in a very poor state of repair which may preclude any community use even on a temporary basis. However if people do have suggestions for the use of the site perhaps they should contact the G.L.C. via Cllr. Bryn Davies or enquire at the Association of Waterloo Groups.

In the meantime thanks should go to the Waterloo Community Development Group, Canterbury House Tenants Association, Councillor Bryn Davies and Councillor Terry Rich. It was through their hard work that the Holy Trinity Institute site will be retained for the benefit of the local community.

BAD BUY FROM SAINSBURY'S

A PUBLIC INQUIRY begins on 14 February which will determine finally the future of 2 areas of land in SE1.

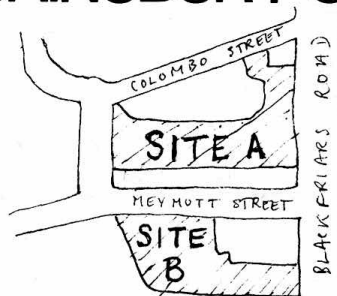
Once again, residents find themselves facing insensitive speculative office development - this time from SAINSBURY'S - which threatens the local social and community life.

Sainsbury's have had their plans for offices and multi-storey car park turned down once already. Not satisfied, they have appealed to the Secretary of State for the Environment. The resulting Inquiry will be heard at THE TOWN HALL, Peckham Road, SE5. SCUTHWARK COUNCIL and LOCAL RESIDENTS will be there to object to Sainsbury's plans.

The sites chosen by Sainsbury's - a major landowner in the area are:

SITE A: They propose a 6-storey office block.

SITE B: They propose an 8-storey office block on this part of Blackfriars Road, and a 4-storey car park offering 135 spaces on Meymott St



These proposals were refused by Southwark Council in July 1982. Their reasons were clear on two grounds:

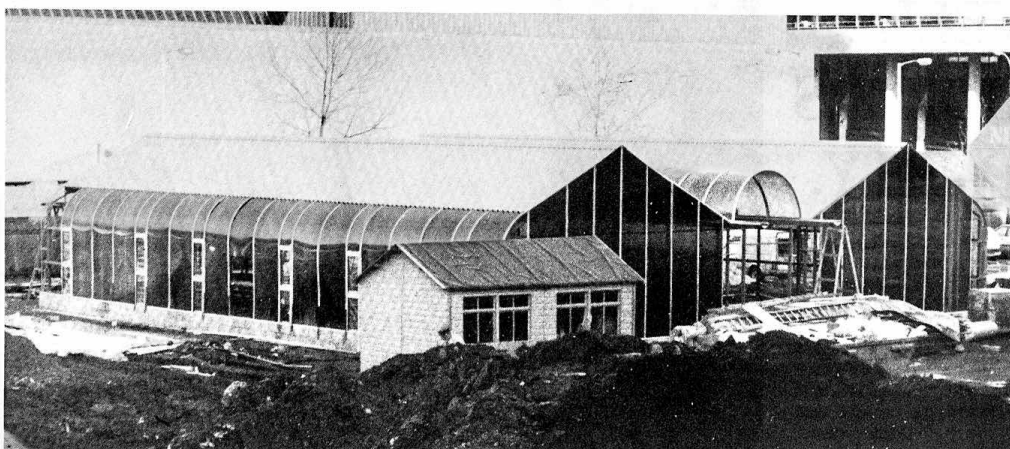
Offices: There is already a massive over-supply of offices in this area, and more are planned for Hay's Wharf and Coin Street.

Car Park: Increasing commuter car traffic is in opposition to the Council's own transport policies

These reasons were given after many public discussions and surveys showed that local people felt no need for more offices & traffic, and would rather see land used for other purposes: HOUSING, OPEN SPACES, RECREATION, SHOPS, ETC.

Surely it is time that big landowners like Sainsbury's listen to the demands of people who live here - and use their power and responsibility for the good of the community and not just for their own profit.

A new issue of COIN STREET NEWS hit the streets (ouch!) while we were going to press. It gives you all the latest information on the Coin St. Campaign: more copies from Waterloo Action Centre. On the left, the temporary design centre for the community scheme behind the National Theatre takes shape.



2 STAMFORD STREET HOSTEL

It now seems certain that the proposed hostel for 73-75 Stamford Street will go ahead. The G.L.C. agreed to the scheme in September and approached Lambeth who owned the whole terrace, to purchase 73-75 Stamford Street. The local ward Labour Party aware of the considerable reservations of local residents asked Lambeth not to sell to the G.L.C. unless certain guarantees were given. These guarantees were very much in line with the views expressed at the two public meetings and the Association of Waterloo Groups meetings. They include:

1. A review meeting one year after the hostel has opened, to assess its progress and the effect on the local area. The possibility to exist of the hostel closing or changing use if it is not working properly.

2. Local people to be involved in the selection of the management of the hostel and in its operations.

3. None of the other houses in Stamford Street to lose any part of their gardens.

The G.L.C. have now indicated their willingness to accept these guarantees and have included the need to gain local support into the job description of the Director for the Project.

Anyone who attended the two public meetings would appreciate that the whole idea of a hostel was unpopular particularly when the rest of the homes in Stamford Street are increasingly neglected. However local people now have an opportunity to ensure that the hostel works well and causes no disturbance to its neighbours. Anyone interested in being on the Management Committee for the hostel when it opens should contact Waterloo Action Centre, 14 Baylis Road, S.E.1. Tel.No. 261-1404.

The likeliest date for the hostel now looks like late 1984 or early 1985.

LABOUR

working for you locally...

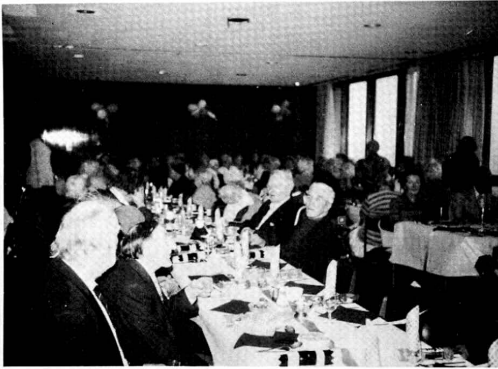
TERRY RICH, your LABOUR councillor

on Lambeth council

holds his surgery

EVERY THURSDAY EVENING 6.45-7.30
at China Walk Tenants Hall,
Lambeth Walk, SE1

BERMONDSEY PEOPLE CARE



Letters letters letters

Dear S.E.1.

January 16-21st was "Save the G.L.C." and ILEA week at Morley College. Every one of the 500 or so classes was visited by a student or staff member to explain the effect that the abolition of the GLC & ILEA, and the 'capping' of the rates might have on the quality of life in London and on Adult Education in Morley College with its 10,000 students in particular.

The ILEA is generous to adult education but because adult education is not a statutory duty on an education authority the compound effects of the abolition of the ILEA and the capping of the rates could be disastrous to a place like Morley. All parties in the GLC and ILEA including the Conservatives - for the retention of GLC/ILEA and many conservatives in parliament and local authorities are very unhappy about the effect on local democracy through the Rate Capping Bill. No one knows exactly how 'capping' would be applied, but it would hit the 'high spenders' and the high spenders in the inner cities with special problems - and the ILEA.

Morley students were asked to sign a petition against the break-up and nearly 3,500 did so. They were also asked to write to their M.P.s protesting - and many hundreds have, and some have also lobbied. Finally there was a goodly Morley contingent with its banner in the big march on Tuesday 24th January.

Barry Till
Principal - Morley College.

Dear SE1,

Morley College is planning an exhibition on HOME LIFE IN NORTH LAMBETH AND NORTH SOUTHWARK 1900-1980, to be held in Morley Gallery from July to September this year.

The exhibition will consist of displays of domestic objects and reconstructed rooms across the century. There will be events and activities based on the displays and a chance to talk about the past.

Could any SE1 readers lend us any of their old furniture or domestic objects for the exhibition? Many people think they have nothing 'valuable', but it's not the valuable things we want - it is the everyday objects like blacklead and flat irons that no one uses any more, or the old appliances and pictures that bring back memories of the way we lived; then. They don't have to be VERY old either; items from the fifties and sixties will be as welcome as those from the twenties and thirties.

We guarantee to look after your belongings. The gallery is very secure, and everything we use will be labelled with your name and the story of the object unless you wish it otherwise.

We can provide lists of the sorts of things we are seeking which you could show to your friends or neighbours. We would welcome any help you can offer in setting up the exhibition, and telling us about home life in North Lambeth and North Southwark.

If any readers have old objects we could borrow, or would just like to talk to us about the exhibition, could they get in touch with Rosemary Auchmuty on 735 5669 or Amanda Wooley on 587 1665?

Rosemary Auchmuty

The Bermondsey People Care did it again this year - they organised a full Christmas dinner with all the trimmings including wine, sherry, fruit, chocolate and entertainment for 180 pensioners.

A team of volunteers from all over North Southwark showed us that Christmas is a time of caring and sharing. They worked throughout Christmas day making it a happy occasion for the elderly people of our area. Their commitment is greater however than just Christmas day - Bermondsey People Care have been raising money all year for this event, collecting over £2,000 from local people and organisations. The Fisher Football Club have been particularly generous with sponsorship.

The meal was provided in the Robin Suite of Guys Hospital

Guys also provided 30 bottles of sherry and the decorations. Social Services cooked the meals, only charging normal meals on wheels prices thanks to Council subsidy. Our senior citizens were sent home at the end of a lovely day with a present each and food for a meal on Boxing Day!

Now the year for Bermondsey People Care begins again, collecting money and presents for next Christmas. If you would like to help this year ring 231-1510.

NEW HOMES IN WATERLOO

Amid all the excitement of the last stages before new homes are built on the Coin Street sites, steady progress is being made elsewhere in Waterloo.

The G.L.C. modernisation of flats and houses in Aquinas Street is continuing and several flats have been allocated to new tenants. Approval for new homes on the Cut site and the corner of Stamford Street/Coin Street is being sought from the Housing Corporation.

Work on the new family homes for Pearman Street Housing Co-operative is expected to start this year.

On the existing properties the G.L.C. have also embarked on an ambitious modernisation for Windmill House.

All in all with Lambeths plans for Gray Street and the Campbell Buildings site, it all adds up to a brighter future for Waterloo.

SURGERIES

All local councillors run regular 'surgeries' where local people can take their problems and complaints concerning local matters. They can't guarantee to be able to sort everything out, but most will do their best.

LAMBETH

Bishops Ward includes all of Waterloo which is in Lambeth. Terry Rich (Labour) Thursdays at China Walk Tenants Hall 6.45pm

Also Bryn Davies, GLC councillor last Wednesday of the month at Waterloo Action Centre 6pm

John Medway and Paul Reynolds are holding a joint surgery with the SDP councillors in Princes Ward, Thursdays at North Lambeth Neighbourhood Council, 73 Lambeth Walk, SE11 at Blackfriars Settlement, 44 Nelson Square, SE1

Riverside Ward bounded by the railway line from London Bridge, down to Southwark Park: Barbara Burgess, Jim Patrick & Coral Newell.

First Friday of the month at Area 2 Social Services, Tooley St. 7.30 to 9pm

Second Friday Lockwood Rent Office, Drummond Rd 7 to 9pm
Third Friday Area 2 Social Services, 7.30 to 9pm
Fourth Friday Tooley St Tenants Hall, Fair St, 7.30 to 9pm

Chaucer Ward south of Cathedral Ward, down to New Kent Road: John Fowler, Anne Matthews and Jessica Wanmaker.

First Friday of the month at Hankey Place TA, Tabard Estate, 6 to 7.30pm
Second Friday at St Judes 6 to 7.30pm

Fourth Saturday at Rockingham TA 10 to 12 noon
They wish to point out that they are willing to hold special surgeries for groups, going out to them (eg for mothers & toddlers, senior citizens)
Contact John Fowler on 403 5275 (24 hour ansaphone)

Cathedral Ward the north east corner of the borough reaching to Borough Road and Borough High Street:

Alan Davis and Geoff Williams hold surgeries 2nd and 4th Fridays of the month, 7 to 8pm

LAMBETH VAUXHALL:

Labour's Stuart Hoiland is at the Citizens Advice Bureau on Mondays between 7 and 8pm 232 Kennington Road, SE11.

SOUTHWARK AND BERMONDSEY:

Liberal Simon Hughes or an assistant is at John Harvard Library every Saturday between 10.30am and 12.30pm (Borough High Street). Other surgeries are held on Thursdays in the non-SE1 part of his area.

You can write to your MP at the House of Commons, SW1.

TIME RUNS OUT FOR TRINITY

Just to prove there really is no Santa Claus the ILEA Sub-Committee decided at its meeting on December 14th to begin closure proceedings against Holy Trinity School. The decision had effectively been taken the previous Monday when the ILEA Labour Group decided by 7-14 not to support the school. This was despite the strong case put by the parents and the committed support of Lambeths ILEA representatives Councillor Bryn Davies and Councillor Helen Crossfield.

Margaret Morgan, Chair of Development Sub Committee argued that enough choice of schools already existed in Waterloo and that a recent report (which was so recent she was the only person to have seen it) proved that small schools provided poor educational standards. The parents were not convinced of this and pointed to the plentiful intake

of small schools just across the river in Westminster. ILEA it seems were prepared to close small schools in working class areas such as Waterloo and maintain them in prosperous Westminster. In any event it was necessary to have a comprehensive review of all primary schools in ILEA. Holy Trinity should be included in this review rather than be brushed aside at the beginning. ILEAs decision is very much the end of the first round rather than the end of the

fight. The parents have gained an extra year for the school and have the evidence of support in that sixty four children wish to go to the school. An appeal to the Secretary of State for Education to overturn ILEA's decision is likely and the prospects are favourable. What

is needed now is continued local support. A decision on the final future of the school is likely before the end of the school year.

Anyone who would like to help and any particular parent who is interested in finding out about the benefits of Holy Trinity should contact Friends of Holy Trinity, c/o. Holy Trinity School, Carlisle Lane, S.E.1. Tel.No.928 5447

PAINTING AND DECORATING FOR THE COMMUNITY

Springboard Southwark - your local Youth Training Scheme - will decorate the homes of the elderly, sick, disadvantaged, or community groups premises FREE. You only need to pay for the materials.

So if your place needs doing up, or you know somewhere that does ring Mike on 639 5203.

R.I.P.



ST. OLAVES' OUT PATIENTS CLOSES

Friday 13th proved to be a sad day for St.Olaves. Yet another part of its services has been slashed due to this governments latest round of spending cuts.

The hospital has been serving the Bermondsey community for 260 years and has built up a reputation of friendliness and efficiency. The hospital started to be shut down in 1979 when the 232 in-patient were cut after a long struggle by the staff and local community. Now that the outpatients have been closed all that remains is the day centre for the mentally ill and physiotherapy.

The St.Olave's Hospital Campaign, which mounted a demonstration last Friday to mark the closure is continuing its campaign to develop St. Olave's to serve the needs of the local community.

The campaign wants to see:-
1) Provision for the elderly for rehabilitation and short term relief.

2) Community Beds where patients would be treated by their own G.P.'s.

3) Psychiatric Provision providing drop-in and in patient accommodation.

4) Hospice for the care of the terminally ill.

5) Outpatient provision including post and ante-natal care.

Mrs. Rene Phipps, from the St.Olave's campaign said on Friday "Its going to be terrible for the elderly people around here who will now have to travel to Guy's or New Cross." For more information about the campaign ring Alan or Jill on 231 0916/7.

PROTEST !

WEST LAMBETH HEALTH EMERGENCY CAMPAIGN

For most people under 40 the health service is something to be taken for granted. Not any longer! Margaret Thatcher may say that "the NHS is safe with us" but more and more people are waking up to the fact that if they do not do something to stop them, Thatcher and Co will have carved up the NHS and presented it as a gift to their friends in private medicine.

Locally the District Health Authority is discussing cuts of over £2 million for the next year - for example at least £800,000 off at St. Thomas' alone. Cuts this size may mean ward closures and large scale redundancies - and this is only the first stage. The Government wants the DHA to make further cuts every year, rising to over £11 million in ten years time. This would threaten many of nationally renowned facilities at St. Thomas' as well as causing a drastic decline in standards across the board.

ARE YOU PREPARED TO SIT BACK AND WATCH THIS HAPPEN?

These cuts are not going unopposed. Health workers have joined forces with other representatives of local trade unions, political parties and community groups to voice their concern and call a halt to these disastrous cuts. Why don't you add your voice to our campaign? We are holding a launch meeting on 16th February (a Thursday) at 7pm in the Conference Room at County Hall. More details from WLHEC at 1 Alverstone House, Kennington Park Road, SE11.

Greg Tucker