

SEL

NUMBER 25

15p MONTHLY.

JUNE '84

STRAIGHT FROM THE HORSES MOUTH

1 MILLION SIGNATURES !

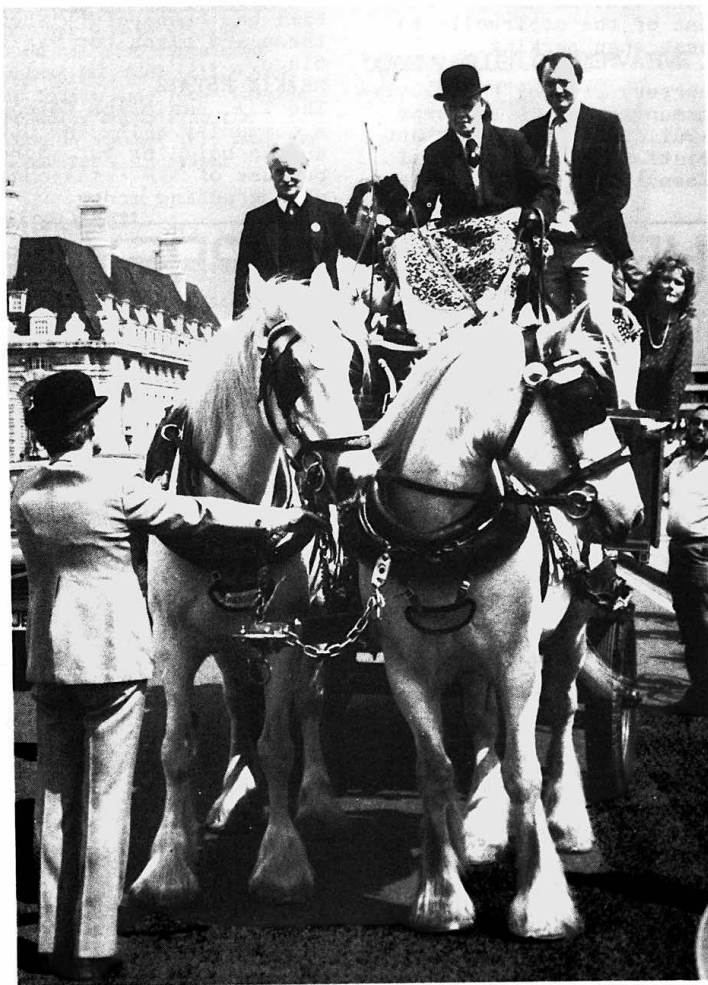
The 'Save the GLC petition - Say No to No Say - was handed in to Parliament last Thursday. The petition was described by Ken Livingstone as 'the greatest petition of our time'.

The boxes of petitions were delivered to Parliament by horse drawn wagon, a symbolic reminder of the Chartists' great petition of 136 years ago, who also demanded the right to vote.

The petition was seen off by thousands of well-wishers who had gathered for a picnic and to hear speeches from Ken Livingstone and others. Coaches had carried people there from all over London including a party from North Southwark.

Opinion polls now show that $\frac{2}{3}$ of all Londoners oppose the abolition of the GLC. In Finchley, Mrs Thatchers own constituency, only 12% support her plans to abolish the GLC elections next May.

WHEN WILL SHE LISTEN TO WHAT LONDONERS WANT ?



RETURN OF THE CRAWLIES!

Parts of North Southwark are being hit again this summer by infestations of the caterpillar of the Brown Tailed Moth.

The caterpillars are about 1 inch long and are brown and hairy. The hollow hairs can cause severe irritation and even temporary blindness if they get in your eyes.

The Council didn't have the funds to tackle the moths in the winter by burning the cocoons which makes a plague of caterpillars this year more likely.

If you see the caterpillars in a public place you can call the Environmental Health Officer on 231-7331 and ask them to deal with them. Mild irritation can be treated with calamine lotion. Severe irritation may require a visit to your doctor.

Elaine Holland

NOT THEIR CUP OF TEA

6 workers, who joined a union last week, have been sacked from James Ashby and Sons Ltd.

The workers, who joined the GMBATU are being supported by their union and will probably go to an industrial tribunal.

James Ashby is a Tea and Coffee Merchant in Union Street.

INSIDE...INSIDE....INSIDE.....

Your guide to the Euro Elections on page 3; Activate at Colombo Street, centre spread; Waterloo Womens Day page 7.

HOUSING DOWN THE DRAIN

Anyone left in Waterloo who still thinks that the proposals to remove the GLC are merely a set of academic proposals that are going to affect someone else, had better think again!

Several of the housing projects in Waterloo for which local people have fought to gain are now in serious jeopardy.

This is a direct result of the government's decision to cut SIXTEEN MILLION POUNDS from

this year's housing budget with no warning. This has caused chaos in the GLC Housing Department which is presumably what the government intended.

Now the proposals for housing on Aquinas St./Theod St. which the GLC were keen to develop are no longer certain to go ahead. The planned development of six family houses in Morley St. by Pearman St. Housing Co-operative could also be threatened.

Just to show what things could be like if the government succeeds in removing the GLC, we have only to look at the Tanswell Estate. There, the Department of the Environment have rejected for the third time tenant's pleas backed by the GLC to improve the external areas of the Estate. It is only the determination of the tenants and the support of the GLC that gives any hope for eventual success.

The local newspaper!

ON YOUR ESTATE

TABARD GARDENS

The T.A. has obtained rate reductions for the tenants of Stroud, Balim and Pilgrim Houses because of the disturbance caused by scaffolding during modernisation. Work is continuing on the Community Nursery, the foundations have been laid and it is due to open in August. **WEBBER ROW**

The T.A. are trying to get Webber Row closed to through traffic to reduce the noise and to make the estate safer for children and pensioners.

TANNERS, TYERS AND WHITES GROUNDS

The T.A. has been allocated a shop in Tanner St as a tenants hall. So far a surveyor has inspected the building and the council has made a grant of £8,000 to do it up.

MARSHALSEA ESTATE

Major maintenance is underway on Ayres St with a new roof, concrete, doors, windows etc. T.A. chair Linda Kerley, veteran of previous modernisation problems, claims the contractors - Wisby's - is the best she has ever worked with. Meanwhile the Council has finished the courtyard improvements, the T.A. is now pressing for concrete bollards in-front of the stairwells to stop people blocking the access when parking.

ROCKINGHAM ESTATE

After moments of doubt the nursery project has received funding from the GLC's Community Areas Programme for a 25 place day nursery. Building is due to start in August. The Nursery Association had its inaugural meeting on 16th April. The Association is running an

introductory course for those wishing to work with the under 5's on Wednesdays 1-3pm. Contact Brigitte on 407-0118. The Dickens Fest will be on Saturday June 5. **CROSBY ROW, LOCKYER AND PORLOCK STREET.**

The recently installed galleys gates are to be repositioned to allow access for prams. The T.A. at a recent meeting decided to press the Council for a satisfactory rubbish bin system to stop rubbish being left in bags around the estate. The Community Flat which had been allocated but not handed over to the T.A. has squatters in it.

TOOLEY STREET

Courtyard improvements are taking shape on St Johns Estate which will mean ground floor tenants will each get a small garden. After a 7 year struggle by the T.A. the window frames in Devon Mansions are being replaced and door entry phones are being installed as a trial on 3 blocks. The Bermondsey Community Nursery Project has just received 2 years funding from the GLC Womens Committee after a long period of uncertainty. This will mean the nursery can open 5 days a week from September.

LAWSON ESTATE

The refurbished community hall was opened on Monday 21st with a party attended by over 50 people. The hall has been refurbished by Southwark Council and there are plans for various uses including pensioners bingo.

MEAKIN ESTATE

The T.A. has plans to convert a shop in Decima St into a community hall. The GLC has granted money to renovate the building but there are delays at the moment because of the legal conditions required by the GLC when granting money.

THATCHER VISITS SURREY DOCKS

The LDCC attempted to boost its flagging image in April by inviting Mrs Thatcher on a press tour. Mrs Thatcher, Denis and Patrick Jenkin (Sec of State for the Environment) arrived at Cherry Gardens Pier to be welcomed by none other than Mr Robert Mellish and Mr John O'Grady.

A more genuine reception was however provided by a crowd of local people protesting at the LDCC's theft of land from Southwark Council and its complete failure to provide homes at rents local people can afford or jobs for local people.

Mrs Thatcher was whisked away from the local people who she has shown a conspicuous lack of concern to a photo call in Surrey Docks. Once on safer ground, playing to the cameras, she donned a safety helmet to look the part (despite there not being a bit of falling masonry in sight). She then nearly obliterated the whole press corps when trying to drive a digger for the photographers.



LOCAL PEOPLE SAY WHAT THEY WANT

especially to the pensioners who organised the days events. Special thanks must be given to the GLC for funding the project.

There are a number of pop in parlours in Southwark all of which are successful, but this is the only one managed by Pensioners for Pensioners.

All pensioners are welcome to the Pop In on Tuesdays and Fridays 11am to 2pm for cheap teas, coffee and snacks. There are daily papers provided. There is also a T.V. lounge and a number of games such as old favourites like shove halfpenny, draughts, cards etc.

LOOKING FORWARD TO SEEING YOU AT THE POP IN.

Linda Kerley



POP IN!

April the 24th was the grand opening of North Southwark Pensioners Action Group's POP IN PARLOUR at the Borough Community Centre, 56 Southwark Bridge Road

The opening ceremony was performed by the Deputy Mayor and Mayoress. Many thanks to everyone who attended the opening and

EUROPEAN ELECTIONS - JUNE 14TH

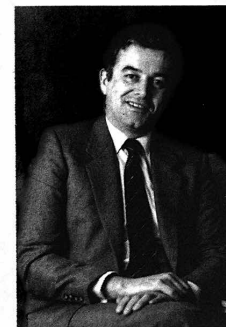
The European Elections take place on Thursday June 14th. The purpose of these is to elect Members to the European Parliament. This is a body of elected representatives from the member states of the EEC. It has limited 'advisory and supervisory' powers, and except for the right to veto EEC budgets, its only real power is to delay EEC legislation by insisting on its right to discuss proposals. However, although the Council of Ministers represents the Governments of all member states of the EEC, the European Parliament is the only EEC body which is elected specifically for the EEC by the people of Europe.

The United Kingdom has 81 Members of the European Parliament (MEPs). The area covered by 'SE1' comes under the London South Inner constituency, which consists of the whole of Southwark and Lewisham, and most of Lambeth. Our present MEP is Richard Balfe.

Below is a short statement of the aims of each of the four candidates standing in this constituency.

RICHARD BALFE, LABOUR

RICHARD BALFE says "Long term unemployment up 58%, women's unemployment up 26%, youth unemployment up 234%: this is the harsh reality of 5 years' Tory government." Since he became your Euro MP in 1979, Richard Balfe has taken steps to ensure that European money reaches the people of SE1. He helped with the Blackfriars Settlement's application to the European Social Fund for a grant to launch the Elephant Jobs Project - the first ESP funded scheme to be set up in London. Since then further local projects have been established, providing vocational training for women,



the young and the disabled - Thatcher's main victims.

He has also campaigned against EEC food policy, and has fought many local battles, including supporting the campaign against Tory measures to develop Coin Street.

JIM DALY, SDP



JIM DALY says "300,000 jobs might be lost in London were

Britain to leave the EEC. The Labour Party promise to take Britain out of Europe is left wing madness. More firms would shut, more jobs would go and would be left isolated in a dangerous world. Meanwhile this pig-headed Conservative government opposes any new plan which would lift Britain and Europe out of economic misery. Only by adopting strong and radical policies with our friends in Europe can we defeat high unemployment, world poverty and the threat of unthinkable war."

Jim Daly has experience and knowledge of London's problems and a commitment to solve them. He helped to found the SDP and strongly supports Britain remaining in Europe.

DOREEN MILLER, CONSERVATIVE



DOREEN MILLER says "we are in the European Community to stay and we must take advantage of every opportunity to obtain benefits for the area." She feels that the opportunities for securing EEC grants for London South Inner have not been fully investigated. Doreen knows Europe well as she has travelled and worked extensively on the Continent. She is a committed European, but she believes the Common Market must be made to work more for British interests. She is also

concerned about the need to promote better language facilities in schools, and if elected she intends to campaign for the elimination of waste and unnecessary bureaucracy, and for a fairer system of EEC budget contributions.

JANICE OWENS - ECOLOGY PARTY/ WOMEN FOR LIFE ON EARTH (Photographed here with two of her daughters)



JANICE OWENS says "Countries with proportional representation, such as West Germany, will be sending Greens to Europe. I am counting on people's faith in the future to encourage them to vote for the politics of the future. I am standing because I want: a Europe free from the fear of nuclear disaster; an agricultural policy that favours mixed farming on sound organic principles; a Europe where the Convention on Human Rights is seen to guarantee protection to everyone; proper acknowledgement of work done by women, and a diversity of employment based on human skills; an end to industrial practices which are destroying our surroundings and our health; and many other policies which a Green Europe would work towards."

CHARTERHOUSE TOY LIBRARY

Last year Charterhouse Toy Library was fortunate enough to secure a substantial grant from the GLC (Community Areas Fund) and Southwark Council to install all toilet facilities and a new heating system. Due to the complex nature of the building works the Toy Library was forced to close for a period of 4 months while the work was in progress, but since re-opening the library has been as busy as ever.

At the beginning of May there was an official re-opening attended by our GLC Councillor George Nicholson and on behalf of Southwark, John Fowler, along with other local people and toy library users.

During the afternoon there was a short play performed by 'The Upstream Theatre Club' which went down very well with the mums as well

as with the children. There was also a raffle to swell toy library funds, the first prize (a gigantic bugs bunny) was won by Mrs Rose Haste of Stroud House, Tabard Estate.

Thanks to everyone who

came along and made the afternoon such a success and to those who helped make everything run smoothly, especially to Anne, Sheila and Wendy who were a bit puffed after blowing up 50 balloons.

Val Smith.



CHANGES IN SOUTHWARK

At the recent meeting of Southwark Council's Labour Group Tony Ritchie replaced Alan Davis as leader of the Council.

Tony Ritchie has for the last 2 years been chair of Southwarks Housing Committee, this position is now being filled by Nick Snow who was previously vice-chair of planning.

The planning chair for the 3rd year running is Geoff Williams of Cathedral Ward. The social services chair is now Rose Headley.

The Mayor for this year is Jim Greening. Jim is a printer and lives in Walworth, he has served on the Council for many years.



THE HATFIELDS OPEN SPACE

THE PAST

The Colombo Street Sports and Community Centre is a self-help project which aims to convert and fully utilise a once-disused canteen building for the recreational benefit of local residents and workers of north Lambeth and north Southwark.

THE PRESENT

The project, which is a registered charity controlled by a local resident management committee, began in 1976. The committee and staff welcome all visitors to the Centre and would appreciate all offers of assistance in running the project. Centre facilities include a large hall (75' x 60') available for social use, a gymnasium (35' x 60'), weight-training room and numerous small meeting/conference rooms. We also administer the floodlit, outdoor Hatfields open space. There are provisions for the disabled, such as a wheelchair ramp and toilet facilities. Part of the new Southwark "Action Sport" team is based at the Centre. Their aim is to increase sports participation in the area served by this Centre. Centre membership is open to local residents and entitles them to lower charges for activities. Please ask for separate sheets on membership and charges.

THE FUTURE

The Colombo Street Centre has come about by the efforts of local people. We have proved that it can be done. If you have any ideas for new activities (sporting or non-sporting) please come and let us know and we will try and make them possible. The Centre is not at present open to any great extent at weekends why not come and help and perhaps it could be.

The Management Committee feel there is a need for the following new indoor facilities in this area:

- (i) some form of social club for local residents
- (ii) a social hall for parties, wedding receptions
- (iii) a snooker hall
- (iv) sauna
- (v) workshop type facilities for training, arts and crafts, etc.
- (vi) unemployed peoples' facilities
- (vii) more outside facilities for tennis, volleyball and carpet bowls.

Why not come over to the Centre and have a look at what we're doing?

WHY NOT GET INVOLVED - THE OFFER'S THERE!

CENTRE MEMBERSHIP IT PAYS TO JOIN

We have a Centre Membership open to all who live in the SE1 and SE11 postal district.

Non members pay a 30p admission fee in addition to the sessional charge for their activity - so it pays to join!

ANNUAL MEMBERSHIP CHARGES:

Over 16's - £4.50
Senior Citizens - £1.00
Unemployed - £1.00
Under 16's - £1.00

COLOMBO
STREET

SPORTS
AND
COMMUNITY
CENTRE

SOMETHING FOR EVERYONE SPORT FOR ALL AGES



AT THE
**COLOMBO
STREET
SPORTS
CENTRE**

FOR MORE INFORMATION

Contact Ros or Tom at Colombo St., SE1.

Tel. 261-1183.



OUR SENIOR CITIZENS ANNUAL XMAS PARTY

The last old age pensioners party was enjoyed by 100 pensioners who were provided with a 3-course dinner and entertained by cabaret and a live band. Photograph shows The Mayor of Southwark, Councillor Sam King who together with numerous others helped to make the party go with a swing.



ALL AGES ENJOYING KARATE

COLOMBO HAS ITS OWN PLAYGROUP

During term-time between 9.30 & 12 o'clock Mon. - Fri. for children between the ages of 2½ and 5. For more information contact Alice Ball (Playgroup Organiser) at the Centre or telephone 261-1658.

A PENNY FOR YOUR THOUGHTS

WE ARE HOPING TO START OPENING AT WEEK-ENDS - HAVE YOU GOT ANY IDEAS FOR NEW ACTIVITIES AT THE CENTRE - SOME SUGGESTIONS HAVE BEEN:-

Aerobics Uni-hockey Gymnastics Roller Skating Volleyball Yoga
Dancing Table-Tennis Basketball Indoor Bowls

BUT TELL US WHAT YOU'D LIKE TO SEE

We can also arrange courses if there's enough demand, i.e. Badminton, Weight-training etc.

YOUR SUGGESTIONS FOR WEEK-END ACTIVITIES.

I'd like to suggest.....as activities at Colombo Street on Saturday/Sunday.

If the Centre was to open week-ends, I would use it during these periods:

Saturday 10am-2pm ☐ 2pm-6pm ☐
Sunday 10am-2pm ☐ 2pm-6pm ☐

Don't forget you can join in with any of the 25 regular activities which already take place Monday-Friday.

Name.....Telephone no.....
Address.....

Please return this form to COLOMBO STREET SPORTS & COMMUNITY CENTRE, COLOMBO STREET, BLACKFRIARS, SE1 8DP.

GOT GREEN FINGERS?



Photo Camille Young.

"Roots and Shoots" in Kennington are looking for nine trainees to join them on their Horticultural Project. Interested youngsters with learning difficulties should be resident in Lambeth and be between 16-21 years to qualify for this youth training scheme. Linda Phillips, who manages the Lady Margaret Hall settlement, says that she can take a maximum of 18 trainees and added that "in a year we can offer them experience in such fields as literacy and numeracy, woodwork, social and life skills, and pottery and cookery - trainees are responsible for the preparation of their own lunches". Of those employed here over the past two years, 60% have found work, for

instance in Lambeth Council's Park's Dept., factories, etc.

The products from "Roots and Shoots" and its sister site at Normans Croft Old People's Home, are on sale to the public at the centre in Walnut Tree Walk. These include vegetables, potted plants, window box flowers and summer bedding.

The new Garden Centre at Gipsy Hill will hold its 'Open Day' on May 12th, with a celebrity appearance by Richard Briers of the TV programme "The Good Life". (This new centre will offer ex-trainees full employment after their training.)

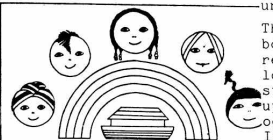
Linda Phillips can be contacted about these vacancies on 587 1131, 9am-5pm, Mon-Fri.

CHANGES AT CHARTER HOUSE

The big old building in Crosby Row has been re-named 'THE RAINBOW'. This building now houses the Youth Project. The I.T. Project. St. Hughes Church and The Toy Library. The name was chosen by 5 judges from 50 entries. It was chosen because it linked in well with 'THE ARK' the other settlement building in Crosby Row.

The first floor of The Rainbow is a large hall which will have a quieter coffee bar area and an area for table tennis etc. Although primarily for the use of the Youth Project, the Settlement is very keen for other groups to use it as they want to get good use out of all their buildings for the benefit of the local community.

The 1st floor of The Rainbow has been extensively reorganised and there are lots of small odd jobs still to do like putting up shelves, noticeboards, odd bits of painting etc. If you would like to help contact Garry or Mina on 407-5666.



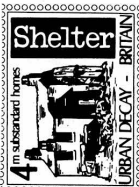
GRAND OPENING Charterhouse Rainbow Crosby Row

FOOD FESTIVAL FRIDAY 6th JULY 7-9pm
Adults £1 OAP's/under 16 75p.
Family ticket (2 adults + 2 children) £2.50.

Far Eastern, Indian, Afro-Caribbean Food etc.
DISCO SATURDAY 7th JULY
6pm-7.30pm under 16's FANCY DRESS with prizes.
Refreshments for sale Admission 30p.

8pm-11pm 16's upwards Admission 30p refreshments for sale.

Tickets available in advance.
If you can help with either event contact Mina or Garry at the Ark or Rainbow, 407-5666.



GARDENING WITH KEIB THOMAS



Congratulations to Lambeth Department of Amenity Services for gaining a Silver Medal Award for their Bedding Plants display at the 1984 Chelsea Flower Show. I visited the show on its last day, Friday May 25th and headed straight for Lambeth's excellent display. Despite the crush of people, I was able to get around the 3 1/2 acre Marquee. It took 12 workers two weeks just to put up the tent! To get an idea of its size, imagine Waterloo Station filled with 120 garden size displays packed with spring and summer flowers.

...In the middle of the rush hour! The displays are full of colour and shape but trying to get around is exhausting because of the crowd. I shall give it a miss next year and watch it on "Gardener's World" - and visit it next in 1986. It was well worth the visit, Lambeth's Silver Medal success made me think of the parks and open spaces (or lack of them) in the 'SE1' area.

I have encouraged readers to visit the Copperfield Street Community Garden in the past, it's time for another as it is filling up with flowers and foliage once again, it's so fresh, secluded and a real sun trap all day.

There are plenty of good quality MARIAGOLDS, LOBELIAS, GERANIUMS, DAHLIAS, ALYSSUM, etc. on sale in stalls and various shops in the 'SE1' area.

Photos Peter Simmons.



EXHIBITION FURNITURE NEEDED

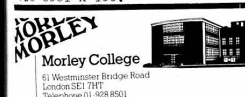
LOCAL HISTORY EXHIBITION HOME LIFE 1900 - 1980

Plans for exhibition are progressing well. It will be open from July 2nd to August 31st at the Morley Gallery, 61 Westminster Bridge Road, London SE1. We are going to create rooms from every decade during that period i.e. a pre-1st World War parlour, a 1920s kitchen/living room, a 1930s lounge, a 1940s lounge, a 1950s scullery, a 1950s bedsit, a 1950s cocktail cabinet area and a 1960s bedroom, we are also going to have a washing area and a sewing area. We still need loans of articles and furniture i.e. beds, dressers, cocktail cabinets, tables etc., wallpaper, curtains/curtain fabric and floor coverings.

We also need help with putting up the exhibition i.e. some building work, collecting items, setting up rooms, advice on exact period of objects, wallpaper etc.

We are also organising a programme of events i.e. showing of old films, Music Hall, Tea Dances, a working day, fashion parades etc.

If you have any articles to loan or you can help in any way please ring Anne Dolan or Eithne Nightingale on 928 8501 x 155.



JOIN EARLY

HOW DOES ONE JOIN A MORLEY ADULT EDUCATION CLASS AND AVOID THE SEPTEMBER QUEUEING? ANSWER-BY ENROLLING IN JUNE!

Monday-Friday, 18 June-22 June.
FROM - 12.15 - 12.45p.m.
1.45 - 2.15p.m.
5.30 - 7.00p.m.

Also at these times on TUESDAY AND WEDNESDAY 26 & 27 JUNE AND 3 @ 4 JULY.

Or by enrolling a week early in September on -
Wednesday, Sept. 12 1 - 3p.m.
5 - 7p.m.
Thursday, Sept. 13 1 - 3p.m.

PLEASE COME AND ENROL IN THE MAIN BUILDING OR THE BRANCH WHERE THE CLASS TAKES PLACE.

AVOID QUEUE!

THIS PREFERENTIAL EARLY ENROLMENT IS AVAILABLE ONLY TO PEOPLE LIVING IN SE1 AND SE11, that is those people who live north of London Bridge, Elephant & Castle, The Oval and Vauxhall Bridge.

THE NOISE ABOVE is a new club at the Bridge House in Borough Road. It's run by Allison, with help from Geoff. Allison started the club "because there's nothing else happening in South London".

The opening night featured punk veterans The Mekons, and new band Five Go Down to the Sea. The Mekons were brilliant. Their 7-piece lineup includes an ex-member of the Rolling Stones, and uses three guitars, a bass, drum machine, violin, tambourines and voices. They are totally disorganised, but set a vaudeville example which the likes of Duran Duran would do well to follow (BREAK JOHN THOSE BARRIERS!).

The gig was a financial success (Allison: "I made £1 and Geoff made £1"), and future attractions at the Noise Above include the Luddites and Ut on June 6th, and the Mebranes and Ut (again) on June 27th. Other dates, hopefully including a miners' benefit, are not yet confirmed, but ring Allison on 703 9553 for details. Any good bands wishing to play there should also ring her.

CENTENARY OF JAMES ADAMS & SONS LTD 1884-1984

James Adams was born in 1835 in Hayling Island, Lancs. Soon after his birth the Adams family moved to Fareham, Hants.

In 1854, at the age of 19 years, he came to London. About this time he married. After a brief spell in London, he moved to Smethwick, Birmingham, where he gained valuable engineering experience.

In 1882 the family returned to London and settled in Southwark. About this time, James Adams was confined to his bed with a bad attack of Sciatica. One day his bedroom door had not been closing properly, resulting in continual rattling.

He was determined to invent a spring which would close the door silently, and thus was born the "SLAVE" On the 9th

June, 1884 he founded his business, which today is known as James Adams & Sons Ltd. It was started in one room at 21 Union St, Southwark, later moving to 7-11, and then to 105 Union Street.

In September 1936, the business moved to 26 Blackfriars Road, from where it still operates today.

Mr Adams died on the 9th June 1911, just 27 years after the business was founded. The present owner of the business is the last surviving relative, and is the grand-daughter of the founder.

To commemorate the Centenary of James Adams & Sons Ltd, 1884 to 1984, a stained glass window has been erected in Christchurch, adjoining the business premises.

WATERLOO WOMENS SATURDAY.

A day for all women is to be held at....

Morley College, COMMUNITY BUILDING, KING EDWARD WALK, S.E.1.

ON SATURDAY JUNE 16, FROM 10.00a.m. TO 4.00p.m.

LOTS TO DO!

JUNE 16

There will be displays and information on lots of issues such as, HEALTH, EDUCATION, TRAINING, ARTS, WELFARE, RIGHTS AND CHILDREN



COME



WHY NOT COME AND TRY OUT THE MANY DIFFERENT ACTIVITIES WHICH WILL BE HAPPENING.

ALONG! JUNE 16.

CARPENTRY
CAR MAINTENANCE
WOMENS ASSERTION
ARTS AND CRAFTS
HEALTH AND BEAUTY CARE
STYLING AFRO-CARIBBEAN HAIR
LEARNING TO USE VIDEO EQUIPMENT
KEEP FIT
SELF DEFENCE
YOGA
MASSAGE
COOKERY
PHOTOGRAPHY
ACUPUNCTURE



THERE WILL ALSO BE MUSIC, THEATRE, DANCE AND FOOD.

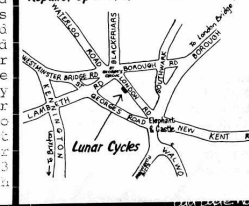
WORKER FOR COIN ST. NEEDED

WORKING FOR COIN STREET

Two workers are needed to assist the local community in the implementation of the Coin Street scheme for housing, industry, shopping and recreation. The two posts are: Finance and Administration Worker; and an Implementation Worker to co-ordinate and ensure wide community involvement. Further details from Waterloo Community Development Group at 99 Upper Ground, SE1. Phone 633 6402. Closing date is 11th June.

Lunar Cycles Bicycle Repair Co-operative

13 London Road, London, SE1
Tel. 01-261-0602
Tues-Sat 10-6
Repairs, Spares, Accessories

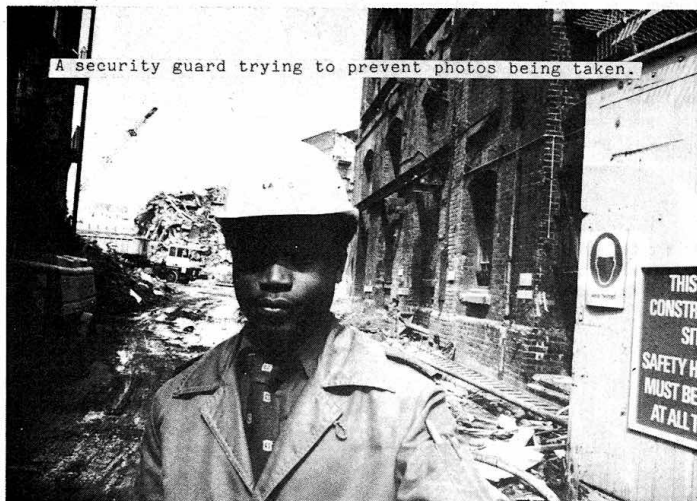


WHAT ARE THEY HIDING ?

An SE 1 photographer snapping away at the destruction of Hay's Wharf got more than he bargained for. A security guard rushed out, pushed him against a wall and tried to convescate the film!

St Martins Property Company (who are planning to build offices and luxury housing on Hay's Wharf) having bypassed the normal planning procedures now think they can stop people taking photographs of what they are doing!

One of the security guards mentioned the company being afraid of people noticing them knocking down things of historic importance. The GLC and Southwark Council have been informed.



A security guard trying to prevent photos being taken.

HOMING IN

Lambeth Council are showing their commitment to the fight by the Waterloo community for HOMES NOT OFFICES by calling a public meeting on Tuesday June 5th at 7.15pm to discuss the recommendations of the Campaign for Homes in Central London (CHiCL). All local organisations and residents are invited

to come along to the Coin Street Design Centre at 99 Upper Ground (the red 'greenhouse' behind the National Theatre). Local councillors and the chairs of Lambeth's Housing and Planning Committees will be there. The idea is to see how Lambeth, the GLC and local people can work together to advance the aims of CHiCL. See you there!

A DAY ON THE RIVER

Who said protesting can't be fun? The two were combined on April 17th when 1000's of people all over Docklands held local events culminating in an Armada up theriver taking people to a picnic in Jubilee Gardens and a petition to Downing St.

In Southwark local protestors against offices swamping the area dressed up as houses and offices and staged a mock battle on London Bridge. A giant puppet of Mrs Thatcher fought on the side of the office developers.

Another local issue - HEALTH CUTS - was highlighted by street theatre in Guy's Hospital by Tina Brian, Neil, Paul, Les, Jane and Yuk Ying from Charterhouse Youth Project.



This was followed by a procession down Borough High St to Tooley St where a private hospital is being built at the same time as NHS beds are being closed at Guy's.

The Armada was staged to draw attention to the many problems facing London's Docklands and in

PEACE IN SOUTHWARK

For half a day on Thursday the central island of the Elephant & Castle was transformed into a colourful Peace Camp. Banners were flown between trees and 'Hoot for Peace' signs on the railings produced a lively response from passing motorists. Some women played music and sang while others handed out leaflets to passers-by.

Thursday 24th May was International Womens Day for Disarmament. The women of Southwark set out to show that Peace is something that concerns us all and that Peace Camps are as relevant here as at Greenham Common.

Southwark Women were not alone in celebrating this day. In Lambeth there was a procession from Clapham Common up Kennington Road and a festival at St Mathews. Brixton.

Later members of the Southwark Greenham Womens Group attended the shareholders AGM of Rio Tinto Zinc at the Intercontinental Hotel, Hyde Park Corner! They had bought shares in the last few weeks in order to be able to attend and ask questions. Rio Tinto Zinc is involved in Uranium mining throughout the World. In Namibia, a country illegally occupied by South Africa. RTZ breaks United Nations sanctions by mining and exploiting its black workers. The meeting was also attended by 2 aboriginal women from Australia demanding compensation from RTZ for the devastation of their traditional lands

SE1 SE1 SE1

Most readers of SE1 would agree that it is a good newspaper. It provides those of us who live in North Southwark and Waterloo with news and information as to what's happening in our area.

Perhaps inevitably in the present climate of government hostility to inner city areas much of the news is concerned with our efforts to defend what we have, and our plans for the future from government attack and interference. Yet it is not necessary that SE1 should confine itself exclusively to campaigning news.

North Southwark and Waterloo have a wealth of activities which are never mentioned by the commercial press such as the South London Press and which SE1 should be the natural outlet for. Even at schools, pensioners clubs, sports centres and youth clubs amongst many others could all be featured in SE1. We could include reviews of local plays or bands and crossword puzzles to widen the interest of the paper. Equally, we could feature short stories by local people to give an outlet to all those budding writers in SE1!!

SE1 is a community newspaper and as such it should reflect all the events on our area. To do this it needs help to find out what's going on in SE1, and report on it. It needn't be a long article - just details of what's been happening. As long as its not completely libelous we'll print it (and a photo as well).

For information or advice, contact: Martin Whiteside at NSCDG on 928 0711 (Borough Community Centre, 56 Southwark Bridge Road) Keib Thomas at Morley College 928 8501 (Community Education Project, King Edwards Walk) or Dave Scott at Waterloo Action Centre, 261 1404.

Deadline for next issue: 27th June. Out on July 9th.

(Paul Wheeler)

"DEAR PRESIDENT REAGAN"

PLEASE TAKE YOUR MISSILES WITH YOU WHEN YOU GO

LONDON DEMO JUNE 9

Local march leaves CAMBERWELL GREEN 10am. Followed by rally at the ELEPHANT & CASTLE. National march starts HYDE PARK 1.00pm. 701-5800 for information.

EVENING ACTIVITIES

Evening activities are primarily organised to cater for the needs of local residents of north Lambeth and north Southwark, although some are open to non-residents.

BADMINTON:

Wednesday 7.00-10.00 Main Hall (2 Courts)

Sunday 11.00-1.00 " " " "

Open to local residents. Informal, friendly sessions, run by Ernie Hearn.

WOMEN'S KEEP FIT:

Wednesday 7.00-8.00 Gymnasium. Mixture of light exercises to get and stay fit. Open to all women. Tutor: Mr. Jim Hutchings.

YOGA: (HATHA)

Tuesday 6.00-7.30 Gymnasium. Open to all comers. Tutor: Sheila Daly.

ROLLER SKATING:

Monday 8.00-10.00 Main Hall with music and tuition by National Roller-Skating coach Mr. Sammy Samuels. Open to all over 16.

KARATE (SHOTOKAN):

Tuesday 7.30-9.30 Gymnasium

Thursday 7.30-9.30 "

Training with the Blackfriars Karate Club, open to all comers. Tutors: Tuesday, Mr. Ron Stock (3rd Dan); Thursday, Mr. Milton Johnson (1st Dan).

Use may be made of the Centre's changing and shower facilities.

WEIGHT-TRAINING:

The weight-training room is open to proficiency card holders in the evening - please ask for separate sheet on room opening times and booking procedures.

LUNCHTIME ACTIVITIES

WEIGHT-TRAINING:

Weight-training room open to proficiency card holders. Mon - Fri. 12.00 - 2.00.

(Separate sheet available for details).

WOMEN'S KEEP-FIT:

Monday 12.00-1.30. Gymnasium.

Light exercises and movement to music, with course tutor, Mrs. M. Gavriellides.

AFTERNOON ACTIVITIES

INDOOR BOWLS:

Monday 2.00-4.00 for both beginners and experienced players.

KEEP-FIT:

Monday 2.00 - 4.00

Both of the above activities are aimed at Senior Citizens, although under 60's may also take part.

NEW ACTIVITIES

Just started.....

Senior Citizens 'Singalong' Club every Thursday 1.30pm-3.30pm and 6.30pm-8.30pm all welcome.

Chess Club every Mon.& Wed. 7pm-9pm whether you're a Queen, a Bishop or a Pawn we'll be glad to have you along.

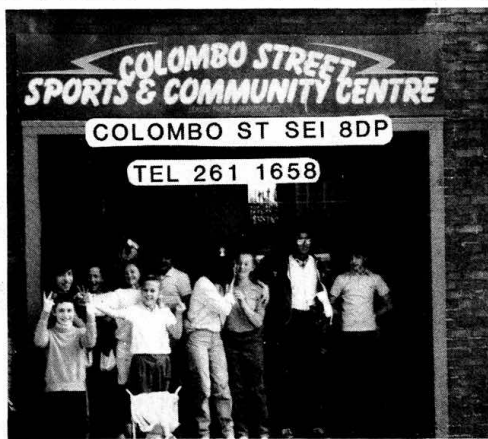
Keep-Fit (Circuit Training) - Sundays between 10am and 12.30pm.

Starting shortly.....

Throw yourself into JUDO starting Wed. May 30th 8pm - 9.30 pm

Soft Tennis begins Wednesday, June 6th - 2pm-3pm.

Senior Citizens Bowls & Keep-Fit from Thursday, June 7th 2pm - 3pm (and you can join in with the Singalong Club which takes place at the same time!)



BADMINTON:

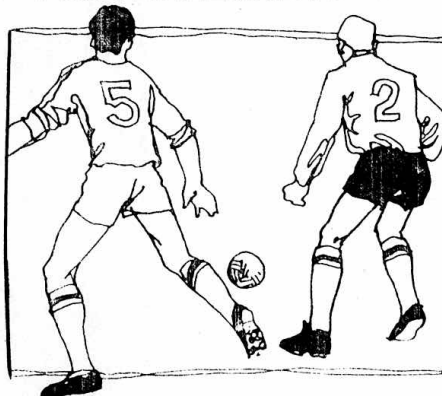
Tuesday, Wednesday, Thursday & Friday,

12.00-2.00. MAIN HALL & GYMNASIUM.

Bookings are of 30 minutes duration and may be made by telephone from 10.00 am onwards of the Monday of the week concerned.



FOOTBALL & NETBALL



Casual bookings are available on the outdoor, floodlit, all-weather Hatfields Open Space. Bookings are normally of 1 hours duration and may be made by phone from 10.00 onwards of the Monday of the week concerned and for the following Monday also.

JOGGING & ROAD RUNNING:

Use may be made of the Centre's changing and shower facilities.

WHERE WE ARE!

By underground/main line:

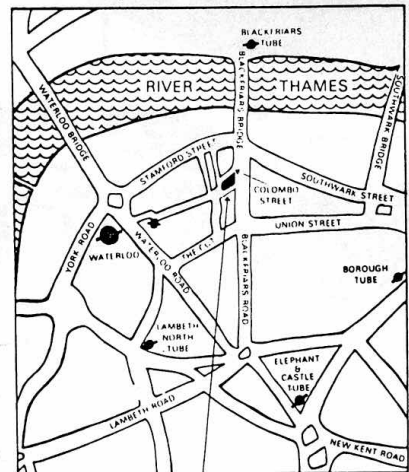
Waterloo or Waterloo East

Blackfriars

5 mins walk

By bus:

Routes 70, 76, 149: Stamford Street
Routes 68, 188, 1, 176: Waterloo Road
Routes 45, 63, 141, 151,
184, 109, 17: Blackfriars Road



YOUTH ACTIVITIES

Youth activities normally take place between 4.30 and 9.30 and are organised to cater for the needs of local residents between the ages of 5 and 18.

The Centre now has an expanding programme of non-sporting youth activities.

For further details of activities, charges and youth centre membership, please refer to separate insert or directly to the Centre's Youth and Community Worker, Ms. Ros Purcell.

MONDAY:

ROLLER-SKATING Main Hall

-under 10s: 5.00-6.15

-10s to 16s: 6.30-8.00

BOXING:

6.30-8.00 Gymnasium

Youth Social Night 12s-18s - Youth Room + Badminton etc. 8.00-10.00 Gymnasium.



TUESDAY:

Recreational Games Main Hall

Under 12s 6.00-7.45

Over 12s 7.45-9.30

WEDNESDAY:

BADMINTON - Under 18s 5.30-7.00 Main Hall

YOUTH SOCIAL NIGHT - 12s-18s - Youth Room and Badminton etc. 8.00-9.00 Gymnasium

THURSDAY:

FITNESS TRAINING - Under 18s 5.30-6.30 Gymnasium

GYMNASTICS - Under 16s 6.00-8.00 Main Hall

RECREATIONAL GAMES - Under 13s 6.30-7.30 Gymnasium

YOUTH NIGHT - 12s-16s 6.30-8.30 Youth Room

FRIDAY:

UNI-HOCKEY - Under 14s - 4.30-5.30 Hall

FOOTBALL - Under 18s 5.30-7.00 Main Hall

LADIES FOOTBALL - Under 18s 7.00-8.00 Hall

BOXING - Under 18s 6.30-8.00 Gymnasium.



DID YOU KNOW?

WE HAVE ROOMS FOR HIRE for T.A. meetings, Union meetings and a host of other things. Cost is £2.50 per hour. ALSO for parties, weddings etc. our Main Hall is an ideal venue. Special rates for local residents - £10 per hour. Contact Ros or Tom at the Centre on 261-1658.

WE RUN HOLIDAY PLAYSCHMES FOR YOUNG PEOPLE

During Easter and Summer holidays we cater for 5 - 18 year olds doing various sports both in the Centre and on the Hatfields Open Space. Day trips to the seaside are another popular activity which are enjoyed by all.

For more INFORMATION, ring 261-1658. Come And Join Us!