

SE1

NUMBER 26 15P MONTHLY. JULY '84.

SAY NO

Do you already have to walk too far to find a Post Office? And what are the queues like when you get there? If the Post Office has its way things could soon be far worse.

Despite making massive profits of £136 million last year, the Post Office wants to increase its profits further by closing some 50 Post Offices across London.

"Four post offices have been recommended for closure in the whole S.E. District", says Mr. Sullivan, Counter Manager for the South East area, "but we could not want to name these at present. These are only proposals at the moment."

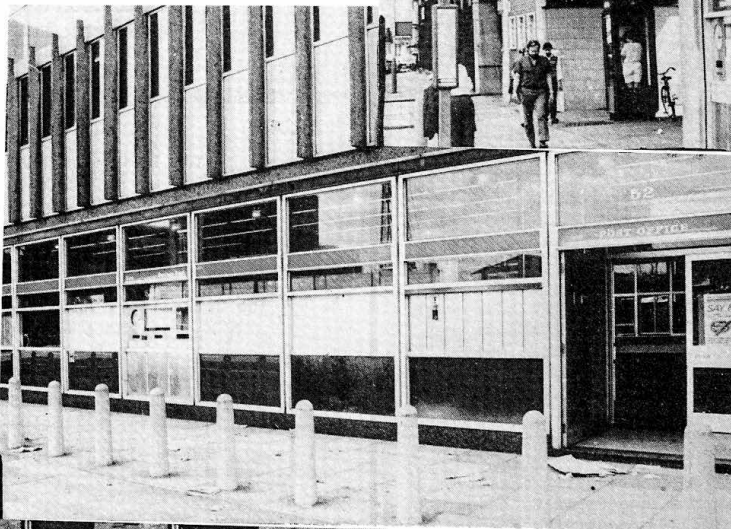
The Union of Communications Workers is less cautious however:

"We believe that three of the offices are in the SE1 area", says Moss Hailey, chair of the SE Counter and Clerical Branch. These are

Bermondsey - Bricklayers Arms
Borough High Street

and the third is either Blackfriars Road, Stamford Street or Westminster Bridge Road.

These closures if they go ahead will have severe implications for local people, particularly for the Old Age Pensioners. Many people will have to walk



"Obviously if a particular proposal produces a great deal of fuss from the local community then it is likely to be reconsidered".

The union is delighted to hear that local pressure will be taken into consideration, but Moss Hailey insists that people shouldn't wait for any official consultation:

"If you don't make a protest before the notice goes up on the post office door, then you have had it. The local branch has already collected 25,000 signatures in SE London and we now intend to step up the campaign."

What we need now is as many letters as possible from local individuals and groups".

WHAT YOU CAN DO

Write to
The Chair of the Post Office
Postal Headquarters, St Martin
le Grand, EC1A 1PQ

You can also write to the leader of Southwark or Lambeth Council and your MP asking for their support.

You should also sign the petition which is available at Post Offices and also at the Waterloo Action Centre and the Borough Community Centre.

further or pay a bus fare to get to the nearest post office only to find that they are faced with longer queues when they get there.

And the closures will not be limited to the main post offices either; a review of the sub-post offices is also being undertaken.

Mr. Sullivan stresses that nothing will happen suddenly however:

"Once final proposals have been agreed, we will write to MPs, local authorities and other groups in the areas affected and there will be a period of three months for consultation."



The local newspaper!

2 ON YOUR ESTATES

STAMFORD/AQUINAS/ CLIMSLAND TENANTS ASSOCIATION

The GLC has said that the renovation of the houses in Stamford Street are included in this year's programme of work. Unfortunately, it isn't likely to happen till next year because they're still doing last year's programme this year. Clear?

The committee are still pressing for "No through road" signs at the end of Coin Street and Duchy Street and for more resident's parking places. They also hope to reduce late night noise in the area and stop people dumping rubbish in the streets.

Tenants of Climsland House are to be asked how they would like to tackle the problems which affect their block in particular.

QUENTIN HOUSE

Quentin House parent and toddlers group is planning to open its doors again on Tuesday 3rd July. Its new opening hours are going to be Tuesdays 12-3, and Thursdays 12-3 at Quentin House, Gray St. SE1.

There is going to be a garden out the back that toddlers can play in and the group has had grants to buy play equipment and improve the Tenant's Flat. Parents living in or near Quentin House are welcome to come!

MATHESON LAING HOUSE

At the time of going to press a tenant from Matheson Laing is in the process of taking Lambeth Council to court - with the help of North Lambeth Law Centre - over her heating system. It has not worked since she moved in, over a year ago.

The block has partial under-floor heating which is very costly; some tenants get bills of more than £200 a quarter. It might even be dangerous in some cases - one tenant has had acid smells coming from under his floor.

The DHSS have recognized that the estate is "Hard to heat" and have awarded tenants extra money each week if they already get supplementary benefit. But this does not solve the long term problem of an expensive and out-dated system of heating. The outcome of the court case could be important for tenants on this and other estates with this kind of heating.

WINDMILL HOUSE TENANTS ASSOC.

Windmill House has had work on replacing their window frames completed and are in the process of having their courtyards improved. The problem is that certain changes need to be made to the plans and the workmen have already started on the site.

Confusion between Lambeth, the GLC and the tenants has led to a situation where people are not entirely happy with the work

they see going on around them.

A meeting is being organised to try and sort it out, but the problems Windmill is experiencing show how difficult it can be to visualise a scheme from drawings if you're not an architect!

If consultation is going to be useful, it needs some thought about how schemes are presented to people so that they can imagine what the scheme will look like when it's finished.

PEABODY ESTATES

Rumour has it that some tenants on Peabody Estate, Duchy Street are thinking of re-starting a tenants association.

Waterloo Action Centre say they will give advice and assistance to set up a new T.A. if it's wanted - contact Dave Scott at the centre (261 1404).

TANSWELL ESTATE.

Before I tell you about the recent happenings on Tanswell Estate, I would like, on behalf of Tanswell Action Group to thank all of you, who over the years have given your support to Tanswell in the fight for our Environmental Improvements and more recently for all the letters of support you sent to the Department of the Environment.

Some months ago the D.O.E. turned us down for our environmental Improvements on the grounds that we do not need improving, we say we do, we should know we live here, I do not know of any Tenant who lives on our Estate who works at the D.O.E. so how do they know what we need. The G.L.C. then appealed against this decision, something they have never done before, and, once again they turned it down.

We were preparing ourselves for a long fight to lobby our M.P. and meet with the D.O.E. when on the 15th June they did an about-turn and said the G.L.C. could go ahead with the Environmental Improvements for Tanswell.

As you can imagine, we were all over the moon about this, but suddenly came down with a bump when we were informed that the G.L.C. no longer have the money for this. This means the fight is still on, we need to convince the G.L.C. and the D.O.E. that we must go to the top of the list and be seriously considered for any money they are sharing out among Estates.

I have seen Estates worse than Tanswell, but our argument is if we are left much longer we will be as bad if not worse than some other Estates. We are taking legal advice to see if we can find another solution to finding the money.



MORLEY GALLERY, 61 WESTMINSTER BRIDGE ROAD, UNTIL AUGUST 31st

FREE!

MON - FRI 10-6 (to 9pm Tues & Thurs)

Cathedral Ward Branch Southwark - Bermondsey Constituency Labour Party

FIGHT TO SAVE THE GLC SAVE SOUTHWARK'S SERVICES

Visit our Stall & Exhibition at THE BORO' FESTIVAL, Mint St Open Space SATURDAY 14 JULY 1984

Meet your local Labour Councillors Alan Davis & Geoff Williams

AND DON'T FORGET

The Councillors hold regular advice sessions for you 2nd & 4th Fridays every month at BLACKFRIARS SETTLEMENT Nelson Sq SE1 7.00 - 8.15 pm

INTERESTED IN JOINING US? Then contact:- Ray Kingsbury, 1 Douglas Bldgs, Marshalsea Rd SE1 or.... SEE YOU AT THE FESTIVAL!

SHOP FRONT

The building work at the Action Centre is now finished and the information or advice you need should now be easier to find.

And they now have a BENGALI speaking adviser every Monday between 10am and 2pm.

John Austin, who now co-ordinates the advice work at the centre is hoping to recruit more volunteers to work on the

shop-front: "We do need more people to help with the advice work. We're not looking for ready-made 'experts' - what we need is ordinary people with a lot of patience and a sense of humour. People learn by working with other volunteers and there will be regular training sessions with all the volunteers and full time staff".

Kervyn Keane.

shop-front:

"We do need more people to help with the advice work. We're not looking for ready-made 'experts' - what we need is ordinary people with a lot of patience and a sense of humour. People learn by working with other volunteers and there will be regular training sessions with all the volunteers and full time staff".

In the next few months the Action Centre hopes to take the advice service out into the community - to check whether people are claiming the benefits they're entitled to. They also intend to get people together to campaign for improvements in the benefit system itself. Housing Benefit is a good example. They are months behind with people's benefit - they need more staff with better training and they need computers which work five days a week instead of two.

Along main roads and side streets there are open sites that have become rubbish dumps and could become health hazards. I believe they should be cleaned up. Some could be grassed, others could be used as allotments.

Here are some photos of some dumps in the SE 1 area. Do you recognise them?

There will be PRIZES:

1st Bottle of Wine
2nd Box of Chocolates
for the person who correctly identifies the most.

ties the most.

Send in the address of each to:
Elaine Holland
1 Strood House
Tabard Estate, SE 1.

Next month we will be highlighting the opposite - where the Council have cleaned up areas and given them a facelift.

We would like to print photos of your nearest dump or the nicest improvements near your flat. Send photos to Martin Whiteside, 56 Southwark Bridge Rd, SE 1.

UPB supermarket

Flat Iron Sq, Union St.

Try us..

for food, drink and household goods.

the cheapest shop between Long Lane and Blackfriars Rd in a recent SE 1 shopping survey.

HOUSING CO-OPERATIVE IN THE BLUE

The Housing Co-operative in the Blue (in Bermondsey) is looking for new members. If you are interested in living in a housing co-op, in shared housing please contact Nick at: 178 Southwark Park Road, SE16, or Judy at 161 Abbeyfield Rd, SE16, for an application form.

Dear SE 1.

No Hughes is Good News

Our Member of Parliament Simon Hughes, the golden boy of politics will climb on any bandwagon if it offers him the chance of a bit of publicity.

Quite recently in parliament he asked a question about the cypher clerk at the secret government communication centre at Cheltenham who was supposed to have committed suicide but was later found to have died from natural causes. Perhaps he does not know that he represents the people of Bermondsey and not the civil service.

I well remember the old days when the Liberals had the power in Bermondsey. In those days Bermondsey was not just poor it was poverty stricken, and the Liberals used to solicit charity from their rich friends to help the poor.

In fact they were good Christian people who would do anything for the poor, except change the system which made them poor, for they believed in keeping the status quo: them rich and you poor.

Look at the last election, more people voted against Maggie Thatcher than for her and yet she got the biggest ever parliamentary majority. This was due to the peculiarities of our parliamentary system, but in the marginal seats the Social Democrat/Liberal Alliance stood against the Labour Party and split the working class vote and let us in for another 5 years of Thatcherism. They knew they could not win but were quite prepared to let Mrs Thatcher back into power to preserve the good old status quo.

Sid Howard.

ASSOCIATION OF WATERLOO GROUPS
Meeting 10th July 7.00pm
POST OFFICE CLOSURES with Speakers from the Union of Communications Workers.
Plus:
VIDEO - SAVE LAMBETH SERVICES
Plus:
Usual business, reports, etc.

LABOUR
working for you locally...
TERRY RICH & KATHY CONNELLY
your LABOUR councillors
on Lambeth council
Surgery
EVERY THURSDAY EVENING 6.45-7.30
at China Walk Tenants Hall,
Lambeth Walk, SE1

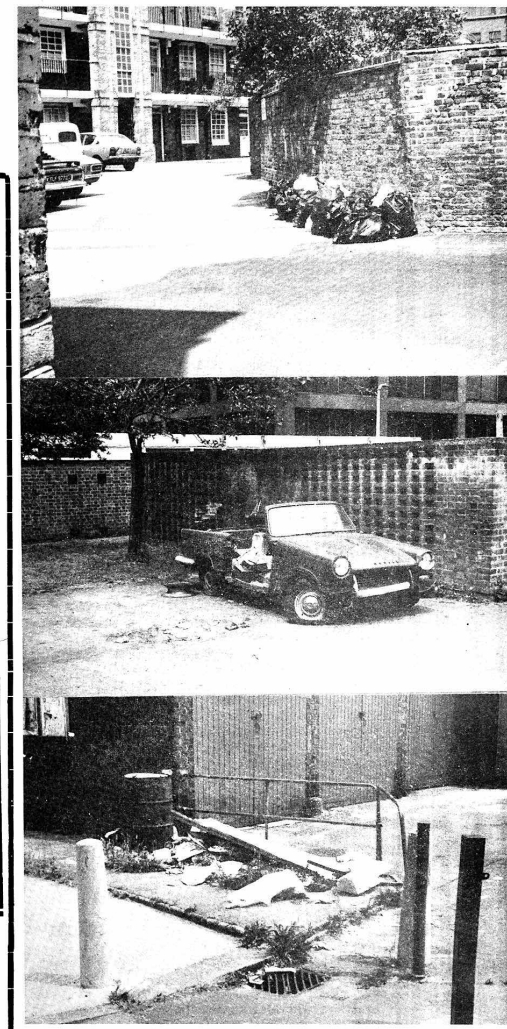
EURO-ELECTIONS - the count

by PAUL ROSEN
Everybody over eighteen who's ever bothered to vote knows what it's like inside a polling station. However, comparatively few people know what happens to their voting paper after they have folded it up and placed it in the ballot box. This is what I intend to tell you.

At 10pm the counting of the votes began. This was exceptionally boring. We could see that the turnout was as low as had been predicted - one box I saw emptied for counting contained no more than about 30 votes, out of a possible number of at least 1000 electors.

By midnight the counting had finished and we awaiting the details of the turn-out. Half the counters were paid and went home, and then panic struck; a recount began. I eventually discovered that there was a discrepancy of one vote between the number of votes and those

COMPETITION SPOT THE DUMPS 3 and win a bottle of wine



who turned up to vote.

The count was a lot more interesting than the verification. It was a much more formal affair, but there was a more exciting atmosphere, as we could actually see how the votes were dividing. They began to separate the votes for each candidate at 9pm on Sunday, and it was quite clear within half an hour who had won. The atmosphere was maintained by the presence of television cameras filming our count for ITV's live coverage, which kept us almost permanently bathed in bright white light.

By eleven the Returning Officer announced the results, which were
Total Vote - 152,000 (28% of the electorate)

Richard Balfe (Lab) - 77,661
Jim Daly (SDP) - 25,391
Doreen Miller (Con) - 46,180
Janice Owens (Ecology/Women For Life on Earth) - 3281

The lowlight of the evening came now as the candidates each made a speech. Richard Balfe was greeted by hecklers from the bad losers in the Conservative faction, and the stupid rivalry between Labour and Conservatives was brought out very clearly - I was particularly struck by Doreen Miller's statement that for her the election had nothing to do with Europe, but was about the GLC.

Jim Daly and Janice Owens both did speak about Europe, and managed to steer clear of the left-right back-biting, and the evening was over by 12.30am.

THE FIRST BOY FESTIVAL

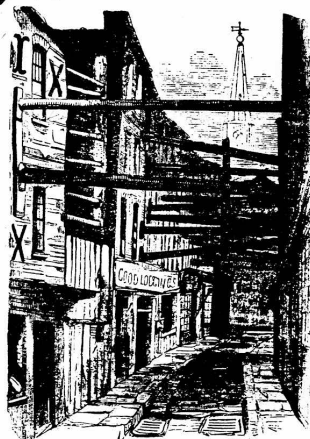
MINT ST OPEN SPACE

SATURDAY 14 JULY

FOOD FESTIVAL

BICYCLE MARKING

TOMBOLA



MINT STREET, LOOKING TOWARDS HIGH STREET.

The Mint Street Open Space has a varied history. The area is named after the old mint set up in medieval times. The land looked very different then with a maze of narrow streets and alleys providing a refuge for all kinds of criminals and debtors.

More recently the site contained the well known Evelina Hospital for Sick Children. The hospital which had 80 beds was founded in 1865 by Baron Ferdinand de Rothschild in memory of his wife, the Baroness Rothschild. It closed in 1976 when the children's services moved to new buildings in Guy's. You can still see the remnants of the walls which have been incorporated into the walls surrounding the open space along Southwark Bridge Rd.

There was also housing on the site. The Victorian tenement block Goodwin Buildings provided local accommodation of 40 flats. There was also a block of flats provided by the Fire Brigade for their employees. The London Salvage Corps had their headquarters here above which were flats for their workers. Leigh Hunt St., now closed to make room for the open space, had houses along the east side facing the hospital - these came to have a dubious reputation in the 1920's.

Most recently the Mint St. Adventure Playground was set up in 1972 on part of the site which was derelict. This has provided recreation for local children, and has since been moved further up Southwark Bridge Rd. to the other end of the site.

I came to live in North Southwark in 1968 with my husband and two small children almost opposite the Evelina Hospital which soon became my second home. Apart from the usual children's ailments (coughs, colds, etc.) my eldest boy was asthmatic and my youngest boy accident prone. So we were never off the hospital's doorstep. In many ways it was sad to see it go, but the building itself was so old and depressing. We welcome the Mint Street Open Space, site of the Evelina Hospital as a great asset to the community.

Linda Kerley



Do you remember the Evelina?

ORGANISED BY -

North Southwark Community Development Group, Borough Community Centre, Mint Street Adventure Playground, Charterhouse in Southwark and Cathedral Ward Labour Party have got together to organise the festival.

THANKS TO

We would like to thank all the local firms, shops, and organizations who donated goods or money to the Festival.

FESTIVAL

SATURDAY 14 JULY

OPENS NOON

BY 12 NOON ON SATURDAY JULY THE OPEN SPACE WILL HAVE BEEN TRANSFORMED FROM A QUIET LITTLE PARK BUZZING WITH ACTIVITY, FESTOONED IN BUNTINGS AND OF PEOPLE WAITING TO COME IN, AND THEN THE FESTIVAL.

ENTRANCE FREE

THERE WILL BE A HUGE VARIETY OF STALLS RUN BY LOCAL COMMUNITY GROUPS; TOMBOLA, ARTS AND CRAFTS, FESTIVAL, EXHIBITIONS, HOME-MADE CAKES, BRIC-A-BRAC, BINGO, ELEPHANTS, DISPLAYS BY THE FIRE BRIGADE, BICYCLE MARKING, TO NAME ONLY A FEW. THERE WILL BE CHILDREN'S EVENINGS SUCH AS 'SOAK THE VICAR', AND A VARIETY OF REFRESHMENTS.

STALLS, MUSIC, EVENTS,

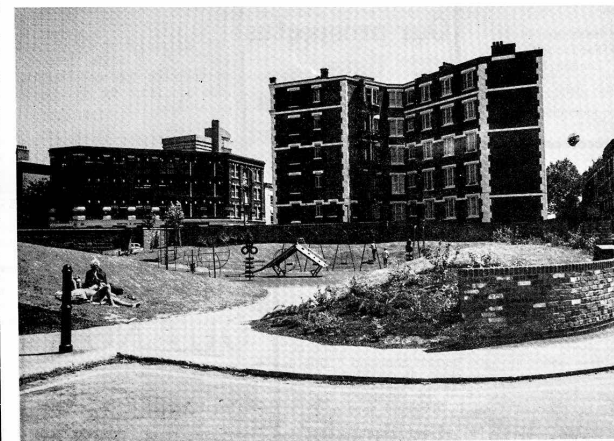
AT THE CENTRE OF ALL THESE ACTIVITIES WILL BE THE STAGE PROVIDING CONTINUOUS MUSIC AND DANCE THROUGH THE DAY. DURING THE DAY FROM 12 TILL 6 WE HAVE THE LONDON BRASS BAND, A ROCK BAND CALLED FRENCH, THE PEOPLE'S THEATRE, AN AEROBIC DISPLAY, IRISH DANCING, YOUNG PEOPLES' THEATRE AND MANY OTHER ACTS.

7 TILL LATE EVENING DANCE'

IN THE EVENING FROM 7 TILL LATE THE FESTIVAL WILL TAKE ON A COUNTRY AND WESTERN FLAVOUR. A COUNTRY BAND - JAKE - WILL ENTERTAIN US WITH THEIR MUSIC. JOIN IN TOO, BECAUSE BY THIS TIME THE STALLS WILL BE CLOSED AWAY AND THERE WILL BE PLENTY OF ROOM FOR A BARN DANCE. IF YOU ARE TOO ENERGETIC DON'T WORRY THERE WILL BE PLENTY OF LIQUOR AVAILABLE FROM YOUR LOCAL PUBLICATION IN THE BEER TENT.

ENTRANCE FREE

ALL THAT'S LEFT TO SAY, IS COME ON THE DAY, ENJOY YOURSELVES AND HOPE FOR GOOD WEATHER.



When the Evelina Hospital closed and the rest of the Mint Street site was derelict, local people were determined to develop the site for community use. An adventure playground was started on part of the site in 1972.

In 1982 Southwark Council built new premises for the playground along Southwark Bridge Road and started to landscape the site. This was completed in 1983 with help from the GLC's Community Area's grant.



Mint St Adventure Playground Fete - 1974

SOUTHWARK BRIDGE ROAD / MARSH LSEA ROAD - SATURDAY 14 JULY

MUSIC

DANCE

CRAFTS

STALLS

BINGO

THEATRE

5 JOB

Docklands Community Poster Project

PART TIME WORKER needed to put up photomurals and do other practical work on the project. Head for heights and own car/van essential. Photographic skills an advantage. Post for 2 days per week or equivalent. (Unfortunately, post can only be guaranteed until 31st March 1985).

Salary: £3,600 pa

Please write for details: Unit 167, Cannon Workshops, West India Dock, London E14

Closing date: 20th July

We are an equal opportunities employer.

A STORY.

NOT SO SILLY!

Billy Burton was a nice young lad of 10 years of age, the doctor said that he was retarded, his mother said that he was a bit backward, and the neighbours said that he was plain daft, all his schoolmates called him Silly Billy.

Now it so happened that on that particular Friday afternoon, Billy was at Pages Walk School and was returning to his class after a visit to the toilet and as he walked along the corridor past the headmasters office and staff room, he saw a thick envelope lying on the floor so he picked it up and put it into his pocket.

Later that afternoon when he got home he gave the envelope to his mother, and said he found it at school. Mrs Burton tore open the flap of the envelope and saw the thick wad of notes inside. She turned to Billy and said "go out and play, I will call you when your tea is ready".

Mrs Burton put the envelope away and slipped out through the back alley, to avoid Billy playing in the street. She went round to the sweet shop in Tower Bridge Rd and bought a couple of dozen little chocolate animals which were wrapped in bright coloured silver paper.

She returned to the house and went out to the back garden, it was not really a garden, it was about 4 square yards of bare earth, but growing at the back against the wall was this creeper bush which straggled up the wall.

She went to the bush and with the aid of pieces of cotton, tied the chocolate animals to the bush till it looked like a christmas tree.

She then called Billy in to have his tea, he was 1/2 way through his meal when he looked through the window and saw the brightly coloured chocolate animals sparkling in the sunlight.

He jumped up and ran outside into the garden and all excited he shouted "Mum, Mum come out here and see what has grown on our tree. His mother came out into the garden and said "this is a magic chocolate tree, go on pick one of the chocolate animals and eat it, they are very nice".

Once he had overcome his shyness Billy settled down to strip the tree and eat all the chocolate animals and then went out to play. Mrs Burton returned later and gathered up all the silver paper wrappings from the chocolate animals and washed them down the toilet.

This was in the 1930's and there was no way that 50 pounds could be lost without a major enquiry and so on Monday morning the headmaster accompanied by a police sergeant toured the class rooms asking whether any boy had found the envelope or had seen any other boy pick it up.

When they got to Billy Burtons class, Billy immediately put his hand up and shouted "I found it and I took it home to my Mum". The Police Sergeant took Billy home and asked Mrs Burton about the envelope, he was a kindly man and said that if the envelope was returned intact then that would be the end of the matter.

Mrs Brown said "No I have never seen any envelope, you know that he is a bit backward, he never gave me anything". Now Billy who had been listening shouted out "Yes I did give it to you, don't you remember, it was on the day that the chocolate animals grew on our magic chocolate tree".

Billy took the policeman into the garden and showed him the magic tree, Mrs Burton said to the policeman "he is a bit backward you know" and she touched the side of her head.

The policeman said I understand, I am sorry to have troubled you" and left the house.

Sid Howard.



THE LONDON SCHOOL OF FOREIGN TRADE

The school offers full-time courses leading to the award of:

- Diploma in Shipping
- Certificate in Shipping
- Diploma in Business Studies
- Diploma in Business Organization and Administration
- Advanced Diploma in Business Studies

The London School of Foreign Trade (KL) (At Morley College), 61 Westminster Bridge Road, London SE1 7HT Tel: 01-928 6810 Telex: 888941 LCCI G Attn LSF

- International Trade and Distribution Certificate
- Certificate in Commerce
- Certificate in English
- Certificate in Business Organization and Administration
- Intensive Business English Course

INTERESTING JOB:

Job security we can't guarantee but an interesting and varied work programme we can! A part time worker is being sought, with some local experience and ability to type, to work with local dockland groups.

A commitment to the docklands and its development for the local community is more important than formal qualifications.

Find out more by ringing: Joint Docklands Action Group on 480-5385.

Closing date 20th July.

JOB

OUT NOW!

MORLEY COLLEGE
Westminster Bridge Road

JOHN HARVARD
Union Street

LONDON NAUTICAL
Stamford Street

KING EDWARD WALK
COMMUNITY BUILDING

WEST SQUARE
St George's Road

JOHANNA
Johanna Street, Lower Marsh

FREE!

OUR KEN, WHAT AN ANGEL!

'CITIZEN KEN' John Carvel.

Chatto & Windus £2.95

Reviewed by Kervyn Keane
His background is not much different from thousands of others born in post-war London, and I couldn't pinpoint just when it was he decided to take on the world and damn the consequences, but he's having a go and he's determined to win.

One of the things that comes over clear in the book is THE MAN IS A CHARMER - I don't think there is one person in London under the age of seven who doesn't know who Ken Livingstone is, yet many could not tell you who the last Leader of the G.L.C. was.

'Citizen Ken' does not give all the answers, it can't, the questions haven't yet been asked. But I did find it enjoyable reading and I could have read more, I did feel when I reached the end as though the book was not finished, as if there was a chapter missing. Perhaps there is, I think the best time to have written this book would have been in 1986, by that time we will have the answer to one question on the G.L.C. - to go or not to go.

Perhaps John Carvel will write the next chapter on "Red" Ken, I don't think anyone else would do it as well as he could.

'Citizen Ken' was good reading for a quick insight to the man himself, and I will look forward to seeing the next episode on the bookshelves.

GARDENING

WITH KEIB THOMAS

Photographs by Peter Simmons.

DANGER S.E.I. CATERPILLARS!



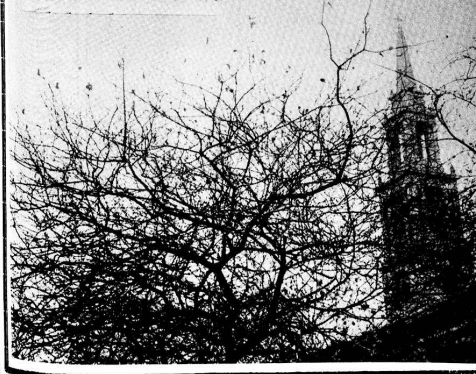
S.O.S. TO GLC!!!!

Can the GLC save us? There's a plague of caterpillars in SE1, from Lower Marsh to Rotherhithe. The Borough Councils from Richmond to Greenwich are hopelessly under resourced to deal with this menace of the moth. They are everywhere, Tabard Estate, Jamaica Road, Marshalsea Road, Copperfield Street, Blackfriars Road, St. John's Church Yard Waterloo, Frazier Street, etc. etc. Council workers, who have naturally given priority to school yards, play centres and such projects, have found themselves off work with the rash.

Clearly something must be done on a South London scale if our trees are to be protected and our people saved from very painful rashes and distress. Children and pensioners have been particularly vulnerable, along with anyone trying to deal with the caterpillars directly. It was suggested to me in Waterloo that the DoE, GLC, Forestry Commission, and the Borough Councils should get together and formulate a

strategy to deal with this painful problem. Without a systematic approach we may end up having this moth caterpillar in London for good. That would be bad news indeed, for our health and for our environment's sake, something must be done.

The photograph below shows the hawthorn (they were brilliant crimson last autumn!) in St. John's Churchyard absolutely bare of leaves. This is exhausting the tree, if it does not die of starvation then it will be more prone to disease or fungal attack. It now appears as if the first brood of caterpillars is about to pupate and quickly transform themselves into moths which will lay even more eggs. These will hatch in August and munch their way up to the time the leaves fall in autumn. After lying snug in their triangular web at the top of the tree all winter, even more caterpillars will emerge to munch our much loved trees and give our children more painful rashes. Let's have some action on this, the GLC may be our last hope!



JACOBS ISLAND.

JACOBS ISLAND by Davina Connor

When I undertook to write an article for SE1, I was presented with some slight difficulty. Being something of a newcomer and an inhabitant of the furthest North-Easterly borderlands of this great postal district, the question which surfaced and resurfaced in my mind that day going home on the upper deck of the 188 was this. Of what, what what should I write? It was a warm evening indeed as I stepped down from the bus at the corner of Jamaica Road and Dockhead and made my way up the winding stairs to my little dwelling. Once indoors I threw open the windows and slumped into the nearest armchair, the cool breeze, visible in the net curtains, soothing my fevered brow. But my unwinding was hindered. Kids were playing in the courtyard below; singing, bellowing, yelling, crying. Birds were singing from the treetops and rooftops above. Helicopters and Boelings roared across the sky.

Another sound then filtered through to my ears. A sound from outside, somewhere down below - the sound of running water. "Has it begun to rain?" I wondered, and peered out of the window. It had not. No trickle of water was this, but a gushing torrent. And it was down below, beneath the cracks in the pavement, under Dockhead.

I resolved to learn more of what lies behind the facade of Dickens estate and Mill St., of Jacob St. and Wolsley St., of Parkers Row and Dockhead, Of St Saviour Wharf, New Concordia Wharf and Bermondsey Wall West.

I set off for the Local Studies Library in Borough High St., there to discover something of the history of my street, and also (as it turned out) to satiate my appetite for blood-curdling tales of Bygone London. The Librarian was most helpful and soon I was knee-deep in the rotting slime of Folly Ditch, a particularly nasty open sewer which once had flowed where now stands Dockhead.

Long ago a small river called the Neckinger had flowed here from the hills of Sydenham and Nunhead to the Thames. Here had been part of the estates of the medieval Bermondsey Abbey. And many other happy events had occurred here. But by the middle of the nineteenth century it had become perhaps the worst pit of misery in London. Charles Dickens used it as the setting in Oliver Twist where Fagin and the Artful Dodger had their den and where Bill Sykes met his end.

This interesting description of Jacobs Island as it was in the nineteenth century is from "Alton Locke" by Charles Kingsley, a work dealing with the Chartist movement of 1838. "Abandon all hope, all ye who enter here"

"... The light of the policeman's lantern glared over the ghastly scene - along the double row of miserable house-backs, which lined the sides of the open tidal ditch - over strange rambling jetties, and balconies, and sleeping-sheds, which hung on rotten piles over the black waters, with phosphorescent scraps of rotten fish gleaming and twinkling out of the dark hollows, like devilish gravelights - over bubbles of poisonous gas, and bloated carcasses of dogs, and lumps of offal, floating on the stagnant olive-green hell-broth - over the slow sullen rows of oily ripple which were dying away into the darkness far beyond ..."

At about this time there was a ferocious cholera epidemic in London, and nowhere was worse effected than Jacobs Island, with its filthy ditches, which served as drinking water and bathing water as well as being the common sewer filled with everything putrid. It was likened as to a Flemish street, flanking a sewer rather than a canal. It was called the Venice of Drains, with its multitude of rickety little bridges and wooden houses whose rooms extended over the dark waters.



Another passage from Kingsley's book goes like this. "... the neighbourhood was undergoing, as it seemed, 'improvements' of that peculiar metropolitan species which consists in pulling down the dwellings of the poor, and building up rich mens houses instead; and great buildings, within high temporary pallings, had already eaten up half the little houses; as the great fish, and the great estates, and the great shopkeepers, eat up the little ones of their species - by the law of competition, lately discovered to be the true creator and preserver of the universe.

There they loomed up, the tall buldies, against the dreary sky, looking down with their grim, proud story visages, on the misery ..."

I was thinking to myself, "not so different from today, is it?" Hah! So now, as I walk over Dockhead, and around Jacobs Island, and as I hear the rushing water beneath the covered manholes, I feel conscious of the ghosts of the place - the ones who, for their sins, had found their way to what was the worst pest hole of nineteenth century death and disease. It could truly have been said of Jacobs Island,

GOOD NEWS!

ST. OLAVE'S HOSPITAL SET TO STAY OPEN!

Bowing finally to public pressure health chiefs rejected proposals to sell any of the 7 acre site on which St. Olave's has stood for 250 years. This represents a significant battle won by the St. Olave's Hospital Campaign and the North Southwark community.

Lewisham and N. Southwark Health Authority is intending that St. Olave's be used for essential health care for the elderly, the physically and mentally frail and the improved Chaucer. Whilst this represents a major step and these proposals

still don't adequately satisfy the urgent health care needs of the area.

The Campaign, therefore, continues to fight for proper health provision, including the return of the desperately needed out-patient clinics and low technology care for the terminally ill. We are also negotiating with the London Borough of Southwark to ensure that the whole of the site is put back into productive use for the benefit of local people.

For more information about the St. Olave's Hospital Campaign, contact the Rotherhithe Community Planning Centre 231-0916.



ITS CON

9 beds cut from Guy's and Lewisham Hospitals have not money as expected. Instead nursing beds have been more intensely which has the same. What it has is greater patient inconvenience, people discharged too and more overworking by

now is feared is even larger to try and make the savings made by Government. The sound of this will be discussed at the next District Health Authority (DHA) meeting on 23rd July. The meeting is to the Public and is held in the Dining Room, Guy's Hospital at 5pm.

DHA will be discussing their site strategy which is

believed to include closing first New Cross and then Hither Green. The situation is complicated by the fact that 2 things are happening at once. One is a cut in the money available to the Lewisham and North Southwark Health District which is deplorable. The other is a shift in emphasis away from acute care to 'Priority Care' for vulnerable people in the community which should ultimately be of benefit to local people. These two issues should not be confused.

The Chairman of the DHA, David Berryman has been moved to the North Thames Region. There are fears that he may be replaced by a Thatcherite hardliner.

The DHA in May decided not to spend money renovating the private wards in Nuffield House, Guy's which will mean they will eventually close. This is one small victory in the battle against privatisation.

ON KEW

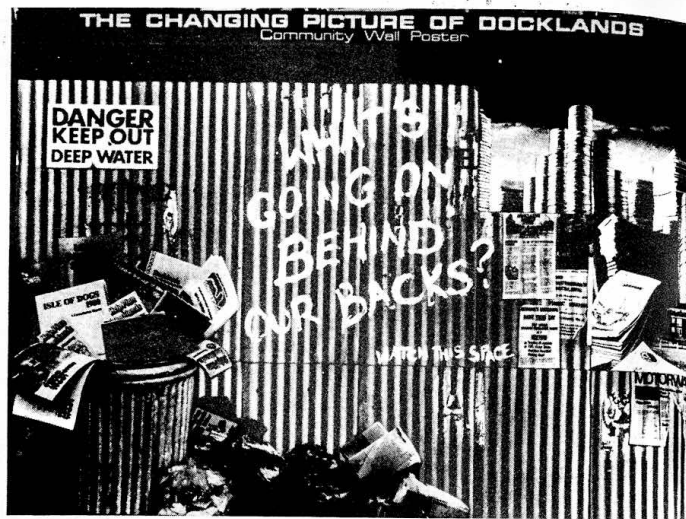
Waterloo Amenities Group are organising a boat trip to Kew Gardens on Monday 6th August. We are hiring our own boat to be sure of places during the summer rush.

Tickets cost £2 for an adult, £1 for a child, nothing for under 3's and are available from Waterloo Action Centre. Come and have a day out! Our last boat trip to Richmond was a great success.

The trip will leave Westminster Pier at 10.30 am and will arrive back at 5.30pm.

Mint Street Adventure Playground Association

Want to see us on our stall at the BORO' FESTIVAL on St Green 14 July... and don't forget we will be repeating our very successful SUMMER PLAYSCHEME during the school hols. Eng Anthea, Gary and Michael for more info. Tel 403 3747



KEEPING POSTERED

Waterloo residents may have noticed an advertising hoarding with a difference appear recently next to 'The Good Loaf' in Cornwall Road, near the Bus Station. It's called 'The Changing Picture of Docklands'. And it means what it says! It WILL change over the weeks as parts of the picture are replaced to convey its message.

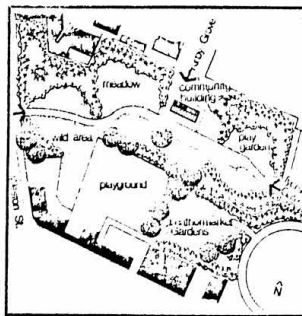
The Poster is the idea of the Docklands Community Poster Project, and illustrates the struggles

of the residents of London's docklands to improve their life, whether at work or at home, in the face of 'Big Brother' (The London Docklands Development Corporation and its friends in the property companies and big business).

Why not pop along and take a look at it? If you miss one version of it, don't worry, there is a small notice board next to the main poster giving a smaller version of what has gone before.

GARDENS

Three years after the idea was first suggested by local residents, the Leathermarket Gardens Community Building is due to open at the beginning of September.



The building - a joint venture between Southwark Council and the GLC who each contributed just over £50,000 - is designed for use by residents in the immediate area. It is a single large room, 30 ft. by 20 ft., with kitchen, toilets and storage space, and stands in the new Leathermarket Gardens open space just behind Snowfields School.

The building will initially be managed by Southwark Council, but the idea is for local people to take over the running, and for this reason a meeting was held at Snowfields School on June 18th. About 25 people attended the meeting, including representatives from Tanners Tyers and Whites Grounds, Crosby Porlock and Lockyer, and Kipling Tenants Associations. The

next stage is for the Council to invite people to a meeting to sort out how the local management committee will be set up, and what responsibilities it will have.

The Council officer supervising arrangements for the building is Doug Brown of the Planning Department, and if you have any queries he can be contacted on 703-6311 ext. 2327.

join us

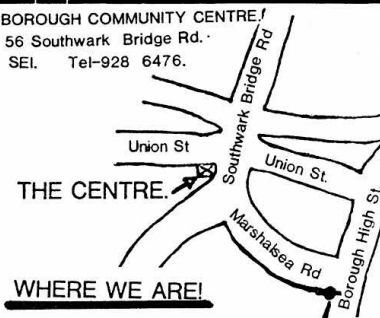
'SE1' is the mouthpiece for the local community, and is run entirely by volunteers. Why not let us know YOUR news and views - we welcome responses to articles in 'SE1', or if you have a particular interest, why not write your own piece?

You can help with 'SE1' in many other ways, and you don't have to give a lot of time or be specially skilled. Why not get in touch and find out more? Contact Keib Thomas at Community Education Project, Morley College (928 8501) or Martin Whiteside at NSDCG on 928 0711.

The next issue will be a double one for August and September, and should appear on August 6th. The deadline is Wednesday July 25th. Contributions to Keib or Martin or to the SE1 office at 12 Meymott St, SE1

BOROUGH COMMUNITY CENTRE.

BOROUGH COMMUNITY CENTRE!
56 Southwark Bridge Rd.
SE1. Tel-928 6476.



WHERE WE ARE!



PLEASE CALL IN FOR A CHAT,
WE CAN TELL YOU MORE
ABOUT THE CENTRE AND
WHAT IT CAN OFFER YOU.

LINDA & SHIRLEY

YOUTH CLUB 7p.m.-9.30p.m.

Tues. OR Thursday.

The Youth Club meet at the Centre every Tuesday (under 14s) and Thursday (over 14s) night. Why not come along and see what's going on.

We would also be very happy for local parents to become involved in the club, maybe helping with the sessions or even organizing themselves into a management committee helping to run the club in that way. If you're interested come along and meet the workers; Rita, Len, Pete, & PJ.

WE
HAVE
SOME-
THING
FOR
ALL
AGES



BOROUGH CENTRE NEWS

Recently Southwark Council gave us a grant to rewire the building and completely renovate the top floor, which was derelict. We now need your views and ideas on what we should do with the top floor, for instance;

Are you interested in forming a photography club?

If you are unemployed would you be interested in helping to form an unemployment group? What about coming to a carpentry workshop?

If you are a woman would you be interested in forming a slimming group/health group? How about planning for retirement? Are you a member of a Tenants Association and need a space to meet in every month? Are you a mother with young children who would like to get together with other mums to form a club?

If you are interested in any of these suggestions or have any other ideas then contact Shirley at the Centre on 928 6476.



PENSIONERS' POP-IN

The POP-IN is open Tues and Fri, 11-2, for the sale of tea, coffee and snacks. There are daily papers. TV & video and popular games available. Everyone over 55 is very welcome.

SHIRLEY & LINDA

PROGRAMME OF REGULAR GROUPS AND ACTIVITIES THAT YOU COULD JOIN AT ANY TIME.

Monday - Keep fit (aerobics) from 1-2pm. If you're interested come along five minutes before the class begins and see Yvonne who teaches it. In the evening we have Lancelot Andrewes House, the resettlement unit for men using the hall. They run a weekly social club.

KEEP FIT.

Tuesday - The pensioners' pop-in runs from 11-2pm, anyone over 55 is welcome. Youth club in the evening for under 14s. **POP-IN!**

Wednesday - Arts and craft from 2-4pm. This is a lively group which produces some lovely things. Doesn't matter if you are a complete beginner, you would be amazed at what you can make. In the evening we have our weekly bingo session from 7.15-9.00pm, come along and meet people. **BINGO!**

Thursday - Keep fit 1-2pm. North Southwark Pensioners' Action Group (NORSPAG) meet every other Thursday from 2.30-4, they take on issues which affect the over 55s and have been very successful, particularly over pavement parking. Youth club in the evening for over 14s.

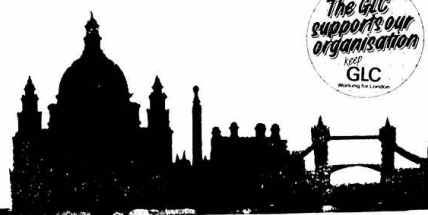
Friday - Welfare rights advice session from 10-12. Its run by workers from Blackfriars Advice Centre and has proved very successful. They will help you with any problems such as legal, housing or DHSS problems. Pensioners pop-in from 11-2pm. **NEED ADVICE?**

Saturday - Traditional Irish dancing for children. A very friendly and lively group which meets from 12-2pm.

Sunday - Activities '81. This is a social club for pensioners that organises various outings and events. Come along for a game of cards, cup of tea and a chat. The group meets from 4-6.30pm. **SOCIAL.**

FOR HIRE!

The large main hall is available for hire at the weekend for socials and weddings etc. Its also available at other times ie some afternoons, for childrens' parties. For details contact Linda or Shirley at the Centre on 928 6476.



The GLC supports our organisation
GLC

THE BOROUGH COMMUNITY CENTRE IS GRANT AIDED BY THE GLC & LBS