

SE1

ISSUE 28

Christmas 1984

FREE! FREE! FREE!



Doreen Ramsey meeting The Queen!

See story - page 2

SE1 NEWSPAPER IS FREE AT LAST!

Welcome to the Christmas edition of SE1. As well as being a bigger size with more stories and local interest it's also FREE!! In fact it's not just a present for the festive season as we intend to continue in the New Year providing up-to-date local news and views in S.E.1 free of charge.

S.E.1 has been in existence for over ten years and we are undertaking a major new development. We've increased the number of copies to 2000 and intend to make it widely available throughout S.E.1. Part of our support will come from the two neighbourhood councils for S.E.1. North Southwark Community Development Group and the Association of Waterloo Groups. Some will also come from local firms and organisations advertising to a much increased readership in S.E.1.

S.E.1 has always been the only local paper for our area, keeping everyone up-to-date with the local news and highlighting the campaign for homes and jobs for local people. We also intend to bring back the tradition of featuring local people and their news - weddings, births, moves and sometimes sadly deaths. We'd like to hear from the local groups and schools in SE1 with details of their events and achievements.

Remember S.E.1 is the paper for your area. In the future its going to be bigger and better Watch this space

Want to help. Why not ask your local shop/pub or group to put a regular advert in S.E.1. With over 2000 issues its the biggest monthly circulation in so its the easiest way to get in touch with lots of people. For further information on advertising rates contact Gerry Vignola on 928 0711.



2 WHAT'S ON for Christmas

ROYAL VISIT TO WATERLOO

On November 2nd, probably the richest person in the land met some of the poorest at the opening of the converted crypt of St Johns Church next to Waterloo Bridge roundabout.

Queen Elizabeth was making a return visit to the church which she re-opened after the War in 1951, in connection with the Festival of Britain. This time, money has been raised from a variety of sources for a purpose of more use to local people. As well as the Crypt now being the permanent home for the North Lambeth Day Centre and its work with the single homeless, it will be available in the evenings and weekends for community use.

Day Centre attendees and representatives of local groups met the Queen while she toured the converted premises. It was a very relaxed and informal atmosphere. Fred Miller was introduced as 'Mr Waterloo' and Doreen Ramsay as his female counterpart. The Queen was obviously interested in the work of the Centre, and according to remarks made by her security men, at her most relaxed for a long time. Indeed her personal office rang up in the afternoon to say how much she had enjoyed the morning.

Tony Phillips, chair of the Association of Waterloo Groups, made the introductory speech before the unveiling of the plaque commemorating her visit. In it, he pointed out the key role the GLC and local councils had played in funding the scheme, and what a disaster the threats of rate-capping and abolition would be to the community of Waterloo and the users of the Day Centre. He

WATERLOO

also recalled one of the first meetings in Waterloo years ago to discuss the idea of having the Day Centre in the area, and the large amount of hostility it encountered at the time. The community and the Centre have gone on from there, and hopefully will work well together in the joint use of this very pleasant and useful space.

Meanwhile, upstairs other local people were no doubt getting a bit impatient for the service of dedication to start. Tony's speech could hardly be described as too long: it was the Queen taking twice the time as expected in touring the crypt which led to the delay of something like 45 minutes. But equally as certain, many people thought the wait worthwhile, and there were still more crowds outside, waiting to cheer the Queen on her way.

For once, the security was fairly unobtrusive, at least in the Crypt. Her next public engagement was the opening of Parliament: it seems they trust MPs less than Waterloo residents, as the security for this was extremely tight! And photographers for 'SEI' and 'Skipper' community newspapers also managed to get round what is known as the Royal Rota, which supposedly limits the number of press photographers accompanying the Queen to just two.

Watch this space for further information on how your group can make use of the Crypt.

COOPERS NATURAL FOODS



MERRY XMAS TO ALL

WHOLE FOODS, HERBS, SUPPLEMENTS,
TAKE AWAY LUNCH SERVICE.

17 Lower Marsh, SE1. tel 261-9314

American STUDIO Six Brasserie

On the South Bank

opposite L.W.T. and minutes from the
National Theatre and Waterloo Station.

Cocktails, Beers and Great Food

e.g. Hamburger • Chilli Burger • Southbank Sizzler •
Lasagna • Salads

Reservations 01-928 6243
89 UPPER GROUND LONDON SE1
Facilities for Private Parties

Christmas 1984

PARISH OF WATERLOO

WISHES YOU A VERY HAPPY & PEACEFUL CHRISTMAS
& A PROSPEROUS NEW YEAR

& invites you to celebrate the birthday of
Jesus at a Christmas service:

CHRISTMAS CAROL SERVICE 6.30 PM Sunday 23rd
December in ST ANDREW'S CHURCH, SHORT STREET.

MIDNIGHT MASS 11.45 PM Monday 24th December
Christmas Eve in ST JOHN'S CHURCH, WATERLOO RD.

CHRISTMAS MORNING HOLY COMMUNION 10.30 AM
Christmas Day in ST ANDREW'S CHURCH, SHORT ST.

CHRISTMAS FAMILY SERVICE 11.15 AM Christmas
Day in ST ANDREW'S CHURCH, SHORT STREET.

WHY NOT GO TO THE LIVE THEATRE THIS CHRISTMAS ?
Your local fringe or alternative theatre
offers first class entertainment at low low
prices:

PINOCCHIO for 4 - 12s presented by the
Upstream Children's Theatre. 2.30 pm
28th & 31st December & 1st, 3rd & 4th January.
2.00 pm & 4.30 pm 29th December & 2nd & 5th
January. Children £1.50, adults 2.50.

THE LONG & THE SHORT & THE TALL by Willis Hall
presented by Operating Theatre Company
7.30 pm 18th - 22nd & 27 - 29th December &
1st - 5th January. £3.50 (Children & conc
£2.50) including membership. An exciting
Second World War adventure set in the Malaysian
jungle. "...gripping production which should
not be missed." Time Out

THESE SHOWS ARE AT THE UPSTREAM THEATRE CLUB,
St Andrew's Church, Short Street, SE1.
BOX OFFICE 01-928 5394 anytime. Telephone
booking accepted. BOOK NOW to avoid last
minute disappointment!

BARLEY MOW HEALTH CENTRE

WHAT WE OFFER

MONDAY

9.00am- 5.00pm Community Dental Service
Appointment needed: Tel: 928 5921
11.00am-12.30pm Bengali Womens Group *বাংলা মহিলা গ্রুপ*
5.45pm- 7.45pm Family Planning Clinic
No Appointment needed

TUESDAY

9.00am-12.00pm Community Dental Service
(See Monday)
9.30am- 4.30pm Chiropody
Appointment needed: Tel: 720 6551,
ext 44. On Tuesday Tel: 928 5921
7.00pm- 8.00pm Community Counselling Service
No Appointment needed (call in)
(or ring Tel: 928 5921)

WEDNESDAY

9.00am- 5.00pm Community Dental Service
(See Monday)
10.00am-12.00pm Waterloo Pensioners Health Group
2.00pm- 4.00pm Well Baby Clinic
No Appointment needed
2.00pm- 4.00pm Social Worker at Clinic
2.00pm- 4.00pm Welfare Foods
2.00pm- 4.00pm Toy Library

THURSDAY

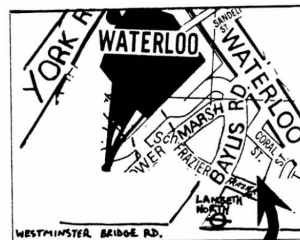
2.00pm- 4.00pm Health Checks for Elderly
Please make appointment at the
Clinic when open or at Waterloo
Action Centre Mon-Fri 10.00-2.00pm

FRIDAY

10.00am-12.00pm Open Session for Parents and
Parents-to-be with Health Visitor



The Barley Mow Users Group is an initiative set up by the Waterloo Health Project. It is a regular meeting of workers at the clinic and people from the community. The meetings have discussed the services at the clinic, how they can be improved, how provision at the clinic should be expanded, e.g. through the group the over 60's Screening Clinic was established. In this present climate of cutbacks in the Health Service the group is campaigning to maintain the services at the clinic. Recently the Family Planning Session was threatened with closure. It has been saved for now but we must ensure we don't lose any health services in the area. We need more people to join the group. There are lots of ideas of what might be provided e.g. stop smoking group, Well Woman Clinic, Health Information and many more. The Barley Mow Group provides an opportunity to discuss these with health workers, but we need your views and help to get them. If you are interested to join the group or give your views - please contact Anne or Katrina, Waterloo Health Project - 633-0852 or call into Waterloo Action Centre.



WHERE WE ARE!

FOR MORE INFO.-



Visit or ring Barley Mow Clinic, Greet House, Frazier Street, tel: 928 5921
or ring Community Health Services, 1.00pm - 5.00pm, on 720 6551
or ring Waterloo Health Project on 633 0852

4 SUPPORT FOR PLAN

After twelve years of hard campaigning we are now almost over the last hurdle with regard to getting a local plan for North Southwark that caters for the needs of the local community.

The inquiry into the North Southwark Plan has just ended, having lasted six weeks. The plan bans further office development and instead states that what land remains must be used to meet the housing, employment and other needs of the local community.

Although the plan received wide spread support there were objectors, notably the office developers and the London Docklands Development Corporation, who alone took up three weeks of the inquiry. This opposition was countered by a strong show of local support, particularly at the evening meetings which were well attended, the first at Millpond Tenants Hall was attended by 200 local people. Several local groups took part and representations of support were made by Groups including, the North

Southwark Community Development Group, the Association of Waterloo Groups, Coin Street Action Group, Rotherhithe Community Planning Centre, Southwark Trades Council and the Borough Community Centre.

Now that the inquiry is over the Inspector is writing his report and is expected to publish it early in the new year. Southwark will then consider the inspectors comments and possibly amend the plan, they will then move to adopt it as the formal plan for the area. This will represent a culmination of a long determined campaign by the local community for planning policies that put the local people first, not the office developers.



Merry Christmas To All from Glyn & Lynn (TOMS)

OPEN UNTIL 8pm MONDAY-SATURDAY
7pm SATURDAY
1pm SUNDAY

- fresh milk daily
- newspapers
- all groceries & provisions
- frozen foods

- video rental
- hot snacks, rolls & sandwiches to take away
- cut price cigarettes and tobacco

WINES, SPIRITS & BEERS

137 Southwark Bridge Road, SE1 Support Your Local Shop

BERMONDSEY COMMUNITY MINIBUS PROJECT

SENDS ITS WARMEST CHRISTMAS AND NEW YEAR GREETINGS TO ALL SE1 READERS AND MINIBUS USERS

Enquiries: Gerry 928 0711

GLC funded

Borough Community Centre

WISHES A HAPPY CHRISTMAS TO THE PEOPLE OF S.E.1

We hope that those people who used the Centre in 1984 continue to do so in the New Year. If you're new to the area or just want more information about what goes on at the Centre ring Linda or Shirley on 928 6476.

Best wishes from Shirley and Linda and the Management

Campaign for Homes in Central London

SEASONAL GREETINGS

to all residents in North Southwark /Waterloo

The Riverside belongs to the PEOPLE of London - not speculators. Here's to success for COIN ST. and the COURAGES SITE development in 1985.

For more information about the work of CHICL, please contact: Tim/Oona or Peter at 5 Dryden Street, WC2 (240 2430)

LAMBETH MEETS WITH TENANTS

Council tenants in the Waterloo area will have a chance to tackle councillors and housing officers at a public meeting this Monday evening (10th). Hazel Smith, the Chair of Lambeth Housing, will be at the Action Centre at 7.30pm, along with local councillors Terry Rich and Kathy Connelly, to answer questions on issues such as repairs, allocations and car parking on estates.

This meeting was organised by tenants representatives and local councillors as a follow-up to a similar meeting last month with the G.L.C. to discuss major improvements on the estates. Representatives from each estate gave a brief outline of the problems tenants faced and what they wanted to see done about them.

Tony McBrierty, Chair of the G.L.C. Housing Committee, explained that the Government had cut the amount they were allowed to spend and this meant that a number of improvements scheduled on the estates would be delayed or even shelved for the time being. Even so, the tenants managed to get a number of assurances from the meeting. In particular, the environmental improvements on Tanswell Estate, the entryphones on the ambulance station flats, and the renovation of the four remaining houses in Aquinas Street will go ahead in the near future.

Happy Christmas from Sid at The Wheatsheaf



LABOUR working for you locally...

TERRY RICH & KATHY CONNELLY your LABOUR councillors

on Lambeth council

Surgery

EVERY THURSDAY EVENING 6.45-7.30

at China Walk Tenants Hall, Lambeth Walk, SE1

FREE LEGAL ADVICE

Waterloo Action Centre
14 Baylis Road, SE1
Tel: 261 1404.

EVERY THURSDAY 6.30 - 8.00pm
NO APPOINTMENT NECESSARY.

The Legal Advice Service wishes all readers of SE1 a Merry Christmas and a Happy New Year.

We are a team of lawyers who can offer you free legal advice on all sorts of problems: Housing, consumer, matrimonial, debts, tax and insurance, wills, legal aid, court procedures, personal accident and injury, employment, unfair dismissal, social security, motoring offences etc. We can help you to write letters or complete forms or do them for you and can contact other agencies, the Council, landlords, government bodies on your behalf.

COIN STREET COMMUNITY BUILDERS



HAPPY CHRISTMAS TO EVERYONE FIGHTING FOR A BETTER WATERLOO & NORTH SOUTHWARK

MEETING ON HEALTH CUTS HEALTH SPECIAL

On Tuesday 20th November the Association of Waterloo Groups held a special meeting on Health Cuts. This meeting was organised to inform us of how the present cut-backs in the National Health Service will affect the services and jobs in Waterloo and West Lambeth generally.

In this area the N.H.S. is run by the West Lambeth District Health Authority. This Health Authority, like many others, has been told it must cut its budget - it has been told that it must impose cuts of £11 million. Cut backs have already been affecting the provision of services as we heard from all the invited speakers.

Pat Moberly, who is a member of the District Health Authority, informed everyone at the meeting of the new 'Strategic Plan', which if agreed upon by the Authority will mean over the next 15 years the closure of Tooting Bec Hospital, the closure of the South Western Hospital, and a continuing reduction in the number of beds at St. Thomas' Hospital.

Ray Harrison, who is the C.O.H.S.E. Branch Secretary at St. Thomas' Hospital, spoke of how the cut backs are already affecting working conditions and the threat of privatization. He stressed the importance of the need for community support for the workers in the hospital in opposing the cut backs and job losses. Health Services are not only being affected in the hospitals though, but also in terms of the services provided in the community. A local clinic doctor, Tony O'Sullivan spoke about the effects the cut backs were having on already overworked midwives and district nurses. Hospitals are now sending people home earlier than before and this is obviously putting an additional strain on community resources.

It was clear from what was said at the meeting that this situation is just going to get worse and worse with the further planned cuts of £11million.

The meeting was well attended by people from Waterloo and workers from St Thomas' Hospital. It was decided that it was important to set up an Action Group to keep informed of what is happening to our Health Service and think of ways of fighting these cuts. It is important that a lot of people get involved in the group. Contact Anne or Katrina - 633 0852 - for further information.



SEASONS GREETINGS

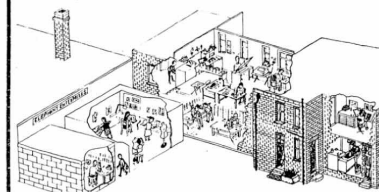
BISHOPS WARD BRANCH
VAUXHALL LABOUR PARTY

WORKING FOR YOU LOCALLY. FIGHTING FOR A BETTER FUTURE... WHY NOT JOIN US?

CALL 582 2955 OR 261 9744
OR WRITE TO BISHOPS WARD BRANCH
37 PEARMAN STREET
SE1 7RB

ELEPHANT ENTERPRISES

A part of Elephant Jobs Ltd



ARE YOU LOCAL AND UNEMPLOYED?

ARE YOU TRYING TO START A SMALL BUSINESS OR CO-OP?

ARE YOU LOOKING FOR LOW COST WORKSHOP SPACE?

If you are and you could also benefit from the advice and support of two full-time workers and the use of all the available equipment - then contact

Andy or Selina

Elephant Enterprises,
18 King James Street, London, SE1

01-261 0216

The premises are provided at low cost by the London Borough of Southwark. The site includes 4,000 sq ft of workshop space plus general facilities. The two full-time workers and their running costs are funded by the GLC.

The users of the workshops pay their own basic running costs, which is currently £3 per sq ft per annum. At that rate some of the workshops can be offered free of charge to groups with no source of immediate income for up to 6 months. All groups are able to stay for a maximum of one year, during which time there will be regular meetings with the Enterprise staff to help with starting up, developing the business, considering the future, etc.

CATHEDRAL SCHOOL OF ST SAVIOUR & ST MARY OVERIE; REDCROSS WAY The Staff & Children

wish all the people in SE1 a very happy Christmas and a prosperous New Year

The new term begins on Wed. 9th. Jan. 1985.

Christmas 1984

Union of Communication Workers

... SEASONS GREETINGS
TO ALL COMMUNITY GROUPS AND LOCAL RESIDENTS
SUPPORTING OUR CAMPAIGN TO OPPOSE CLOSURE OF
THE BOROUGH AND BRICKLAYERS CROWN POST OFFICES
SE London C and C Branch

HELPING THE MINERS

Whatever people think about the Miners strike, there can be no doubt that the miners and their families are enduring tremendous hardship in their campaign to defend their jobs and communities. Locally, people in Waterloo have responded generously to the desperate need of the miners and their families for food and clothing. The local Labour Party in Bishops Ward has passed over £800, since the dispute began which has gone to help the Mining Communities in Yorkshire and South Wales.

Miners and their families have also come down to London to explain their case and why this struggle for jobs is so important for everyone. Many have stayed with people in Waterloo who have been able to hear at first hand the tremendous suffering now experienced in all mining communities. In many ways their struggle is similar to ours in Waterloo. In both, the future of ordinary people is discounted in the face of property interests and a crude balance sheet mentality. It's time people ensured that their needs for decent jobs and homes were listened to for a change.

Want to help: Food and Clothing can be donated at North Lambeth Library or the Waterloo Action Centre. Lambeth Miners Support Group meet every Friday at the Town Hall at 6.30pm (274 7722).

CHRISTMAS



The Tabard Nursery, serving the Tabard Garden Estate, opened at the end of September this year. Presently housed in a two-bedroom flat given by the Council, the Nursery has 8 full-time and 4 part-time children and as you would imagine, a pretty long waiting list.



BAD MANNERED DOGS

A few facts and figures on the extent of the public health risk of dogs were recently published in a Report by the Manchester University's Dept. of Community Medicine. It highlights the problem of dogs running loose in public which was raised in the last issue of SE1 by Nelson Square Gardens Tenants Association. The UK's 6 million dogs are responsible for more than 60,000 infections a year, 210,000 dog bites that need hospital treatment and road accidents that cost £40 million. Children in particular are at risk of infection through contaminated soil and from public parks and streets. Dogs deposit nearly a million gallons of urine and 1,000 tons of faeces a day, mainly outdoors, doctors estimate. The report recommends that letting a dog off a lead on or near roads or in parks where children play should incur a heavy fine.

SAY NO

FOXED

THE FOX OF WATERLOO

The countryside comes to the town. A common enough experience these days with city farms (we have our very own at Vauxhall). Even so it still comes as a shock to see a fully grown fox walking down Aquinas Street on a Saturday evening.

Yet it happened on November 17th round about 9.30 PM (well before the pubs closed).

It obviously knew its way around and after giving a long cool stare strolled unhurriedly into Peabody Buildings.

Where was it going and where does it come from? Is it a Waterloo resident or was it just here for a visit? Has anyone else seen the fox of Waterloo? I hope so because not many people believe me at the moment.....

WATERLOO ACTION CENTRE Monday Pensioners Club

WISH ALL THE COMMUNITY

A MERRY CHRISTMAS AND
A HAPPY NEW YEAR.

TANSWELL

TANSWELL ESTATE

The outlook for the tenants of the Tanswell Estate looks a little brighter than when we last reported. Thanks to strong intervention by local GLC Councillor Bryn Davies and local MP Stuart Holland, the Department of the Environment finally gave permission to a revised scheme for external modernization of the Estate and Courtyards.

Now the work has been given project control approval and the work has gone out to tender.

Whether or not the estate improvements will actually start depends on what happens to the GLC Money Bill in the next few months. Both the GLC and Lambeth have agreed that the improvements to the Tanswell Estate deserve the highest priority. Lets hope that such commitment can produce results for the tenants on the Tanswell.

Best wishes from EVERYONE

at the Waterloo Action Centre

ADVICE CENTRE
Mon - Fri 10am - 2pm.
FREE LEGAL ADVICE
Thursday 6.30pm - 8 pm.
PENSIONERS LUNCH CLUB
Every day
PENSIONERS CLUB
Monday and Tuesday
YOUTH CLUBS
Wednesday 7pm.
REGULAR JUMBLE SALES
HALL & MEETING ROOMS FOR HIRE

14 Baylis Road SE1. Tel: 261 1404

The Action Centre will be closed from Friday 14th December and will re-open Monday 7th January.

SOMETHING FOR EVERYONE VISIT OUR SHOP

Ms. Robinson's
Bookshop Mon-Fri 11-6
SAT 11-4
BOOKS FOR CHILDREN OF ALL AGES



JIM, KATH AND MICHAEL CORCORAN
OF THE

ST GEORGES TAVERN

44 LAMBETH ROAD, SE1

SEND

SEASONS GREETINGS

TO EVERYONE IN SE 1



Christmas Greetings from Blackfriars Settlement

44-47 Nelson Square, SE1.
928 9521

Christmas 1984

CHRISTMAS CUSTOMS FROM AROUND
LAMBETH AND SOUTHWARK

In England it is traditional for the whole family to come together from all parts of the country to join in Xmas celebrations in a very private family gathering. Not all Londoners follow the English tradition, and many have their own customs, fondly remembered even though they originate from another country, and cannot be transposed in full to this one.

In Europe Xmas Eve is the most important day in the Xmas festival. The main meal is eaten on that evening, and the children chased out of the room. They are allowed in once the Xmas tree lights have been lit for the first time, and their presents placed under the tree. After opening their presents, the family attends midnight mass and carries on with the celebrations.

In Finland the Xmas tree is hung with a string of flags and is decorated with electric candles, large Gingerbread men and apples and sweets. Star-boys sing the special star song and act out Herod's story. Ham baked in a pastry case replaces the turkey eaten in England, and instead of Xmas pudding, people eat rice pudding with a lucky peeled almond inside it.

In Colombia everyone goes out onto streets decorated with banners and candles, on the eve of the 24th, where they dance. At midnight they attend the mass and then continue with the celebrations. In the more traditional homes, a crib is put out 9 days before Xmas, and all the family pray round the cradle for 9 nights before Xmas and on the last night Baby Jesus is placed in the cradle, to show the children he has arrived. It used to be the tradition that Baby Jesus gave the children their presents, but now Father Christmas is becoming more popular.



Coin St.

Coin Street Action Group have been the principal group involved in the struggle to prevent "office" speculation and ensure the implementation of the AWG scheme on the Coin Street Sites. Its meetings are open to all and a particular welcome is given to those who live in North Southwark and Waterloo.

At recent meetings, discussions have been held on the development of the Coin Street Sites and local involvement now that the land has been sold by the GLC to Coin Street Community Builders. Several people felt that there was a need for one regular meeting where all recent events and discussions about Coin Street could be reported on and any outstanding problems resolved. It was felt that such a meeting would help more people in Waterloo and North Southwark to become involved in the work at Coin Street and ensuring that the scheme met local needs.

The next meeting of the Coin Street Action Group, on Thursday January 10th 1985 at 7.00PM, will discuss these ideas further and give information as to what's happening on Coin Street. Its open to everyone and you don't have to worry if you have not been before to any meetings about Coin Street.

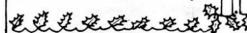
Local people fought long and hard to ensure that homes for rent were built on Coin Street and its up to us to keep involved and ensure the development is a success.

The meeting will be held at 99 Upper Ground SE1 (near the National Theatre). If you need help getting to the meeting or need a babysitter please contact Iain/Theresa/Gwen at 99 Upper Ground (633 6402).

Hope to see you there.

NORSPAG

WISHES ALL THE OAPS IN
SE1 A VERY MERRY XMAS
AND A HAPPY NEW YEAR
AND WE HOPE TO SEE YOU
AT THE NEXT MEETING
ON THE 10th JAN AT 2.30pm.



Cathedral Ward Branch Southwark - Bermondsey Constituency Labour Party

SEASON'S GREETINGS FROM YOUR
LOCAL LABOUR COUNCILLORS

Alan Davis & Geoff Williams
wish you a Merry Christmas and
a Thatcher-free New Year

ADVICE SESSIONS

If you have a problem they would be glad to see you at their Advice Sessions on:-

2nd & 4th Fridays of the month
at: Blackfriars Settlement,
Nelson Square 7.00 - 8.15 pm.

JOIN US IN OUR FIGHT TO SAVE
LOCAL POST OFFICES

Write today to The Secretary,
1 Douglas Buildings, Marshalsea
Road, SE1 DON'T DELAY

REMEMBER

Tory cuts and Liberal gimmicks
don't tackle the problems on our
estates or cut the dole queues
or stop London's economic decline

JOIN US TODAY
TOGETHER WE CAN BUILD
A BETTER COMMUNITY.....



Christmas 1984

DAYTIME ACTIVITIES

Beauty Health and Hair Care

Mondays 10-12 from 14th January
at the Community Building

Come and work on building self-confidence through looking at health and beauty aspects of life, skin care, manicure, pedicure, easy massage, face steaming, cosmetics and hair care - including afro-caribbean hair styles.

Assertion Training

Mondays 1-3pm from 14th January
at the Community Building

Do you find it difficult to get what you want or express your own needs and wishes. Assertion training increases our self confidence to say what we really mean without being aggressive!

Sports Morning

Fridays 10-12 from 18th January
at Colombo Street Sports Centre

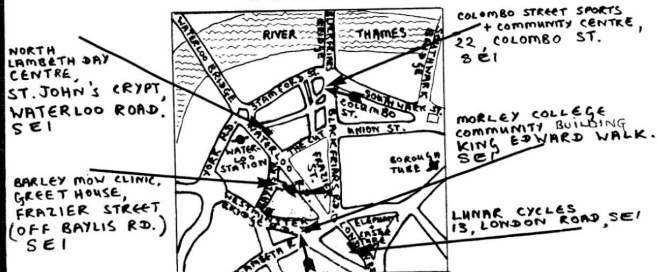
Tired lifeless - come and chat, have coffee, join in the activities if you want to - badminton, table tennis, bowls, soft tennis, keep fit, multi gym. Just wear something comfortable. All sports equipment provided free.

Relaxation and Massage

Fridays 1.15-3.15pm. from 18th Jan
at Barley Mow Clinic

Does your body sometimes feel tense? Here's in opportunity to learn for yourself how to do massage and other techniques to help you relax and ease the tension. Bring a blanket if possible and wear loose clothing.

JUST TURN UP - The activities are for 10 weeks, they are FREE and have childcare on the premises. In the evening and at the weekends childcare is for children up to 12 years of age.



For more INFO, ring Eithne 928 8501 OR Ashy 261 1404.

EVENING ACTIVITIES

Singing Workshop

Mondays 7-9 from 14th January
at St. John's Crypt

If you would like to sing, even though you think you can't, come along to this workshop, using soul and other popular music and where you can learn harmony and voice projection.

Assertion Training

Wednesdays 7-9pm. from 23rd January
at the Community Building

Again - Do you find it difficult to get what you want, or express your own needs and wishes. Assertion Training increases our self confidence to say what we really want - without being aggressive.

WEEK-END ACTIVITIES

Bicycle Maintenance

Sunday 5th February & 12th February
11-5pm at Lunar Cycles

Come and learn bicycle repair and maintenance eg. punctures, break adjustments, advice and information. Bring sandwiches and a bicycle, if you've got one.

Grande Finale

Friday 30th March at 7.30pm.
at the Community Building

A fun evening where women are invited to perform - any song, dance, stunt, comedy etc. If you want to participate, please ring Eithne Nightingale or Anne Dolan on 928 8501. There will only be one rehearsal. Otherwise come along and join the fun. Admission FREE, childcare provided. Charge for food and drinks.

BOB's XMAS RECIPE.

STIR-FRIED TURKEY & VEGETABLES

After Xmas we are usually inundated at meal times with dishes made from the left over turkey, ie. turkey soup! turkey pie! cold turkey and veg!!! Mind you, after the big bender of Xmas Day and Boxing Day, some of us will need to go cold turkey to clear our systems. Back to the subject of food. Here is one way I have found to use up cold turkey in a different sort of way. I hope you enjoy this meal and also have a very enjoyable Xmas.

Left over turkey
1 Spanish onion (sliced)
1 large leek (sliced)
2 or 3 sticks celery (sliced)
3 or 4 chinese leaves (chopped)
1lb mushrooms (sliced)
1 large carrot (sliced)
cooking oil
soy sauce
mushroom ketchup

Method

Cook ingredients in a wok - if you don't have one, a large frying pan will do just as well. Cut turkey into small cubes and fry in a little oil and soy sauce until just starting to crisp.

Mix all veg together, put a handful of the mixed veg into the pan with the meat and stir-fry for a few minutes, adding soy sauce and mushroom ketchup to taste. Put in an oven-proof dish and keep hot in oven while stir-frying rest of veg. Cook about a handful at a time.

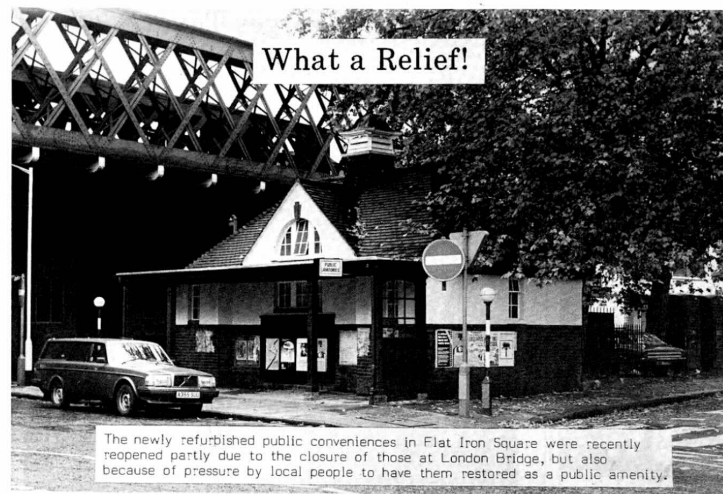
Serve with boiled rice or hot pitta bread.

Stuart Holland
your Labour M.P.
HOLDS ADVICE SURGRIES 7.30pm
LAMBETH TOWN HALL
1st and 3rd Mondays
CAB 323 KENNINGTON ROAD
2nd and 4th Mondays
Every month except Bank Holidays & August
HAPPY XMAS TO ALL



In August, Tanswell Mother & Toddler Group held a Jumble sale at Lambeth Mission to raise money for the Famine in Africa Appeal.

Here are some group members watching Eva, the Treasurer, writing out the cheque for £63, the total amount raised.



What a Relief!

The newly refurbished public conveniences in Flat Iron Square were recently reopened partly due to the closure of those at London Bridge, but also because of pressure by local people to have them restored as a public amenity.



AWG

Wishes You All

A HAPPY
NEW YEAR!

Best wishes from the Members & Staff

BLACKFRIARS
SETTLEMENT
WORK CENTRE

WATERLOO ACTION CENTRE
14 BAYLIS ROAD LONDON SE1 7AA

Merry Christmas
and Happy New Year,
SE1 Friends

AND BUY YOUR CHRISTMAS CARDS & GIFTS EVERY WEDNESDAY IN THE REAR HALL OF WATERLOO ACTION CENTRE FROM 10.30am to 2.45pm.

KEYBOARD
CO-OP.

We are a group of 5 women, all of whom have office and typing skills, and who all have children of mostly pre-school age. Having stayed at home with the children for several years, we had all lost the confidence to start working again, and were very nervous about hunting for jobs. Luckily two of our members had been put in touch with women & work at 460 Wandsworth Road, who suggested they start a co-op. Word was passed around our local Mother & Toddler group on Tanswell estate, that they were looking for other women typists - and this was how we three others came to join. This all happened in April this year and a lot has been achieved in the 7 months we have been together. All being in the same position gave us the moral support we needed to brush up our old skills and with the support of Lambeth Co-operative Development Agency we now have the confidence to start learning about the modern technology which has sprung up while we were housebound.

What attracted us about forming a co-operative rather than merely setting up a more conventional business was the idea of 'co-operation'. The main principles behind this are that each member has an equal share in the business and an equal role in it. Each person brings slightly different skills into the co-op and then shares them with the others. We are all given an equal chance to go on courses to learn any skills necessary to the running of the co-op. We all take turns at the various jobs which need to be done, which means that each person's work is varied and more interesting.

We have been surprised how much help and advice has been offered to us and this too has improved our self-confidence. But things do not always run so smoothly and although this is frustrating, it has made us all the more determined to make a go of it! It takes a long time to build up a business - especially when first of all you have to learn how to share skills and how to bring out the best in the others. But it is certainly worth the effort, and we would recommend setting up a co-operative to anyone who is willing to work very hard.

WCDG -
WORKING for WATERLOO

Seasons Greetings

from

Waterloo Community
Development Group

99 Upper Ground
(behind the National Theatre)



At the moment we are still in the process of setting up the co-op, but we now have an answerphone and can offer copy-typing at home, or typing in customer's premises. We have already done some typing for community groups such as: the Mobile Crèche and Waterloo Health Project. We will type anything, be it a lengthy report or a short letter, at a reasonable charge.

In the near future we hope to purchase more sophisticated equipment and to offer audio/shorthand typing, word-processing, PAYE, and photo-copying. If anyone has any other ideas for office services we could provide, please do let us know. Write to Sally Howe at 34 York House, Carlisle Lane, SE1 or phone Margaret on 928 8170.

All the Very Best...for
CHRISTMAS

"your local pub"

THE LORD CLYDE
THE BOROUGH
S.E.1

TRUMANS BEER
Merry Xmas from

Dennis, Molly, Michael, Lucy

Hot & Cold Food 407-3397

Give these toys a miner's child to play with!

This Christmas will be a little different for miners and their families. You can help make it fun. With this special gift scheme you can buy a toy for a miner's child. And your donation, to Women Against Pit Closures, will buy more than you could get in the shops. The toys illustrated are being provided through the Co-operative Retail Society London Region Political Committee. The Co-op is giving a substantial discount on the retail prices shown, so your money will buy more toys for more children. If your donation is small, don't worry! It will all go towards making a child happy. And the gifts will be shared between all the mining areas.



Your gift to a miner's child

Medical kit £4.99	Coffee maker, blender, mixer set £5.99
Li Gumdrop, doll and clothes £5.99	Crane truck £5.99
Kiddie Plane, with passengers £5.99	19-piece tool bench £7.99
	Plastic bath toys £2.49
	Scrabble £4.75

Southwark Trades Council.
gift scheme

If you don't wish to cut the page, simply note the details.

☐ I am pleased to help bring Christmas to a miner's child through the special gift scheme. I enclose _____ for Christmas toys. Cheque/PO payable to 'Women Against Pit Closures'.

If you have a preference for which toys your donation buys, please indicate _____.

Please note that other toys will be substituted if the supply of any of those offered runs out.

Name _____

Address _____

Send to: Gift Toys, Women Against Pit Closures, c/o Southwark Trades Council, 42 Braganza Street, London SE17 3JG. And thanks!

THE ABOVE ADVERT SPONSORED BY

Morley College Miners Support Group

Branch Committee
Civil & Public Servants Assoc.
DHSS Head Office SE London

Branch Committee
Society of Civil & Public Servants
London South of DHSS Head Office

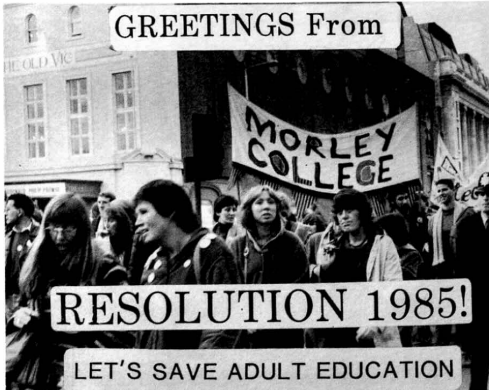
Branch Committee
N.U.R. Waterloo & Clapham Junction Branch
Coin Street Community Builders
Bishops Ward Labour Party

Cathedral Ward Labour Party

Stuart Holland, MP
Bryn Davies GLC Councillor Vauxhall
Kath Connelly & Terry Rich

Richard Balfe MEP

GREETINGS From



RESOLUTION 1985!

LET'S SAVE ADULT EDUCATION

St. Georges Tavern



LOCAL PUBS

St. Georges Tavern, 44 Lambeth Road, S.E.1. St. Georges Tavern resting in the shadow of the Roman Catholic Cathedral in Lambeth Road is one of the friendliest pubs in S.E.1. It's customers, most of whom have to walk past several other pubs to get to it, would certainly testify to that.

Complete with a large mural on one outside wall, "The George" is a small family pub run by Jim and Kath Corcoran for the last eighteen years and ably assisted by their young (and very sarcastic!) son Michael. The pub serves a good pint of Whitbreads Wethereds and Flowers Bitter and also does a roaring trade in Draught Guinness (spot the Irish connection!) Food is also available and the House speciality is steak and kidney pie topped off with a piping hot fresh cheese and onion.

Like all good pubs, 'The George' has a resident pub dog (Bandit, rescued from Battersea Dogs Home) and a pub cat (Busby, a stray who came in one day and never left). If you have any trouble finishing off your food or crisps then Bandit will certainly help you out. The pub attracts a mixed and friendly bunch of people of all ages and has a popular and well supported public bar.

It's an excellent example of the friendly locals that still exist in S.E.1 despite the dubious growth of cocktail bars theme pubs and disco bars that the brewers seem to think we all like.

Do you have a local pub that you think is worth a mention? Why not write to S.E.1. and tell us about it?

THE END

OF HOLY TRINITY SCHOOL!

Despite a strong fight from parents, the 131-year-old Primary School Holy Trinity in Waterloo is destined to close in July '85 as part of the I.L.E.A. cut backs.

I went to a coffee morning which parents have once a week to get some of their comments about the closure.

Mrs Susan Prime whose eight-year-old daughter Wendy attends the school, said "The I.L.E.A. have taken a short-sighted view by closing the school, the parents believe there could be about 1,000 new children living in the area in 1990 when the Coin Street's 400 new houses are completed".

Maureen Cousins who has two sons at the school, said "I think it's disgraceful, it's a friendly school with a good atmosphere between children, teachers and parents. I doubt whether I will find another

school like this in Lambeth". Lillian Taylor another parent said "It's a shame no-one came from the I.L.E.A. to see the school. I also think it's very bad they didn't have the decency to notify the Action Group of their decision".

Susan Forbes a parent and a member of the Action Group added "We should have had a full detailed report of why they came to their decision to close the school".

Caroline Laing Chairperson of the Action Group said "I'd like to thank Steve Baron from Waterloo Community Development Group, for his help, support, and advice during our campaign and to parents, friends and Governors who also helped in our campaign".

To end on a note of uncertainty - if the I.L.E.A. can close down this school maybe YOUR children's school is next?



THE LONDON
SCHOOL OF
FOREIGN TRADE

The school offers full-time courses leading to the award of:

- Diploma in Shipping
- Certificate in Shipping
- Certificate in English
- Diploma in Business Studies
- Diploma in Business Organization and Administration
- Advanced Diploma in Business Studies

The London School of Foreign Trade (K), (At Morley College), 61 Westminster Bridge Road, London SE1 7HT Tel: 01-928 6810 Telex: 888941 LCCI G ATN LST

International Trade and Distribution Certificate
Six months commencing January
● Certificate in Commerce
Three months commencing late September, January, April
● Certificate in English
Three months commencing late September, January, April
● Certificate in Business Organization and Administration
Three months commencing late April and September
● Intensive Business English Course and Intensive English Course
One month commencing late August

Merry Xmas and a Healthy New Year from WATERLOO HEALTH PROJECT

PENSIONERS HEALTH GROUP

Waterloo Health Project,
Waterloo Action Centre,
14 Baylis Rd, SE1. 633 0852

Post Office Saved!

Regular readers of SE1 will be aware that the future of the Crown Post Office on the corner of Stamford Street and Waterloo Road has been in doubt for some time. As part of the Post Office general "efficiency drive" our Post Office along with many others throughout London was threatened with closure.

Local reaction was swift and decisive ... "Leave our Post Office open!" The Association of Waterloo Groups organised a major protest and informed local M.P. Stuart Holland of the need to keep the Post Office open. Coin Street Community Builders wrote as one of the major landowners (!) in the area informing the Post Office of the major housing development planned for Coin Street. The Union of Communication Workers (U.C.W.) who represent the staff at Crown Post Offices objected to the closure of this busy Post Office and threatened strike action.

After this barrage of local opinion, it seems that management at the Post Office got the message. Waterloo Post Office is not now amongst those threatened with closure (sadly the threat continues to two major offices in North Southwark). The success in Waterloo must be due in large part to the united opposition of the local community, local councillors and M.P. and local workers ... it's a lesson to be learnt for the future. Meanwhile good luck to the North Southwark Community Development Group in defending a decent postal service in North Southwark.

Christmas 1984

The Cut Site.

Regular readers of SE1 will know that the Cut Site in Waterloo opposite the Old Vic has been the focus of local people's hopes of decent family accommodation. Such hopes have not been shared by the Housing Corporation however who have consistently refused all applications for family housing on the site.

At a meeting on November 13th, local residents came together to discuss the future for the Cut Site. It was generally agreed that the constant need in Waterloo was for family accommodation. However to prevent further blight on the site, proposals were agreed for a housing scheme mainly to meet the needs of single people, both young and old, which is also an important housing issue in the area.

This revised scheme then still has to go to the Housing Corporation for agreement and the present financial position imposed by the government is not encouraging. A decision is expected by February or March next year.

People who would like to find out more about what's happening with The Cut Site should contact Dave Scott at the Waterloo Action Centre, 14 Baylis Road, SE1. (261 1404)

GARDENING

WITH KEIB THOMAS

SEND FOR

A "FREE" SEED CATALOGUE!

Chelsea Choice Seeds, Folly Farm, Stratford Road, Dunmow, Essex CM6 1SG.

D. T. Brown Ltd, Station Road, Poulton-le-Fylde, Blackpool FY6 7HX.

S. E. Marshall, Regal Road, Wisbech, Cambs. PE13 2BF.

Unwins Seeds Ltd, Histon, Cambridge.

Suttons Seeds Ltd, Torquay.

ARMCHAIR GARDENS

ARE EASIER ON A WINTER DAY!

Thompson and Morgan, London Road, Ipswich, Suffolk.

Mr Fothergill's Seeds, Gazeley Road, Kentford, Newmarket, Suffolk CB8 7QB.

J. W. Boyce, 67 Station Road, Soborn, Ely, Cambs. CB7 5ED.

Samuel Dobie and Son Ltd, Upper Dee Mills, Llangollen, Clwyd LL20 8SD.

THE TRUSTEES OF THE BOROUGH MARKET AND THE MARKET TENANTS

Suppliers of fresh fruit & vegetables to local greengrocers

Wish the people of S.E.1. a Happy Christmas and a Prosperous New Year

IT COSTS LESS TO SHOP AT YOUR LOCAL GREENGROCER THAN AT SUPERMARKETS

KEYBOARD CO-OP

(FAST, EFFICIENT TYPING SERVICES

AT A REASONABLE PRICE)*

wishes all readers of SE1 a happy Xmas

*For more information:

Phone Margaret on 928 8170

Or write to Sally Howe, 34 York House, Carlisle Lane, SE1

CHRISTMAS WITH SE1.

say no to Post Office closures...

On Thursday Nov. 22nd, over 300 people- local residents and postal workers- braved heavy rain to protest at the Boro Post Office against the P.O.'s plans to close 7 Branch and sub offices in Southwark.

Over the next 3 years the P.O. intends to close 5% of its national counters network, but these cuts will mean that Southwark will lose closer to 20%.

These cuts will most severely affect the elderly, the disabled and young families with kids, who'll now have to walk further. The campaign locally against closures continues and is supported by many groups. (For more information ring: 928 0711).

The successful demonstration shows the strength of local feeling and we hope to fight this through to a successful outcome.

People who want to protest can start by writing to: Sir R. Dearing, Post Office Chair Post Office Headquarters St Martins le Grand LONDON EC1A 1PS



SEASONS GREETINGS



"Buster"

Young Peoples
Theatre Co



WATERLOO EMPLOYMENT PROJECT

WISH EVERYONE A MERRY XMAS
AND A HAPPY NEW YEAR

keep fighting for the GLC

Lunar Cycles Bicycle Repair Co-operative



13 London Road, London, SE1
Tel. 01-261-0602
Tues-Sat 10-6
Repairs, Spares, Accessories



Mint Street Adventure Playground Association

WISHES THE KIDS OF S.E.1.
A MERRY XMAS

and welcomes you to the
playground in Lant St SE1
We are open during the
school holidays 12 - 8
on Tuesday to Saturday
Leaders: Anthea Gary Michael

U.P.B. SUPERMARKET

Flat Iron Square, Union Street.

WISH ALL OUR CUSTOMERS A VERY
HAPPY CHRISTMAS & A
PROSPEROUS NEW YEAR

SAY YES TO HOMES

COIN STREET HOUSES GET GO-AHEAD

The detailed design of 56 new houses to be built on the old Coin Street car park has been completed. Each home has a private garden and access to a shared community garden. Nearly 300 people will be housed in what will be the first of eight sites to be developed by Coin Street Community Builders, the non-profit company set up to implement the homes, shops, park and light industry scheme for which local people have campaigned for so long.

Construction of the first 56 homes is due to start this May and to be completed two years later. The design work was carried out by a GLC team which was guided by regular meetings of a local 'Housing and Social Facilities' group. This group will now be looking at the design of other housing sites and also at proposals for tenant and community facilities in the Coin Street development. Meetings are open to all local residents and a baby-sitting allowance is available. (Contact Theresa McDonagh on 633 6402 for details.)

A new architectural model and artists' impressions of the 'site C' housing are on display in the Coin Street Design Centre at 99 Upper Ground (behind the National Theatre).

DEMOLITIONS

Meanwhile demolition of old buildings on other parts of the site continues. Demolition of the old Boots office and warehouse should be completed by Christmas; of the Eldorado cold store by the end of February; and of Nelsons and Gabriels wharves by the end of April.

ALLOCATION OF COIN ST HOMES

All the homes built as part of the Coin Street development will be made available for rent by those in housing need, but no detailed allocation policy has yet been agreed. Lambeth and Southwark Councils will be funding the housing element of the scheme jointly and are anxious to settle the allocation policy as soon as possible. A public meeting with Hazel Smith, Chair of Lambeth's Housing Committee, and Terry Rich, Chair of the Kennington District Housing Committee, will have taken place by the time this issue of 'SE1' is published.

NOTE: The September 1984 issue of Coin Street News gives the background to the Coin Street campaign and development. Copies from 99 Upper Ground, SE1.

NORTH SOUTHWARK COMMUNITY DEVELOPMENT GROUP

OUR XMAS SHOPPING
LIST IS:-



WISH ALL OUR MEMBERS,
FRIENDS AND SE1 READERS
A HAPPY CHRISTMAS

56 SOUTHWARK BRIDGE Rd. SE1.
Ring Ted, Gerry or Stewart
on 928 0711 or call in.



The property speculators and LDDC's New Year Resolutions:-