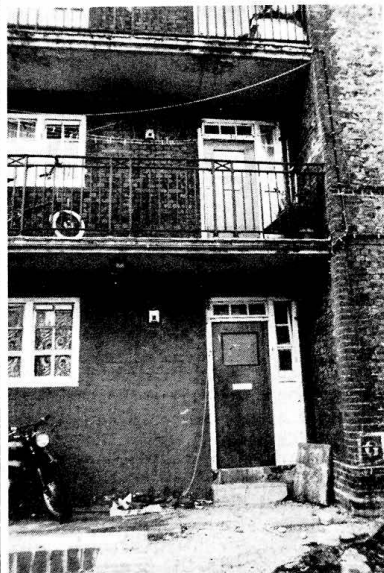




SE1



ISSUE 30 MARCH 1985 FREE COPY



Renovation of ex-GLC Estates under threat

On 13th February, hundreds of council tenants lobbied Parliament against a Government threat to cut back its financial commitment to renovate ex-GLC estates. By the end of this year, over 200,000 flats will have been transferred by the GLC to various London boroughs. When this handover began in 1981, the Government agreed with the GLC and the boroughs concerned a ten year renovation plan costing over £1,000 million. Flats would be brought up to an agreed standard by 1992 at no cost to the boroughs. The programme is underway and last year the GLC spent over £70 million on modernizing its old estates.

Because of the proposed abolition of the GLC in April 1986 the renovation programme, which

will be transferred to the boroughs seems sure to be cut. Already less money than first promised is being made available. Jobs in the building industry will be threatened as well as peoples' hopes of seeing their homes brought up to standard with better kitchens, bedrooms, repairs to roofs & windows, etc.

in a bad state of repair, damp and mildew being big problems. Until now, Southwark and the GLC have moved slowly with its estate improvements at Tabard. As the Department of Environment is now saying that it did not make any promises to fund the renovation of ex-GLC flats, modernization seems more than ever unlikely.

Tabard Gardens

The Tabard Garden Estate in Nth Southwark was well represented on the 13th February lobby of M.P.'s. It is one of London's oldest and largest former GLC estates and was handed over to Southwark Council in 1981, without consultation of the tenants.

It has 1800 flats, many of them

So far, only 2 out of 38 blocks have been renovated on Tabard, under the GLC programme, and 30 courtyards still remain to be improved. About one-third of flats still have no central heating. Rita Sergeant, Chair of the Tenants Association says that Tabard has made many representations to Southwark's Housing Committee on improvements to the estate under the GLC scheme, but without luck.

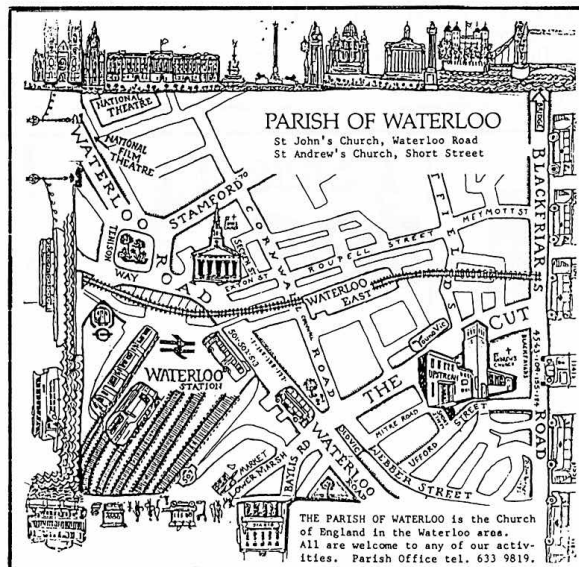
70 Bus cut back

Many SE1 readers will have noticed that the No.70 bus service no longer runs at weekends. London Regional Transport withdrew it at the end of January, saying that it was losing money.

This will inconvenience a great many people, in particular Rotherhithe/Surrey Docks residents wanting to visit relatives or friends in Guy's at weekends, according to members of the StOlaves Hospital Campaign who have written to LRT to protest at the closure of the service on Saturdays & Sundays.

Since LRT took over London Transport from the GLC, the fares have shot up and the services have been reduced to serve mainly the rush hour traffic. More reductions are planned. Over the next year, LRT is cutting its scheduled mileage by 5 million or 2.8%. Residents will be even further edged into life in the slow lane.

→ **INSIDE** P.5
SE1 Crossword



Not what the doctor ordered!

On the Market....Help!

THE STRANGE CASE OF ST. OLAVE'S, ST. THOMAS' AND ST. JOHN'S UNITED CHARITIES.

Everyone knows what a charity is and what they are supposed to do. Nationally there are thousands of charities but they should at least have one thing in common: they should add to the general good in society and not act in a way harmful to those dependent on their activities.

Easy enough for most charities, you might think. Yet in this issue of SE1 we highlight the case of one charity whose activities are causing considerable concern and distress to one group of people dependent on it.

continued page 2

The local newspaper!

St. Olave's, St. Thomas' and St. John's is a long established charity based at 6-8 Druid Street, just off Tooley Street, SE1. Its general purpose is to 'provide help for the poor of Bermondsey' (probably as big a job now as when the charity was first established). The charity is administered by a Board of Trustees which includes eight local people nominated by Southwark Council.

St. Olave's had two large estates at Fairlawn Park, Sydenham, and around Walnut Tree Walk in Kennington, SE1. Over the years, many of the properties on these estates have been sold, either to sitting tenants or to the appropriate local authority. The charity's property holdings are now concentrated in Kennington at Walnut Tree Walk and St. Olave's Mansions, Kennington Road.

ST. OLAVE'S MANSIONS

It is in St. Olave's Mansions that the charity's activities are causing most concern. The mansions were built in 1939, and many of its early tenants (several of whom still live there) were given accommodation there after being bombed out of Bermondsey during the Blitz.

Since 1976, few repairs have been done to the property, and then only through court action by the Environmental Health Officer for Lambeth Council. Many tenants complain that the present clerk to the Trustees, Mr. Pollock, refuses to authorise urgently needed repairs and has told an elderly tenant that if he didn't like the accommodation then he ought to move elsewhere.

Another elderly tenant was forced to spend several months at her daughter's house because repairs were not carried out on her flat.

Now they have discovered that the entire forty flats are up for sale on the open market. No attempt has been made to sell the flats to a responsible landlord such as a local authority or a Housing Association. Indeed the tenants were not even informed that

their homes were being put up for sale. The nature of the sale has made it extremely likely that the flats will be bought by a property company whose main concern will be a quick profit, rather than the welfare of the tenants.

LOCAL REACTION

The advertisement in the South London Press was spotted by Michael Morrissey, a local resident and Labour Party member who was able to identify the block and brought it to the attention of the local Labour Party. The agents refused to disclose who the landlords were and it was only after contacting the tenants that it was possible to find out.

When contacted, Mr Pollock refused to answer any questions about the sale, saying that it was a matter for him alone, and did not concern the tenants at St./ Olave's Mansions.

Terry Rich, local councillor and Chair of the Kennington District Housing Committee, said of the proposed sale: "St. Olave's Mansions is the sort of

property that with necessary modernisation could help to resolve Lambeth's housing crisis. Unfortunately this Government has forbidden any local council to buy up any property that comes up for sale on the open market. If this charity persists in this sale at the present time, the only likely purchaser would be property speculators who would do everything possible to get rid of the present tenants".

Extremely concerned for the future welfare of the tenants, Paul Wheeler, Secretary of Bishop's Ward Labour Party, approached local MP Stuart Holland for assistance. He immediately agreed to take up their case and said: "quite frankly, this charity has treated its tenants at St. Olave's Mansions in a disgraceful manner. Many are elderly and extremely frightened as to what will happen to themselves and their homes. This charity is acting like the worst possible type of private landlord."



WHOSE CHARITY?

One of the most alarming features of the case is what it has revealed about the conduct of St. Olave's Charity and the control and knowledge of some of its Trustees.

Mr. Percy Henley, presently Vice-Chair of the Board of Trustees, wrote regarding one inquiry that all the charity's property in Walnut Tree Walk had been purchased by Lambeth Council (which was quite incorrect). Further, according to the Charity Commissioners, the Charity has not filed any accounts since 1972, although it is required by law to give a financial statement each year.

Towards the end of 1984, the term of office of five of the Trustees came to an end. Southwark Council nominated five new Trustees. The Clerk to the Trustees refused to accept their nominations although they had been validly made. It was only after threatened legal action by Southwark that the new Trustees were accepted. A Trustees' meeting has yet to be called.

It is events such as these that has led Stuart Holland to refer to the whole conduct and operations of the charity to the Charity Commissioners for investigation.

PRESENT SITUATION

An uneasy stalemate now exists regarding the future of

St. Olave's Mansions. The new Trustees have pledged to review the whole sale and that the interests of the tenants will at last be considered. In the present climate, the best solution would be for the charity to retain the property, complete the necessary repairs, and sell the property to a responsible landlord when this proves possible.

Mr. Pollock refused to confirm or deny that the sale was proceeding, despite the fact that new Trustees have been appointed to the Charity.

One smokescreen thrown up by some involved in the Charity is to argue that they have to serve the interests of the charity and raise money for 'good works' in Bermondsey. Yet they receive £33,000 a year in rent from St. Olave's Mansions, little of which, according to the tenants, is spent on maintenance.

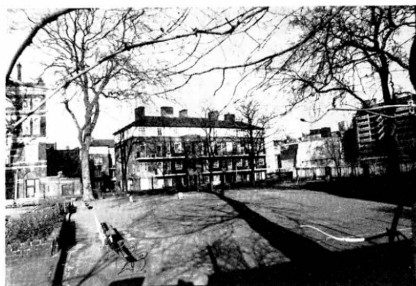
Anyway, how can a charity - or indeed anyone - justify raising money by selling off the homes of many long-standing tenants to some latter-day Rachman.

SE1 asked Mr. Pollock for any statement he might wish to make regarding the recent activities of the charity under his control. His response was the standard practice he has adopted in the past, both with ourselves and with the tenants. He told us to 'Go to Hell', and put the phone down.

BATTLE FOR BETHEL

Residents of Bethel Estate on Hay's Wharf are once again at the sharp end of the struggle for low-rent homes on Bermondsey's Riverside. Last month Southwark Council started to decant the estate in order to comply with a controversial deal to sell public land and desperately needed flats to property developers St Martin's Company. This is in spite of the fact that there are no plans to build on the site for a number of years.

the benefit of the local community and will build low-rent public housing on such sites for local people." O'Grady, who must have known of this, subsequently took a job as a Director of the LDCC and was expelled from the Labour Party. Nearly three years have passed since that politically dishonest deal was signed, and it is election year again in Southwark. Local people have the right to expect that the



Most of the people who live on Bethel do not want to move, and have written to the Council asking them not to go through with the deal. Southwark's housing is at crisis point already. St Martin's and the LDCC must not be allowed to make it even worse by demolishing 47 perfectly good flats, moving people out of the area and destroying a community.

Councillors who were elected on the basis of using public land for local people will stand by their manifesto promises and refuse to go through with O'Grady's sordid deal.

Southwark's only hope of holding the LDCC to its promise that the eastern end of Hay's Wharf will be used for housing is to refuse to hand over Bethel Estate and the surrounding land until those new homes are built. Getting rid of the estate this year will leave the Council - and local people - with absolutely no say in the future of Hay's Wharf, and no guarantee that this important housing site is used for housing.

Mike McCann
Bethel resident

BARON'S BARRED

Opposition to a proposal to keep a local bar open till 2.00am Mondays to Saturdays has been successful.

Cathedral Ward Branch
SOUTHWARK-BERMONDSEY
CONSTITUENCY
Labour Party

Cllr. Alan Davis &
Cllr. Geoff Williams

ADVICE SESSIONS.
If you have a problem they would be glad to see you on:

2nd and 4th Fridays of the month at: Blackfriars Settlement Nelson Square from 7.00-8.15 pm.

The owners of Baron's Bar and Grill in Waterloo Road (which used to be the Royal Victoria pub, next to the Old Vic) wanted permission for the extension.

The Association of Waterloo Groups felt that the noise and disturbance likely to be caused to neighbouring residential streets was such that the idea should be opposed.

People living in Webber Street, Mitre Road, Ufford Street etc have suffered considerable nighttime disturbance and parking difficulties since the re-opening of the Old Vic, and the Association decided that the longer opening hours

AT LAST!! A COMMUNITY BUILDING
FOR THE BERMONDSEY ST AREA

No more long winter walks or a cold wait wondering if someone is going to open the local school.

The recently elected Management Committee, made up of local people, hope that the GLC and Southwark will fund a full-time worker for the centre and provide money for a community hours fund, a fund where local people with skills can be paid on a sessional basis. So far we hope to have the following activities at the Centre: Under 5's and after school care for children, ethnic minorities groups, pensioners

behind Bermondsey Street, in Leathermarket Gardens near Snowfield School, a new purpose built community building is almost complete. The heating is just being installed in time for the summer and local groups are queuing to get into this much needed local facility.

After years of community participation and a lot of fun in the Bermondsey Street area, Leathermarket Gardens Community Centre will open shortly.



For the past 15 years we have run all manner of community activities like playschemes, outings, theatre events, health groups and educational sessions, from peoples' front rooms or even from pubs. For bigger meetings and events we've had to walk to the Ark in Crosby Row, a fair distance for the elderly and the young along dimly lit and deserted streets lined with warehouses and empty office blocks. To have a building within easy reach of all the estates and local residents and to be able to get to it in safety is a big bonus, especially for women.

It is thanks to the regular attendance at meetings over the years by young people and OAP's like Mrs Frost and Mrs Frazer of Tyers Estate that the GLC and Southwark have together funded the new building.

groups, legal and financial advice, children's and adult's education, local history and issues, small youth group activities, a theatre workshop, social and recreational activities.

We hope to open the centre with a Bermondsey Street Party and Sports Day so start training for the womens (and mens?) netball, the tug of war, football and races.

For further information, contact:
Lois Acton 703 3138
Ann Rapshott 403 7434

ROCKINGHAM ESTATE
COMMUNITY CENTRE

Rockingham Estate Community Centre opened in 1977. It is a purpose built Centre located off the New Kent Road, within easy reach of the Elephant and Castle and British Rail, Bakerloo and Northern Line underground stations, and the following buses: Nos. 1, 188, 63, 177, 141, 133, 53, 35, 40, 95 and P3.

The Upper Hall holds 200 people and has a kitchen, Bar, and shower facilities available. The Lower Hall holds 80 people and both are ideal for receptions, parties, meetings, etc.

For more information and booking details please visit the centre between the hours of 7pm and 10pm Wednesdays and Fridays or Telephone 407 0118 during the above hours.



**Save
idea
CAMPAIGN**

★ **FAMILY HOUSE**
Large Beer Garden (children welcome)
Function Room
Seafood Spread Sunday Lunch

★ **LIVE MUSIC WEEKENDS**
Pool Table, Darts
Large Range of Food, Hot & Cold
Real Ale

THE CROWN
108 Blackfriars Rd

ANTLER BITTER 68p/Pint

WS MILD 70p/Pint

A WATNEYS HOUSE



Best Wishes

TO _____

READERS OF
SE1

FROM _____

THE HOLE IN THE WALL

MEPHAM ST

(Next to Waterloo Station)

REAL ALE	GOOD FOOD
A WARM WELCOME GUARANTEED	

BULLRING MEETING

'What do you do with a large hole in the road?' This question brought together representatives from the GLC and Lambeth Council and local people to discuss the future of the 'Bullring' at the South end of Waterloo Bridge.

The GLC had prepared for discussion a wide variety of possible uses, ranging from shops to housing, inside the bullring. None of these was seen as realistic, since they would all involve VEHICLE access which would interfere with the pedestrian through-route (one of the busiest in Waterloo).

One interesting point made was that of the level of lead pollution was not as high as previously thought, and that the Bullring could support the growth of trees and shrubs.

A hard sell was made by a representative of the Children's Experience Centre - a kind of museum where children could learn by doing and making and feeling, and enjoying things (as opposed to just looking at them). Most people welcomed their ideas, but everyone agreed that the Bullring would be a most unsuitable location for such a centre. Not only because of the lead pollution, but also because of the congestion that would be caused by the arrival and departure of the expected 350,000 visitors per year.

Most local suggestions centred on the need to make the Bullring a safer and more pleasant place to walk. Better lighting was urgently needed for the colonnade area (the so-called Hall of Columns).

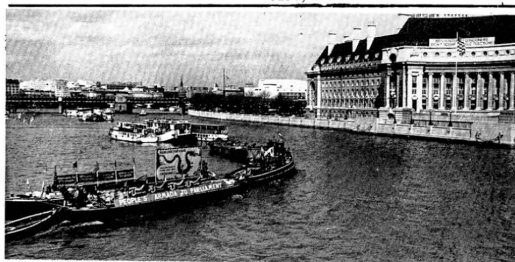
One idea which was favourably received was for a large fountain or water-feature. London lacks the use of water such as is common in other great European cities. Everyone agreed that the Bullring needed a LOT of greenery in it to soften its bleak concrete face.

To encourage people to use and enjoy the Bullring, it was agreed that it might form a suitable venue for buskers in a similar way to the approach adopted for Covent Garden.

And given its location away from residential areas, the 'hall of columns' area was suggested as a place where an enclosed space could be constructed for use as a music venue. A general weekend market, as at Camden Lock, was rejected, but the possibility of a specialist (e.g. book) market was considered possible.

All these ideas will now be investigated further by the GLC who will arrange another local meeting to discuss more worked-up proposals.

Do YOU have any ideas for the Bullring area? If so, why not ring Steve Barran or Christine Thomas at WCDG (633 9291)



1985.

Many will remember last year's successful 'Peoples Armada', when over a thousand people from all over Docklands sailed up the Thames together to deliver a 'Peoples Charter' to the Prime Minister. The Charter set out local demands for the area:

- * The right for people to have a say in decisions affecting their futures
- * The need for housing to meet local needs
- * Employment and training opportunities for local people.

This year, on Thursday April 4th the second Peoples Armada will set sail. A procession of boats will leave Blackwell Point for Parliament where a revised Charter will be handed to the Docklands MP's. The day's events will wind up with a Docklands Festival at the Jubilee Gardens.

More Info: Stewart on 928 0711

DON'T BE A PAWN!

Anyone interested in forming a Chess Club catering for beginners and all standards of players. Please contact Colombo St. Community Centre on 261-1658. All aces welcome.

Through The Seasons In Waterloo

by Christopher Smith

Waterloo in January, snow falls to the ground, Waterloo in February, ice glitters all around, Waterloo in March, sees the spring, summer to come, Waterloo in April, sees spring's first sun, Waterloo in May, roses bloom in gardens too few, Waterloo in June, the sun on the South Bank views, Waterloo in July, travelling to the beach, Waterloo in August, having fun out of harm's reach, Waterloo in September, autumn sets in, Waterloo in October, falling leaves and a frosty grin, Waterloo in November, bonfire night, Waterloo in December, happy houses and Christmas light! So if you're fed up with your dirty old town, Waterloo is the best place to come, ALL YEAR ROUND.

CHRISTOPHER SMITH 12.07 SAT. XVI. II. MCM.LXXXV.

SORRY!!!!

We forgot to tell you who wrote the poem in the February issue of SEL. It was Lilly Taylor of 32, Aquinas St, SE1 who celebrates her 83rd birthday on March 1th.

HAPPY BIRTHDAY LILLY !!!

SOLD DOWN THE RIVER

Several years (well before the LDDC was thought of) the Daily Telegraph announced the move of their printing works from Fleet Street to the Millwall Dock. One of the main reasons for this move was to secure direct water access for newsprint supplies and so avoid congestion on the roads from large lorries trying to deliver this newsprint.

Now it seems that the London Docklands Development Corporation has allowed development that blocks off this direct water access for the Daily Telegraph.

As George Nicholson local Bermondsey Member and Chair of the GLC Planning Committee said 'The Daily Telegraph Group receives 50,000 tons of newsprint a year equivalent to a daily delivery of 20 lorries of newsprint. If these lorries could be taken off the road, this would make a major contribution to the environment for East Londoners and would show that the river Thames still has major potential for bringing goods straight into the centre of London.'

So as well as letting down local people by building homes at prices few people can afford and trying to steal our land at Cherry Garden Pier the LDDC can't even help major firms to move into Docklands. Not much of a record is it?

DOES YOUR CHILD HAVE ECZEMA?

Nano Donoghue's child has and she understands how distressing for the family and child this very itchy and painful skin condition can be. She joined the NATIONAL ECZEMA SOCIETY which offers support and up-to-date information on medication and research. Understanding the disease and realising she wasn't alone helped her to cope.

She now has become a local area contact for the N.E.S. and would like to help you, so if you need information or advice, you can phone her on 261 1959; or write to her at:

Northcote House,
37a Royal Street,
London SE1 7Z.



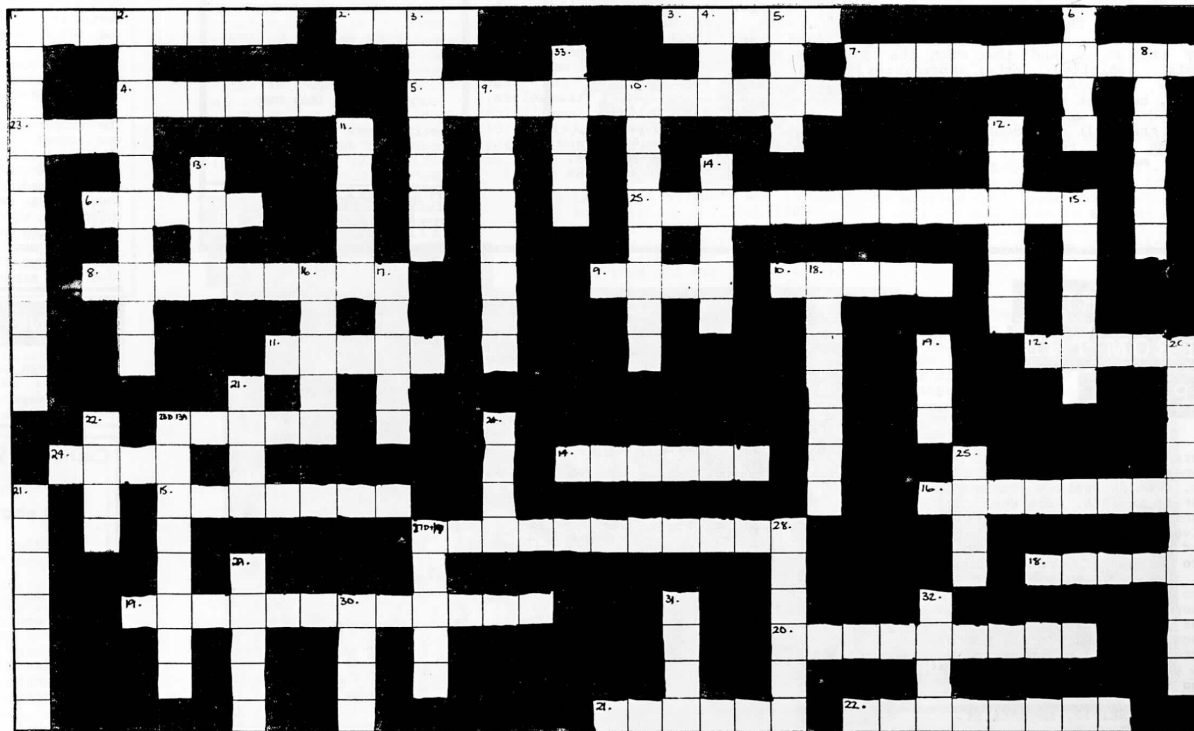
SE1 CROSSWORD

ACROSS

- Once full of energy (8)
- Lamb wouldn't be the same without it (4)
- Location (5)
- Known to turn a blind eye (6)
- Often seen in Holland (& in Brixton!) (8,4)
- What every worker needs (5)
- Sign of a Bank (10)
- Slayer of Dragons (2,7)
- Doing the Lambeth (4)
- Prison (5)
- Man's Name (5)
- Sovereign (5)
- Let's hope it applies to the future of the LDDC! (5)

DOWN

- Shadowy Monk (11)
- Pass this way for cricket (10)
- Fresh Pork (7)
- Practiced in the Strand (3)
- Keeps the fire going (4)
- Scottish Word (4)
- No clue 7, go to 8!
- One of Mark Twaine's famous characters (6)
- Inventor of Steam Engine (8)
- From the Abbey to the Martyr (4,4)
- Bishops Hat! (5)
- It's best to keep your feet on it (6)
- Merry old Monarch (4)
- A national emblem (5)
- Dead Weight (6)
- Welcome (5)
- Musical Sheet (5)
- A Bridge too far for Ben (7)
- Founder of Hospital (3)
- Leads the Elephant to the Circus (6,4)
- Religious Leader (4)
- Not Dole (4)
- Scene of football across the Water (8)
- Fall (4)
- Stroll (4)
- A piano by another name (7)
- Sea shell (5)
- Creator of famous Duck (5)
- World (5)
- Elegy in a Churchyard and ex Prime Minister (4)
- Large Mammal (4)
- Pathway (4)
- Used to polish metal and glass (5)

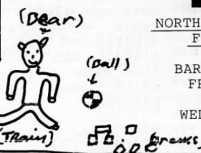


LIKE TO BORROW

A

TOY?

NORTHCOE TOY LIBRARY
FOR UNDER 5'S
IS AT THE
BARLEY MOW CLINIC
FRAZIER STREET
EVERY
WEDNESDAY 2-4 PM



CHARTERHOUSE YOUTH PROJECT

You may have noticed an advertisement in last month's SE1 newspaper for a volunteer for the Charterhouse Youth Project. As an antidote to the gloom connected with the rate-capping I thought something positive, to do with young people was in order!

Charterhouse Youth Project is situated near the Borough tube station and the young people who attend it come from the local estates. It takes place in a very light and large upstairs room, which is sectioned off by partitions into two halves: one for games, ie pool and table tennis and the other being a quiet cosy corner where one can play board games or just chat. They have their own kitchen, and when I visited it happened to be Shrove Tuesday and both the girls and boys were making their own pancakes.

Mondays is girls only night - they have discussions, which sometimes guest speakers attend. The girls chatting with these felt rather outnumbered young people, and how by the boys, and that much the girls and boys this inhibited other appreciated having some-girls from joining the where to go, where they club, but that the Mon- could choose what they day sessions were so good wanted to do. One ex- that they felt confident volunteer, Floyd, who enough now to go to was visiting them that the mixed nights as night, got involved well.

The volunteers all said how much they liked attend. The girls chatting with these felt rather outnumbered young people, and how by the boys, and that much the girls and boys this inhibited other appreciated having some-girls from joining the where to go, where they club, but that the Mon- could choose what they day sessions were so good wanted to do. One ex- that they felt confident volunteer, Floyd, who enough now to go to was visiting them that the mixed nights as night, got involved well.



a friend while he was working as a security officer, and enjoyed working with people so much that he trained in Play Leadership, and is now working for a local health authority on integration.

Not all of the activities take place indoors the volunteers take the young people roller-skating, ten-pin bowling, and recently they visited the Thames barrier.

They go camping at weekends too and the club members have to plan everything themselves - from where they want to go right down to what food they want to take with them.

They also have summer and Xmas playschemes. They perform plays for the children on their local estates - designing and making up their own costumes. Last Xmas they performed Charles Dickens in the junior club behind their premises, personally inviting their younger children to attend.

There were photos of their plays on the club walls and they were obviously very justly proud of their achievements.

I thoroughly enjoyed my visit to the club, and found it a very relaxing and friendly place for young people to go to. It was good to see them not just enjoying themselves, but at the same time building up skills of self-reliance and gaining new experiences.

Tel: 407 5666 (Mina)

"NO" To

RATECAPPING!

Ratecapping is totally opposed by liberals and Social Democrats. Locally raised money should be available for local services, and it is a democratic principle that locally elected councillors should be able to decide the local spending priorities. If we disagree then every 4 years we have the chance of changing councillors.

In Nth Southwark and Waterloo, amongst other things, we need more sheltered accommodation for the elderly, more money for housing repairs, better road and pavement maintenance and more nurseries for our youngsters. Ratecapping means that many of these services may not be provided - either satisfactorily or even at all.

Simon Hughes

M.P.

What our local

Councillors say.....

In the last 5 years, Government has cut grants to Southwark by the equivalent of nearly £500 for every man, woman and child in the Borough. Southwark was forced to increase rates to protect and improve services. Since our election, together with the GLC, we have improved services in Nth Southwark - new Day Centres, sheltered housing and playgrounds, community centres and major housing works.

We must now mobilize to fight against ratecapping, which means fewer services for the elderly, handicapped and for young children. Help save jobs and services, sign our petitions and support the protests of March 6th & 7th.

Geoff Williams Alan Davis

RATECAPPING THREATENS US!

All Change For Southwark Station!

These days whenever we hear about new transport schemes in the city it usually involves government proposals for new roads which would destroy hundreds of homes and jobs. Therefore it came as a great relief to hear of a proposal from British Rail to re-instate a new railway line and build new stations in North Southwark.

The line concerned is the Blackfriars to Farringdon link which was last used in 1916! The plan put forward by British Rail and GLC involves re-opening this line to create a through running service from London Midland to Southern Region Stations.

The new through route through Snow Hill would involve the construction of three new stations. The first would be in Union St. near Blackfriars Rd with two other stations in Walworth (Fieiding Street) and Camberwell (Camberwell Green). The new line would offer better links to other services such as at Elephant & Castle station to the Bakerloo & Northern lines and at Peckham Rye to the BR Interchange to Dulwich and Permdondsey.

BR believe that the new link would generate increased passenger usage on the existing services to Holborn which have been in decline over the last ten years.

Estimated cost of the scheme is £1.16 million. The scheme was enthusiastically adopted by the Planning Committee of Southwark Council. They suggested that trains should be scheduled every ten minutes off peak service and five minutes peak service.

Now we have to wait and see if British Rail can find the money to implement this worthwhile scheme. Let's hope so!

REMEMBER THE HERO OF WATERLOO?

Ever heard of the Hero of Waterloo. We hadn't, until a plan emerged to turn it into a car showroom.

Apparently, a pub that name used to stand on the corner of Waterloo Road and Mepharm Street, where some of the traffic from Waterloo Station comes out into Waterloo Road. For some while it has been a vacant lot, with advertising hoardings around it.

Now the car firm from Wootton Street wants to turn the site into a car showroom, and two of the Tenison Way shops next door into car accessory shops.

Can you remember what it was like when there was a pub there. Have you any memories of the pub. Let us know if you can - we'd like to hear them.

Also we'd like to know what you think of the plan to put a car showroom there.

GARDENING

WITH
KEIB THOMAS

Photograph by
Peter Simmons.

How can I continue to write about gardening when Thatcherism threatens the Inner City Environment with even greater destruction and hardship! Thatcher's spiteful and stupid policy of ratecapping is aimed at robbing the poor so that she can go on rewarding the better off. No wonder an increasing number of people and their councillors think ratecapping makes no sense.

In the Tory suburbs and shires, Spring 1985 means bleating lambs and MORE tax cuts or perks in the budget. For the rest of us it will mean more to pay for our few remaining pleasures.... as usual! This country has always been split into rich and poor, but this government is committed to making the division even greater.



Lets look at who's who in Thatchers Britain. In Feb 1985, Debrett's Boast to their advertisers is that the 43,000 top people they list - own 75% of the land and 84% of the wealth of this country. Where's the sense in that? It leaves 55,000,000 of us to share 1% of the land and 16% of the wealth! You'd think that was bad enough wouldn't you, but this apparent isn't good enough for Margaret Thatcher.

For the first time since the war (W.W.2, that is) the rich have got even richer at the expense of the poor half of the population.

10,000 farmers (all millionaires!) receive half of Britain's agricultural subsidies! Even Conservative MPs are now concerned that there are small farmers going bankrupt every day because of their own governments crazy notions and policies.

For us who live and work in SE1, the Inner City reality is an increasingly harsh one. More corrugated iron, poorer housing conditions, less work and more unemployment, more DHSS hassles for anyone receiving Benefits, fewer services for the young, elderly, sick or the disabled. There is more decay, despair and a growing discontentment.

Ratecapping Lambeth, Southwark, ILGA and the GLC makes no sense at all. At a time when the opportunities for a decent life are diminishing for large sections of our community, we need more resources and help not less!

All the experts now agree that ratecapping won't even save any money! Less services will cost us more, where's the sense in that? This week Frances Morrill, leader of ILGA, reminded us that 1/3 of Inner London's primary school children have both parents unemployed, 1/3 the areas families qualify for free school meals. Lambeth and Southwark are amongst the 10 most deprived areas in Britain. Quite clearly, ratecapping us makes no bloody sense at all. And yet, we are at the top of Maggies ratecapping hit list. All she has to do is walk across Westminster Bridge to see what a nonsense her policies are!

Last year, Heseltine failed miserably to turn, Liverpool into a Garden City, this year he's turning Cambridgeshire countryside into a concentration camp for cruise missiles. Whatever next?!!



MEMORIES FROM THE PAST!

Here's a photograph to tax your memory! It was taken in Roupell St. outside Peabody (Duchy St.) Estate in 1926. The Speaight Family (William Speaight still lives on the Duchy St. Estate and gave SE1 this photograph) are to the left front of centre.

Who are the others? Where are they now? What was the reason for the photograph? Do you recognise yourself in the photo? Write and tell us about it. We'll print all correspondence in the April issue of SE1.

Write to SE1 12, Meymott St. London SE1.



THE LORD CLYDE PUB



This photo of the Lord Clyde pub in Ayres St, formerly Whitecross St, at the Borough, was taken in 1922. The licensee EJ Bayling, whose name is in tiles on the pub, is at the back of the photo. On his far right is his daughter, with her hair in pony-tails, held up by her mother.

It was the daughter, now over 60 years old, who returned to the pub before Xmas and gave this photo to the present licensees Lucy and Michael Fitzpatrick. She was able to testify that the pub remains almost exactly as it was over half a century ago

except for the iron grille on the doorway. We wonder if anyone recognizes themselves in the photo?

The pub today remains very popular locally. It has been in the same family for 29 years. Denis, Michael's father, held the licence for 25 years before passing it onto his son and daughter-in-law who provide a very friendly atmosphere where you can enjoy a pint of real beer, or whatever is your favourite tippie. We can also wholeheartedly recommend the lunchtime food which must offer some of the best value pub food in the SE1 area.

THOS. E. DAVIES & CO. (TOMS)

Newsagents, Confectioners, Tobacconists, Grocers, Off-Licence

137 SOUTHWARK BRIDGE ROAD, S.E.1

Telephone: 407 4680

OPEN EVERY DAY

Monday to Friday until 8.00pm

Saturday until 7.00pm

Sunday until 1.00pm

John Lee Garden Bacons School

A new Nature Garden on the wasteland between Bacons School and Leroy Street is to be made by the pupils and named John Lee Garden, in memory of a teacher who died three years ago.

The School asks that local residents guard the area against dumping of rubbish especially at weekends so that they can try and attract a bit of wildlife back into the area. They plan to have a bird area where birds will be able to feed regularly in the winter and bushes will be planted to give food. A main garden will be planted with shrubs and flowers to attract wildlife.

The School would like to know about the history of the local area and the site in particular. What was there before?

If you can offer any help or advice please contact Mr Leonard at the School on 237 6018.

Lois Acton School Governor

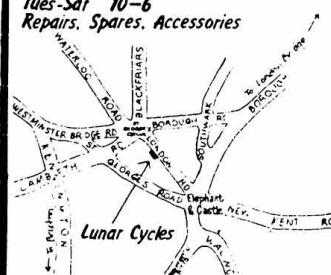
SE1 EDITORIAL GROUP

Sally Howe; John Howes;
Margaret Schofield; Dave Scott;
Peter Simmons; Keib Thomas;
Gerry Vignola; Paul Wheeler.

Lunar Cycles Bicycle Repair Co-operative



13 London Road, London, SE1
Tel. 01-261-0602
Tues-Sat 10-6
Repairs, Spares, Accessories



LOCAL HISTORY IN WATERLOO

DO YOU REMEMBER WATERLOO
BETWEEN 1900 and 1939?

A group at North Lambeth Day Centre is putting together an entry for the London Weekend Television Local History competition and we would be grateful for your help.

If you have any old photographs or would be willing to come and talk to us about your memories of Waterloo during that period, particularly if you knew the General Lying-in Hospital in York Road or the Union Jack Club in Waterloo Road, we would love to hear from you.

We can arrange transport and you can be sure of a warm welcome.

Please contact Gaynor Flint or Simon James at North Lambeth Day Centre, St. John's Crypt, 73 Waterloo Road, SE1.
Tel: 261 9622.

We look forward to hearing from you.

Volunteer Drivers needed

Stephen's Club, a therapeutic group of blind people in Bermondsey and Rotherhithe, needs one or two volunteer helpers to drive a minibus or to help in general. Only one evening per month is essential, but more involvement is welcome. Please contact Stephen Clive on 407 5344 or Connie Hockley on 237 6644.

GREETINGS TO SE1 READERS



Edward Henry House Co-operative

23 Edward Henry House
Cornwall Rd, London SE1 8YE

COLOMBO STREET SPORTS AND COMMUNITY CENTRE



MORE FOR YOUNG PEOPLE!

Opening soon our new Youth Floor, for Junior and Senior Clubs, with special activity nights for those who wish to learn particular skills.

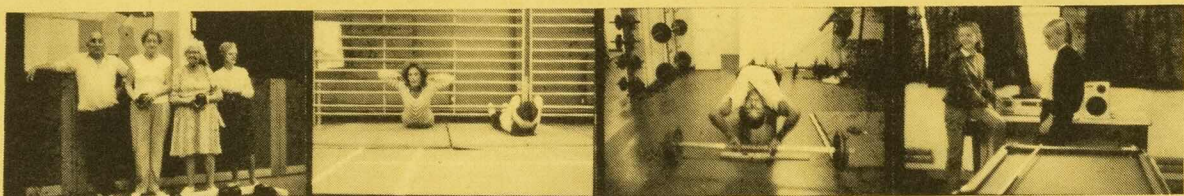
If you are of a sporting nature then why not come and join in with the many sports activities which run over 7 days a week, including:

GYMNASTICS ROLLER-SKATING TABLE-TENNIS KARATE BADMINTON SOFT-TENNIS

or join one of our 5-a-side football teams, training nights Tues.& Fri.

Don't forget we will be running an Easter Holiday Playscheme from Tues. April 9th - Fri. April 19th, watch out for details.

For further information on all youth activities, please contact Ros at the Centre. Any parents who feel that they'd like to work in a voluntary capacity, especially when the new Youth Floor is open, again, please contact Ros, either by ringing 261 1658 or pop in for a chat at the Centre.

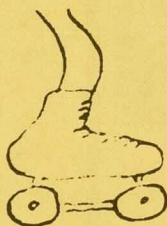


NOW OPEN AT WEEKENDS!

SATURDAY

Roller Skating - Family Session 10.15am-12noon
ALL WELCOME

Bookable badminton and table tennis,
please ring for details.



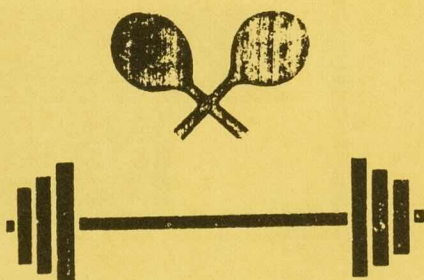
Weight-training room open for proficiency card holders - 10am-4pm

SUNDAY

Local Residents badminton - 11am-2pm

Hapkido (Martial Arts) - 11am-1.30pm

Bookable badminton and table tennis,
please ring for details.



Weight-training room open for proficiency card holders - 10.30-4pm

IF YOU HAVE ANY IDEAS FOR WEEK-END ACTIVITIES AT COLOMBO STREET PLEASE
GIVE US A RING, OR DROP IN AND SEE US AT THE CENTRE.

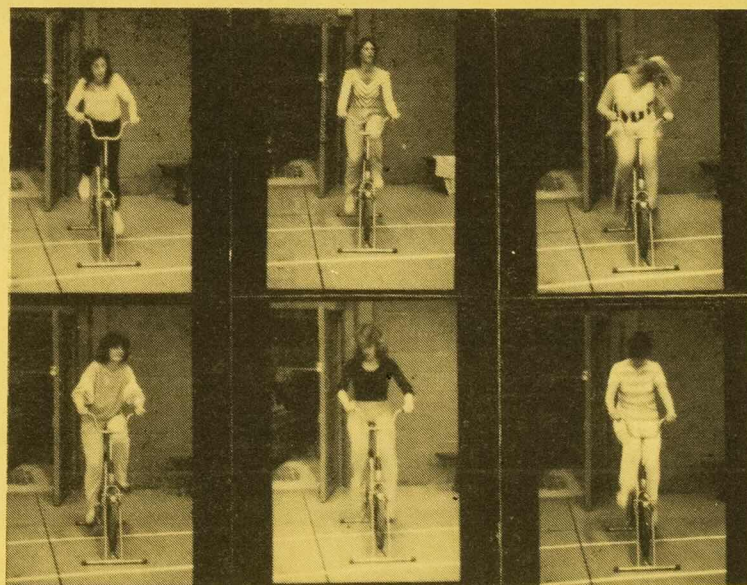
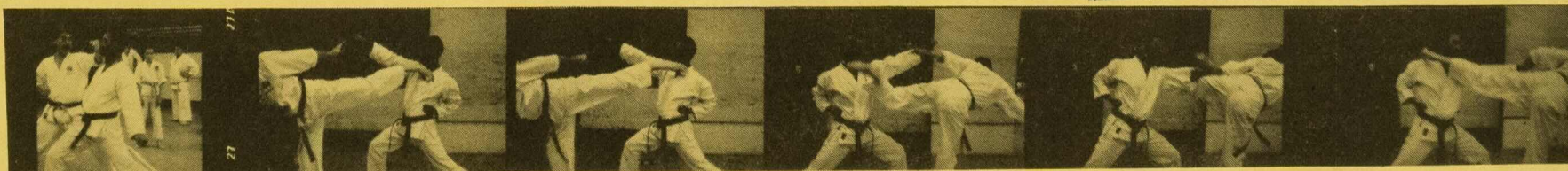
DID YOU KNOW?

WE HAVE ROOMS FOR HIRE for T.A. meetings, Union meetings and a host of other things. Cost is £2.50 per hour. ALSO for parties, weddings etc. our Main Hall is an ideal venue. Special rates for local residents - £10 per hour. Contact Ros or Tom at the Centre on 261-1658.

JOGGING & ROAD RUNNING:

Use may be made of the Centre's changing and shower facilities.

We run Circuit Training classes for men on Mons. & Weds. 5pm-7pm. ALL WELCOME



'GALS' - KEEP-FIT

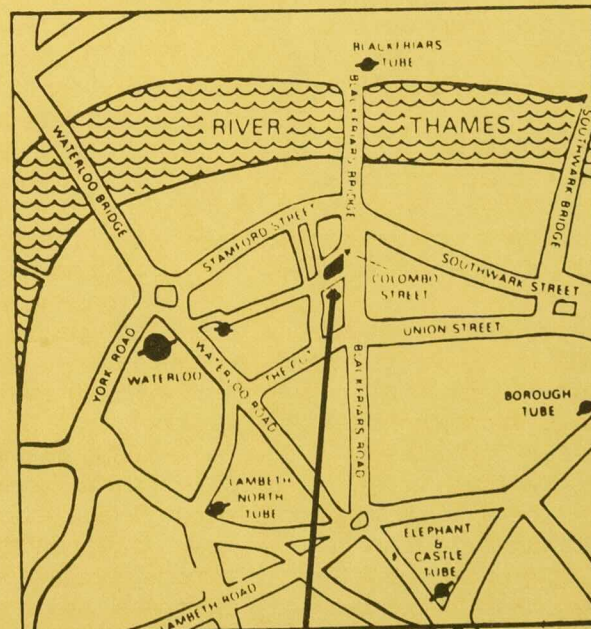
KEEP-FIT MONDAYS 12noon-1.30pm
KEEP-FIT & EXERCISE WEDNESDAYS 7pm-8.30pm
WOMENS MORNING OF SPORT FRIDAYS 10am-12noon
(creche facilities available Fridays)

WHERE WE ARE!

By underground/main line:
Waterloo or Waterloo East
Blackfriars

5 mins walk

By bus:
Routes 70, 76, 149: Stamford Street
Routes 68, 188, 1, 176: Waterloo Road
Routes 45, 63, 141, 151,
184, 109, 17: Blackfriars Road



For more INFORMATION, ring 261-1658. Come And Join Us!

RATE-CAPPING

could mean this centre
CLOSING

Advice

Trips and shows

Minibus

Work with tenants

Legal help

Jumbles

Lunches

Pensioners clubs

Meeting place

Fighting for new housing

HELP SAVE YOUR LOCAL SERVICES -- COME IN
AND SIGN THE PETITION TO SAVE THE CENTRE
-- AND SEND A LETTER TO THE GOVERNMENT.

WATERLOO ACTION CENTRE

The fight to safeguard adult education in inner London.

The adult education service provided by the Inner London Education Authority is gravely threatened by the Government's plans to limit local government rates.

Any cut in London's education budget imposed by the Government would be likely to fall very heavily on adult education because it is not statutorily protected.

ILEA's 21,500 adult education classes cost only £35m a year (4% of ILEA's total budget).

Quality of Life.

More than a quarter of a million students are enrolled annually and the contribution that the service makes to the quality of life in London and of Londoners is incalculable.

In recent years the service has responded rapidly to such needs as adult literacy and numeracy, English as a second language; education for the unemployed and ethnic minorities.

Special Classes.

Altogether, over 4,750 classes are provided for special needs in hospitals, hospices, day centres, residential homes for the elderly, centres for mentally and physically handicapped, nursery centres and clinics.

Hospitals.

Over 400 classes are run every week in 57 hospitals, offering a wide range of

crafts, languages and history.

Prisons.

Over 500 classes a week are run in the 5 London prisons. These classes are a vital link for prisoners with the outside world, and provide an essential part of their rehabilitation.

The Arts.

Over 90 choirs, orchestras, drama clubs and other cultural societies are affiliated to Adult Institutes, with the Institutes providing tutors and accommodation and other facilities. This partnership with voluntary agencies offers a unique enrichment to the cultural life of the capital.

Concessionary Fee.

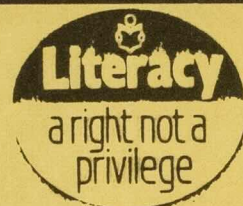
The concessionary fee of £1 enables over 67,800 people (1 in 3 students) to continue learning when they would otherwise be unable to afford it. This figure includes:

26,600 pensioners, 16,800 unemployed, 4,300 Supplementary or Family Income Benefits recipients, 11,000 on literacy, basic education and English as a second language courses and 9,100 other people on low income.

These statistics illustrate just part of the contribution which the adult education service makes to the personal development, and cultural enrichment of a large section of the public of London.



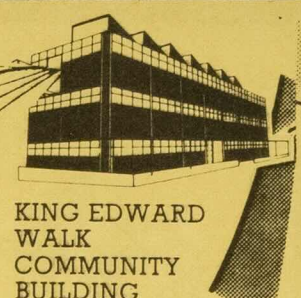
If you think this is worth fighting for, contact your M.P. immediately.



Join us!

Learn English

تعلم اللغة الإنجليزية
أنت تعلمني أنا أتعلم



KING EDWARD
WALK
COMMUNITY
BUILDING



These people are working in the Open English Workshop. Drop-in workshops are something new in the Basic Education and English as a Second Language Department at Morley College.

Students work on a wide range of topics - reading, writing, spelling, essay writing, letter-writing, filling in forms, punctuation and study skills. Tutors are there to plan a programme of work with each student.

There are also Basic Maths workshops for students whose first language is not English.

The workshops are open three days a week in the Community Education Building. See below for times.

Writing, Reading
English as a second Language
Workshops

Basic Maths and
For students whose first
language is not English.

Open: Tues 10.00-4.00
Wed 10.00-8.00
Thurs 10.00-4.00

Open: Tues 1.30-3.00
Wed 6.30-8.00

Contact:- Katherine, Basia
or Helen. 928 8501

Century House

The owners of Century House have come up with new proposals for the area around their office block on Westminster Bridge Road.

As before, they want to add a whole new floor to their office giant, by enclosing the ground floor area (the building at present stands on stilts, so pedestrians can walk underneath it).

As before, they want to close the end of Pearman Street and make sure that all traffic to Century House has to arrive via Pearman Street.

And they want to put in a second large underground car park - they already have one under Century House itself.

On the site of the old Tower public house, they propose a piece of open space facing Westminster Bridge Road/Morley Street. And around this open space - half on the Pearman Street frontage and half along Emery Street - they propose a two storey development of 11 shops.

Local residents will be meeting shortly to consider these plans in more detail. For more information, contact Steve Barran or Christine Thomas at 633 9291.

