

# SEL

ISSUE 31 APRIL 1985 FREE COPY

Photo: Vivienne Reiss

## HEALTH AUTHORITY DEFIES CUTS

West Lambeth District Health Authority has now taken an important stand against government imposed cuts in the National Health Service. It has rejected the 11 million pounds of cuts proposed by the South East Thames Regional Health Authority over the next ten years, which would mean a 10% reduction of services in real terms, the closure of Tooting Bec Hospital for the mentally ill before alternative provision becomes available, shutting the South Western Hospital in Brixton and reducing bed provision at St Thomas Hospital by some 200.

## Residents Lobby

On Tuesday, 26th March, some scores of Lambeth residents and hospital workers turned out to lobby the special meeting of West Lambeth District Health Authority called in order to discuss the Authority's Strategic Health Plan for the coming 10 years.

Three options were under discussion, the first two involving cuts to services. Members of the Authority voted to accept a variation of Option C, which rejects cuts and called for "maintaining and developing the services for all the care groups while simultan-



Lou Shepard hands in letters in support of No-Cuts Option to the Health Authority Administrator

eously developing the resources needed in the community to enable the Authority to adopt more progressive ways of treating the elderly, the mentally handicapped and the mentally ill".

This decision marks a real success for all those involved in the campaign against cuts in the health service.

In its consultation exercise leading up to the meeting, the Authority had received over 100 detailed responses to the Plan which supported Option C. The Waterloo Health Campaign alone handed in over 160 letters in support of the No-Cuts Option to the District Administrator of the Health Authority at the end of February.

Steve Bubb, Lambeth Councillor and member of West Lambeth Health Authority said: "This special meeting was a landmark in our fight against the cuts in Lambeth's health services.

The consultation process, in which many groups from Waterloo took part, showed that people want better services and not cuts."

## METAL BOX closes the lid on Gt. Guildford St. Plant

## JOBS LOST

The Metal Box cheque-printing factory in Great Guildford St North Southwark, located at its present site since 1797, is to close at the end of June with the loss of 79 jobs.

This follows a large number of redundancies in recent years and again at Xmas last year, which everyone thought at the time would be the last. This

will be a real blow to an area of high unemployment since the majority of the workers at the plant live locally. Some families have as many as three or four members employed there.

The closure is the final outcome of the long period of disinvestment by the company at the plant leading to a big fall in orders. Some 10 years

ago or so, the factory had over 700 employees working at the four-storeyed building. At present production is confined to less than a single floor.

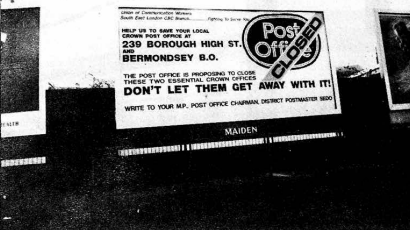
Metal Box has invested in new laser printing technology at plants outside of London, but it has failed to modernize at Great Guildford Street. What work remains here will be tran-

sferred to these plants.

For the time being, 35 office staff will remain employed at the factory though it is rumoured that the building may soon be sold to a property company. Will we eventually see yet more offices along Southwark Street?

*The local newspaper /*

## Union of Communication Workers



### THE BATTLE IS STILL ON SE London C&C Branch

Throughout London on 26th March, Post Office Counter and Clerical staff held a half day stoppage against Post Office plans to cut its national counters network. At the Boro Post Office, counter and clerical workers were joined by pensioners in a picket against the closure of two Crown Post Offices in North Southwark. This marks a further successful event in a continuing campaign against closures.

## COOPER'S NATURAL FOODS

17 LOWER MARSH, SE1 PHONE 261 9314

8.30 to 5.30 MONDAY TO FRIDAY

LUNCHTIME TAKE-AWAY SUPPLEMENTS  
BULK GOODS HERBS WHOLEFOODS

Homemade pizzas, quiche, pasties and cakes  
Fresh bread and free-range eggs.

De-luxe muesli £1.18 per kilogram  
Mexican honey 78p per pound  
Barleycup 99p large  
Olive oil (virgin) £2.90 per litre



## CROSSWORD ANSWERS ★★☆☆

Someone did it! Despite printing errors on several numbers and some pretty unusual clues Kate Armstrong, who lives at Edward Henry House, successfully completed the SE1 crossword.

Kate now wins five pounds and becomes the proud owner of an SE1 T-Shirt. Kate has only recently moved into Waterloo, so shame on all you long established residents.

### ACROSS

1. Bankside
2. Mint
3. Place
4. Nelson
5. Windmill Walk
6. Union
7. Blackhorse
8. St Georges
9. Walk
10. Clink
11. Leroy
12. Royal
13. Short
14. The Cut
15. America
16. Waterloo
17. Copperfield
18. Upper
19. Bowling Green
20. Nicholson

### DOWN

1. Murphy
2. Redcross
3. Coin
4. Fort
5. Great Maze Pond
1. Blackfriars
2. Kennington
3. Newnham
4. Law
5. Cole
6. Doon
7. No clue, go to 8
8. Sawyer
9. Newcomen
10. Long Walk
11. Mitre
12. Ground
13. Cole

14. Leake
15. Dunton
16. Greet
17. Score
18. Lambeth
19. Guy
20. London Road
21. Pope
22. Cole
23. Stamford
24. Slip
25. Walk
26. Johanna
27. Coral
28. Wisney
29. Globe
30. Gray
31. Bear
32. Road
33. Emery

## COIN ST. - UPDATE

SE1 readers are reminded that they are welcome to visit the Design Centre behind the National Theatre. Dates of forthcoming local meetings can be obtained from Theresa or Gwen on 633 6402. Meanwhile here is the latest report on the implementation of the AWG scheme.

### DEMOLITION

The old Boots office and warehouse has been demolished, and the site was handed over to Coin Street Community Builders on 1st April. The old Eldorado cold store is half demolished, as is Gabriels Wharf. Work on Nelson's Wharf has started.

### RIVERWALL AND WALK

The old concrete riverwall has been clad with bricks, and new fenders put into place. The piers in front of Nelson's and Stamford Wharves are being refurbished. CSCB has received approval for its detailed plans for a twenty five feet wide riverwalk linking the existing walkways in front of LWT and Kings Reach. Construction, funded by the GLC, starts in August and should be completed within two years. Gleniffer Finance Corporation are refusing to give up their rights to a small part of foreshore needed in front of Princes Wharf and so a Compulsory Purchase Order inquiry will take place in May.

### PARK

A meeting open to all local residents will look at the final plans for the park linking Stamford Street to the river. The meeting is at 7pm on Wednesday 17th April in the Design Centre at 99 Upper Ground. The laying out of the park is due to start this autumn and be completed by the Spring of 1987.

### HOUSING

CSCB has received approval of its detailed plans for 56 new homes with gardens on the existing Coin Street car park.

Building firms will be asked to tender for the construction contract and work should start on site this summer.

### INDUSTRY AND SHOPPING

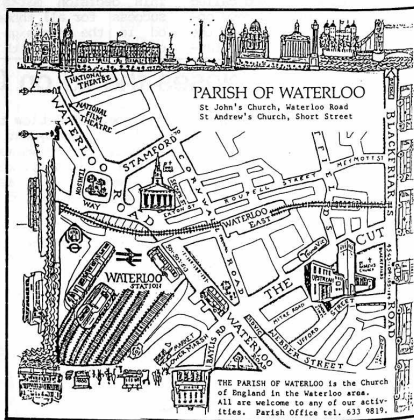
A local meeting to discuss the industry and shopping plans will take place whilst SE1 is at the printers. If you would like to come to future meetings please contact Gwen on 633 6402.

### COIN STREET COMMUNITY BUILDERS

Liz and Linda have recently joined Theresa, Gwen and Iain on the staff at 99 Upper Ground. Our Chair, Fred Miller, has been taken ill and is staying with his daughter in Erith whilst receiving treatment at the Brook Hospital (Shooters Hill). Fred has been one of the most active campaigners for housing on Coin Street over the past ten years as well as playing a leading role in the Association of Waterloo Groups, the North Lambeth Law Centre, Waterloo Action Centre, the Amenities Group and countless other projects. He has also been a veteran distributor of SE1 over the years and we are sure that all readers will wish him a speedy recovery.



Get well soon Fred



## Community Hall to open in Bermondsey

After some years of a lot of effort, The Whites Grounds, Tanners and Tyers Community Association, made up of the three estates of those names, off Bermondsey St., will take possession in early April of their new community Hall at 1 Tanner House, Tanner St.

The building, known as the old Barber's Shop, has recently been refurbished by Southwark Council. The GLC has given money for furniture and fittings and also to employ a community worker for the next year. The Hall will function as a community centre with mums and toddlers and youth groups, drop-ins, and other activities are planned.

Further information from the Chairperson of the Association, Mrs Reasonard, at 105 Whites Grounds.

## WHAT'S ON AT EASTER

SOUTH BANK CONCERT HALLS

London Sinfonietta's "Bean Feast", April 15th-20th, with puppetry; all ages but not younger than six in concert hall.

Free events in the Queen Elizabeth Hall foyer including Blowzabella (playing traditional folk instruments) and the Da Silva Puppets presenting Peter and the Wolf, 15th and 16th at 12.30 and 6pm; Blowzabella and Marionettes, 17th at noon and 6pm; Blowzabella and puppeteer Barry Smith, with the Music Dolls, 19th at noon and 6pm, 20th at 12.30 and 6pm.

Also concerts of popular music, two by ILEA school-children, seats from one pound. Apart from Bean Feast, a Gerard and Jean concert for 5-10's with parents, music, narrative, audience participation, April 14th at 3.15pm, seats one pound 85.

Among Royal Festival Hall exhibitions, Eggs for Easter, decorated, April 3-8.

## NO SALE!!

### The strange case continues

There have been dramatic developments since we reported in the last issue of SE1 on the conduct of St Olaves, St Thomas and St John's United Charities. On Monday the 18th March, the 5 trustees appointed by Southwark Council, together with the Vauxhall MP Stuart Holland and Southwark Councillor John Fowler, went along to the offices of the Charity in Druid St to formally sign the minute book and become Charity trustees.

Mr Pollock, Clerk to the Charity, refused to let them do this although all trustees have been legally appointed. He even refused to let Councillor John Fowler see the minute book of the trustees' meetings which should be available for public inspection!

Such obstructive action provided the evidence needed by Southwark Council and they are now seeking an injunction against the Charity. If granted, the injunction would prevent the Charity disposing of any assets or property until they recognize the legally appointed trustees.

### SALE IMMINENT

Such an injunction is urgently needed as the Charity intends selling St Olaves Mansions at the end of March. Despite expressing serious interest in buying the property, it took the Charity two weeks to send details to the London & Quadrant Housing Association. The Agents gave the Association only ten days to decide whether or not they wanted to proceed and as a result they couldn't take it any further.

The tenants of the St Olaves Mansions meet on 26th March, at a meeting sponsored by the local Labour Party, to form a Tenants Association to protect their interests.



Pictured are the 5 Trustees appointed by the Council & Stuart Holland & Cllr Fowler

### APOLOGY

In the last issue of SE1, we stated that no reports had been received by the Charity Commission for St Olaves, St Thomas and St John United Charities since 1972. It now appears that the Charity has made returns for this period and SE1 apologises to the Trustees. It is worth noting, however, that the Educational Foundation of St Olave, St Thomas and St John, also administered from 6-8 Druid St, has not made any reports to the Charity Commission since 1972.

The Annual Report and Accounts for 1984 of the United Charity area available and make interesting reading. In the year ended 31st March of 1984, the Charity had total income of 165,386 pounds. Of this, some 50,995 pounds went on management expenses (31%). Repairs at St Olaves, which in a recent letter to all tenants the Chairman of the Trustees claimed was extremely expensive to maintain, amounted to 5,995 pounds.

And what about pensions to the elderly and general help for the poor of Bermondsey? Well, in 1984, that came to the grand total of 14,916 pounds, or 9% of the total income. Net rental income from the flats amounted to 14,544 pounds for that year.

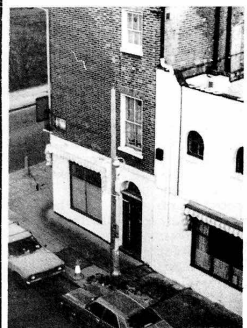
## LAMP- POSTS

Most of us never give that much thought to our lampposts. Unlike dogs which apparently have a strong attachment to them, we humans don't seem to care too much as long as they are working.

Well, maybe not, because Lambeth have managed to generate quite a lot of bother by putting new lampposts in Aquinas St, Duchy St and Coin St, in Waterloo. These streets form part of a conservation area and for as long as anyone can remember have had the traditional yellow lampposts (like most Waterloo streets). Now a bit battered, everyone had grown used to them - even the one in Coin St which resembles the Leaning Tower of Pisa.

Now it looks as if they could all become something of the past. Lambeth have been installing new lampposts and so far seem to have every intention of ripping out all the old lampposts.

Why? Lambeth Public Services claim that the old lampposts are a hazard. Yet can this be true of all of them? And even if it is, why can't some effort be made to repair them?



The Waterloo Community Development Group has taken up the issue and the two local Councillors Terry Rich and Kath Connolly have agreed to investigate.

What makes some people suspicious is that Lambeth have no plans to remove the traditional lampposts in Roupell St and Whittlesley St. Can there be one rule for streets with council tenants and Housing Corporations and another for streets with a large number of wealthy owner-occupiers? Surely not. Readers will be kept in touch with developments in the next issue.

## "your local pub" THE LORD CLYDE THE BOROUGH S.E.1

TRUMANS BEER

Denis Molly Michael Lucy

Hot & Cold Food 407-3397

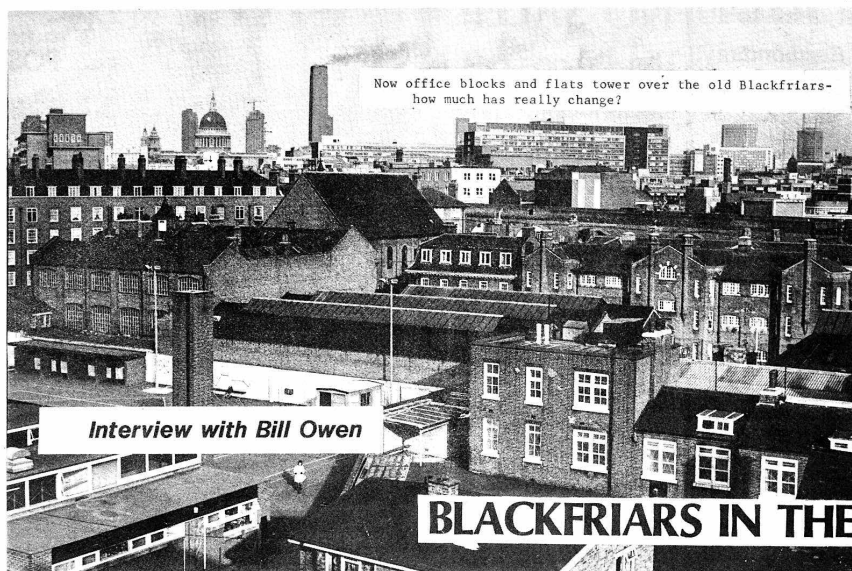
## LABOUR working for you locally...

TERRY RICH &  
KATHY CONNELLY  
your LABOUR councillors  
on Lambeth council

Surgery

EVERY THURSDAY EVENING 6.45-7.30  
at China Walk Tenants Hall,  
Lambeth Walk, SE1





Now office blocks and flats tower over the old Blackfriars - how much has really change?

Photo: Blackfriars Photography Project

## Interview with Bill Owen

# BLACKFRIARS IN THE 1920s

Local resident Bill Owen has lived in Blackfriars and North Southwark all his life. In the first of two parts, Bill remembers what life was like in the late 1920's in Blackfriars.

I was born at 98 Broadwalk, Blackfriars, in 1912. I went to Hatfields St School and I left at the age of 14. My dad was a sawmill labourer. He worked at Surrey Docks. To get there and back he had to walk because he didn't have the money for his fare. This was in the middle of the 1920's. He worked there until the depression came in 1926 when he lost his job. Then he looked locally for casual work. He found work sometimes, on the railway at Blackfriars where men congregated and a bloke come down and he said you, you and you. That's how things were. He worked casually like this for quite a few years, mainly owing to the Depression. How we managed, as far as I can recall in Webber Street Blackfriars there was what is referred to now as a workhouse where the residents were given chits to get such things as black bread, treacle, odds and sods, to help them survive. Then it was run by the LCC.

### A JOB AT LAST

Mum I remember got herself a job working in of all places the London Hippodrome in Leicester Square. She worked as a dresser for all the artists appearing on the shows- Jack Buchanan, for instance.

Right out of the blue I got a job through a young friend of mine. It was in Oxford St, at Nurdung and Peacock. It was a wholesale food place. I got a job there, from 8 till 6 and Saturday morning. That was the first job I had assisting

a dutchman, a master butter maker. Something went wrong somewhere and I was back in square one after a year, a year and a half. I was about 16. So we go on the dole. The dole office was in Walworth Road, where there is now a Post Office. The dole queue extended from the dole office to Manor Place which is the next turning up. If you had to sign on a 9 o'clock, you had to be there at 8 o'clock, come rain come shine. And you had to walk there. You'd sign on and on a Friday he'd give you the half a quid, 7 or 8 bob went to mum and a couple of bob to me.

### FIXED PRICE LIGHT

At the time there were no big flats. There were places which are still around, Peabody Buildings, Arcadia Buildings, Quinn Buildings. You also had the LCC. Our house was under apriate landlord. Mum paid 10 and 6 a week all her life. Before electricity came in around 1926 we had gas which was mantle called Veritas which you bought in the local shop. A penny piece went in the gas meter. When they converted this to electric light I think it was a shilling and when that shilling ran out that was it, you had no light. Fixed Price Light Company was it.

### A TIGHT SQUEEZE

In those days we lived in a four-roomed house, in a terrace. There was mum, dad, Sid my step-brother, me, Grandad and Uncle Bill. Where did

they all sleep? I know Grandad slept in his little room on the ground floor, me and Sid slept together in a bed in a room on the next floor. I know Uncle Bill slept right at the top and took a candle up there. Where did mum and dad sleep? I think they got in with us once we were asleep. I'm almost positive of that, there was nowhere else to go. They couldn't have got in with Uncle Bill because he had a single bed and they couldn't have got in with granddad because he would have growled his head off. The other room was the kitchen and to eat in and everything. There was no such thing as baths, toilets were out in the backyard, water as well. Mum had a shed in the backyard where there was a big copper where she did her washing. The nearest public baths was Lavington Street off Southwark Bridge Rd. I think that used to cost two-pence. There was another one down at Manor Place. It was always on a Saturday. It was a madhouse.

### RICH REWARD?

Then I got another job. There was a job advertised in Walworth Rd Labour Exchange for a machinist at Deakin St. I was around about 16 or 17 and had been on the dole for about a year. Having got the job I was paid on a piecework rate. It was on a drilling machine. At one time I put up the handle, took the job out and wallop, the whole lot took it off. I went to Guy's hospital in a van. I remember as if it were yesterday. A bloke brought me there and said I'm sorry I can't stay Bill he knew I brought you here. When I came out of hospital dad put in a claim for compensation. The rich reward of fifteen pounds appeared from the solicitor for the loss of a finger and I lost the job as well. Out of the fifteen pounds I remember I got a new suit.

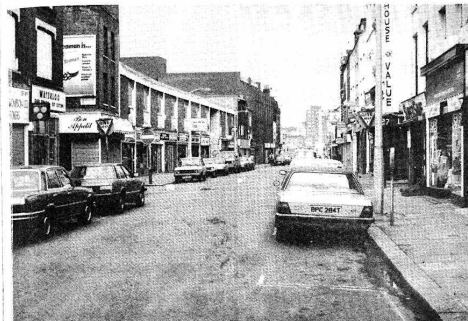
Next month, Bill Owen describes the shops, picture palaces and music halls of Blackfriars.

!!! COMING SOON !!! 27TH JULY

The 2nd Boro Festival!

WATCH THIS SPACE

# WATERLOO IN THE 1980's



Left: Lower Marsh on a Saturday afternoon - Need we say more?

Below: Sign of the times in Lower Marsh.



## VIEWPOINT

An area without a high street full of shops is an area without a heart. If that's the case, then Waterloo is heading for a massive heart attack. Lower Marsh/The Cut have for years suffered the slow decline caused as useful retail shops (chemists, food and clothes shops) are replaced by non-retail uses (restaurants, building societies, offices).

The regular parade of shops has been broken by the imposition of large (and usually empty) office developments such as Truscon House. A High Street that cannot supply all the shopping needs of a family will never be healthy or busy.

The street market should be the 'jewel in the crown' for Waterloo shopping. Talk to anyone who has lived in the area for some time and they will remember with fond affection 'The Cut'. In its heyday it had over 300 stalls and was probably the best street market in London.

Now, sadly, the street market is a disaster. Few of the traders live locally and fewer still care about providing a service outside the weekday office lunch hour period (although there are notable exceptions to this attitude). The vast majority of stalls sell cheap clothes and nothing else. Any suggestion of a varied and lively street market is non-existent. In a recent guide to London street markets, Lower Marsh/The Cut was rated as a total non-event.

## alternatives

And yet it needn't be like this...and there still might be time to change it. Lambeth Council, in its review of the Waterloo District Plan, is proposing a strict policy to prevent any change of use from 'retail' to 'non-retail'. Well and good; yet the damage to Lower Marsh/The Cut as a shopping street has gone deep, and more positive/promotional policies will be needed.

It first needs to be said that the street market does not have to languish in its present state. All around Central London there are examples of vibrant street markets and shopping streets that do not have the advantages Waterloo possesses. Inverness Street in Camden Town is an excellent example of a small street market that provides for local need and thrives despite its closeness to Camden Lock. Berwick Street market is an example of a street market that can continue catering for commuters and local use very successfully.

Lambeth Council as the organisation that issues licences for the street market could start to take a more imaginative line and promote its use outside the lunch hour. If the present traders are not enthusiastic they why not issue new licences as there always seem to be empty places. If the street market can be improved and begin to offer a more varied choice then the whole street could improve. Why not

## action needed

What is clear is that it will need co-ordinated action to improve the shopping facilities. Major traders and the Council got together in Brixton to improve shopping there with some degree of success. Why can't the same happen in Waterloo? Further such an approach could be extended to include major organisations such as British Rail (who could help by providing access from the station to Lower Marsh and promote the market in the station) and the Old Vic. Equally, the Association of Waterloo Groups could provide much needed local views and suggestions.

Such a grouping would form a very powerful lobby which could aim to encourage retailers to provide what is desperately

needed in Lower Marsh: a decent supermarket (Sainsbury's have their Head Office in Waterloo...)

Sometime next year a new range of shops will open along the Colonnade to the station in Waterloo Road. Lambeth Council put up £150,000 in partnership with British Rail to create (if we believe the promise to provide retail shops of use to the local community) a much needed extension of the shopping area in Waterloo... Something can be done to improve our shopping in Waterloo: when are we going to start on Lower Marsh/The Cut...?

## any suggestions

Do you agree with these views about Waterloo shopping? Do you have any suggestions to improve shopping facilities? Why not write and let us know. Write to SE1, 12 Meymott Street, SE1.

## COIN STREET COMMUNITY BUILDERS

invite you to visit the Design and Exhibition Centre and temporary park at 99 Upper Ground, SE1 (behind the National Theatre). For further information on Coin Street and the Waterloo area phone 633 9291. The Centre and Park were funded by the Greater London Council.

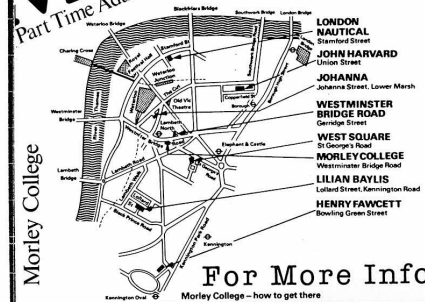
### WATERLOO COMMUNITY COUNSELLING PROJECT

ADMINISTRATOR DEVELOPMENT WORKER (18 hours)  
W.C.C.P. urgently need a worker to promote the use of the project for local people and agencies in SE1 and SE11. The post requires knowledge of good mental health practices, community development and administrative skills. Some evening work is involved. Post funded for one year (with probability of refunding). Salary approximately £4,950 inclusive.  
Further details from:  
KATRINA MCCORMICK  
W.C.C.P.  
ST JOHN'S CHURCH  
WATERLOO RD  
LONDON SE1  
TEL 01-433 0851  
Closing date for application Friday 15th April  
W.C.C.P. IS AN EQUAL OPPORTUNITY EMPLOYER

# MORLEY COLLEGE

## SUMMER CLASSES!

Part Time Adult Education Day and Evening Classes



### Adult Education

61 Westminster Bridge Road, SE1 7HT  
01-928 8501

1985

### New Summer

### Day and Evening Courses

**Third Term**  
22nd April to 22nd June  
(half-term: 27th May to 1st June)

**Day and Evening Courses**  
22nd April - 22nd June  
24th June - 26th July

For More Information Tel.928-8501

### \* CLASS FEES FOR NEW STUDENTS:

|                          | 3rd Term | 4th Term |
|--------------------------|----------|----------|
| 1 hour a week            | £2.00    | £1.60    |
| 1 1/2 hours a week       | £3.00    | £2.40    |
| 2 hours a week           | £4.00    | £3.20    |
| Each additional 1/2 hour | 50p      | 20p      |

Intensive Courses £4.00-£22.00  
Special short courses 40p an hour.

Students living in Inner London who come within the following categories are entitled to a reduction to £1 irrespective of the number of classes attended:-

- (i) Those aged 60 and over;
- (ii) Those in receipt of family income supplement;
- (iii) Those in receipt of supplementary benefit;
- (iv) Those in receipt of unemployment benefit;
- (v) Those under 18 years of age;
- (vi) Those enrolling in Family Classes;
- (vii) Those enrolling in literacy (including mother tongue), basic education, English as a Second Language and linked skill courses directly connected with the student's special needs.

\* Students should bring proof of their entitlement to the reduction (Payment Book, Forms BR464, UB40).

The College Council does not wish anyone to be prevented from joining classes for financial reasons. Those resident in the ILEA area and unable to meet the admission fees in full should ask to see the Principal, who has discretion to reduce them up to 100% according to needs, and will of course treat the matter as confidential.

Fees will be refunded only when a class fails to form through lack of numbers.

\* Fees for Students not Resident in Inner London: All students not resident in the ILEA area will be charged one and a half times the standard fees for Inner London Residents. Concessionary fees for pensioners, etc., will not apply to outer London students.

### ENROLMENT:

**Main Building:**  
Students can enrol at the Main Branch during College Office opening hours:  
11.45-1.45 2-3.45 7-9  
\*Tues, Wed only in 4th Term  
or at the time of the first meeting of the class they wish to join.

### Creche and Playgroup (Main Branch only)

Creches: 10.12 and 1-3  
10.00-12.30 and 1.30-4.00  
Playgroup: 10.00-12 and 1.00-4.00  
Charge: 50p a session

### Branches: (Third Term only):

Lilian Baylis: 587 1836 (Mon-Thurs after 6pm)  
Henry Fawcett: 735 2780 (Mon and Wed after 6.30pm)  
John Harward: 928 4601 (Mon-Thurs after 6.30pm)  
London Nautical: 928 8174 (Mon-Thurs after 5.30pm)  
West Square: 735 5221 (Mon and Thurs after 6pm)

1985/86 Enrolment Week:  
16th-19th September. Prospectus available in June.

### HOME STUDIES

All students for classes in Food Studies must bring an apron, tea towel and kitchen knife to every class.

### Cookery and Companionship for Older People

West Square/Laura Myers/Tues 10-11/1DQX508T  
West Square/Julia de Waal/Tues 10-11.15/1DQX505T

Classes designed especially for those who enjoy cooking but who may not have the chance to cook very much. The Tutor does the shopping, everyone shares in the cooking, and it does not matter if you have never cooked before. At the end everyone sits down together to enjoy an excellent meal in pleasant company.

### Fish Dishes

Westminster Bridge Road/Joyce Miller/Wed 1.30-3.30/1DW25511T

### Family Fun Food Factory for a Day

Westminster Bridge Road/Sat May 18th 10-12.30 and 1.30-4.00/DM51805

### Cookery for Home Entertainment

West Square/Julia de Waal/Wed 6.30-9.15/1Q2X538T  
Westminster Bridge Road/Joyce Miller/Wed 6.15-8.45/1W2X532T

### BASIC EDUCATION

#### Open English Workshops

Tues and Thurs 10-4/DM5314  
1.30-4/DM5315

Writing, reading, English as a Second Language. An open workshop for those who are unable to attend a regular class or who want extra work. Details extension 156.

#### Maths Workshop

Tues 1.30-3/DM5363  
Wed 6.30-8/MS164

For students whose first language is not English. Details extension 156.

### SCIENCE

#### London's Natural History

Kevin Roberts/Mon 1.30-3.30 and 4-6/1DUX130T

(University Extension Class.) This course illustrated with slides looks at the variety of habitats to be found in the London area and the associated plants, birds and other animals. The second session on each afternoon will usually be a trip to a site discussed in the first session.

#### The Diversity of Nature in Summer

Eric W. Groves/Tues 6.30-8.30/1MX1328T

This illustrated course, for new students and those already attending classes, will examine the various groups of animals and plants likely to be seen during a summer holiday in Britain.

### Social and Community Studies

#### Introduction to Community Work

John Newman/Mon 10-12 and 1-4/DM5X140T

John Newman/Wed 10-12 and 1-4/DM5X140T

These courses introduce the basic theory and practice of community work. They are aimed at volunteers, community activists, and those who may want to prepare themselves for a professional qualification, as well as people in the field who want an opportunity to develop their theory and practice. Students should apply in writing to John Newman.

### LANGUAGES

#### Russian Study Day

Sat 22nd June/DM58003T

Talks, seminars, afternoon song-recital, symphony orchestra concert in the evening, followed by a party.

### HUMANITIES

#### Writers Talking

Wed 10-12

April 24 Victoria Glendinning

June 5 Michael Holroyd - talk on his biography of G. B. S. and Autobiography of a Biographer.

#### The Writer's Skills

Juri Gabriel/Wed 6.30-8.30/1MX2641T

Discussion and encouragement in all forms of writing at all standards.

#### The Novel in Latin America

Olga Kenyon/Tues 2.30-10/DM115X623T beginning April 30th

Borges, Marquez, Carlos Fuentes and Juan Rulfo.

#### Introduction to African and Caribbean Literature

Lilian Baylis/Celia Gibbs/Thurs 10-12/1DB2X633T

#### Biography Today

Olga Kenyon/Wed 10-12/DM2X640T

A course opening with a talk from Victoria Glendinning 'Biography and Lies'. For second week please look at the two biographies of Charlotte Brontë by Mrs Gaskell and Winifred Gerin.

#### The Construction of Heterosexuality - a course for women

Sheila Jeffreys and Rosemary Auchmuty/Tues 7.30-9.30/1MX2688T

This six-week history course which surveys theories of sexuality from Freud and Havelock Ellis to Alex Comfort and socialist and radical feminists. Is sexuality natural or socially constructed? What is heterosexuality and whose interests does it serve? Why have lesbians been stigmatised and discriminated against?

#### The Georgian Age

Hugh Myers/Fri 6.30-8.30/1MX2661T

Britain in the Age of Reason - the age of Walpole, Wesley, Chatham and Clive.

#### A Fresh Look at Lambeth

Lilian Baylis/Brian Biscoe/Tues 7.9/1B2X669T

A series of lectures on original historical research carried out in Lambeth.

#### Current Affairs

Lilian Baylis/Titus Alexander/Wed 7.30-9.30/1B2X660T

A course to discuss the background to home and world news. We will examine connections between issues, different sources of information and why some things are considered important but not others.

#### War in the Modern World

Brian Reid/Tues 6.30-8.30/1UX2659T (University Class.)

This class will look at how technology and changing tactics and strategy have changed the character of warfare since the French Revolution.

### PHYSICAL EDUCATION

#### Health in Retirement

Lilian Baylis/Pat Rowlandson/Tues 10.30-12/1DB11X1218T

Exercises to music in a relaxed and friendly atmosphere. Correct use of the body in daily life will be taught, and exercises aimed at keeping and improving fitness, good posture and good circulation, will be given.

#### Relaxation and Massage for Women

Valerie Cusumot/Thurs 2-4/DM2X1220T

This course teaches students how massage can relieve aches and pains and give relaxation and wellbeing. Please wear loose clothing and bring a large bath towel and a thick blanket.

#### Keep Fit to Music

London Nautical/Sue Wilkinson/Mon 6.7.30/1N11X1232T

Lilian Baylis/Jackie Heyhoe/Mon 7.9/1B2X1313T

West Square/Valerie Shackleton/Tues 7.30-9.30/1Q2X1224T

Shirley Norman/Thurs 1-2/DM1X1232T

These classes use exercises to music to tone up the body, increase mobility and general fitness. They are suitable for all ages.

#### Self-Defence for Women

John Harward/Alison Jennings/Mon 7.9/1H2X1250T

This class continues from the second term but new members are welcome.

#### Women's Sports Morning

Colombo Street/Jenny Thomas/Fri 10-12

We do an aerobic warm-up to music followed by a circuit or badminton, soft tennis, netball, exercise in the multi-gym with a coffee break and chat in the middle. Come and join us. 50p per session.

#### Basketball

London Nautical/Alan Middleton/Mon 7.30-9.30/1N2X1264T

A mixed class for all standards of player.

#### Women's Cricket

Lilian Baylis/Cathy Morawit/Wed 6.7.30/2B11X1217T

Two terms.

Come and join this new class to improve your cricket or learn to play.

#### Netball

Baylis Road/Open Space/Jenny Thomas/Mon 6.30-10/1M11X1272T

For beginners or those who would like to take up the game again.

#### Rounders

Geraldine Mary Harmondsworth Park/Jenny Thomas/Thurs 6.30-10/1M11X1273T

Two terms.

Ever wanted to find a team game which is non-contact, outdoors and uses so many different skills that everyone can enjoy it? Come and learn to play, or play again in a new class.

#### Volleyball

Baylis Road/Open Space/Tues 6.30-8/1M11X1274T

For beginners or players.

#### Learn to Swim

Elephant & Castle Swimming Pool/Deborah Bidde/Pri 2/DM51275T

Two terms.

3.30-4.15 Mother and under 4s - help teach your baby or young child.

4.15-5 Parent and children over 6 - learn with your child.

#### Tennis Coaching

Monday

Lilian Baylis/Bert Stein/Mon 6-8/2B2X1276T

Tuesday

Geraldine Mary Harmondsworth Park/Jenny Thomas/Tues 12-1 (beginners), 1-2 (Anyone who has played before).

No enrolment necessary - 20p per class.

Wednesday

Baylis Road/Open Space/Simon Curtis/Wed 7.30-8.30/2M11X1277T

Friday

Geraldine Mary Harmondsworth Park/Sue Wilkinson/Fri 6.30-8/2M11X1278T

All-terms.

For all standards of player. Balls are provided. Rackets can be borrowed.

### ART

#### Embroidery

Lilian Baylis/Mary Richardson/Tues, 10.45-1.15/1DB2X6X8T

#### History of the Garden

Janis Malcolmson/Thurs 2-4/DM2X121T

# THE South Bank BOOKSHOP

ALL YOUR READING LIST REQUIREMENTS  
AT PUBLISHED PRICES

INCLUDES:-  
Course Books, Cards, Badges, Computing Section, Games, Tapes, Reference, Medical/Nursing, Civil Rights/Law, Sociology, Education, Womens Studies/Sexual Politics, Maths/Statistics, Electronics, Engineering, Media, Management/Marketing, Politics, Fiction, General Paperbacks, Bestsellers, Academic Diaries, Fast Reliable Customer Order Service.  
**LATE NIGHT OPENING.**

PHOTO COPYING

**NEW ADDRESS**  
18 LONDON RD.  
S.E.1.  
PHONE: 928 4701

## SE1 DEADLINE

SE1 is YOUR community newspaper. We welcome your letters, news, details of births, deaths, marriages, poems, opinions etc. Send your contributions to: SE1, 12 Meynott Street, SE1. You can also contact Keib Thomas on 928 8501 or Gerry Vignola on 928 0711 for more information, advertising rates or if you want to help put the paper together.

Deadline for the next issue, for May, is 26th April. And pick up your copy from Borough Community Centre or Waterloo Action Centre from 7th!

## JOB VACANCY

WORK!

Part-time help wanted in busy off-licence. Fifteen hours per week, including some Saturday work. Must be responsible person.

For more information, contact Brian and Kath at 63 Stamford St, SE1 (928 5239)

## Off-licence

### St Olaves Hospital closure causes continuing distress

Guy's Hospital is not coping with the increasing strain on its out-patient clinics.

According to new figures released by the Health Authority, Ear, Nose and Throat patients have to wait six months or more for routine appointments. Rheumatologists have to put their patients off for 8 weeks, and paediatric appointments involve 5 weeks delay. Pressures are also being experienced in gynaecology appointments and in orthopaedics.

"These Health Authority figures expose the nonsense of the closure of St Olave's. Whilst plans, which we welcome, continue for new developments at St Olave's, our community - particularly the elderly - desperately need the return of out-patient clinics not only because Guy's is overloaded, but also because the transport between Rotherhithe and London Bridge is totally inadequate."

# GARDENING

WITH KEIB THOMAS

## WOMEN INTO GARDENING

Are you interested in a career in horticulture? We are running four 2 day 'taster' courses for women at the GLC Training Centre in Finsbury Park. The course will give you an introduction to gardening skills.

Course Dates: April 1+2, 3+4, 9+10, 11+12.

Creche facilities available by prior arrangement.

If you are interested please ring Celia Robinson 633-1690.

Distribution of men and women employed in the GLC Parks Department at this time:

|                                | MEN | WOMEN |
|--------------------------------|-----|-------|
| Park Managers                  | 22  | 0     |
| Deputy Managers                | 22  | 1     |
| Supervisors                    | 198 | 4     |
| Keepers                        | 183 | 13    |
| Gardeners                      | 220 | 27    |
| Cleaners and toilet attendants | 18  | 119   |

Obviously equal opportunities for women have a long way to go! The course advertised above is part of the GLC strategy to reverse previous practice which clearly discriminated against women.

## Wild VIOLETS

Most people are familiar with the friendly colourful 'faces' of the hybrid pansy and viola. The wild species from which the pansy and viola were created have much smaller flowers and foliage, and so they have a particular charm and grace of their own.

Viola Odorata (the sweet violet of the hedgerow and waste places) is very suitable for growing from seed in large pots or window boxes. Seeds are 50 pence per packet at Suttons Seeds Shop, 33 Catherine Street (opposite Drury Lane Theatre), Covent Garden.

The leaves are heart shaped and mid-green. The Violet has scented flowers in shades of mauve through to purple. They appear from February to May, and sometimes in the autumn. Seeds should be sprinkled on damp compost and lightly covered with compost in a shady spot out of direct sunlight. Violets are hardy and will thrive out of doors for many years once established.

Bedding plants in strips will soon be appearing on market stalls, supermarkets etc. The last week of April is a good time to start buying as you can plant out immediately without much risk of frost damage.

Happy Easter.



## FLATS FOR RETIRED PEOPLE

Vacancies occur from time to time in an attractive sheltered housing scheme in West Norwood for retired people who live in the North Southwark area of the Borough.

St. Saviour's College in Hamilton Road, West Norwood is administered by the Corporation of Wardens of the Parish of St. Saviour and preference is given to residents of the old St. Saviour's parish - an area which centres now on Southwark Cathedral and adjoining districts.

To be eligible, would-be residents should have lived in the area between Blackfriars Road (leading down Kennington Park Road) and Borough High Street leading down Great Dover Street and part of Old Kent Road, down as far as Albany Road, SE1.

A residential qualification of three years is required; people should be of limited means; of good health and be able to look after themselves.

Residents live rent free, pay no rates, and are provided with central heating and hot water at no charge, though they must pay for any extra heating.

The College is a sheltered housing scheme, consisting of 63 flats for both married couples and single persons, built in four two-storey blocks and arranged around a large garden. There is a common room and a fully-equipped laundry, and a Superintendent and other assistant staff are in residence.

If you would like more information about applying for a flat or you know of someone who might be eligible and you would like to put them in touch please contact:-

The Clerk to the Wardens

8 Southwark Street

London SE1 1TL

Telephone: 407 5961



*The Corporation of Wardens  
of the Parish of St. Saviour, Southwark*

(United St. Saviour's Charities)

## WELCOME BACK!

After a few months absence, Andrew Boyle is back at his regular pitch - on the corner of Alaska St and Waterloo Rd, selling newspapers and magazines. Lambeth Council, which is responsible for newspaper stalls, are satisfied that none of the literature sold will be offensive to women, which is a major consideration in granting licenses.

Andrew, who lives nearby in Ipsden Buildings, is looking forward to meeting all his regular customers again. SE1 is assured of a place on his stall, but as it's a very popular local paper (and free!) you'd better get down there quick each month to get one!!



### SE1 EDITORIAL GROUP

Sally Howe; John Howes;  
Margaret Schofield; Dave Scott;  
Peter Simmons; Keib Thomas;  
Gerry Vignola; Paul Wheeler.  
Bob Gibbs

### Lunar Cycles Bicycle Repair Co-operative



13 London Road, London, SE1  
Tel. 01-261-0602  
Tues-Sat 10-6  
Repairs, Spares, Accessories



## THE DARK SIDE OF THE GLOBE

The promoters of the Globe Theatre scheme on East Bankside have recently embarked on a promotion campaign aimed at winning support for the project from local residents.

A well-produced newsheet went through every letter-box in North Southwark, trying to entice people to its point of view by offering 'prizes' for the eventual 'grand opening' of the theatre (which of course is yet to get off the ground. Southwark Council now considers to be void the agreement by the previous Council administration on the site).

Further inducements were a chance to meet the 'stars' of the stage and TV at a public meeting on March 16th, few or none of whom even live in the area much less have any idea about its problems. This show-bizz hype should not be allowed to cloud the issue. This is not a matter of being for or against theatre.

The facts are that now the Council's North Southwark Plan, which was widely supported in the community, allocates sites like East Bankside for housing to meet the needs of the local community which for the most part is at present poorly housed. The site wanted for the Globe Theatre is a perfectly good site for housing. The advocates of the Globe want to create the idea that the Council is obstructing the regeneration of the area. But the North Southwark Plan shows this not to be the case. The scheme's promoters also avoid mentioning that building the theatre also means building 100,000 square feet of offices which would uselessly add to the other 2 million square feet of empty offices in North Southwark.

The central issue is not the Globe Theatre, but to what use the land should be put. The alternatives are clear: Globe Theatre plus offices or homes for local people.

### Cathedral Ward Branch

SOUTHWARK-BERMONDSEY  
CONSTITUENCY

### Labour Party

Cllr. Alan Davis &  
Cllr. Geoff Williams

### ADVICE SESSIONS

If you have a problem they would be glad to see you on:

2nd and 4th Fridays of the month at:  
Blackfriars Settlement  
Nelson Square from  
7.00-8.15 pm.

### UPB supermarket

Flat Iron Sq, Union St.

**Try us**...for food, drink and household goods.

The cheapest shop between Long Lane and Blackfriars Rd in a recent SE1 shopping survey.



# PROGRESS ON THE COURAGES SITE

## First Phase

AFTER TWELVE LONG YEARS OF EFFORT BY THE LOCAL COMMUNITY, WE ARE AT LAST GOING TO SEE A MAJOR SITE IN NORTH SOUTHWARK DEVELOPED TO PROVIDE HOMES AND JOBS FOR LOCAL PEOPLE - NOT OFFICES.

THE COURAGES SITE - WHICH TOTALS SEVEN AND A HALF ACRES - WAS BOUGHT IN 1983 BY THE GLC AS PART OF ITS COMMUNITY AREAS POLICY AND IS BEING JOINTLY DEVELOPED BY THE GLC AND SOUTHWARK COUNCIL.

WORK IS PROGRESSING WELL AND IN THE WORDS OF GEORGE NICHOLSON, GLC LABOUR MEMBER FOR BERMONDSEY, "THIS SHOWS THAT IF YOU WANT SOMETHING TO HAPPEN AND PERSIST AT IT, YOU WILL MAKE IT HAPPEN. THIS PROJECT DESTROYS THE DEVELOPER'S MYTH THAT COUNCIL HOUSING AND FACTORIES CANNOT BE BUILT ON THE SOUTH BANK".

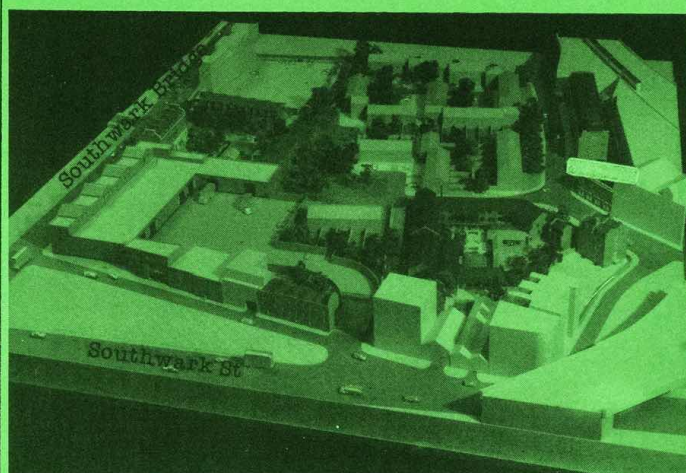
### FAMILY HOUSING FOR RENT: FIRST PHASE

Work on these homes, near the Southwark Bridge Rd. side of the site, will begin in July this year and should be completed by June 1986.

There will be a total of 10 houses, 6 maisonettes and 5 flats, all with gardens. Eventually, further homes will be built in Phase 2, providing 120 family houses covering the whole site.

### INDUSTRY

Work has started on building 6 large industrial units and will be completed in August 1986. Attempts are being made to ensure employment for local people, while the GLC is confident about finding tenants for the factories.



### LISTED BUILDINGS

The Courages site contains a number of listed buildings which will be rehabilitated for housing. These are: The Gatehouse, Southwark Bridge Rd., 15 flats; 21-23 Park St., 6 2-bed flats; 20-26 Park St., 4 3-bed houses; and 55-59 Thrale St., (shown in the photograph, where work is in progress), which will provide 5 3-bed houses. All of these homes will be for rent by Southwark Council and work should be completed by Spring 1986.



### SHELTERED HOUSING

Work begins this month on the sheltered housing scheme. On completion in September 1986, it will provide 37 2-person flats, complete with warden.

### INDUSTRIAL WORKSHOPS: PARK STREET

Work started clearing this site (shown below) in November last year. This has now been completed and work has commenced on the building of 24 industrial workshops. Finish date is scheduled for January 1986. The workshops hope to attract new start-up firms and Coops employing local skills.



## NORTH SOUTHWARK COMMUNITY DEVELOPMENT GROUP

WE ACTIVELY SUPPORT THE COMMUNITY AREAS POLICY OF THE GLC