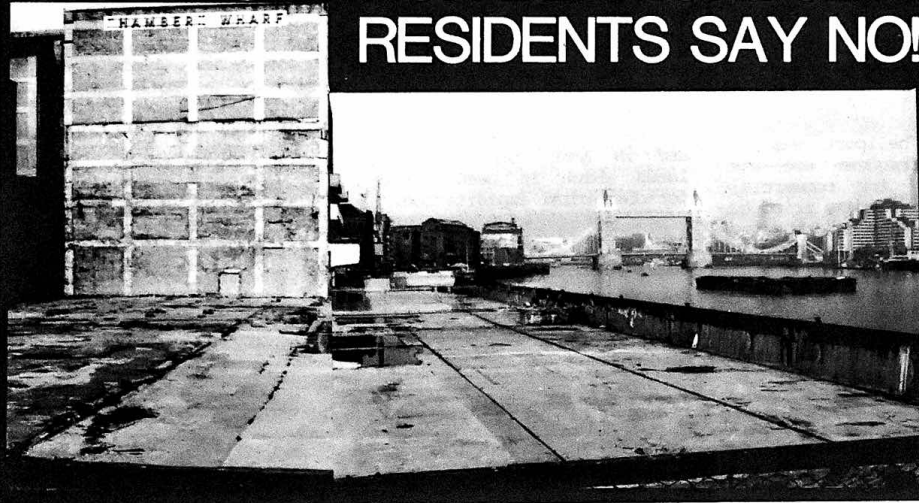


SEI

ISSUE 33 JUNE 1985 FREE COPY

A HELIPORT FOR BERMONDSEY? RESIDENTS SAY NO!



A heliport on Chambers Wharf?

Star Aviation, owned by meat baron Lord Vestey, wants to set up a Heliport at Chambers Wharf in Bermondsey to serve the City of London. The company has submitted two planning applications to the London Docklands Development Corporation for a heliport consisting of 2 barges moored off the wharf. The scheme would also include car parking, passenger, refuelling and office facilities on-shore.

Already, the local "Tenants Associations are up in arms against it and will fight it all the way", said Joe Cook of the Millpond TA and the Cherry Garden Pier Action Group. A number of Tenants Associations, including the Dickens Estate TA, Downtown TA, Mayflour TA and Swan Road TA, whose residents would be affected by the scheme, have let the LDDC know in no uncertain terms that they will strongly oppose the proposal.

Other community organizations in the borough, such as the North Southwark Community Development Group, are also totally against it.

contd p2

CAMPAIGN AGAINST POST OFFICE CLOSURES VICTORY AT THE "BORO"

A long campaign against the closure of two Crown Post Offices in North Southwark has brought a partial victory for the community. The Post Office authorities have recently announced that the 239 Borough High St office will remain open, but that the Bricklayers Arms office in the Old Kent Road will close finally for business on 8th June.

The campaign was joined in the middle of 1984 by various community and tenants organizations, the Union of Communication Workers, Southwark Council, local councillors and the local MP.

The Post Office authorities had planned to axe over 90 Crown Post Offices in London. They had been ordered by the Government to hand over more of their profits to the Treasury. By a curious coincidence the amount demanded by the Chancellor of the Exchequer was what the Post Office

figured to save by its planned closures.

Things didn't go according to Post Office plans. Closures were met by concerted community, union and political opposition. But the credit belongs to all those hundreds of local residents who month after month put pressure on the Post Office by signing petitions, writing letters of protest, joining demonstrations and sit-ins, delegations to the higher authorities, lobbys of MP's and so on. Residents demonstrated conclusively that community action to maintain local facilities works.

At the Bricklayers Arms office, the Controller of Counter Services at London Postal Region has promised to walk the ground with local people to see what difficulties they would face if that office closes.



At the Boro PO, the decision to remain open will be reviewed in 12 months time, according to the postal

authorities. So if you've got Post Office business in the Borough district, use 239 Borough High Street.

The local newspaper!

Especially affected would be the tenants of the large and densely populated Dickens Estate immediately surrounding the wharf. Fountain House is only 50 feet from Chambers Wharf and residents there are shocked at the proposal. The caretaker of Riverside school, also very close to the wharf, told SEI that "everybody had kicked up against the heliport". On past occasions when helicopters had hovered around the wharf or nearby Southwark Studio, the caretaker's home had vibrated.

There are also four schools in the area, two in the immediate vicinity. Noise disturbance would upset the children's education.

They argue that a commercial heliport will cause nuisance to the local population through noise and increased traffic circulation. It will also destroy the amenity value of the river, particularly along this stretch which is set a long way back from Jamaica Road and enjoys a fair bit of peace and quiet. Nor is it relevant to local industry and jobs. The land

in question is in fact designated in the North Southwark Plan as suitable for industry and housing. Next to the wharf are vacant stretches of land which would be ideal sites for housing, up to Cherry Garden Pier where local residents are at present opposing LDDC plans for 8-storey blocks of private flats.

FALLING STAR

Star Aviation began operating its services, in 1974, from a heliport at Stamford Wharf, in front of the Oxo Tower. At the time, it was believed locally that it had been authorized for the personal use of Lord Westey. By the early 1980's the heliport was in much more frequent use and being used for commercial flights. The company tried to expand onto the neighbouring Gabriel's Wharf for storage of its helicopters, but planning permission was refused by Lambeth Council. When Coin St Community Builders (formed by local residents in Waterloo

to develop the Coin St area for the community) bought Stamford Wharf from the GLC, Star Aviation got its marching orders in September 1984. A newly built jetty now stands where the heliport once did and will be part of a public riverwalk when the Coin St project is complete.

THE LAND

Chambers Wharf is owned by the Kuwaiti Investment Corporation which is presently developing two and a half million square feet of offices at Hays Wharf between London Bridge and Tower Bridge. They have reached agreement with Star Aviation over use of the land for the heliport, which is intended to serve business executives in the City, the South Bank and in East London's Docklands which is seen as ripe for commercial exploitation.

PAST VICTORIES

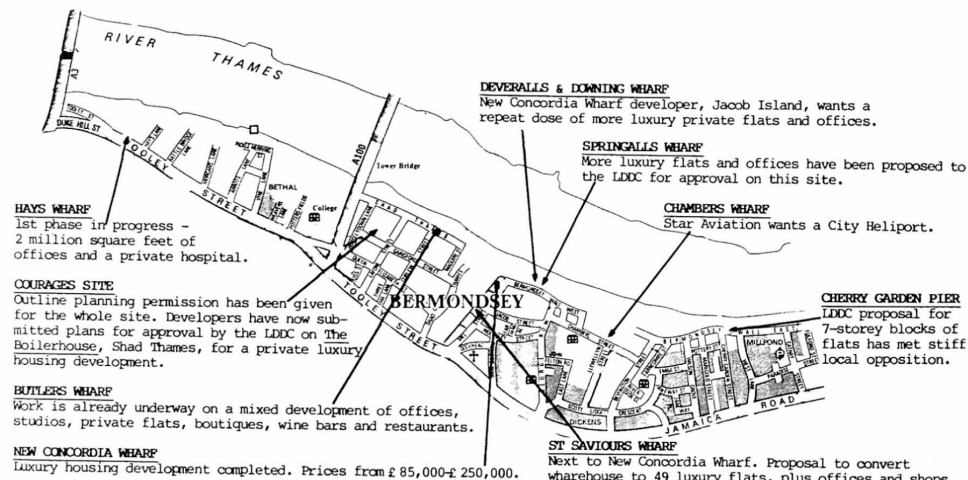
Bermondsey residents have already beaten off two previous attempts to bring air-borne traffic to the area,

the VVOL airport in 1971 at Surrey Docks and at Brussels Wharf in Wapping opposite Chambers Wharf in the early 1970's.

There is no guarantee that once established, the heliport would not rapidly increase its services. This has been the case at the Battersea heliport which last year successfully applied to Wandsworth Council for more flights despite local opposition. Once the foot is in the door it soon starts growing. Trig Lane heliport, opposite Bankside Power Station, is due to close soon. Battersea Heliport, which is presently used by Star Aviation, is a long drive from the centre of London. As Chambers Wharf would be a public commercial heliport open to other flight companies, and the only heliport serving central and east London, helicopter traffic and support facilities would probably expand considerably within a short space of time.

The feeling locally is that the proposal hasn't received planning permission and the ball is now in the LDDC's court.

DEVELOPERS RIVERSIDE CARVE-UP



Like bees round the honeypot, property developers are now swarming around Bermondsey's Thameside. They are assured of a sympathetic ear at the London Docklands Development Corporation, planning overlord of practically the whole of Southwark's riverside. The LDDC - readers will maybe remember - was imposed on London's Docklands in 1981 by the present government. It was set up to bypass local democracy and short circuit the local council's planning

laws. All the Board members of the LDDC are directly appointed by the Secretary of State for the Environment, Patrick Jenkin. The Planning Committee meetings are not open to the public.

Much of the land bought over the years by Southwark Council along the river and in the Surrey Docks for housing developments, passed compulsorily into the hands of the LDDC.

Since the LDDC now owns the

land and has planning power over the riverside, it can effectively block Southwark Council's plans for the area. These plans are contained in the North Southwark Plan. This was prepared with wide consultation in the local community. For the riverside, it proposed attractive low-rent housing, recreational facilities and efforts to bring back industry.

So, instead of local planning for local residents we have the riverside turned into a

gold mine for the property developers.

Developments already underway or in the pipeline - offices, a private hospital, expensive private housing, a heliport, restaurants - are aimed at attracting wealthy residents, jobs that won't be filled by London's unemployed, tourists who unbeknowns to them help to force up prices. All this adds up to little benefit for Bermondsey.

NORTH SOUTHWARK HEALTH ACTION GROUP

The North Southwark Health Action Group has been meeting since last autumn to take up particular problems with the Health Service, to find out why they occur and to campaign for the improvement of existing services and the introduction of new ones.

DISCHARGE FROM HOSPITAL

One problem raised by residents is the difficulties some people face when they are discharged from hospital. A number of people, above all those who live alone and the elderly, have spoken to the Group of the problems they faced. Some have been discharged without their friends or relatives being informed. Others without the Social Services being told.

It can mean that frail people recovering from an illness arrive home with no help available, in one case without electricity and gas being on.

We are trying to gather more examples of where the system breaks down so that we can put forward proposals to improve it. If something like this has happened to you, please come to a meeting or contact HAG at the address below.

GUY'S HOSPITAL

Long waiting times at the Accident & Emergency Department and long waiting lists for some out-patient clinics are causing problems for residents. These are being taken up through the Community Health Council by HAG members who sit on the Council.

CARE IN THE COMMUNITY

The Health Authority is implementing a policy of caring for mentally handicapped people, who at present live in Darenth Park Hospital, in their own community. People who originally came from Nth Southwark will be found accommodation in the area.

Residents have shown concern that the Health Authority will not be able to provide the support necessary to meet the needs of those returning to the area. The Health Action Group is taking this up with the District Health Authority and with Southwark Social Services.

COMMUNITY MIDWIFERY SERVICE

Have you had any problems in trying to have your baby at home? The Community Midwives

operate the 'domino' system which is meant to ensure that you have the same midwife throughout your pregnancy - is this system working?

Last month the Health Action Group and the St Olave's Hospital Campaign decided to hold joint meetings over the next few months. One area of common interest is the increase in out-patients waiting lists since the Out Patients Department closed at St Olave's.


GET INVOLVED IN HEALTH CARE ISSUES IN THE COMMUNITY

The next meeting of the Health Action Group and St Olave's Campaign will be on:

25th June, 6.30pm
at Social Services Office
283 Tooley St, SE1

For further details contact:

Alan Turkie at Rotherhithe Community Planning Centre,
190 Southpark Rd, SE16
Tel: 231 0917



SHOTOKAN KARATE
at the
BOROUGH COMMUNITY CENTRE
56 SOUTHARK BRIDGE RD

	FREDDAYS	SUNDAYS
BEGINNERS	6.30-7.30	8.30-9.30
ADVANCED	7.30-8.30	1.30-2.30

UNEMPLOYED AND OVER 65's £1.00
ADULTS £1.50
TELEPHONE 528 6776

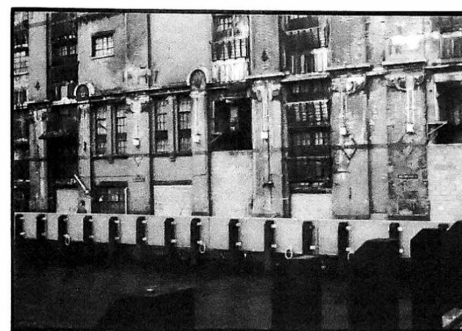
Cathedral Ward Branch SOUTHWARK-BERMONDSEY CONSTITUENCY Labour Party

Cllr Alan Davis &
Cllr Geoff Williams

ADVICE SESSIONS
If you have a problem,
they would be glad to
see you on:

2nd and 4th Fridays
of the month at -
Blackfriars Settlement
44-47 Nelson Square
7.00-8.15pm.

COIN ST RIVER WALKWAY COMES ON-STREAM

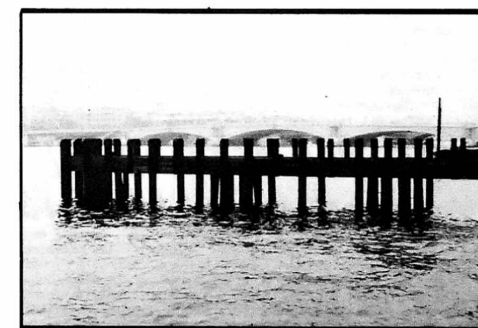


Information Officer

Coin Street Community Builders is looking for someone to encourage support for and understanding of our Coin Street development and the Community Areas Policy. You will need an ability to communicate effectively and sympathetically with a wide range of visitors to our Design Centre, graphic and related skills to produce exhibition/publicity materials, and a knowledge of, and commitment to our Coin Street development and the Community Areas Policy.

Salary: £10,362 p.a. pro rata, inclusive of LW
Application form/job description from Linda at Coin Street Community Builders, 99 Upper Ground, London, SE1.
Tel: 633 6402
Coin Street Community Builders is an Equal Opportunities Employer.
This post is funded by the GLC until 31.3.1986.

Closing date for applications: 21st June, 1985



Riverside walkway & jetty in progress

As part of the developments at the Coin Street site, a large public park is planned, which will extend down to the river.

On the riverside walkway, which will begin at Stamford Wharf and is planned to link up with the walkway at London Weekend Television, work has already begun.

The photo on the left above shows how the wharf at Stamford Wharf has been rebuilt to the height which meets flood prevention requirements.

The photo on the right shows the newly built jetty which stands on the site where the heliport of Star Aviation was once moored. When the GLC bought the site, the company got their marching orders, much to the relief of local residents.

Tenants in Stamford Street are becoming increasingly concerned over the future of their homes. The terrace flats were transferred from the GLC to Lambeth in 1982. Prior to the transfer, they had undergone extensive rehabilitation above all to get rid of widespread dry rot.

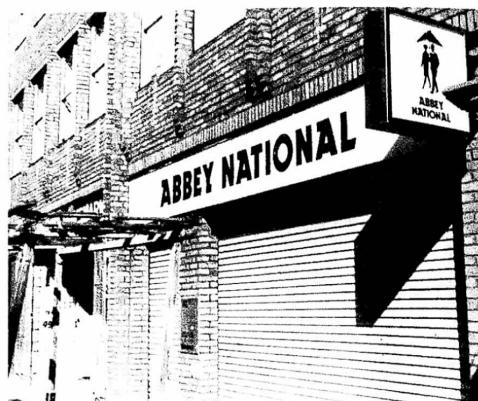
Unfortunately, dry rot has reappeared in part of the terrace, at 95-121 Stamford St. Numbers 95-103 have become derelict due to collapsing internal floors and there are several empty flats in the remaining houses. The complete eradication of the dry rot is likely to be an expensive business and a consultant's report (so far unpublished) has been prepared for the GLC.

The cost of further modernization is likely to prove a considerable problem. Under the terms of the transfer, the GLC have undertaken to carry out all major modernization

and repair work to their ex-properties in Lambeth. But the Government has slashed the amount of money available for the renovation of ex-GLC estates. This has forced Lambeth to establish priorities for repair work on Lambeth's ex-GLC properties.

Where does this leave tenants of Stamford St. Frances Rafferty, Chair of the Tenants Association said: 'Many of the tenants here are worried about what will happen in the future. No-one is prepared to give any guarantees that the necessary work will be completed.'

The Association of Waterloo Groups have taken up the case and are trying to arrange a meeting of GLC and Lambeth councillors with the tenants. Lorna Borland, the Labour candidate in the forthcoming GLC by-election in Vauxhall has also agreed to help the tenants in Stamford St.



An unfriendly habitat
It's going to prove difficult for SE1 residents to get the Abbey Habit in future. Abbey National Building Society have decided to close their Lower Marsh branch on Saturdays. It's bad enough when retail shops like bakers and grocers are replaced by the Building Societies in our High Streets. But it's adding insult to injury when they refuse to provide a service to local people.

The Waterloo Community Development Group wrote to the manager of the Lower Marsh branch pointing out the inconvenience to local account holders of shutting up shop on Saturdays. The nearest alternatives are Elephant and Castle and Walworth Road, both extremely crowded on Saturdays.

Also, Lambeth Council plan to spend 300,000 on environmental improvements to the Lower Marsh area to improve the shopping facilities. Abbey National isn't helping by cutting services to local residents.

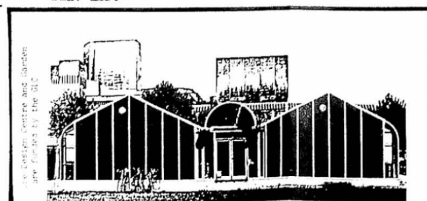
Abbey National says that it surveyed their customers and concluded that 98% wouldn't be put out by their closing on Saturdays. But the survey was carried out on a weekday lunchtime! This is hardly the best time to find local people in Lower Marsh. The overcrowding of the two alternative branches was ignored by Abbey National in its reply to the letter of the Waterloo Community Development Group.

So there it is. Another blow to the future of Lower Marsh as a shopping centre. If you have got to go to Walworth Rd to get money out, then you might as well do your shopping there. The shopping facilities in Lower Marsh will never improve while selfish, narrow-minded business interests prevail.

If you've got an account at Abbey National, why not write to the manager with your opinion of their services. Write to: Mr Boorman, Abbey National Building Society, 351 Walworth Road, SE17 2DP.

So why don't you come into Waterloo Action Centre and get your benefits checked. Perhaps you should be getting more.

Open Monday-Friday 10am-2pm



COIN STREET COMMUNITY BUILDERS

INVITE YOU TO VISIT THE
COIN STREET EXHIBITION
99 Upper Ground

Open 12 - 2.30pm daily

Phone for an appointment at other times
including evenings - groups welcome

VOTE FOR LORNA ON JULY 11th

Lorna Borland has been selected as the Labour candidate for the Vauxhall constituency in the forthcoming by-election for the GLC/ILEA on July 11th.

Despite the impending threat of abolition, the GLC is still important in providing many services and ILEA will continue to provide an education service in our area.

SE1 decided to interview Lorna to find out her views on local issues.

1. How did you become involved in politics?

- I first became involved as a student, and later on as a shop steward.

2. Why are you standing for election?

- I am deeply committed to socialist policies in Lambeth, e.g. equality of opportunity. I also believe in democracy and as I have lived in Lambeth all my adult life, I would like to continue contributing to the development of these policies.

3. Is it worth voting in this by-election when the GLC is going to be abolished anyway?

- Now more than ever it is worth voting for:

Democracy and the right to choose;

Continuation of services to local people, i.e. continued improvement to education.

4. What are the important issues in this by-election?

- Planning, Housing, Employment and Education, and the continued support and funding of local groups.

5. What do you see as the important issues in the SE1 area?

A. Continuing work on ex-GLC estates. Environment improvements to Farnwell Estate going ahead thanks to joint action by Tenants and local Labour Party. But work still needed on Munro House/Watsons Lang House, Clarendon House, Stamford St. and Aquinas St.

B. Planning: Waterloo in particular subject to strong commercial pressures for office speculation. GLC played crucial role in stopping further speculative development on Burtons site and Beckett House site.

C. Coin St: Both of above came together with Coin St. Major victory for local community and support from GLC vital. Ensure that support continues in next year and beyond.

D. Voluntary Groups: GLC helps Waterloo Employment Project, Association of Waterloo Groups, Waterloo Community Development Group, amongst many others.

E. Local Employment: Effect on Waterloo if GLC is abolished secondary loss of local shops and jobs.

- We have a duty and responsibility to keep SE1 an area that working people can afford to live in, houses for cheap and reasonable rent, shopping facilities.

6. You are already a co-opted member of ILEA. What are your main concerns with the ILEA now and in the future?

- My concerns are: to see that our children, young people and adults' educational needs are met, to make sure that we continue to fight against this government's suggested cuts to our services.

7. Politicians often seem dominated by white men. Is it



PHOTO by GILLY HATCHER.

therefore it is only right that this should be reflected in representation to elected offices.

important to have more women and more black people represented in elected office?

- It is my belief that as women and black people, we form an important part of our society,

8. If you were elected, how would you keep in touch with the voters?

- It is my intention to keep in touch after my election by visiting tenants' associations, the various Waterloo groups and other community groups throughout Vauxhall. I will continue the practice of having two surgeries a month, one in each end of Vauxhall.

Growing up in SE1

In recent issues of SE1 we have featured the stories of older residents in SE1 recalling the area as it was many years ago. These have proved very interesting reading and brought forth much correspondence.

Equally it would be interesting to hear from younger

residents what it is like to be living in modern day SE1. We would like to feature such stories in our July edition which will be a specially increased edition of 6,000

copies for door-to-door distribution. Entries should be in two sections, those from young people below the age of 13 and those from young people between 13 and 18. Its entirely up to you what you want to write about and all entries should be approximately 500 words.

There will be a prize of £10 for the best story in each section and the closing date is Monday June 24th 1985. All entries should be sent to SE1 Office at 12 Meynott St. SE1

ARE YOU GETTING ALL YOUR RIGHTS TO BENEFITS?

Do you have enough to live on?

Are you receiving Housing Benefit or Supplementary Benefit? Are you finding it hard to make ends meet. You may not be getting everything you are entitled to.

Waterloo Action Centre and North Lambeth Law Centre recently went round a local estate checking peoples' benefits. Several families found they should have been getting more than they were. One family got £700 back from Lambeth Council.

So why don't you come into Waterloo Action Centre and get your benefits checked. Perhaps you should be getting more.

Open Monday-Friday 10am-2pm

working for a future in Waterloo

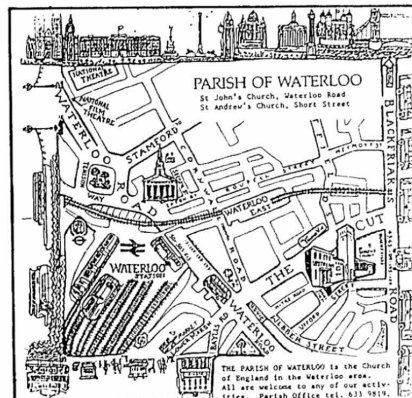
Date of the next
GENERAL MEETING
Wed June 19th at 7pm

99 Upper Ground, SE1

WATERLOO COMMUNITY DEVELOPMENT GROUP

01-633 9291

Everyone welcome!



FAMILY COURSES

Family Summer Workshop

Mon 27th July-Fri 2nd Aug/10-12 and 1-3/ DMS1821F

Pottery, Jewellery, Arts/Crafts and Music

Mon 5th Aug-Fri 9th Aug/DMS1822F

Drama, Dance, Puppetry, Making Musical Instruments

Mon 12th Aug-Fri 16 Aug/DMS1823F

Photography, Silk Screen and Printmaking

For the whole family a chance for parents to learn and enjoy fun activities with their children.

Families may come to each week separately or all three. Materials charge £3 per week. Course fee for 11 EA students £1 for the whole family. Leaflet available from the General Office for further details.

INCLUDES:-
Course Books, Cards, Badges,
Computing Section, Games, Tapes,
Reference, Medical/Nursing,
Civil Rights/Law, Sociology, Education,
Women's Studies/Sexual Politics,
Maths/Statistics, Electronics, Engineering,
Media, Management/Marketing,
Politics, Fiction, General Paperbacks,
Bestsellers, Academic Charts,
Fast Reliable Customer Order Service
LATE NIGHT OPENING.

PHOTO COPYING

THE South Bank BOOKSHOP

ALL YOUR READING LIST REQUIREMENTS

AT PUBLISHED PRICES

NEW ADDRESS

18 LONDON RD.

S.E.1.

PHONE: 928 4701

6 TOWER BRIDGE ROAD - A NEW LEASE OF LIFE



At long last, something is going to be done to the Brighton Buildings Mansion Block on Tower Bridge Road. A scheme to renovate the block will bring new homes and shops back to the area.

The property has recently been acquired by a company set up by Southwark Council. The ground floor will be rehabilitated to provide 8 shop units, although there is a possibility that 5 units will be knocked together to provide a small supermarket.

The top 4 floors have been leased to Arundel Buildings Co-operative which will oversee the rehabilitation of these floors to provide co-operative housing. In total, 26 one-person one bedroom flats will be provided along with 3 four-person three bedroom flats. Allocation of the flats will be 50% Southwark Council and 50% Arundel Co-op.

All in all the project will provide a major boost to the improvement of Tower Bridge Road.

More Jobs Lost As Ashbys Close

North Southwark has suffered more job losses. After the announcement in April of the closure of Metal Box's cheque printing plant in Great Guildford Street, comes the turn of tea and coffee importers and packers Ashbys, who have been in the Borough district since 1890. They have closed down their Union Street plant and moved to Milton Keynes.

The company said it had been obliged to move because of the difficulty of maintaining adequate standards of hygiene in Union Street, and feared a loss of custom.

The family run company was bought up some 15 months ago by Pearce Duff, a medium sized foods company located in Dunstable which is not far from Milton Keynes. Ashbys move then is probably also due to rationalization which soon follows all company take-overs. Experience shows that job losses usually follow as well.

About a dozen workers have been made redundant. Some readers may recall that last year the company sacked 8 of its workers who wanted to join a union, following a unionization drive at the plant. Pearce Duff unlike most other large foods companies is non-union.

OBITUARY



We are sad to announce the death and sad loss of one of our old and well loved local characters, Charlie Lavell, who at the age of 85 years died in St Thomas Hospital in May after having one of his legs amputated.

Charlie had lived on the Peabody, Duchy Street Estate for over 50 years. He had been a docker, working for Beck and Politzer, on Nelsons Wharf and at Bankside. Later he became a printer and worked at the Daily Mirror in Stamford Street.

Right up to his illness, you would always see him chatting to people in the streets, or running errands for the Aero-polis Restaurant in the Cut or helping out at Tommy Farnham's fruit stall. Many a time you would see Charlie giving away an apple or an orange to O.A.P.'s in the area.

Being very independent, he would always refuse help or invitations to Xmas parties at Colombo St or even a Xmas parcel. He always said that there were others less well off than himself.

The photo shows Charlie with his grandson taken about 20 years ago. The family wish to thank all those who sent flowers and condolences.

YOUR LETTERS

Dear SEI

I was interested in your last issue to read about Denney's Shop on the corner of Roupell St and Hatfields. I was born in the street in 1910 and recall 2 other occupants of that shop. The original one many many years ago was Reynolds Boot & Shoe Shop, and later on B & M Davies Dairy Provisions, 2 sisters from Wales back in the 1940's.

I also remember the shops in Roupell St. - Cleanco and Coopers Fruit & Vegetables and the little houses with two rooms up and two down. And there was a shop occupied by Norman Hodgson a big tall man over 6ft in height who owned a white boxer dog. I think he was a tobacconist and confectioner. When he stood in the doorway of the shop, his head nearly hit the crossbar.

When I was at St Johns school I remember the North Pole Ice Company, with its horses and carts, whose drivers used to deliver the blocks of ice to the various hotels. I remember going to a peace party in Brad Street at the Ice Company. That was in 1919 and was for the local children. I had a beaker given as a souvenir on that occasion.

Yours, Leslie Randall
Henry House, Coin Street

Dear SEI

I am writing about the article entitled *The Dark Side of the Globe* which appeared in the last issue of SEI. At the Public Meeting on the future of the Globe Project held at the South Bank Poly on 16th March (attended by 150 people of whom 75% were local residents), it was announced that, since the voiding of the Agreement by Southwark Council, Freshwater (alias Denno Estates who were due to build the offices next to the Globe) have abandoned their development. This has been confirmed since the meeting by Tony Ritchie, Leader of Southwark Council.

This now of course means that the Globe project can go ahead without offices being built and the site next to the Globe Theatre can be used for housing or open space, as Southwark Council think fit.

I'm sure you agree that it would be helpful to your readers if you print something to correct the misinformation given in the article on the Globe.

Yours, Veronica Marris
International Shakespeare
Globe Centre

Dear SEI

Further enlightenment of the Obelisk in St Georges Circus. It is now situated outside the War Museum. The Obelisk was removed and replaced by a four-faced clock. This was sold by Southwark Council for one pound provided the buyer took it away.

The pub on the corner of the Cut was originally The Railway, but is now The Ring. The picture of the boxer is Jimmy Wild also known as the Mighty Atom. The Royal Surrey Opera House was situated between two public houses The Buxetrian & The Flowers of the Forest.

The Boxing Ring was originally the Surrey Chapel. The South London Palace was situated in London Rd near the Elephant & Castle. Most of the stars played here before going to the West End. The working class were the best critics.

Charlie Chaplin played here with Lew Lakes humming birds and Grace Fields came here with her first husband Archie Pitts.

I am enclosing five pounds towards your expenses and will write again next month to give you a little experience of Bankside.

Yours G F Morley
St Saviours College, Norwood

Dear SEI

I read with interest your article *Waterloo in the 1980's* and, as Chair of Lambeth's Control and Licensing Subcommittee, responsible for issuing licenses in the street market, I wish to bring the following to your attention.

Firstly, your article quoted the success of other thriving London street markets that cater for commuter and local needs throughout the normal trading day. Your article rightly pointed out that Lower Marsh has developed into a mainly lunchtime market. We have been concerned for some time at this development, but the traders have consistently stated there is insufficient business to make a full trading day viable, and that they rely on commuter business for the substantial part of their turnover. This has inevitably led to traders selling commodities in demand by the south bank office workers as opposed to the more basic goods desired by the local community.

Your article referred to the large number of clothing stalls in the market. Since I

GARDENING

WITH KEIB THOMAS

The GLC Works for Women SAVE IT



Committee PUBLIC SERVICES Date 3rd JUNE 1985

Southwark Brown Tail MOTH Caterpillars

The problems caused by Brown Tail Moth infestations were first brought to the attention of members in 1980. Since then the situation has progressively worsened and the action taken to control its caterpillars has not been effective.

In January 1984 this committee decided that attempts to eradicate the moth should continue the use of insecticide spraying in favour of other methods. In addition the problem was referred to the A.L.A. to discuss a concerted approach and to Amenities Committee to request their assistance.

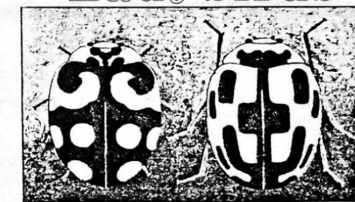
In September last year, Amenities Committee approved the diversion of funds scheduled for normal arboricultural work to programme of winter net cutting.

Current policy therefore, is to adopt a two-pronged attack. Spraying insecticides during the summer when the caterpillars are active and cutting out the winter tents during the "hibernation" stage.

Spraying

Last summer the infestations of the Brown Tail Moth were the worst experienced in Southwark. At their peak, complaints jammed the switchboard and created a volume of work which could not be dealt with using available resources. Only those areas where children were directly at risk were sprayed which amounted to only 29% of the 604 reported infestations. Even at this reduced level, some 950 litres of insecticide were used.

Ladybirds



Not all BUGS are BAD!
Ladybirds eat GREENFLY.

Seen any
like these in SE1?

became Chair of the Subcommittee we have limited the number of licenses for traders selling clothing, and since 1982 we have refused to allow any new casual traders into the market to sell clothing.

There are a number of outside factors that have led to the decline of Lower Marsh Street Market - the fall in the population of Waterloo and the pattern of shopping. We share your concern and are currently examining ways in which the market could be improved for the benefit of the local resident. The Council is current-

ly collating local residents' views on the ways in which the market can be improved and officers are consulting the street traders.

The Council will be responding positively when the result of this consultation exercise is to hand. Meanwhile I would be grateful if you will send any of your readers' views to me to be considered as part of this consultation exercise.

Yours, Cllr Noel Hannon
Chair, Lambeth's Control and Licensing Sub-Committee

The NSCDG invite you to visit the COURAGES EXHIBITION

at 56 Southwark Bridge Road, SE1. From 24th June for one month. Viewing Times: 11.30am-5.00pm

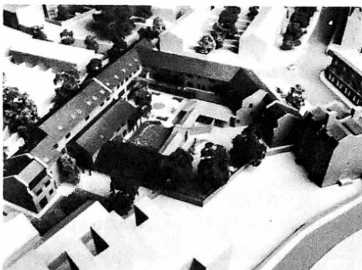
The proposals for the former Courages Bottling Plant on Southwark Bridge Road for family and sheltered housing and industrial units represents a major victory for the local community who have fought long and hard over the years for such developments.

An exhibition, with a model of the proposed developments, photographs, drawings and words, fully illustrates the proposals now being jointly implemented by the GLC and Southwark Council.

All are welcome to view the exhibition.

For further information telephone 928 0711

NORTH SOUTHWARK COMMUNITY DEVELOPMENT GROUP



SE1 DIARY

Local author, Peter Tatchell, better known as the candidate for Bermondsey in the notorious by-election of 1983, has written his second book called *Democratic Defence*. It has been widely praised by many reviewers for its contribution to the debate on nuclear disarmament.

Peter, who lives on the Rockingham Estate in SE1 proposes a defence system based around defensive anti-weapon systems and a community-based citizen army staffed by part-time volunteers, democratization of the armed forces, the mass non-violent resistance to any enemy occupation and replacement of NATO by a non-nuclear European wide self-defence organization.

At £3.95, the book is available from the South Bank Bookshop in London Road.

At the end of May, scores of young and homeless people from Hastings protested outside the DHSS offices at the Elephant and Castle against new government regulations on DHSS payments for Bed and Breakfast Accommodation. Young people, forced to live in bed and breakfasts because of the housing shortage, will now be obliged to move on every six weeks, resulting in homelessness, loss of voting rights and difficulties in getting health care.

The AGM of the Community Education Project at Morley College will be held on Monday July 8th at 7pm at the Community Education Building in King Edward Walk, SE1. The CEP was set up to ensure that Morley College met the needs

of local people in North Southwark, Waterloo and Nth Lambeth. Membership is open to individuals and organizations in the area. Further information from Keib Thomas or Anne Dolan on 928 8501.

Coming soon: *Landmarks*, a play on the subject of land and how ordinary people are being pushed out of Central London areas, will be previewed at County Hall on Saturday June 15th at 5pm. It is written by Louanne Tranchell. Further information from her at 603 6493.

The Association of Waterloo Groups will meet on Tuesday June 25th at 7pm, at the Waterloo Action Centre, 14 Baylis Road, SE1. All are welcome.

After a strong case put forward by local people, the Planning Inspector rejected plans for further office development on Waterloo Rd by Finance for Industry. The decision was overturned by the Conservative Minister Patrick Jenkin.

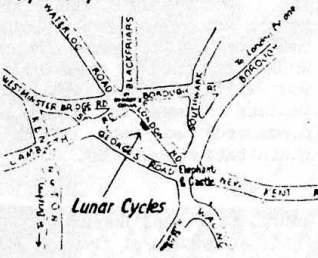
Reveille Building: Rumours abound that the derelict Reveille Building in Stamford St could soon be put back in use by Maxwell's Mirror Group Newspapers. It is being suggested as the site of the Mirror's new printing works. Though bringing much needed work to the area, it could also prove very noisy to Stamford St & Coin St residents. Local councillors Terry Rich and Kath Connelly and the MP Stuart Holland are monitoring the situation to ensure protection of the interests of local people.

SE1 EDITORIAL GROUP

Bob Gibbs, Sally Howe,
John Howes, Margaret Schofield,
Dave Scott, Peter Simmons,
Keib Thomas, Gerry Vignola,
Paul Wheeler

Lunar Cycles Bicycle Repair Co-operative

13 London Road, London, SE1
Tel. 01-261-0602
Tues-Sat 10-6
Repairs. Spares. Accessories



BOROUGH - BLACKFRIARS GROUP OF TENANTS

The Borough-Blackfriars group of tenants is made up of representatives of the following Tenants Associations in Borough and Blackfriars:

Nelson Square Gardens TA
Styles House TA
Borough Road and Lancaster
Incorporated TA
Marshalsea Road TA
Quentin House TA
Webber Row TA

The group meets about every 6 weeks and discusses council Housing policy and how it affects tenants, as well as having time to consider important local issues such as the Post Office closures, abolition of the GLC, etc.

the Bermondsey District Committee and discusses relevant items on the District Committee agenda. These meetings have helped tenants representatives on the District Committee to understand it better, to be more critical and generally better prepared for the District Committee meetings.

We recommend that you contact the TA's in your area and get together. The better organized we are, the more worked out our arguments, the wider the representation, then the more likely we are to have an influence on the Council.

For further information, ring
The group meets in advance of Linda Kerley on 928 6476

☆ SUMMER FAIRS ☆

ROCKINGHAM ESTATE PLAY ASSOCIATION

Stalls

Music

Theatre Groups

☆ DICKENS FESTIVAL ☆

SATURDAY 29TH JUNE, 1.00PM
DICKENS SQUARE PARK
Harper Road, SE1

ENTRANCE FREE

☞ FREE ENTRANCE

BOERMUND SCHOOL

Refreshments

Bottle Stall

Cake Stall

☆ GRAND SUMMER FAIR ☆

SATURDAY 29TH JUNE, 2.00PM
BEORMUND SCHOOL
Crosby Row, Long Lane, SE1

ENTRANCE FREE

Plant Stall

Raffles

Bingo

do come and join the fun

WATERLOO AMENITIES GROUP
is organizing a

Boat Trip to Richmond

on Monday 5th August

Tickets cost £2 adults,
£1 children, under 5's free
from Waterloo Action Centre
14 Baylis Road, SE1

The Amenities Group is also
going to be holding an AGM
September. We would like
your ideas and help in
organizing next year's
programme



LABOUR
working for you locally...

**TERRY RICH &
KATHY CONNELLY**
your LABOUR councillors
on Lambeth council

Surgery
EVERY THURSDAY EVENING 6.45-7.30
at China Walk Tenants Hall,
Lambeth Walk, SE1

MORLEY SUMMER CLASSES

Part Time Adult Education Day and Evening Classes

Adult Education

61 Westminster Bridge Road, SE1 7HT
01-928 8501

1985

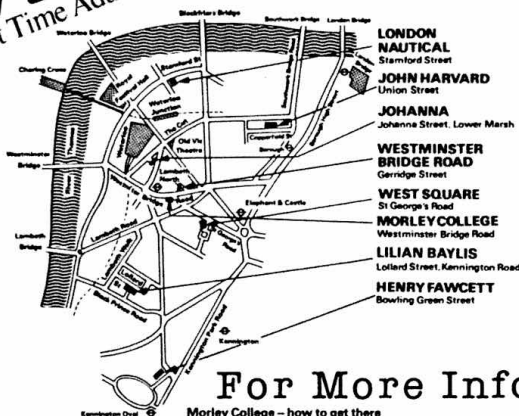
New Summer Day and Evening Courses

Fourth Term:
24th June to 26th July
Day and Evening Courses

24th June - 26th July

For More Information Tel. 928-8501

Morley College



Pick up a copy of the
Morley Prospectus!

IT'S OUR
Shop window

ENQUIRIES: Morley College,

Call in person or Tel. 928 8501

SPECIAL OFFER BEAT THE SEPTEMBER QUEUES

Local people living in SE1 and SE11
can enrol for
September classes on:-

June 17-21-25-26 July 2-3
11-7pm

Crèche, Playgroup and facilities
for disabled people available



FAMILY CLASSES.

MORE FUN AT MORLEY!

Dear Mums, Dads, Children, Grannies, Grandpas, everybody,

It's fun to work altogether on music-making, puppetry, arts and crafts, enamelling and jewellery, pottery, photography, silk screen printing, and dance and drama.

This year we are having 3 separate weeks of activities: from Monday July 29th-Friday August 16th. You may come to each week separately or to all three, but whatever you decide please come for the whole week.

Some activities will take place all day, others in the morning or afternoon. Please choose two activities, one for the morning and one for the afternoon. Each Friday afternoon there will be a party with games, music and fun involving most of the activities.

If you have any spare cotton sheets, fabrics, wool scraps, beads, yoghurts pots, tin cans, junk materials, please bring them along.

Fees are £1 for the whole family if you live in the I.L.E.A. area. There will be a materials charge of £3 per week per family.

The College does not wish any family to be prevented from joining the Workshop for financial reasons. If you are unable to meet the cost in full, please come along as we may be able to help you.

and have a fun week.

I hope you will come

Yours sincerely,
Jenny Hollingdale
Head of Art Workshops

ALL WELCOME JUNE 1985

RUSSIAN STUDY DAY

SATURDAY 22 JUNE

RUSSIAN STUDY DAY

РУССКИЙ ДЕНЬ

RUSSIAN STUDY DAY

РУССКИЙ ДЕНЬ

Morley College is having a RUSSIAN STUDY DAY on Saturday 22nd June, 10.30-9pm, to celebrate fifty years of Russian teaching. There will be talks on the Russian people as seen in the works of contemporary Soviet writers, a short introductory language workshop, a Russian buffet lunch followed by a song recital, an art lecture and a film (The Youth of Maxim).

Councillor Bill Bowring will then give an illustrated talk on the twinning between Lambeth and Moskvoretsky in Moscow.

Culinary enthusiasts may wish to join in a demonstration and preparation of food for the party that culminates the day's activities: Zukuski, salads, Kisel, etc. The party will be from 7-9.

Creche/child care places available. All are welcome.
Enquiries welcome on 01 928 8501 ext 42 or 46.