

SE1

ISSUE 33 SUMMER 1985 FREE COPY

HOUSING & COMMUNITY - KNOWING THE SCORE

Hundreds of new homes are being built in Waterloo - on the site of Campbell Buildings, in Morley Street, on Coin Street, and soon on the Courage site in North Southwark. In addition there has been estate improvements such as at Tanswell, and more is to come.

All of this has been accomplished through Lambeth and Southwark Councils and the GLC in the face of vicious opposition from the present Tory Government. More important, it is a direct result of campaigning by local groups and the participation of hundreds of people, acting with organizations like the Association of Waterloo Groups, the North Southwark Community Development Group, and local tenants and housing associations.

Many households recently received a leaflet which seeks to divide and weaken us by claiming that the local community has been sold out by those who have worked the hardest to create new housing in Waterloo, including the groups mentioned above and the Bishops Ward Labour Party. The leaflet also claims that the National Front - which has never created anything but hatred - will 'protect local people'.

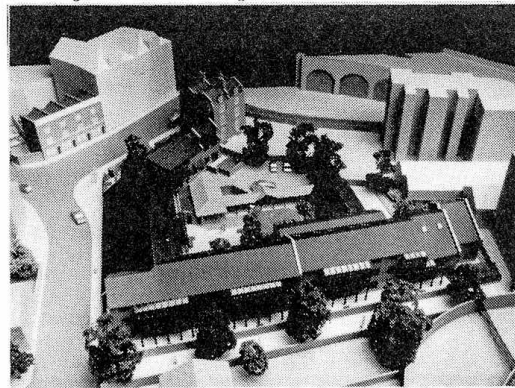
New family and sheltered housing on the Courage site



Local people in Waterloo, as anyone knows who lives here and doesn't just talk about it, means white people and black people, old Londoners and new. Have a look at our schools and the youngsters in the streets; they are the community of tomorrow, and the new housing for them if their families are badly housed.

New housing is essential for rebuilding our community which has been gutted and built over with offices as a result of the greed of property developers and a heartless government that supports them. Many families are in desperate housing need, and it is to those in need that the housing must go, whether they are from Waterloo or elsewhere in Lambeth and Southwark, because the money for building the new housing has come from people throughout both boroughs. Because of Tory cuts, this is virtually the whole of new housing in Lambeth.

Local people - all local people - will be eligible for this new housing according to their need, and arrangements are now being made to ensure that all in housing need, whether they are council tenants or not, are properly registered on housing lists.



SE1 - SPECIAL SUMMER ISSUE

Welcome to the special summer edition of SE1. We've increased our circulation for this issue to 6,000 copies to ensure a blanket coverage of Waterloo and North Southwark. Inside you'll find our usual news stories and a host of summer events planned by local groups for children and adults alike.

SE1 is produced by local people and for over ten years has provided news and information on the issues & events which concern everyone in the area. It's your newspaper, so let us know of events which

affect you, your friends and neighbours, be they births, marriages and (sadly) deaths, outings for OAP's, activities of local community and tenants organizations, the achievements of local sports teams, etc. It's all news.

Sadly, our funds don't allow us to print 6,000 copies every month (although we hope to do so again at Christmas). SE1 is available every month from the Waterloo Action Centre in Baylis Road and at Borough Community Centre in

Southwark Bridge Road. It's also available in many local shops, surgeries, pubs, community centres, tenants halls throughout SE1. Let us know if you want copies regularly.

If you would like to become involved in writing, taking photos, producing or even distributing SE1, then contact Gerry on 928 0711, Keib on 928 8501 or Paul on 928 8806.

Have a good summer. We'll be back in September.

CUTS NEVER HEAL

346 JOBS TO GO AT GUY'S

Members of the Lewisham & Nth Southwark District Health Authority have given the go ahead for management to axe 346 jobs at Guy's Hospital, a tenth of the workforce. With the present government's squeeze on public spending, health officials are looking for further cash savings by sacking workers.

Patients were the first to suffer with these cuts. St Olave's out-patients was closed and so far this year 180 beds have been cut. The Health Authority's future strategy involves further hospital closures and the transfer of priority care out into the community on a huge scale. To get the necessary funds to carry out these plans, District Health Authority management has to convince the Regional Health Authority that it can bring its budget under control. This is the reason for the present proposed sackings.

So far, all these desperate cost cutting measures have resulted only in greater pressures on health services. There is an ever increasing volume of work at Guy's, rapid discharge rates, higher rates of readmission, an increase in cancelled admissions and greater waiting times in out-patients, an increasing strain on staff, and a bigger burden on GP's and those in the primary health care services in the community.

The present redundancies affect doctors, nurses and ancillary workers. But we can bet that the lower grades will suffer first. Consultants, for instance, are protected by a contract and cannot lose their jobs. Further, in order to save money the Authority will want to lose as little as possible in redundancy payments and so the ancillary workers would be the first to go.

PENSIONERS PELICAN RACE



A Pelican Race was organized by members of the North Southwark Pensioners Action Group in early June. It took place in the busy Borough High St on the pelican crossing near the top of Union St.

The purpose of the event was to demonstrate the ridiculously short time allowed for people, particularly pensioners and the disabled, to cross on pelican crossings. The race took place at lunchtime when there were quite a few people about. Some of them joined in and had as much difficulty as the pensioners in trying to beat the green light.

NORSPAG hopes that pressure can be brought to bear on the local Council to allow the green light to stay open longer so that people can have a reasonable amount of time to cross.

BERMONDSEY VILLAGE HALL

Sideways Stalls Inflatables

☆ GRAND OPENING ☆

SATURDAY 20TH JULY, 1.00-5.00PM
LEATHERMARKET GARDENS, SE1

- 1-2.30 Sports - Netball, Tennis, Tug of War, Children's Sports
- 2-3.00 Bingo in the Hall
- 3.30pm Official Opening and pompous speeches
- 7.30pm Fancy dress street party in Bermondsey Street with live bands and Disco.

Children's Fancy Dress Food Face Painting
Breakdancing Puppets Live Theatre

Work

wanted

Clerical work wanted for the Summer

Full-time, part-time, or evening

Contact:
Miss Mitchell
Tel: 928 8806
or write
12 Meymott St
SE1

LOCAL POSTMAN RETIRES

After slogging round Waterloo and North Southwark for the past 18 years, our local Postman, Ben Benton, retired on July 8th. Slogging is perhaps not the right word, because Ben also had the difficulty of climbing loads of stairs, such as on Peabody Estates. We will all miss this very friendly man who always had the time to say Good Morning or chat with local residents.

Ben started very early to deliver our post. Now he intends to put his sore feet up, tend his garden and enjoy a well deserved rest. When asked about his recollections of his 18 years service, Ben recalled the Peabody Estate in Stamford St before its modernization with 20 blocks of 24 flats each and the demolition of 4 of the blocks.

Ben had this to say about the locals: "But most of all the



credit for my staying so long, delivering in the area must go to the people, because they made my job so enjoyable by their kindness and concern. I will miss them all."

On behalf of the local community, Colombo Street Sports and Community Centre presented Ben with two bottles of spirits to show their gratitude.

EDWARD EDWARDS HOUSE

Life long North Southwark resident and a crane driver in the docks until his retirement is Author Sexton. At 84 years of age he has only recently retired as the voluntary Vice-Chairman of the Trustees of the Christchurch United Charities. The Charity is responsible for running 'Edward Edwards House' in Nicholson Street, which may be unknown to many local residents.

The story of the House below is reprinted by courtesy of Conoco who spoke to Author, a mine of information on local history, for their house newspaper.

Edward Edwards was an eel-monger and owned land in Southwark. In 1717, in his 'Deed of Settlement', he set up a charity to provide housing for poor and elderly women of his own parish of Christ Church, which was around Blackfriars Bridge. The income from the land was used to build almshouses for 38 women.

Priority was given to providing for the special needs of its residents. As well as communal facilities - common rooms and an attractive garden - each resident has a self-contained flatlet. Ideal single person accommodation. The original needs of Edward Edwards are still met. The 38 residents live rent and rate free and receive a five pound a month supplement to their own incomes.

The House is open to women who live in the Borough of Southwark over 60 years of age. There is no strict means test, but priority is given to women on limited incomes. In addition, there are over 300 women in the area who receive grants from the charity.



Colombo Street Sports and Community Centre

COLOMBO STREET
LONDON, SE1 8DP

TELEPHONE 261 1658

MONDAY:	KEEP FIT	12NOON - 1.30PM	£1.20
TUESDAY:	KARATE	7.30PM - 9.30PM	£1.25
WEDNESDAY:	KEEP FIT & EXERCISE	7.00PM - 8.30PM	£1.20
THURSDAY:	YOGA	12.15PM - 1.45PM	£1.20
	KARATE	7.30PM - 9.30PM	£1.20
FRIDAY:	WOMENS MORNING OF SPORT	10.00AM - 12NOON	.50P
		* Free creche	
SUNDAY:	HAPKIDO	11.00AM - 1.30PM	£1.25

Non members admission - 30p; concessions for UB40 holders, NUS members, senior citizens, etc. Please ask for details.

Cathedral Ward Branch SOUTHWARK-BERMONDSEY CONSTITUENCY

Labour Party

Cllr Alan Davis &
Cllr Geoff Williams

ADVICE SESSIONS
If you have a problem,
they would be glad to
see you on:

2nd and 4th Fridays
of the month at -
Blackfriars Settlement
44-47 Nelson Square
7.00-8.15pm.

MINT STREET ADVENTURE PLAYGROUND

We are running an exciting and varied
playscheme for 5-15 year olds during
the Summer Holidays. This includes
activities where parents are welcome
to join in.

Children under 5 years old are also
very welcome on the playground if
they are accompanied by an adult.

SUMMER PLAYScheme '85

For details of the
Summer Playscheme please contact:

Mint St Adventure Playground
Lant St, SE1, Tel:403 3747

WHY IS OUR SCHOOL BEING CLOSED?

At last summer has come! Archbishops Park is in full bloom and the children in their classes at Holy Trinity can see the overhanging branches of the trees.

For just four more weeks the very last batch of Inner-City children are going to sit in these classrooms. Once the school closes, it will never be used again as a school, as it doesn't come up to modern standards of playground space, etc.

The cost of upkeep will still have to be met as there are plans to use it as a day-centre. It seems to me then that the cost of keeping the school going would be paltry

compared to depriving generations of city children of this environment. Also the upset caused to children being uprooted makes me sad.

I wrote to Margaret Thatcher and asked her to come and see the school. I received a routine reply from the DES. I wrote to her again and had a letter from her secretary. Shortly after this she penned three letters to Neil Kinnock in as many hours.

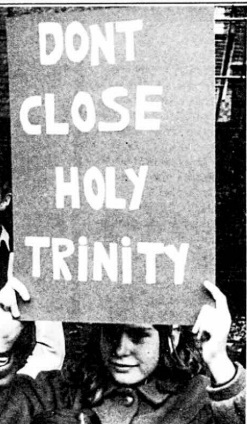
In the meantime Mrs Thatcher is worried about soccer violence - young unemployed bored youths with nothing better to do and no inner resources or strengths to fall back on who are roaming

the streets and trouble finds them. This could have been avoided by better schooling and the primary stage is crucial. Mrs Thatcher could have saved this school and could still do so.

As for the numbers issue, new children have come into the school even this year. Also new housing on Coin Street will mean families with children and the primary schools in the area are more or less full.

So, can someone tell me why are they closing Holy Trinity - why?

A Holy Trinity parent



☆ THE 2ND BORO' FESTIVAL IS HERE ☆
☆ MINT ST OPEN SPACE ☆
CORNER OF MARSHALSEA & SOUTHWARK BRIDGE RD
☆ SAT 27 JULY 2PM TILL MIDNIGHT ☆
DISPLAYS, SIDE-SHOWS, STALLS, MUSIC, DANCE, THEATRE,
☆ BARN DANCE & BEER TENT 7-12 ☆

EXHIBITION

Indian Dance Arts&Crafts

OPEN : 10am-6pm

23 JULY 1985

AT MORLEY GALLERY

FOR SIX WEEKS ONLY!

HOMES AND JOBS FOR SOUTHWARK

**Come and see an exhibition
of the GLC and Southwark Council's
plans for the Courage site.**

**23 JULY-14 AUGUST 1985
AT 55 THRALE STREET, SE1**

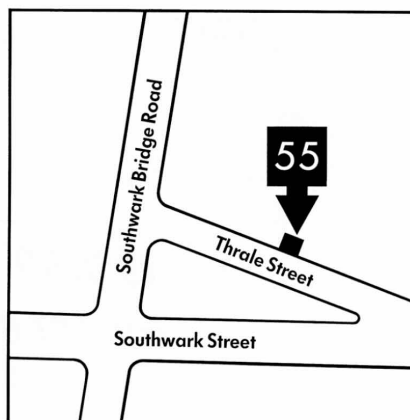
(Between Southwark Bridge Road and Southwark Street)

OPEN

**10 am-4 pm
Mondays, Tuesdays,
Wednesdays & Fridays**

10 am-7 pm Thursdays

10 am-1 pm Saturdays



ACCESS FOR THOSE WITH DISABILITIES

Restricted on-street parking.
Two step access to house. Portaramp available.
Minimum door width 30 inches. Exhibition on one level.
Inaccessible toilet facilities for those in wheelchairs.

WATERLOO AMENITIES GROUP

Boat Trip to Richmond

MONDAY, 5TH AUGUST.

DEPARTING WESTMINSTER

PIER AT 10 a.m.

TICKETS:

£2 - Adults

£1 - Children

Under 2's FREE

ALL WELCOME

(Children to be accompanied)

Tickets from Waterloo Action
Centre, 14, Baylis Road.

The Amenities Group is a group of local people who get together to organise all kinds of entertainments and trips out for children, old people and others living in SE1. With financial help from Lambeth Council. We would like more people to join the Group and will be holding an AGM on Friday, 20th September with an Accapella (singing) group.

We want your ideas for next year's programme, and if you have a bit of spare time - help with organising events. Please contact Jeanette, Dolly or Mary at Waterloo Action Centre. 261-1404 if you are interested.

On an outing to Le-eds Castle (Kent) organised by Waterloo Amenities



There is one thing to shout about, All us kids have been left out, No longer to be Little Jack Horner, Cos now we've started the Kids' Corner.

Competitions, quizzes - Please join in And lovely prizes to win And you can help too - The Kids' Corner is for you.

To get this going we need your views - Moans, groans and good times too Send us your news, photos - anything's fine See it published here it's Kids' Corner time.

KIDS' CORNER

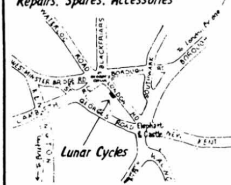
Yes, this is the Kids' Corner. SE1 has at last realised that we are also part of where we live and should be urged to make our own news. So this is the beginning of our own space. Write to us about anything you like - tell us about your schools, your families, your youth clubs. Send us pictures. Tell us who your favourite pop stars are.

If you want to be included, write to: Kids Corner, SE1, 17 Meymott Street, SE1, or ring me, Chris Smith, on SE1 Kids Line 01-928 4359.

**Lunar Cycles
Bicycle Repair
Co-operative**



13 London Road, London, SE1
Tel: 01-261-0602
Tues-Sat 10-6
Repairs. Spares. Accessories



RATES DOWN

Residents of Hatch Row Housing Co-operative in Hatfields in Waterloo have cause for summer cheer. Thanks to the hard work of 2 members, Barbara Gilbert and Bill Thorly, and the North Lambeth Law Centre, they have won a reduction in their rateable values.

High rateable values on new homes have long been a major problem in Waterloo in the campaign to secure decent housing at rents and rates that working class people can afford. Residents of Edward Henry Housing Co-op for instance found their rates as high for a 1 bedroom flat as for a 3 bedroom flat in other parts of Lambeth. They were able to get a 20% reduction in 1983.

Hatch Row decided to follow this example although the case was rejected at the Valuation Court. They appealed against the decision at the Land Tribunal and were successful.

These successes will not only benefit residents of Hatch Row and Edward Henry. As more new rented housing is built in Aquinas Street and Coin Street in the near future, these successful appeals should lead to lower rateable values there as well.

A sad footnote to the story is that the North Lambeth Law Centre which proved of valuable assistance in these two cases, has had its funding stopped by the Dept of the Environment. It is now unable to take on new cases and is carrying on with emergency funding from Lambeth Council.

Super Shopping Every Thursday

Coach to Sainsbury's Nine Elms
Departs Colombo Centre, 1.00pm
Arrives back at 3.15pm

Cost £1 return,
50p OAP, UB40, etc.

Free crèche at Colombo



HAVE YOU HEARD ABOUT US?

Counselling can help if you feel confused, anxious, depressed or unhappy. For example if you feel lonely, have difficulties with your family or relationships, at work or you just need to talk about your feelings with someone 'outside' in confidence.

Counselling can help you make choices, changes, and reduce anxiety and confusion. ANYONE can use the counselling service who lives, works or studies in SE1 or SE11. It offers no magical solution, but talking to another person in complete confidence for one hour a week is of help to lots of people.



The new worker for the
Counselling Service,
Sue Johnson.

We offer a free service at the Barley Mow Clinic on Tanswell Estate, Frazier Street

Tuesday evenings 7 to 9 pm
Thursday daytime 10am to 3pm

You can phone on 928 5921 or call in at Barley Mow between these times, or on other weekdays you can phone Sue on 693 0852 for information or to make an appointment.

COOPER'S NATURAL FOODS

17 LOWER MARSH, SE1

PHONE 261 9314

8.30AM TO 5.30PM MONDAY TO FRIDAY

LUNCHTIME TAKE-AWAY

SUPPLEMENTS

BULK GOODS HERBS WHOLEFOODS

Homemade pizzas, quiche pasties and cakes
Fresh bread and free-range eggs
Organic Fruit and Veg, Paris Mushrooms
Organic Mushrooms from France

De-luxe museli £1.18per kilo
Mexican honey 78p per pound
Barleycup 99p large
Olive Oil (virgin) £2.90 per litre



6 Can you picture this land with. . . . housing?



This year has seen real progress, after years of community pressure, towards developing some of the sites in Waterloo for housing: Coin Street, Campbell Buildings, Gray Street, Morley Street, Aquinas Street, The Cut site. But one huge site still remains, right in the heart of Waterloo - AND WE THINK IT IS TIME WE STARTED TO DO SOMETHING ABOUT IT.

This is the land (pictured above) between Munro House (Murphy Street) and Westminster Bridge Road. It's owned by Brooke Bond Oxo, the food company. But they have just sat on this land and done nothing with it.

We believe that we in Waterloo should start to work out what we would like to see the land used for - in the long run, and also perhaps on a temporary basis in the short run.

(The owners have permission for a huge office development on the site, and a few shops on the Lower Marsh frontage, with private flats above.)

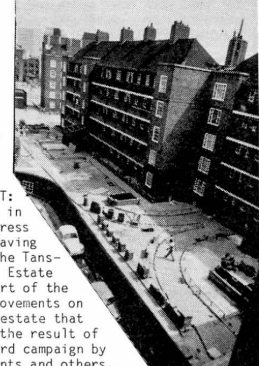
The tenants at Munro and Matheson Lang Houses certainly want to see some good use made of this site: they have to look over on to it every day.

WE'D LIKE TO HEAR FROM ANYONE IN WATERLOO WITH IDEAS ON HOW BEST TO USE IT. Then we can organise a meeting to discuss them all, and draw up a plan.

BELOW: The huge concrete spaces of the 'Bullring'. Ideas are needed to make it less bleak. Some have been put forward, but let us know YOUR thoughts about this or anywhere else in Waterloo.



RIGHT: Work in progress on paving at the Tanswell Estate - part of the improvements on the estate that are the result of a hard campaign by tenants and others.



RIGHT: MORE HOUSING X 2. Just visible top left, the Campbell Buildings site where work is just starting to build homes and a family centre. In the foreground, the new housing in Morley Street, being built for the Peasman Street Co-operative. The money for this came from the GLC.

IF YOU WANT MORE INFORMATION ABOUT THE WORK OF THE WATERLOO COMMUNITY DEVELOPMENT GROUP, CONTACT 99 UPPER GROUND, SE1, Tel: 633 9291

WATERLOO COMMUNITY DEVELOPMENT GROUP

IT'S WORTH FIGHTING: 13 YEARS PROVE IT

When the Waterloo Community Development Group was formed 13 years ago, very few people in Waterloo even knew the name of a local councillor.

The idea that ordinary people could make plans for the future of their area, and fight successfully to get them built; the idea that ordinary people could take on the property speculators with their office developments, and hope to win: these seemed ridiculous. But that is what has happened.

Office plans for Coin Street, the Burton's site in Waterloo Road, and the site by York House opposite St/ Thomas' hospital have all been defeated because local people organised to stop them. The list of new housing in the area is growing too.

growing stronger

All of this happened because people were prepared to believe in themselves, were willing to learn and grow stronger by doing things about making Waterloo a better place to live.

It's not only big battles that have been fought over the years. In the last year, for instance, we have been pressing more residents' car parking spaces, talking about how to improve the 'Bullring' (inside Waterloo roundabout) with greenery and water, trying to find the best ways of protecting shopping in Waterloo, and so on.

So if YOU want to see a better Waterloo, come along and get involved.

COME ON DOWN!

Regular monthly meetings are open to anyone resident in the area marked on the map (left). Meetings coming up are:

- Tuesday July 16th
- Monday September 9th
- Monday October 14th

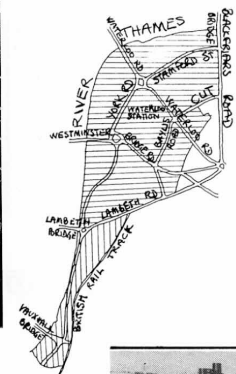
For details ring: 633 9291

IF THERE'S SOMETHING YOU DON'T UNDERSTAND- OR DON'T LIKE.

For every development, from an office block to the alteration of a house, permission has to be applied for. Lambeth Council sends a copy of every application in the Waterloo area to us, together with any drawings or plans.

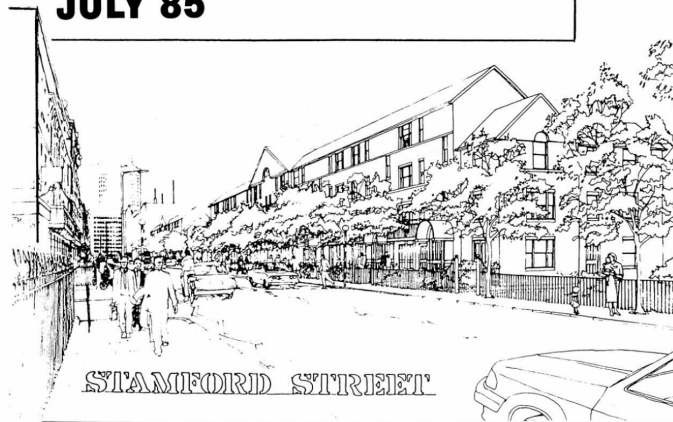
So if you see something happening you don't like, or if you get a notice from the council you don't understand, contact us: we may be able to give you more information.

Phone: 633 9291



What's happening on COIN STREET S.E.1

JULY 85



DEMOLITION FOR RIVERWALK & The PARK

Demolition began August 1984, the day after the purchase of the sites. The Eldorado Cold Store and Nelson's and Gabriel's Wharves will provide the space for the Park and the completion of the Riverwalk. The Boots building on Stamford Street has also been demolished to provide for housing and a Community Centre. Temporarily, this site is now a carpark to replace the carpark behind the Bar where building is due to begin in October. The riverwalk and first phase of the park are due to be completed April 86.

STAMFORD WHARF - JETTY & STEPS

Stamford Wharf is being surveyed in detail, prior to work starting on the refurbishment and the arcading on the riverside. The bottom floors are for light industry and the upper floors are residential, to be adapted into flats. The jetties have been re-clad in timbers and the wall built along the walk.

Your stories of Coin St.

During the Inquiry, many witnesses had interesting stories to tell about Waterloo. Do you remember something about the streets, people, houses, shops, schools or the river that you'd like us to print. Send the stories (written or on tape) to 99 Upper Ground, SE1; or visit us and we'll tape it for you. Bottle or box of chocs of your choice for 'the Best'.

Coin Street Community Builders

Greater London Enterprise Board

In July 1984, the Coin Street sites were bought by Coin Street Community builders, a non-profit making company of which all the members are local residents. C.S.C.B. is working with:



LAMBETH



SOCIETY FOR CO-OPERATIVE DWELLINGS

Coin Street Development Group

A new group to keep YOU in touch with all the developments on Coin Street.

We hope all member organisations of the AWG and NSCDG will send delegates. Everyone welcome. For details ring: 633 6402

join ... CSDG

First HOUSING details

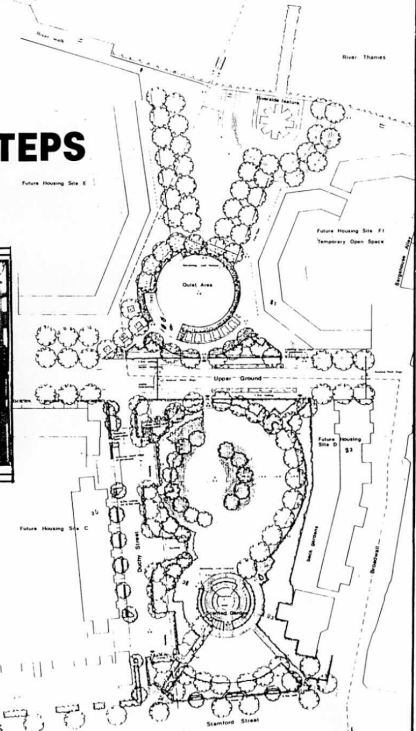
October of this year will be a milestone in the campaign to build family housing on Coin Street, because that is when contractors will begin building on our first housing site. (Site C - the carpark behind the Bar on Upper Ground).

Each of the 56 homes will have its own garden and there will be four terraces surrounding a communal space with play facilities.

The Society for Co-operative Dwellings are the development agents for this new housing co-operative. Lambeth and Southwark Councils are putting up the finance and will each allocate half the homes.

Most of the homes on this site will be for large families. 42 are for six person households; 2 are for 8 person; there will be 2 four-person bungalows specially built to the standards to suit people with disabilities. There are 10 smaller units - 2 person ground-floor flats.

We hope that these homes will be ready for occupation in October 1987.



ACTION

Waterloo Action Centre (WAC) is situated in the old library between Waterloo Rd and Lower Marsh market. It is the base for the Association of Waterloo Groups. This is the local neighbourhood council, it is made up of tenants' associations, housing co-ops, pensioners groups etc, and fights to improve the quality of life for everyone who lives in Waterloo.

WAC employs 4 full-time staff - an advice worker, 2 community workers and an administrator/resource worker. It is funded by Lambeth and the GLC, so like many community organisations is threatened by rate-capping and abolition.

ADVICE

The Shopfront Advice Centre is open Monday to Friday, from 10am-2pm and is run jointly by paid workers and local volunteers. On Mums we have a Bengali speaking adviser. We can give advice on Social Security, Housing, Housing Benefits, Pensions, Health. If we can't help you we can usually find someone who can. There is also a free Legal Service on Thursday evenings between 6.30-8. A team of lawyers will advise on employment, insurance, housing, compensation etc. All local people are welcome to use these evenings.

COMMUNITY WORK

The 2 community workers are employed at WAC to support existing groups and help with the formation of new ones. Groups which we work with include local Tenants Associations, an Amenities Group, a Bengladeshi Group, a new Housing Co-operative and a Women's Self Defence Course. Through Tenants Associations improvements have been fought for and won on several local estates.

Kids enjoying themselves at a puppet show. Organised by Waterloo Amenities

SUNRISE

On the hottest and sunniest day this year, some of the Committee and Members of the new Tenants Association got together in the square of the Duchy Street Peabody Estate. With encouraging support from the Tenants and the help of the Waterloo Action Centre, the T.A. has already got off the ground and has revived community interest and neighbourliness. Lots of problems and common issues have surfaced and the Committee meets regularly to discuss them. A Fete is being planned now for September. We wish them every success with the T.A. and hope the sun always keeps shining on them!



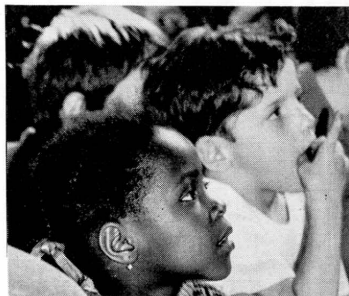
RESOURCES

WAC has a large hall which is used by Pensioners Groups, Youth Clubs, for Jumble Sales and meetings. We also have a photocopier, duplication and stencil, which local groups can use. There's usually someone around who can show you how.

Finally, the Association of Waterloo Groups has a Minibus based at WAC. Any member group can use this Minibus.

Please Remember - Waterloo Action Centre is for everyone who lives locally.

We hope you will continue to support us, not only by using our services, but also in our fight to stay open in the face of rate-capping and GLC abolition.



DEFENDING LAMBETH

Readers of SEL will know that Lambeth is still defiant in the ratecapping struggle. The local Labour Councillors Kathy Connelly and Terry Rich have been in the forefront of the battle and are pledged to support party policy of not setting a rate until the Government returns to Lambeth the millions of pounds taken from Lambeth in penalties. Terry Rich gave the following comments to SEL on the issue,

"As councillors our job is to try to run services for the benefit of the people of the Borough. In Lambeth today the depth of poverty and deprivation faced by the community is growing. Unemployment has risen 250% since 1979, with 30,000 registered unemployed

in the borough. Official estimates put at least a third of Lambeth families below the poverty line.

As councillors elected to represent working class people, we simply cannot respond to the problems, to the poverty we see around us by cutting services and the programmes that the Council is pursuing. We would be doing Thatcher's job for her.

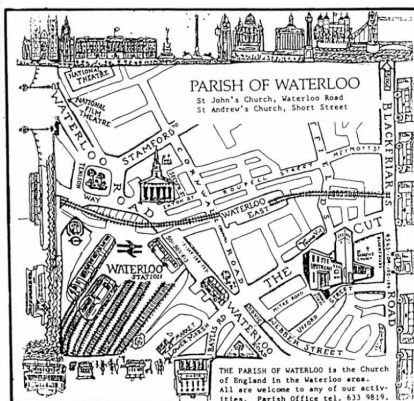
As a socialist council we are determined to tackle the disadvantages in our community, to improve the estates and the housing service, to tackle the injustices that face women, to stamp out racism which results in black people suffering poverty and disadvantage.

These are the policies the Government wants us to abandon. Yes, we are taking a personal risk, we could be bankrupted and disqualified from office. We have no choice but to defend ourselves and the Borough, and we can win."

DEADLINE FOR NEXT ISSUE:

AUGUST 28th

OUT SEPT. 6th



MORLEY COLLEGE PRESENTS

A TOUCH OF THE CLASSES

FREE!

FOR ONE WEEK ONLY

SPECIAL:

A preview of the week's programme all day on Monday 9th. September.

& FEATURING:

until Friday 13th. September from all of the departments,

Painting .. Drawing .. Music making ..
Writing .. Singing .. Dancing .. Pottery ..
Crafts .. Sport .. Cookery .. Computing ..
Travel .. Reading .. Maths .. Languages ..
Science .. Politics .. History ..
Social sciences .. & MANY MORE

PLUS:

Help advice and information on Adult Education

ENROLLING ALL WEEK
CRECHE AVAILABLE

OPEN 10-12, 1-3, 6-8

COME ANY DAY OR RING
928-8501 FOR DETAILS

10 YOUR LETTERS

LIVING TOGETHER

NEW HOMES ARE TO BE BUILT ON THE COIN STREET LAND. THE FIRST WILL BE STARTED THIS YEAR. WHO ARE THEY BEING BUILT FOR?

The campaign to defeat the Greycoats office development on Coin Street was fought and won around the slogan 'Homes and jobs for local people'. It is a simple phrase which neatly describes the people-before-profit philosophy of the community action which achieved this spectacular victory. It was hard work, but there is much more to come, now that we control the land, for we have to work out how to put the ideas into practice and how to make that slogan come true.

There have been months of discussion amongst local groups and with Lambeth Council who are paying for half the housing (Southwark Council are paying for the other half) over who the new homes should be for and, in effect, what 'homes for local people' really means. In those discussions we have always been clear that:

1. Coin Street homes should be rented to those most in need and this is the highest priority.
2. The housing waiting lists of Lambeth and Southwark Councils are the best guide to who is in housing need and should be used in doing the allocations.
3. Black people and all other ethnic minorities have suffered years of discrimination in housing, and we intend to ensure that there is no discrimination in allocating Coin Street housing.
4. More than this, we support Lambeth Council's policy of a 35% target in allocations for black people as a means of redressing the balance. We believe that Coin Street should play its part in redressing the balance. Though this is a borough-wide policy, at present it applies most in Waterloo because Waterloo is getting the lion's share of Lambeth's new housing money for the next two years.
5. The term 'local people' means everyone living in the area, every colour, race or country of origin, and when we work on behalf of the local community, we include everyone in that.

We believe that people living in Waterloo and North Southwark should have the opportunity of being considered for rehousing in Coin Street if they wish. To be eligible, they must be on their Council's housing waiting list, and we aim to ensure that everyone knows how to get onto the list and to assist them in doing so.

Building work on the first housing site is due to begin in three month's time and should be completed in two years. Lambeth and Southwark Councils will be controlling the allocation of these homes. They have agreed that we should monitor the process to see that it is fair and that local people are given an equal chance.

We look forward eagerly to the day when people are once more living on these long dead sites and bringing their life and energies into the Waterloo and North Southwark community which has fought so long and hard for this development.

Association of Waterloo Groups
North Southwark Community Development Group
Coin Street Community Builders
Waterloo Community Development Group.

Dear SEL

In the June SEL Diary, you made some comments about Mirror Group Newspapers bringing back life to the Reville building in Stamford St. It is the first time I have heard any remarks opposing bringing back industry to our area, that we were once noted for. You will see many empty derelict buildings that were once our printing industry. Behind Dorset House in Stamford St there are two examples. In Hatfields a very large building has been empty for 20 years. The other side in Paris Gardens we have the empty IPC magazine building.

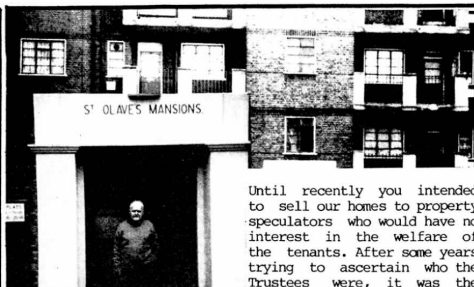
Facing the London Nautical School we have an old printing building which went back

to 1890 converted to offices. Is this what you want? I'm not just a local resident but a printer employed by Mirror Group and enjoyed working at the Reville building for over 20 years, until I was forced to follow my job across the river.

Get your facts right. For well over 10 years we have been fighting to bring employment and industry back to this area. If we allow your ideas to materialize, we will be objecting to the industrial plans for the Coin St site next.

John Hearn, Duchy Street

SEL Diary comment: We didn't think we gave the impression that we opposed this move.



An Open Letter to Mrs Lucy Brown, O.B.E.

Dear Mrs Brown

It is more with sorrow than anger that I write to you, Chairwoman of the St Olave, St Thomas and St John United Charities, because I am well aware of the great and unselfish work you have given to the people of Bermondsey and Southwark for many years.

The Charity is the landlord of St Olave's Mansions in Walnut Tree Walk where I have lived for over 40 years.

For some unknown reason the flats have been very badly maintained over many years with the administration ignoring verbal and written requests. The favoured excuse of your officers being 'the matter will be put before the next meeting of Trustees'.

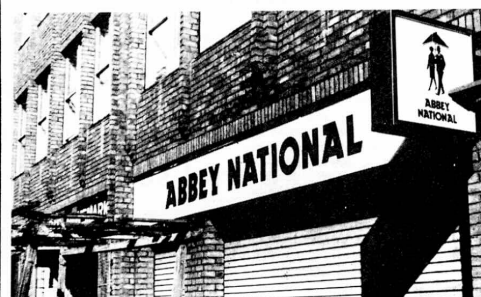
Until recently you intended to sell our homes to property speculators who would have no interest in the welfare of the tenants. After some years trying to ascertain who the Trustees were, it was the local Labour Party which came to our assistance and were able to persuade the Trustees to seriously consider the purchase of our homes by a socially responsible landlord, such as a Housing Association. Even now the future is by no means certain and this is causing considerable anxiety and distress.

The Charity is even failing to make full use of the property. It seems inexplicable that the Trustees should allow flats to remain empty while so many local people are on housing lists.

This is not a matter of politics. I hope that you and your colleagues will seriously consider this problem in the interests of the tenants of St Olave's Mansions.

John Keen
Former Southwark Councillor

UNFRIENDLY HABIT!



Dear SEL

I read with interest in the June issue the story concerning the closure of the Abbey National branch in Lower Marsh on Saturday mornings.

A number of local groups and individuals have already contacted me on this matter. I share their concern over this hasty and badly judged decision by Abbey National and I have written to their Chairman, Sir Campbell Adamson to inform him of my and the community's concern.

Abbey National is the only building society branch in Lower Marsh. It is therefore quite outrageous for the

Abbey National to abuse its monopoly power and impose an inferior service on local residents. This narrow minded approach also damages the trade of the retail shops in Lower Marsh if shoppers have to go elsewhere to get their money first.

I intend, in association with local people, to pursue this matter vigorously. People who have accounts with the Abbey National can assist by writing in protest to Sir Campbell Adamson, Chairman of Abbey National Building Society, Abbey House, Baker St, London SE1.

Stuart Holland, MP

MORE LETTERS

Dear SEL

The last edition carried an 'interview' with the Labour candidate in the recent GLC by-election. Fair enough - the more people know about local political issues the better. But why was there not even a mention, let alone a full article, about the other main political party the Liberal/SDP Alliance and our policies? Bias in the Tory-controlled Fleet Street press is bad enough: that a local 'community newspaper' should act in the same way is even worse.

The Alliance and John Medway (Bishops Ward SDP councillor) are working with local people to improve conditions in the SEL area, to get Lambeth Council (Labour controlled) to do its job properly and without waste. Any readers interested in joining us in this fight should contact me at 59a Backford Rd, SW9.

Yours, Mike Tuffrey
Liberal candidate
Vauxhall GLC by-election

SOUTH BANK SUMMER SHOWS

July 13th-14th Noon-7pm:
Free Arts and Crafts Festival with Cockney flavour at County Hall and along South Bank. Music, dancing, films, painting, pottery, and children's entertainment.

July 17th-22nd 11am-10pm
GLC Parks Exhibition, Royal Festival Hall Nature comes to the South Bank!

July 21st, 2-6pm
GLC/Capital Radio 'Brass Band Festival' at the Royal Festival Hall. Twelve London Brass Bands playing in and around Royal Festival Hall and Jubilee Gardens. Free Special Festival Concert at 7.30pm.

31st July-8th September
'London and its People', a GLC Photography competition. Royal Festival Hall

August 6th Noon-6pm
Hiroshima Day Festival Jubilee Gardens

August 11th
Children's Festival. Free Festival of fun for kids of all ages, especially for under-12's. Clowns, puppets, magicians, theatre, etc.

August 18th 3pm
Middlesex Yeomanry Association Band, playing in Jubilee Gardens

September 7th 11am-10.30pm
The Big One! A great free day out for all the family, with events along and on the Thames. Spectacular fireworks display at 8.15pm

Dear SEL

Many thanks for the copies of SEL and thank you for the grand write-up you gave my Dad. I was also very interested in the letter of Leslie Randall. Did he used to live in Roupell St? He forgot to mention. Baldwin's Sweet Shop was next to Coopers, all the kids called him shodder. It brought back lots of memories when I read those letters.

Do any of your readers remember the old picture house in Blackfriars Road, everybody called it the Bake. If you had spongers on Sat. you could have pie and mash, go to the pictures, also you could buy a bag of peanuts off the one-legged man that stood outside.

As for Banskide, I used to live with my Gran down there when it was all little houses and courts and you were right on the waterfront.

Sorry for all this scribble, but reading your letters was really great. Thanks once again.

Mrs E Smith (Daughter to Charlie)

NTH SOUTHWARK PLANTO GO AHEAD

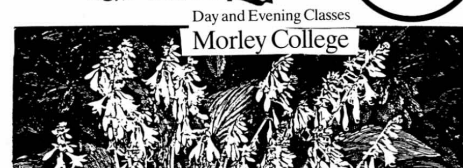
At the end of April the Inspector's Report on the public enquiry held last autumn to look at the Council's North Southwark Plan was published. After consideration of this Report, Southwark's Planning Committee will recommend to full Council that the Plan go ahead without alteration.

The Inspector's conclusions were often strongly at odds with those of the Council. But this was almost to be expected. Ted Bowman, Chair of the North Southwark Community Development Group, said that 'the Inspector had not acted impartially, he has shown a blatant bias. He has ignored the views of the majority of the local community.'

The North Southwark Plan, drawn up after wide consultation with the people of the area, is a radical reversal of previous plans for the area. These allowed office developments in western North Southwark to go on almost unchecked. Many traditional industries left the borough as a result and land prices rocketed.

The present Plan aims to put these trends into reverse. It is a Plan based on the needs of the community rather than on those of the property developers. It states that a community long subject to the bad effects of outside pressures should be protected in future by planning controls.

GARDENING WITH KEIB THOMAS



Bird Life
Timothy Sells/Tues 6.30-8.30/1363
University Sessional Class. Birds are a continuing source of interest. Their habits and importance in the environment will be explored in this two-term course which includes several field trips. Suitable for those with or without previous knowledge.

Ecology and Conservation Certificate Course 1 Physical and Ecological Basis of Conservation.
M. Llewellyn/Thurs 6.30-8.30/1364
University Class. This two-year course (24 classes each year) covers the complex factors associated with nature conservation and resource management: plant and animal distribution, geology, geomorphology, soils, evolutionary ecology. Suitable for those with or without previous knowledge.

The Diversity of Nature
Eric W. Groves/Tues 6.30-8.30/2M2X1365
This illustrated two-term course will provide an introduction to the wildlife in Britain by surveying its plants and animals, group by group, and will demonstrate how they are closely integrated one with the other in our natural environment. Field meetings and visits.

Landscape Architecture and Garden Design
Janis Malcolmson/Thurs 2-4/2M2X2227
Janis Malcolmson/Thurs 6.30-8.30/2M2X2228
In this two-term course we shall study garden design, examples of landscape design, with emphasis on drawing, planning, site planning, planning for maintenance, spatial planning. All work is project based. An additional £3 is charged towards materials.

History of the Garden
Janis Malcolmson/Thurs 2-4/2M2X2227
beginning 17th April, 1986
This one-term class traces the development of English gardens over the centuries, the influences from abroad which first shaped them, and the English conditions which made them unique.

Introduction to Community Work
John Newman/Mon 10-12 and 1-4/1DM5X1435
John Newman/Mon 10-12 and 1-4/1DM5X1436
beginning 13th January 1986
John Newman/Mon 10-12 and 1-4/1DM5X1437
beginning 14th April 1986
John Newman/Wed 10-12 and 1-4/1DM5X1438
beginning 15th January 1986
John Newman/Wed 10-12 and 1-4/1DM5X1440
beginning 16th April 1986

These one-term courses introduce the basic theory and practice of community work. They are aimed at volunteers, community activists and those who may want to prepare themselves for a professional qualification as well as people in the field who want an opportunity to develop their theory and practice. Students should apply in writing to John Newman.

Foundation Courses for Pre-School Playgroup Leaders.
All requests and applications should be made to the Inner London Pre-School Playgroups Association, 31/4/16 Vauxhall Bridge Road, SW1V 1AA (020 1401). On being a stamped self-addressed envelope. Enquiries for these courses are NOT dealt with at Morley College.

Tutors: Jackie Marshall and Shea Richardson. These three-term courses give practical training in the use and methods of pre-school playgroups for children aged three to five. Lectures, seminars and practical demonstrations are given by experienced tutors. Playgroups under training supervision are held at the College for mothers who wish to attend the course and bring children of three to five years; younger children can be accepted in the College Creche. There will also be a further course of three terms for mothers who have attended the basic course. This course will study child development in greater depth and consider the position of playgroups in the context of the wider community.

Plant and their Places
Michael Mullin/Wed 6-8/2M2X1366
Identification and environment of families of flowering plants and ferns with particular reference to the British flora. A variety of materials will be used, and there will be field trips.

Family Astronomy
John Duffin/Mon 10-12/2M2X1811
28 Sept, 19 Oct, 23 Nov, 18 Jan, 8 Feb, 8 Mar, 10 May, 7 June
Sept 28 at Morley College. All others at Greenwich Observatory. Space travel, life on the planets, the constellations, get us hooked on astronomy. Simple projects and the planetarium and observatory will be used. All ages, though ideal for over 8s.

Family Natural History
V.F. Taylor/Sat 10-12/2M2X1812
5 Oct, 9 Nov, 7 Dec, 18 Jan, 15 Feb, 15 Mar, 3 May, 24 May, 21 June
Natural history is fascinating in town or country. The choice of plants and animals studied will depend on the class and families will be encouraged to undertake simple projects.

Family Languages - weekly
The aim of these three-term classes is to provide an informal and relaxed atmosphere in which the whole family can learn a new language together and be encouraged to practice their new skills in their home. At the end of the courses they should have acquired a sufficient vocabulary of everyday phrases to make a visit abroad, or contact with native speakers much more enjoyable. The classes will be very varied and instruction will be interspersed with games, songs and dialogues in the language. Children must be five years of age or over.

CO-OPERATIVES, COMMUNITY AND ADVICE WORK
Running a Workers' Co-operative
Sheila Kelly/Tues 6.30-8.30/2M2X1439
This one-term course provides a basic introduction to what is involved in setting up and running a co-operative, legal requirements, financial planning and budgeting, taxation, marketing, as well as sources of finance are some of the nuts and bolts covered.

Creche Workers' Course
Christine North/Mon 10-12 and 1-3/1DM5X1486
This one-term course is intended to help creche workers achieve greater effectiveness and satisfaction in their work. It will cover early child development, the needs of parents, together with health and safety. The course will be both practical and discussion based.

Courses for ILEA School Governors
Derek Waters/Fri 7-9
Two separate six-week courses beginning 8th November, 1985/1M2X1495
7th February, 1986/1M2X1496
These courses, which are intended for those who have recently become school governors, will seek to help them to understand their function in relation to the general life and work of the school. Topics covered will include: the organization of the ILEA, the work and problems of the head, teaching methods, the streaming of children and interviewing techniques. By arrangement with the ILEA no fees are charged for these courses and postal applications can be accepted.

Course for Governors of ILEA Special Schools
Derek Waters/Fri 7-9/1M2X1497
Six-week course for governors of special schools beginning 9th May 1986

Thanks to a grant from the GLC, the National Theatre's Cottesloe auditorium is to re-open at the end of September. As part of its season it will be showing 2 plays by Debbie Hursfield about the growing up and growing apart of four working class girls, from October 3rd for eleven performances.

The scheme to link Blackfriars and Farringdon stations and create a rail link between North and South London has been agreed by British Rail. The scheme will involve building new stations at Union Street, Walworth Rd and Camberwell. It is expected that the rail link will be completed by 1987-88.

The Community Education Project at Morley College has just published its Annual Report for 1985. With lots of pictures and interesting texts about the work of the Project - to bring educational facilities to the local community in North Lambeth and North Southwark - it is available for free from the CEP building in King Edward Walk.

Lambeth council, after pressure from the local Labour Party, have declared numbers 54-87 Lambeth Walk an Industrial and Commercial Improvement Area. This will mean shopkeepers can have grants to improve their premises and will hopefully lead to vacant shops being brought into use.

In March 1984 Croda Gelatin closed its glue making factory in Grange Rd Bermondsey, making 70 workers redundant. 15 months later, tenants on the neighbouring Vauban Estate are complaining that the derelict site is an eyesore and hazardous to the children who can easily get on it to play. Croda, after making healthy profits for many years out of Southwark's workers have refused to clean up the site.

The Last Royal, a play about the disappearance of London's Docks, based on the local peoples' memories, is a good evening out. It will be shown at Spa Road Library (Lower Hall), Monday July 18th at 7.30pm and at the Bermondsey Village Hall, Leathermarket Gardens, on Monday July 29th at 7.30pm.

The Story of Bankside

Many SE1 readers enjoyed our interviews and the letters we received on Blackfriars in the old days. They might be interested then in **The Story of Bankside**, written by Southwark Council's Library staff.

It is mainly intended for younger readers but provides a good introduction to the history of Bankside but with too brief a section on the present day, particularly the way the character of the area has been destroyed by the greed of property developers.



The Obelisk, St. George's Road.

It sheds some light on our fading memories of the time when the area was an import-

ant London entertainment centre, dating back to the circuses. Astleys, in Westminster Bridge Road, was the earliest and opened in 1770. In 1809, the Royal Circus was converted into the famous Surrey Theatre, demolished in 1934.



The Ring, Blackfriars Road, c. 1920's.

The earliest Victorian music halls were in North Southwark and Lambeth. It was here on stage that the immortal Charlie Chaplin first showed his comic genius that was to carry him to the top of the world cinema in the 1920's. Born into a poor family his humour always took the side of the underdog.

The Winchester pub, still in Southwark Bridge Road, was probably the site of the first music hall. Not far from it was the Borough, or Raglan, in Union Street.

As this booklet shows, the area is still full of history. You can buy a copy for 50 pence from Southwark's libraries.



Coal hole cover, Blackfriars Road

SE1 EDITORIAL GROUP

Bob Gibbs, Sally Howe,
John Howes, Margaret Schofield,
Dave Scott, Chris Smith
Keib Thomas, Gerry Vignola,
Paul Wheeler



BROCKWELL PARK

Saturday 20th & Sunday 21st July
From 10.30am
ADMISSION FREE

THE LONDON BUBBLE

The Bubble Theatre Company.

CLAPHAM COMMON

Tuesday 23rd & Wednesday 24th July at 7.30pm
'THAMESMEAD TANZI'

Thursday, Friday and Saturday
25th, 26th & 27th July at 7.30pm
'MUMMY'

Friday 26th July at 10.00pm
'LATE NIGHT LIVE'

Friday 26th & Saturday 27th July at 2.30pm
CHILDREN'S SHOW - 'OUT OF THE VIDEO BOX'

Tickets: Evening £3.00 (£2.00 concessions)
Late Night £2.00 Children's Show £1.25
BOX OFFICE: THE LONDON BUBBLE - 584 3420

KIDS FREE SUMMER FUN

FOR THE OVER 5'S - 2.30PM DAILY - AUGUST 1985
ADMISSION FREE

Indiana Smith and the Temple of Gloom	
Monday 12th	Larkhall Park
Tuesday 13th	Agnes Riley Gardens
Wednesday 14th	Angell Park
Thursday 15th	Norwood Park
Friday 16th	Kennington Pk Extension

Theatre of Thelma's Marathon Madness	
Tuesday 20th	Vauxhall Park
Wednesday 21st	Brockwell Park
Thursday 22nd	Knights Hill Recreation Gnd
Friday 23rd	Myatts Fields
Saturday 24th	Clapham Common

The Tantalising Tale of Tiny Tumbleweed and the Turnip of Doom

Tuesday 27th	Streatham Vale Park
Wednesday 28th	Slade Gardens
Thursday 29th	Hillside Gardens
Friday 30th	Lollard St Adv Playground
Saturday 31st	Ruskin Park

FOR THE UNDER 5'S

Monday 29th July to Thursday 1st August
2.00pm each day at Lambeth One o'Clock Clubs
ADMISSION FREE

FEATURING

The Puppet Factory, Little People's Theatre,
Tim Webb's Punch & Judy, Shady Puppets
Di Sweeney's Puppets

For full venue details pick up a leaflet at any
Lambeth Library or phone Lambeth Amenity Services
Entertainments Office 622 6655 extension 361

STILL HAVING PROBLEMS WITH HOUSING BENEFIT ?

DO YOU LIVE IN PRIVATE HOUSING /HOUSING ASSOCIATION/CO-OP ?

DO YOU THINK THINGS HAVE GOT BETTER ?

WE DON'T.

Come to a meeting at WATERLOO ACTION CENTRE

14, BAYLIS RD. , SE1

Wednesday 24th July 7pm

COME AND MEET LAMBETH OFFICERS

CHRIS STEWART - HEAD OF PRIVATE TENANTS HOUSING BENEFIT

JOHN MASTERS - HOUSING ASSOCIATIONS AND CO-OPS

MARTIN WARD - LOOKING AT WAYS TO MAKE THE SYSTEM WORK

BABYSITTING ALLOWANCE OF £1.50/HOUR PAYABLE SO YOU CAN ATTEND.

The meeting will concentrate on general problems, but if you have a particular problem please fill out and return the slip below.

PLEASE RETURN TO WATERLOO ACTION CENTRE, 14 Baylis Rd, SE1 , BY 19th JULY

MY HOUSING BENEFIT PROBLEM IS

.....

.....

NAME.....

ADDRESS.....

.....