

# SEL

ISSUE 39 FEBRUARY 1986 FREE COPY

## CAUGHT IN THE ACT!



Philip Pollock at home

PHOTO: South London Press

Events in the long-running saga of the St Olave's, St Thomas and St John United Charities of Bermondsey took a dramatic turn after the New Year when four of those involved with the Charity were arrested by the fraud Squad. They were Philip Pollock, the former Clerk of the Charity, Benjamin Gurvitz, the former surveyor to the Charity and two business associates of Pollock, Barry Rosoman and Brian Glen.

They were all charged with dishonestly obtaining the freeholds of 30 houses in Kennington and 72 in Sydenham belonging to St Olaves. These properties are worth at least an estimated two million pounds!

Public interest in the activities of the Charity were first aroused by an article in the February 1985 issue of SEL. Since then the scandal surrounding this Charity has attracted the attention of national newspapers and has had coverage on TV and radio. In one of its controversial property deals, the Charity sold 13 houses in Walnut Tree Walk and Kennington Rd SE11 for an average of £4,000 each. Pollock, Rosoman and Glen were all directors of a firm called Flowerbrook Ltd which in the last three years has received £400,000 from the Charity for maintenance work on its property at

Fairlawn Park, Sydenham.

Stuart Holland, Labour MP for Vauxhall raised the case in the House of Commons in December. He strongly criticised the role of the Charity Commission in the affair. The Charity Commission is a government body that is supposed to regulate the conduct of all charities. Despite having notified the Charity Commission of his concern about the Charity in February 1985, no action was taken.

Stuart Holland said it was only the determined action of Vauxhall Labour Party and the tenants of St Olave's Mansions that prevented the sale of further properties and brought the activities of the Charity into the open.

The accounts of the Charity for the year ending 31st March, 1985 have at last been published and show more cause for concern. In that year the Charity paid a pension of £11,324 to its ex-clerk Mr Bryant (Pollock's father-in-law) which was more than the total amount paid to the poor and elderly of Bermondsey!

Meanwhile, the four charged have been remanded on unconditional bail until February 3rd. Their case is expected to be heard at the Old Bailey some time in the autumn.

## NOTHING TO BRAG ABOUT

SEL has a new 'community group'. Yet all is not what it would appear. Into our midst has jumped self-styled Baylis Road Action Group (the initials are surely no accident). It concerns itself with everything in SEL but not much it seems with Baylis Road.

One of the constant themes of their publicity so far is the blatant and calculated attempt to divide the community in SEL and stir up racial hatred. This is no accident, as the so-called 'community group' is nothing more than a cover for the racist National Front.

The 'chairman' & 'organizer' (and probably the only members of the group) are known sympathisers of the National Front. One of them, George Wright, was their candidate in the 1984 Bishops Ward By-election when he polled less than 100 votes.

The racists know there is no way that the people of SEL support them so they seek to operate in disguise but still peddle the same evil message. Watch out then for wolves in sheeps' clothing.

## BENGALI WOMAN ADVICE WORKER

There is now a sylhety woman worker at the Waterloo Action Centre especially to help sylhety people.

So if you have any problem, please come and see Jahan Choudhury at Waterloo Action Centre, 14 Baylis Road, SE1 or telephone 261 1404.

Every Monday between 10 and 2 o'clock, We will try our best to help solve your problems.

See Back Page...

বাহুমানী মহিমা কামি

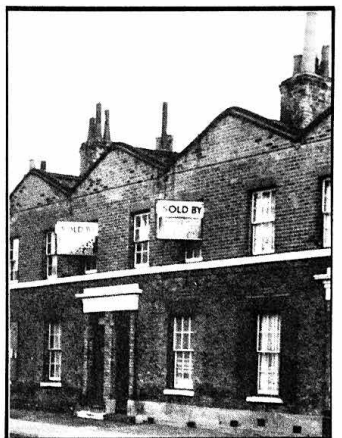
## THE PRICE IS RIGHT

Twenty terraced houses owned by British Rail in Pages Walk, off the Old Kent Road, which in September last year were valued at £140,000 by the District Valuer have been sold at private auction for a total of £438,000. Three weeks after the auction, two of the properties came on the market. Numbers 55 and 57 Pages Walk, which were sold at auction for £27,750 and £26,000 respectively are being offered for sale by the builder who bought them at £35,000 each.

About half the properties are currently tenanted. Although the tenants still have security of tenure under their new landlords, the signs are that rents may rise considerably. Already one of the tenants has been notified that the new owner has made an application for the registration of a Fair Rent which will raise the present rent by 160%!

British Rail did offer the tenants the chance to purchase their homes before the auction, and several did. However, many of the tenants, who on the whole are elderly and retired, were scared by the amount of repair work that needs to be done and were unaware of the possibility of getting financial help from the Council with repairs. The houses have outdoor toilets, many have lean-to kitchens, bulging walls and rising damp.

continued page 2



A Housing Association, Solon SE, had been negotiating with British Rail for two years prior to auction to purchase the terrace and rehabilitate it. Their proposal was strongly supported by Southwark Council. They intended to preserve and rebuild the front and completely demolish and rebuild the rest. A survey of the terrace found that it was structurally unsound. The tenants would have been rehoused by the Association and the rehabilitated homes would have been offered to people on Southwark's Waiting List. The Association had already agreed to buy six of the houses in the terrace belonging to Rich Investments for £5,000 each. The Association then offered British Rail £140,000 for their twenty houses. By law, they cannot offer more than the value fixed by the District Valuer. British Rail rejected this offer and with it the tenants' chances of decent housing.

The Campaign for Homes in Central London recently released a report on property sell-offs by public authorities. They note that despite being publicly owned, British Rail does not take social factors into account when selling off its sites. Since the 1981 Transport Act, BR has been required to sell off its surplus sites. The rules for land disposal are rigid: BR must sell on the open market to the highest bidder. Housing Associations, who provide low rent homes, are therefore at a disadvantage when it comes to bidding against private developers.

In the present property market, BR realize they can make considerable profits on their surplus sites. But at what cost we should ask to inner London's residential communities?

### Cathedral Ward Branch SOUTHWARK-BERMONDSEY CONSTITUENCY Labour Party

CLr Alan Davis &  
CLr Geoff Williams

#### ADVICE SESSIONS

If you have a problem, they would be glad to see you on:

2nd and 4th Fridays  
of the month at -  
Blackfriars Settlement  
44-47 Nelson Square  
7.00-8.15pm.

Wednesday, 19 February 6.30pm  
CHARTERHOUSE-IN-SOUTHWARK  
CENTENARY CELEBRATION  
Charterhouse Choir,  
Band & Symphony Orchestra  
Programme includes Gershwin's Rhapsody  
in Blue and a tribute to Jerome Kern  
Introduced by David Dimbleby  
(engagements permitting)

Tickets: £5 (includes refreshments after the concert)  
obtainable in advance from Charterhouse  
Southwark, 40 Tardis Street, London, SE1 (Tel.  
01-407 1128 and at the door on the night).



GEORGE MORLEY

## GEORGE MORLEY

### THIS IS YOUR LIFE

A frequent contributor to the letter columns of SE1 is George Morley who lives at St Saviour's College in Norwood. Trisha Anderson of the SE1 production team went to hear his story.

Before receiving the support of St Saviour's College in Norwood, George and Alice Morley's retirement seemed marred by housing problems, which forced them to move several times. St Saviour's College changed this situation quite dramatically. They now have a very cosy flat set in attractive grounds, with sundial and pink pampas grass, overlooking a small garden they tend themselves. George can sit back happily and reflect on the people and events which have coloured his long and varied life.

George was born in 1908 and spent his childhood in Walworth before moving to Blackfriars in 1916. There he attended the Christ Church parochial school in Bear Lane until he was 14. He vividly remembers the building of Southwark Bridge and its opening by King George and Queen Mary. He has very happy memories of his boy-scouting days as a member of the 15th Southwark Troop. The president was the then Liberal MP Ea Straus who was extremely generous and each year invited the entire troop to his country estate near Abingdon in Buckinghamshire. George remembers that on leaving the camp, each scout was given 2 rabbits to skin. They then sold the skins to a local merchant for the princely sum of 6d each.

However, memories of scouting days were not all happy. One of George's earliest memories was the death of 12 scouts from St John's Troop, Larkham Street. A memorial to the boys, who were drowned in a boating lake, still stands in

Nunhead Cemetery. George is anxious that the boys are not forgotten.

On leaving school at fourteen, George started as an apprentice cook. He was advised to approach the Army & Navy Club in Pall Mall to work with a French chef - Monsieur Blanchailles. After 'forging' a letter of support from his father (who had been badly injured in the gas attacks during the 1st World War and was hospitalised) George began his career at 7s 6d a week. After a year he moved to the Navy and Military Club in Piccadilly where he served under another French chef - Monsieur Patou. His career took him to many of the famous hotels in Britain such as the Gleneagles in Perth, the Grand Hotel in Bournemouth and finally to the Park Lane Hotel.

In 1939 at the outbreak of the War, George joined the Airforce as a volunteer, prompted by his devastating experiences as a stretcher bearer in Walworth, in particular the bombing of Saint Peter Crypt. George was stationed at Morecombe in Lancs, then moved to Moreton near Weymouth. He served there as Head Chef in the Officer's Mess and remembers many famous visitors to the camp including David Niven.

George has happy memories of his airforce days and of the many pranks the men played.

George's career in the Airforce ended in Doncaster where he served in the mobile unit. Before leaving in 1946, he managed to enrol on a City

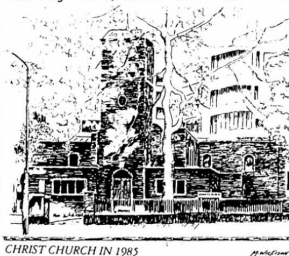
and Guilds course in cooking, although already a qualified 'Chef Tourneau'. Many of the other students were already qualified but they all enrolled for fun. His instructor Charles Creddock was obviously put to the test.

After demob, George worked in Veraswameys in Regent Street and then set up his own cafe - The Cosy Cafe - in Elstead Street, off East Street. After a few hiccups, the business thrived. Obviously food at the time was in short supply but George refused to get involved in black market trading and always dealt with Sainsbury's.

By now George and Alice had 3 sons. Life was hectic and they decided to sell the cafe and buy a house in York Road, Peckham. George went back to work as a Chef in the Park Lane Hotel, his last position. As his health was deteriorating (he suffered from bronchial asthma), he and Alice moved to Stevenage to live near their sons. Several moves followed including a spell at Blackfriars, near Christ Church, where Alice's father was a Verger. Finally they applied to St Saviour's for a flat where they have lived for the past 2 years. St Saviour's receives support from rents in the Borough market. In addition the traders are extremely generous

and provide fruit, vegetables and flowers for the various festivals celebrated at St Saviour's, a custom which is greatly appreciated by the residents.

Although now living in Norwood, George and Alice still attend Christ Church in Blackfriars which celebrated its half-centenary before Xmas. The church presented George and Alice with framed reproductions of the new stained glass windows. The pictures, signed by the congregation, were in recognition of all the hard work George and Alice have done over the years on behalf of the Church. George and Alice clearly have many more happy and productive years ahead at St Saviour's.



CHRIST CHURCH IN 1985

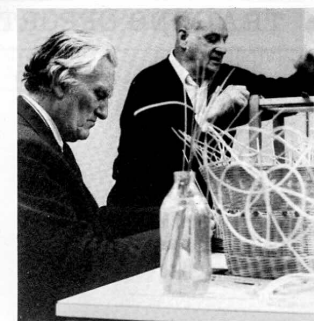


## STONESEND DAY CENTRE

Stonesend Day Centre for the elderly disabled and the elderly opened its doors in November last year at its new location in purpose built premises on the Scovell Estate, Scovell Road.

Run by Southwark Social Services, the Centre moved from Pakeham Day Centre in Pockock Street where they had been for 15 years in premises which were meant to house them for only a couple of years. Now the staff and users are more than pleased with their spacious new premises.

There are 4 staff at the Centre, Nell and Barbara are full-time, Jenny works four days a week as a craft teacher and Carol works as the cleaner.



The Centre has a wide range of facilities and activities. It has a crafts room with a comprehensive range of activities; meals on wheels provides lunch every day and there is always tea and coffee available at modest prices, and there is a small shop selling small articles; there are very good bathing facilities and the staff want to encourage families to bathe elderly relatives at the centre; there is a hairdresser who comes in daily; a chiropodist once a month; there are keep-fit classes on Tuesdays; Sports Watch comes for indoor sports activities; there is a quiet room with TV, talking books and newspapers; Bingo sessions are held on Thursdays and there are also card games.

The Centre is open five days a week, Monday to Friday from 9am to 5pm. The users are mostly referred to the Centre by the Social Services which arranges transport. Presently the Centre has a register of 75. They always welcome more people and would welcome people who are able to walk to the Centre. If you would like more information about the Centre, the number to ring on 403 5336.



**Adult Education**  
Morley College 61 Westminster Bridge Rd SE1  
CRECHE AVAILABLE  
TEN WEEK COURSE

### CREATIVE WRITING FOR WOMEN



Mondays 1-3pm

...DROP-IN ANY MONDAY...YOUR FIRST VISIT IS FREE!  
For further information contact Lorraine Price  
928 8501 ext.156

#### KITCHEN ATTENDANT

Morley College requires a Kitchen Attendant to assist Cookery Tutors in the running of their classes at Westminster Bridge Rd Annex

Hours are: Tuesday and Wednesday Afternoons and Evenings & Thursday Morning and Evening (Total: 16.5 hrs per week at approximately £2.50 per hour). Term time duties only.

Apply via Schoolkeeper  
(Mr Thorogood)  
Morley College,  
61 Westminster Bridge Rd  
928 8501

JOB VACANCY!

**AFRO-CARIBBEAN LITERATURE**  
A study of the history of afro-caribbean literature and of major themes & issues. Themes include the language issue in the history of Caribbean literature and society, and the voice and the written word. Among writers discussed are Earl Lovelace, CLR James, Merle Hodge, Jacques Roumain, Louise Beenet.

The course will also consider the work of caribbean poets presently living, writing and also presenting their work orally in Britain

For details ring Morley on 928 8501  
Classes 6.30-8.30  
Mondays for one term

**WEIGHT-LIFTING**  
There is a course preparing people for the British Amateur Weight Lifters Award starting at Morley on Saturday 1st Feb, 10-12. The course is free, but BAWLA charge an exam fee of £20. This qualification qualifies people to teach weight training or weight lifting. Ring Morley for details and ask for Jenny Thomas

#### CANTEEN ASSISTANT

Canteen Assistant required for three evenings per week (Monday, Tuesday & Wednesday term time only), to run Branch canteen for adult education students. Contact Edna or Margaret: 928 4601 for full details.

JOB VACANCY!

### Got a camera?

..... get the most out of it!!



**Know Your Camera**  
Lillian Baylis/Helen Bailey/Sat 10-11  
One-term class.

#### Branch Office

...open for term-time enrolments and enquiries at the following times:  
Lillian Baylis: Lollard Street, Kennington Road, SE11 6PY  
01-857 1128 (Mon to Thurs after 6p.m. and at varying times throughout the day)

\*PHOTOS: AMITA VALIA\*



Join us on Saturday mornings.....

.....and Get Snappy! GET HAPPY!!



## 4 TRAINING OPPORTUNITIES FOR WOMEN.

Nowadays, thanks mainly to the efforts of other women, women can get training in a whole variety of subjects, and in particular subjects that were once thought to be for 'men only!'

Featured here are a number of courses aimed at women that provide training in everything from car mechanics to micro electronics. In some cases the courses are for women only and I have marked this in, together with other information such as childcare provision and any training or travel expenses they may have, but when phoning or writing it's always wise to check out exactly what they do provide.

**WOMENS MOTOR MECHANICS WORKSHOP, BAY 4R, 1-3 BRIXTON RD, SW9. 582 2574**  
Provide a six month part time course for women only in car mechanics. All training is to nationally recognised standards.

**CHILDCARE EXPENSES AND TOOLS GRANT GIVEN.**

**W.E.B. 12, MALTON RD, W.10. RING 968 9139.**  
Provide training for women only in plumbing, electrics, bricklaying, carpentry and painting and decorating.  
**CHILDCARE AND TRAINING ALLOWANCE.**

**SOUTH WEST LONDON WOMEN'S WORKSHOP. RING 622 9208.**  
A new workshop for women only, providing training in micro electronics and computing leading to City and Guilds qualifications.  
**CHILDMINDING AND TRAVEL EXPENSES PAID.**

**SOUTHWARK WOMEN'S WORKSHOP, 2ND FLOOR, 164-180, UNION STREET, SE1. RING 261 0575.**  
Women only training in carpentry.  
**ALLOWANCES OR EXPENSES PAID.**

**VAUXHALL COLLEGE, BELMORE STREET, WANDSWORTH RD, SW8.**  
Is starting a women only introduction to computing in February.  
**THERE IS A CRECHE IN THE COLLEGE, BUT PLACES ARE LIMITED.**  
**RING MARION SINCLAIR ON 928 4611 ext. 7403.**

**ALSO .....**

There is a new Government skillcentre opening in Lambeth which will provide courses in electronics (women only) refrigeration and air conditioning, electrical installation and maintenance, radio and T.V. detail fittings, draughtsmanship, basic office skills, robotics engineering

**Stamford Wharf, SE1**



and office training. As an MSC centre, no provision was made for childcare, but a group of women have campaigned around this issue and have worked out a scheme with Lambeth council to provide money for childcare. RING 622 9208 FOR DETAILS.

**AS WELL AS THIS.....**  
Lambeth council are recruiting adult trainees (over 19) and apprentices (between ) in carpentry, electrics, glazing, plumbing, wood machining, heating and ventilating, plastering, painting and decorating. The training takes between 3 and 4 years, depending on the course. Whilst training you will be a council employee and will draw a wage. These traineeships are for women and men and the Council positively encourages women to apply, to join those already working there.  
**CONTACT THE APPRENTICE SECTION, 87, SOUTH LAMBETH RD, SW8. RING 274 7722 EXT. 2863.**

**AS WELL AS ALL THIS.....**  
The Lambeth Women and Work Project have published a directory of Training Opportunities For Women in Lambeth, which is **FREE**. Either ring them on 622 9208 or call in at the Waterloo Employment Project, Colombo Community Centre, Colombo street, SE1. any thursday afternoon to collect a copy.

**THE WATERLOO EMPLOYMENT PROJECT** also runs an advice service every thursday afternoon between 2 and 4 p.m. to help with any problems concerning unemployment or training.  
**RING US IF YOU WANT FURTHER DETAILS ON 928 8024.**  
**W.E.P. COLOMBO COMMUNITY CENTRE, COLOMBO STREET, SE1.**

★ WEP/AGM, Wed, 12 Feb, at WAC 14 Baylis Rd, SE1 All Welcome. ★

## KIDS' CORNER

Hello there, everyone, and welcome to the first Kids' Corner of 1986.

To start with, The winners of the Christmas Competition, such was the response to the competition, there were six winners to pick out. But first, the answers.

X M A T H R E E K I N G S C H I C A G O S C H T  
C A R O L S X T X I T I S T V A R L A I T E  
S T B M A S P U D D L E M S L E G N A N P N X  
A I O C R A C K E R S A C L I S A N F D T E  
M N R T H R E E K I N G T O S G M S I D O D M  
X M A S F A I R Y L I G H T S H A T A G T D I  
L I N G N O T A R O C E D T T A D A L G E U M  
O N C R E T I E M T R I L E G E R L O L P O  
S C E O E D I T R M S C T S O E C O L E T S T  
A E C A R D S N D O N E U I R C I N C S A N  
S P E K A T S A D P T S B U F F A L O A I M A  
E R N N O A A X I N I D D U P S A M U P  
T E A G A T T I E M I S P R E S S A L D C S  
R F N S A T T I D M I T D E W I O N H V T  
A O S Y O T D T T R O A T I M R S T E N E R L F  
P R T T H R E E K I N G S I R H C S U S E D E F

There's no competition this month, due to the fact that the Super Bowl is taking pride of place, of which there will be a report in next month K.C. Now a lot of you are wondering if I'm a big hairy monster, well I'm not, so don't be scared to write in with your poems and stories, to the usual address, SE1 KIDS' CORNER, 12 MEYMOTT STREET, SE1

Speaking, of which I've got one for now, I hope you enjoy it....

**A. RAM OF SORTS, by Christopher Smith.**

A ram who's horns have shrunk, in the rain and snow, Unworthy of which once so proud, to go so low.

Once so high and mighty, now down with luck and pain, Wondering if ever to be, high and mighty again.

The truth always breaks the strongest, and the strongest of beliefs, People are the stumbling blocks, walls and hurdles, In the way to the achieve.

Then people start thinking, trying too hard, too often, Only mighty once, never twice, never takes the soft option.  
Always keeps in hiding, never coming out, Never speaks, never shouts.

Then things get disturbed, but then thy is forced to speak, No-one is going to hide, so thy cannot seek.

Bring thyself to normal again, back to defending old forts, But when it comes to all the emotions, Thy Is A Ram of All Sorts.....

## INSULATE HELP WITH INSULATED YOUR HOME

**Heating and Draughtproofing**

**WARM UP!**  
In the next few weeks, local pensioners groups should be learning about the benefits of draughtproofing and how to get it done very cheaply or even totally freely.  
This is because of a project at the Waterloo Action Centre that has recently been launched to inform local pensioners about ways of keeping warm and keeping bills down at the same time. We also hope to run a session for

home helps so they might inform people who they work with who are mostly housebound and unable to get to pensioners meetings.  
The talks will consist of a short video, followed by a discussion, and we hope to have inspectors from Lambeth Heatwise ready to make appointments to come and inspect and assess the cost of any work to be done. They will also process the claims for the costs to be met by the DHSS, where appropriate.

Graham Nicholas

## KIDS' CORNER

with CHRIS SMITH

Now the six winners, the first winner receives £10 and a SE1 T-shirt, and the five runners-up receives SE1 T-shirts.

**WINNER: Jamie Cousins, 15 Croydon House, Wootton Street, SE1**

**RUNNERS-UP: Melanie Smith, 83 Roupell Street, Waterloo, SE1.**  
**Ian Cousins, 15 Croydon House, Wootton Street, SE1.**  
**Daniel Gagatt, 11 Winchester Buildings, Copperfield Street, SE1.**  
**Julie Jennett, 120 Block, Peabody Estate, Duchy Street, SE1.**  
**Juliet Carpenter, 7 Merrick Square, SE1.**



COMPETITION WINNERS PHOTOS.

**FIRST COMP. SETTER: Runner-up MELANIE SMITH** displaying our T-shirt, after entering the Christmas Competition.

We was to have a picture of the winner of the Christmas Competition, Micheal Huggett, but he was ill, when the photo was due to be taken. Sorry, Mike.



**TRIPLE TRIUMPH: The Cousins of 15 Croydon House, Wootton Street are beaming after all netting victories in the last two SE1 competition. From Left to Right, Ian (runner-up Xmas Comp.), Jamie (winner Xmas Comp.) and Andrew (runner-up Nov. Christmas Comp.)**



**CHICAGO BEARS**



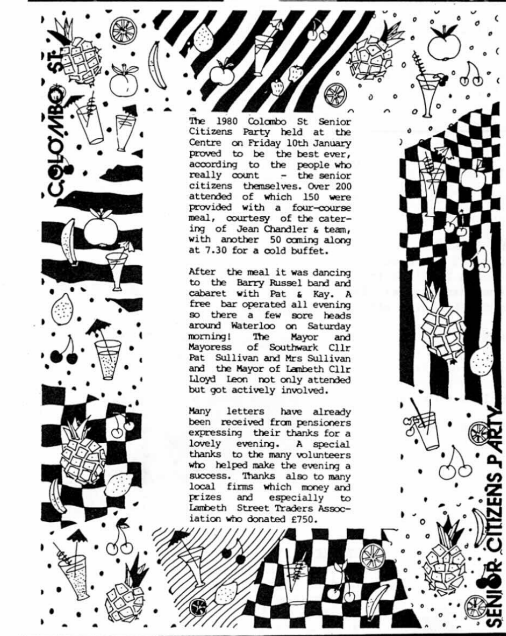
**NEW ENGLAND PATRIOTS**

**WELL, that's all for this month.**

See you next month, 'til then, have a happy February, Chris XXXX

**LAST**

★ **W.E.P./AGM.**  
6-30pm Wed, 12 Feb, at WAC  
14 Baylis Rd, SE1  
All welcome, it may be our last one.  
Refreshments afterwards.....  
★ **Waterloo Employment Project**  
★ **CHANCE?**



The 1980 Colombo St Senior Citizens Party held at the Centre on Friday 10th January proved to be the best ever, according to the people who really count - the senior citizens themselves. Over 200 attended of which 150 were provided with a four-course meal, courtesy of the catering of Jean Chandler & team, with another 50 coming along at 7.30 for a cold buffet.

After the meal it was dancing to the Barry Russel band and cabaret with Pat & Kay. A free bar operated all evening so there a few more heads around Waterloo on Saturday morning! The Mayor and Mayoress of Southwark Cllr Pat Sullivan and Mrs Sullivan and the Mayor of Lambeth Cllr Lloyd Leon not only attended but got actively involved.

Many letters have already been received from pensioners expressing their thanks for a lovely evening. A special thanks to the many volunteers who helped make the evening a success. Thanks also to many local firms which money and prizes and especially to Lambeth Street Traders Association who donated £750.



This organization was started about 5 years ago to help Bangladeshi women living in North Southwark. The main aim is to take women out of isolation. They are setting up a Bangladeshi Womens Centre with an Urban Aid Grant from Southwark.

The cultural evening held on Sunday 29th December at the Rockingham Community Centre was the first of its kind in this area and solely organized by the Bengali Mahila Samity.

The function was well attended by over 350 people and proved a great success for this local organization. The Bengali Womens Association would like to express their thanks to local people, officials and politicians in Southwark who are continuing to support the organization and its work.

## HOUSING

**Stamford Street:** Hopes that major repairs to Stamford St. would finally go ahead got a boost just before Christmas when Cllr Lesley Hammond (vice-chair of GLC housing) ended the GLC architects' delaying tactics and put the scheme out to private architects.

With government permission to go ahead with the boarded up houses (Nos.95-103) and with the rest of that block already agreed, it only needed Lambeth to arrange for people to move out of two houses so that work could start. As houses were completed, tenants would be moved sideways into them to allow their own flats to be done. With the promise of central heating and a facelift to kitchens and bathrooms, most tenants agreed to the move.

So far, so good. Could the tenants' luck have changed at last? Unfortunately not.

The government had approved £350,000 for the boarded up houses. But when the surveyors went in to prepare a contract to place with a firm, it was just as the tenants had warned last summer. Failure to keep them safe from vandals, thieves and the weather meant that the houses were now little more than shells. Most of the copper pipes and wiring were gone, fires had been lit on the floors, and most of the roofs were gone.

So now it's back to the drawing board for new estimates and new government approval. And it all has to be sorted out before the GLC is abolished on 31st March. And the work to the rest of the block is at risk too, since the plan was to move tenants into the empty houses as they were completed.

### Survey

The other block in Stamford St (nos.65-89) haven't been having too much luck either.

At a tenants meeting back in July, the GLC and Lambeth agreed that they would survey these houses to see if they had the same problems as the other block.

At the end of November it came out that there had been a breakdown of communication between the two councils. A new request, according to Lambeth, was sent before Christmas asking the GLC to set the work in motion. By the middle of January, the GLC were still saying they hadn't received it. Let's hope it turns up before County Hall turns into a hotel.

**Aquinas Street:** The land has now been bought from the GLC and should be transferred to the co-op by Easter.

So now we have to wait till March to see if the Housing Corporation who give out the money are going to give us the cash to start building the houses this year.

In the meantime, the warehouse at the Coin Street end of the site will be used as a temporary workspace by a group of artists.

**The Cut Site:** The fortunes of this site come and go faster than the tides. In mid December, the Housing Corporation met with local people and said there was a very good chance that they would give it the go-ahead this year.

A week later, they were saying, "Yes, you can have the money, but only if you take it away from another co-op in Stockwell." And it's the same co-op whose money was transferred (or pinched they would say) to Aquinas Street some 18 months ago, in an earlier bit of financial wheeling and dealing.

It was hoped that the GLC could come up with the money to buy the site before it goes in March, so that Stockwell could get the other money. But it seems now that the GLC may not be able to deliver (it's winding down and staff are looking for other jobs).

And it gets worse. Everyone had assumed that the Cut site would pass to Lambeth when the GLC goes. Not so, says the government. It will go to the residuary body - set up to tidy up the mess left by the GLC abolition, and they will probably sell it off to the highest bidder.

The good news is that Waterloo has got together with people from the Stockwell co-op to try to persuade the Housing Corporation to fund both sites, and not allow us to be played off against each other.

### Name a Co-op

In case the money comes through, we need to legally set up a co-op which will eventually run the houses and flats on the Cut Site. So the local Steering Group are looking for suggestions for a name. Offers so far include:

Beehive Housing Co-op  
Pear Tree Housing Co-op  
Emma Cons Housing Co-op  
The New Cut Housing Co-op

So lets have your suggestions - drop them into Waterloo Action Centre.

## News

**Climsland House:** Tenants have just completed a survey of the new windows fitted last year. It's worse than expected - out of 12 flats visited, the vast majority of windows were jammed shut or jammed open. Some were letting rain in, and many had draughty gaps around them.

The T.A. has asked Mike Tuffrey - the GLC councillor - to get the officers responsible to a meeting of the tenants this Thursday (30th Jan.). Like so many problems in Waterloo at the moment, this one has to be solved

before the GLC, whose workmen built the windows, disappear forever.

The block will be transferred to Lambeth on 31st March and will join a long queue of estates in Lambeth requiring work which the government is determined to prevent.

**Aquinas Street:** Good news. Work has started on two of the four remaining cottages. After being turned down 3 times, the other two have finally got the go-ahead from the government. Work should start soon.

## Helping Women With Children To WORK.

COURAGES NEW EC. FORUM

With the development of the Courages site well under way, Courages New Economy Forum has a GLC grant to research into childcare provision for employees in the thirty new industrial units.

The need for adequate childcare has been highlighted because without it, women are often prevented from working at all. In North Southwark, women with young children are particularly handicapped because of the shortage of under 5s childcare places.

At the same a very high proportion of all Southwark's households are headed by a single parent - 97% of whom are women - and more married women are having to work full or part time to help support their families. As a result, a higher proportion of women in Southwark are forced for economic reasons into full time work than in the country as a whole, yet they are faced with inadequate childcare facilities.

Whilst carrying out our research, we have been concerned to see that the Council's housing plans for the site do not appear to include any community facilities.

DOES THIS GOVERNMENT REALLY CARE?

Tired? Yes, that's exactly how we feel,  
Worried? Very, when will we get our fair deal?  
Bored? Yes, of what we've already heard,  
For we believe that actions should speak louder than words.  
Got children? Yes, but they are suffering too,  
Sick? Yes, but this Government haven't a clue,  
On the dole? Yes, but they'll soon take that away,  
So come, let's work together, and don't be led astray.  
Got a flat? Some have, but we'll soon be on the road,  
Fed up? Yes, of carrying this heavy load,  
Working? Yes, put don't put our hopes too high,  
For this month we've money, but by next month we'll be dry.  
Got good hopes? No! there'll soon be world war three,  
Comfortable? No! for it's Nuclear we can see,  
Wondering? Yes, when will this Government show,  
Feelings for the public? Well: We just don't know.

Written by Justine Camille

## Gardening with keib 7

**Alpines are perfect plants for windowsills or where space is limited**



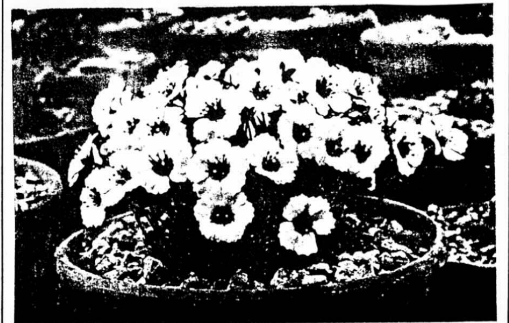
CAMPANULA ALLIIONII ALBA.

**They are very hardy and grow happily in 6ins. clay pots even in exposed sites.**



PHYTEUMA COMOSUM.

**For cheap, healthy plants, visit George and Margarets plant stall. Open 12.00-3.00pm, Wed to Fri Lower Marsh Market.**



SAXIFRAGA BURSERIANA VAR. CRENATA.



Every month, LWT - London's weekend ITV company based on the South Bank - will be providing information on this page for SE1 readers.

Box 33 belongs to LWT's London Community Unit, the LCU. It's the address you see whenever LWT has information to offer after a programme. And it's used for the LCU's own Community Information Service, which publicises the work of a different helping organisation each weekend in short advertisements which go out between the programmes. Recent LCU adverts have been about Keeping Warm, a scheme which gives pensioners the chance of having their homes insulated free, Twins Club which offer help and support to parents of twins, triplets, quads and more, and the National Association for Widows.

Viewers can phone for information too. Last September, the LCU launched Wake Up London, a weekly programme for 7-14 year olds. Each week, the Vicious Boys - recently London's street entertainers of the year - get involved in a different activity. After

the show, you can ring 222 8070 to find out how or where you can get involved too. This year, the Among future projects the LCU is working on is an action pack to accompany City Safari, LWT's forthcoming series on wildlife in London. It's surprising how wild animals, birds and plants thrive in the city environment, and how we ignore them. For example, kestrels have been coming back to London in recent years. In fact, you can see them circling near LWT's building looking for prey, especially since demolition work for the Coin Street development started. The LCU's action pack, expected to be available later this year or early next, will describe what you can find in different wildlife habitats in the city and how you can get involved in conservation.

We'd like to know what you want to hear about the television company on your doorstep. Drop a line to the LCU at Box 33, or write to the Editor of SE1 and we'll try and cover the subject in future editions.

Paul Coueslant  
LCU



## CENTURY HOUSE — PUBLIC INQUIRY SET TO BEGIN

Attempts by a property development company to build a variety of commercial developments on land set aside for much-needed housing in Waterloo will be put to the test shortly. A Public Inquiry is to be held, opening on March 4th, into plans by Kensington Commercial Properties to build on vacant land at the end of Pearman Street, by Westminster Bridge Road, and to increase the size of the already massive Century House office block which stands next to the site.

Diligent readers of SE1 will recall that the Century House building accommodates the secret operations of MI6. Diligent SE1 drinkers will no doubt remember the Tower Public House which stood on the site next door, on the corner of Morley Street. The pub was demolished recently, after the property developers bought it to add to rest of the adjacent land, which has for many years been an eyesore and a disgrace.

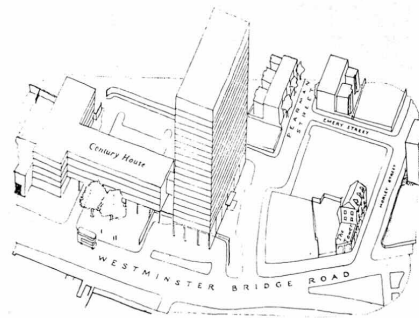
The vacant land (excluding the site of the pub) is allocated in the Waterloo District Plan to provide some of the future housing in Waterloo for which local people have so long fought. If the property developers get their way, it will be a setback for this fight.

Local residents will be giving evidence at the Inquiry to explain why they don't want these schemes to go ahead. SE1 readers are urged to attend the Inquiry and hear the arguments being put. It will be held at the Hawkestone Hall, at Kennington Road, and will probably last for several days. Attempts are to be made to arrange for an evening sitting of the Inquiry for the benefit of those who work during the day.

For more details about the Inquiry, or about the developers' plans, contact Steve Barran on 633 9291, or call in at 99 Upper Ground.

What do the developers' want to build?

This is a difficult question to answer, because three different plans have been submitted. It is also difficult, because it is hard to believe that the developers really want to build any of these schemes. Instead, it looks more likely that they want to persuade the powers that be to have the land changed from housing land to commercial land, so that in future they could come out with the scheme they really want to build.



### Waterloo Community Development Group

The next two meetings will be on  
Wednesday February 26th  
Wednesday March 26th

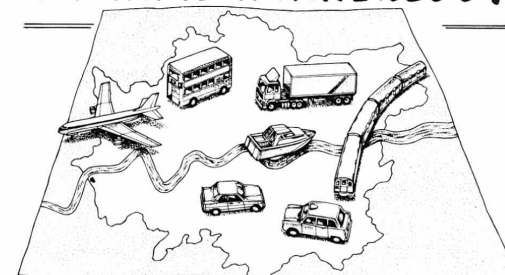
Both meetings will begin at 7.00pm  
and will be held at

99 UPPER GROUND, SE1



Lambeth councillors on the march!

## CHANNEL TUNNEL — TERMINAL at WATERLOO?



The national media has been awash of late with stories concerning the construction of a Channel Tunnel. To read some of the reports you would think this twenty-two mile tunnel is going to cure all our economic problems and solve unemployment instantly.

One point which has been overlooked is British Rail's unilateral decision to place the terminal for the Channel Tunnel at Waterloo station.

The whole idea of a Terminal for the Channel Tunnel is a strange one since it assumes all journeys will be between London and Paris and nowhere else! Travellers from the rest of the country will have to catch a train to London and then change at Waterloo.

The idea of a single terminal completely wastes the unique opportunity to integrate the Channel Tunnel into the national rail network. If British Rail did this rather than spend £200 million on a prestige Waterloo Terminal it would allow through journeys to the continent from major towns throughout the country. This would spread the benefit of the Tunnel in terms of increased traffic and employment throughout the country.

Another consideration is British rail's obsession with the need for customs facilities at Waterloo. In the rest of Europe with long experience of travel between countries by train, customs clearance is done on the train during the journey thereby saving the passenger

time and allowing trains to compete with airlines.

Unless reasoned argument prevails, British Rail is all set to build a White Elephant at Waterloo Station with disastrous consequences for the local community. SE1 reported on the Channel Tunnel Terminal at Waterloo three years ago and outlined some of the major problems which could result (see below).

We repeat the question we asked then... "Is anyone listening at British Rail?"

What became clear in the discussion is that several sites had been considered, including the Olympia site in Kensington. However, British Rail did not pursue that due to local opposition! It also became clear that the main reason for having one

single terminal was for customs clearance for travellers. However, several people pointed out that customs clearance in Europe was normally done on the train itself. Indeed, having customs clearance at the start or end of a journey would make the journey time by train much less attractive, and reduce its competitiveness with air travel to European cities!

The BR spokesman was unable to answer this point satisfactorily and it is obvious that more research needs to be done on the reasons for a single terminal. The point was made by Vauxhall MP Stuart Holland that vain attraction of the Tunnel was that people from all over Britain would be able to travel direct to Europe without changing trains! BR's present insistence of a single terminal at Waterloo would mean that everyone would have to change

trains in London rather than travel direct - somewhat defeating the point.

Several people said that a Terminal could create jobs in the area and make Waterloo a livelier place. Others thought that any jobs created would only be at the expense of others lost, as with the present work in firms under the viaduct. Terry Rich, local Labour councillor, mentioned the example of the area around Victoria Station whose residential community has been largely destroyed by commercial development.

The real fear that many people had was not over the merits of the Channel Tunnel but the effects of speculation and uncontrolled development would have on the area surrounding Waterloo Station. British Rail had not considered this as it is nothing to with them. Many local people were concerned about further sites being 'blighted' as developers waited to see if a Channel Tunnel Terminal was going to be built here. The tragedy is that the Channel Tunnel may never be built or a terminal sited here but the 'hope value' of the scheme for property speculators may hamper the continued development of Waterloo as a residential community.

We are entitled to ask that BR and other interested parties give serious consideration to all the available sites for a terminal. More importantly, serious research should be done to see if in fact a single terminal is the best approach, both for encouraging use of the Tunnel and for the local area.

Anybody listening at British Rail?

# 10 CHOPpy waters for Bermondsey heliport

Local residents are joining forces with residents from Wapping and other interested groups to give evidence at the public inquiry into the heliport proposed by Star Aviation at Chambers Wharf, Bermondsey.

Despite apparent opposition to the project from the LDDC, worried about the effect the proposal may have on luxury developments in the area - such as Butlers and New Concordia Wharves - and the total opposition of Southwark Council, the community knows

that there is no room for complacency.

It is Tory policy to establish a permanent replacement for the Trig Lane heliport which is closing in September. As far as local people are concerned, it's not going to be at Chambers Wharf and they're going to do all they can to convince the inquiry inspector of that in April.

The organisation formed to take on Star Aviation is called CHOP. For more details contact Simon (928-0711) or Maggie (231-0916).

## IT'S NEVER TOO LATE TO GET FIT

Are SE1 readers the fittest & healthiest people in London? You could be. Morley College has recently opened a fitness room. Four of the machines were bought with the aid of a grant from the GLC which the Association of Waterloo Groups applied for.

Although it is still a new facility, 231 women and 98 men are already using it. A large number live locally. If you're not one of them yet, come along to a free session for local residents, 5-7pm on Mondays and 12-2pm Fridays. There are lunchtime and evening classes every weekday, in either weight lifting or fitness training using aerobic exercise and light weights.

There are too many gyms with broken machinery, or where muscular men heave huge

weights, and intimidate newcomers by their presence. This facility has attracted so many women because there are sessions especially for them where they can exercise together without feeling 'unfeminine' or put down.

Prejudice and discrimination against women in sport still abound. Classes such as those at Morley and films such as 'Pumping Iron 2: The Women', are teaching women to be more confident of their bodies and themselves. One group of women in their 70's have taken up weights for the first time in their lives and find they can lift as much as many young men!

If you would like some advice about which session would be right for you, ring Jenny on 928 8501.



## YOUR LETTERS

Dear SE1

I would like to say that on 10th January when we went to the Senior Citizen's New Year Party at Colombo St Sports & Community Centre what a great time we had. There was plenty to eat and drink, plenty of singing and dancing, and it cheered us all up for the New Year. I had a dance with the Mayor of Southwark and the evening was lovely. Thanks to all concerned.

I would also like to thank Linda at the Borough Community Centre for the Christmas money presents they gave the Old Age Pensioners.

Mrs and Mr Dunley, 44 Pattinson House, on behalf of 11, 14, 31, 45 and 46 Pattinson House, Marshalsea Estate

Dear SE1

A number of local people have sent me leaflets from an organization called the 'Baylis Road Action Group' (BRAG). My own investigations and the content of these leaflets indicate quite clearly that

this so called community group is nothing more than a cover for the National Front.

Its propaganda is designed to divide the community and stir up racial hatred in the Waterloo area. In case anyone is any doubt about this, the address of this organization is the address of the National Front candidate who stood against me in the 1983 General Election. The emergence of this so-called community group now is clearly intended to feature in the local elections in Lambeth this May.

Local people have worked hard over many years to gain improvements for all the community in SE1, and I have been proud to work with them. I look forward to considerably more achievements in the future. I trust that no one in Waterloo will be taken in by the vicious and destructive propaganda of this group and that no one will let their words poison our community.

Stuart Holland MP

## Ever thought of setting up your own market stall?

### MARKET STALLS AT HALF PRICE TILL END OF MARCH

Lambeth Council is offering daily licences on three famous sites

LOWER MARSH (The Cut, Waterloo)  
BRIXTON MARKET (Brixton Station Road)  
LAMBETH WALK

Only £6 a day at Lower Marsh & Brixton  
£4 a day at Lambeth Walk

There are some restrictions on what can be sold, so phone the street market staff before you buy your stock.

Contact them on 274 7722 Ext 2530, Monday - Friday between 9 and 10am for advice and help. Licenses are issued every morning at the market. (No barrows provided)

Applications are welcome from people regardless of race, creed, nationality, disability, age, sex, sexual orientation or responsibility for children or dependants.

**LAMBETH SERVICES**  
WELL WORTH DEFENDING



Terry Rich & Kath Connelly campaigning outside WAC

## 1986 ENERGY EFFICIENCY YEAR COME IN FROM THE COLD

TO A ONE DAY



GOVERNMENT  
CHANGES TO  
SOCIAL SECURITY

ON WEDNESDAY 12TH FEBRUARY 1986

AT BELLS GARDENS COMMUNITY CENTRE  
BULLER CLOSE, SE15  
(OFF PECKHAM HILL STREET)  
No 63 BUS

12 NOON TO 6 PM

Displays  
Practical demonstrations  
Benefits  
Draughtproofing  
Videos

Refreshments and  
creche

2 TO 6 PM

Speakers on:  
Fuel poverty and elderly  
people.  
Social Security changes.  
Heating systems and  
housing design in  
Southwark estates.

Speakers include:

Beth Lakhani  
CHILD POVERTY ACTION GROUP  
Malcolm Wickes  
AUTHOR OF 'OLD AND COLD'  
Penny Newell  
WELFARE RIGHTS OFFICER  
Harriet Harman MP  
DIVIDED  
Lali Makkar  
CONSORTIUM ENERGY GROUP

*Come and have your say too!*

SOUTHWARK 'RIGHT TO FUEL' GROUP (701 0835)

Produced by Southwark Public Relations

Southwark

## Labour names its candidates in SE1

Labour Councillors Alan Davis and Geoff Williams will be standing again in next May's local elections in Cathedral Ward. Alan is a social worker in Islington and has represented Cathedral Ward for 8 years. Geoff is Chair of Southwark's Planning Committee and will be going for his second term of office.

In neighbouring Chaucer Ward Rita Sergeant, a resident of Tabard Estate and for many years active in community issues, will be standing for Labour in her first entrance into local politics. The other candidate for Labour is Linda Oram an officer with

the union NALGO.

In Bishops Ward, in Waterloo, there will be two new faces standing for Labour in the elections in May. They are Paul Wheeler & Joan Twelves. Kath Connelly, presently a councillor, will also stand again.

In the ILEA elections, which will take place at the same time as the local elections, Tony Ritchie, leader of Southwark Council and John Fowler, long-serving and hard-working councillor for Chaucer Ward, will be standing as candidates for Bermondsey for Labour.

## WAR AND WANT

At least no-one will ever accuse the Government of trying to conceal its commitment to inequality and unfair treatment of the needy and underprivileged. It is about to embark on a £20 million scheme of alterations and extensions to the Imperial War Museum on Lambeth Rd.

The Government has been able to get round the normal planning processes which apply to the public, and refused Southwark Council's request for a public inquiry into the proposal, which was determined by the Secretary of State by written representations. In plain English, this means that the public had far less opportunity to find out about it.

Meanwhile, Southwark remains one of the most deprived Boroughs in Inner London and the Government shows no sign of helping. Last year's Housing Investment Programme (HIP) allocation from central funds was a quarter of what the Council needed and asked for, and this year looks like being the same. At the same time the problems get worse by the day. There are over 13000 on the housing waiting list and the number of unfit dwellings in the borough needing substantial expenditure rose between 1981 to 1985 from 10752 to 14368 - an increase of 34%.

The Secretary of State apparently takes the view that the expenditure on the War Museum benefits the local community by attracting visitors with their associated spending power.

The people of Southwark don't want crumbs from the tables of the rich. The Government should wake up to the needs of the people and not add insult to injury with extravagant and wasteful schemes such as this.

## UPB supermarket

Flat Iron Square, Union St

TRY US

For food, drink,  
and household goods

The cheapest shop between  
Long Lane & Blackfriars Rd  
In a recent SE1 survey.

## SE1 PRODUCTION GROUP

Trisha Anderson,  
John Howes, Dave Scott,  
Chris Smith, Keib Thomas,  
Gerry Vignola, Paul Wheeler

Many thanks to Mary Dymond

## JUMBLE SALE



SATURDAY 22ND FEBRUARY, 86

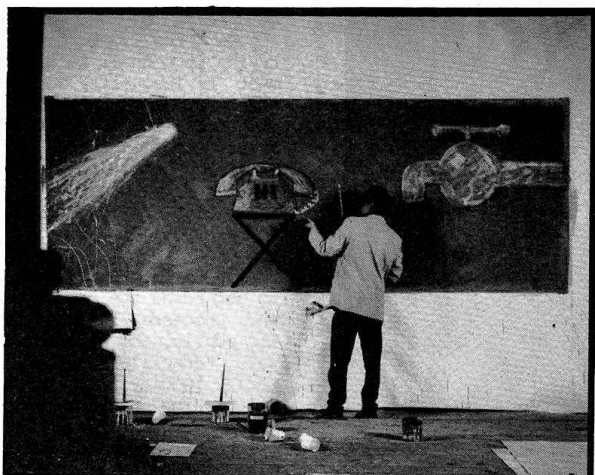
at 2pm  
at John Marshall Hall  
Christ Church,  
Blackfriars Road, SE1

Proceeds in aid of  
handicapped children

Plenty of bargains  
10p entry

BE EARLY

# HERCULES COMES TO COIN STREET



Hercules Fisherman - painter, sculptor, performance artist and teacher - has recently moved his studio to Coin Street. He has been working in churches for the past four years and his work has increasingly become gigantic in scale as a result. For this reason alone, he couldn't have found a better place than the large warehouse which recalls an old airplane hangar.

Part of March and April Hercules will spend at the De Fabrick studio, in Holland, to paint and exhibit. The project is funded by the British Council and is expected to bring a good response.

Welcome to Coin Street Hercules.



## TRAINING WORKSHOPS FOR SOUTHWARK COMMUNITY GROUPS

**Spring 1986**

Organized by the Training Sub-Group of Southwark Community Development Forum in conjunction with Southwark Community Development Section & Southwark Adult Education Institute.

Assessing Your Organization:	10 - 4pm	Mon 17th Feb
Basic Book-keeping:	7 - 9.30pm	Tue 11th & 18th Feb and Tue 25th Feb & 4th March
	OR	10 - 4pm
		Wed 26th Feb & 5th March
Design & Layout:		
Basic Course	7 - 9.30pm	Thurs 13th Feb Wed 12th March Tues 15th April
OR		
More Advanced Course	10 - 4pm	Wed 16th April
Making Meetings Work:	10 - 4pm	Tues 15th April
Single Worker Projects:	10 - 4pm	Mon 21st, Tues 22nd April and Tues 3rd June

All courses are free and held at centres in Southwark. For more details and a booking form contact Sue Bagwell 703 6311 ex 2260, or Room 206, Town Hall, Peckham Road, SE5 8UB

## THE GLC LORRY BAN What it means for Londoners

The GLC lorry ban comes into effect from midnight, 31st January 1986.

Basically, it means that goods vehicles over 16.5 tonnes will not be allowed into the Greater London area at night and at weekends, unless they keep to the Government's Trunk Roads or other routes excluded from the ban, have an exemption permit, police authorization, or are dealing with an emergency.



The actual times are 9pm to 7am at night, after 1pm on Saturdays, and all day Sundays.



The ban follows extensive investigations and consultations, taking into account the number of complaints about lorry noise, as well as the views of operators, trades unions, local authorities, and the police.



Operators who can show that they have a genuine need to use their vehicles at night and weekends will be able to apply for exemption from the ban, providing they undertake to reduce the impact of their vehicle noise. This could include training drivers to drive more quietly, maximising their use of the M25, or fitting 'hush kits' to make vehicles quieter.



Those lorries given an exemption permit will need to display special exemption plates. And operators and drivers who ignore the ban risk a fine of up to £400 for each offence.



None of this will adversely affect jobs in London, nor will it increase prices in the shops, or force operators to move out of London.



The first effect will be that all those lorries that use London as a short cut will have to stick to the M25 - this is half of all heavy lorry mileage at night and weekends.



It'll make London a quieter, cleaner, more pleasant place to live and work in.



The police will be primarily responsible for enforcing the ban, but the GLC will have staff available to monitor the ban, spot offenders or respond to complaints, and report them to the police.



You can play your part too. If you have any complaints about lorry nuisance or you think the ban is being disregarded after 31st January, or just want more information, let the GLC know on (01) 633 8886 Or write to Greater London Council TD/TP/POL/XP County Hall London SE1 7PB



**GLC**  
Working for London

Women could you use an extra **30** per week

Women are the invisible unemployed. In 1984 the Greater London Council estimated that there were 40,000 women in London looking for work who were not registered as unemployed. Unless women sign on, they are not counted in the official unemployment figures, and there are many reasons why they do not sign on. Women often think that if they are married or have children, they cannot sign on and get unemployment benefit. Also, the stigma and the unfriendly atmosphere in unemployment benefit offices can discourage women from signing-on.

The purpose of a Women's Signing-on Campaign is to inform women of their rights, to encourage women to claim them and to explain the workings of the benefit system.

If you think you might be entitled to sign-on, but want some advice, then contact the Womens Signing-on Campaign on 703 1062.

The Campaign also promotes other activities for women, such as photography and silk-screen printing and you can find out more about these activities on the telephone number above.

বাঙালানী মহিলা সমিতি

বাঙালানী ৫৭২ বোমবেই মদন  
বজ্রবেই মাছায়েই জন্য অ্যাটর্ন  
৯৬৯ মেটাবে ৯৬৯৯ ডিমেটি  
মহিলা (আমরা ছোট্ট) প্রতি  
(আমরা) প্রতিবেদন। আমরা  
যে কোন সময়ই আমরা  
যা আমরা ছোট্ট করা ২২৬।  
অন্তর আমরা প্রতি (আমরা)  
আমরা ২০টা ২২৬ ২২৬  
ডিউর দ্যা জিলা অ্যাটর্ন  
৯৬৯ মেটাবে আমরা