

# SE1

ISSUE 41

APRIL 1986

FREE COPY

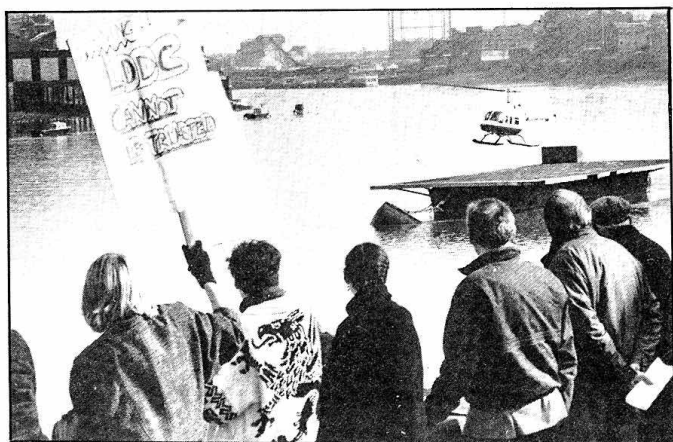


PHOTO: Vivienne Reiss

## Chambers Wharf Helicopter trials are a big bang

## Residents hand out a bumpy ride

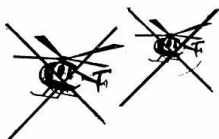
Angry residents braved bitterly cold March winds to come out and demonstrate against the proposed siting of a heliport at Chambers Wharf, in the heart of Bermondsey.

The focus of the demonstration was the decision by Star Aviation - the company controlled by beef baron Lord Vestey - to hold noise trials at Chambers Wharf to show that the helicopters would not create that much disturbance to local residents.

However, noise is only one part of the proposal that worries residents. There are further concerns about safety, traffic and general nuisance. Chambers Wharf, unlike the other London heliports at Battersea and Trig Lane, is right next to schools and homes.

Star flew in two different sized helicopters onto a temporary barge off the wharf. Noise measuring stations were placed at various

sensitive points to monitor exactly what level of noise the machines made. Initial results show that they were much noisier than Star said they would be which is good news for the objectors at the forthcoming inquiry into the proposal.



The inquiry begins on April 22 at the Rotherhithe Civic Centre SE16. The Centre has also been booked by the LDCC for an evening meeting of the inquiry on the April 30, although this is provisional as it is up to the inquiry inspector to fix the date on the first day of the inquiry.

For details, contact Maggie on 231-0916 or Simon on 928-0711.

## Street lighting in Bermondsey- What do you think?

## Are you afraid of the dark!

SE1 readers are being asked to cooperate in a survey of lighting conditions in North Southwark. On page 2 you will find a questionnaire which we would like you to fill in and return.

Please collaborate in the Bermondsey Lighting Campaign and make a brighter Bermondsey!

Many local residents think North Southwark could be better lit. They are also concerned at the number of lights which are out and the poor condition of many lamp posts.

Now, with the support of the North Southwark Community Development Group, a Campaign has been started to find out in detail what local people themselves believe are the defects of lighting in the north of the borough. The Bermondsey Lighting Campaign hopes to make lighting more of a priority area for the Council. It is undertaking a survey of local people and will present the results to Southwark's Public Services Committee.

The Council in fact has a ten-year plan to upgrade lighting throughout the borough and is committed to consulting the public. The Campaign will press to make sure consultation is taken seriously and that local residents' views are incorporated into the plan.

The Borough Lighting Engineer has met with Fiona Forbes and Christine Longbon who are carrying out the survey on behalf of the Campaign. They told SE1 that from this meeting "we discovered that the best way of getting improved lighting was the combination of sustained complaints from local people and the fact that the borough engineers

considered that the offending lamp post needed replacing anyway. Things to look out for then are cracks in concrete columns especially near the top where the arm meets the main column and rusting especially around the base of steel lamp posts."

Fiona and Christine can be contacted on 928 0711.

Complaints phone no  
**703 5464 ext 2330**

Southwark Council has now appointed a Complaints Officer who will deal with residents' complaints about its public services.

If you have a complaint about lighting, the number to ring is 703 5464 ext 2330.

## Please fill in the questionnaire

The survey on page 2 has been sent to many local residents through Tenants Associations, Mother & Toddlers Groups, Community Centres, Youth Clubs, Pensioners groups and individuals. The Campaign is now inviting SE1 readers to participate in the survey. Please fill it in and return it immediately to the address shown on the questionnaire.

The pressure of local residents will help to bring better lighting to Bermondsey and North Southwark.







## SOUTHWARK Women's Training Workshop

Women have you ever thought of learning Carpentry and Joinery?

You are very welcome to visit Southwark Women's Training Workshop's Open Afternoons on Thursday 17th April, 1986, from 2 - 4pm, at 164-184 Union Street, SE1, Second Floor.

Women only, children welcome, refreshments.

These are 6 month courses for women 18-58 years living in Southwark. Training and childcare allowances paid. There is special provision for teaching deaf women.

For further information, Tel: 261 0575



Community groups who fought hard for the development of homes and jobs on the Courages site next to Southwark Bridge Rd are angry and disgusted by the actions of the London Residuary Body (LRB) - the unelected organisation set up by the Tory Government to wind up the affairs of the GLC.

The site includes two industrial buildings, one on Park St with 24 small units and the other on Thrale St with 6 bigger units. It has always been the intention that these units should be managed under a policy which put the needs of local labour first.

The LRB however has different plans for the units on Thrale St and whilst it has agreed to a deal which allows Southwark to lease the smaller units, it is going to hang on the larger ones - presumably to sell them off for "high tech" office type uses which will bring little or no employment benefit for local people.

£2.3 million of public money was invested in these units, a decision taken by an elected body for a specific purpose - to develop an industrial strategy which could be developed and monitored by the local community

After March 31, the two years work in developing this strategy for the Courages site will be thrown on the scrapheap by the unaccountable LRB, whilst it pockets the profit from selling the building.

With the GLC gone, the carve-up is beginning. For community groups all over London the fight is on again.

### BISHOPS WARD LABOUR PARTY

#### TWO EVENTS

# 1

a Fun Event.....

Bands (Diving for Pearls.  
...Columbian Music)

Disco  
Food

SATURDAY 26 APRIL  
7.30 - 11.30 pm  
at

42 Braganza St SE17

E3 waged; £1.50 unwaged  
or in advance  
£2.50/£1

phone NOW for tickets  
928 - 8806

**DON'T MISS THIS**

Printed/published by  
G.Tucker, 1 Alverstone Hse  
SE11

# 2

on  
SATURDAY 19 APRIL 1986

at  
LAMBETH MISSION HALL  
LAMBETH RD SE11  
2pm - 5pm

Lots of bargains, clothes,  
bric a brac, books, plants,  
records, homemade cakes,  
bottle & stall  
refreshments

Call 928-8806 if you have  
jumble to donate/collect.

Printed/published by  
G.Tucker, 1 Alverstone Hse  
SE11

Rap against ratecapping

Jumble Sale

### BERMONDSEY VILLAGE HALL is running an EASTER PLAY SCHEME

from Mon April 7th to 11th  
for 5-11 year olds  
During the week there will  
be lots of exciting  
activities, including:  
Games, crafts sessions,  
swimming, cooking,  
nature trails, outings

The sessions will be in  
two parts:-  
Mornings - 10.30-12.30  
Afternoons - 1.30-3.30

The scheme will be free,  
but your child will need  
bus fares for the outings  
of 30 pence and 30 pence  
for swimming

Ring Grace on 403 3530  
for further information.  
All children aged 5-11  
years are welcome

### BERMONDSEY VILLAGE HALL is having a JUMBLE SALE

to raise funds for a new  
Under five's group

Saturday April 12th  
at 2.00pm

Lots of jumble & shows  
10 pence entrance  
Refreshments available

Bermondsey Village Hall  
Kirby Grove, SE1  
Tel: 403 3530

### A LITTLE BIT OF US

It twists  
It turns  
It kinks  
It's sometimes found in locks  
Or knots  
Can only be restrained by  
force  
And that's only our hair  
A very small part of us

by Paul Moore

### GREATER LONDON TRANSLATION UNIT

Confederation of Indian Organisations

PROVIDES A TRANSLATION SERVICE

IN THE FOLLOWING LANGUAGES

URDU CHINESE TURKISH

GUJARATI PUNJABI

GREEK ARABIC

SPANISH HINDI BENGALI

For further information  
PHONE

928 9889 or  
928 8108 extn 37

### Colombo Street Sports Centre ACTIVITIES

TUESDAY APRIL 8TH  
Swimming at the Shell Centre  
10am - 11.30am

Cinema - times to be arranged

Recreational Games  
6pm - 7.45pm

Girls Group  
7.30 - 9.30pm

WEDNESDAY APRIL 9TH  
Swimming at the Shell Centre  
10am - 11.30am

Badminton & Soft Tennis  
2pm - 4.30pm

Drama  
7.30pm - 9.00pm

THURSDAY APRIL 10TH  
Swimming at the Shell Centre  
10am - 11.30am

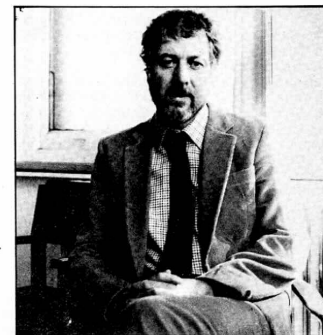
Junior Superstars - Hatfields  
2pm - 4pm

'Inters Club'  
7.30 - 9.30pm

Recreational Games  
6.30 - 8.00pm

FRIDAY APRIL 11TH  
Day trip - Venue to be  
announced (Inquire at  
reception for details, form  
to parents, etc, or ring 261  
1658).

## Councillor Geoff Williams talks to SE1



Geoff Williams has been Labour councillor for Cathedral Ward for four years. He has also been the Chair of the Southwark's Planning Committee during this period.

Geoff is standing for a further term of office in the local elections to be held 8th May. Here he speaks to SE1 newspaper about the work of the Planning Committee and the council.

SE1: Geoff can you tell us what you think are the main achievements of the Planning Committee over the last four years.

Geoff: We've produced the two District Plans that cover the whole of the borough, the Mid and South District Plan and the North Southwark Plan. These provide the context for deciding on planning applications both small and large and for major developments which are taking place. In the northern part of the borough I think there have been some outstanding successes. We've been able to bring about the Coin Street scheme which is for local authority housing and jobs and we're doing a similar scheme on the Courages site where housing and industrial units are already under construction.

We have also introduced an Environment Programme, so that together with local residents groups we've been able to bring back into community use a large number of sites. Some have been used for adventure playgrounds, or for gardens. This has seen the improvement of the Mint St Open Space and Grotto Place Playground. In Docklands we have negotiated a scheme with the LDDC for the rehab of Downtown estates. On Cherry Gardens, on the initiative of local residents, we concluded an agreement with the LDDC that one third of the site will be used for local authority housing.

SE1: What will be the affects of the North Southwark Plan being vetoed by the government?

Geoff: It could have quite a serious affect because one of the major platforms of the Plan was a very restrictive office policy. We will still use the Plan as a guideline. But if someone appeals to the Secretary of State against us, we don't have the same strength of argument. It puts us in a much weaker position to be able to control development and particularly offices which have had such an impact on the north of the borough.

SE1: How successful have you been in cutting back office developments since 1982.

Geoff: Very successful; we've only approved nominal amounts of office developments. We've been able to hold back the office speculators that ran riot in this part of the borough prior to 1982.

SE1: What affect has this had on the life of local residents?

Geoff: Well, by holding off the speculators who had begun buying up and assembling sites in the hope that they would make big profits, we have been able to preserve some local jobs. We have also been able to reduce commuter traffic coming into the area. Over the last four years we have been able to prepare the

ground for the Council's aspirations for better housing and better job opportunities if more money becomes available from central government. The major constraint on our housebuilding programmes has been the lack of money from central government.

SE1: Ratecapping has seriously affected the borough and also caused some divisions within the Labour Group. What will be the situation this year?

Geoff: Over the last several years the government has limited the amount of money that can be raised by rates to pay for the services that Southwark desperately

needs. It's coupled that with grant reductions to local authorities. That means the Council hasn't got the money it needs. Last year we deferred making a rate in the hope that the Secretary of State would see our need for more resources. The divisions were about for how long we should defer making a rate, about how far we should go. Eventually we made a rate at the end of May. This year we are ratecapped again and there will be no increase in rates.

However, we hope to have some growth in the budget. We want to preserve existing services and we are going to set up the machinery very early on to constantly make savings within the budget.

SE1: Will residents pay for this growth through higher charges for other services, like rents?

We won't be increasing rents at all this year. We've tried our best over the last four years to hold down rents.

SE1: Can you tell us a bit about what you and fellow councillor Alan Davis do in your work as councillors in the Ward.

Geoff: We try and attend Tenants Association meetings regularly where people can raise their queries, complaints and concerns about repairs, allocations, upkeep of the estate and so on. We take those up as far as we can. We also hold two surgeries a month where individuals can bring their problems to us.

We've also taken up the problem of pavement parking. The council now has a policy on this and we've argued for strong action to be taken. It's a particular problem of this part of the borough because of commuter and industrial traffic and because of the number of elderly. We have also argued that there should be greater provision of residents parking space around here. We want more residents parking bays and a 24-hour system. This takes a long time though to get on to the statute book.

We've also been able to bring back into use an open space in The Cut called Short Street. This was previously derelict. This should be open soon for permanent community use. Finally, we had the recent official opening of the Queenborough Community Centre on the Scovell Estate which is being run by a committee from five Tenants Associations.

### Mint Street Adventure Playground needs sports equipment

We are a voluntary run organization and we need the following equipment:

Elec cooker, table tennis table, roller skates, inflatables and any basic sports equipment  
New or second hand

If you can help ring:  
403 3747 or 928 6476

### The Goldsmiths Arms UNDER NEW MANAGEMENT

Elaine & Hartley  
welcome you

Open 7 days  
Mon-Sat: 11-3pm  
5.30-11pm  
Sun: 12-2pm, 7-10.30pm

Live music Thursday  
Darts Team  
new members welcome

The Goldsmiths Arms  
Sawyer Street, SE1  
Tel: 928 6743

### UPB supermarket



Flat Iron Square, Union St

TRY US

For food, drink,  
and household goods

The cheapest shop between  
Long Lane & Blackfriars Rd  
In a recent SE1 survey.

### have camera will travel

Are you a group of people  
doing, meeting and playing  
...on Friday evenings?

Have you thought about having  
your event, activity or  
action photographed?

We are a group of enthusiastic  
photographers based at  
Morley College. We want to  
use our cameras on you.

Contact us on 587 1826,  
Monday to Friday

## SE1 - BIRTHPLACE OF THE FIRST COMPUTER

A review of 'Ada', a new book by Dorothy Stein

Where do you think the first computer was built? The Far East? Japan? California's Silicon Valley? Well if you thought any of those places would be wrong. It was built in none other than in our own SE1 area!

The first computer was invented by Charles Babbage who was born in Walworth Rd in the eighteenth century. In the 18th and early 19th centuries, Lambeth was a renowned centre of engineering, housing many famous engineering firms and some of the world's best engineers. It was for this reason that Babbage chose Joseph Clement, an engineer from St Georges Rd SE1 to build his design with the aid of government grants.

This fascinating piece of local history and many more are revealed in 'Ada' a recently published book by

local resident, Dorothy Stein.

'Ada', also known as Lady Lovelace, was famous for a number of reasons, including being the poet Byron's daughter. Unusually for a woman in those days she was a keen scholar (particularly of maths and science) who tried to pursue her studies despite many obstacles. She has a reputation for being a female mathematical genius, and is even credited with having invented the first computer herself.

The truth behind the image, as revealed in Dorothy's book, is rather different from the myth. Dorothy outlines how Ada, a clever, radical woman, way ahead of her time in many ways, was used by Babbage to popularise his invention to secure more funding from government and investors for his 'analytical engine'.

As Byron's daughter and a rich socialite aristocrat she helped attract attention to his inventions. He used her genuine interest in science and mathematics and learning to publicise his own inventions. He even falsely gave her credit for his ideas to gain publicity and money.

The result is that Ada has now assumed an almost myth-

ical reputation as the inventor of computing, the world's first computer programmer (and a woman as well!).

On the face of it, this looks like a feminist achievement. But who is losing out in the current move towards automated technology? Largely women in clerical and secretarial employment who often lose their jobs as a result of office automation or end up doing boring, repetitive jobs.

In underdeveloped countries, where computer components are manufactured and assembled, thousands of non-unionised women labour for low wages, suffering extreme health risks working with dangerous substances and incurring near blindness through severe eye strain.

All this and local connections (Ada's best friend and confidante lived in Surrey Lodge ... it all happened in SE1!) plus many fascinating insights into nineteenth century society are revealed in Dorothy's well-researched and extremely readable book.

'Ada', by Dorothy Stein, published by MIT Press, at £17.50. Order it from your local library.



## DOOMPH!

THE BASIC RULES OF AMERICAN FOOTBALL

For those of you who are new to the game, this part is basically a good start in understanding what's going on. So here they are ... THE BASIC RULES OF AMERICAN FOOTBALL.

Let's start with the field of play...

THE AMERICAN FOOTBALL FIELD is 100 yards long, 53 yards wide and lined every 5 yards, the goalposts are set a further 10 yards back in the end zone. Each of the 28 NFL teams has 45 players, they are split into OFFENSE, DEFENSE and THE SPECIAL TEAM for kicking situations, but only 11 players are allowed on the field at any one time.

The aim of the game is as in rugby, is to score more points than the opposing team. The game is played in 4 15-minute quarters, but it is not continuous and normally, a game lasts 3½ hours, the way the game is played is as follows: One team has it's OFFENSE who are in possession of the ball.

Their opponents has in it's DEFENSE who try to stop the OFFENSE from scoring. The offense have 4 attempts or 'downs' to gain 10 yards, if they the 10 yards in 4 downs or less, they keep possession and have another 4 downs, if they don't gain the 10 yards required, they have 3 choices...

- To go for a field goal worth 3 points (if within kicking range.)
- To punt the ball deep into the opposition's half of the field as possible.
- To gain the yardage required, but risk losing possession, if they fail.

Finally, there are 4 ways of scoring in American Football.

- TOUCHDOWN - that when a player carries the ball into the opposition's end zone worth 6 points.
- EXTRA POINT - which is like a conversion in rugby, and is worth 1 point.
- FIELD GOAL - an attempt kick on 4th down between the opponents' goal and 40 yard lines, if successful is worth 3 points.
- SAFETY - To tackle your opponents with the ball inside their end zone, worth 2 points.

NEXT WEEK... THE PLAYING POSITIONS IN AMERICAN FOOTBALL.

## COIN STREET S.E.1

RIVERWALK BY CHRISTMAS . . .  
NEW PARK BY SUMMER '87 . . .  
HOUSING TO START THIS MONTH ?

In the past two weeks contracts have been let to complete the Coin Street riverside walk, and to lay out the new park which will link Stamford Street to the riverside. A third contract to build co-operative homes on the old Coin Street car park, was due to be let on 27 March but the Government failed to complete housing association paperwork in time. However, Environment Minister, Sir George Young has now personally promised to ensure that his civil servants cut through the red tape and deal with the 'section 29' application (submitted last September) within ten days!

The riverwalk contract is to complete the works already started to the west (by LWT) and to the east (by Kings Reach). It involves a two storey arcade through Stamford Wharf which will allow people to walk through without interruption along the riverside between Westminster and Blackfriars bridges. The walkway should be opened by Christmas this year.

The second contract is for the new park to the north and south of Upper Ground. The area to the south will be fenced and will include a special 'scented' garden. The area to the north will be planted with trees and shrubs but will not be fenced. The design was prepared by GLC Landscape Architects working with a group of local residents convened by Coin Street Community Builders. The two areas of the new park were to have been phased over two years but local GLC Councillor George Nicholson persuaded his colleagues to forward fund the whole park.

The housing contract for the first 56 homes was due to be let on 27 March, the last date on which the Building Contractor had promised to hold his prices within the cost guidelines set by the government. The civil servants processing the papers knew of the deadline and had assured the CSCB co-op that they would deal with the application in time. The paperwork is normally completed within six weeks of the application. 36 hours before the deadline a senior civil servant suddenly announced that the matter could not be dealt with by Easter and that he could give no timetable for the completion of the red tape.

The CSCB co-op immediately delivered a letter to DoF Minister Sir George Young asking him to intervene. After a series of phone calls with our local MP Stuart Holland, the Minister announced that he had told his civil servants to deal with the application within ten days. The Contractor then agreed with the co-op to hold his prices.



Two other contracts recently let by Coin Street Community Builders are for temporary weatherproofing of Stamford wharf and its Oxo tower, and for a new fence round the Doon Street car park.

Visitors to the Coin Street Community Builders' Design Centre (99 Upper Ground behind the National Theatre) are welcome during normal office hours and can see an exhibition which includes the designs for the riverwalk, park, and new homes.

## BERMONDSEY VILLAGE HALL

ALREADY WE HAVE

MONDAYS:	Bingo	1.30 - 3.00pm
	Children's Club for 5-11 years (10p)	3.00 - 6.00pm
TUESDAYS:	Free at the moment	
WEDNESDAYS:	Keep Fit	7.00 - 9.00pm
THURSDAYS:	Under fives group	1.30 - 4.00pm
	Childrens Dance Classes start 17th April	4.00 - 6.00pm
	Self-defence class starts 1st May	7.00 - 9.00pm
FRIDAYS:	Senior citizens pop-in	1.30 - 4.00pm
	Bingo	7.00 - 9.00pm

We'd like to arrange some new activities for you, but we can't do this without your support. Tell us what you want and we'll try to provide it.

NEW ACTIVITIES PROPOSED ARE

Culture club, Lunch club, Unemployed session, Youth Project, Single club, Local History group. Watch out for future advice sessions.

Our hall is available for weddings, parties, and other functions to hire at reasonable prices. Ring 403 3530 for details



EASTER PLAY SCHEME

GIRLS OVER 10 YEARS AND YOUNG WOMEN

DJ WORKSHOP

April 7th, 8th, 9th, 10th  
1.30pm - 5.30pm

Cooking/Dance  
Weight-lifting (over 14's)  
Photography  
Carpentry  
Video  
Beautician

Telephone: 261 1658

**TOGA PARTY** Friday 18th April

at the BOROUGH COMMUNITY CENTRE

Price includes: running buffer\* disco music\* licensed bar\*

All proceeds go to the Mint Street Adventure Playground and the Borough Community Centre

56, Southwark Bridge Road, S.E.1

## BERNIE SPAIN FAMILY CENTRE CAMPBELL BUILDINGS

The building of the family centre has begun and should be ready for use a year from now. Since Lambeth Council were keen to see the family centre not only for use by social services but as a community resource, AWG has been consulting over the last few years with the community about the kind of facility local people would like to see.

A survey was carried out recently finding out the views of parents with children under five; several meetings have been held and a lot of discussions have taken place over the referral system for the nursery, staffing, management committee, access to the centre and the kind of activities people would like to see take place.

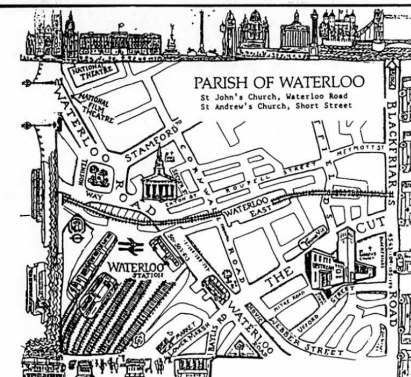
The steering group are now in the process of drawing up a report making specific recommendations to the council about how the centre should be run. Negotiations with the council will soon begin. The main suggestion is that at least half the nursery places should come via a waiting list and should be quite

separate from the priority places.

We are also insisting that the centre has the kind of access that will enable its use by other community groups in the evenings and at weekends. In consultation with the different minority groups in the area we are putting forward a programme of activities which have been suggested. Some of these include a creche/parents drop-in; a latchkey scheme; a childminder resource; an employment and health advice service; mixed parentage, special needs, pensioners and womens therapy groups.

The next steering group meeting is on Tues. 15 April 1.30 pm at Waterloo Action Centre.

These meetings are open to all members of the community. We would be pleased to see you there.



THE PARISH OF WATERLOO is the Church of England in the Waterloo area. All are welcome to any of our activities. Parish Office tel: 633 9819.

**LABOUR**  
working for you locally...

TERRY RICH & KATHY CONNELLY  
your LABOUR councillors  
on Lambeth council

**Surgery**  
EVERY THURSDAY EVENING 6.45-7.30  
at China Walk Tenants Hall,  
Lambeth Walk, SE1

**TAE KWON-DO**  
KOREAN ART OF SELF DEFENCE

Classes held at:-  
The Lambeth Mission Hall,  
Lambeth Road, SE1  
Tuesdays & Thursdays, 8-9pm

Under the instruction of  
Mr De Silva (4th Dan) UKTA  
Ring 928 6344 for details



## FLATS FOR RETIRED PEOPLE

Vacancies occur from time to time in an attractive sheltered housing scheme in West Norwood for retired people who live in the North Southwark area of the Borough.

St. Saviour's College in Hamilton Road, West Norwood is administered by the Corporation of Wardens of the Parish of St. Saviour and preference is given to residents of the old St. Saviour's parish - an area which centres now on Southwark Cathedral and adjoining districts.

To be eligible, would-be residents should have lived in the area between Blackfriars Road leading down Kennington Park Road and Borough High Street leading down Great Dover St and part of Old Kent Rd, as far down as Albany Rd, SE1.

A residential qualification of three years is required; people should be of limited means, of good health and be able to look after themselves.

Residents live rent-free, pay no rates, and are provided with central heating and hot water at no charge, though they must pay for any extra heating.

The College is a sheltered housing scheme, consisting of 63 flats for both married couples and single persons, built in four two-storey blocks and arranged around a large garden. There is a common room and a fully-equipped laundry, and a Superintendent and other assistant staff are in residence.

If you would like more information about applying for a flat or you know of someone who might be eligible and you would like to put them in touch, please contact:

The Clerk to the Wardens  
8 Southwark Street  
London SE1 1TL  
Telephone - 407 5961

*The Corporation of Wardens  
of the Parish of St. Saviour, Southwark*

## LEATHERMARKET COMMUNITY PARK

North Southwark has a new park, Leathermarket Community Park. It's the land surrounding Bermondsey Village Hall, less than 5 minutes walk from Guy's Hospital. The main entrance is off Kirby Grove. It is one of a new wave of inner city wildlife areas that are springing up all over London.

There is already a large bird population, including visiting flocks of pigeons and starlings, overwintering blackbirds, dunlocks, sparrows, blue tits and robins. With the right treatment it could develop into a rich green pocket with a whole range of native plants and animals.

Many people still remember the site as a tannery. As the leather industry declined and moved out of Bermondsey it became a wasteland plot. Rubbish was dumped there and butterfly bush grew rapidly over most of the site.

Plans for developing the area as an urban nature park began over four years ago. Southwark council produced a basic landscape scheme with a path through the site, wood climbing frames for older children, benches and a picnic table.

When I started work as warden last September, buddleia had overgrown large areas of the site. These were fun for children to make dens in, but also attracted dumped rubbish and stolen handbags. Over the autumn and winter we've made a start on clearing the buddleia, planting more trees and planning how to manage the site so that its two natural corners survive as mainly wildlife areas set behind meadow-like mounds, while the other parts would be more like a conventional park.

Some of the new plants are growing well, especially an area of mixed trees - the eucalyptus, white poplar, hazel, willow and alder in the corner near Tyers Gate.

### Volunteers needed

If the park is to work, we need volunteers to come out and rake, dig, plant, move earth, pile stones. This may sound like hard work, but as anyone who's been out with us will tell you, there's nothing more invigorating and relaxing than an hour or two working in the open air with robins hopping about and grasshoppers singing.

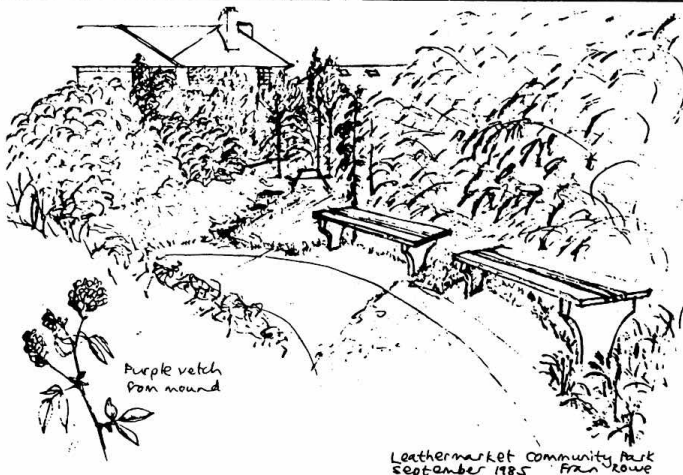
## Buzz off BRAG

SE1's recent article on the dubious activities of the Baylis Road Action Group has certainly struck home. No sooner had we questioned the motives of this so-called 'community group' and the racist and personal attacks contained in their newsletter than yet another leaflet appears attacking SE1 Newspaper.

It's a great shame that this small group of troublemakers cannot desist from peddling their badly written literature in some parts of Waterloo. However, if they are determined to carry on with their John Bull printing kit perhaps they might like to explain why they opposed the building of family housing on the Brooke Bond site at a recent public inquiry. Or how their headquarters is also the home address of John Wright, the candidate of the National Front at the recent GLC by-election and at the parliamentary elections of 1983.

The sudden appearance of this "community group" and its supposed interest in the affairs of Waterloo is not a coincidence. It has to do with the local council elections in May. It should come as no surprise then to see the BRAG "organizers" appear as the National Front candidates in these elections.

SE1 Newspaper has been in existence for over ten years. We will still be reporting the real news and events in Waterloo and North Southwark of interest to local residents long after BRAG has disappeared.



We have a basic supply of tools and any day now, the first batch of trees and shrubs from a Southwark Environment Trust Grant will arrive to start filling some of the bare spaces and make the park a more interesting place.

If you'd like to get involv-

## SE1 Newspaper

SE1 Newspaper is produced for residents of Waterloo and Nth Southwark by people living & working locally. We welcome your letters, news, photos or other contributions. SE1 particularly welcomes stories which reflect the multiracial and multi-cultural character of our area.

### NEXT COPY DATE

Copy date for the next issue of SE1 is Wed 23rd April. All contributions should be sent to 12 Meymott St, SE1.

### SE1 AVAILABLE AT

If you want to receive your copy of SE1 regularly, it is available from the Waterloo Action Centre, 14 Baylis Rd, or from the Borough Community Centre, 56 Southwark Bridge Road.

### ADVERTISING IN SE1

SE1 Newspaper is run on a tight budget and largely financed by advertisements. If you would like to advertise your activities, events, jumble sales, products, services or whatever, you will find our rates very reasonable. To find out more about advertising in SE1 Newspaper, ring Gerry on 928 0711.

### SUBSCRIPTIONS

Subscriber rates to SE1 Newspaper are £5 a year for individuals and £15 for institutions. Cheques should be made payable to SE1 Newspaper and sent to 12 Meymott St, SE1.

### SE1 EDITORIAL GROUP

Trisha Anderson,  
Mary Dymmond, John Howes,  
Dave Scott, Chris Smith,  
Keib Thomas, G Vignola,  
Paul Wheeler

ed, come along to the Village Hall or give me a ring on 403 3536. We'll be holding a open meeting soon after Easter, so watch out for details, either in the next issue of SE1, local shops or on the Village Hall door. I look forward to hearing from you.

Frances Rowe, Warden,  
Leathermarket Community Park