

SE1

ISSUE 42

MAY 1986

FREE COPY

Channel Tunnel Terminal— Waterloo objects!

If the Government and British Rail succeed in making Waterloo Station the London Terminal for all Channel Tunnel passengers Waterloo will get each year:

- 10,000,000 extra rail passengers; (43,000 a day at present)
- 4,500,000 more underground users; (18,500 a day)
- 1,000,000 extra taxis; (4,300 a day)
- 500,000 extra private cars; (2,150 a day)
- 35,000 extra coaches. (150 a day)

Waterloo's problems are bad enough now, but they are nothing compared with what the Terminal would bring:

- massive illegal parking problems;
- congested and dangerous roads;
- big hotels and bed & breakfast conversions;
- even more office blocks;
- loss of community facilities;
- loss of our few useful shops;
- noise throughout the night;
- loudspeaker noise;
- loss of industrial jobs;
- even more litter;

The Government's ruthless plans involve demolishing whole villages in Kent, so we should expect the worse here.

Don't wait for it to happen - Object now!

Write to: **David Mitchell MP**
Minister for Transport
House of Commons SW1

William Waldegrave MP
Minister for Environment
House of Commons SW1

Tell them that we don't want the Terminal at Waterloo. Time is short so write now.

INSIDE.....

•estate news

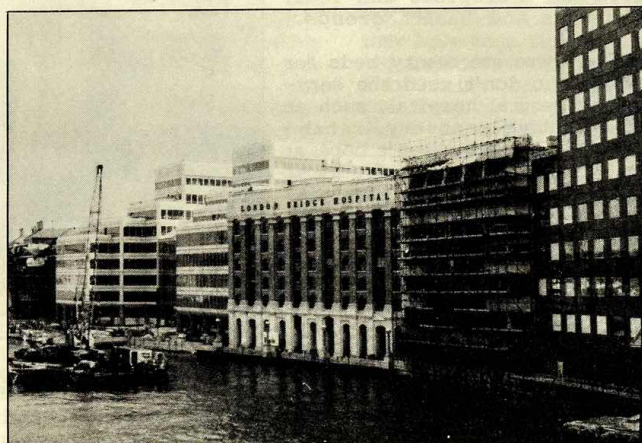
•street lighting

•manna centre

•community education

SE1

THEIR HEALTH AND OURS



New private hospital opens opposite Guy's at £350 a night

With the closure of New Cross Hospital in Lewisham just around the corner, which will affect North Southwark residents, the newly built private London Bridge Hospital, financed and owned by the Kuwait government, has recently opened.

Built at a cost of £21 million, the price of a small public general hospital, it is a 119 bed acute surgical unit with the latest in medical technology catering only for private patients. At prices from £145 a night for a shared room to £350 for a suite overlooking the river, not many local residents will get a look in.

Local opposition

The new hospital was formerly Chamberlains Wharf, a butter and cheese storage warehouse. When the developers applied for permission in 1978 to transform it into private hospital, their proposal met strong opposition from local community groups, residents and the Health Trade Unions. Southwark Council refused planning permission, but when the Tories came to power in 1979 the Secretary of State reversed this decision.

A number of consultants at Guy's Hospital were behind the idea for the hospital in the mid-1970's and are already at work there. Yet while

private medicine flourishes on the banks of the Thames using the facilities of the National Health Service and consultants trained at public expense, over the road Guy's Hospital has been facing severe hardship for the past few years.

A catalogue of cuts

Over 200 hospital beds have been cut at Guy's since 1984; outpatients waiting lists are long and growing; patients wanting non-emergency surgery can wait for up to a year; many patients are turned away from the hospital on arrival on the day of their operations because there is no bed for them; there are many complaints that patients are discharged too early; many staff who leave are not replaced and the Health Authority has been ordered by the government to make even more cuts in its budget. St. Thomas's in Lambeth will be closing down for the whole of August except for emergency cases.

Lil Patrick, local resident and long time health campaigner told SE1 "it was immoral that the decision to allow the private hospital to be built was taken the same week as the decision to permanently close St. Olave's Hospital. Since then more cuts have been made and now they intend to close New Cross. If you can pay £200 a night you can afford to be ill, but if not, sorry but there's no room for you."

Lambeth Community Care Centre

On the site of the former Lambeth Hospital, in Brook Drive SE11, now stands the Lambeth Community Care Centre. Purpose designed and built, the Centre was opened in July 1985. It provides a variety of health services for the residents of Lambeth and Southwark.



The Centre intends to provide a new type of care and rehabilitation for local patients which more approximates a home than a traditional hospital. It also aims to integrate the caring services in the local community such as GP's, community nurses and therapists and local volunteers and health groups.

Upstairs, there are twenty beds for patients who don't need the services of a general hospital, such as post-operative recovery, rehabilitation, people who can't cope at home. The average length of stay is four weeks. The rooms are very comfortable, light and airy with doors leading to a balcony overlooking a garden. Many patients are astonished by the comfort and excellent facilities offered.



Downstairs, there is a day unit for up to 35 people who arrive by ambulance for treatment or perhaps simply to give their families a break. Outpatients are also treated at the Centre, where there are occupational therapists, physiotherapists, speech therapists, chiropodists, dentists and social workers. In all cases, patients must be referred there by a GP who is contracted to the centre.

At the end of the day, after the medical services, the building is available for use by Tenants Associations, local community groups, etc for meetings, jumble sales, and so on. The intention is to integrate the Centre into the local community not simply by providing much needed primary services but also by offering the building's excellent facilities to residents.

Anyone interested in the Centre can contact Leslie Nixon, the Centre's Community Worker, by phone on 582 5513.

BOROUGH COMMUNITY CENTRE

Myself Anike Faturoti and Debbie Kirk both attend St Saviours and St Olaves School, New Kent Road, SE1. At present we are in the lower sixth form. In the first year of the sixth form, all girls go for two weeks to offices, hospitals, etc., normally in the area of their chosen career.

Debbie and I both chose community work because our jobs involve people. Debbie wants to join the police and I want to be a journalist.

Whilst at the Borough Community Centre we attended a meeting of the North Southwark Pensioners Action Group. They are concerned with problems like housing difficulties. One estate the group is concerned with is Redmond House where many pensioners live. There, they are concerned with the windows which they find hard to open and clean. Other problems affecting the Group are street lighting, pavement parking, rubbish dumping and broken paving stones.



Other groups participating in the Centre are aerobics, arts & crafts, welfare rights, photography, bingo, mothers & toddlers and a pensioners pop-in. The Centre also organises fund raising events like parties, raffles, jumble sales, etc.

During our time at the Centre we also helped in the office by answering the telephone, taking messages, socialising with the public and working on the newsletter for which we designed material to remind people of the Toga Party in April and a Jumble Sale in May to encourage people to become part of the Centre.

Both Debbie and I found our fortnight at the Community Centre very enjoyable indeed and we discovered what community work really involves. We are very grateful to Linda and Shirley for all the help they gave us and for making us feel welcome.

Anike Faturoti
Debbie Kirk

Borough Youth Club
Three part-time youth workers with experience (one to be Leader) required to re-open local youth club in Borough, SE1, Tuesdays and Thursdays, 7 - 9.30pm.

Club wants to appoint a mixed gender team, with skills in arts & crafts, sports and discussion groups.

For further details ring 701 8559. Closing date 30th May

MANNA CENTRE

The Manna Centre in Bermondsey was founded in October 1982 by Nanette Ffrench. It is a centre which provides sustenance for those who are down on their luck and whom society frequently shuns. It is partly funded by the Catholic Diocese of Southwark and also receives voluntary donations. There are three paid workers whose wages are at the same level of supplementary benefit. There are also many voluntary helpers, all christians.



Mainly men attend the Centre and a quarter of these come from Tooley Hostel for men as they have no day facilities. The average age of the men is around 35 - 40, although some are as young as 20 and as old as 60. Even though many of the men are alcoholics there are strict signs in the Centre forbidding alcohol on the premises.

The Centre is open Monday - Thursday 10am - 2pm and Sunday 12 noon - 2pm. There the men can have a nourishing soup at midday along with tea and sandwiches. At least 150 men use the Centre daily. Each person is also able to use the washing facilities with soap, towels and razors provided. Clean clothes are also available many of which are donated.

Every evening a group of workers and volunteers takes a crate of sandwiches and an urn of tea to the railway arches on Druid Street for the Manna Centre Tea Run for homeless men and about 70 people use the run.

Four days a week a nurse runs a surgery where the men can be treated for their cuts & bruises. If they are very ill they are referred to a hospital. A qualified social worker from St Giles Centre attends the Centre one morning a week to talk to people about problems like housing.

The main aim of the Centre is to accept each individual as they are. The men are not treated as tramps or alcoholics but as themselves and as equals. The most important point of all is that there is a great atmosphere of peace and friendship and each man becomes more fully aware of his own worth and potential.



For more information about the Centre or if you would like to donate clothing or anything else, ring Nanette or Patrick on 403 1931.

by Anike Faturoti

South London Art Gallery

SOUTH OF THE RIVER

When Lou Shepperd gingerly went along to her first evening at Blackfriars Photography Project, she could hardly have guessed that she would have her work in a major photographic exhibition.

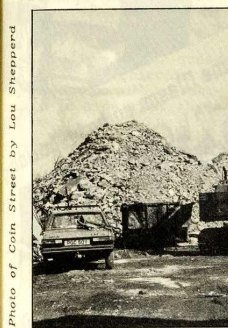


Photo of Coin Street by Lou Shepperd

Lou, active for years in various campaigns around Waterloo, is trying to slow down a bit. Now we discover she has been putting together in words and pictures the story of her own life and of her remarkable mother and grandmother.

Her exhibit spans the depression and war years through to the present day problems facing Waterloo residents. It is a very moving story, without being sentimental.

Don't miss the South of the River photographic exhibition, at the South London Art Gallery, next to the Town Hall in Peckham Road, SE5. It's on until 18th May and is open Tuesday - Saturday 10am - 6pm and Sunday 3pm - 6pm.

Rockingham Community Park opened



The Rockingham Community Park in Falmouth Road, SE1, was opened at the end of April in a ceremony attended by the Mayor Cllr Pat Sullivan and Councillor Anne Matthews.

The park was designed by Southwark planning department. It has toddlers play equipment and a small paddling pool. It will be looked after by members of the Rockingham Estate Play Association, Rockingham TA, and Rachael Macmillan College.

The land was formerly derelict and was squatted back in 1971 by Anne Keane and members of the Rockingham Estate Play Association for use as a playground. In 1976 it was funded by Southwark Council as an adventure playground.

The opening was organised by Debbie Murphy who works for REPA as a coordinator. For opening times and any further information about the park, contact Debbie on 403 6627.

NEW MINIBUS

The group which runs the minibus in Waterloo were one of the groups to benefit from the GLC's last minute spend. This covered most of the cost for a new 12-seater.

Association of Waterloo Groups can book the bus as usual through the Action Centre.



TENANTS ASSOCIATION

NEWS

WINDMILL TA

"The central heating will be done eventually." That's the latest and not very promising word from Lambeth Council. The tenants had hoped to get the work done by the GLC before abolition, using money originally earmarked for Mathieson Lang House. But as with so many other schemes in the final rush, the GLC didn't get the job out to the contractor on time.

STAMFORD/AQUINAS/CLIMSLAND TA

The Committee has recently completed a survey of the flats in Stamford Street - and pretty horrifying reading it makes too! They've met with Malcolm McBride - the District maintenance manager - to find out who is responsible for what and they'll be tracking down the officers concerned over the next few weeks.

Last August many Stamford St tenants applied for a reduction in rates because of the Coin St demolition. After TA pressure they are finally going to look into the claim. However, don't spend tour money yet as the biggest reduction given in the past for similar nuisance was 10%!

CLIMSLAND IN THE DARK

Tenants of Climsland House were very much in the dark following the abolition of the GLC who used to own the block. The London Residuary Body has temporarily taken charge. Taken charge that is of collecting the rents. But when lights went out all over the stairs and landings a few days after they took over they weren't so quick to carry out repairs. Lighting apart, the tenants are in the dark about their future.

TAMSWELL ESTATE

As environmental improvements near completion, the TA recently held a meeting to allocate parking spaces. Not surprisingly, it was well attended! The tenants have also persuaded Lambeth to make their estate the next on the list for the controlled parking scheme.

The TA is still negotiating compensation for the chaos they have been living in during improvements. The TA is also turning its attention to the forty or so flats which didn't get modernised at the time of the improvements.

PEABODY TA

As well as supporting the protest against the Channel Tunnel Terminal at Waterloo Station and lending its name to a class action against Lambeth Council for delayed and non-payment of Housing Payment, the TA is currently engaged in its perennial battle with the Peabody Trust about providing doors and entry-phones on the estates.

Tha TA has a meeting with the Trust on 1st May, but it has learnt with dismay that £6 million has been spent purchasing flats in Wandsworth. This is particularly galling as we are always told that there is no money for improvements.

dismay that over £6 million was spent on purchasing on flats in Wandsworth. This is particularly galling as we have been told in the past that no money was available for improvements.

£750,000 AVAILABLE INTERESTED?

TAs or other interested community groups with an idea to improve the environment in their area can look for help to Lambeth's Inner City Partnership Scheme.

There is about £750,000 each year for environmental improvements - which can be anything from building a playground on a corner of unused ground, to tidying up walls and pavements, to creating a community garden!

For more information, contact Wendy Hislop on 674 9844 ext 410 or Dave Scott at Waterloo Action Centre.



ADULT EDUCATION SHAKE - UP IN SE1/SE11.

New opportunities for you now at Morley and its local branches

Major changes in the organization of adult education in Nth Lambeth and Nth Southwark will mean greater opportunities for local residents. A Community Education Forum has been established to overview the work of Morley College and its associated branches.

The Forum will look at all the courses and resources currently available, will try to identify the areas where local residents want tutors or resources made available, and will try to ensure that more local people know about the fun, friendships and skills that can be gained from taking part in courses and events at these centres.

The Forum will also be able to steer resources to local groups and local community centres, such as the former Community Education Project did. In the past year, CEP secured funding for courses and a big variety of one-off events at Borough Community centre, the 259 Project, North Lambeth Day Centre, Barley Mow, Colombo Street Sports centre and many others. Creche workers have supported classes where needed.

The new Forum will continue to guide the allocation of the limited resources available to the old CEP but, in addition, will also be looking at the work of all the adult education branches in Nth Lambeth & Nth Southwark.

Any local resident or local community group in can apply for membership of the Forum by writing to:
The Community Education Forum c/o Morley College
61 Westminster Bridge Rd SE1 or telephone 928 8501 and ask for the Forum. You can then take part in policy meetings and can be elected to the Committee.

Finally, the old Principal of Morley, Barry Till, is leaving. Sue Fey, who is taking over in September, says that doing more for the local community is a top priority.

Women's Day

Saturday 17th May 1986
10-4.30

Crèche

Advice on Education, Law, Health, Work opportunities, Skills training

Maxine Mason on body-building

Lesbian issues

Morley College
61 Westminster Bridge Rd. London SE1
(opposite Lambeth North tube station)

Fantasy Journey

Bookstall

Video

CARD GAMES & FRIENDS

Leathermarket Community Park

OPEN MEETING

Tues 13th May
12 noon at
Bermondsey Village Hall
Kirby Grove, SE1

To discuss:
- whether dogs should use the park;
- what would people like to see in the park;
- help plant trees;
- help participate in running the park

The park is for local residents
Why don't you come?

UNEMPLOYMENT UP!

Male unemployment in Southwark in February of this year reached 25%, according to a quarterly report on unemployment by Southwark Council's Development department.

In Bermondsey the figure was 27.9%, more than double the Greater London average figure. When the unemployment figures are broken down by electoral wards, the real drama of unemployment in North Southwark is evident.

In Chaucer Ward, male unemployment is over 35% while in Abbey and Riverside wards the figure is around 30%. In Cath-

edral and Abbey wards, nearly 40% of all young people are without jobs.

The true unemployment figures are much higher. By only counting those who receive benefit rather than those who are registered as unemployed, the government artificially reduced those counted as unemployed by 16%. The government's method of counting the unemployed discriminates above all against women. Many women don't register because they think they are not entitled to and would work if it was available.

FEELING UNSAFE?

Many people now feel a sense of threat in Waterloo, not only on the streets at night but - for some at least - in their homes as well.

Common (and women) working in pairs and robbing old people in broad daylight; flats burgled; street muggings; racist attacks on black and asian families - all are on the increase. Or at least so it seems to local residents.

The police response has been to encourage tenants associations and other groups to set up "neighbourhood watch" schemes. But do they work? Do they help prevent the sort of crimes that people fear? Or do they simply direct attention away from the police failure to stem the tide?

These are some of the questions the Association of Waterloo Groups will be setting out to answer at their next meeting. Chief Super Don

Edwardson will be there from Kennington police, along with speakers who have done research into neighbourhood watch schemes.

An engineer from Lambeth in charge of street lighting will also be there and the meeting will look at whether street lighting in Waterloo is good enough and whether repairs are carried out fast enough.

If you know of a street in Waterloo which you think isn't bright enough to allow people to feel safe at night, fill in the coupon below and return it to Waterloo Action Centre.

Next AWG meeting to discuss these issues is:
Tues 27th May, 7.30pm
Waterloo Action Centre
14 Baylis Road
Don't miss it!

Streetlighting questionnaire

I feel that street lighting is not good enough on:

.....(name of street or estate)

- because:
- the lights aren't bright enough ☐
 - the lights are too far apart ☐
 - the lights are often not working ☐
 - repairs are done too slowly ☐

Return to Waterloo Action Centre, 14 Baylis Road, SE1

THE LONDON

THE GOLDEN PLOT

WHO?

You .. whoever you are!
All over London, people with no experience of theatre worked with Bubble to create their own events.

WHAT?

A Festival Sunday, with live music, performances, buskers, stalls, food and drink.... possibly the biggest sideshow in the world

WHERE?

Spa Gardens, Spa Road, Bermondsey SE16

WHEN?

Right now, building up to a Grand Finale on Saturday 5th July

HOW?

Between now and July, join one of the teams that will make it happen.

Saturday July 5th

BUBBLE

WHO DESIGNS IT?

WHO MAKES IT?

A chance to learn theatre skills in prop making, stage building, costume making, puppets, painting, design and much more.

Anyone can join the Golden Plot design team, helping to create a spectacular Summer Festival taking place in Spa Gardens in July

No experience necessary

Spa Gardens, Spa Road, Bermondsey SE16

FREE 'TASTER' SESSION

St James' Church Hall
11.00am Thurs May 8th
Crèche available

For more information, call
Mary O'Malley, Ralph Lister
or Rob Lutton at Bubble
on 237 4434

Marathon Man



Mr Harold Gregory, for 31 years Deputy Head of Johanna primary in Lower Marsh, Waterloo, was one of those who completed the 26 miles of the London Marathon at the end of April.

Mr Gregory, who was born in 1912, returned to the school to tell the pupils that the run was a great experience. He started in the rain at 9.30am and finished as Big Ben struck 3 o'clock in the afternoon.

Mr Gregory took part in the marathon to raise funds for the school, in order to extend the children's nature garden and to help decorate the entrance lobby. So far £190 has come in. If you want to make a donation contact Mr Hobbs, the School secretary, on 928 5814, or pop in to the school.

Look in for help about tranquilisers



There has been a lot of publicity recently on TV and in magazines about tranquilisers and tranquiliser dependency.

If you are worried or distressed by the effects you are having from taking these drugs then perhaps you would feel better by talking to other people about it. Worrying on your own can be very lonely; it can be difficult to reduce your dependency on your own.

Two counsellors from Waterloo Community Counselling Project are starting a group for people taking tranquilisers; meeting weekly at Barley Mow Health Clinic, Frazier Street, SE1.

on Tuesdays from 1-3 o'clock starting Tuesday 22nd April 1986.

There will be someone to look after your children and there will be tea, coffee and refreshments.

If you want to chat to someone about it beforehand please ring Sue on 928-5921 on Tuesdays or Thursdays.

This is a group for people who are thinking of reducing or coming off tranquilisers and would like support in order -
- understand what's happening to them
- to learn to relax
- to cope with everyday
- to deal with strange fears and panics
- to deal with withdrawal symptoms
- to find alternative ways of dealing with stress and anxiety
- to share with others
- to stick with it!

MORLEY

OPEN DAY AND OPEN WEEK

OPEN DAY is on Saturday, 21st June, 1986, from 2pm to 7pm.

There will be displays, exhibitions, demonstrations and an opportunity to see every facet of the College's activities. It is followed by OPEN WEEK, beginning Monday 23rd June, which offers an opportunity for anyone to sample classes, free of charge.

WHEN TO ENROL FOR 1986/87

Enrolment week : 15-18 SEPTEMBER, 1986.

There is a special priority enrolment for people living in SE1 or SE11, as well as for our current students, from 23-27 June, 12-17.

01-928 8501



TRAINING COURSES FOR SOUTHWARK COMMUNITY GROUPS SUMMER 1986

BASIC BOOK-KEEPING	3 day course 10am-4pm	Tues 27th May, 3rd & 10th June Borough Community Centre 56 Southwark Bridge Rd
BUDGETING	1 day course 10am-4pm	Tues 17th June Borough Community Centre
P.A.Y.E. & V.A.T.	1 day course 10am-4pm	Tues 24th June Borough Community Centre
DISABILITY AWARENESS	1 day course	Fri 23rd May Nunhead Centre Southwark Institute Whorlton Rd, SE15 Ring Veronica Ward at SCVS 732 3731 for more details
HOW WE USE OUR TIME	1 day course 10.30am-3.30pm	Thurs 26th June Willowbrook Urban Studies Centre 48 Willowbrook Rd, SE15
UNEMPLOYMENT & COMMUNITY WORK	1 day course 9.30am-4.30pm	Fri 6th June Tabard Centre Southwark Institute Hunter Close, SE1

All courses are free and are open to workers or members of management committees. A creche will be provided alongside each course if needed.

For further details and a booking form please contact Sue Bagwell 703 6311 ex 2260.

Room 206, The Town Hall, Peckham Road, SE5

JUMBLE SALE

toys

refreshments

tombola raffles

books

bric-a-brac

Come to our Jumble Sale

Saturday 10th May

11am till 2pm

Admission 10 pence

Everybody welcome

Borough Community Centre
56 Southwark Bridge Road
London SE1
Tel: 928 6476

Bermondsey Street lighting

SE1 readers will be pleased to hear that we have had a good response to our questionnaire.

Bermondsey Lighting Campaign has also started up a lighting watch. On our first check in Borough and Bermondsey we found a total of 90 street

lights not working! We reported these to the complaints officer which you can reach on 703 5464 ext 2330.

Before government cuts in local authority expenditure, there used to be a weekly night patrol to check for lights out, but there hasn't been such a patrol for over two years now. This means that local residents should make sure they report street lights which are not working. This can be done by ringing the Complaints Officer on the above number. She will pass them on to the Borough Engineers who are responsible for street lighting in Southwark.

All lamposts have a number on the column. If you make a note of this number and quote it to the complaints officer, the light should be fixed fairly quickly. If you don't have a phone pop into the Borough Community Centre at 56 Southwark Bridge Road and we'll phone for you.

Complaints phone no
703 5464 ext 2330

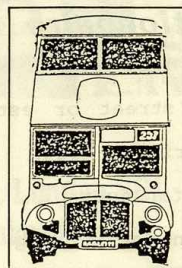
BRING BACK OUR BUS STOP

Many local residents are annoyed that the no. 47 bus no longer stops in Duke Hill Street just before turning right onto London Bridge.

A few weeks ago, without consulting anyone, London Regional Transport shifted the stop to the foot of London Bridge. While this is more convenient for commuters travelling to Liverpool St Station, it puts residents from Bermondsey and Rotherhithe at a disadvantage.

Many people coming from east of Tower Bridge used the Duke Hill Street to go to Guy's Hospital. Now they will have to cross Borough High Street which is a very busy road and a danger to the elderly.

SE1 understands that the shift is for a trial period of three months. But why not have the two stops to the satisfaction of everyone?



In a reply to a letter from the North Southwark Community Development asking for the stop to be restored, the District General Manager of Abbey District recognised that the loss of the stop was a drawback to the elderly and added that it would be desirable to retain both stops. However, he added that this was a fair way off. We think it should be restored sooner rather than later. Come on LRT - give us back our bus stop.

If you want to write to LRT about this, the address is: The District General Manager Abbey District London Regional Transport 210-212 Baker Street London NW1 5RT

**SE1 SENDS ITS
GREETINGS TO SID
AT THE
WHEATSHEAF
PUB
BOROUGH MARKET**



**A GENEROUS SUPPORTER
OF OUR NEWSPAPER**

SE1 NEWSPAPER

SE1 Newspaper is produced for residents of Waterloo and Nth Southwark by people living & working locally. We welcome your letters, news, photos or other contributions. SE1 particularly welcomes stories which reflect the multiracial and multi-cultural character of our area.

NEXT COPY DATE

Copy date for the next issue of SE1 is Wed 28th May. All contributions should be sent to 12 Meymott St, SE1.

SE1 AVAILABLE AT

If you want to receive your copy of SE1 regularly, it is available from the Waterloo Action Centre, 14 Baylis Rd, or from the Borough Community Centre, 56 Southwark Bridge Road.

ADVERTISING IN SE1

SE1 Newspaper is run on a tight budget and largely financed by advertisements. If you would like to advertise your activities, events, jumble sales, products, services or whatever, you will find our rates very reasonable. To find out more about advertising in SE1 Newspaper, ring Gerry on 928 0711.

SUBSCRIPTIONS

Subscriber rates to SE1 Newspaper are £5 a year for individuals and £15 for institutions. Cheques should be made payable to SE1 Newspaper and sent to 12 Meymott St, SE1.

SE1 EDITORIAL GROUP

Mary Dymmond, John Howes,
Dave Scott, Chris Smith,
Keib Thomas, G Vignola,
Paul Wheeler
Thanks to Anike Faturoti

Secretary of State declines North Southwark walkabout

The Secretary of State for the Environment, Kenneth Baker, has turned down an invitation to visit North Southwark to see its problems at first hand.

The invitation was made in March by Ted Bowman, Chair of the North Southwark Community Development Group, after the Secretary of State had rejected the North Southwark Plan.

The Plan, two years in the making, was prepared by Southwark Council with the active involvement of many local community groups. Its aim was to put the community first in all proposals for changes of land use and redevelopment schemes. Southwark council is now preparing a legal case against the government's rejection of the Plan.