

SE1

ISSUE 44 JULY/AUGUST 1986 FREE COPY

ENTER THE SE1/LWT
PHOTOGRAPHIC COMPETITION

CITY SAFARI



Photo by Mike Birkhead

1 SE1 newspaper and London Weekend Television are holding a photographic competition open to all. There will be two age groups - those under 18 and those over 18 years of age. You are invited to send us your black and white or colour photos of animal wildlife in London. First prize in each section is the book of LWT's forthcoming series "City Safari"; runners up will receive a free pass to London Zoo.

"City Safari" is a new series from LWT which can be seen in London starting Friday 18th July at 6.30pm. There will be six 30 minute programmes at the same time each Friday until August 22nd. The programmes capture on film the many forms of wildlife to be seen in London which often go unnoticed.

3 To coincide with the series, there will be an exhibition by photographer Mike Birkhead of animal wildlife in London. The exhibition opens on Friday 18th July at the Natural History Museum, Cromwell Road, South Kensington. It will be open every day from 10am till 6pm and from 2.30 till 6pm on Sundays. Entrance is free.

Closing date for our photographic competition is Friday 8th August. All entries should be sent to SE1 newspaper, 56 Southwark Bridge Road SE1, and don't forget to include your name, address and telephone number if you have one. The entries will be judged by Mike Birkhead and LWT photographic staff and winners will be notified by SE1 newspaper about the presentation of their prizes in the middle of August.

Their health at our expense

**Report shows the cost to North Southwark
of private patients in public hospitals**

An official report just published by the Auditor General has confirmed what health service campaigners and trade unionists have been saying for years: private patients in NHS hospitals cost the public money, they receive more expensive treatment than NHS patients and they rob the public patient of vital health services.

The report shows that charges for private patients receiving treatment in public hospitals, which are fixed by the government, are not high enough to cover the cost of the treatment they receive. For example, in Lewisham & North Southwark Health District in 1984, the cost of treatment for 172 patients who had coronary artery by-pass operations was £1,500 more for each of them than what they were charged. The Health Authority lost a further £2,500 on each of 47 private patients who had heart valve replacements at Guy's or Lewisham Hospitals. Total cost to the public? £376,000 alone in one year on two types of operations in North Southwark.

The report also points out that private patients receive more expensive treatment and undergo more major operations in comparison with the average NHS patient. They also

stay less time in hospital to avoid higher charges. Charges are made on a standard daily basis regardless of the type or actual cost of treatment. To take advantage of this, consultants minimise costs to their private patients by operating in public hospitals and then transferring them to private convalescent homes within two or three days, where charges are lower. All the private patient pays the NHS is the standard daily rate and not the real cost of his treatment.

waiting list

Even graver than the loss of money to the public health service through the treatment of private patients is the way in which the NHS patient suffers as a result. The Lewisham & North Southwark Health Authority, which has complained to the government about the low charges to private patients, has estimated that properly charging them would enable it to perform 75 heart operations more a year on NHS patients than would otherwise be done.

We can only ask ourselves though what price private patients at all in the National Health Service when throughout the country 500,000 people are waiting to be operated on in our public hospitals?

SE1

INSIDE....

•summer playschemes

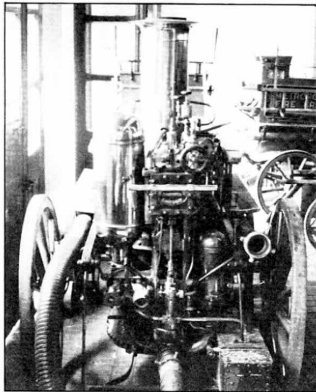
•fire museum

•guide to local services

When the Great Fire destroyed medieval London in 1666, only a gap in London Bridge caused by a previous fire in 1633 prevented it from jumping the river and reaching Southwark. Even here, sparks set light to a stable in Horse Shoe Alley and two houses burned down before a third was demolished to make a successful fire break.

In 1680, Fire Insurance Companies were set up. Each company had its own fire brigade to protect insured properties which bore a metal 'fire mark'. The first professional firefighters were recruited from among the dockworkers of Southwark and from the watermen who plied the Thames. In 1833, these private insurance companies merged to form the London Fire Engine Establishment. But after a large fire in a river-side warehouse in Tooley Street in 1861 which raged for two days and resulted in insurance claims of over £2 million, the private insurance companies relinquished their fire fighting role to the government. In 1865, a public fire service for London was established known as the Metropolitan Fire Brigade. The headquarters of the newly formed Brigade, which were opened thirteen years later, were located in Southwark Bridge Road, in what is now the fire station and firefighters training school.

Given the close association of North Southwark with fire and firefighting, it is only fitting that the London Fire Brigade Museum has its home here at the historic Winchester House in Southwark Bridge Road, home of London's first Fire Chief in



1878. It was set up in 1970 by its present curator John Andrews, who was born and brought up in Waterloo, and he was joined five years later by Sid Brown. Both have done a fine job in building up this unique museum, the most comprehensive of its type in the country.

Through its seven rooms of exhibits (practically all donated by private individuals, including overseas visitors), from the days of the Insurance Companies to the present day, visitors can see the evolution of fire fighting equipment, appliances and techniques. Separate rooms are dedicated to communications, breathing apparatus, models of appliances, fire-fighting during the blitz and an international room with insignia and helmets from fire services throughout the world. Finally, a large garage houses a number of firefighting appliances from a Newsham built in 1725, a beautifully maintained and fully working horse drawn steamer of the 1890's to Second World War fire trucks.

The London Fire Brigade Museum is located at Winchester House, 94A Southwark Bridge Road, SE1. It is open to the public and entrance is free. Visitors, however, must make an appointment to see the museum, either at the reception desk or by phone on 587 4273. The opening times are Monday to Friday 10am till 3pm. It is closed at weekends and on Bank Holidays. Ask to speak to the curators, Sid Brown or John Andrews.

LAMBETH HOUSING BENEFITS

The chaos continues for Waterloo's claimants

Fred Taggart, the new Chair of the Housing Committee at Lambeth Council attended a meeting of the Association of Waterloo Groups at the beginning of June to listen to the complaints of claimants, advice workers, local Housing Associations and union members from Lambeth council.

What he heard was came as no surprise to anyone who has had the misfortune to claim housing benefit from Lambeth over the past three years.

Internal reports from Lambeth show that:
1. There are 1,000 claims still dealt with since 1983.
2. There are over 9,000 claims which are over one year old.
3. One and a half million pounds is missing from Lambeth's rent accounts for every week that the present chaos continues.

and management responsibilities for Housing Benefits. The Council's excuse when asked why nothing had happened following this report was that there is "union opposition". But all the NALGO members and their shop stewards who were present at the meeting let Fred Taggart know that it wasn't their union that was holding up progress and pointed the finger at senior officials.

Since the meeting, the situation has worsened as staff in the Directorate of Finance have taken further industrial action.

Despairing of any signs of improvement, the Association of Waterloo Groups have made a complaint to the Local Government Ombudsman on behalf of Waterloo's claimants. North Lambeth Law Centre has been approached by several tenants associations, Housing Co-ops and the Lambeth Unemployed centre who all want Lambeth threatened with Judicial Review in the High Court.

Will Fred Taggart have any impact or will Lambeth only change for the better after being dragged through the courts? He has agreed to return in three months to report back to AWG. After three years, Waterloo's claimants want more than promises this time.



Last September, the Council agreed a 'Strategy' which proposed to deal with the chaos by changing political

WATERLOO ADVENTURE PLAYGROUND

Summer Play Scheme '86
22nd July - 30th August

During Waterloo Adventure Playground's Summer Play Scheme for 1986, there will be a host of activities including those listed below:

- Go-karting, inflatables, football tournament
- Family trip to Westgate
- Trip to Thorp Fun Park for Kids
- Barbeque's, discos, kite making, mask making, pottery, musical instrument making, day trips, theatre, cinema, ice-skating, swimming, etc

Adventure week camp for over 11's, including climbing, horseriding, canoeing, etc

Adventure weekend camp for under 11's

30th August, Pete & evening disco/BBQ
All welcome

The Playground is located opposite the Waterloo Action Centre on the corner of Baylis Road and Waterloo Road behind the big billboards

Ring Andrew Tedder on 633 9635 for more details

GROTTO PLACE PLAYGROUND
Illegal parking to be stopped

After complaints from local residents and action by Cathedral Ward councillor Geoff Williams, Southwark public works department is taking immediate steps to keep private cars out of the Grotto Place Playground Site.

Commuters have been abusing this Playground, behind the Fire Station on Southwark Bridge Road, by parking their

cars there because the gates have been missing. Now, the playground will be patrolled to prevent illegal car parking while new gates are being installed.

Geoff Williams intends to monitor the Playground daily until the works are completed to prevent commuters using our public play facilities as a personal car park.



Photo by Robert Cowan (Roof)

COIN STREET LIFT OFF

On Monday June 16th Flying pigs and Coin Street campaigners celebrated the start of building work on houses which they were told could never be built "in the real world".

Elliot, the building contractors were down on Site "C" first thing on this sunny morning. Studio Six were serving bacon rolls and Bucks Fizz. 'Spitting Image' loaned their Flying pigs, with newly revamped pink feather wings. With a little help from some big red meteorological balloons from Manchester and a lot of helium the pigs spent a balmy morning flying around the old Coin Street car park, with the Oxo Tower in the background.

This is the site that gave the Campaign its name. It was the original site that local people identified for housing in a 1973 consultation on the Waterloo District Plan. They stuck by this vision and steered it through all the inquiries, committees, lobbies and administrations - and years! The fact that this was actually the start of the first 56 homes with gardens made hearts as well as pigs fly that day.

The scale of the park next to these houses is now beginning to show. As the demolition is completed the views across the river open up. The riverwalk and the piers out over the water are also being completed.

The programme now turns to Stamford Wharf. On the riverfront it will be partially demolished to make a public arcade through the ground floor in front of the shops. More demolition will separate the building into two parts, let more light in throughout, and provide accommodation for flats, workshops, a museum and a rooftop restaurant.

If you are interested in the development of the wharf and you live in the SE1 area, contact the Coin Street Community Builders and come along to the consultation meetings at 99 Upper ground, SE1 or ring 633 9651.

WOMEN AND CHILDREN'S CLUB...

For women under 21. Come and meet friends, find out information you want, try new things... There'll be trips out, activities in the club, space and time to relax and have a chat, and anything else you want to make happen. We'll be in the Rainbow, in Crosby Row, on Thursdays from 2.00 - 4.00pm. If you'd like to know more, please contact Kate or Gaynor at 40 Tabard Street on 407 1123.

Volunteer Drivers

If you could drive for us, just once in a while perhaps, we'd be really grateful. Short or long, regular or one-off. For the Over 60's Club and for the Young Women's and Children's Club. Please contact Kate on 407 1123.

If you're Over 60....

We want to share your memories of what life used to be like! Come along to 40 Tabard Street on Tuesdays, 2.30 - 3.30pm and tell us younger ones what you used to get up to. There's minibus transport for anyone who needs it. Contact Kate On 407 1123.



CHARTERHOUSE IN SOUTHWARK
40 TABARD STREET
LONDON SE1 4JU
01-407 1123

New Session for Children with Special Needs

The toy library is such a success that it's expanding! It's entirely free to anyone who wants to come along. This new session is especially for children with special needs. But, because it's brand new, it's your chance to tell us what you want and help to run it. Come and tell us how to spend our budget of £100's of pounds. Toys can be taken away or you can join the many who come and have a chat and a cup of tea while the little ones play. What are you waiting for, come along! Ring Barbara on 403 3214 or 231 0980 to find out more.

ARK ANGELS - Summer Playscheme

Remember the 'Crosby Cruisers' last year? Well, this summer look out for the 'Ark Angels'! They'll be on the streets from Monday, July 28th - Thursday, 14th August. And they'll especially be around Whitesounds, Elim Estate, Kipling Estate and Haddon Hall. Do you live anywhere near there? Well there will be three exciting adventures for all 4 - 11 year old Angels to join in from 2.00 - 4.00pm with games and arts & crafts.

3RD BORO FESTIVAL SATURDAY, 12TH JULY 2PM TO MIDNIGHT

Displays, Food, Sideshows Stalls, Music, Dance, Theatre, Beer Tent,

Dance
7-12 pm Entrance Free



A GUIDE TO USEFUL SOUTHWARK COUNCIL TELEPHONE NUMBER Z

as a service to its readers, SE1 newspaper has compiled
below a list of the telephone numbers of some
of the main services run by southwark council

C

consumer services

Consumer Advice Centre
376 Walworth Road, SE17

consumer advice, consumer
complaints against retailers,
money advice, street trading,
weights & measures
703 5049

E

elderly

holidays, rest & recuperation
holidays for the elderly and
handicapped

703 5464, Area 1 Social
Services (west of London
Bridge)

407 5344, Area 2 Social
Services (east of London
Bridge)

home helps

703 5464, Area 1

407 5344, Area 2

meals on wheels

703 5464, Area 1

407 5344, Area 2

Stonesend Day Centre
for the elderly and elderly
disabled
Soovell Street, SE1
bathroom, chiropody, crafts,
hairdresser, keep-fit, midday
meals, library, TV room, shop
403 5336

environmental health

Environmental Health
19 Grange Road, SE1

complaints about food, health
& safety in shops,
restaurants, etc

231 7331

disinfecting station

237 4968

noise - complaints about

barking dogs, alarms,

bonfires, parties, etc

231 7331 x 223

703 6311, weekends

pest control

231 7331

special laundry services

231 7331

H

housing

Bermondsey District Office
1-3 Spa Road, SE16

application for garages
estate lighting
homeless families, housing
waiting and transfer lists
mutual exchanges
rent & rates inquiries and
rent and rate rebates
repairs
237 6677

L

leisure

Southwark Leisure
186 Walworth Road, SE17

Entertainments:
concerts, fairs, galas, kids
shows, public entertainments
703 3499

Halls:

booking of halls, rooms, etc
for meetings, functions
703 3499

box office for events

organised by Southwark

703 3499

booking of football and
cricket pitches and southwark
park astro-turf

703 3499

Sports:

dry sports and weights

582 5505, Elephant

703 3024, Camberwell

sports events, sports

coaching programme

703 3499

swimming pools

582 5505, Elephant

237 3296, Rotherhithe

237 6572, Southwark Park

703 3024, Camberwell

libraries

Libraries Department
20-22 Lordship Lane, SE22

Bermondsey

Spa Road, SE16

237 6677

Blackfriars

7-12 Borough Rd, SE1

928 5562

Borough

John Harvard Library

211 Borough High St, SE1

407 0807

P

public works

Public Works Department
Municipal offices
Larcom Street, SE1

abandoned vehicles
703 5464 x 2116
broken paving stones and
potholes

703 5464

cemeteries & crematorium

639 3121

general enquiries and

complaints

703 5464 x 2330

refuse collection and

disposal

703 5464 x 2311

registration of births,

deaths and marriages

703 5464 x 2122

residents parking

703 5464 x 2020

sewers and drains

703 5464 x 2330

street cleaning

703 5464 x 2311

streetlighting

703 5464 x 2330

S

social services

Social Services Department
Area 1 - west of London Bridge
Municipal Offices
151 Walworth Road, SE17

Area 2 - east of London Bridge
283 Tooley Street, SE1

blind & visually handicapped

703 5464, Area 1

407 5344 x 26, Area 2

deaf

703 5464, Area 1

day nurseries

703 5464, Area 1

407 5344, Area 2

home helps

703 5464, Area 1

407 5344, Area 2

meals on wheels

703 5464, Area 1

407 5344, Area 2

occupational therapists

703 5464, Area 1

407 5344, Area 2

registered child minder

services

703 0941, Area 1

turkish cyriot specialist
worker

703 5464, Area 1

workshops for the disabled

701 8686, Area 1

407 5344 x 32, Area 2

U

under 5's

Council Day Nurseries

Whitstable Day Nursery

Stevens St, SE1

403 0056

Tenda Road Day Nursery

Tenda Road, SE16

237 0616

Voluntary Community Nurseries

Bermondsey Community Nursery

283 Tooley Street, SE1

407 5344 x 30

Rosalind Community Nursery

5 Otford House,

Staple Street, SE1

(Tabard residents only)

403 7434

Inner London Education

Authority Nursery Classes

Charles Dickens School

Lant St, SE1

407 1769

Eveline Lowe School

Marlborough Grove, SE1

237 3207

Friars School

Webber St, SE1

928 5501

Grange Primary School

Webb St, SE1

237 2161

Joseph Lancaster School

Nursery class at Lawson

Estate, Deverall St, SE1

407 1365

St Josephs RC School

148A Borough High St, SE1

407 2642

Cathedral School of St

Saviours & St Mary Overie CE

Redcross Way, SE1

407 2600

Snowfields School

Kirby Grove, SE1

407 5194

Tower Bridge School

Fair St, SE1

407 2959

ILEA Nursery School

Kintore Way Nursery School

Grange Road, SE1

237 1894

PUBLIC DISCUSSION ON HEALTH ISSUES IN NORTH SOUTHWARK

The North Southwark Community Development Group has invited the District General Manager of the Lewisham & North Southwark District Health Authority to discuss the major health issues which affect the residents of North Southwark. The meeting has been tentatively fixed for Wednesday July 16th at 8.00pm at Borough Community Centre, first floor. Everyone is welcome to come along, but please ring 928 0711 to confirm the date of the meeting.

NORTH SOUTHWARK COMMUNITY DEVELOPMENT GROUP

LAMBETH HEATWISE

Help for low income households in insulation campaign

A draught-proofing and insulation campaign to help keep low income Lambeth homes warm and their heating bills low next winter is now on in Lambeth.

Lambeth Heatwise, the registered charity behind the campaign, is asking those receiving supplementary benefit, supplementary pension, housing benefit supplement, the unemployed, and those who have less than £500 in savings, to contact is and have their homes draught-proofed and hot water tanks insulated, under the DHSS Single Payments Scheme.

Already, 127 low income residents out of 130, on behalf of whom Lambeth Heatwise applied to the DHSS for single payments to buy draught proofing material and hot water tank insulation jackets, have

received DHSS approval. Eighty two of them have had the work done, free of labour charges.

Brian Murphy, Lambeth Heatwise's manager explained that the campaign "is aimed at low income earners because they spend a higher proportion of their income on fuel, and are more likely to live in lower standards of housing with expensive methods of heating. Many pensioners in particular, are faced with the prospects of cold-related illnesses, or even hypothermia in winter."

If you are in one of the above categories and need your home insulated ahead of next winter, then contact Abi or Paula at Lambeth Heatwise, 71 Balham High Road, SW12, or telephone 675 6822.

BRIGHTENING UP LAMBETH money available for schemes

Did you know that money is available from the Lambeth Inner City Partnership for schemes to improve the environment in your area? An environmental improvement is any scheme which brings a new lease of life to the appearance of those buildings, streets and pieces of neglected land which you see every day in your area. Some of the money available is solely for schemes put forward by community groups.

In recent years many community groups in Lambeth have turned their ideas into reality, like the Reedwood St Ecological Garden created by the Archbishop Sumner Primary School. Several mural have been painted and play facilities provided too.

Council planners are prepar-

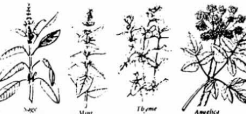
ing a programme of schemes likely to start next year. It takes a lot of time to progress ideas, so don't be put off. Whether you belong to a tenants or residents group, a mothers & toddlers group or even if you don't belong to a group at all, you can put forward your ideas for funding. The Council will provide all the assistance.

Public meetings will be held in your local area in late August and early September. Bring your ideas along and talk about them to council planners, or you could organise your own meeting and planners will be pleased to come along to it.

For further information, give Dave Taylor a ring on 674 9844 ext 115 or speak to your local community worker.

GARDENING WITH KEIB THOMAS

Herbs come in all shapes and sizes, they may be annual, perennial or shrubby plants. One thing they do have in common is that they are mainly grown for their cooking qualities, though many grow them for their heady scents or because they attract the bees and butterflies throughout the autumn.

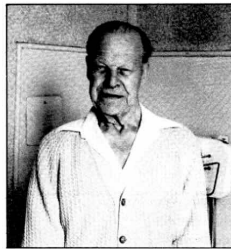


Generally, herbs need a light, well drained soil in as sunny a spot as possible. Some herbs like Angelica may grow to 6ft! However the majority of the common herbs are compact enough to be grouped in a large pot or window box. Some useful herbs to start with are thyme, parsley, marjoram, chives, mints, sage or basil.

Though happiest outdoors, all of the above will grow on an inside window sill. Most people are familiar with dried herbs which are very useful but have lost 75% of their flavour and scent. The aroma of freshly cut herbs is a summer sensation ... try marjoram, it's quite unforgettable.

Tooley Street character dies

It is with great regret that SE1 reports the death, at the age of 84, of 'our Ron', Ron Histed, well known in Tooley Street for his upright stance, and open neck shirt summer and winter. He will be greatly missed by the community.



Ron was a great letter writer. I'm sure MP's past and present and local councillors will miss the flow of his letters written on behalf of local residents, as well as the DHSS which he harassed on behalf of anyone who wished it.

The windows in Devon Mansions will not sparkle as they used

to. Ron turned window cleaning into an art form. Donations collected by friends and neighbours will be sent to the National Heart Foundation in his memory.



THE PARISH OF WATERLOO is the Church of England in the Waterloo area. All are welcome to any of our activities. Parish Office tel: 633 9819.

Residents car parking in North West Southwark

new controlled parking zone proposed by the council

Residents of the Borough are all too familiar with the problems of through traffic and commuter car parking in the area. Commuters clog the streets with their vehicles, park illegally, on the footpath or wherever it suits them. Many residents who own cars and have residents parking permits often have to drive around for an hour during the day in order to find a place to park.

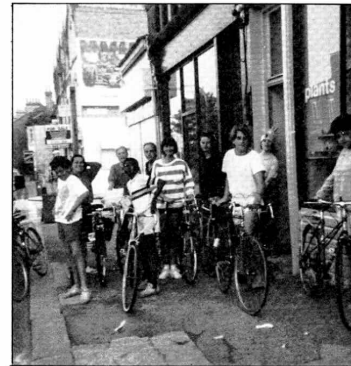
Local residents have complained long and hard to the council about this unfair situation. Many council officers have positively obstructed any improvement in the situation which has been promised to residents for a long time. Now, the Council is proposing to make North West Southwark a controlled parking zone, which will bring new restrictions for

commuter parkers and widen the residents parking permit zone.

The controlled parking zone will now extend west of Borough High Street, Newington Causeway, Elephant & Castle and Newington Butts. Residents with cars can apply for a residents parking permit, at £20 a year, entitling the holder to leave their car for any period within the controlled parking zone. Meter charges will be raised, though at twenty pence an hour commuters are still getting it cheap. It remains to be seen if the new regulations are enforced.

Residents who want more information on the proposals, or who wish to make comments, should contact the Deputy Town Clerk's Office at the Town Hall on 703 6311.

ROCKINGHAM TO BRIGHTON SPONSORED BICYCLE RIDE



On Sunday 15th June Andrew, Leon, Lisa, Colin, Debbie, Simon, Gary, Clifford, Lavia, Sarah, Brigitte and Mary, all members or workers of the Rockingham Estate Play Association, joined the London to Brighton cycle ride, on their own fund raising exercise for the Association.

They left at 6am in the morning from Clapham Common and by the time they reached Carshalton they already had two flat tyres and Debbie's wheel had fallen off! Not to be put off by these minor setbacks, they cycled on and by 1.45pm, Andrew had reached Brighton with the rest of the group not far behind.

The rest of the group, that is, except for Sarah and Debbie who gave up after 30 miles. "We had a lot of mechanical problems", said Debbie.

Over £600 was raised for REPA to go towards playschemes, Adventure Playground, the Nursery and a holiday away for the children on the estate.

SOUTHWARK REVAMPS PLANNING DEPARTMENT

Southwark Council's town planning service has recently been reorganised into area teams. One of these new teams will be dealing with all aspects of planning and development in the area covered by Cathedral, Chaucer and Abbey Wards.

In line with the Council's desire for close contact with the community, the new team is keen to make and maintain contacts with as many of the area's groups and organisations as possible.

If your organisation would like one of the team's planners to come along to one

of your meetings to explain the Council's planning policies and the work of the planning service or simply hear your suggestions for improving the facilities or appearance of the area, write to:

Phil Gratton
Area Planner
Planning Division
30-32 Peckham Road
SE5 8QP

Alternatively, you can ring Rosemary Duckworth on 703 6311 extension 2328 who will be pleased to arrange for someone to attend your meeting.

In Memory of Elsie May Keenan

A lovely person and much loved by everyone that knew her in Waterloo

Our hearts and thoughts are with June, Les and family

MORLEY Prospectus now available. SEPTEMBER CLASSES

LETTERS

Dear SE1

POST OFFICE VICTORY

Your readers will recall that following our campaign against Post Office closures in Southwark, the decision on the future of the 'Borough' Crown Office in Borough High Street was deferred for one year.

I am delighted to inform you that my Branch have received a letter from Post Office Management telling us that the Office will remain open and that there are no plans to close it in the future.

There can be little doubt that the North Southwark Campaign Against Post Office Closures played a major role in keeping this essential office open. My Branch will always be grateful to those marvelous people who took so much time and trouble to protest at the Post Office plans even in the most appalling weather.

The partnership between the UCW and the local community proved formidable and I do not believe the Post Office will take us on again in a hurry.

Many thanks for all your help.

Moss Haley, Secretary
Union of Communication Workers
South East London Counter & Clerical Branch

Dear SE1

BAD BEHAVIOUR

I would like to bring to your readers attention a new and quite unbelievable attitude by several stallholders in Lower Marsh market. The other day I went for a stroll in the market. I was chatting to several people I knew when two stallholders asked us to move away from the front of their stalls (presumably because they felt in some obscure way that we were blocking their display of goods).

These are the very same stallholders appealing to local people for support for their market. Well, if they want to drive people away through ignorance and ill manners they have chosen the right way to go about it.

Can you imagine being stopped in Marks & Spencer for example and being asked to leave because you were chatting to a friend and not buying something? The whole idea is preposterous.

I feel very angry at having an innocent afternoon stroll spoiled in this way and feel stallholders should be reminded that without local rate-payers money and goodwill there would be no Lower Marsh market at all.

Yours sincerely
Anne Critchley

★ BAZAAR ★

Come along and have an enjoyable afternoon at

STONES END DAY CENTRE

Scovell Road, SE1
Saturday, 19th July

Something for all the family, including Stalls, games, raffles, lucky dips, home made cakes, plants, etc

Plowmans Lunches, Teas, Ices
Strawberries & Cream

ADMISSION FREE

PICKWICK PLAYScheme

21ST JULY - 8TH AUGUST
10am - 4pm, Monday - Friday

Events include:
Arts & Crafts, photography, swimming, trip to the zoo roller skating, ice skating, farm visit, visit to the seaside, outdoor sports

30 children aged 8 - 11 years

Ring 633 0383 for details, or drop in

The playscheme will be run in accordance with the Project's anti-racism & anti-sexism policy

Pickwick

1 - 5 Rushworth Street, SE1

FLATS FOR LADIES

EDWARD EDWARDS' HOUSE

*Nicholson Street
Blackfriars Road, SE1*

Edward Edwards' House is a modern complex of thirty eight one-person flats, arranged around a central garden. Each flat has a large bed-sitting room, kitchen and bathroom. They are rent and rates free, and the central heating is also free of charge.

A Housekeeper is in residence, and there is a communal lounge with Dinner Club facilities.

If you would like to be considered for one of these flats, and can answer yes to the following,

Have you lived in the Borough of Southwark for at least five years

Are you over 60 years of age, and of good character and limited means

Are you in good health and able to look after yourself

please ask for an application form from:

The Clerk to the Trustees
Christchurch United Charities
Municipal Offices
151/153 Walworth Road
London SE17 1RY

Christchurch United Charities

DEMOCRACY IN DOCKLANDS?

"What a waste of time" was the reaction of those who attended the first ever London Docklands Development Corporation Planning Committee meetings open to the public. After four years of secrecy the LDDC allowed the public in to watch the committee that deals with planning applications.

Many people who attended the meetings were startled to find out that they were unable to speak or comment on any of the items on the agenda. As Beryl Donovan of the Cherry Garden Action Committee said at the second meeting, "what is the point of us being here if we can't ask about things which affect us".

Many of the planning applications considered by the Committee were housing developments on key sites for

the community such as Cherry Gardens and Greenland Dock. No community views on these schemes were heard. Written representations were dismissed as well. A mixed housing and shops scheme was given the go ahead in spite of objections from shopkeepers at Dockhead worried about their trade. All the deliberations of the Committee had a pre-ordained ring to them.

Despite these 'open' meetings of the LDDC's Planning Committee, forced on them after four years of criticism by residents, the public will not have access to all their secrets. The Corporation is not covered by the new Local Government Access to Information Act. This came into force on April 1st 1986 but it applies only to local authorities and not to government appointed Quangos like the LDDC.



**Democracy
for
Docklands
CONFERENCE**
'Docklands after the LDDC'
Saturday 26th July at St John's Community Centre
Glengall Grove, Isle of Dogs
10.30am - 3.30pm

Ring Julie for details:
231 0916

Monsters planned for riverside sites

Plans are before the Council for the development of two major riverside sites long blighted by greedy speculators, holding onto them until the market improved.

The sites concerned are by Blackfriars Bridge (the Edger II site) and by Southwark Bridge (the Laing site). In the case of the Blackfriars site, a 180,000 sq ft office building towering to 13 storeys is proposed, covered in glass and designed to make the area feel yet less a place for human beings, particularly local residents who will gain no benefit from the building, but who will suffer from the increased pressure for commuter parking and the loss of a site earmarked for housing in the North Southwark Plan.

On the Laing site, a 210,000 sq ft 11 storey office building and a 116,000 sq ft 15 storey residential building are proposed to a design more suited to downtown Manhattan than North Southwark. It has already been slammed by the Royal Fine Art Commission as an overdevelopment of the site and based on a fundamental misconception in the bulk of the scheme.

More important though is the effect the buildings would have on the adjacent Courages development. Not only would the recently opened up view across the river be closed but office workers would use the pedestrian access through the residential part of the Courages site as a short cut; Park St would be clogged with commuter traffic - there are only 30 spaces in the office underground car park!

SE1 believes that the fight by the local community against offices and luxury housing over the past years has been right. That these sites have lain vacant for so long waiting until their owners could make a fat profit out of them is a

SE1 Newspaper

SE1 newspaper is produced for residents of Waterloo and Nth Southwark by people living & working locally. We welcome your letters, news, photos or other contributions. SE1 particularly welcomes contributions from the area's ethnic communities.

NEXT COPY DATE

Copy date for the next issue of SE1 is Wed 27th August. All contributions should be sent to 56 Southwark Bridge Road, SE1 OAS.

SE1 AVAILABLE AT

If you want to receive your copy of SE1 regularly, it is available from the Waterloo Action Centre, 14 Baylis Rd, or from the Borough Community Centre at 56 Southwark Bridge Road.

ADVERTISING IN SE1

SE1 newspaper is run on a tight budget and largely financed by advertisements. If you would like to advertise your activities, events, jumble sales, products, services or whatever, you will find our rates very reasonable. To find out more about advertising in SE1 ring Gerry on 928 0711.

SUBSCRIPTIONS

Subscriber rates to SE1 newspaper are £5 a year for individuals and £15 for institutions. Cheques should be made payable to SE1 newspaper and sent to 56 Southwark Bridge Road, SE1 OAS.

SE1 EDITORIAL GROUP

May Dymmond, John Howes,
Dave Scott, Chris Smith
Keib Thomas, G Vignola
Paul Wheeler

disgrace when the community needs jobs and affordable homes.

The plans for these developments can be seen at the Planning Department 30-32 Peckham Rd SE5. If you wish to object to these schemes write to the Borough Planner at the same address. For further details contact the North Southwark Community Development Group on 928-0711.

