

SEL

ISSUE 45 SEPTEMBER 1986 FREE COPY

Cough up Minister!

Lewisham & North Southwark Health Authority has finally agreed to put its weight behind the Community Health Council's proposal for a joint delegation to see the Minister for Health to press the case for extra money for the area's health services.

The commitment from the Authority came at a meeting organised by the North Southwark Community Development Group attended by officers and members of the Authority and nearly 50 residents concerned at the state of local health services. Included on the delegation would be the Area Health Authority, the CHC, MP's for the area, local councillors from Lewisham and Southwark and representatives of the local community.

SEL newspaper has frequently highlighted many of the problems facing the National Health Service in the area - hospital closures, cuts in the number of beds, staff redundancies, slow progress on developing services for the elderly and mentally ill and new facilities at St Olave's Hospital, long waiting lists at Guy's hospital for appointments and routine operations, and discharging people from hospital, particularly the elderly, before they feel ready.

Those at the meeting had the chance to question the people in charge of the provision of health services in North Southwark about these and other issues. While there were many differences of opinion everyone was unanimous

that the area was being starved of resources by the government and that the case for more money needed to be directly put to the Minister responsible.

a concerted voice

The concerted voice of the residents at the meeting helped to convince the Health Authority that they should throw their weight behind a direct approach to the government. However, past experience suggests that the delegation might come away empty handed. During the last 5 years of Mrs Thatcher's rule, England has lost 196 hospitals, 17,025 beds, 3,051 community doctors, 20,000 ancillary staff, and 35 hospital schools.

Light at the end of the tunnel?

There are signs that the clamour of local opposition to the proposed siting of the Channel Tunnel Terminal at Waterloo is beginning to be heard by the government.

The Minister for Transport, David Mitchell, visited Waterloo in July to get a first hand picture of the problems for himself. He was able to see the present traffic congestion around Waterloo Station and the housing and local community that residents are trying to protect. Residents pointed out to him that the area would be devastated by a development which would bring as many passengers to Waterloo as now use Gatwick airport.

Lambeth Council believes that it also won a breakthrough in the battle against siting the Terminal at Waterloo when the Minister for Transport agreed to meet councillors from London boroughs affected by the proposals. After the first of these meetings in August, Councillor Bob Colenutt, Chair of Lambeth's Town Planning Committee, said that "the Minister of Transport gave some indication that he would be prepared to look at other options for Channel Tunnel Terminal facilities. I have written to him for confirmation of this, and asking that the clauses on siting the Terminal at Waterloo be withdrawn from the Channel Tunnel Bill so that alternatives can be properly looked at."

Some 150 Parliamentary petitions have been submitted by Waterloo residents, as well as 30 petitions from local community groups, against locating the Terminal at Waterloo. All petitioners are reminded that they should attend a meeting with their lawyer, David Harter, at the 99 Upper Ground office of the Waterloo Community Development Group, at 7.00pm on Wednesday 24th September.



3RD Boro Festival

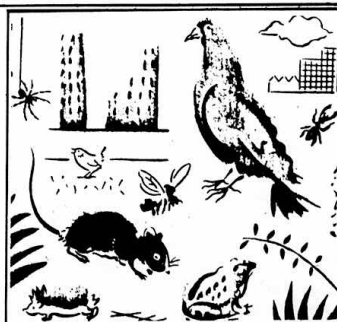
Despite the poor weather, hundreds of local residents turned out for the 3rd Boro Festival, held in the middle of July at the Mint St Open Space.

There were lots of stalls, exhibitions, displays, music and theatre and the day wound up with an evening dance and disco which was packed out.

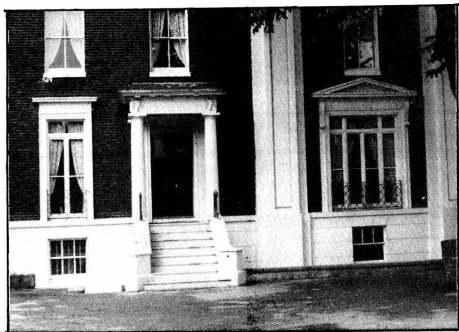
More photos of the Festival are inside your SEL. Here's to the 4th Boro Festival!

CITY SAFARI

Thanks to the efforts of the workers of Borough Community Centre, we were flooded with entries to the photographic competition sponsored by SEL and LWT to coincide with their urban wildlife series 'City Safari'. Winner of the under 18 age group was Martin Avis and winner of the open age group was Barry Kerley. Runners up were Keith Gillingwater and Beatrix Potter, all of Borough. Well done Borough! All entrants received a beautifully illustrated pack which accompanied the series.



Winchester House



In our last issue, SE1 wrote about the London Fire Brigade Museum located in Winchester House on Southwark Bridge Road. Readers might be interested in a little bit of the history of the site on which this listed building stands.

It was originally known as Winchester Park Estate and adjoined St George's Fields which was bounded by Southwark Bridge Road, Copperfield Street and Great Suffolk Street. The land was bought by a Thomas Finch in 1770 who claimed that the water from a spring on the site had medicinal qualities. To attract his customers he laid out gardens, built a house, installed an organ and provided orchestral music. It became known as 'Finch's Grotto' and was very popular.

Later on the business folded and the land was bought by the parish of St Saviour's

which built a workhouse on the site. By the early 1800's the workhouse had closed and the property was bought by Rawlinson Harris, MP for Southwark, and a hatter by trade, who used the workhouse buildings as a hat factory. In 1820 Harris built what we now know as Winchester House as two residences.

In 1866 the entire site and its buildings were bought by the Metropolitan Board of Works which established the headquarters for the newly-formed Metropolitan Fire Brigade. Winchester House became the home of the Capital's new Fire Chief. The old headquarters building on Southwark Bridge Road was damaged during the War and was finally demolished in 1969, opening up Winchester House once more to public view.

by Gordon White

GARDENING

September is normally a dry month with lots of warm sunshine which extends the summer. However, shortening days and the heavier dews that hint of early morning frost, remind us its autumn. Two of the main tasks now are lengthening the flowering period of our existing plants and preparing for winter and spring.

By cutting off the spent flowers (dead-heading) we prevent the flower from creating seeds. This stimulates the plant to continue producing flowers in a desperate bid to create seed. A liquid feed of 'phostogen' will further encourage a final flush of colour.

Spring bulbs are relatively cheap and fail-proof. Boxes of bulbs and bunches of rooted wallflowers will soon be appearing on the shelves and pavements of SE1.

The hard headed gardener will play it by the book. They will uproot their still flowering budding plants and annuals and put in their bulbs immediately. Planting early will ensure that the roots quickly establish themselves in the still warm soil. Their reward will be earlier leaf and flower formation.

Most of us though will buy now but plant later. That way we will enjoy summer flowers until the first serious frosts of October or even November.

The leaf forms of many bulbs bring as much pleasure and interest in winter as do their flowers in spring. Some of my own favourites are

parsley leaved Aubonnet Blanda, the variegated, hardy cyclamen and the striped crocus. 'Little Red Riding Hood' tulips have decoratively red striped leaves followed by vivid crimson flowers.

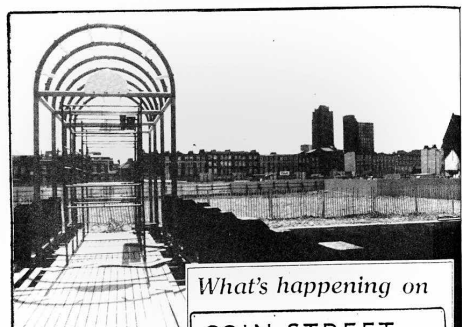
Through spring, bulbs are perfectly hardy and happiest out of doors. They may also be used as excellent indoor plants. Planted in pots or bowls, they prefer a sunny position in the coolest room in the house. Indoors, they need to be watered regularly, a good soak every 2 or 3 weeks is sufficient.

Many hardy annuals may also be sown outdoors in September! They need to reach about 2 inches in height by the end of December to survive the winter. Then they produce bushier and more floriferous plants much earlier in summer than those sown normally in April or May. Sew them a quarter of an inch deep and keep them moist in a sunny position. Any of the following can be sown now: Alyssum, Calendula, Cornflower, Clarkia, Larkspur & poppies.



Recommended shops are 'The Garden Centre' near the junction of Southwark Bridge Road and Gt Suffolk St and 'Roots & Shoots' in Walnut Tree Walk as well as Lower Marsh shops and stalls.

If you want to learn more about plants, there are Gardening Classes at Morley College Main Building starting on September 24th. Or if your group would like an introductory talk or demonstration, ring 928 8501 ext 155 for more details.



Above: View from one of the piers of the site that is now cleared for the riverside park.

Below: Building work on the first Coin Street housing site!



Demolition work on the Coin St site is now completed in preparation for the park and housing. There is still some demolition being done to the Stamford Wharf building to provide the arcade along the riverside. This will complete the walkway between Blackfriars & Westminster Bridges.

The first housing site is highly active and worth a

visit. The piling is completed and the Stamford St side of the foundations are laid. There is a spectacular brick panel on site to show how they will look.

The building contract last 18 months so at the beginning of 1988 there will be 46 family and 10 2-person new homes on Coin St.

Black Sunday 1937

What were you doing on October 3rd, 1937?

Bermondsey based video production group Elephant Video are asking older Southwark residents to cast their memories back to 'Black Sunday', October 3rd 1937. That was the day when thousands of Bermondsey people took to the streets to demonstrate against a march through the streets of their borough organised by Oswald Mosely and his British Union of Fascists.

One of the project organisers said: "People often forget what a radical history Bermondsey has, but you've only got to listen to some of our older folk to realise that

there's a strong tradition in the borough of working people getting together to oppose injustice and intolerance."

The videotape, called 'A Bermondsey Story', made with financial assistance from Greater London Arts and Southwark Leisure, is being produced in November. Elephant Video want to hear from anyone who can remember the day of the march or would like to chat more generally about life in Bermondsey in the 1930's.

If you have any stories and memories you would like to share you can get in touch with Nigel by writing to him c/o LDPC 224-236 Walworth Road, London SE17.

WILD BATTLES AS FASCISTS MARCH

Barricades Up: 111 Arrests

TERRIFIED HOUSEHOLDERS IN SOUTH LONDON FOUND THEIR QUIET SUNDAY AFTERNOON STREETS TURNED INTO BATTLEFIELDS. THEIR DOORSTEPS INTO DRESSING STATIONS. WHEN 2,000 FASCISTS MARCHED YESTERDAY FROM WESTMINSTER TO BERMONDSEY

THE LONDON LABOUR PARTY had advised the people of South London to boycott the march. But Bermondsey and Rotherhithe Trades Council and Borough Labour Party, the Communists and the Fascists all disagreed this advice. Late last night, anti-fascist meetings in many parts of South London, revellers calling for the suppression of Fascism were passed.

Headlines in the 'Daily Herald' 4/10/1937

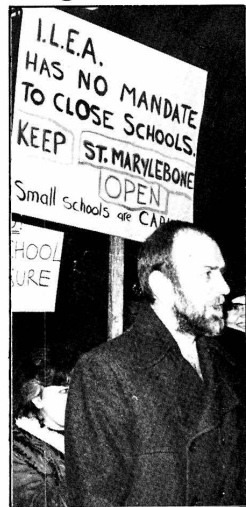
David Wickert leaving Waterloo

One of Waterloo's strongest supporters is leaving and it will be difficult to replace him. David Wickert, Vicar of St Andrews and St Johns (Parish of Waterloo) is leaving the parish to take up an important job within the Anglican Church coordinating their work on inner city areas.

David and his family have lived in Waterloo for the last ten years and in that time he has contributed greatly to community life in the area. Always a strong supporter of campaigns to provide decent housing such as Coin St, David was also instrumental in helping the North Lambeth Day centre move into St John's Crypt.

SE1 wishes David and his family good fortune in his new job and home and hope he'll be back to visit us - he'll always be welcome.

The Parish is also suffering the loss of Tim Naish, Curate. Let's hope the church can find suitable replacements for these excellent workers.



David Wickert joining in a demonstration against closure of local primary schools

Strike a light!

Are you fed up with dark, dangerous streets caused by poor lighting or lights that aren't working? Do you despair of getting the Council to do anything about it? Don't give up, the Bermondsey Lighting Campaign is here.

This is an attempt by local community groups such as North Southwark Community Development Group, Beormund Centre and Rotherhithe Community Development group to do something about the poor state of street lighting in North Southwark.

The Campaign has done a survey of local opinion and you won't be surprised to hear that there is a lot of concern about poor street lighting. The Campaign has also been chasing up those responsible for street lighting at the Town Hall so that we can start to get some improvements - better lighting and improved maintenance.

There are practical things that you can do:- Phone Southwark Council on 704 5564 and ask for extension 2330 every time you see a street light out of order. Give the name of the street and the number on the column.

If there's a special problem in your area then get in touch with the Campaign by ringing 928 0711 and ask for Fiona or Gerry.

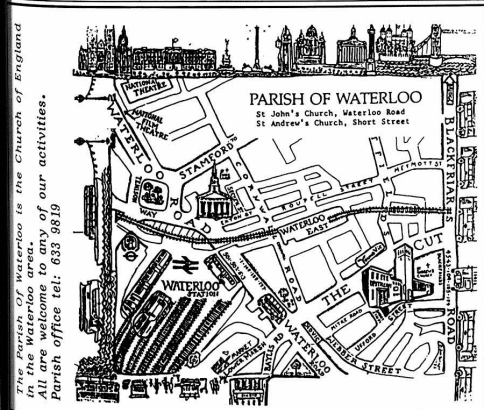
Finally, contact your local councillor and let them know what you think about street lighting and the standards of maintenance.

The Campaign has just produced a Report on 'Standards of Street Lighting in North Southwark'. If you would like a copy of it or want more information on the Campaign then drop into 56 Southwark Bridge Road, SE1 or ring 928 0711.

Totally in Tandem



Anna and Howard Green, from Rotherhithe, are cycling to Nepal 'totally in tandem', to work with a leprosy and TB project. Anna, who works at Dulwich Picture Gallery, and Howard, who helps administer Charterhouse-in-Southwark, will live among the Nepalis, as much in the local style as possible, for two and a half years. On Tues 9th September at 7.30pm at St Mary's South Aisle, you can see slides and hear about their intended work.



These are the Church of England in Waterloo. All are welcome to any of our activities. Parish office tel: 633 9819

Local adult education centre to close...or expand?

The John Harvard Centre stands behind a rather blank wall in Union Street, next door to the Post Office parcels depot. You might not even know it is there - yet it is North Southwark's only centre for adult education. A few years ago, classes were going on here every evening of the week - but more recently the number of classes has been reduced, so that this year the centre is only operating three nights a week.

The Community Education Forum (explained in the other article on this page) has been looking at the reasons for this decline, and now wants to take steps to restore the life and popularity of the Centre, and its usefulness to people living in the neighbourhood.

The Forum believes that the Centre has great potential and could become the focus for a great deal of valuable activity for local people. A number of steps are thought necessary to achieve this end.

** Over the years, the Centre has been allowed to become rather run down in appearance and (particularly on winter evenings) gloomy. The Forum is to press for repainting of the building and perhaps some murals, better

lighting in the courtyard and in the street outside, and improved toilet and changing facilities.

** A canteen worker is to be recruited, so that the canteen can open again in the evenings.

** Morley College (which is responsible for all adult education facilities in North Southwark and North Lambeth) is to be pressed to ensure that it commits a larger proportion of its resources to this Centre, to ensure that North Southwark gets the adult education facilities that it needs, and to ensure that it takes steps to find out what those needs are.

** Morley College is at present saying that people in North Southwark don't seem to want very much of what is on offer. We want to know whether this is true, and if it is, whether it is because the right things are not being offered, or not in the right place, or what.

** Local residents are urged to make suggestions for classes, courses, workshops or events which they would like to see put on (either at the Centre or anywhere else in North Southwark) which are not currently being provided. The

Forum will then put its weight behind making sure that they are provided.

If you want to know more about the Community Education Forum, or if you want to play a part in ensuring that adult education in SEL meets LOCAL needs, come along to the next meeting, or get in touch (for details, see the other article on this page).

Improving local services

Earlier this year, local residents and community groups formed a COMMUNITY EDUCATION FORUM to look at adult education resources in the North Lambeth and North Southwark area. We want to find out what courses, workshops, one-off events, festivals etc. LOCAL people would like to see on offer. It is then our job to ensure that Morley College or someone meets this local demand.

YOU can help us do this job properly. Firstly you can let us know if you or any local group would like a course or a workshop put on. Also let us know what you think of the courses already run by Morley College. Did you have difficulty getting in to them? Are they held at the right times or in the right places? Are you satisfied with the creche and canteen facilities available? Was the course good, or could changes

be made? By giving us this feedback you can help us help Morley College offer a better service to local people.

But there is another way you can help us. You can become a member of the Community Education Forum. Every resident of North Southwark and North Lambeth is entitled to join, and you should also encourage local community groups to take on group membership. There is no charge, either for individuals or group membership, and you will be invited to occasional general meetings to discuss issues such as the future of John Harvard Centre, and to elect a committee to carry out the more detailed work of the Forum.

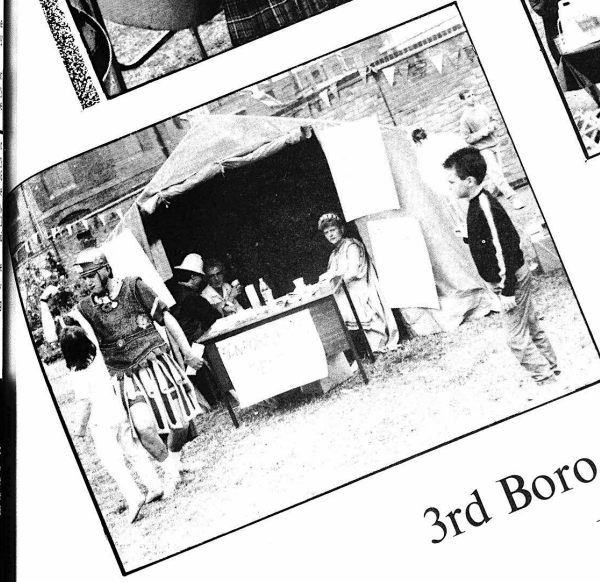
You can contact the Community Education Forum by writing to:

The Community Education Forum Committee, c/o Morley College, 61 Westminster Bridge Road, London SE1.

or by ringing up Cass Keib (the two paid community education workers) on 8501. Ask for details of the next meetings of the Forum and a copy of the annual Report which is being printed at the moment.

Or just come along to the next meeting of the Forum. Community Education Building, King Edward Walk, SE1 Tuesday 18th November

7pm



3rd Boro Festival
July '86

CLASSES ALREADY ON OFFER AT JOHN HARVARD

MONDAY
Ballroom Dancing (Beginners)
Class for beginners, provides a sound grounding in all aspects of Ballroom and Latin American styles.
7pm - 9pm.
Emergency resuscitation
Three classes only: Nov. 17, Nov 24, Dec 1.
Britain is top of the league table for deaths by heart failure. These classes will follow the six BBC TV programmes to be screened from Oct. 12.
6.30pm - 8.30pm.
TUESDAY
Making clothes
Fed up with ill-fitting, badly made shop-bought clothes? Learn how to make up your own fabrics to your own choice in a friendly but instructive atmosphere. All levels of ability welcome.
6.00pm - 8.00pm.
Fitness training
A class for people who would like to get fitter through general fitness exercises adapted to the needs

of the individual.
6.00pm - 8.00pm.
Aikido for Beginners
Aikido is a system stemming from some of the oldest martial traditions of Japan. Self-awareness, mental and physical co-ordination, Aikido weaponry, health and fitness are but a few of its benefits.
7.00pm - 8.30pm.
Car Maintenance workshop
7.00pm - 9.00pm.
Woodwork workshop
7.00pm - 9.00pm
Spanish Conversation (intermediate)
Lunchtime class
12.30pm - 2.00pm.
Piano for beginners
Afternoon class
3.45pm - 5.45pm
Piano Second Stage
5.45pm - 7.45pm
Piano for beginners
Evening class

7.45pm - 9.45pm.
WEDNESDAY
Car Maintenance for beginners
6.00pm - 7.30pm
or
7.45pm - 9.15pm
Woodwork workshop
7.00pm - 9.00pm
Judo
Judo is an effective form of self-defence as well as a sport. It can be practised by people of all ages and levels, and provides opportunities for development of general fitness.
7.30pm - 9.30pm
Karate
Karate is a martial art which offers strenuous exercise as well as developing self-discipline. The class caters for both beginners and more advanced students.
7.00pm - 9.00pm
ALSO ON WEDNESDAY
at
BOROUGH COMMUNITY CENTRE 56 Southwark Bridge Road

Keep Fit to Music
These classes use aerobic exercises to tone up the body, increase mobility, endurance and general fitness. They are suitable for all ages and abilities.
5.30pm - 7.00pm
Craft workshop
Come and enjoy making useful household articles and easy toys.
THURSDAY
at
JOHN HARVARD CENTRE
French Workshop
Lunchtime class
12.00 - 2.00pm.
Enrolment
There is a special priority enrolment day for residents of SE1 and SE11 on Thursday 11th September at the main Morley College building, 61 Westminster Bridge Road.
1.30pm - 3pm
5.30pm - 7pm
At John Harvard there shouldn't be any problem for local people wanting to join a class and you can just turn up on the night at the Centre in the week beginning 22nd September.

LETTERS

Dear SE1
ARCHBISHOPS PARK
I am a local resident in Lambeth having lived there all my life.
I have noticed a big change in Lambeth since the GLC was abolished. Being a retired pensioner I use my local park which is Archbishops Park which has deteriorated to a low level. You cannot be very comfortable when you have cricket and football around you all the time. They were not allowed when the GLC was in force.
Now I would like to let you know that three of their staff were made redundant. They are sadly missed. Lambeth Council have taken on a dozen people which I think is overstuffed. They are supposed to keep the park tidy but they don't do a stroke of work. That's not right for

people who pay rates. This wants investigating at once. Send a representative to see for yourself.
Mrs Smith
Dear SE1
TUBE STATION LIFT DELAYS
The last Bishop's Ward Labour Party meeting asked me to find out how long the lifts at Lambeth North Tube Station would be out of action and to see if it were possible to speed things up.
On investigating, I was concerned to discover that the problem is going to last 18 months to 2 years. It was even more shocking to discover that the problem is not even necessary. London Transport used to renew one lift at a time, so one was working while the other was out of action. Since then,

government legislation has required that maintenance on lifts be put out to tender. Consideration of the needs of users has declined and in a lot of stations (including the Borough as well as Lambeth North) both lifts are out of use and are being slowly renewed.
Since London Transport is now no longer democratically controlled (it used to be controlled by the GLC) it is difficult for elected councillors to affect what London Transport do. However, the Chair of Lambeth Public Services (John Davies) has promised that he will do everything he can and will be raising the matter at the next Lambeth/LT meeting.
Users of these tube stations can express their own views by writing to:
Dr Ridley
Director of London Underground

55 Broadway
London SW1 HOHD
Cllr Jenny Stiles
Dear SE1
THANKS COLOMBO STREET
May I through your newspaper say a very sincere word of thanks to all those who organised our recent coach trip from Colombo St Centre to Eastbourne.
It was truly a wonderful day's outing. We were driven there and back by a very careful driver through the beautiful English countryside and had a nice long stay at the seaside.
With renewed thanks and very best wishes to the Colombo St Centre and 'all who dwell there-in.'
Mr F Kyle

Lambeth public services

For all enquiries about the services listed below, please contact:

Directorate of Civil Engineering & Public Services
George West House
2 Clapham Common North Side
London SW4 0QN

For all the services listed below, ring 720 2177, then ask for the extension.

ACCIDENTS: Dangerous paving, potholes, etc., Ext 203

ABANDONED VEHICLES: Ext 203

BUILDING RUBBLE AND GARDEN REFUSE: Free service for loan of skips, but there is a wait
Ext 204

CEMETERY:
TEL: 672 6342

CREMATORIUM:
TEL: 672 1390

CRAZY PAVING: You can buy broken paving stones from the council at reasonable prices
Ext 222

DRAINS: Unblocking private drains, there is a charge
Ext 207

DUSTMEN: If your dustman misses you out, ring
Ext 201

FREE COLLECTION SERVICES: All items of furniture, carpets, house-hold equipment, etc collected free of charge. For an application

form, ring
Ext 205

GENERAL COMPLAINTS & ENQUIRIES: Anything not listed here
Ext 239 or 240

GULLIES: You can report blocked street drains to have them cleared
Ext 201

LAUNDRY:
TEL: 735 4301

MOT VEHICLE TEST: To make an appointment for a MOT Vehicle Test at the Council's Shakespeare Depot
TEL: 274 8223

PARKING PERMITS: Applications for residents parking permits
Ext 283

STREETS: If there is glass or oil on the road, contact
Ext 201

useful telephone numbers

STREET LIGHTING: If you see a street light that is not working, report it on
TEL: 622 1640

TREES: To report trees, shrubs, etc overhanging the public highway
Ext 292

UNWANTED VEHICLES: If your car has reached the end, you can have it removed free of charge
Ext 203

Southwark Talking Newspaper



Talking newspapers for the blind have increased in popularity throughout the country over the last decade or so. The Southwark Talking Newspaper Association

launched the first edition of 'Southwark Talking Newspaper' in 1979. The first editor was totally blind. He and his colleagues issued free every fortnight to blind listeners a 60 minute cassette containing local news and views. It has since been extended to 90 minutes.

The aim of the paper is to keep the visually handicapped in Southwark informed about news, views and events in their locality. Most of the committee which runs the talking newspaper are visually handicapped themselves. Many blind people find that this information allows them to converse more easily with their sighted neighbours and it has even opened up new friendships for some.

Student volunteers at Morley College sift through the local press and read the news, views and information

of concern to Southwark residents onto one side of the tape. If there is room, a brief TV guide is included. On the other side is a magazine which includes recipes, a shopping guide, books and cassettes, horoscopes and interviews. This section is put together by the present Editor, a totally blind piano-tuner, in his own home. The final editing and copying is done at Morley and the copies are dispatched every 10 weeks on a Friday to listeners throughout the borough.

Registered blind and partially sighted people can apply to the Southwark Talking Newspaper Association for the loan of a cassette recorder. The Association is a registered charity and relies on donations from the public.

If you would like further information on the above Association, please telephone either Mrs B Etherington (Secretary/Coordinator) on 639 8696 or Mr M Pearson (Chairman) on 703 7578.

What a week!
church comes to the party with a week of activities for children



"My mum's a carpenter", said one little girl as she hammered the final nail into the house she had built. Meanwhile all around children were gluing and sticking, singing songs, listening to stories, dressing up and enjoying themselves.

The children were taking part in a week long playscheme organised by Deaconess Penny Casemore. Proving that the church is not just a building we use once a week, she had pushed back all the pews in St Andrews Church and arranged the space for the children to play. Penny raised the money for the week's activities from ILEA and then scoured London for wood, felt, boxes and other materials for the children to use.

With several helpers, Penny had organised various activities for 5-11 year olds including a trip to Vauxhall City Farm, a day trip to Margate and a theatre performance by Upstream Children's Theatre.

The week finished with a barbecue at the adventure playground, enjoyed by children and parents alike. As one little girl said when asked if she had enjoyed the week, "I wish it could go on forever."

Congratulations to Deaconess Casemore for organising the playscheme and to all those who made it possible. Waterloo needs all the childcare provision it can get, so let's hope they'll be back next year.

MORLEY Adult Education COLLEGE

61, Westminster Bridge Road,
London S.E.1 7HT Tel. 928 - 8501
Crèche & Playgroup
Facilities Available



All enrolments at Main Building during Enrolment Week.

If you live in S.E.1 or S.E.11 you can enrol early on
THURSDAY 11th SEPTEMBER FROM 1-30 TO 3-00 AND 5-30 TO 7-00 *unless you have to see a tutor.*

If you live or work in Inner London* you can enrol between 15th and 18th September at the following times:

MONDAY	15th SEPTEMBER	FROM 12-30 TO 2-00 AND 4-30 TO 8-00
TUESDAY	16th SEPTEMBER	FROM 12-30 TO 2-00 AND 4-30 TO 8-00
WEDNESDAY	17th SEPTEMBER	FROM 5-30 TO 8-00
THURSDAY	18th SEPTEMBER	FROM 5-30 TO 8-00

Enrolment Week

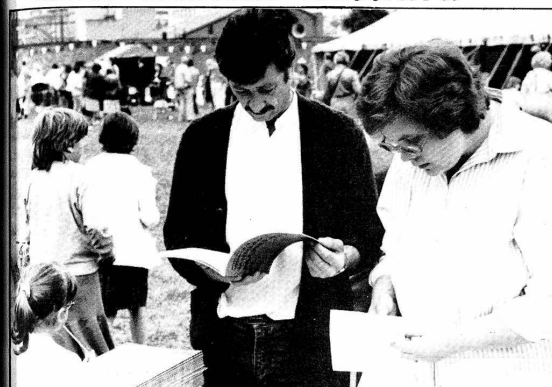
If you cannot afford the fees, please ask for advice, we may be able to help.

REDUCTIONS

If you live in Inner London and come within the following categories you are entitled to a reduction and need pay only £1 for any number of classes within the ILEA:

- if you are aged 60 and over, or under 18;
- if you are in receipt of family income supplement, invalidity benefit, supplementary benefit or unemployment benefit (or dependent on another member of the family who is)*
- if you are attending classes for deaf, blind, or mentally handicapped (under 18, no fee)
- if you are enrolling in literacy (including mother-tongue/heritage), basic education, English as a second language and linked-skill courses directly concerned with special needs;
- if you are enrolling in family classes.

*You should bring proof of your entitlement to the reduction (Payment Book, Forms BR464 and UB40).



Did you receive your copy of the Morley prospectus through the post? There will be FREE "taster" courses during Enrolment Week to help you find the right course. Just drop-in or phone 928 8501 for more details.

JOIN US!

...and get out and meet people



ABOVE: Susan Fey, our new Principal, will introduce herself in the October issue of SEI.

WORD PROCESSING
and
COMPUTER APPLICATIONS
for
TYPISTS

Tuesdays & Thursdays
from 10.30 to 3.30
for 20 weeks

Enrolling Tuesday,
15th September from
9.00am to 1.00pm

LONDON COLLEGE OF PRINTING
Elephant & Castle
Enquiries: 735 9100 x 342



FLATS FOR LADIES

EDWARD EDWARDS' HOUSE

Nicholson Street
Blackfriars Road, SE1

Edward Edwards' House is a modern complex of thirty eight one-person flats, arranged around a central garden. Each flat has a large bed-sitting room, kitchen and bathroom. They are rent and rates free, and the central heating is also free of charge.

A Housekeeper is in residence, and there is a communal lounge with Dinner Club facilities.

If you would like to be considered for one of these flats, and can answer yes to the following,

Have you lived in the Borough of Southwark for at least five years

Are you over 60 years of age, and of good character and limited means

Are you in good health and able to look after yourself

please ask for an application form from:

The Clerk to the Trustees
Christchurch United Charities
Municipal Offices
151/153 Walworth Road
London SE17 1RY

Christchurch United Charities

WATERLOO FESTIVAL

a celebration of cultures

A Waterloo Festival is being organised this year to take place in October - but with a very different style to previous years.

Instead of a one day street festival, there will be eleven day and evening events spread throughout the month in halls around Waterloo. The theme is the celebration of

the many different cultures of people living in the area giving everyone a chance to enjoy their own and sample others.

Most of the events will be free though some will make a small charge for food or to raise funds for charity. Full details will be published next month in **SEL**, but put these date in your diary:

Bangladeshi Music and Dance - Friday 3rd October
Afro-Caribbean Fashion, Food and Music - Saturday 4th
Asian Folf Dance and Music - Saturday 4th
Mapuche (South American) poetry, slides, music - Friday 10th
Southwark Muslim Youth, Dance - Saturday 11th
South American music, food, exhibition - Saturday 18th
Irish Music and speakers - Sunday 19th
Chines Theatre and music - Sunday 19th
Cockney Songs and food - Friday 24th
Children's Theatre - 20th, 21st, 22nd
Women's Day Workshops, music, food - Saturday 25th

There will be a free creche at every event. The Festival is being co-ordinated by the Association of Waterloo groups with each event being organised by a separate group. Lambeth Council has given £4500 to sponsor the Festival.

Dogs banned from play areas on Southwark's estates

Southwark's Housing Committee has decided to ban dogs from children's play areas on all of its estates throughout the borough. This decision was taken at its meeting in June and came into effect immediately.

At the same time, the Committee decided that where there were no children's play areas on estates, Housing Department officers would consult with Tenants Associations on the best place to set up such areas.

Globe gobbles Bankside housing site

In an out of court settlement at the end of June Mr Justice Harman announced that Southwark Council will have to make available part of an important East Bankside site to the Shakespeare Globe Trust - and at a peppercorn rent into the bargain.

It might be a bargain for the Trust, but it's certainly not one for local people in housing need. With over 4,500 on the waiting list in Bermondsey alone, Southwark cannot afford to lose housing sites like this.

With the takeover of other housing sites on the riverside by the LDDC further east, this site is effectively the last riverside site in North Southwark which could be developed for homes to rent by the Council.

As a result of the settlement, which also meant that Southwark had to pay £7.2m to the owners of part of the site, public money is being used to subsidise, by the absence of a market rent, a project which will benefit wealthy tourists, yet make life very unpleasant for local residents. Coaches and cars will be choking the streets if the theatre goes ahead, local shops will be under pressure to convert into wine bars and souvenir parlours.

According to the agreement, the Trust has to raise the £12m for the project and get the building underway within 5 years or the site goes back to Southwark.

There is of course no guarantee that the theatre will be built. In June this year it was thought that only 14% of the money needed was firmly pledged, and that after 17 years of fund raising and campaigning for the theatre! What must be certain is that no more public money should be sucked down this particular drain.

A planning application for two theatres, a pub and 17 flats has just been submitted to Southwark Council. Members of the local community who have consistently argued for this site to be brought into housing use will be objecting to the scheme. Anyone wishing to add their objections should write to the Borough Planner at 30-32 Peckham Rd SE5, stating that the site should be reserved for housing which meets local need.

SEL newspaper

SEL newspaper is produced for residents of Waterloo and North Southwark by people living and working locally. We welcome your letters, news, photos and other contributions. SEL particularly welcomes contributions from the area's ethnic communities.

NEXT COPY DATE

Copy date for the next issue of SEL is Wed 24th September. All contributions should be sent to 56 Southwark Bridge Road, SEL OAS.

SEL AVAILABLE AT

If you want to receive your copy of SEL regularly, it is available from the Waterloo Action Centre, 14 Baylis Rd or from the Borough Community Centre at 56 Southwark Bridge Road.

ADVERTISING IN SEL

SEL newspaper is run on a tight budget and largely financed by advertisements. If you would like to advertise your activities, events, jumble sales, products, services or whatever, you will find our rates very reasonable. To find out more about advertising in SEL ring Gerry on 928 0711.

SUBSCRIPTIONS

Subscriber rates to SEL newspaper are £5 a year for individuals and £15 for institutions. Cheques should be made payable to SEL newspaper and sent to 56 Southwark Bridge Road, SEL OAS.

SEL EDITORIAL GROUP

Mary Dymmond, John Howes, Dave Scott, Chris Smith, Keib Thomas, G Vignola, Paul Wheeler

Jobs less

The long term future in Southwark of one of the borough's largest employers seems uncertain after further job losses. Over 100 jobs were lost at Babcock Power in Great Dover Street last year, bringing the workforce down to 780. Now a further 83 redundancies have been announced, with possibly up to 100 further jobs being lost through 'natural wastage'.

The reason for the job losses is the fall in demand for Babcock's products - its designs and manufactured parts for power stations. Babcock will give no guarantees that there will be no further job losses next year or the following year.

14 of those issued with redundancy notices are members of the Amalgamated Engineering Union (TASS). The union is seeking withdrawal of the notices, and redeployment or re-training for its members.

Southwark Trade Union News