

# SEI

ISSUE 49 FEBRUARY 1987 FREE COPY

## THE COLD TRUTH

Goodwill and joy of the Christmas and New Year festivities can be a thin covering the onslaught of a period of misery for pensioners and others who have to survive on low or inadequate incomes. No sooner Christmas over and the weather really sets in. Because of the high cost of heating their homes, many go without and many pay with their health. Far more elderly people die during the winter months than the rest of the year: 40,000 during a mild winter and up to 80,000 during a harsh winter, due to related illnesses such as hypothermia, bronchial pneumonia, etc.

At least many more elderly people die in Britain due to cold than in other European countries. For instance, more elderly people can be expected to die during winter in Britain whereas the figure for Sweden is only 8%.

### HEATING

Something needs to be done if we are to reduce the tide of deaths due to the cold which could be avoided. And a lot more than the occasional extra £5 towards heating costs that the government is prepared to pay out when the weather is exceptionally cold. There is a need for housing standards to be raised in both the public and private sectors if we are to avoid the winter deaths of people sitting in draughty and cold housing with inadequate and expensive heating. Insulation standards in public housing need to be upgraded. The same standards should also be applied to the private sector where landlords often avoid their responsibilities to maintain

a decent standard.

### HEATING

Heating is the crux of the matter. There are many who will sit in temperatures below 60F and risk danger to their health rather than experience the worry and fear of expensive heating bills. These bills can "rocket through the roof" due to heat loss because of the poor standard of housing. Not only the elderly, but also many single people and families on supplementary benefit and low wages also know the reality of cold, damp and unhealthy accommodation.

Those in need must be given all the financial assistance necessary to keep warm in winter. Many voluntary organisations concerned with the elderly, such as Age Concern, have called for the £5 a week extra heating allowance for those on supplementary benefit to be paid throughout the winter. The Government has already been obliged by the public outcry to raise the 'trigger' temperature at which the £5 is paid out. At its previous -1.5C (every day from Monday to Sunday) it was deliberately calculated to pay out only once every 7 years!

### CLAIM IT!

What help is available? Those on supplementary benefit might qualify for a heating allowance on the grounds of health or draughty accommodation. The rules to qualify are strict but you should apply if you think you might be eligible.

You may also qualify for the £5 extra towards your heating costs which has been granted



PHOTO: Shirley Grieve

Keep warm this winter!

now for 2 separate weeks, from Monday 12th January to Sunday 25th January if you are receiving supplementary or housing benefit, if you or your partner is over 65, if you getting supplementary benefit for a child under two, or if your partner or child is disabled or long-term sick. To qualify you will have to have less than £505 in savings. You can apply for up to three months after the cold week in question. £10 is now available and you should make a claim at your local DHSS office.

Paying extra for heating, however, is only a stop-gap measure. It doesn't get to grips with the problems of pensioners and others on low incomes who might need to spend the extra money on food rather than heating because they have trouble making ends meet. The DHSS should take

over payment of heating bills of those on low incomes.

You should take action on your housing situation by sending details of your draughty, damp home to your local councillor, your MP, the local press and any organisation concerned with housing in order to pressurise for change.

### PULL-OUT SUPPLEMENT INSIDE

During the cold weather it is more important than ever that people can an eye out for their elderly neighbours. The able bodied elderly also need to make sure they keep warm. Inside SEI has produced a pull-out sheet compiled from information by Age Concern on hypothermia and tips on keeping warm this winter as well as other useful information.

# SEI

Dear readers, subscribers and advertisers please note there will be no March issue of SEI newspaper.

### CLAIM IT!

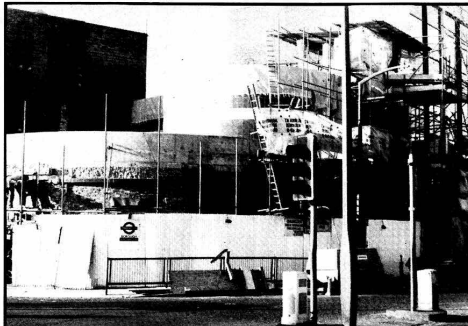
Extra £5 heating allowance: If you think you are entitled to the extra £5 a week for the cold weather for the two weeks from 12th January, fill in the form inside and send it to your local DHSS.

### SPACE FOR HIRE

Womens Groups, are you looking for a space to hold your meetings? Rockingham Estate Play Association have a community flat equipped with meeting room, creche rooms, kitchen, toilet/bathroom available for as little as £1 an hour. Use of Video and TV.

If you are interested ring Debbie on 403 6627.

## 2 Works at Borough Tube set for Summer lift-off



Readers will no doubt be wondering when on earth the improvements to Borough Tube Station will be finished. Works have been going on for nearly 18 months now with few signs that completion is just around the corner.

Apart from the inconvenience of not having any lifts, residents have to put up with the ugly scaffolding and the fact that the footpath in Marshalsea Road adjacent to the Station is only a narrow passage. This means that parents with prams have to use the other side of the road. The scaffolding also darkens this corner considerably and several women have told SE1 that they don't like to pass here at night.

SE1 spoke to a representative of London Regional Transport (LRT) who informs us that works should be completed by the Summer of 1987. When pressed he couldn't give a more specific date than that. He explained that the renewal of lifts is always a time consuming job. As well as installing new lifts, LRT is also putting in new ticket machines. These wall-mounted machines will be of two types: one type will issue tickets to the ten most popular destinations from the

station and the other type to all other destinations. The machines will give change and are designed, according to LRT, to cut down queueing time. Let's hope they're not intended to put more people out of work. This type of ticketing system will be standard on the underground by the end of 1988.

Readers will have noticed too that improvements include retiling the exterior. SE1 asked if the platforms will be cleaned up and painted; Borough Tube Station must be one of London's most unpleasant stops in which to while away the time. That question caught the LRT spokesperson on the hop, replying that it was usual in these cases to do up the platforms. Let's hope so.

Readers may also have noticed the scaffolding going up at the Bakerloo entrance to the Elephant & Castle Underground Station, that is, the entrance closest to Newington Causeway. Here, the lifts are also going to be renewed, though one of the three will always be working. Users can still use this entrance as well as the Northern Line entrance. LRT gave us a finish date of late 1989, but it's always worth hedging your bets.

## PLANNING Information

### Change of address

Would Southwark readers and residents please note that Southwark Council's Borough Development Department comprising the Planning Department, Architects Department and Borough Valuers has moved.

The address for all correspondence is as follows:

Borough Development Department  
Angel Court  
199 Borough High Street, SE1 1JA  
Telephone: 403 3322

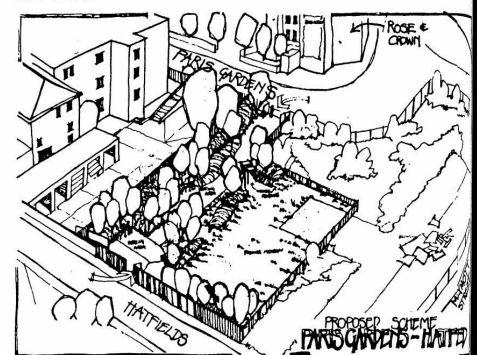
## Paris Gardens - Hatfields site to be landscaped in Spring

Part of the long vacant site off Blackfriars Road near the Colombo Street Sports and Community Centre known as Paris Gardens will soon be brought back into community use. Southwark Council is planning to create a landscaped path and garden linking Paris Gardens with Hatfields.

The site came into the hands of the Council in 1982 when property developers - MEPC - were granted planning permission for an office development on the southern end of the site. They also agreed to contribute £20,000 towards the costs of turning the site into an Open Space. The Council hopes to start work on the project in March or April.

The remaining half of the site, fronting Meymott Street, is also owned by the Council. It is designated for housing under the North Southwark Plan but because of lack of funding plans have yet reached the drawing board.

For further information about the proposed garden and path, you can contact John Davies at Southwark Planning on 403 2156.



Christmas diners at Borough Community Centre (above) at the Stones End Day Centre (below).



## Homelessness: a growing problem

1987 is International Year of Shelter for the Homeless. A public campaign launched recently in Britain aims to increase public awareness of the problems of homelessness and poor housing worldwide and to raise funds to support projects tackling these problems here and in underdeveloped countries. Below, SE1 puts homelessness and bad housing in perspective around the world, in Britain and here in our own area, and asks organisations in SE1 to tell our readers about their activities.



Throughout the world more than 100 million people have no roof over their heads whatsoever. They sleep on pavements, on vacant land and rubbish tips. Half the population of the underdeveloped countries live in slums or squatter settlements where they build their own homes out of whatever materials come to hand - packing cases, tin, rags. In

these conditions 50,000 people a day, mainly children, die of diseases which spread like wildfire through these slum settlements.

As shocking as it may seem in an advanced country like Britain in 1987, homelessness ranks with unemployment as one of the major problems facing the country. In 1986 in the UK, over 100,000 families became homeless. This figure has almost doubled since 1978. Between 1979 and 1984 the number of people living in board and lodging type accommodation - hostels, bed and breakfast, hotels - increased from 49,000 to 160,000.



These figures are only the tip of an iceberg. There is a hidden army of homeless around the country who have no home of their own, whose homes are totally substandard, or who are forced to share with family or friends. One and a quarter million people on council

waiting lists gives us a better idea of the size of the problem. One million homes are unfit for human habitation. It is estimated that £20 billion needs to be spent on our public housing stock in order to bring it up to a decent standard. Due to government policy, new build public housing has come to a virtual standstill throughout the country while half a million British building workers remain on the dole.



Government policy of starving local authorities and Housing Associations of sufficient funds to get to grips with the problem has resulted in housing sites lying derelict for years, lengthening waiting lists and the growth of homelessness. Between 1979 and 1985 the number of homes built by the public sector has fallen to one quarter of the 1975 level. The Tories are strangling the fair-rent housing sector for political motives. What makes this so ridiculous is that it costs

Project for as long as they and the project feel they need to up to the age of 21 years. Most residents are ready to live independently after 12 to 18 months. We help our residents to secure permanent accommodation in the local area.

Our resettlement programme helps residents move into their new home, advising on the connection of services, budgeting for bills, payment for rent and rates, etc. We also visit our ex-residents regularly and are available for help and advice when needed for their first year in their own home.

At present we can accommodate only 17 young people, but two new developments in the pipeline will increase this to 29. In the past year, 45 homeless young men and 67 homeless young women have contacted us for accommodation. We have had space to house only 13 of them.

BHYP is grateful to Southwark Council, London Borough Grants Unit and the Housing Corporation for our finance and to the North Lambeth Day Centre and local community groups for their encouragement and support.

### 259 Project

The 259 Project is a small hostel near to St George's Circus SE1. It offers accommodation to young homeless men between the ages of 17 and 25 together with an opportunity for residents to establish themselves in more permanent accommodation and identify long term plans and objectives.

To this end the Project organises a weekly programme of activities geared towards encouraging outside interests, self-confidence and independence skills. As such it offers one response to the problem of youth homelessness in London as a whole and Southwark in particular. Recognition of the rights of the individual whatever his circumstances is fundamental to the Project. The 259 Project is appropriate to some young men who would currently benefit from some support but unable to meet the more general needs caused by the housing shortage.

The very existence of the 259 Project, however, is an indictment of the low priority given to providing access to housing for young people as they leave home or are forced to leave home because of family circumstances. If young people were guaranteed access to decent permanent accommodation, the natural process of leaving home and setting up a new household would be an achievable goal and training for independent living could be incorporated into the normal educational process. Unfortunately, for young people in Southwark and elsewhere the reality is different....



The Manna Centre in Bermondsey was founded by Nanette French in 1982. It provides sustenance for those who are down on their luck, homeless, and whom society frequently

more to keep the homeless in temporary accommodation than it does to build new homes to house them!

In Southwark, the number of households accepted as homeless by the Council has increased nearly four times from 1982 to 1985, from 400 to 1,500 families. Hardest hit perhaps are single people who are not considered to be in priority need for housing under the Housing Act. Many hostels catering for single people in the area have closed their doors because they were substandard or infringed fire regulations without anything to take their place. In desperation, many people, particularly the young single, have been forced to squat empty flats.

Despite the difficulties, there are many organisations which offer help for the homeless. In our area, we have invited three such groups to describe their work.

shuns. It is partly funded by the Catholic Diocese of Southwark and also receives voluntary donations.

The Centre is mainly attended by men, usually around 150 a day sometimes as high as 250, where they can have a nourishing soup at midday along with tea and sandwiches. Each person is also able to use the washing facilities with soap, towels and razor provided. Clean clothes are also available many of which are donated.



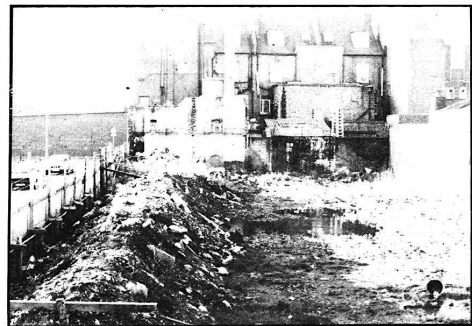
The staff philosophy is the acceptance of the homeless as they are while making available and encouraging any avenues of change they may want to make. Over the last year the Centre's involvement with the homeless has expanded with the development of the role of Fieldworker. Also much effort has been put into preparing a home to be run by the Manna Society for some of those using the Centre. This small hostel would provide 24 hour shelter.

A night time tea-run for the homeless operates from the Centre and is supported by many volunteers and various church groups which use the centre. Each night a different tea-run group goes to the railway arch at Crucifix lane near the Centre to meet a large number of people in need.

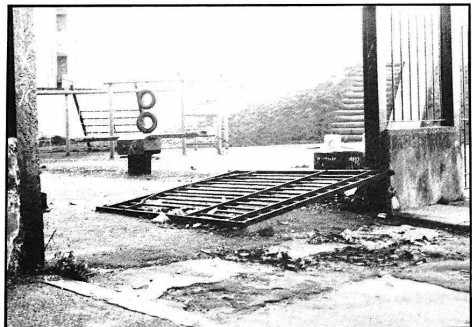




Brighton Buildings on Tower Bridge Road



A vacant, tinned up site on Leroy Street



Leroy Street Playground



The Green used as a tip

## Facelift needed

The Community Areas Policy was one of the Greater London Council's best achievements. Working closely with local community groups the GLC developed the Policy as part of its new planning policies for meeting community needs in central and inner London. The aim of Community Areas was to help stop the decline of many working class areas of inner London such as Waterloo, North Southwark, Battersea where industrial jobs were being lost as firms closed down and communities were under threat from the rapid growth of offices.

Through a variety of Community Areas Projects, the GLC was prepared to put its money where its mouth was. In North Southwark and Waterloo it spent several million pounds on projects such as the Courages site on Bankside, loaning the money for the purchase of the Coin Street sites on the South Bank, the Beomund Centre in Bermondsey and the Rockingham Estate Community Nursery at the Elephant. The money was used to build new homes with gardens at fair-rents, industrial workshops, a new community centre and a nursery.

### GLC ABOLITION

The abolition of the GLC threatened the future of many of the projects. Southwark and Lambeth Councils were able to take on some of them but responsibility for others was more ambiguous. One such project which has become a victim of the abolition of the GLC was on the Swan Mead Harold and Creasey Estates off Tower Bridge Road and Old Kent Road. Here a grant was given for extensive environmental improvements to create The Green and Leroy Street Playground.

While Southwark architects were involved in the landscaping of the project, the Council said at the time that it did not have the resources to maintain the two sites. The Swan Mead, Harold and Creasey Community Association then agreed a rota of members to make sure these areas were properly maintained. Despite the efforts of a number of tenants - two of the most active of whom have now left the estate - SE1 was told that this arrangement had broken down due to the disbandment of the Community Association.

Most of the Green is now littered with rubbish and a part of it has effectively become a tip. The trees and shrubs have grown wild, weeds have taken over and some of the fencing is broken. In short, the Green has been abandoned. The Leroy Street Playground is in an even worse state. It has been completely vandalised with part of the shelter burnt out and covered with graffiti, the swings rusting and their seats slashed, and one of the iron gates has been pulled down. The level of maintenance needed on these sites is too great for voluntary efforts and needs the involvement of the Council's Parks Department.

### VACANT SITES

This area of North Southwark is also suffering other problems. There are a number of vacant sites which are tinned up, in Leroy Street, for instance, and give the area a run down look. The

grassed over space on the corner of Tower Bridge Road and Old Kent Road is a barren waste. A number of these sites are earmarked for Open Space in the Council's North Southwark Plan. The Planning Department itself is presently working on a review of vacant sites in the area and we hope in the next issue of SE1 to hear what the proposals are for tidying them up and bringing them back into public use. Another of the area's problems is parking on the streets of the estate's commuters. The former Tower Bridge Road Community Action Team, consisting of council planners and local residents developed proposals last year for a new system of traffic management which would have introduced a one-way loop. There was also the intention to improve the bad surface qualities in and around the estate. These proposals were sent to the Borough Engineer and nothing more was heard of them.

### BRIGHTON BUILDINGS

One of the biggest disappointments is the length of time taken to get the rehabilitation of Brighton Buildings, Tower Bridge Road in the middle of the shopping area off the ground. The residents we spoke to were concerned not only that this building had become an eyesore but also that it should be brought quickly into housing use to bring people back to the area. The mixed development consisting of the upper floors of Brighton Buildings and the conversion of the ground floor to new shops has been on the drawing board for over 18 months. The scheme will be managed by a Cooperative and the money will come from Southwark Council. Tenders went out last March last year but it was not until Christmas eve that Southwark finally submitted the tender to the Department of the Environment for approval. The builder has agreed to hold his price until the end of February with luck, according to CHS - the Coop handling development - builders should be on site in March.

## Waterloo Chunnel Terminal - time to petition the Lords

Residents are moving quickly on the Channel Tunnel Bill. The House of Commons has almost finished discussing it and no major changes have been made which remove the threat of a Waterloo Terminal. So local people now have to press their case to the House of Lords where the Bill will go in February.

In order to put views to a Lords Select Committee, it will again be necessary to submit a parliamentary petition. So this means local groups and individuals will need to put their petitions in by mid-February. Again the democratic right to be heard is being limited by government-imposed tight deadlines. Opponents cannot object to the principle of the Tunnel but insist that the Waterloo Terminal be removed from the Bill. This is our last chance

to object to Parliament. Many people missed the boat last time and we must make sure that it doesn't happen again.

It is clear that Waterloo community's arguments against a Waterloo terminal and for the dispersal of Chunnel freight and passenger traffic are getting through to a wider public. A nationwide conference in Birmingham of local authority representatives agreed a joint campaign to amend the Bill in the Lords. They also agreed that the terminal should not be at Waterloo.

For more information and help in getting your petition in please contact Waterloo Community Development group, 99 Upper Ground, SE1 or ring Ross or Sally on 633 9291, or Baylis Action Centre, 14 Baylis Road.

## Community Care - more resources are needed

Our local Health Authority has a ten-year plan to rationalise health services in the north of the borough. Part of this plan is to inject more money into care in the community. SE1 has a local District Nurse, Brian Ferman, to tell us how he sees community care on the ground.

Lewisham & North Southwark Health Authority are staggering from one crisis to another. There are now over 7000 patients on the waiting list and Guy's is overspent by £276,000 this financial year. Wards are being closed at Lewisham Hospital and the 240 bed New Cross Hospital will close in April this year. As if this wasn't enough, health chiefs are pondering a further list of 16 options for further cuts.

In the present climate of cuts to services, community care is being embraced enthusiastically by our health authority. With the proposed closure of three local hospitals the intention is to put patients into the 'community'. But what is community care?

Community health care in Southwark is set against a background of large numbers of elderly people living alone often in inadequate housing; many elderly people live as prisoners in tower blocks afraid to open their front doors. Frequently too they have no family to look after them.

Present the community services are extremely stretched - home help services are being curtailed and hours shortened. With

Southwark council facing ratecapping again this coming financial year, sheltered housing schemes and meals on wheels will suffer. Even now there is a waiting list for aids to be fitted in homes.



District nurses have increased workloads and are looking after people who have been discharged from hospital too soon because of the shortage of beds. We know of many people who have been waiting a very long time in extreme discomfort for even the simplest of operations, like cataracts.

The voluntary services are overburdened with all the pressures, coping with tasks that should be carried out by health and social services.

The Health Authority says it needs an injection of £60 million to expand the community care services as it would like. But we must ask them if they seriously believe that this money will be made available at a time of continuing cutbacks by the government?

Community care is far more preferable than locking up the elderly, handicapped and mentally frail in huge institutions. But if it is to be implemented properly it will cost far more than even the Authority is hoping for. Otherwise community care will become a cheap option, the same as dumping people without providing them with any support.

## PLANNING FOR UNDER-5'S

"Planning for the Under-5's" is the latest publication of Southwark Council's Planning Division. It was produced by them together with women from the Brompton Childminders Support Group and the Willowbrook Urban Studies Centre.

The booklet contains photographs and text written by parents and carers from the Childminders Support group. The stories came from their own experience and show many of the obstacles people with young children encounter every day.

The booklet also shows how Southwark's Planning Division is trying to improve facilities and the design of new buildings to take account of the needs of people with young children. The Council has approved planning policies which promote these aspects of design and the Planning Department has produced

a booklet called "Design Guidelines on Access to Buildings", available from the address below.

The Planning Division would like to hear your views and comments about "Planning for the Under-5's". Two planning officers, Joanna Lloyd and Stellanette Starcke are happy to come and talk to you or your group about the work of the Planning Division, and show how women can become more involved and have a say in what is happening in the borough.

If you want a copy of the booklet or to talk more about it, ring or write to Joanna or Stellanette as follows: Borough Development Dept Planning Division Angel Court 199 Borough High Street SE1 1JA Tel: 403 3322 exts 2192 & 2189

## THE MORLEY COLUMN

The weather has meant that it has not been a very easy start to the New Year for Morley. I am glad to say that we have been able to run most of our classes as usual. Lillian Baylis School had to close because there was no heating - apologies to who have missed their classes there. Gerridge Street Branch had to close for one evening - apologies to students who use that building. Some classes had to be cancelled because tutors could not get there. Although we do try to contact every student to save wasted journeys, so apologies if you came only to find your class cancelled. Thank you to all those students who came in spite of the terrible conditions.

On a brighter note-some news about an interesting course. Jenny Thomas, who organises

the Physical Education at Morley is running a one-day preparatory course for people who would like to become Weight Training Instructors. This will be on March 7th and can lead on to The British Amateur Weightlifting Association Leaders Award to be held on March 14th and 21st. Women are particularly welcome.

While on the subject of Weight Training, you may be interested to know that Morley now has a fully equipped Conditioning Gym. There are mixed and women only courses and we have women tutors. Sessions are held both during the day and in the evenings. If you want more information about the Instructor's course or the regular weight training classes, leave a message for Jenny Thomas at Morley on 928 8501.

SUSAN FEY

## MORLEY COLLEGE

### CANTEEN ASSISTANT

MORLEY COLLEGE  
Lillian Baylis Branch  
Lollard St  
(off Lambeth Walk, SE11)

requires a  
Part-time Canteen Assistant

fourteen and a half hours a week, 30 weeks of the year to prepare light snacks, tea coffee. Three lunch times a week (Tues, Wed Thurs), four evenings a week (Mon to Thurs) at £2.80 per hour.

If you are interested, please contact Amanda Wooley or Yvonne Plows on 587 1826.

## CLASSES AT

### LILLIAN BAYLIS

It's not too late to join in the following classes at Lillian Baylis Branch. Drop in and see the tutor and sit in on the first class for free. If you want more information ring 587 1826.

**Family Workshop**  
Wed 10.30 - 12.30 & 1 - 3pm  
**Dressmaking in Bengali**  
Wednesday 1 - 3pm  
**Womens Assertion Training**  
Tues 10 - 12pm  
**Keep fit for Women**  
Mon 6.30 - 8 .00pm  
**Photography**  
Thurs 10 - 1pm and 2 - 4pm  
**Photography for Work**  
For the unemployed only, £1  
Fri 10 - 1pm & 2 - 4pm

## LETTERS

Dear SE1

## LAMBETH WORTH DEFENDING?

Certainly NOT the Dept of Environmental Health where bureaucracy has for over two years blocked the provision of accommodation for young people and wasted thousands of pounds earmarked to meet this great need.

It is an almost unbelievable story. One officer condemns what another has approved. Mistakes are made but not admitted. Grants awarded but not paid in spite of promises. Inappropriate byelaws applied. Incredible delays in answering questions or taking decisions.

Nine months ago an appeal was made to the Director of the Department - so far without success. Numerous letters have been written to Councillors (including Chairs of Housing and Consumer Complaints) also Lambeth Chief Executive and Stuart Holland MP.

Lambeth is the worst Council I have ever had to deal with. They seem to care only about face-saving red tape - not about people.

Name &amp; Address supplied

Dear SE1

## STREET LIGHTING

I am sending you a copy of a letter I sent to the Public Works department of Southwark Council on behalf of Winchester Buildings tenants asking for improved street lighting in our area.

Dear Mr Burrell

Following our telephone conversation, I got in touch with the Bermondsey Lighting Campaign as you suggested and I am dictating this letter to

them.

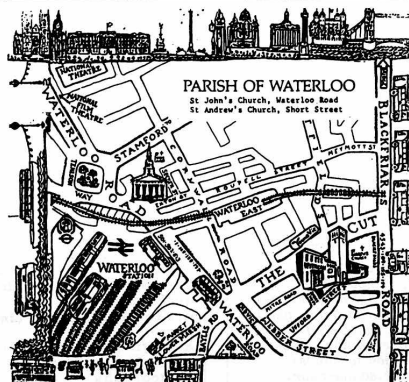
I am writing on behalf of Winchester Building tenants to complain about the poor street lighting in our area. As you can see by the enclosed letter, a number of the tenants have signed a petition requesting better street lighting. The length of Copperfield Street is badly lit. Many residents of Winchester Buildings, especially the women, avoid using Copperfield Street, using Union Street instead. While the Post Office parcels depot provides extra lighting in Copperfield Street, at week-ends the street is dead and we don't like using it. We don't allow our children to play in the street after 4.30pm during the winter.

There are four primary schools in the area, St Joseph's, St Saviour's and St Mary Overie, Charles Dickens and Friars Schools. Children often return home from schools unaccompanied and the streets are poorly lit. With the rise in assaults on children we think it is imperative that the streets are brighter.

In Great Suffolk Street, outside Victoria Buildings, an elderly handicapped lady was badly beaten and mugged last year. The street has only three lamp posts on the left hand side. The poor street lighting is of growing concern to the mothers with children and also to the elderly some of whom are so scared that they don't like to open the doors of their homes let alone go out.

We hope you can bring this letter to the attention of your head of Department and to councillors on the Public Services Committee.

Maureen Hanafin



The Parish of Waterloo is the Church of England the Waterloo area.

All are welcome to any of our activities.  
Parish office telephone: 633 9819

## Southwark unveils employment initiative



Southwark Council has organised a conference at the end of January which will bring together community organisations, unions and employers in the borough to discuss the job creation in Southwark.

The conference follows the Council's publication of 'A Working Community', a document detailing its proposals to create up to 6,000 new jobs in Southwark over a two year period in the public and private sectors of industry. Currently there are 26,000 people unemployed in Southwark.

4,400 jobs would be created in various council departments. The Council is at pains to point out that these new jobs would be blue collar jobs and not Town Hall paper shufflers. This would mean that many locally unemployed would be taken off the dole queues helping to provide the services the borough needs - more workers employed in house building and repair, in the public works department, sport and leisure, more home helps and social services workers.

The Council argues that it costs more to keep people on the dole than it does to buy them a job. With their wages

the newly employed will spend more on goods and services in the borough, helping to create more jobs in the private sector.

That's the theory anyway. What's missing at present is the money to carry out the scheme. The Council estimates that the average cost of each job would be £9,000 spread over two years. Before it was implemented the scheme would need central government funds, unlikely to be forthcoming under the present regime. On this point Councillor John Lauder, Chairman of the council's Jobs & Industry Committee said that "people who are unemployed in the borough need to get back to work as soon as possible. Local authorities can boost the local economy and provide real jobs as long as changes are made at the national level to enable us to do so."

## United St. Saviour's Charities

### Flats for retired people of North Southwark

From time to time we have vacancies for retired people who live in North Southwark, at our attractive sheltered housing scheme at St. Saviour's College, Hamilton Road, West Norwood, and one of them might suit you.

To be eligible, applicants must have been resident for at least three years in the North Southwark catchment area, should be of limited means, of good health and able to look after themselves.

Residents, who are known as "the Collegians", live rent free, pay no rates and are provided with central heating and hot water at no charge, though they must pay for extra heating.

If you would like more information about applying for a flat or you know of someone who might be eligible and you would like to put them in touch, please contact:

The Clerk to the Wardens  
United St. Saviour's Charities  
8 Southwark Street  
London SE1 1TL  
Telephone: 407 5961



## Beormund

### FEBRUARY 1987

#### Join in our regular activities now!

**KEEP-FIT:** Monday 7 - 8pm and Wednesday 12 - 1pm (Creche available)

**ADVANCED COOKERY (AN INTRODUCTION):** Friday 10am - 12pm (Creche)

**OLD TIME DANCE:** Wednesday 1.30 - 3.30pm

**MUSIC WORKSHOP:** Wednesday 7 - 9pm

**MOTHERS & TODDLERS GROUP:** Tuesdays and Thursdays 1 - 3pm

**INSET EMPLOYMENT & TRAINING ADVICE:** Wednesdays 1 - 3pm *Fortnightly*

**BERMONDSEY PENSIONERS ACTION GROUP:** First Wednesday of every month 10am - 1pm

**AFTER SCHOOL CLUB:** For children of working parents Mon - Thurs 3.30 - 5.30pm

**LABOUR PARTY ADVICE SURGERY:** 3rd Thursday of every month 10 - 11am

**DRAMA WORKSHOP:** Sunday 4 - 7pm

**BASIC EDUCATION CLASSES:** Help with reading, writing and English as a second language  
Four sessions each week, contact the Centre for details

\*\*\*\*\* COMING VERY SOON! \*\*\*\*\*

\* Five weekly photography classes \* Art and Drawing \* Bingo

\* Childrens Dance and Drama \* Sound Studio Operators Course \* Daily Cafe

\*\* We have a small music room available for hire to local groups and individuals with facilities to make a demo tape \*\*

Please call into the Centre for information on any of the above

177 Abbey Street, SE1 Tel: 237 9313

## DANCE PROJECT COMPANY

Are you interested in CONTEMPORARY DANCE? The Dance Project is eager to work with people from the community at all ages and levels, and adapt to special needs, for example, the handicapped.

We will introduce you to dance as an interest or help you use dance in your field - through workshops, demonstrations linked to performance. We also specialise in teaching choreography and improvisation. Joint project suggestions also welcome. For further ring 735 5142.



## Rockingham Children's Party



The Rockingham Estate Play Association held their annual Children's Party on January 4th.

About 100 children were there between the ages of one and fourteen, who live on the Rockingham Estate and surrounding areas.

The party was highlighted by the arrival of Dot and Peb who entertained everybody alike, children, parents and those who helped to put the party on.

The Management would like to thank everyone who participated and helped at the occasion.

## Estate lighting improvements in Lambeth

Council tenants may soon have less fear of the dark thanks to a major programme to improve lighting on Council housing estates in Lambeth.

£500,000 has been earmarked for the work on 33 housing estates throughout the borough. Improvements began in December and should be completed by September this year. The work means that there will now be more lamp-posts on estate roads, and vandal-resistant light-fittings on balconies and stairwells.

The Council's Direct Labour force will carry out the work with some assistance from contractors.

Women and elderly people are likely to benefit from the schemes, which are targeted at dimly lit estates where residents are most prone to accidents and night time attacks. The lighting schemes have been welcomed by Tenants Associations around the borough who have repeatedly put better lighting near the top of their priorities list.

Estates to benefit include Tamsell, Ethlered Estate, Vauxhall Gardens, Cottoing Close and South Lambeth Estate.

## South Bank sleaze

Massive luxury housing schemes are being proposed for the two vacant sites beside the southern end of Vauxhall Bridge. An appeal has already been lodged by Regalian over its 300 home scheme for the "Green Giant" site on the east of the bridge because of Lambeth's failure to determine the application in the statutory eight week period.

Lambeth is likely to be opposing the scheme at the inquiry - luxury housing doesn't meet local need, and the schemes conflict with the local planning policy for the sites which is for employment related uses and access to the river.

Meanwhile agents handling the sale of County Hall on behalf of the London Residuary Body have submitted 16 planning applications to Lambeth Council seeking permission to turn London's former seat of government into a hotel. They have already submitted an appeal to the Secretary of State for the Environment because Lambeth has not yet heard the applications. The appeal is scheduled for January 28th.



# 8 ENTERTAINMENTS IN LAMBETH

**RA-RA ZOO** \* FRIDAY & SATURDAY  
7 FEBRUARY 7.30PM



**SURREY HALL**

ADULTS £15.00 Q&P, CHILDREN, BOX OFFICE LAMBETH AMENITY  
SERVICES 164 CLAPHAM PARK ROAD SW4 7DQ TEL 622 6655-6555  
750 3530 OR ANY LAMBETH LIBRARY. DISABLED ACCESS BOOK IN ADVANCE

CIRCUS COMEDY THEATRE

## TEA DANCES

TOWN HALL, ACRE LANE, SW2  
TUES 7TH APRIL 2PM  
Your Host: Trevor Jackson  
Dancing to: The Dave Kent Trio  
Tickets: 60p  
Ring 274 7722 x 2922 for info

SURREY HALL, BINFIELD RD,  
STOCKWELL, SW4  
THURS 12TH MARCH & 9TH APRIL  
Your Hostess: Eve Willet  
Dancing to: Dave Pinder Trio  
Tickets: 60p  
Ring 622 6655 x 361 for detail

LAMBETH AMENITY SERVICES  
164 CLAPHAM PARK ROAD SW4 7DQ  
TEL 622 6655 OR 750 3530

## Music Hall & Variety at Lambeth Town Hall

Wednesday afternoons 2pm-4pm  
(Show opens at 1.30pm)

- Feb 4th: **PALACE OF VARIETIES**  
Alexander Bridge introduces  
Billy Wells, Helen Scobie,  
Bruce James, Alan Terry,  
Bima Priest, Alastair Bean  
and the 'tophane' from Annie
- Feb 18th: **VICTORIA TO VIENNA**  
An afternoon of music with  
Howard Layton, Kay Carmen,  
Cilla Stewart, Joan Manning  
and starring John Murphy
- March 4th: **TROPICAL SUNSHINE**  
with Norman Mitchell, Pearl  
Ritchie, Jimmy Osborne, George  
Henry (Limbo Dancer),  
The Royston Gardens Steel Band

All seats 60p - Tickets from  
Lambeth Amenity Services  
164 Clapham Park Road, SW4 7DQ  
Tel 622 6655 ext 355 or 720 3530 (24 hrs)  
or from any Lambeth library.  
Limited wheelchair access  
- please book in advance



## CHILDRENS SHOWS and STOP-OVERS



FOR 4-12 YEARS  
LAST SATURDAY OF EVERY MONTH  
TICKETS £1

Sat 31st January 2pm  
'KING CAN and the 'ORRIBLE 'OLE'  
Bags of fun  
Sat 28th February 2pm  
'WORDS, MUSIC and NUMBERS'  
Childrens Theatre Co

STOP-OVER FOR THE FREE ACTIVITY  
SESSION AFTER THE SHOW at  
Longfield Hall  
50 Knatchbull Road, SE5

Advance Booking: 622 6655 x 355  
or 720 3530

## PUBLIC HAZARDS NO. 3

The latest in our series of hazards is this bollard on the corner of Union Street and Southwark Bridge Road outside the Borough Community Centre. **SE1** newspaper's forensic examination revealed that it was possibly knocked over by a Post Office lorry from the parcels depot in Union Street. We reported it to the Public Works Department on 5th January and it was fixed on 26th January. They're improving. This bollard knocked over raises the question many local residents in the past have also raised: Union Street needs to be made one-way, with no entry from Southwark Bridge Road. Can the Council's Highways Department address themselves to this problem please.



## Vacant sites survey in North Southwark

After years of office and commercial development one of the scarcest resources in North Southwark is land. Despite this, there remain vacant sites, derelict and underused buildings, and other pieces of land which could be used to meet the needs of the local community - decent housing, land for industrial development, open space etc. The GLC showed what could be done when it bought the Courages site which is now being developed for housing and industry and helped the Coin St Community Builders get the land they needed for housing, jobs and open space under its Community Areas Policy.

Although some of these sites have been looked at before in the North Southwark Plan the North Southwark Community Development Group is about to start a study with a view to updating the information on them so that their potential future use fulfils wherever possible the needs of the community. Size is not important - they can be large like the Bankside power station or small. What is important is to know what individuals and organisations such as tenants associations in the community think the best uses for these sites would be.

If you have any views on vacant land or run down buildings in the area, or would like some more information about the survey, contact us on 928-0711 or write to NSCDG, 56 Southwark Bridge Rd SE1 OAS.

## St Patrick's Day

St Patrick's Day is a very special day for the parishioners at St Patrick's, Cornwall Road, SE1. A special Mass is planned on Tuesday 17th March at 7.00pm followed by a get-together for attenders and friends. There will be a light buffet for which an at cost charge will be made. Strictly bring your own bottle and don't drink it beforehand!

The parish would also like to thank all the Waterloo people who supported the Michaelmas Fair. A massive £450 was raised which went some way to paying for our new central heating which now makes church attendance much more comfortable for the elderly.

St Patrick's is the smallest parish in the RC Diocese of Southwark and has suffered a drop in income since the abolition of the GLC - it had a great deal of support from GLC employees.

## SE1 NEWSPAPER

SE1

**SE1** newspaper is produced for residents of Waterloo and North Southwark by people living and working locally. We welcome your letters, news, photos or other contributions. **SE1** particularly welcomes contributions from the area's ethnic communities. We would also appreciate more articles from the Waterloo area.

## NEXT COPY DATE

Copy date for the next issue of **SE1** is Wed 25th March. Publication date is 3rd April. There will be no March issue. All contributions should be sent to 56 Southwark Bridge Road, SE1 OAS.

## SE1 AVAILABLE AT

If you want to receive your copy of **SE1** regularly, it is available from the Waterloo Action Centre, 14 Baylis Rd or from the Borough Community Centre at 56 Southwark Bridge Road.

## ADVERTISING IN SE1

**SE1** newspaper is run on a tight budget and is entirely financed by advertisements. If you would like to advertise your activities, events, organisation, jumble sales, products, services or whatever, you will find our rates very reasonable. To find out more about advertising in **SE1** telephone Gerry on 928 0711.

## SUBSCRIPTIONS

Subscriber rates to **SE1** newspaper are £5 a year for individuals and £15 for institutions. Cheques should be made payable to 'SE1 newspaper' and sent to 56 Southwark Bridge Road, SE1 OAS. We publish ten times a year with double issues during the summer and at Christmas.

## SE1 EDITORIAL GROUP

Mary Dimond, John Howes,  
S Lievesly  
Keib Thomas, G Vignola

## JOINING IN

**SE1** always welcomes people who wish to help in producing or distributing the paper. Get in touch with us at 56 Southwark Bridge Road.

**LAMBETH  
FUNERAL  
SERVICE**  
A fully professional  
service at a highly  
competitive price  
West Norwood  
Cemetery  
Phone 670 0011  
for full details  
**FOR LAMBETH PEOPLE**

# Stay warm this Winter

SE1 has prepared this pull-out supplement from Age Concern information packs on hypothermia and keeping warm. We also list useful telephone numbers for help and advice. If you think you qualify for the extra £5 exceptional cold payment, cut out the official form below and send it to your local DHSS office. The one form can be used to claim the two weeks for which payments will be made, Monday 12th - Sunday 25th January.

## Hypothermia

In old age the body temperature is often lower than normal as we become less active and avoid the increasing costs of keeping warm. Our diet becomes even more important for balance and for energy, especially at a time when interest in food can deteriorate. Coupled with bereavement, depression or medication this can result in someone who sits in cold temperatures coming dangerously close to the perils of hypothermia or cold related illness. Often it is very difficult to feel just how cold it is and so you should be extra vigilant.

What are the warning signs

An elderly person may not feel the cold but their body temperature could still be dangerously low. Be aware of:

- Slow and shallow breathing
- Very pale, sometimes grey, complexion
- Puffy face and blue lips
- Slow pulse rate
- General drowsiness
- Mental confusion and slowness in thinking
- Unsteadiness
- Slurred and husky speech

If you feel under someone's arms, or their abdomen, and they feel cold, this is also a sign that hypothermia is also a possibility.

IF YOU COME ACCROSS SOMEONE YOU CONSIDER COULD BE DUFFERING FROM HYPOTHERMIA

- DO: - wrap the person up well but do not overload with heavy blankets or clothing
- if possible, warm up the room
  - give a warm, nourishing drink
  - call the doctor

- DON'T: - apply heat directly to the skin
- use hot baths, etc
  - give alcohol to drink

IF YOU ARE NOT SURE - still call medical help quickly. A false alarm is better than death.

## Keeping warm

It is warmer to wear several layers of clothing rather than one thick layer. gloves, hat and socks should be worn indoors and in bed if necessary (20% of heat loss goes through the head). keep doors and windows shut, but bear in mind some heaters, such as paraffin, need ventilation if it is difficult and expensive to heat the whole premises, move into one room for the coldest months beds and chairs should be against an inside wall household jobs should be spread throughout the day if possible to keep active the bed should be warmed before getting into it, using either a hot water bottle or an electric blanket, but not both together newspaper between blankets will help reduce heat loss a blanket is needed on top of the mattress a dressing gown or coat and slippers should be worn if people get up in the night simple 'double glazing' with polythene will cut down draughts (Age Concern Southwark can do this work. While stocks last, material will be provided free) aluminium foil, placed behind radiators, shiny side facing outwards, will push heat into the room (Age Concern will also do this work) keep a stock of emergency foods save fuel when possible by cooking foods in the same container all pensioners should check with advice agencies, the DHSS, Age Concern, etc. to make sure they are receiving all benefits which are available. Many people are not claiming benefits they are entitled to and you should make sure you are receiving the maximum entitlement.

Age Concern will provide free for the elderly: bedding, clothing, simple insulation and draughtproofing, hot water bottles. At low cost are certain essential foods, room temperature charts (35p), thermal underclothes and other services.

## Advice

AGE CONCERN can be contacted at:

Bermondsey: 188 Jamaica Road, SE16, Tel: 231 2286  
Camberwell: 67 Crawford Road, SE5, Tel: 274 0849  
Peckham: 33 Peckham Road, SE5, Tel: 703 6105  
Lambeth: 1/5 Acre Lane, SW2, Tel: 274 7722

ADVICE from:

Blackfriars Advice Centre, 44 Nelson Square, SE1, Tel: 928 9521  
Waterloo Action Centre, 14 Baylis Road, SE1, Tel: 261 1404

AGE CONCERN



## Hypothermia Line

Southwark Council's Social Services Committee has set up a 'Hypothermia Line' - an emergency telephone number which will operate 24 hours a day to deal with calls about hypothermia. As well as the telephone line, the Committee has allocated £10,000 to Social Services to set up these emergency hypothermia facilities for the elderly, disabled and families with young children.

You can call the Hypothermia Line on 703 5464.

## Draughtproofing

Draughtproofing can reduce heatloss from a home by as much as 40%, keeping you warmer and saving you money too. If you are on a low income you might be able to get your home draught-proofed for free from the local charity 'Lambeth Heatwise'. Heatwise fits draughtproofing to doors and windows and gives practical advice on staying warm. Ring them on 675 6822.



You may be able to get an extra £5 for each week of very cold weather if you can answer yes to these four questions:

- |   |  |   |  |
|---|--|---|--|
| 1 Are you getting supplementary benefit or housing benefit supplement?  | Yes <input type="checkbox"/> No <input type="checkbox"/> | 2 Are you or is your partner a householder?   | Yes <input type="checkbox"/> No <input type="checkbox"/> |
| 3 Are you or is your partner 65 or over? Or are you getting supplementary benefit for a child under two? Or are you or is your partner or child disabled or long-term sick? | Yes <input type="checkbox"/> No <input type="checkbox"/> | 4 Do you and your partner and your children have less than £500 in savings between you? | Yes <input type="checkbox"/> No <input type="checkbox"/> |
- If you have more than £500 in savings please say how much you have. (You may still get benefit.)

£

I claim extra help with my heating costs.

Sign here \_\_\_\_\_ Date \_\_\_\_\_

Full name \_\_\_\_\_

Address \_\_\_\_\_

Send this advert to your social security office. The address is in the phone book under HEALTH & SOCIAL SECURITY, DEPT OF. Do not delay or you may lose money. If you want more information get leaflet SB.17A Extra help with heating costs from your social security office.

This information applies only if you get supplementary benefit from: