

SEL

ISSUE 51 MAY 1987 FREE COPY

Blackfriars Literacy Project - more students sought in centenary



1987 is the centenary year of Blackfriars Settlement where the Blackfriars Literacy Scheme is based. Blackfriars Literacy Scheme has helped many local people with reading, writing and maths since it began in 1969 and is hoping to celebrate this centenary year by attracting lots of new students. Students can learn in friendly, informal groups or have their own personal tutor, and it's all free of charge.

Our aim is to provide help with reading, writing, spelling, maths and English for adults who live in Lambeth and Southwark. Our students can work in small informal groups with at least two tutors. If they wish students can also work with their own personal tutor for two hours a week. In fact our philosophy at Blackfriars is based on students making their own choices about the way they learn and how they go about it. They are also encouraged to make decisions about how the Literacy Scheme itself is run.

The Literacy Scheme is open from 10.00am until 9.30pm from Monday to Thursday and students can join a morning, afternoon or evening group, or meet with their own tutor at these times. We also run a

drop in service for people needing help to fill in forms, etc.

Monday is 'Women Only Day'. In the morning women study maths and in the afternoon work on reading, writing and spelling. Both these groups are covered by a creche so that women with children are free to study in peace. On Tuesday mornings we hold a Cookery groups that students can develop their reading, writing and numeracy skills through menu writing, budgeting and costing. Throughout the year there are workshops and socials for all members of the Scheme. Every year we also hold a residential weekend so that everyone has the opportunity to get away from London and concentrate on writing.

We actively welcome black people and those from minority groups to join the Literacy Project and implement an Anti-Racist policy.

If you think you would like to join us for help with your reading, writing or maths, or know someone else who might like to, please contact Shirley May, Barbara Ellis, Alison Jaynes or Barbara Khwaja by ringing on the following numbers: 928 9521 or 928 5116.

Residents oppose Hays Wharf 'Fortress'

The North Southwark Community Development Group is backing the Tooley St Tenants Association in its fight to stop the development on Hays Wharf of over 1.25 million square feet of offices. The scheme is backed by Kuwati owned property developers St Martins. It forms Phase II of the so-called London Bridge City and is located on a site next to Tower Bridge.

The Hays Wharf site - 25 acres between London and Tower Bridges - has been the site of bitter planning battles between local people who saw the land as an opportunity to provide rented homes, jobs which match local skills and open space, and speculators who saw the opportunity for massive profits at the expense of North Southwark residents.

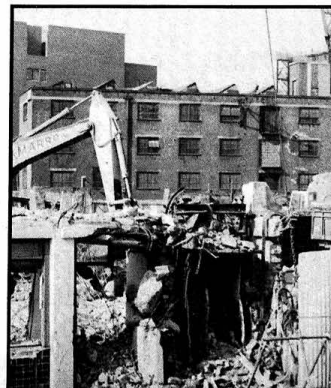
A public inquiry in 1981 threw out much of a scheme for 2 million square feet of offices. In 1981 the area came under the planning control of the London Docklands Development Corporation

(LDDC). They drew up a scheme in conjunction with the developers for even more offices. Avoiding normal planning procedures this went straight to the Secretary of State, by then Patrick Jenkin, who approved it using a Special Development Order. This was much criticised at the time.

The scheme was split into two phases. Phase I, a mad jumble of architecturally inept new build and refurbished listed buildings together providing 1 million square feet of offices is now complete and St Martins have appointed American architects Philip Johnson and John Burgee to design Phase II.

The proposed development, a copy of the Houses of Parliament, will be a 300 feet high wall of offices towering over Tooley Street.

Lil Patrick, a lifelong resident of the area and Chairwoman of Tooley St Tenants Association told SEL "There is no way that the LDDC can rubber stamp this development. More offices is the last thing we need around here, they are killing the area. It will be dead after 5pm and no use to local people during the day. It's not a 'City' that St Martins are building here but a 'Fortress'. At the very least there must be a public inquiry into this scheme."



Demolition work on Bethel Estate and at Hays Wharf

BERMONDSEY PHOTOGRAPHY PROJECT

The Bermondsey Photography Project is based at the Beormund Community Centre and was formerly the Blackfriars Photography Project. Below you can read about what the project does and what its activities are.

The Project runs workshops which are based on working around the experiences of those who attend. It aims to teach the practical side of photography through to discussing the issues involved. Everyone is welcome from beginners to experienced photographers. In addition to the workshops the Project also has guest speakers and trips to exhibitions and other projects.

The Project also produces exhibitions, tape-slide shows, posters and leaflets. Audio-visual equipment is available for hire. The Project also advises on setting up and running photography projects and can provide photographers to take photographs of local events. It also offers assistance to local campaigns on publicity.

Bermondsey Photography Project is committed to challenging the inequalities of sex, race and class.

DOCKLANDS DOCUMENTARY GROUP

This is for anyone and everyone. The group will start by exploring the changing face of Docklands by the people who live, work or study here.



Beormund, 177 Abbey St, London SE1 2AN

237-9312



Parish of Waterloo

The Parish of Waterloo is the Church of England in the Waterloo area.

You are welcome to any of our activities.

Parish office telephone: 633 9819

St Olaves Mansions saved for the tenants

SE1 readers will recall our coverage two years ago of tenants at St Olaves Mansions in Walnut Tree Walk, SE11, who began a major campaign to persuade their landlords not to sell their homes to property speculators.

St Olaves Mansions was owned by the Trustees of St Olave, St Thomas and St John United Charities, based in Druid St, Bermondsey. The Trust wanted to sell the estate on the open market without the knowledge of the tenants, many of them elderly and infirm. Getting wind of this, they formed a Tenants Association and with the help of Vauxhall MP Stuart Holland they campaigned for the estate to be taken over by a Housing Association.

The case was also taken up in Parliament, on Television and in the national newspapers. Subsequently, the Clerk of

the Charity, Mr Pollock, and three of his business associates were charged by the Fraud Squad in connection with sales of other properties belonging to the Charity at knock-down prices. Thirteen properties in Kennington Road and Walnut Tree Walk were sold in January 1985 for a total of £52,000. Less than 6 months later, one of the properties was on the market at £110,000!

Now, a £2 million scheme to purchase and renovate the 40 homes which form St Olaves Mansions has been announced by Cllr Fred Taggart, Chair of Lambeth's Housing Committee.

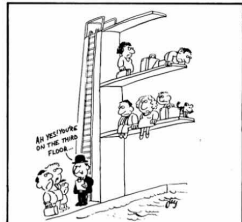
The 50 year old block has been bought by the London & Quadrant Housing Association with £955,000 of Council money. Renovations will cost a further £1 million.

Two young men talking.... Mike: ... homelessness - it's their own fault. People are too choosy - there's a load of flats advertised in the newspapers.

Dave: Yea, could you pay deposit and rent in advance? No, neither can a lot of people. I was homeless when I left home - after my Dad kicked me out. Couldn't stay at friends for long; tried hostels - not much fun carrying all my clothes around with me.

Mike: How come you're living here in a council flat? Dave: With difficulty! I stayed at a hostel which gets offered a few flats from the Council each year.

Mike: No problem then, everyone can do that.



Dave: They're aren't that many council flats. You've heard about the waiting lists? You've got little chance if you're young and single.

Mike: I've been thinking about leaving home - having my own place. Do you mean there would be nowhere I could move to?

Dave: That's about it. There's just enough houses and flats for the number of people who need them and some are too expensive anyway.

Mike: Doesn't seem fair. I'd always thought it was people's fault if they had nowhere to live. Any thoughts on how to change it?...

LDDC cold-shoulders Southwark

Six months ago Southwark's Planning Committee set up a special procedure to ensure that the LDDC receives its comments on planning applications. The result - the LDDC has not refused a single application in the Southwark area. It comes as no surprise that the LDDC does not listen to policy objections - readers will remember that the LDDC was the principle objector to the Council's blueprint for protecting local people from speculators, the North Southwark Plan.

However, the LDDC is also dismissing Southwark's concerns about highway and traffic arrangements, about disabled access and inadequate size of new homes and safety and security guidelines. It is clear that the LDDC completely disregards the Council's commitment to equal opportunities and the improvement in the quality of residential accommodation and is only concerned with getting as much built as quickly as possible with as much profit as possible for the developers. What must be remembered is that the LDDC was only given a 10 year "lifespan" by the government in 1981. Southwark will be stuck with what it leaves behind for the next 100 years.

Lambeth council revamps its funeral service and Southwark starts its own

Fifteen months ago Lambeth Council launched its own funeral service, which was the first of its kind anywhere in the country. With the benefit of this experience, Lambeth has recently changed its funeral directors to the Cooperative Funeral Service which has especially opened an office in the borough at 114 Brixton Hill, SW2.

Lambeth Funeral Service offers Lambeth residents a fully professional and dignified service at an affordable price. The basic cost of the service is currently £280, with extras, which include such things as doctor's and minister's fees and cremation or burial charges. With these extras a cremation is likely to cost between £335 and £370.

To arrange a funeral ring the Cooperative Funeral Service on 674 5298. This is a 24-hour service. If you want further information, ring Lambeth Public Services on 720 2177.

Rockingham Womens Project is one year old!

150 women and 50 children celebrated the first anniversary of the Rockingham Womens Project with a party last month in the Community Centre.

While creche workers played games and did crafts with the children, their mothers and older sisters were entertained by Indian classical dancers and a shadow puppet performance by 'Invisible Women'. There was plenty of food and drink and music to cater for everyone's tastes.

The Rockingham Womens Project is open every Thursday at the Rockingham Community Centre, Rockingham Estate. Every week there is a wide range of classes and activities, including keep-fit and crafts. There is a cafe and a creche and most of the classes are free.

For more information contact Helen or Sylvia on 403 7475, or drop in the Rockingham Women Project, Rockingham Community Centre, Falmouth Road, SE1.



Craft activities at the Womens Project Photo: Sylvia Piller

LAMBETH FUNERAL SERVICE

As well as the tremendous feeling of loss, a death in the family is often the occasion for important decisions about burial or cremation - which usually involve considerable sums of money and carry serious implications for the family's finances. Understandably, the bereaved need to be certain that the funeral service provided meets with the best professional standards, and that the funeral is carried out in a solemn and dignified manner by a reputable undertaker.

The Lambeth Funeral Service has been designed to this end.

The funeral is in every way comparable to other funerals on offer in the high street, but the price has been substantially reduced through negotiation by the Council.

The basic cost of the service is currently £280, with extras, called disbursements, which include such things as doctor's and minister's fees and cremation or burial charges.

With these extras a cremation is likely to cost between £335 and £370.

The Funeral Director will also provide any extra requirements such as additional limousines at a fixed price.

To arrange a funeral simply take this leaflet to:

The Cooperative Funeral Service
114 Brixton Hill,
London SW2
674 5298 (24 hour service)
For Lambeth People

LETTERS

Dear SE1

MINT STREET OPEN SPACE

I have lived in Southwark for 30 years and it's undergone many changes and is still in the process of developing. We are all aware that the Mint Street Open Space used to be the Evelina Childrens Hospital and was well used, being the only one of its kind in the area. It was a great loss when it was demolished. It made way for the Open Space which many people thought would be flower beds and young trees giving a patch of countryside to a concrete environment.

Sadly it is used for dog owners and the dogs are let loose to defecate where they want to including any promising flower beds or shrubbery. It has become a rather large toilet. Children cannot play on the grass and neither can adults. It's a health hazard.

It would be ideal if the square of Mint Street Open Space was fenced off so that the surrounding park could be shared by children and local people. People who work in Southwark often use Mint Street in the summer during their lunch hour and there is nowhere to sit except a couple of benches which are often taken.

The small park has been graffitied and often has broken bottles and cans thrown about, it's hardly ever used once again it is becoming hazardous. If children stumbled they could injure themselves.

Southwark needs a safe park for children so that they can run freely. It needs to be dog free so that parents can be assured that their children are safe. My motto is: Keep shit off the grass!

A concerned parent
Miss Hanafin



Mint Street Open Space: used by lots of children - should it be dog-free?

Trust drags its feet over Peabody rats

A tenant's long-standing complaint about rats running riot under the floorboards of her flat on the Peabody Trust estate on Southwark Street appears to be moving finally towards a solution.

Mrs Braidwood and her husband, who have two young children, are tenants of C Block on the estate. They first complained in October last year to the Trust management when they discovered a rat in their kitchen waste bin. Officers from Southwark Council's Pest Control Department were called soon after and laid poison which yielded three dead rats within two days taken from under the kitchen floor boards.

Trust workers came to block up a number of holes behind the sink from where the rats were getting into the flat itself. Mrs Braidwood though complains that the job was left unfinished and that they had to call, and pay for, private contractors to finish the job. It wasn't until January, five weeks after starting the job, that the Trust called back to complete it and were sent away by Mrs Braidwood.

Mrs Braidwood's problems didn't stop there, however. Things went quiet for a month but then the rats reappeared under the floorboards in the kitchen, the hallway and the daughter's bedroom. Throughout the night the Braidwoods can hear the rats gnawing away and have put steel sheeting under the carpet in the daughter Rebecca's room afraid that the rats might gnaw their way through.

Other tenants on the estate, neighbours of Mrs Braidwood, can tell similar stories. Mrs Esposito, also of C Block, recalls having had rats in her flat 8 years ago. In the middle of March, Mrs Killick discovered a rat in her toilet and immediately called

the Trust and stopped payment of her rent until the management cleared the rats out. Trust workers discovered a dead rat in the flat's drain pipe. Mrs Mosely has seen rats coming up from holes in the ground on the estate and kids on the estate have seen them around the estate as well. Miss Briggs, an eighty year old who lives above the Braidwoods, has had rats for the past three years.

At the beginning of April, Southwark's Pest Control officers were again called to the estate and discovered two defective drains, one behind G Block and the other, at the entrance to Mrs Braidwood's flat. It appears that this is where the problem lies and the Pest Control Department has sent an letter to the Trust's Surveyor, Mr Thorpe, stating that these drains need to be urgently repaired.

Mrs Braidwood insists though that her floorboards need to be taken up and a concrete floor put down. The Pest Control officer SE1 spoke to said that they would need to be taken up to check for escape of sewage. Mrs Braidwood has written eight times to the Trust since last October and only in the middle of April did she receive a reply from them. SE1 spoke to the Trust's surveyor, Mr Thorpe, who wasn't able to give an explanation for why the problem has dragged on except to say that he thought Mrs Braidwood was exaggerating and that these things take time to resolve.

One thing is certain though: under the Pest Control Act the onus is on the Trust to control rodents on its property. The letter from Southwark Council's Pest Control Department - if not Mrs Braidwood's regular complaints - may be just what is needed to sting them into action to resolve this problem once and for all.

SOUTHWARK WOMENS CENTRE

Southwark Womens Centre opened on Saturday 25th April, at 2 - 8 Peckham High Street, SE15. It offers regular services to the women of Southwark, including cheap lunches, free pregnancy testing (Wed 11 - 1), a resources room with a photocopier and typewriter, counselling services (by appointment on Tues and Thurs), and advice sessions on Weds 2 - 5pm, on welfare rights, housing, employment, health, etc.

The opening times for the Centre are: Mon - Wed, 10.30am - 4.00pm; Thurs, 1pm - 8pm; Fri, closed; Sat, 11.30am - 3.30pm; Sun, 2pm - 5pm.

Pop in to the 'Drop in' for coffee, tea, lunch or use the payphone, watch TV and Videos, advice and information, books and newspapers are available.

ALL WOMEN WELCOME

ONE WORLD BUS TOUR OF SOUTHWARK'S RIVERSIDE

Southwark World Development Group has recently published a booklet on North Southwark called 'One World Bus Tour of Southwark's Riverside - A different view'. It is devised and written by Richard Bainbridge.

The booklet is a guided tour of Southwark's riverside and looks at life here from the viewpoint of the people of Asia, Africa and Latin America, the so-called Third World. The tour aims to highlight aspects of our past and present which can shed light on the extremes of wealth and poverty between different parts of the world.

At 201 Borough High Street for example is the head office of the commodity trading firm Gill and Duffus. They deal with a number of products grown in Third World countries such as coffee, rubber and sugar. They are one of the largest cocoa merchants in the world. Third world producers of these products cannot process them themselves because of trade barriers erected by the developed countries.

The tour also illustrates some of the changes and pressures which have put Southwark high on the list of Britain's deprived inner urban areas. While many in the borough suffer, developments are taking place generating millions in profits for a few. St Saviours Dock, built on the site of some of London's worst slums several centuries ago, is now being converted into a yuppie playground where converted flats change hands for hundreds of thousands of pounds.

The booklet is available from Southwark World Development Group, 3 Fenwick Grove, SE15 at 75p.



wonderful view across south and east London.

The hottest Easter for 38 years has got the Spring off to a glorious start. During the last 2 weeks I have visited Kennington, St James and Greenwich Parks, Kew Gardens and Hampstead Heath.

These places have all benefited from the mini heatwave. Each day more trees and shrubs are coming into bloom to join the spring bulbs and alpine plants. This feast of flowers will be at its peak during May and I can thoroughly recommend a visit to any of these parks.

Kew has a magnificent collection of plants from all over the world. The only annoyance is that the entrance charge has been raised from 25p to 50p. Hampstead Heath combines the informality of the naturally wild countryside with areas of lawns, meadows, ponds full of water birds and plants. Greenwich Park has avenues of chestnuts planted in 1642, formal gardens, two cafes, a planetarium, museum and a

In the garden, windowledge or verandah, its time to sow annuals and plant up with bedding plants and bulbs for a profusion of flowers through summer into Autumn. Of the annuals I sow linaria, cosmos, geraniums, nasturtium, godetia, nemophila still flowering in November provided the dead flowers are regularly removed. This year try potting up some lilies, gladioli and other summer bulbs in pots or window boxes.



COLOMBO STREET UNDER 10'S

The Colombo Street Under 10's Football Team (pictured) came fourth in the L.F.Y.A. Cup in their first year in the League. Congratulations boys. They are looking forward to doing even better in next year's Cup.

Pictured in the Colombo St Team are: Back row left to right - ZEN BEECHY, DANNY NOULTON, CHRISTIAN TURNER, PAUL LUSBY, WAYNE TURNER, LEE BOWD. Front row left to right: BRIAN PAPE, MICHAEL MCGUINNESS, JAMES COTTRELL, MARK BOWMAN, STEVE ELLISTON, CRAIG HAWKES.

Boys of all age ranges under 15 years of age are invited to put their names down for a variety of competitions, leagues, etc. to be held during the 1987/88 season. There will be five-a-side, six-a-side and eleven-a-side. The Colombo Street Sports and Community Centre can provide coaching. For further details please contact the Centre in Colombo Street or ring 261 1658.



Contestants line up for the Easter Bonnet Parade held last month at Borough Community Centre. The winners are pictured on the right.



Waterloo Channel Tunnel Terminal: House of Lords Select Committee angers residents

Hundreds of Waterloo residents petitioned the House of Lords Select Committee hoping to give their evidence against the Channel Tunnel Terminal at Waterloo Station. Many were refused permission to speak and were bitterly disappointed. Those who did speak put up a good case. Below we reproduce some of the extracts of Waterloo residents' evidence to the Select Committee, taken from the 'Minutes of Evidence' produced at the end of each day's hearings.

Burt Stein, AWG Secretary

What went in all of these cases was housing and workshops so that the means by which a population could work and live in Waterloo was steadily eroded, certainly by the years immediately after World War II. The Festival of Britain is a good example of that since there were many clearances at the time and a promise was made that there would be a restoration of housing after the festival itself was over but that never happened. It was one large blighted area, it was never rebuilt and now housing is starting to be rebuilt.

The net result of all these things is at present the

population has dropped from 30,000 to 10,000. By 1981 the local authority ward, Bishops Ward, contained 31 per cent of Lambeth's employment, an astonishingly large proportion. 48 per cent of it is office employment, located in Bishops ward, the core ward of Watrelloo.

Margaret Mellor

It is an insult to imagine that we or anyone else will believe that 2-3 million extra vehicles will make no discernible difference to York Road and Baylis Road, or that it will be easier for pedestrians to get to Waterloo Station, or that there will not be a horrendous problem of illegal parking in the surrounding area. All these claims are an insult to us.

The vast majority of us do not own our own housing. We cannot choose to go to a better place after you have degraded Waterloo.

I beg the Committee to show us that they are fair-minded, by enabling a full, fair and public discussion of these other possibilities, so that the Waterloo community can be saved from destruction. I would therefore ask you to remove Waterloo as a sole

terminal in the Bill.

Doreen Ramsay

The pensioners are afraid of extra traffic, the extra people and they would be afraid to cross the roads. It is bad enough now because quite a lot of the senior citizens are feeble and it would be very bad for them to go out. They do not go out in the evenings most of them and a lot of them will not go out in the day if they can help it.

Q: When you have your meetings, where do you hold them?
A: Waterloo Action Centre, inside the ring road going around the station.

Q: How do you view going to your meetings when the traffic is coming out of Taxi Hill as well as going into it?
A: I do not know, because if they put a tunnel to go under the road, they will not go under there because they are afraid of the muggings and, if it is upstairs, too many stairs, they will not walk up and go further. I think it would be very difficult (in future) to get to the Action Centre, you would probably have to wait a good half an hour before you can get across.

David Harter sums up

In the past when we have advanced this kind of argument, not about the Channel Tunnel, but on land values, hope values, and so on, - when we have done that we have pressed the local community for planning permission and so on to use planning permission for the best possible cause. Those things have happened in the past. Noone has yet said to us: "Well I'm very sorry, you may have a very good local community, and very admirable people, but you will have to give way to this development." Noone has yet said that, but if you think my clients' fears are justified, then you will have to say openly in your report: "We are sorry about this, but we are going to have to sacrifice this community."

Finally my Lords, therefore, we come to this point: to sacrifice an inner city community like Waterloo after a careful public inquiry would be an extremely sad thing. But to sacrifice it without any proper public inquiry and to sacrifice it after what your Lordships admit is not the proper forum, to sacrifice the local community in that way is madness.

LUNCHTIME ACTIVITIES

BADMINTON - TUESDAY, WEDNESDAY, THURSDAY & FRIDAY, 12 NOON - 2 P.M. Bookings are of 30 minutes duration and may be made by phone only from 10 am onwards on the MONDAY of the week concerned. COST: £1.30 PER COURT.

LADIES KEEP-FIT - MONDAY 12 NOON - 1.30 PM. Light exercises and movement to music. COST: £1.20 PER SESSION.

YOGA - THURSDAY 12.15 PM - 1.15 PM. Open to both men & women. COST: £1.20 PER SESSION.

TABLE TENNIS - THURSDAY 1.30 PM - 2 PM. Bookings are of 30 minutes duration and may be made by phone only from 10 am onwards on the MONDAY of the week concerned. COST: £0.60 PER TABLE.

EVENING ACTIVITIES

KARATE - TUESDAY & THURSDAY 7.30 PM - 9.30 PM. Shotokan Karate with instructor Milton Johnson (1st Dan) COST: £1.25 PER SESSION.

MENS CIRCUIT TRAINING - WEDNESDAY 5.30 PM - 7 PM. Circuit Training with weights etc. Instructor - Jim Donnelly. COST: £1.20 PER SESSION.

BADMINTON - WEDNESDAY 6 PM - 10 PM. Informal, friendly sessions for allcomers. Equipment provided. COST: £1.25 PER SESSION.

BOXING - MONDAY & FRIDAY 6.30 PM - 8 PM. Training with the COLOMBO/STAMFORD CLUB. Instructor - Lionel Baldwin. COST: £0.50 PER SESSION.

WOMENS KEEP-FIT & EXERCISE - WEDNESDAY 7 PM - 8.30 PM. A mixture of light exercises, weights etc. to get and stay fit. COST: £1.20 PER SESSION.

WEEK-END PROGRAMME

ROLLER SKATING - SATURDAY 10.15 AM - 12 NOON (DOORS OPEN 10 AM). Family Session - all welcome. COST: £0.50 ADULTS £0.15 UNDER 16's. SKATE HIRE INCLUSIVE.

BADMINTON - SUNDAY 11 AM - 4 PM. Informal, friendly sessions for allcomers. Equipment provided. COST: £1.25 PER SESSION.

JUGGLING WORKSHOP - SUNDAY 12.30 PM - 3.30 PM. Learn to juggle and ride a unicycle, in Max & Sue's Juggling Workshop! COST: £2.20 (£1.20 CONCESSIONS)

BADMINTON COURTS & TABLE TENNIS TABLES ARE AVAILABLE ON SATURDAYS FOR HIRE. 1.30 PER COURT PER HALF HOUR. £0.60 PER TABLE PER HALF HOUR.

ACTIVITIES FOR WOMEN ONLY

WOMENS MORNING OF SPORT - TUESDAY & FRIDAY 10 AM - 12 NOON. Keep-Fit, Badminton, Netball, Multi-gym etc. Informal, friendly sessions, with free creche for under 5's. NO CHARGE FOR EITHER SESSION, BUT ENROLMENT WITH MORLEY COLLEGE REQUIRED FOR THE FRIDAY CLASS. LADIES KEEP-FIT - MONDAY 12 NOON - 1.30 PM. See Lunchtime activities section. WOMENS KEEP-FIT & EXERCISE - WEDNESDAY 7 PM - 8.30 PM. See evening activities section.

SPORTS SESSION FOR THE UNWAGED

Every WEDNESDAY 2 pm - 4 pm. Badminton, football, etc. all equipment provided, session free of charge.

DISABLED PERSONS SPORTS EVENING

Disabled persons are invited to join in our MONDAY evening session of badminton, bowls, multi-gym, table tennis etc. 8 pm - 10pm, session free of charge. PLEASE CONTACT STEVE THOMS SOUTHWARK DISABILITY OFFICER ON 703-3499 FOR MORE DETAILS.

MEMBERSHIP OF THE CENTRE

FULL MEMBER £4.50 PER YEAR
PASSPORT £1.00 PER YEAR
YOUTH £1.00 PER YEAR

Open to all residents of the boroughs of Lambeth & Southwark.

ASSOCIATE MEMBERSHIP IS AVAILABLE AT A COST OF £20 PER ANNUM.

(PLEASE SUPPLY 2 x PASSPORT SIZE PHOTOS)

NON-MEMBERS ADMISSION 30p.

SENIOR CITIZENS

Colombo Street runs a full programme of activities for over 50s. Each Monday & Thursday 2pm - 4pm badminton, bowls, and a social club in a warm and friendly atmosphere. FREE OF CHARGE. NEW MEMBERS WELCOME.

WEDNESDAY 10 AM - 11.30 AM - OLD TIME DANCING/SEQUENCE DANCING. COST: 10p MEMBERS, 25p NON-MEMBERS.

YOUTH ACTIVITIES

All youth activities cost 15p per session to members. The Centre runs a comprehensive programme of activities for young people, including: badminton, boxing, karate, weight-training, football, recreational games, roller skating and social activities for a wide age range. PLEASE SEE SEPARATE YOUTH LEAFLET FOR DETAILS OF DAYS AND TIMES.

HATFIELDS OPEN SPACE

The open space in Hatfields is available to hire seven days a week for, football, netball and tennis. Bookings are of 60 minutes duration and may be made by phone only from 10am onwards on the MONDAY of the week concerned, for that week plus the following Monday. COST: £5 PER HOUR FOOTBALL/NETBALL. £2.50 PER COURT, PER HOUR TENNIS.

WEIGHT-TRAINING

The weight-training area is open to proficiency card holders only seven days a week. Please enquire at reception for details of courses.

Tuesday, Wednesday & Thursday - 12 noon - 9 pm. Monday & Friday 12 noon-8pm.

Saturday & Sunday - 10.30 am - 3.30 pm. COST: £0.80 PER SESSION.



COMMUNITY AND SPORTS CENTRE

COLOMBO STREET, LONDON SE1 8DP. TELEPHONE: 01-261 1658

Lambeth Community Care Centre Advisory Group

Just over 18 months ago the West Lambeth Area Health Authority opened the first ever Community Care centre in Monkton Street next to the old Lambeth Hospital. In this time they have treated 1,700 patients. The aims of the Centre are to provide both day care and short term hospital care to patients requiring a wide range of treatment through the NHS.

The Centre has been designed on a homely scale providing comfortable rooms, a lovely garden and lots of natural light.

On the ground floor there are the day centre rooms and therapy treatment rooms for chiropody, physiotherapy, dentistry, speech and occupational therapy.

Upstairs there are 20 beds for short stay patients who are either waiting to go into hospital and who cannot be cared for at home or who have come from hospital and need care until they can return home.

The system of referral for treatment at the Centre is through your GP. He or she must have agreed with the Centre to refer patients there. You can ask your GP

about this.

The Centre recently formed a Centre Advisory Group (CAG) made up of 7 staff and 7 community representatives. The aim of the CAG is to ensure that the Centre actually provides the care and services that the local community needs. This is where the community representatives are important as they provide the voice from the community to the management team.



The CAG is organising an open evening for all those interested to come along and see the work of the Centre and to meet the CAG representatives in June. More details about this will be in the June issue of SE1.

North Southwark Community Development Group put up a representative to the elections for CAG and since elected will report back to North Southwark groups about the progress of the Centre's work.

Guinness TA formed

Residents of the Guinness Trust Estate on Kennington Park Road have recently set up a Tenants Association.

They would like this to be known to other Guinness Trust tenants and to offer support

to anyone interested in forming a Tenants Association on Guinness Trust estates south of the river.

For further information, write to 56 Southwark Bridge Road, SE1.



OPEN AFTERNOON

DISCOVER YOUR HEALTH SERVICES

at our

OPEN AFTERNOON

on

MONDAY 1ST JUNE, 1.00 - 4.00pm

at

Barley Mow Clinic

Tanswell Estate, Frazier Street, SE1

Creche/ refreshments / Videos / Information

Relaxations Sessions and more ...

All welcome

PUBLIC HAZARDS NO. 5

Local resident Lynn Gonzalez tries to get home with two of her children, Lydia and Danilo. It looks as though SEGAS has prepared their grave for them as they struggle to get into 40 Tabard Street. As well as being home for 12 people the place is used primarily by pensioners. SEGAS came to investigate a gas leak on 26th March, found a cracked main and then left the 'grave' there for four weeks. Surely holes can be filled in quicker than that.

Incidentally, gas engineers said the crack was caused by heavy traffic around the one-way system. Steve Lancashire, director of Charterhouse-in-Southwark, is urging the Southwark Council to pedestrianise Tabard Street and make Great Dover Street two-way. He has written to Council Leader Anne Matthews and to the Borough Engineer Tony Williams.

How long will pensioners and young families have to wait before the Council put their needs before lorries and Rolls-Royce drivers (guess what kind of car is about to try and knock Lynn down).



TRAINING COURSES FOR SOUTHWARK COMMUNITY GROUPS SUMMER 1987

ORGANISING AN EVENT

1 Day Workshop Thurs 7th May
10am - 4pm G.T.'s Community Centre
1 Glengarry Road SE22

VIDEO

Ring 735 4668 11th - 25th May and
for details 25th - 29th May

DISABILITY AWARENESS

2 Day Workshop Thurs 21st and 22nd May
10am - 4pm Linden Grove Comm. Centre
56a Nunhead Lane SE15

MAKING AN EXHIBITION OF YOURSELF

6 Half Day Workshops Weds 20th & 27th May
& 3rd, 10th & 17th June

ACCOUNTING FOR COMMUNITY GROUPS

Day and Eve Courses Day Course A, Weds 27th May, 3rd, 10th, 17th June
10 - 3.30pm Day Course B, Thurs 11th, 18th, 25th June, 9th July
6.30 - 9pm Evening Course, Tues 26th May, 2nd, 9th, 16th, 23rd & 30th June
Fee: £12

P.A.Y.E.

10 - 4pm Mon 15th or 22nd June

STATUTORY SICK PAY

10 - 3.30pm Wed 24th June or
Tues: £6 Tues 7th July

These and other Summer courses are being put on by Southwark Community Development Forum in conjunction with Southwark Community Development Section and Southwark Adult Education Institute. Please ring Debbie Reeves, Southwark Community Development, for a booking form, on 703 0911 ext. 225.

ENTERTAINMENTS IN LAMBETH

KENNINGTON
FUNDAY MONDAY
FOR ALL THE FAMILY
ALL DAY AND EVENING NON-STOP ENTERTAINMENT

9 PM FIREWORKS DISPLAY + FIRESHOW WITH NO FIT STATE CIRCUS

1 PM - 9.30 PM BANK HOLIDAY MONDAY 25 MAY KENNINGTON PARK SE1

INSIDE
1 PM - 6 PM
Arts Play Umbrella presents
WEBB-FOOTE PRODUCTIONS, NO FIT STATE CIRCUS, GOFEE - clowning, juggling, pantomime, songs and music
7 PM - 9 PM
NATIONAL STEELBAND CHAMPIONS - LONDON ALL STARS + SOCA MUSIC with MASQUERADE

OUTSIDE
1 PM - 6 PM
UTHINGO - African dance + drumming
CHILDRENS FUN + GAMES
LAMBETH BLUNDERBUS SPORTSMOBILE
DONKEY DERBY
STALLS - SIDEROWS
PERSONS FUNFAIR

ENQUIRIES
Lambeth Amenity Services, 144 Clapham Park Road SW4 7DD, Telephone 622 6655 x 359/361

LDDC steamrollers local needs

In the last six months the London Docklands Development Corporation has overseen the loss of 2,000,000 sq ft of industrial floorspace in North Southwark, which adds up to nearly 4,000,000 sq ft over the past year. It has largely been replaced by luxury housing - over 1,666 have been approved since last October and another 1,458 units are awaiting planning determination. Of these only 2% - Cherry Gardens - meets local housing need.

It will be comforting for the 28% unemployed in Bermondsey and the 7,000 on the housing list to know the reason why the land that could be used for industrial developments and rented homes is being used for houses for the rich. Michael Heseltine, the Minister responsible for the LDDC in the first place, told it to the Leader of Newham Council last year. He said: "I believe the rich people who make the decisions should live among those they make the decisions for."

Not all those homes are lived in of course. Even the estate agents are getting worried about the number of "investors" (speculators and profitmongers in plain language) who are buying up docklands housing and accelerating the prices spiral. Local people don't need to worry though, not with all those rich people taking the decisions for them.

SE1 NEWSPAPER

SE1

SE1 newspaper is produced for residents of Waterloo and Nth Southwark by people living & working locally. We welcome your letters, news, photos or other contributions. SE1 particularly welcomes contributions from the area's ethnic communities. We would also appreciate more articles from the Waterloo area.

NEXT COPY DATE

Copy date for the next issue of SE1 is Wed 27th May. Publication date is 5th June. All contributions should be sent to 56 Southwark Bridge Road, SE1 OAS.

SE1 AVAILABLE AT

If you want to receive your copy of SE1 regularly, it is available from the Waterloo Action Centre, 14 Baylis Rd, or from the Borough Community Centre at 56 Southwark Bridge Road.

ADVERTISING IN SE1

SE1 newspaper is run on a tight budget and is entirely financed by advertisements. If you would like to advertise your activities, events, organisation, jumble sales, products, services or whatever, you will find our rates very reasonable. To find out more about advertising in SE1 telephone Gerry on 928 0711.

SUBSCRIPTIONS

Subscriber rates to SE1 newspaper are £5 a year for individuals and £15 for institutions. Cheques should be made payable to 'SE1 newspaper' and sent to 56 Southwark Bridge Road, SE1 OAS. We publish ten times a year with double issues during the summer and at Christmas.

SE1 EDITORIAL GROUP

Mary Dimond, John Howes, Dave Scott, S Lievesly, Keib Thomas, G Vignola

JOINING IN

SE1 always welcomes people who wish to help in producing or distributing the paper. Get in touch with us at 56 Southwark Bridge Road.

Youth Work

We are looking for three part-time Youth Workers for our club based in a Community Centre. The Club provides facilities for 7 - 17 year olds on Tuesdays and Thursdays from 7.00 - 9.30pm.

Please send S.A.E. for application form to: Borough Youth Club, 56 Southwark Bridge Road, SE1 Tel: 928 6476



The first 56 houses under construction on the Coin St site are well on schedule. Read about it in our next issue.

CHILDRENS SHOWS and STOP-OVERS

Longfield Loll
Saturday 2nd May, 2pm
'LITTLE ERN'

'Major Mustards Travelling Show'
For 5 - 11 Years

Saturday 6th June, 2pm
'GOGOZAN THE STRONGMAN'
Madame Souhami & Co
For 4 - 11 Years

NETTLEFOLD HALL
1 NORWOOD HIGH STREET, SE27
Box Office:
Tel: 622 6655 x 355

THE LONDON BUBBLE

CLAPHAM COMMON
3 SPECTACULAR SHOWS!

THE HEADLESS BODY
Wed 10th - Sat 13th June
at 7.30pm
Tickets £3 (£2 Concs.)

THE CABINET OF DR CALLIGARI
Friday 12th June, at 10pm
Tickets £2 (£1 Concs.)

THE WILD CHILD
Thurs 11th June at 2pm
Sat 13th at 3pm
for 7 - 11 year olds
Tickets: £1

Tickets from Bubble: 237 4434
Enquiries: 622 6655 x 359
Ask for Paul Griffiths

TEA DANCES

SURREY HALL, BINFIELD ROAD STOCKWELL, SW4
THURSDAY 14TH MAY, 11TH JUNE at 2.15pm
Your hostess: Eve Willett
Dancing to: Russ Pinder Trio
Tickets: 60p
Tel: 622 6655 x 361

TOWN HALL, ACRE LANE, SW2
TUESDAY 2ND JUNE 2 - 5pm
Your host: Trevor Jackson
Dancing to: Dave Kent Trio
Tickets: 60p
Tel: 274 7722 x 2922

LAMBETH AMENITY SERVICES
144 Clapham Park Road SW4
Tel: 622 6655 ext 360/361



Saturday Sausages

LAST SATURDAY OF EVERY MONTH
TICKETS £1

Saturday 30th May, 2pm
'ON THE HOP'

Jelly Childrens Theatre
For 5 - 12 years

LONGFIELD HALL
50 KNATCHBULL ROAD, SE5

Bookings and information:
622 6655 x 355
720 3530