

# SEI

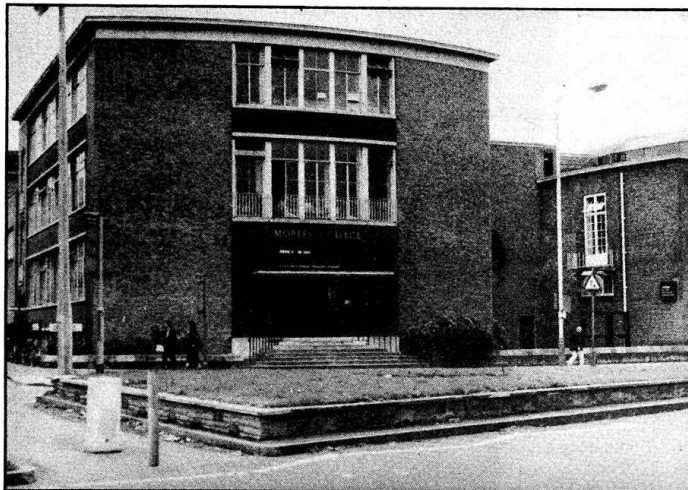
## Lay members quit Morley Council

Representatives of the Association of Waterloo Groups, North Southwark Community Development Group, the Inner London Education Authority, and Lambeth and Southwark Councils, have quit Morley College Council in protest against the actions of the new principal and other staff.

Their resignation letter read in part: "We the undersigned hereby resign our membership of the Council of Morley College. We do so against a background of consistent attempts to prevent the Council, and in particular lay members, from fulfilling their obligations to ensure that the College is responsibly managed and accountable for its use of public funds. We have experienced determined resistance to the setting up of committees to review the work of the College and to advise the Council on its decisions."

"The decision by a majority of members, predominantly paid employees, including the Principal and Vice Principal, to prevent the appointment of a Chair of Council at our meeting of 23rd February is for us the last straw. It is highly irresponsible at a time when the College's future has been jeopardised by the decision to abolish the ILEA and critical negotiations are proceeding with the Department of Education & Science and the London Boroughs of Lambeth and Southwark. We are no longer prepared to remain responsible for the College and the way in which it is run and so are resigning with immediate effect."

There are no longer any representatives of the



Morley College ... trouble at mill

statutory authorities nor nominees of local community organisations remaining on the College Council. The resignations therefore leave the Council with a majority of paid staff and students, an extraordinary position for a charity.

Morley College currently receives virtually all of its running costs from the ILEA. It is both a 'literary institute' serving the Home Counties and an 'adult education institute' serving North Lambeth and North Southwark residents. The abolition of the ILEA threatened all that. But following a huge campaign by students, local groups and the College Council the Government amended the ILEA abolition bill and promised to safeguard Morley's future with central government money.

At the beginning of this year, however, a new College Principal, Janet Roberts, was appointed. She wanted to

squeeze extra money out of Lambeth and Southwark Councils by saying that Morley would not continue local provision unless borough funding was made available. College Council members refused to back this 'get tough' stance and reminded Janet Roberts that their policy was to make across-the-board provision and that this had been a central theme of the campaign over Morley's future.

The Council passed a resolution that future meetings with government officials should only be held if the Chair or Vice-Chair of the Council was present. Despite this, however, the Principal and Vice-Principal held a subsequent meeting with government education officials. No minutes of this meeting were made available to Council members. Shortly afterwards the Minister for Education wrote to the College Council saying that Morley's local education provision would have to be

paid for by Lambeth and Southwark Councils and would not receive central grant aid.

At the next meeting of the College Council, the majority of lay members wanted the election of Elizabeth Monck as Chair following the resignation of the previous Chair Danny Levine. Ms Monck had up till then been the Vice Chair. But staff and student members of the Council, together with one lay member, voted to form a 'search party' to look for a Chairperson outside of the College. This effectively meant that there would be no mechanism for making the Principal accountable on a day to day basis. This prompted the decision of lay members to resign.

The ILEA and the two Borough Councils have been asked to meet to discuss the future of Morley College before making fresh nominations to its Council. A report prepared for the ILEA asks whether it is not now more sensible for North Lambeth and North Southwark residents to be served by the Borough adult education institutes rather than by Morley. This question is particularly relevant in view of the new Principal's policy of moving Morley College towards high-fee, income-generating courses.

### COMMUNITY EDUCATION FORUM

If you are interested in adult & community education in SE1 and SE11, come along to the  
**Annual General Meeting**  
of the Community  
Education Forum of  
Morley College  
Thursday 20th April, 6pm,  
Community Education Building  
King Edward Walk, SE1

### COMMUNITY AND SPORTS CENTRE

THE PLACE TO BE 7 DAYS A WEEK.

COMMUNITY ACTIVITIES AND A VARIETY OF SPORTS

INCLUDING-

KARATE - KEEP FIT - WOMEN'S MORNINGS OF SPORTS WITH CRECHE.

WOMEN'S SPORTS MORNINGS ONLY £1 A YEAR.

FULLY EQUIPPED WEIGHT-TRAINING ROOM, SPORTS AND SOCIAL ACTIVITIES FOR SENIOR CITIZENS.

A VARIETY OF ACTIVITIES FOR 5-18 YEARS OLD.

LIKE TO KNOW MORE, THEN PHONE OR CALL IN ANY DAY AFTER 10 a.m.



TELEPHONE: 01-261 1658

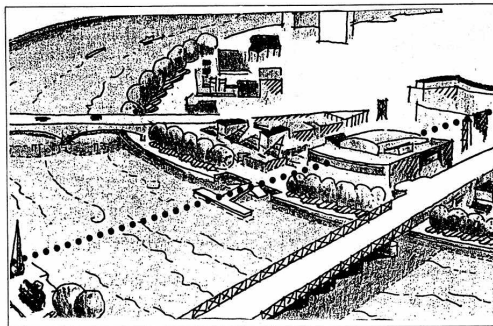
## Plastic surgery proposed for South Bank

The South Bank Board, which oversees the South Bank arts complex, last month launched new proposals to transform the site of London's principal cultural venue.

The £200 million facelift would involve two new buildings. One would enclose the Queen Elizabeth Hall, the Purcell Room and the Hayward Gallery under one roof with new shops, restaurants and public spaces. The other building, on the site of the present Hungerford car park, to the west of the bridge, would contain rehearsal space, offices for new business users, a wide-screen cinema, and a three-tiered underground car park.

The money will be put up by property developers Stanhope, responsible for the mammoth Broadgate office complex at Liverpool Street. They will recoup their outlay by leasing all the new shops, restaurants and offices and share the income from rents with the South Bank Board.

The developers, and architect Terry Farrell, say that their proposals will re-establish the spirit of the 1951 Festival of Britain which took place on the South Bank, bringing 24 hour life to the centre. The aim, state the developers, is to make the South Bank more accessible to a wider audience.



Artist's impression of South Bank changes

The initial reaction to the plans from Lambeth Council, which must decide whether or not to give the proposals planning permission, was not favourable. Lambeth complains that the scheme is too elitist and incorporates nothing new which will be of benefit to local residents.

Cllr Jenny Stiles, Chair of Lambeth's Planning Committee, said the scheme was not sufficiently multi-cultural in its intentions, nor did it cater for popular cultural interests. Lambeth would like to see a public swimming pool incorporated in the development as well as a popular cinema rather than the specialist wide-screen movie

house proposed. These proposals were suggested to the developers before the proposals were drawn up but then ignored.

Waterloo Community Development Group would like to see young children provided for at the arts complex. They say that the childrens play ground in the north west corner of Jubilee Gardens will disappear in the new development and fear that the Gardens will be turned into an ornamental space rather than a park for the public to enjoy.

Other critics argue that the scheme is too commercially oriented. There will be over

300,000 square feet of commercial floorspace in the new complex. The developers say that local residents will be catered for in the choice of shops but it is feared that the high rents proposed will exclude shops of benefit to residents in favour of the fashionable High Street names like Tie Rack and Body Shop. Some 80,000 square feet of offices would also fly in the face of Lambeth's Local Plan, which opposes further office developments in Waterloo.

One of the harshest critics so far of the scheme has been Sir Hubert Bennett, the former Chief Architect of the Greater London Council who designed the original complex more than 20 years ago. Sir Hubert attacked the proposals as lacking architectural merit and being determined first and foremost by commercial considerations. "Londoners", he said, "are getting a scheme put forward by a developer which is without sincerity. It's all showmanship. It will lack quality and will date. Why didn't they have a competition to select an architect for this? You don't select architects in a developer's boardroom full of bankers and businessmen."

If planning permission is granted by Lambeth Council, work could start next year, taking 3 years to complete.

When the new Bill becomes law, it will be forbidden for councils to subsidise rents from the rates. This will mean an increase in rents in Southwark of between £12-15 a week for each household, phased in between 1990 and 1994. As 50% of households in Southwark have an income of less than £100 a week, the effect of a rent increase of that size will be obvious said Cllr Matthews.

Housing benefit would not necessarily rise to meet the new rent levels. Housing benefit rates would be fixed by the government and if rents rose above this level, then the tenant would have to find the extra cost out of their own income. Both Cllr Matthews and Cllr McGettigan agreed that the only hope for tenants in the future was a change of government.

Joseph Healy, Chair, Rockingham Community Association

avoided.

Cllr McGettigan also said that the major problem was lack of government funds for public housing. However, she said that her party, the Social and Liberal Democrats, would be proposing an increase of £1.95 a week in rents rather than the £3 proposed by the majority Labour party. Cllr McGettigan said that improvements could be made in the efficiency of the Housing Department, especially in the repairs service.

One of the most disturbing facts to arise from the meeting was what was in store for the future. The Local Government & Housing Bill currently going through Parliament will have a devastating effect on council rents. Cllr Matthews said that at present Southwark council tenants' rents are subsidised from the rates to the tune of about £12 a week.

## Southwark rents could skyrocket

In February, the Leader of Southwark Council Anne Matthews and Cllr Ann McGettigan addressed the Rockingham Community Association about new rent rises for Southwark tenants.

In 1987, the Council announced rents increases for the following three years of £3 a week, so it came as no surprise for tenants at the meeting to hear that the Council is proposing another £3 a week increase this year.

Southwark Group of Tenants Organisations, representing organised tenants groups in the borough, sent a delegation to the meeting protesting about the proposed rent rise and its effect on the poor of Southwark. SGTO pointed out that 80% of ratepayers in Southwark are council tenants and that the rents increase would affect almost all households in the borough.

Cllr Anne Matthews replied that without the rent increase there would have to be a serious cut in services in Southwark, especially Social Services, which is the largest spending department in the council. She said she was aware of the hardship that the rise might cause but sought to justify it by referring to the council's lack of money.

Cllr Matthews explained that central government is refusing to allow Southwark to borrow money for major housing repairs. This meant that they only had half of the money they needed in the repairs budget. Even so, Cllr Matthews admitted that the increase in rents had not improved the housing repairs position. The rent increases she said were merely to raise general revenue for the council and had meant that large cuts in the borough's overall budget had been

## Local jobs promised at tourist attraction

The Space Adventure tourist attraction in Tooley Street, opposite the Hays Wharf office development, hopes to expand into the neighbouring railway arch with a promise of over 100 new manufacturing and engineering jobs going to local residents.

The company was given broad approval by Southwark Council's Planning Committee last month to enlarge its present tourist facility and move its manufacturing plant from Berkshire to the Tooley Street arches.

In return, the company would undertake to give priority to local recruitment of labour for its manufacturing unit, including on the job training. In addition, they have promised to fit out and provide running costs for a large community facility within the arches. Local community organisations would be invited to run and use the space.

Tooley Street Tenants Association had initially expressed reservations about the enlargement of the tourist attraction because of the volume of extra traffic, especially of coaches, it might generate. After meeting with the owners, however, the TA accepted that the promise of new jobs for local people offset other possible disadvantages.

Nevertheless, Space Adventure's owners must satisfy the Council that they can bring in extra tourists without disrupting neighbouring streets before they get full permission for their proposal. Work is expected to begin in the next 6-12 months, depending on full planning permission from the Council.

The Space Adventure opened several years ago and is billed by the company which operates it as both an educational and entertaining 'tourist theme attraction'.

It consists of a travel module which realistically reproduces the experience of travel through space, 'beyond the Moon to Mars', according to its promoters, depositing its 'travellers' out of the door in Tooley Street after a mere 20 minute 'voyage', feeling, if not necessarily weightless, certainly £3.95 lighter.

## Guy's Hospital opt out feared

Plans by the government to allow public hospitals to opt out of the National Health Service have raised fears locally that Guy's and St Thomas's could be amongst the first hospitals to take such a step.

The government's plans are contained in a recently released 'White Paper' aiming to introduce further changes to the health service by allowing hospitals to form self-governing trusts and GPs to run their own budgets for patient care.

It is widely believed that Guy's is considered by the government as the 'flagship' of a gradual privatisation of the health system. Already, several leading figures at Guy's have spoken in favour of that hospital opting out, among them Mr Ian McColl, professor of surgery, and Mr Hugh Saxton, Head of Guy's Board of Management.

While precise details have yet to be spelled out about the mechanism of hospitals opting out, it is obvious that the support of consultants and management is crucial to the success of the government's plans.

The Lewisham and North Southwark Health Authority, which oversees the work of Guy's, has not yet taken an official position on the matter. A campaign group, Southwark Health Service Support Committee, has recently sprung up which is lobbying against the proposals and has the support of trade unions at Guy's which fear that already low

wages would be driven lower still if the hospital opted out.

The main fear about the opt out proposals is that local people would suffer a worse service from those hospitals which make this choice. These are likely to be the big teaching hospitals such as Guy's which would be able to pursue the market in specialist treatments like heart surgery. Consequently, critics argue that services for local people would be neglected in favour of profitable services which would attract patients from all over the country and overseas.

Commenting on this possibility, Bermondsey MP Simon Hughes said he was "appalled that doctors in Guy's Hospital want to lead the field to opt out of the NHS. Where will local people go if Guy's becomes obsessed with putting profits first? Where especially will the rising numbers of elderly people in South London go if Guy's decides that, for example, hip replacement or long-term geriatric care do not bring in sufficient income and are discontinued?"

Southwark Health Services Support Committee is collecting a petition against any proposals for Guy's to opt out of the NHS which will be forwarded to the Secretary of State for Health. Copies and further details about the campaign are available from Southwark Trade Union Support Committee, 42 Braganza Street, SE17, tel 582 0996.

## St George's Circus under the hammer

The former GLC open space at St George's Circus by Borough Road Library, which was sold last month by the London Residuary Body at auction for £600,000, has been boarded up and contractors have cut down the trees. Southwark Council was unable to prevent this act of vandalism because the trees are not subject to a preservation order.

The owners apparently want temporary permission to turn the site into a car park, with British Telecom, which has offices next door, the likely customer. There is no public indication yet what might eventually become of the site though an office development remains the most likely prospect. That too would require approval by the Council.

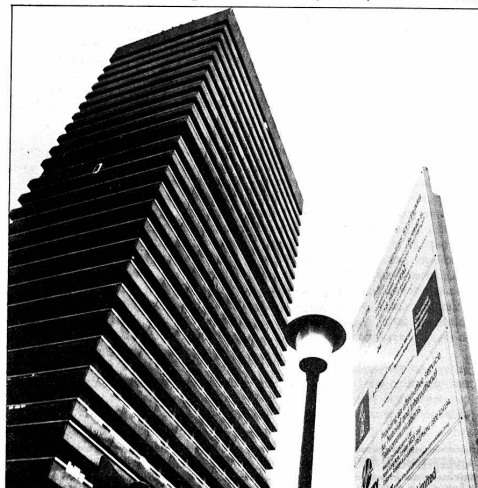
Meanwhile, plans to turn the Royal Eye Hospital site opposite the former open space into a yuppie dormitory have crashed along with the London residential property market.

In May last year, private developers received planning permission from Southwark Council to build around 80 studio flats for sale. After some initial demolition work, activity at the site came to a halt and later a temporary car park was installed, without official approval.

In the meantime, the site has been sold to another property development company which is seeking permission to build business units there. These would be built within a courtyard comprising buildings ranging from 3 storeys in height on the north western side to 7 storeys in height on the Blackfriars Road/St George's Circus frontage. The developer is apparently linked to the Tecnopark at Elephant & Castle which is a development of small business units.

The proposal must receive approval from Southwark Council's Planning Committee. The Committee's Chair, Cllr Geoff Williams, is reported as saying that his preference is for a housing development on the site.

The Eye Hospital, founded in 1857 when it was known as the South London Ophthalmic Hospital, was closed in 1984 and the site has remained empty since.





## Lord Clyde raises record sum for Evelina Childrens Unit

Patrons of the Lord Clyde pub off Southwark Bridge Road, SE1, contributed a magnificent £1,702 at the pub's Valentine's Party towards the Evelina Childrens Wing at Guy's Hospital.

Most of the money was raised through a raffle drawn at the party night, with Dolly, who works at the pub, making a great effort in selling so many tickets. Prizes were donated by the Clyde itself (colour TV), John and Bernie (2 tickets to Phantom of the Opera), P&O Ferries (ferry

crossing) and Ted of the Bankers Trust (5lb tin of sweets).

Staff from Evelina's Appeals Unit were last month presented with the cheque by the Clyde's landlords Michael and Lucy Fitzpatrick. This brings to £3,866 the amount raised by the Clyde for the Evelina Childrens Wing at Guy's in the past two years. The old Evelina Childrens Hospital formerly stood across the road from the Clyde pub where Mint Street Open Space now is.



Clyde landlord Michael with Jill, Vera (Evelina Unit) and Dolly

## GARDENING

WITH  
KEITH THOMAS

Despite March going out 'like a lion' rather than 'like a lamb', this winter has been the mildest for 120 years and the second mildest for 330 years in central London.

Nowhere is this more apparent than the gardens and window boxes of SE1. On Mulberry Housing Coop in Waterloo there is a garden with daffodils and wall flowers next to summer geraniums and fuchsias all in full bloom.

In the same garden, lubelias from last year's bedding plants have also survived and have formed strong mounds of foliage which will give an extra early abundance of flowers when the warm sunshine of late April raises the air temperature.

However, a great deal more pest control will be needed this spring as greenfly and caterpillars have also survived the winter. Slugs are also much in evidence. There are many effective

sprays and slug pellets on the market and the sooner they're used the better.

If you object to using chemicals then you can try spraying plants affected by greenfly with water and washing up liquid. For slug control a saucer filled with beer, buried up to the rim in the soil is quite effective. These natural methods are not as effective as chemical control but they are safer for the family, pets and wildlife.

April is the time for sowing hardy annuals and planting summer bulbs. Before starting, clear out the weed seedlings which have been germinating for the last month. Turn the soil over and if possible add some peat and dig it thoroughly into the soil before sowing and planting. Time and effort put into preparing your ground is rewarded with earlier and larger plants, flowers or vegetables.

## Women in mind

In our last issue we published an article by Lambeth Women in Mind. Because of the response to it, they have asked us to print a follow up which we do below.

Are you having problems? Feeling lonely or under stress? Do you need someone to talk to, or just some information? Then maybe we can help.

We are a group of trained volunteers who, under the experienced guidance of Lambeth MIND (the association for Mental Health) have set up a telephone Helpline for Women, run by women.

We aim to provide a useful support service where women can call to talk with someone who will listen in complete confidence. We are also able to offer information on other services available to women in Lambeth and surrounding boroughs.

So if there is something you feel you need help with, or an opportunity to talk about it, then why not give one of our volunteers a call on: Wednesday evenings, 6.30-9.30pm, and Sunday afternoons, 3.00-6.00pm.

The telephone number to call is 274 1213.

## Poll Tax preparations underway

The Poll Tax, which will replace domestic rates as the form of local government income, will be introduced in Southwark and the rest of London on 1st April 1990.

Southwark Council has already begun distributing forms to every household in the borough and every adult over the age of 18 years will be recorded on a special register and required to pay the tax.

The Poll Tax has been severely criticised as unfair, replacing a levy on property with a tax on people. This means that a wealthy home owner in Dulwich will pay the same poll tax as a low-income council tenant in mid or north Southwark. Households could also be paying considerably more than at present where two or three adults in the same home are each paying the tax.

## Care Centre reps sought

Lambeth Community Care Centre, on the site of the old Lambeth Hospital, provides an individual and personal health care service for local people. They do this by involving local people as much as possible in the decision-making on service provision and use of the building.

The Centre Advisory Group was set up two years ago to provide this opportunity, enabling local people to have a real say in the planning of the health care they receive.

The Advisory Group meets every two months and has 7 staff representatives and 7 community members - 4 individual members and 3 from local community groups. Elections to the Advisory Group will be held at its Annual General Meeting at the end of April.

If you are interested in standing for election or would like to know more about the Centre and its work, contact Paul Walker at Lambeth Community Care Centre, Monkton Street, SE1, or ring him on 582 5513.

## Health march

Two campaigning health groups in West Lambeth and North Southwark have joined forces with other organisations in a "Hands Off" the Health Service campaign.

They will be holding a march on Wednesday 10th May assembling at Guy's Hospital, St Thomas's Street, at 5.30pm going to St Thomas's Hospital where a rally will be held in Jubilee Gardens. The march is to protest against the government's plans encouraging public hospitals to opt out of the National Health Service.

## THE PUBS OF NORTH LAMBETH

A street-corner guide to the pubs of Waterloo, Kennington and Vauxhall yesterday and today

PETER WALKER

Available from the author, 208 Turnpike Link, Croydon, CR0 5NZ, at £2.95

## New broom at Borough Community Centre

The Borough Community Centre has undergone some changes recently. In September last year the two full-time workers, Linda and Shirley, left to take up new challenges. They have been replaced by a new worker, Ruth Ford, who started work at the Centre in November.

Unfortunately, as with many other organisations, the Centre has suffered from the effects of financial cuts and is unable to replace the second full-time worker. Despite this setback, Ruth and the voluntary Management Committee are determined to maintain the present level of activities and add to the Centre's programme.

As Ruth told SE1 "The Centre is quite well used but there are opportunities to improve the services we provide. I'm surprised by the number of people I've met who live locally but didn't know about the Centre and its activities. I want local people to feel that the Centre belongs to them because of course it does. I welcome new ideas for activities and hope that people will feel relaxed enough when they come through the doors to keep coming back."

One of the most recent new activities is the Mother and Toddler group which meets on Wednesday afternoons from 1-3pm. The group is proving to be very popular and a much needed meeting place for local women and their

children. Ruth told us that everyone is welcome at the group and would be assured of a friendly reception.

Future plans include a group for bereaved/separated women and a whole week of events for women. Ruth describes it as a 'playscheme' for women of all ages.

The Centre also continues its long tradition of work with the elderly. North Southwark Pensioners Action Group (NORSPAG) meets twice monthly at the Centre on the first and third Thursday of every month. Here, pensioners who are concerned about the issues affecting themselves and others meet to discuss and plan a course of action to help improve the situation. New members are welcome.

The Centre also provides a Pensioners Pop-in, a very popular lunch club which is open to anyone over 55. Here people can buy light lunches, tea, coffee, read the daily papers, and afterwards play bingo. These are held on Tuesdays and Fridays.

Another service the Centre provides is a weekly advice session on Wednesday afternoons between 2-4pm. Ruth recognises the need for more advice facilities, saying that "not a day goes by without people coming to the Centre seeking help. I will always sit down with someone and try to sort out their difficulties but there is an obvious need for more

advice sessions and I hope to establish these in the very near future."

As an added means of help for people, the Centre is starting a Councillors Surgery. Cllr Hilary Wines will be at the Centre on the first Monday of each month between 10 and 12 in the morning, beginning Monday 6th March and it is hoped that other ward councillors will also run regular surgeries.

Ruth and the Management Committee welcome new ideas and offers of voluntary help to improve the services the Centre is currently providing. The Centre is at 56 Southwark Bridge Road, tel 928 6476.



## Pool marathon aids local hospitals

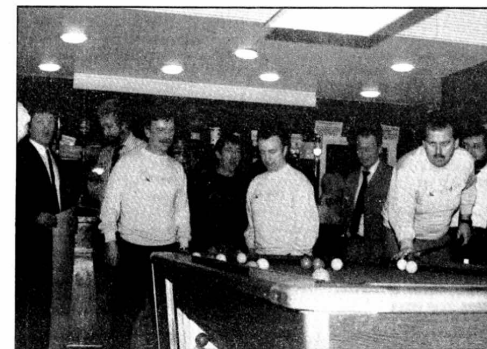
Eight post office workers from the South Eastern District Office in Borough High Street have raised over £5,000 for local hospitals in a Pool Marathon held at the Globe pub in Great Dover Street during Comic Relief Week last month.

The men, playing in two shifts of four, completed 1,500 frames under London County Pool Association rules in 87 hours 48 minutes. They will enter the Guinness Book of Records for the fastest 1,000 frames and the fastest 1,500 frames of pool played.

The pool players, who had great support from their workmates at the post office, undertook the marathon in aid of Guy's Hospital, St Thomas's Hospital and Comic Relief. They were also generously supported by the pub's landlords, John and Marion Spinks and by Post

Office caterers Quadrant who donated £500 to the fund-raising effort. Southwark's Mayor Rita Sergeant was also present to lend her moral support to the cause.

A final count of the money raised has yet to be completed but the post office workers remain confident they will exceed their target of £5,000.



## Support for women on their own

If your husband or partner has died, or your relationship reached separation or divorce, you will understand the problems many women struggle with when this crisis strikes them.

A new group is being set up at the Borough Community Centre where women of all ages can come together under the experienced leadership of psychotherapist Polly Plowman to create between them support for their grief and to share the challenge of what lies ahead.

Any woman living in North Southwark can join, whether her loss is recent or took place some time back. The group proposes to begin in the summer. Membership cost will be small.

When a marriage or long-term partnership breaks up, or a husband dies, the one left behind may well feel as if she's the survivor of a natural disaster or a war. As well as practical problems to do with money, children and work, women also face an assault on their own emotions, in the form of waves of fear, anger, sorrow and despair.

And yet people have surprising hidden resources. "If you consult the generation that survived the Blitz", Polly points out, "they describe vividly the appalling stresses of the war, but in the same breath will refer to the way that people drew together in their troubles and shared them."

In the same way, women affected by the crises of bereavement, separation and divorce are forced to deeper levels of experience and, by sharing, may be able to draw upon aspects of themselves they scarcely knew existed.

The group at the Borough Community Centre hopes therefore to provide a supportive setting where unknown possibilities can be explored together and where pain and problems can be dealt with creatively and with hope.

If you would like to know more about it, either for yourself or for someone you know, phone Polly Plowman on 403 4854 or contact Ruth Ford at Borough Community Centre, 56 Southwark Bridge Road, SE1, tel 928 6476.

## Planning beef at Stamford Wharf

Coin Street Community Builders have decided to carry out the Stamford Wharf development without Inner City Enterprises. The decision was taken in January when it became clear that ICE was nervous of signing a legal agreement which required CSCB to approve all tenants.

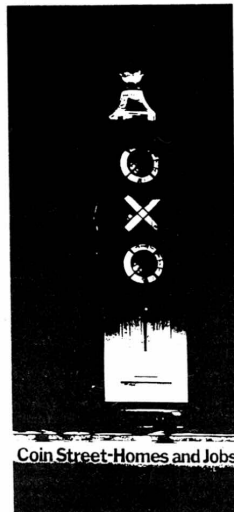
CSCB has appointed the John Brunton Partnership as its architects, Turner and Townsend as its quantity surveyors, White Young as its engineers and Team management as its project managers. A detailed planning application has been submitted and work is scheduled to start in September.

The £15 million development includes 76 co-operative flats together with shared facilities, craft workshops, shopping, cafe, restaurant, exhibition, museum, employment training and performance spaces. Completion is scheduled for summer 1991.

Meanwhile, a second planning application for Stamford

Wharf has been submitted to Southwark Council. This application comes from a group of local people, the Stamford Wharf Development Group (SWDG). Its emphasis is on job creation for local people but it also includes shops, exhibition and performance space, a restaurant and 70 housing co-op flats. According to Coin Street Community Builders, SWDG asked Coin Street Builders last year to give a 200 year lease to a company controlled by Rosehaugh, one of London's largest property developers, who were then to grant a sub-lease to SWDG. This proposal was rejected as impractical and undesirable by the Builders.

Some Waterloo households have received a leaflet "issued by local employment workers" which said the John Brunton Partnership were developers. They are in fact the architects for CSCB's scheme which the Housing Corporation has agreed to fund. Next month's SE1 will contain full details of the SWDG plan.



## Lower Marsh shops under threat

Waterloo Community Development Group has discovered that property developers have started buying up shops in Lower Marsh. The Group has found that shops such as Stanton's on Lower Marsh have been bought up and then closed down by a property company called Nigel King-Lumsden. Three further shops in this local shopping street are also in the possession of this company. They have written to many other shopowners in the Lower Marsh area offering to buy their properties at prices of up to £200,000.

The old Ambulance Station at 150 Waterloo Road was recently sold at auction to an unnamed buyer for £3 million after McDonalds hamburger chain put in an unsuccessful £1.5 million offer. This purchase adds to the picture of considerable property dealing going on at present in Waterloo. It is also rumoured that British Rail wants to buy up the whole of the north side of Lower Marsh for demolition and use as a car park for Waterloo Station.

What is worrying local people is what the property developers plan to do. Waterloo Community Development Group has always maintained that the Channel Tunnel Terminal, to be built at Waterloo, would tempt developers into building hotels, bed and breakfasts and offices in the area. Shops would change from being useful to residents to selling items for the incoming tourists from the Continent. Ominously, recent strategic planning guidance issued by the Government indicates that Waterloo and North Southwark should be considered as areas suitable for hotel developments.

Lower Marsh, as the only shopping street for local residents, could disappear and the market with it. The market is already threatened by BR's plans to close Leakey Street during the terminal construction period which could discourage many office workers from the York Road area from doing their lunchtime shopping there.

You can contact Waterloo Community Development Group on 633 9291 if you have any information on Lower Marsh or if you would like to find out more.

biggest problem, and this we have tackled with jumble sales and similar events. We currently have a lot of interested groups affiliated to us.

At the moment we are seeking other interested persons who would like to become involved in this exciting project for the future. The local licence, based on Brixton, will probably be announced in April, so now is the time to become involved.

For further information, please write to Oval Radio Group, Tenants Corner, 46a Oval Mansions, Vauxhall Street, SE11 5SH - or phone 582 7286.

David Roberts

## Community group seeks local radio licence

Since the Independent Broadcasting Authority announced they would permit a certain number of small radio stations, people have begun to realise that 'big radio' isn't always good for you. Most major radio stations put out material which doesn't necessarily link a community together and people end up feeling more isolated.

The Oval Radio Group was formed with the intention of obtaining a licence - either on our own or linking up with other applicants. Our policy would be to produce programmes for an area including North Lambeth, and parts of North Southwark and Wandsworth.

We would broadcast local

news, information, music and interviews and programmes on local history. There will be of course a special emphasis on programmes for Afro-Caribbean and Asian people and ethnic groups in the area, as well as programmes for everyone.

The aim is to provide equipment so that community groups can come in and make their own programmes. We will be relying on voluntary labour and the contributions of people who are keen to get involved in community radio.

Our first meeting was in October 1988 and since then we have grown from strength to strength, although we are still in our infancy. Fund-raising has been our

including 'Housing Action Trusts' and 'Assured Tenancies'. There will be sessions on 'How to start a Tenants Association' and discussions on the history and future of public housing.

The 'Housing Act' course is being held in the Holland Rise Centre, at the foot of the tower block, on the corner of Clapham Road and South Island Place. A creche is available.

On Tuesdays from 6.30 to 8.30pm, there is another new class called 'Tenants and the

Community'. This covers a broad range of housing and community issues, such as housing, local history, and starting a co-op. The main theme is 'How we can build a strong community'. This course takes place at Tenants Corner, on the corner of Vauxhall Street and Kennington Oval.

Both classes start early April and run for ten weeks. They are being organised by Tenants Corner with support from Lambeth Institute and Morley College. For more information phone 582 7286.

## Housing and community courses for tenants

Two new classes are starting up in the Oval and Vauxhall area, especially for council tenants and private tenants.

On Saturday mornings from 10am to 12 noon, there is a class called 'The Housing Act and How It Will Affect Us'. This course is for tenants who want to find out about the Government's new Housing Act, which could lead to council estates being transferred to private landlords or housing associations.

The course will cover the details of the new Act,

## Southwark Heritage urges DIY clean up

Southwark Heritage Association's first meeting in February about setting up Neighbourhood Care groups turned out to be livelier than expected. This was because the audience, over 80 people, got John Haynes, Head of Southwark Council's Cleansing Services, in their sights and gave him no chance to duck.

John Haynes answered all questions candidly and made no excuses for the low standards of cleanliness of North Southwark's streets. Only the dogged insistence of Canon Peter Challen, the Heritage Association's Chairman, managed to turn the meeting towards voicing positive aspects of what could be done by individuals to clean up Southwark.

The meeting was supported by a personal letter from the Prime Minister, read to those present by Heather Pickering, SHA Director of Tourism Development. Councillor Hilary Wines, member for Cathedral Ward one of the main tourism areas in Southwark, said she fully supported any scheme which

encouraged residents to play a part in looking after their own patch.

Heather Pickering explained SHA's idea of the Neighbourhood Care Scheme in some detail. But when the audience realised that she was recommending they start cleaning their own streets there was stunned silence and some people left the meeting.

Those who stayed expressed dissatisfaction at the lack of Council services - irregular rubbish collections, lack of bins, lack of emptying of those which do exist, holes in the roads and pavements, lack of street and pavement cleaning.

John Haynes explained why many of these services were substandard and which department should be contacted with complaints. He particularly criticised the public authorities, such as British Gas, which make very bad temporary repairs to the roads where they have been making.

Heather Pickering hopes to go forward from the meeting with



DIY street cleaners on parade

interested residents to set up Neighbourhood Care groups. One idea being suggested is a big Clean Up day. A preliminary date off 22nd April, coincided with National Environment Week, has been suggested. It is possible that Southwark Council's Cleansing Division will assist volunteers with some equipment and facilities for the day.

SHA will shortly be circulating a notice to schools, libraries, amenity groups, youth clubs, etc, about the kind of projects to be tackled on the Clean Up Southwark day.

Southwark Heritage Association can be contacted by telephoning 407 5911. They are located opposite St Mary Overie's dock, Clink Street.

## Public Works drags its feet on considerate contractor initiative

Southwark Council's Department of Public Works has been harshly criticised by the Cathedral Area Residents Association for its virtual neglect of the Park Street area on Bankside. The Association's Chair, Jackie Power, has termed their inaction "a dereliction of duty to the public".

The Park Street area is presently subject to intense office building activity on no less than seven separate sites, including new offices for the national daily newspaper the Financial Times and the future Globe Theatre. Midland Bank is also building new headquarters for its cheque sorting operations in Park Street which when complete will see over 700 people working there.

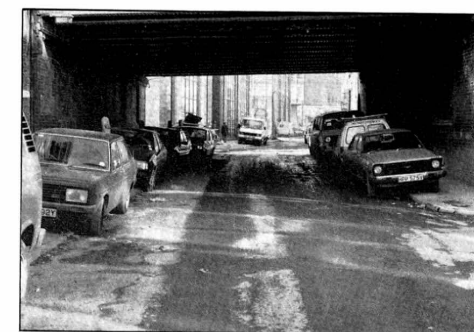
For many months now, Park Street residents have had to live with huge lorries rumbling through the tight streets of the Borough Market area, 7-day a week demolition and building, obstructions to the roads and footpaths, illegal car parking, dumped building materials and a host of other inconveniences. When the rain, the Park Street and surrounding streets are a sea of mud and virtually impassable.

The roads in the area, and particularly Park Street, have deteriorated into virtual dirt tracks with gaping potholes and broken kerbs. The Public Works Department appears to have all but abandoned the area to the developers and building contractors who now use the streets as an extension of their building sites.

The Residents Association has made numerous complaints to Public Works almost to no avail. Through local pressure group, North Southwark Community Development Group, they have twice written to Councillor Roy Kennedy, Chair of the Public Works Committee, asking him to set up a meeting with the seven building contractors working in Park Street to discuss the situation in the area.

The Residents Association initiative is based on the 'considerate contractor' scheme operated by the City of London Corporation which obliges building contractors to agree to a code of practice on their sites which respects the people living and working in the area.

The Corporation acts against contractors who leave the streets filthy or otherwise



Park Street ... no-go area for residents

abuse the area through a telephone hotline which receives complaints from the public. Two full-time council enforcement officers are also constantly touring building sites alert to infractions of the code of practice and council bye laws governing the environment.

The Residents Association even supplied all the names and telephone numbers of the contractors in Park Street to make the Council's job easier. Despite their having written first in December,

and received a reply at the end of January that the Council was following up the suggestion, no further action has been taken by Public Works.

In the meantime, one of the Park Street contractors, Norwest Holst, has written to Cathedral Area Residents Association suggesting a meeting with local residents who are now considering bypassing the Council altogether in their efforts to restore some sort of normal life to the area.



## United St. Saviour's Charities

### Flats for retired people of North Southwark

We have vacancies for retired people who at present live in the North Southwark area (including Newington and Walworth) and who would like to move to our attractive sheltered housing scheme at Hamilton Road, West Norwood.

There are flats available for people who would normally live alone, but sometimes we can offer adjoining flats to sisters, to brothers, or friends, if the situation warrants it.

All our flats are rent and rate free and are provided with central heating and constant hot water at no extra cost.

To be eligible for an appointment to a flat, applicants must have lived in the North Southwark catchment area for at least three years, be of limited means (i.e. basic income the Old Age Pension), be of good health and be able to look after themselves.

If this applies to you or someone that you know and you would like more information about it, please contact:

The Clerk  
United St. Saviour's Charities  
The Offices  
8 Southwark Street  
London SE1 1TL

Telephone: 407 5961



## Borough Community Centre

### PART-TIME ADMIN WORKER

Needed to assist Full-time Centre Worker  
10 Hours a week (over 3 days to be arranged)  
Pay - £5 an hour

Duties will include typing, filing, organising correspondence, answering the telephone and generally helping in the office.

Person appointed will need a mature and friendly personality, and be able to work unsupervised at times. This job may suit a person with child-care commitments.

Please apply for an application form either in writing to Ruth Ford, Borough Community Centre, 56 Southwark Bridge Road, SE1, or ring 928 6476.

Closing date for applications: Friday 21st April, 1989

## The Lord Clyde

Michael, Lucy and the staff

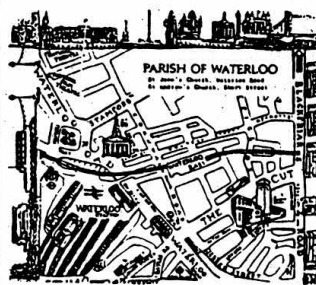
wish to thank all our friends and customers  
for their magnificent support at the Valentines Party,  
for the Evelina Childrens Appeal Fund,  
which raised £1,702.

Don't forget - Saturday November 4th,  
Guy Fawkes Night Party  
is our next Evelina party night.

**your local pub**

Lord Clyde: 27 Clenham Street, SE1

## THE CHURCH OF ENGLAND PARISH OF WATERLOO



### Come and worship

#### Sundays

10.30am Parish Communion  
St John's, Waterloo Road

#### 6.30pm Evening Worship

St Andrew's, Short Street

#### During the week

12.30pm Holy Communion  
St John's, Waterloo Road

#### Vicar

The Revd. Rob Yeomans  
633 9819 or 928 4470

**MEASURE  
FOR  
MEASURE**  
by William Shakespeare  
directed by David Thacker  
designed by Fran Thompson  
lighting by Jim Simmons

*The Young Vic*  
13-22 April 1989  
BOX OFFICE  
01-928 6363  
44 The Cut, London SE1 8LZ  
Waterloo

## THE LABOUR PARTY

is campaigning against the  
Poll Tax, the Housing Act,  
and the Channel Tunnel  
rail link.

Do you want to join us?  
Fill in the form below...

Name:.....

Address:.....

.....

.....

I wish to join the Labour  
Party

Send to:  
The Labour Party  
Freepost  
195 Walworth Road  
London SE17

# SE1

SE1 newspaper is produced for residents of Waterloo and Nth Southwark by people living & working locally. We welcome your letters, news, photos or other contributions. SE1 particularly welcomes contributions from the area's ethnic communities.

### NEXT COPY DATE

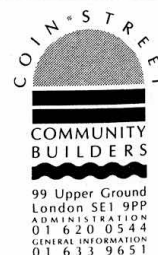
Copy date for the May issue of SE1 is Wed 26th April, 1989. Publication date is 4th May. All contributions and correspondence of any kind concerning the paper should be sent to 56 Southwark Bridge Road, SE1 OAS.

### SE1 AVAILABLE AT

If you want to receive your copy of SE1 regularly, it is available from the Waterloo Action Centre, 14 Baylis Rd, from the Borough Community Centre at 56 Southwark Bridge Road, Charterhouse-in-Southwark at 40 Tabard Street, John Harvard Library, Borough Road Library, and Blackfriars Settlement at 44 Nelson Square.

### ADVERTISING IN SE1

SE1 newspaper is run on a tight budget. We are entirely financed by advertisements. If you would like to advertise your activities, events, organisation, jumble sales, products, services or whatever, you will find our rates very reasonable. To find out more about advertising in SE1 telephone Gerry on 928 0711.



We often need additional help (typing on word-processor, post in/out, photocopying, etc.) and are looking to build up a pool of people who could be called upon at short notice.

Minimum typing speed 50wpm  
Training will be given on specific tasks.  
Must be on telephone.  
Hourly rate: £8

Please contact CSCB on  
620 0544