

SEI

New homes opened on Courages site

The official opening of new public housing on the former Courages site in Park Street took place at the end of last month. The opening ceremony was attended by the Deputy Mayor of Southwark, Cllr Rita Sergeant, and other Southwark councillors, and representatives of the construction firm Llewellyn.

The first 55 dwellings which form part of Phase I have been completed and many have already been tenanted. Many of the new tenants, all in housing need and on Southwark's housing waiting list, who are delighted with their new homes, were also at the opening ceremony. Designed by Southwark Council architects, the family houses all have small gardens and share an internal, landscaped courtyard and playspace for children.

Speaking at the opening ceremony, former Chair of the GLC's Planning Committee, George Nicholson, reminded those present that it was in 1981 that the old Courage's Bottling Plant, by Southwark Bridge, closed down with the loss of 2,000 jobs.

Because the site was a prime office location, he went on, there was great pressure for the commercial redevelopment of the site. However, a determined campaign by local residents and groups ensured that the site would be



Guests at the opening of the new Courages site homes

developed for community uses when the GLC, under its Community Areas Policy, bought the site in 1983. Since then, plans for new homes, a sheltered housing complex and small industrial workshops have been built on the site under plans drawn up by the GLC and Southwark Council in conjunction with

North Southwark Community Development Group. When the GLC was abolished, Southwark Council took over the implementation and ownership of the development.

When a further 19 homes are completed in July under Phase II, the Courages site will contain 120 new and

refurbished dwellings, in addition to the 37 place sheltered housing unit. In six years, Courages has been transformed from an abandoned site to a thriving community with nearly 300 new residents, tilting the balance, at least a little bit, away from the domination of the area by offices.

LDDC huffs and puffs over Odessa Wharf

Odessa Wharf is vacant site on the riverfront at Bermondsey Wall West, owned by Southwark Council.

The developers of the Jacobs Island site, behind Odessa Wharf, held negotiations with Southwark Council in 1987 to purchase the Wharf to include in their development, but Southwark did not wish to sell, wanting instead to build public housing there. They sought planning permission in December 1987 to do so from the London Docklands Development Corporation,

planning overlords of Southwark's riverfront.

The LDDC, however, refused permission on the grounds that they had envisaged Odessa Wharf being landscaped as a river viewing point. This policy was contained in a strategy approved by the LDDC in October 1985, but only publicly revealed in August 1988!

In April 1988, against persistent and vocal opposition from local residents, the LDDC granted permission

for the Jacobs Island Company to build 345 residential units in the Bermondsey Wall West area. The planning application from Jacobs Island Company included Odessa Wharf as riverside open space.

In the meantime, Southwark appealed to the Secretary of State for the Environment against the LDDC's decision to refuse Southwark permission to build public housing on Odessa Wharf. In response, the LDDC applied to Parliament for an order to

compulsorily purchase the site from Southwark Council.

In December 1989 Southwark lost its appeal to be allowed to build homes at Odessa Wharf. It has since negotiated terms with Jacobs Island Company over the site which means that it would be landscaped by the developers as open space but would remain in public hands forever. Now that the terms have been agreed between developer and Southwark, will the LDDC desist from compulsorily purchasing Odessa Wharf?

Venice on Thames in Tooley Street

Building work could begin soon on the second phase of 'London Bridge City', the office development which runs the length of the riverfront between London Bridge and Tower Bridge.

The whole of the site is owned by the Kuwaiti Investment Office and was the subject in 1981 of a big planning inquiry at which local people fought to have the site used for social housing and other community purposes. Permission was later given by the Government, when Michael Heseltine was Secretary of State for the Environment, for a huge office and commercial development.

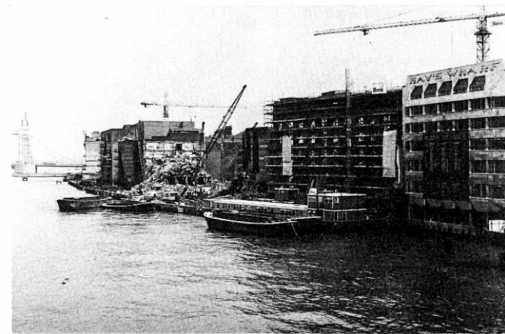
Soon after the completion of the first phase of London Bridge City in 1988, all of it now let, comprising 1 million square feet of offices, the owners of the site submitted a planning application for the development of a further 1.2 million square feet of offices on the part of the site nearest to Tower Bridge. Uproar greeted the design for the proposal which was dubbed the 'Mock Houses of Parliament' because it was almost an exact replica of

the real thing further up the river.

The owners then commissioned a further two designs for the site. The three schemes in question were then the subject of another public inquiry last year, at which local people argued that none was suitable. Approval, however, has been given to a scheme which has been dubbed 'Mock Venice', because its buildings imitate the style of architecture of Italy's

most famous city. Simon Hughes MP has argued that, together with Tower Bridge and the Tower of London, the area is in danger of becoming an architectural theme park.

Given the depressed state of the property market, though, there is some doubt about how quickly construction work will begin. Indications are that the owners will want to make sure that the scheme is pre-let to occupiers before laying the first brick.



Demolition on Rays Wharf, prior to the construction of phase I of London Bridge City

Salvation Army hostel to close

The Salvation Army intends to close its 230 bed hostel for homeless men in Blackfriars Road, near St George's Circus, within the next 12 months. According to the Army, the cost of bringing the building, originally intended as a tram depot, up to required space and safety standards would be £350,000. This is money it says it does not have due to a shortfall in its social services fund.

Last year, Southwark Council issued the hostel with an overcrowding notice requiring the closure of 80 beds. This, together with the cost of improving the building, prompted the Army to consider what to do about the Blackfriars Road hostel in advance of an overall review of the Salvation Army's future plans for meeting the needs of London's growing army of homeless.

The Army decided to put the site up for sale. Conditional contracts for the sale of the hostel have been exchanged with the owners of the adjoining Royal Eye Hospital site which has planning permission for an office development.

The condition in the contract for the sale of the hostel appears to be that the purchase would only go ahead if the developers received planning permission to demolish the hostel and extend their office development north from the Eye Hospital. They would, however, require planning permission to do so since this involves a change of use of the Salvation Army hostel from residential to office uses. This would be contrary to Southwark Council's policies.

The proposed sale of the hostel has therefore raised various questions, not only about the future of the site itself, but also about the future of the homeless men whose only accommodation is provided by the hostel. Discussions have therefore involved Southwark Council's Planning, Housing and Social Services Departments which are formulating a joint response.

Negotiations also involve the future of another of the Salvation Army's hostels in Spa Road which they intend to refurbish to provide

accommodation and training facilities for the homeless.

The Salvation Army has said that it hopes that Southwark Council may rehouse some Blackfriars Road residents who qualify for local authority housing because of their age or vulnerability. Many of the hostel's residents are mentally ill, discharged from hospitals under the Government's so-called 'care in the community' programme. The psychiatric team from Guy's Hospital assigned to provide such care though is in danger of having its budget cut.

The Army has also said that it will attempt to find accommodation for the remaining men in housing association facilities and other hostels. There are as yet no firm proposals and the danger is that closure of the Blackfriars Road hostel could lead to a net loss of bed spaces at a time of crisis for London's homeless.

The Army, the UK's largest provider of accommodation for the homeless, will not in future build any more hostels of the Blackfriars Road type.

Life after dark in SE1

You might know it as the 'Four Counties' health food bar in Flat Iron Square, Union Street, but in the evenings, from 9pm 'till late, while the salads are in bed, it is transformed into one of London's best new jazz clubs - the 'Cafe Club'.

Already popular and less than a year old, the club hosts some of the best names on the London jazz circuit. It is slightly clandestine - the entrance is a side door on which someone has pinned a piece of paper with 'Cafe Club' written on it - and has an intimate, if somewhat smokey, atmosphere.

The clientele is very varied, from off-duty jazz musicians and MPs to local people of all ages. Because it is small it remains personal, despite being packed out and slightly raucous. Rupert, who manages the Cafe Club (doubling as barman), and Paul, the chef, know all their regular customers by name and spend most of the evening chatting with them.

Food is mainly macrobiotic but Paul also makes delicious crepes and pizzas. There is no entry charge but drinks are quite expensive, £1.50 for a bottle of beer, £7.50 for house wine.

It's very crowded from Thursday to Saturday - when they have live music - so it's best to reserve a table in advance. Phone 378 1988 or call in at lunchtime.

Susan Demuth

Care Centre AGM

Lambeth Community Care Centre, on the site of the old Lambeth Hospital, has been established four years and is constantly looking for ways to involve the local community in the provision of health care.

The Centre has an Advisory Group, which was established for this purpose of involving the local community. The Annual General Meeting of the Centre Advisory Group will take place at the end of this month and promises to be a lively meeting, open to the whole community.

All local residents are welcome to attend the AGM which will be held on 26th April, at 7.15pm at the Lambeth Community Care Centre, Monkton Street, SE11. For further information, ring 582 5513.

Hope springs eternal at Tadworth Playgroup

On a sunny Spring morning in March, the joyful shouts and screams of children's voices betray the whereabouts of Tadworth Playgroup in the unlikely location of Tadworth House, on the corner of Webber Street and Blackfriars Road.

In a flat leased from Southwark Council at a peppercorn rent, the children, all pre-school age, are amusing themselves under the watchful eyes of playleader Rita Lawrence, who has worked with children for the past 20 years, assistant playleader Tina Pellatt, and Jackie Amadio, the voluntary Chair of the parent management committee which runs the playgroup.

For the needs of the playgroup, the flat could be bigger and goes to show how nurseries, which are a vital and much needed community facility, are chronically under-funded and not given the financial support they deserve. The outdoors roof terrace, however, makes up for the lack of space inside and allows the children to race around on the new tricycles which the nursery bought after fundraising at the Elephant & Castle shopping centre.

The parents and workers at Tadworth Playgroup, including part-time cook Carol Roy, are constantly on the lookout for new ways of raising money for the needs of the nursery, such as toys and equipment or repairs to their premises.

Started 20 years ago by Save the Children Fund, the Playgroup is now parent-managed but still receives a small grant from Save the Children Fund for staff wages. Fees of £10 a week for children who attend full-time and £4 a week for children attending part-time, as well as fundraising, supplement grant income. However, this grant will soon be withdrawn and the Play-

group hopes that Southwark Council's Education Department will agree to take up the funding. There have already been staff cuts and the present staff have had to take a drop in wages because of the funding difficulties.

Presently, there are sixteen children who attend the Playgroup, twelve full-time, from 9.30am to 2.30pm and four part-time, from 9.30am till 12.15pm. Demand for places, however, is considerable and there are around 25 children on the waiting list, most of whom are referred there by health visitors from the neighbouring St George's Clinic or the Princess Street GP's practice. The children come from the Blackfriars, Borough and Elephant & Castle areas and are mostly from single parent families.

As a result, the Playgroup not only provides a caring and safe environment where children can meet and play with those of their own age, but allows the parent to work for the family income. As Jackie Amadio pointed out, however, the limited nursery hours, even for children who

attend full-time, means that the job is likely to be part-time and often in cleaning.

Rita Lawrence explained to SE1 that about six of the children at the Playgroup have learning or speech difficulties. Consequently, they work very closely with speech therapists from the Newcomen Centre at Guy's Hospital to overcome these difficulties. This is a valuable aspect of the work of nurseries which often goes unrecognised.

One of Tadworth Playgroup's main fundraising projects at present is aimed at providing a non-abrasive covering for the roof terrace, presently surfaced with concrete. The Playgroup has playground equipment such as slides which they can't mount because of the danger of the concrete surface to the children. They have raised around £500 towards the cost but still have much more to raise to meet their target. If any reader would like to make a financial contribution to this project, please contact the Playgroup on 928 7048, during the daytime.



Staff and children at Tadworth Playgroup

Wheelclamping introduced on North Southwark estates

Southwark Council has introduced a pilot wheelclamping scheme on housing estates currently besieged by commuters in the north of the borough. Over fifty commuters have been wheelclamped since the scheme began in February.

The pilot schemes was particularly introduced for estates close to London Bridge Station and Guy's Hospital. To the frustration of tenants, commuters use

housing estate courtyards to park their cars, often blocking access to service and emergency vehicles.

This is a long standing problem and has worsened in recent years as North Southwark has become a significant office location. A contractor has been hired to carry out the wheelclamping service on designated estates on a self-financing basis. The release fee for a clamped

commuter is £50.

Many local groups have long argued for the introduction of wheel clamping on the streets as well as estates. Illegal parking has now got out of control in North Southwark. The problem is made worse by the frequent digging up of roads. Yellow lines are frequently not replaced, or are only reinstated after a long delay, allowing commuters to park with immunity.

St Thomas's and Guy's staff reject hospital opt out plans

In an official ballot, staff of West Lambeth Health Authority last month voted overwhelmingly against plans for St Thomas's Hospital to 'opt out' of health authority control and become a self-governing trust under the Government's new health proposals.

The ballot, organised by the Electoral Reform Society, was the first to be conducted by a health authority on the controversial issue of 'opting out'. It produced a vote of 82% against the proposal.

On the voting form, staff were asked: Do you support the application of St Thomas's Hospital and the priority care service to become an NHS trust? Around 60% of West Lambeth Health Authority staff returned their ballot forms, with 550 votes in favour of the proposal and 2,499 against.

In the Lewisham and North Southwark Health Authority, in a similar, but unofficial, ballot organised by the 'Hands off Guy's Campaign', staff at Guy's, Lewisham, Hither Green and Sydenham Children's Hospital also voted overwhelmingly last month against plans for hospitals to opt out of local health authority control. The final result was 134 in favour (9.3%), and 1,320 against (90.7%).

Government Health Ministers dismissed the result of the Guy's ballot on the ground that it was not impartial, but will find it hard to ignore this and the St Thomas's vote which show that hospital staff are opposed to interference with the present management of public hospitals. The Guy's result in particular will be a stinging rebuff to the Government which proposed to make the hospital the 'flagship' of changes to the health service.

Managers at Guy's and St Thomas's Hospitals who had been behind the opt out moves, together with a number of leading consultants, were keeping a low profile after the ballots. The ballots are only an expression of staff opinion and are not binding on managers and consultants who are still determined make hospitals self-governing trusts.

EDUCATION

COLLEGES

Morley College, 61 Westminster Bridge Road, SE1 7HT, 928 8501
Southwark College (Waterloo Branch), The Cut, SE1 8LE, 928 9441

INTERMEDIATE TREATMENT SCHEMES

Junction Project, Northcote House, 37 Royal Street, SE1 928 8264
North Lambeth Intermediate Treatment, 331 Kennington Lane, SE11, 735 1151

LITERACY SCHEME

Blackfriars Literacy Scheme, 47 Nelson Square, SE1, 928 5116, Mon-Thur, 10.00am - 3.00pm

POLYTECHNIC

Polytechnic of the South Bank, Borough Road, SE1 0AA, 928 8989

UNIVERSITY

Schiller International University, Royal Waterloo House, 51-55 Waterloo Road, SE1 8TX

PRIMARY SCHOOLS

Archbishop Sumner's Church of England School, Reedworth Street, SE11 4PH, 735 2781, 5-11 years
Cathedral School of St Saviour and St Mary Overie, Redcross Way, SE1, 407 2600, 5-11 years
Charles Dickens School, Lant Street, SE1, 407 1769, 5-11 years, nursery class
Charlotte Sharnan School, St Georges Road, SE11 4SN, 735 5598, 5-11, one nursery class
Ethelred Nursery School, 3 Hotspur Street, SE11 600, 582 9711, 3-5
Johanna School, Johanna Street, SE1 7RH, 928 5814, nursery class
St Joseph's, 148A Borough High Street, 407 2642, 5-11
Vauxhall School, Vauxhall Street, SE11 5LG, 735 4535, 5-11, one nursery class
Walnut Tree Walk School, Walnut Tree Walk, SE11 6DS, 735 1402, 5-11, one nursery class

SECONDARY SCHOOLS

Lilian Baylis School, Lollard Street, SE11 6PX, 735 3105
London National School, Stamford Street, SE1, 735 3105
For boys and girls aged 3-16 with severe learning difficulties

ELDERLY

HOMES

Bland & Burchell House, Jonathon Street, SE11, 735 3094
Denby Court, 99 Lambeth Walk, SE1, 582 7795
Malam Court Sheltered Flats, Marylee Way, SE11, 735 7196
Rupert House Sheltered Flats, 225 Kennington Road, SE11, 582 6474
Tomkyns House, off Lollard Street, SE11

LUNCHEON CLUBS

Borough Community Centre Pensioners Pop-in, 56 Southwark Bridge Road, SE1, 928 6476, light lunches, tea & coffee, papers and bingo, Tue & Fri
Caine Hall Family Centre, Tyers Street, SE11
Lambeth Towers, 80 Kennington Road, SE11, 735 0039
Waterloo Action Centre, 14 Baylis Road, SE1, 261 1404

SENIOR CITIZENS CLUBS

Barley Mow Group, Barley Mow Clinic, Frazier Street, SE1, contact WAC on 261 1404
Caine Hall Family Centre Day Care for Senior Citizens, Tyers Street, SE11 5HS, Mon-Fri 10.30-3.15. Home cooked lunch, transport available, facilities for disabled. Activities include keep-fit, local history, arts and crafts, and organised outings.
Colombo Street Community & Sports Centre, Colombo Street, SE1 8DP, 261 1658. Bingo and social club Mon & Thurs 2.00-4.00pm
Handshake Club, Vauxhall Methodist Church Hall, Worgan Street, SE11, Thurs
Lambeth Towers Day Centre, 80 Kennington Road, SE11 735 0039
Monday Pensioners Club, Waterloo Action Centre, 14 Baylis Road, SE1, 261 1404
North Southwark Pensioners Action Group, Borough Community Centre, 56 Southwark Bridge Road, SE1, 928 6476, Meets 1st and 3rd Thurs of the month
Pensioners Friday Club, St Jude's Centre, St George's Road, SE1, 928 9840, Fri 1.30-3.30pm

Prince's Community Centre, 91 Kennington Lane, SE11, 582 0678, Thurs 4.00-5.30pm
Tomkyns House Community Centre, off Lollard Street, Ethelred Estate, SE11

EMPLOYMENT

CAREERS OFFICE

Elephant & Castle, Castle House, 2 Walworth Road, SE1 6ST, 702 6276

EMPLOYMENT OFFICE

Keyworth House, Keyworth Street, SE1, 928 8077

ESCAPE COFFEE BAR

Caine Hall Family Centre, Tyers Street, SE11 5HS, 735 1434, Mon, Wed, Fri 12 noon-4.00pm

JOB CENTRE

92-94 Borough High Street, SE1, 403 2055

LESBIAN EMPLOYMENT RIGHTS

Room 205, Southbank House, Black Prince Road, SE1 7SJ, 587 1636
Drop-in: Tues 11.00-5.00pm

LONDON HAZARDS CENTRE

Polytechnic of the South Bank, 103 Borough Road, SE1 0AA, 261 9558. Interested in and has information leaflets on all aspects of environmental and work hazards.

SOUTHWARK WOMEN'S TRAINING WORKSHOP

164 Union Street, SE1, 261 0575
Offers six month courses in carpentry and joinery.

WATERLOO EMPLOYMENT PROJECT

Colombo Street Community & Sports Centre, Colombo Street, SE1, 928 8024. Advice service Thur 2.00-5.00pm. Waterloo Action Centre, 14 Baylis Road, fortnightly advice service on Wednesdays 12-2pm

PEOPLE WITH DISABILITIES

BLACKFRIARS SETTLEMENT WORK CENTRE

Open 10.00am-5.00pm. For people with disabilities to do work to earn money.

ROOTS AND SHOOTS

Walnut Tree Walk, SE11, 587 1131.
YTS scheme for youngsters with disabilities - horticulture, catering, etc.

HALLS FOR HIRE

COMMUNITY HALLS

Alford House, Aveline Street, SE11 5DJ, 735 1519. Contact P Saunders.
Capacity: 250
Borough Community Centre, 56 Southwark Bridge Road, SE1, 928 6476
Capacity: 150
Colombo Street Community & Sports Centre, Colombo Street, SE1 8DP, 261 1658. Contact Tom Hogan
Capacity: 350. Disabled access
Ethelred Estate Youth Club, Lollard Street, SE11, 582 2012.
Contact Fred Peters. Capacity: 200.
Disabled access
St Johns Crypt, 73 Waterloo Road, SE1, 633 9819. Capacity: 90
Vauxhall Centre, Walnut Tree Walk, Kennington Road, SE11 6EA, 735 6212.
Contact Mrs Becker. Capacity: 50
Waterloo Action Centre, 14 Baylis Road, SE1, 261 1404.
Contact Ms A McKay. Capacity: 100.
Disabled access

PUBLIC HALLS

Edric Hall, 103 Borough Road, SE1 0AA, 928 5849. Capacity: 300
Morley College Community Building, 61 Westminster Bridge Road, SE1, 928 8501. Contact Anne Dolan ext 155
Morley College Theatre, as above, contact ext 46
Southbank Polytechnic, Borough Road, SE1, 928 8989. Contact conference organiser.

CHURCH HALLS

St Andrew's Church Hall, Short Street, SE1, 633 9819
St Andrew's Studio Theatre, as above. Contact the Administrator.
Disabled access.
St Anselm's Church Hall, Kennington Cross, SE11, 735 3403. Contact Angela Alderman. Capacity: 80
St John's Church, Waterloo Road, SE1, 633 9819, Contact the Administrator. Capacity: 350

HEALTH

Cornwall Road, SE1, 928 4818
Sunday Services: Masses 9.00am, 11.00am & 5.00pm
Weekday Services: Masses 8.00am (Mon - Fri), 12.30pm

ACUPUNCTURE

Traditional Acupuncture Clinic, 75 Roupell Street, SE1, 928 8333

AIDS/HIV

Black Communities AIDS Team, Room 203, Southbank House, Black Prince Road, SE1 7SJ, 671 7611, Mon-Fri 9.00am-5.00pm. Offers practical help and support to black people who have AIDS or are HIV positive.
Guy's Hospital, 407 3357, AIDS direct phone line
St Thomas' Hospital, 922 8025, direct phone line. Outpatient unit for people who have AIDS or are HIV positive.

ALCOHOLICS

AA - Alcoholics Anonymous. Meet at Lambeth Community Care Centre. Contact 582 5513.
A 1 Anon. Meet at Lambeth Community Care Centre, 582 5513. Support group for friends and relatives of alcoholics.
Alcoholics Recovery Project, 68 Newington Causeway, SE1, 403 3369. Shop front where people can drop in. Open Mon - Fri mornings.

CHIROPODISTS

Barley Mow Clinic, Frazier Street, SE1, 720 6551 ext 44,
Tue 1.00pm-3.00pm. Phone for appointment
Lambeth Community Care Centre, Monkton Street, SE11, 582 5513
Lambeth Towers, 80 Kennington Road, SE11, 735 0039
Moffat Health Centre, 65 Sancroft Street, SE11, 735 4169, Mon - Fri afternoons. Phone for appointment
St George's Clinic, Blackfriars Road, SE1, 928 2626

HEALTH CLINICS

Barley Mow Community Health Services Clinic, Greet House, SE1, 928 5921
Moffat Community Health Services Clinic, 928 5921, 928 9922

COMMUNITY CARE CENTRE

Lambeth Community Care Centre, Monkton Street, SE11, 582 5513. Residential care for those who do not need the services of a general hospital, but need nursing. Respite for carers. Also chiropody, dentistry, physiotherapy, speech therapy, occupational therapy.

COMMUNITY HEALTH COUNCIL

West Lambeth Community Health Council, 2 Cleaver Street, SE11, 582 3288, Mon - Thur 10.00am - 4.00pm
Advice on all health matters in Waterloo, Kennington, North and South Lambeth
Lewisham & North Southwark Community Health Council, 13 Catford Broadway, SE6, 690 8777. Covers North Southwark.

ELDERLY PEOPLE

Exercise Class, St George's Health Centre, 151 Blackfriars Road, SE1, 928 2626, Mon 10.30am-12.00 noon.
Run by clinic nurse. Open to all but mostly senior citizens attend.
Health Screening for the Elderly, Barley Mow Clinic, Greet House, Frazier Street, SE1, 928 5921. Free screening (blood pressure, urine testing, etc) for anyone over 60. Phone for latest details.
Pensioners Health Group, Barley Mow Clinic, Greet House, Frazier Street, SE1, 928 5921, Wed 10.00am-12.00 noon

EMERGENCIES

Casualty, Guy's Hospital, St Thomas Street, SE1, 407 7600
Casualty, St Thomas Hospital, Lambeth Palace Road, SE1, 928 9292, Open 24 hours

FAMILY PLANNING

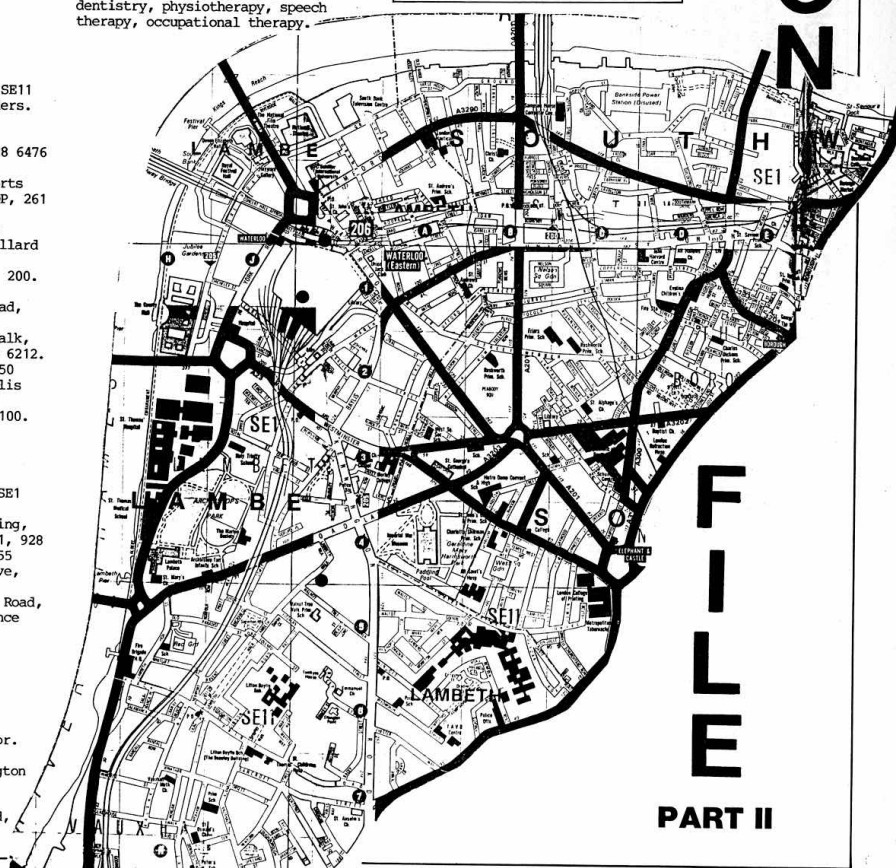
Barley Mow Community Health Services Clinic, 928 5921, Fri 9.30am-11.30am
Brook Advisory Centre for Young People (held at Moffat Community Health Services Clinic, 735 4169, Wed 4.30pm-7.00pm, Sat 9.30am-11.30am
Moffat Community Health Services Clinic, Tue and Fri 9.30am-11.00am, Thur 5.30pm-7.00pm
St Thomas' Hospital, Tue 1.00pm-3.30pm

FAMILY PRACTITIONERS COMMITTEE

75 York Road, Waterloo, SE1, 620 0414, Covers Lambeth, Lewisham and Surrey

The Local Information File has been compiled by

users who live in both SE1 and SE11, the File covers services and facilities in parts, but not all, of these two postal districts. The File will be continued in future issues of SE1.



LOCAL INFORMATION

FILE

PART II

Educating the children at Charles Dickens School

Two recent important changes in education have been the introduction of the National Curriculum for children aged 5-16 in state schools and the abolition on 1st April 1990 of the Inner London Education Authority. Control over education has now been handed over to the Boroughs.

To see how these changes will affect local schools, SE1 spoke to the Headteacher of Charles Dickens School in Lant Street, Mr Eric Newell. Mr Newell, who has been Head for 15 years, spoke to us about the history of the School, about the changeover from ILEA to Southwark Council, and about the education of our children in the 1990's.



Charles Dickens School was built in 1877, and at the time was known as Lant Street School. Lant Street had a connection with Charles Dickens because it was here that he lodged as a boy, in 1824, when his father was a guest of His Majesty George IV at Marshalsea Debtors Prison.

At the end of the last century, schools were all-age schools with a 'manager' (today's Headteacher) in charge of each of three separate departments, namely infants, girls and boys. Managers' reports of the time show that in the 1890's there were 1,000 pupils at Lant Street School. As the school was considered a poor school in a poor area, it was renamed Charles Dickens School in 1913 to give it a change of image. Even today, Mr Newell says that letters arrive simply addressed to 'Charles Dickens School, Lant Street'. It is the only Charles Dickens School in London, though it shares the name with another school in Broadstairs in Kent, birthplace of the novelist.

Up until the 1920's, the school used to lay a wreath each year on the grave of Charles Dickens at Westminster Abbey. In the 1930's, schools ceased to be all-age schools and Charles Dickens became an infants and juniors school. The seniors went to a school called Orange Street (up until World War II, schools were named after the street in which they were sited), which is now Copperfield Street.

At the outbreak of the War, the school was closed when many of the local children were evacuated to the countryside. It became an emergency fire station and rest centre for families who were bombed out. Modern

education began with the 1944 Education Act, with the definite separation of schools into primary and secondary, and after the war, Charles Dickens school re-opened as a primary school for infants and juniors. Later, a nursery was opened. Now, the school takes children from the ages 3-11.

When Mr Newell became Headteacher in 1975, the school roll was 240, with a small part-time nursery. In 1977, Mr Newell started a full time nursery which today has 25 places with a long waiting list. After 1977, the school roll started to decline as families shifted out of the area looking for work and better housing outside of London.

In the past 5 years, however, school numbers have picked up and the roll is rising by about 25 children a year. Not only is the nursery full, but the schools is also full in certain age groups. Mr Newell says this is also the case at neighbouring Cathedral and St Joseph Schools. Presently, the school has 191 pupils, of

whom around 20% are from ethnic communities, mainly Asian. At Easter, with a new intake, Mr Newell expects numbers to rise to 200.

When the Inner London Education Authority took over the running of education in 1965, it inherited a tradition of running a London-wide service. Mr Newell has found this aspect of ILEA's work very valuable. "We have found, as educationists, that we have had a lot of support from ILEA. With its resources it has been able to mount London-wide initiatives, such as multi-purpose teachers' centres, such as an English Centre, a very good Music Centre and a Computer Centre. Over the past 6 years or so nearly every school in the ILEA area has been equipped with computers to keep up with the modern age. The other big initiative was in music where they have run summer schools and have set up a very fine London Schools Symphony Orchestra, which gives very good training to the children who play in ILEA orchestras."

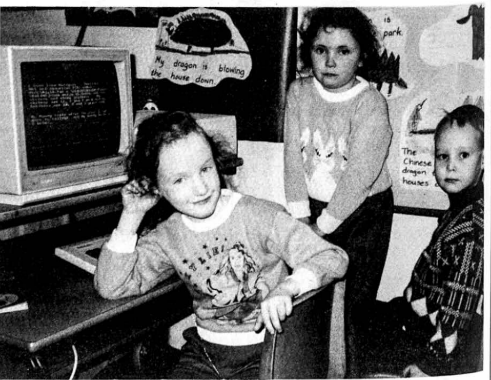
Mr Newell says that there is some concern that in going over to the Boroughs these initiatives will be split up. Westminster is taking over the running of a London-wide music service but Mr Newell fears that unless other boroughs contribute to the costs of running these services, they might disappear after a short time. Mr Newell said that ILEA produced excellent 'curriculum guidelines' for schools in all subjects and had specialist Schools Inspectors in every subject. They also contributed a great deal to the in-service training of teachers.

Mr Newell says that there is some concern that in going over to the Boroughs these initiatives will be split up. Westminster is taking over the running of a London-wide music service but Mr Newell fears that unless other boroughs contribute to the costs of running these services, they might disappear after a short time. Mr Newell said that ILEA produced excellent 'curriculum guidelines' for schools in all subjects and had specialist Schools Inspectors in every subject. They also contributed a great deal to the in-service training of teachers.

Preparations for the handover to Southwark Council have gone quite smoothly, according to Mr Newell. "What most people will be concerned about is what funding and resources will be like in the future", says Mr Newell. One of the advantages of being under Southwark is that "schools will be dealing with one education authority which knows the problems of Southwark, which could be more in tune with the needs of the area and local people."

Under ILEA, schools had a lot of freedom in establishing their own curriculum and methods of teaching. Now, with the introduction of the National Curriculum in September 1989, curriculum guidelines are now set down nationally. Mr Newell, however, says that the changes won't be great since Charles Dickens School has always provided a balanced education with emphasis on literacy and numeracy.

These day, parents are encouraged to play a greater role in the education of their children. "With reading we have a home reading scheme where the parents share the responsibility with the teachers. The children read it with their parents, the parents make comments in the notebook which they send back to school. This is known as PACT, Parents, and Children and Teachers." Mr Newell says that at Charles Dickens there is very good co-operation from the parents and there is always open house for parents to come in and discuss the progress of their children. "Our parents are interested in the progress of the children, particularly in language", says Mr Newell.



New South Bank park proposed

The Queen's Walk Park Society has launched radical proposals for a new London park and civic space on the South Bank which would place the capital alongside other major European cities.

The proposal is for a large park and public space by the river, on the land lying between County Hall and Hungerford Bridge. It would incorporate the existing Jubilee Gardens and the two adjacent car parks. The new plans link the existing riverwalk to the new park. Integral to the proposal is that the river foreshore, the riverbank and the new park would be dedicated to the public in perpetuity.

The new architect-designed park would include many innovative features. It has a gentle gradient sloping down to the river with views across the Thames. The park also forms a superb natural auditorium with the North Bank and Big Ben as the backdrop and with County Hall and Festival Hall on either side. Belvedere Road will be obscured by a grassy, treed bank. All the existing memorials would be retained.

The proposal comes at a time when the future public use of Jubilee Gardens is under threat from the redevelopment of County Hall and the extension of the Jubilee Line. The County Hall Development Group propose to redevelop London's former Town Hall. Under their proposals, Jubilee Gardens

would become a private terrace with public right of access restricted. The South Bank Board want to redevelop the car parks as an office block.

In the meantime, London Regional Transport, whose extension to the Jubilee Line will cross the river at this point, want to use Jubilee Gardens as a work site for up to 7 years during the construction of the line, closing the park and riverwalk to the public.

The Queen's Park Walk Society want to save these spaces for the public. Presently, Jubilee Gardens is owned on behalf of the public by the London Residuary Body, successor body to the GLC, which intends to sell the Gardens to the County Hall Development Group.

John Hearn, Chair of the Society, said that "London is almost unique in that it has no civic square, no focal point for events and for gatherings of a London-wide or even nationwide nature. Most cities have a town square, a civic space for public events, performances of art, public recreation and public meetings. Trafalgar Square and Parliament Square are unsuitable for many events and Hyde Park is not central enough."

For further information about the Queen's Walk Park Society's proposals for the new riverside park, contact David Jackson on 620 1608.

Business as usual at BCC

The Borough Community Centre is presently undergoing major improvement works. The inside has been redecorated and the exterior brickwork is being cleaned and restored.

The scaffolding, water and machinery are causing a few problems for pedestrians and we apologise for this. Unfortunately, this is unavoidable with the scale of work that's being done. This should be completed in a couple of months and the building restored to its former glory.

Despite the works, the Centre is open for business. In particular the Youth Club is open again after a long closure. We have two new Youth Workers, Stephanie and Alex and we will be very pleased to see old and new members at the club.

Youth Club times are Juniors (6-12 years) on Tuesdays

6.30-8.30pm and Seniors (13-18 years) on Thursdays 7.00-9.30pm.

From Monday 23rd April we will be offering more advice sessions. This is in response to a growing need. The times are Mondays 2.00-4.00pm and Fridays 6.15-8.15pm. The evening session is aimed particularly at people who work and are unable to get to daytime advice agencies.

The sessions are being run by the Centre Worker and three volunteer workers. We can assure complete confidentiality to those seeking advice, so if we can be of help, you know where we are.

For any further help or enquiries please ring Janette or Ruth on 928 6476 or pop into the Centre. We look forward to seeing you.

Ruth Ford
Centre Worker

Elephant & Castle Re-launch Day

The Elephant & Castle was opened in 1964 as one of the first covered shopping centres in Great Britain. It got off to a bad start having been designed to fit in with major road works rather than as a response to any local need or retail demand.

The Shopping Centre has been purchased by new owners, UK Land Limited. They are seeking partners to redevelop and upgrade the shopping centre. In the meantime, they are making some immediate improvements. Readers will have noticed that the shopping centre has been painted pink (it's not the undercoat). Other works include the installation of fabric awnings over the

entrances, cleaner, more protected walkways, new signs and a "street" of small shops and workshops in the upper malls. All of these works coincide with the opening of the subways refurbished by Southwark Council.

Wednesday 11th April is Elephant & Castle Re-launch Day, with a series of events: 1-2pm Trumpet Fanfare, followed by the Royal Thames Brass Ensemble; 1-7 Face Painting (indoors, first floor); 2-4 The Flying Chestyoffs (clowns, indoors, ground floor); 4pm Official Opening of the subways by the Mayor of Southwark; 4-7 Capital Radio Roadshow (outdoors); 7.15 Fireworks Display.

St. John Ambulance Brigade

Dear SE1

We are a Southwark Division of the St John Ambulance Brigade. We need more members to join, to help keep going with the work we do.

Our members meet every Wednesday at the Normandy College, adjacent to Kings College Hospital, at 7.30pm. We are an open division, that is to say, men and women are welcome to join us. If anyone is interested in coming along to see what we do, they will be most welcome.

In June we will be running an adult first aid course for the public.

Our division originates from the old Doulton Pottery firm and has been going for more than 90 years. I myself have been a member for 36 years.

If anyone would like to know more about St John Ambulance Brigade, they can contact me on 928 8431 or our Superintendent on 698 7495.

John Donegan
Windmill Walk, SE1



GARDENING WITH JACKIE POWER



The mild winter has encouraged many plants to bloom early. Greenfly and Blackfly have survived and will cause a problem much earlier than usual. There are some pesticides available that are 'ecologically sound' and it is essential to start spraying plants that are infested before the weather warms up.

This is the month when the Japanese cherries begin to excel - they line many streets in the SE1 area and are a welcome sight with their abundant displays. Magnolias are also in bloom at this time with dramatic and beautiful flowers. As the month progresses many varieties of ornamental crab apples (Malus) some with red or crimson flowers or the usual white or pale pink come into bloom. Daffodils which made an appearance in February will now be past their peak along with the crocuses, the tulips will begin to take their place.

Generally, April is a busy month for the gardener, if any jobs were delayed by bad weather in March they can still be carried out now.

Evergreen shrubs can be planted now and the flowering shrubs such as hardy Fuchsias, Buddleia all varieties of Cornus (dogwood) and Salix (willow) can be pruned back hard so that last year's growth is cut back, close to the older wood.

Lawns will require weeding and feeding (towards the end of the month) and will gradually need more frequent mowing.

It is also time to start feeding roses with a good proprietary rose fertiliser.

Houseplants may need tidying up and will benefit from a slight increase in watering. Also start feeding with a good brand of plant food, following the directions carefully.

DOCKLANDS COMMUNITY POSTERS is changing.....

DESIGN

Leaflets, posters, exhibitions, small publications etc. Desktop publishing (Apple Mac) and photographic skills desirable.

4 days per week

PROJECT MARKETING

Development of new and existing projects including associated fundraising and publicity.

3 days per week

TECHNICAL SUPPORT

Maintenance of hoarding structures, paste-up of large images, transportation and setting up of exhibitions and general running of workshop. Driving licence essential.

2 days per week

All salaries pro rata £14,682

Closing date 4th May. Please send S.A.E. for details to:

DOCKLANDS COMMUNITY POSTERS

Unit 167 Cannon Workshops, West India Dock, London E14 9SU
Tel. 01 515 6099.

We are an equal opportunities employer

LEWISHAM AND NORTH SOUTHWARK HEALTH AUTHORITY

COMMUNITY HEALTH SERVICES

Bermondsey Health Centre will shortly be re-opening after major refurbishment. If you would like to work as part of your local Community Health Services, come and join our team.

CARETAKER (REF NO. ADM 374)

£60.74 - £64.61 (4pm - 8pm - 20 hours pw)

You will be responsible for the overall security, maintenance and cleanliness of the Centre, which will include carrying out minor repairs, routine checks of the premises and ensuring the clearance of refuse and other waste.

Working under minimum supervision you may have experience of security and repair work and perhaps demonstrate an interest in DIY.

2 RECEPTIONIST/CLERICAL OFFICERS (REF NO. ADM 375)

£4158 - £4715 (9am - 1pm and 1pm - 5pm)

You will receive patients and other visitors to the Centre, operate the switchboard, be responsible for the selling of Welfare foods and carry out a variety of other clerical duties. You will have experience of communicating with the public, perhaps within a reception or office environment.

For any of these posts you will have the ability to communicate with people at all levels, a flexible and adaptable approach, and enjoy working on your own initiative.

For an informal discussion regarding these posts, please contact Louise Nicholas on 928 2626. Application papers for the above posts are available from: Personnel Department, Priority Care Unit, Elizabeth Blackwell House, Wardalls Grove, SE14 5ER.
Tel: 639 2050 ext 323, 635 9836 (24 hours)

Closing date: Monday 23rd April 1990

COMMUNITY VOLUNTEERS NEEDED

Looking for experience in a caring setting? Perhaps you would be interested in helping in our pensioners or young peoples clubs. We are looking for friendly people to help in these two areas:

to help at our Pensioners Pop-in, a thriving lunch club run by fitter members. The club meets on Tuesdays and Fridays 10.00am-2.00pm;

to help run our Youth Club 'canteen' either on Tuesdays 6.30-8.30pm or Thursdays 7.00-9.30pm.

Both jobs involve a great deal of contact with people. Expenses will be paid. If you are interested and want to know more, please pop in and have a chat with Ruth at the Borough Community Centre, 56 Southwark Bridge Road, SE1, or ring 928 6476.

THE CHURCH OF ENGLAND PARISH OF WATERLOO



Come and worship

Sundays

10.30am Parish Communion
St John's, Waterloo Road

6.30pm Evening Worship
St Andrew's, Short Street

During the week

12.30pm Holy Communion
St John's, Waterloo Road

Vicar

The Revd. Rob Yeomans
633 9819 or 928 4470

STEEL & SHAMASH SOLICITORS

Come for advice to a local firm of Waterloo Solicitors

We specialise in Legal Aid work in the following areas

Matrimonial
Domestic Violence
Crime
Personal Injury
Immigration
General Civil Litigation

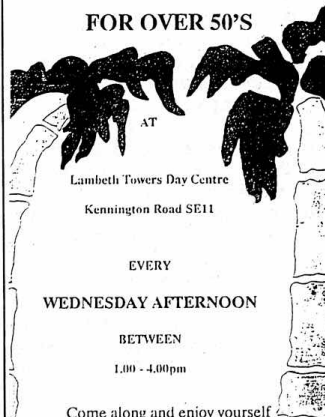
We also have a Conveyancing Department specialising in Right to Buys

If you need help please call in or telephone: 633 0333

8 Baylis Road, Waterloo
London SE1 7AA
Telephone (01) 633 0333

AFRO-CARIBBEAN GROUP

FOR OVER 50'S



AT
Lambeth Towers Day Centre
Kennington Road SE11

EVERY

WEDNESDAY AFTERNOON

BETWEEN

1.00 - 4.00pm

Come along and enjoy yourself

Transport available

If needed ring Lambeth Towers on 735 - 0039

SE1

SE1 newspaper is produced for residents of Waterloo and North Southwark by people living and working locally. We welcome your letters, news, photos or other contributions. SE1 particularly welcomes contributions from the area's ethnic communities.

NEXT COPY DATE

Copy date for the May 1990 issue of SE1 is Wed 25th April. Publication date is Wednesday 2nd May. All contributions and correspondence of any kind concerning the paper should be sent to 56 Southwark Bridge Road, SE1 OAS.

SE1 AVAILABLE AT

If you want to receive your copy of SE1 regularly, it is available from the Waterloo Action Centre, 14 Baylis Rd, from the Borough Community Centre at 56 Southwark Bridge Road, Charterhouse-in-Southwark at 40 Tabard Street, John Harvard Library, Borough Road Library, Morley College, and Blackfriars Settlement at 44 Nelson Square.

ADVERTISING IN SE1

SE1 newspaper is run on a tight budget. We are largely financed by advertisements. If you would like to advertise your activities, events, organisation, jumble sales, products, services or whatever, you will find our rates very reasonable. To find out more about advertising in SE1 telephone Gerry Vignola on 928 0711.

FINANCIAL HELP

SE1 acknowledges the financial help of North Southwark Community Development Group, Coin Street Community Builders and the Association of Waterloo Groups. Any financial contributions will be gratefully received.

SUBSCRIPTIONS

Subscriber rates to SE1 newspaper are £5 a year for individuals and £12 for institutions. Cheques should be made payable to 'SE1 newspaper' and sent to 56 Southwark Bridge Road, SE1 OAS. We publish ten times a year with double issues during the Summer and at Christmas.

EDITORIAL GROUP

Mary Dimond, Gerry Vignola